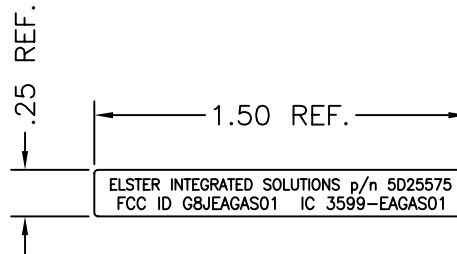



REVISIONS		
REV	COMMENTS	DATE
0	RELEASE FOR PRODUCTION ECN 1185	12-05-07



NOTE:

USE PERMANENT BLACK INK AS RECOMMENDED BY THE LABEL STOCK VENDOR.

OLD DWG # N.A.	INTERPRET PER ANSI Y14.5 & STD PE-1000		ELSTER INTEGRATED SOLUTIONS <small>208 SOUTH ROGERS LANE RALEIGH, NC 27610 TEL: 919 250-5700 FAX: 919 250-5439</small>	
TOLERANCES—UNLESS OTHERWISE SPECIFIED			TITLE: LABEL, PCBA FCC ID	
INCHES .X± .XX± .02" .XXX± .005"	ANGLES± 1°	MILLIMETERS X.± X.X± X.XX±	PROJECT: EA GAS	
SURFACES ✓ min		SURFACES ✓ min		DRFT: ST 11-29-07
THIS DOCUMENT IS THE PROPERTY OF ELSTER INTEGRATED SOLUTIONS, AND ITS SUBSTANCE IS CONFIDENTIAL AND PROPRIETARY. THE CONTENTS HEREOF SHALL NOT BE PUBLISHED OR DISCLOSED TO OUTSIDE PARTIES OR USED FOR THEIR BENEFIT WITHOUT THE WRITTEN AUTHORIZATION OF ELSTER INTEGRATED SOLUTIONS		DRAWING NUMBER 7S1050 H001		ENGR: SB 12-05-07
				CHKR: