

- A - USE PERMANENT BLACK INK AS RECOMMENDED BY THE LABEL STOCK VENDOR. CENTER THE 23-CHARACTER CODE 128 BARCODE. LENGTH OF BARCODE SHOULD BE APPROXIMATELY 1.40" LONG WITH SHARP BLACK LINES AND CLEAN WHITE SPACES. USE A MINIMUM HEIGHT OF .140". THE BARCODE SHALL BE THE PRODUCT 10-CHARACTER STYLE NUMBER WITH ITS 2-DIGIT REVISION FOLLOWED BY THE 1-DIGIT REPAIR NUMBER, FOLLOWED BY THE 10-CHARACTER SERIAL NUMBER. CENTER THE EQUIVALENT ALPHA NUMERIC CHARACTERS WITH A MINIMUM HEIGHT OF .080" BELOW THE BARCODE. ADD A SPACE FOLLOWING THE 2-DIGIT REVISION AND ANOTHER SPACE FOLLOWING THE 1-DIGIT REPAIR NUMBER.
- B - ONCE A SERIAL NUMBER IS PRINTED ONTO A LABEL IT SHALL NOT BE DUPLICATED. LABELS THAT ARE DAMAGED DURING PLACEMENT SHALL BE REPLACED USING A NEW LABEL WITH A NEW SERIAL NUMBER.
- C - FOR EACH PRODUCT FAMILY, AT THE BEGINNING OF A NEW MANUFACTURING WEEK, THE SERIALIZED PORTION OF THE SERIAL NUMBER SHALL START AT 20000 AND SHALL BE LIMITED TO THE RANGE 20000 TO 39999.
- D - MANUFACTURING WEEK 01 STARTS ON THE FIRST SUNDAY OF A NEW YEAR. THE START OF THE NEW MANUFACTURING YEAR ALSO STARTS ON THE FIRST SUNDAY OF THE NEW YEAR.
- E - THIS SERIAL NUMBER ASSIGNMENT SCHEME ALLOWS 19,999 SERIAL NUMBERS FOR EACH PRODUCT FAMILY IN A SINGLE MANUFACTURING WEEK. IF MORE THAN 19,999 SERIAL NUMBERS ARE NEEDED FOR A PRODUCT FAMILY WITHIN A SINGLE MANUFACTURING WEEK, CONSULT PURCHASING FOR INSTRUCTIONS.
- F - REPAIR DIGIT DESCRIPTION:
 NEW PRODUCTION = 0
 FOR FIRST REPAIR, DUPLICATE THE LABEL EXCEPT CHANGE REPAIR DIGIT TO 1.
 FOR SECOND REPAIR, DUPLICATE THE LABEL EXCEPT CHANGE REPAIR DIGIT TO 2.
 FOR THIRD REPAIR, DUPLICATE THE LABEL EXCEPT CHANGE THE REPAIR DIGIT TO 3.

SYM.	PT.	PART-DESCRIPTION-MATERIAL	FINISH NO. ELSTER REF.	MATERIAL NO. ELSTER REF.
ABCDEFG	1	LABEL	SEE NOTE 1	SEE NOTE 1

G - SERIAL NUMBER DESCRIPTION:

MYWWXXXX

M = PRODUCT FAMILY (SEE PRODUCT FAMILY DESCRIPTION).

YY = PRODUCTION YEAR

WW = PRODUCTION WEEK

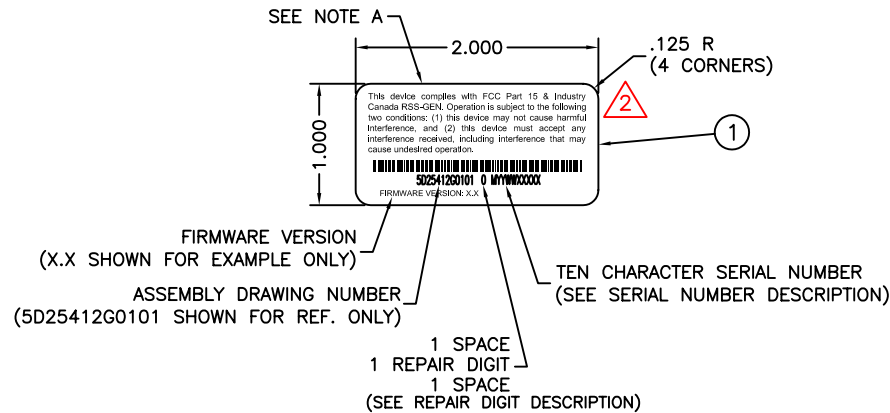
XXXX = WEEKLY, NUMERIC (0-9), SERIAL NUMBER FOR PRODUCT FAMILY.

PRODUCT FAMILY DESCRIPTION

- △ 2 M = 7 (EA WATER MODULE)
- M = 8 (EA GAS MODULE)

MATERIAL:

- 1. WHITE POLYESTER THERMAL TRANSFER LABEL STOCK (ROLL FORM).



△ SUPPLIER CERTIFICATION REQUIRED

⬡ KEY INCOMING INSPECTION DIMENSIONAL CHECKS

THE FOLLOWING ARE CRITICAL/FUNCTIONAL DIMENSIONS USED BY ELSTER ELECTRICITY, LLC FOR SPC, INSPECTION AND OTHER PURPOSES.

FIRST MADE FOR ASSY. DWG.

CAD DWG NO. 1B12182	REFERENCE DWG.	DRAFTSMAN RSB	DATE 10/31/05	DATE 10/31/05	02
		APPROVED A. BORLESKE			
		ECN 1185			
		ADD EA GAS FAMILY PRODUCT CODE. ADD INDUSTRY CANADA			
		SJT	12/05/07		
		SB	12/05/07		

THIS DOCUMENT IS THE PROPERTY OF ELSTER INTEGRATED SOLUTIONS, AND ITS SUBSTANCE IS CONFIDENTIAL AND PROPRIETARY. THE CONTENTS HEREOF SHALL NOT BE PUBLISHED OR DISCLOSED TO OUTSIDE PARTIES OR USED FOR THEIR BENEFIT WITHOUT THE WRITTEN AUTHORIZATION OF ELSTER INTEGRATED SOLUTIONS.

Elster Integrated Solutions, LLC
Raleigh, N.C.

TITLE
SERIAL NUMBER MARKING LABEL
EnergyAxis MODULES

SIZE B	UNSPEC'D TOL. X.XX±.010 X.XXX±.005 ANGLES ±1°	DWG NO. 1B12182	REV 02
SCALE 1:1	NOTE: DRAWING DIMENSIONED IN INCHES	SHEET 1 OF 1	

