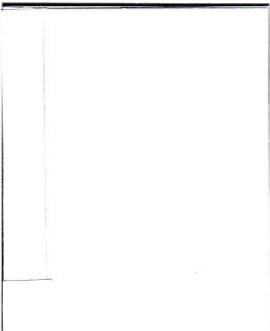
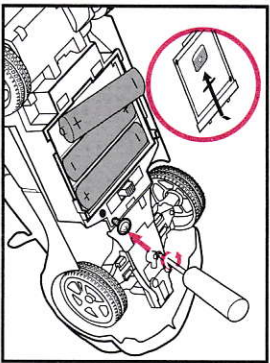
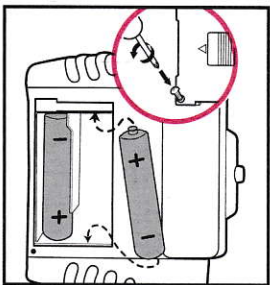


BATTERY INSTALLATIONS AND OPERATING INSTRUCTIONS



Battery Installation:

1. Remove battery compartment covers on vehicle and transmitter by removing screw and pulling in the direction shown by the arrow.
2. Install "AA" batteries in the battery compartments with positive (+) and negative (-) ends matching the compartment markings.
3. Replace the battery covers. Secure with screw.
4. When vehicle is turned on, the transmitter will automatically sync with the vehicle.
5. The vehicle is equipped with 2.4GHz technology which allows up to 6 vehicles to be raced at the same time.

Operation:

1. **START:** Move switch on bottom of vehicle to the "ON" position.
2. **FORWARD/REVERSE:** Push forward/reverse joystick up to move vehicle forward and down for reverse.
3. **LEFT/RIGHT STEERING:** Push left/right joystick left to turn vehicle left or right to turn right.

Steering Trim:

If the vehicle veers to the left or right, adjust steering trim on underside of vehicle until the desired alignment is reached.

Battery Requirements:

Vehicle: 3 "AA" Batteries
Transmitter: 2 "AA" Batteries

For Best Results:

1. Do not mix old and new batteries.
2. Do not mix alkaline, standard or rechargeable batteries.
3. Use alkaline batteries only.

F.C.C. CAUTION:

Changes or modifications not expressly approved by the party responsible for compliance could void the user's authority to operate the equipment.

This device complies with Part 15 of the FCC Rules. Operation is subject to the following two conditions:

- (1) this device may not cause harmful interference, and (2) this device must accept any interference received, including interference that may cause undesired operation.

NOTE:

This equipment has been tested and found to comply with the limits for a Class B digital device, pursuant to Part 15 of the FCC Rules. These limits are designed to provide reasonable protection against harmful interference in a residential installation. This equipment generates, uses and can radiate radio frequency energy and, if not installed and used in accordance with the instructions, may cause harmful interference to radio communications. However, there is no guarantee that interference will not occur in a particular installation. If this equipment does cause harmful interference to radio or television reception, which can be determined by turning the equipment off and on, the user is encouraged to try to correct the interference by one or more of the following measures:

- Reorient or relocate the receiving antenna.
- Increase the separation between the equipment and receiver.
- Connect the equipment into an outlet on a circuit different from that to which the receiver is connected.
- Consult the dealer or an experienced radio/TV technician for help.

Contact New Bright Industries Customer Service Toll Free at:
1-877-NBI-TOYS

(1-877-624-8697)

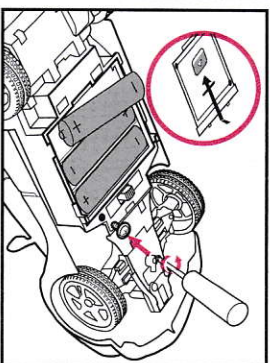
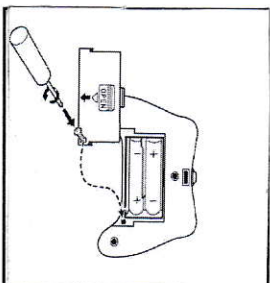
Monday through Friday, 8:00 AM to 5:00 PM Eastern Time
U.S. Toy Sales and Marketing Co. Inc.

30260 Oak Creek Drive – 2nd Floor Wixom MI 48393

1-877-624-8697

<http://www.newbright.com/>

BATTERY INSTALLATIONS AND OPERATING INSTRUCTIONS



Battery Installation:

1. Remove battery compartment covers on vehicle and transmitter by removing screw and pulling in the direction shown by the arrow.
2. Install "AA" batteries in the battery compartments with positive (+) and negative (-) ends matching the compartment markings.
3. Replace the battery covers. Secure with screw.
4. When vehicle is turned on, the transmitter will automatically sync with the vehicle.
5. The vehicle is equipped with 2.4GHz technology which allows up to 6 vehicles to be raced at the same time.

Operation:

1. **START:** Move switch on bottom of vehicle to the "ON" position.
2. **FORWARD/REVERSE:** Push forward/reverse joystick up to move vehicle forward and down for reverse.
3. **LEFT/RIGHT STEERING:** Push left/right joystick left to turn vehicle left or right to turn right.

Steering Trim:

If the vehicle veers to the left or right, adjust steering trim on underside of vehicle until the desired alignment is reached.

Battery Requirements:

Vehicle: 3 "AA" Batteries
Transmitter: 2 "AA" Batteries

For Best Results:

1. Do not mix old and new batteries.
2. Do not mix alkaline, standard or rechargeable batteries.
3. Use alkaline batteries only.

F.C.C. CAUTION:

Changes or modifications not expressly approved by the party responsible for compliance could void the user's authority to operate the equipment.

This device complies with Part 15 of the FCC Rules. Operation is subject to the following two conditions:

- (1) this device may not cause harmful interference, and (2) this device must accept any interference received, including interference that may cause undesired operation.

NOTE:

This equipment has been tested and found to comply with the limits for a Class B digital device, pursuant to Part 15 of the FCC Rules. These limits are designed to provide reasonable protection against harmful interference in a residential installation. This equipment generates, uses and can radiate radio frequency energy and, if not installed and used in accordance with the instructions, may cause harmful interference to radio communications. However, there is no guarantee that interference will not occur in a particular installation. If this equipment does cause harmful interference to radio or television reception, which can be determined by turning the equipment off and on, the user is encouraged to try to correct the interference by one or more of the following measures:

- Reorient or relocate the receiving antenna.
- Increase the separation between the equipment and receiver.
- Connect the equipment into an outlet on a circuit different from that to which the receiver is connected.
- Consult the dealer or an experienced radio/TV technician for help.

Contact New Bright Industries Customer Service Toll Free at:
1-877-NBI-TOYS

(1-877-624-8697)

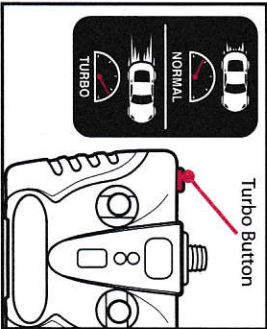
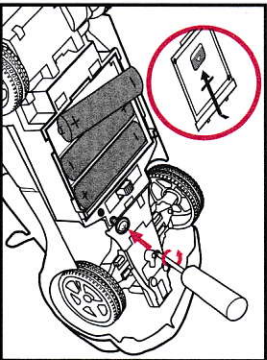
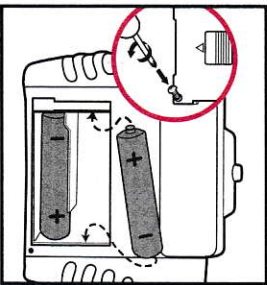
Monday through Friday, 8:00 AM to 5:00 PM Eastern Time
U.S. Toy Sales and Marketing Co. Inc.

30260 Oak Creek Drive – 2nd Floor Wixom MI 48393

1-877-624-8697

<http://www.newbright.com/>

BATTERY INSTALLATIONS AND OPERATING INSTRUCTIONS



Battery Installation:

1. Remove battery compartment covers on vehicle and transmitter by removing screw and pulling in the direction shown by the arrow.
2. Install "AA" batteries in the battery compartments with positive (+) and negative (-) ends matching the compartment markings.
3. Replace the battery covers. Secure with screw.
4. When vehicle is turned on, the transmitter will automatically sync with the vehicle.
5. The vehicle is equipped with 2.4GHz technology which allows up to 6 vehicles to be raced at the same time.

Operation:

1. **START:** Move switch on bottom of vehicle to the "ON" position.
2. **FORWARD/REVERSE:** Push forward/reverse joystick up to move vehicle forward and down for reverse.
3. **TURBO DRIVE:** Press and hold Turbo Button for faster speed while driving forward. Release button to return to normal drive speed.
4. **LEFT/RIGHT STEERING:** Push left/right joystick left to turn vehicle left or right to turn right.

Steering Trim:

If the vehicle veers to the left or right, adjust steering trim on underside of vehicle until the desired alignment is reached.

Battery Requirements:

Vehicle: 3 "AA" Batteries
Transmitter: 2 "AA" Batteries

For Best Results:

1. Do not mix old and new batteries.
2. Do not mix alkaline, standard or rechargeable batteries.
3. Use alkaline batteries only.

F.C.C. CAUTION:

Changes or modifications not expressly approved by the party responsible for compliance could void the user's authority to operate the equipment.

This device complies with Part 15 of the FCC Rules.

Operation is subject to the following two conditions:

- (1) this device may not cause harmful interference, and (2) this device must accept any interference received, including interference that may cause undesired operation.

NOTE:

This equipment has been tested and found to comply with the limits for a Class B digital device, pursuant to Part 15 of the FCC Rules. These limits are designed to provide reasonable protection against harmful interference in a residential installation. This equipment generates, uses and can radiate radio frequency energy and, if not installed and used in accordance with the instructions, may cause harmful interference to radio communications. However, there is no guarantee that interference will not occur in a particular installation. If this equipment does cause harmful interference to radio or television reception, which can be determined by turning the equipment off and on, the user is encouraged to try to correct the interference by one or more of the following measures:

- Reorient or relocate the receiving antenna.
- Increase the separation between the equipment and receiver.
- Connect the equipment into an outlet on a circuit different from that to which the receiver is connected.
- Consult the dealer or an experienced radio/TV technician for help.

Contact New Bright Industries Customer Service Toll Free at:

1-877-NBI-TOYS

(1-877-624-8697)

Monday through Friday, 8:00 AM to 5:00 PM Eastern Time
U.S. Toy Sales and Marketing Co. Inc.

30260 Oak Creek Drive - 2nd Floor Wixom MI 48393

1-877-624-8697

<http://www.newbright.com/>