

CAROL

Digital Wireless Receiver

Model No. : DW-25R

Input Voltage : DC 7.5V/1A 7.5W

Power Consumption : 1.5W

Carrier Frequency : 2.403~2.478GHz

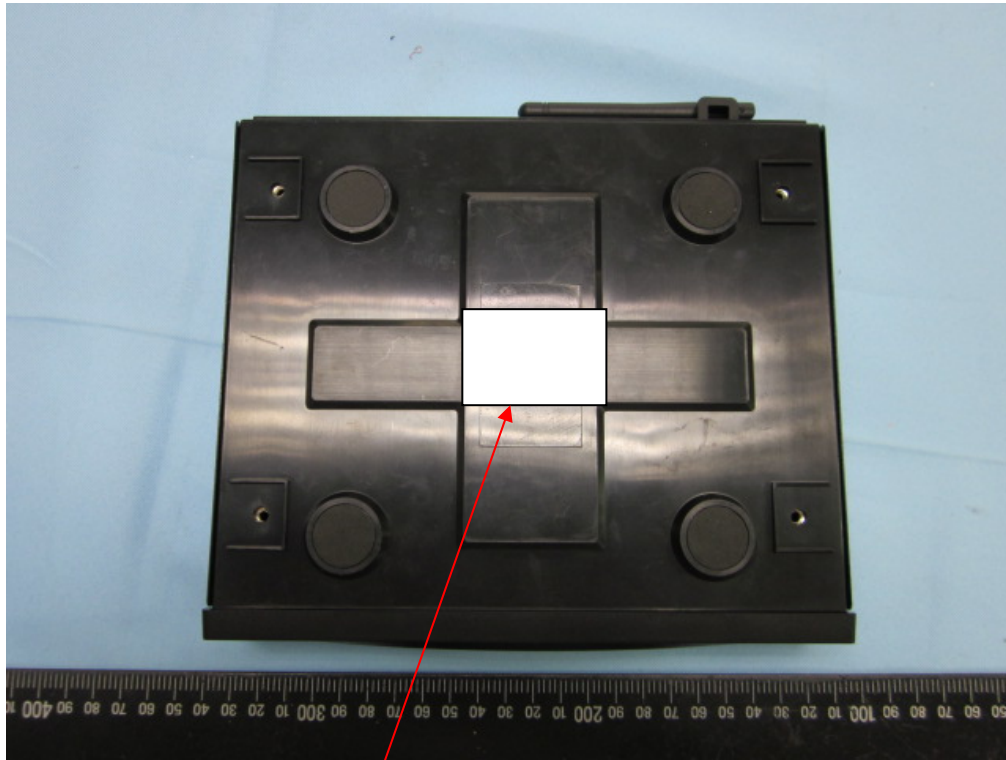
This device complies with Part 15 of the FCC Rules.

Operation is subject to the following two conditions: (1) this device may not cause harmful interference, and (2) this device must accept any interference received, including interference that may cause undesired operation.



 FCC ID: G4RCAROLDW25R  CCAB13LP1240T0

FCC ID label



Label Here