

[VTECH]

[2.4GHz Antenna]

**Model: 5726**

**Antenna description:**

This antenna is optimized and used in the Bluetooth part in the device. This antenna is directly soldered to the RF output in the main PCB.

**Ordering information:**

<b>Model Number</b>	<b>Description</b>
5726	2.4GHz PCB Antenna

**Specification:**

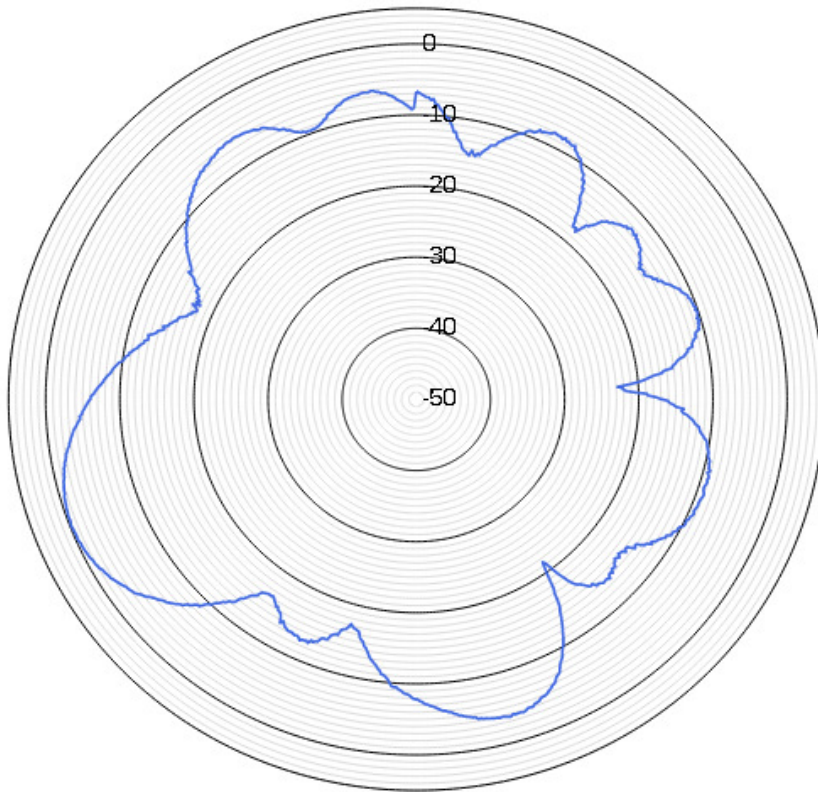
<b>Operation Frequency Range</b>	2402-2480 MHz
<b>Maximum Gain</b>	0 dBi
<b>Type</b>	Monopole
<b>Operation bandwidth</b>	78MHz
<b>Nominal Impedance</b>	~50 ohms
<b>Connectors</b>	-
<b>Dimensions</b>	14.7mm x 5.7mm
<b>Manufacturer</b>	Vtech Electronics Ltd
<b>Manufacturer address</b>	23/F, Tai Ping Industrial Centre, Blk1, 57 Ting Kok Road, Tai Po, Hong Kong
<b>Model number</b>	ANT-5726-F-BT-1

[VTECH]

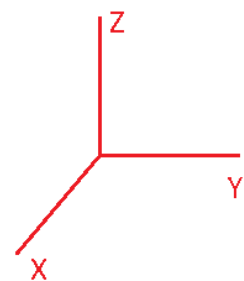
[2.4GHz Antenna]

Antenna pattern (2441MHz) (the frequency with maximum gain)

XY plane (gain theta)



Coordination:



[VTECH]

[2.4GHz Antenna]

Physical Dimension:

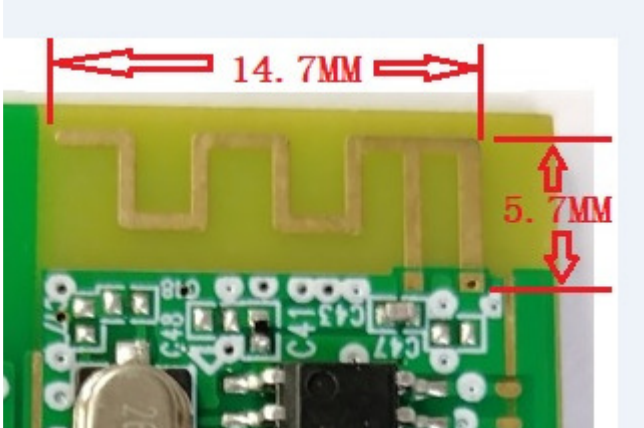


Figure 1 Physical dimension (mm)