



InnoTAB[®] MAX

Product Information Guide

**Read this important Product Information Guide
before using your InnoTab[®] MAX.**

The full InnoTab[®] MAX User's Manual can be found online at
<http://www.vtechkids.com/innotabmax/manual>

Included in This Package

InnoTab® MAX Stylus



USB Cable and Power Adapter



Stylus String



InnoTab® MAX Software Preview Cartridge



InnoTab® MAX



Quick Start Guide



Product Information Guide

Specification of Power Adapter:

Input: 120V 60Hz 300mA AC

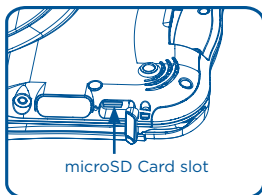
Output: 5V 2A DC

Warning: All packing materials, such as tape, plastic sheets, packaging locks, wire ties, and tags are not part of this toy, and should be discarded for your child's safety.

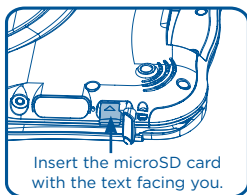
Note: Please keep the Quick Start Guide and Product Information Guide as they contain important information.

Inserting a microSD Card

You can insert a microSD memory card (not included) into your **InnoTab® MAX** to expand available memory for downloaded content, photos, videos or music. **The InnoTab® MAX** is compatible with microSD memory cards up to 32GB.



microSD Card slot



Insert the microSD card with the text facing you.

- Make sure the tablet is turned off.
- Turn the **InnoTab® MAX** over, and locate the microSD card slot on the back. Insert the microSD card as shown above.

Using the Detachable Cover and Stand

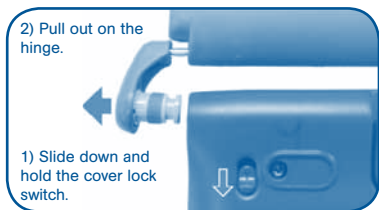
Using the Stand

The cover can protect the screen of your **InnoTab® MAX** when flipped to the front. Flipping the cover to the back makes a stand to provide a better viewing angle for watching videos or a photo slide show.



Detaching the Cover

The cover can be removed to make the **InnoTab® MAX** slimmer and more lightweight.



Repeat the steps on the other side.

Attaching the Cover



1) Pull out on one of the hinges of the cover.

2) Insert the valve into one of the sockets and push in until you hear and feel a "click."

Repeat the steps on the other side.

Care & Maintenance

1. Keep your **InnoTab® MAX** out of direct sunlight and away from direct sources of heat.
2. Turn off your **InnoTab® MAX** when not using it for an extended period of time.
3. Avoid dropping your **InnoTab® MAX** and NEVER try to dismantle it.
4. Always keep your **InnoTab® MAX** away from water.
5. Examine the power adapter periodically for conditions that may result in the risk of fire, electric shock, or injury to persons (such as damage to the output cord, blades, housing, or other parts). In the event of such conditions, the adapter should not be used until properly repaired.

Using the InnoTab® MAX Touch Screen and Stylus:

- Use your finger or the included stylus to operate the tablet. Be careful not to press down too hard, as too much pressure may damage the touch screen.
- Do not use the stylus if it is broken.
- Do not use any other stylus on the touch screen other than the **InnoTab® MAX** stylus.
- Put the stylus back in the stylus holder when not in use.

Cleaning the InnoTab® MAX Touch Screen

- Slightly dampen a soft, lint-free cloth with a little water and wipe the screen to loosen dirt.
- Use a clean and dry cloth to wipe the screen dry. Repeat these two steps as needed.

Cleaning the InnoTab® MAX Cabinet

- Keep your **InnoTab® MAX** clean by wiping it with a slightly damp cloth. Never use solvents or abrasives.

WARNING

A very small percentage of the public, due to an existing condition, may experience epileptic seizures or momentary loss of consciousness when viewing certain types of flashing colors or patterns, especially on television. While the **InnoTab® MAX** does not contribute to any additional risks, we do recommend that parents supervise their children while they play video games. If your child experiences dizziness, altered vision, disorientation, or convulsions, discontinue use immediately and consult your physician. Please note that focusing on an LCD screen at close range for a prolonged period of time may cause fatigue or discomfort. We recommend that children take a 15-minute break for every hour of play.

If your **InnoTab® MAX** does not respond to an inserted cartridge, please carefully try the following:

- Turn off the **InnoTab® MAX** and unplug all wiring.
- Use a cotton swab dipped in rubbing alcohol or an alcohol-based window cleaner to gently clean the contact area of the cartridge slot.
- If necessary, dry all the clean contact areas with a soft, lint-free cloth.
- Make sure that all parts are completely dry before restoring electricity.

Static electricity may cause the **InnoTab® MAX** to malfunction. In some cases, the game play score stored in the tablet memory may be lost. In cases where the **InnoTab® MAX** is malfunctioning due to static electricity, reset the tablet by pressing and holding the Power button for 10 seconds until the unit turns off. Then press and hold the Power button for 3 seconds to turn on the unit again. Or, if the static electricity malfunction occurred during the downloading process, disconnect the USB cable, delete the corrupted file, and reset the tablet as described above. Then reconnect the USB cable and restart the download process.

For more information and troubleshooting tips, visit www.vtechkids.com/tutorials/innotabmax

Safety Precautions for Using the Battery and Charger

Important Notes:

- This charger is not a toy. This charger is not intended for use by children.
- The tablet will charge at temperatures between 41°F-95°F(5°C-35°C). If the tablet is not charging properly, please move it to a location with a suitable temperature.
- The battery is not removable.
- Disconnect the tablet from the Power Adapter and turn off the tablet before cleaning.
- Only use the Power Adapter that is included with this package.
- To prevent fire or electric shock, do not expose the unit to rain or moisture.
- To preserve battery life, the **InnoTab® MAX** will go into a sleep mode automatically when there is no input for a few minutes. The Wi-Fi connection will also be disconnected when the battery power is low.

Standard guidelines for adapter toys and electrically operated products

- As with all electrical products, precautions should be used and observed during handling and use to prevent electric shock.
- Do not leave the toy plugged in for extended periods of time.

- The toy shall only be used with a power adapter for toys.
- Never clean a plugged-in toy with liquid.
- Never use more than one adapter.
- The adapter is not a toy.
- Parents should periodically examine the adapter for conditions that may result in the risk of fire, electric shock, or injury to persons. In the event of such conditions, the adapter should not be used until properly repaired.

Caution

When not charging the battery or connected to a computer, close the USB port cover on the **InnoTab® MAX** for safety.

Only use the **InnoTab® MAX** Power Adapter and Micro-USB cable to charge your device.

Using a different charger may damage your **InnoTab® MAX**.

Please note: VTech is the only service provider that is authorized to replace the battery on your **InnoTab® MAX**. Any attempt to remove or replace the battery by a third party or by yourself may damage your **InnoTab® MAX** and will void your warranty. If you feel your battery needs service, please contact VTech's Consumer Services Department.

Technical Support

- If you have a problem that cannot be solved by using this manual, we encourage you to visit us online or contact our Consumer Services Department with any problems and/or suggestions that you might have. A support representative will be happy to assist you. Before requesting support, please be ready to provide or include the information below:
- The name of your product or model number (the model number is located on the back of the display panel).
- The actual problem you are experiencing.
- The actions you took right before the problem started.

Internet : www.vtechkids.com

Phone : 1-800-521-2010 in the U.S. or 1-877-352-8697 in Canada

Copyright Notices

© 2014 VTech®. All Rights Reserved. InnoTab®, Learning Lodge®, VTech® and the VTech® logo are registered trademarks of VTech. All other trademarks are property of their respective owners. The terms HDMI and HDMI High-Definition Multimedia Interface, and the HDMI Logo are trademarks or registered trademarks of HDMI Licensing LLC in the United States and other countries.

IMPORTANT NOTE:

Creating and developing the **InnoTab® MAX** is accompanied by a responsibility that we at **VTech®** take very seriously. We make every effort to ensure the accuracy of the information that forms the value of our products. However, errors sometimes can occur. It is important for you to know that we stand behind our products and encourage you to call our Consumer Services Department at 1-800-521-2010 in the U.S. or 1-877-352-8697 in Canada, with any problems and/or suggestions that you might have. A service representative will be happy to help you. This product is licensed under the AVC patent portfolio license for the personal use of a consumer or other uses in which it does not receive remuneration to

(i) encode video in compliance with the AVC standard (“AVC video”) and/or

(ii) decode AVC video that was encoded by a consumer engaged in a personal activity and/or was obtained from a video provider licensed to provide AVC video.

No license is granted or shall be implied for any other use. Additional information may be obtained from MPEG LA, L.L.C. See

<http://www.mpegla.com>

Disclaimer and Limitation of Liability

VTech® Electronics North America, L.L.C. and its suppliers assume no responsibility for any damage or loss resulting from the use of this handbook. **VTech®** Electronics North America, L.L.C. and its suppliers assume no responsibility for any loss or claims by third parties that may arise through the use of this software. **VTech®** Electronics North America, L.L.C. and its suppliers assume no responsibility for any damage or loss caused by deletion of data as a result of malfunction, dead battery, or repairs. Be sure to make backup copies of important data on other media to protect against data loss insert line break. Company: **VTech®** Electronics North America, L.L.C.

Address: 1156 W. Shure Drive, Suite 200, Arlington Heights, IL 60004 USA
Phone : 1-800-521-2010 in the U.S. or 1-877-352-8697 in Canada

Note: This equipment has been tested and found to comply with the limits for a Class B digital device, pursuant to Part 15 of the FCC Rules.

These limits are designed to provide reasonable protection against harmful interference in a residential installation. This equipment generates, uses and can radiate radio frequency energy and, if not installed and used in accordance with the instructions, may cause harmful interference to radio communications. However, there is no guarantee that interference will not

occur in a particular installation. If this equipment does cause harmful interference to radio or television reception, which can be determined by turning the equipment off and on, the user is encouraged to try to correct the interference by one or more of the following measures:

- Reorient or relocate the receiving antenna.
- Increase the separation between the equipment and receiver.
- Connect the equipment into an outlet on a circuit different from that to which the receiver is connected.
- Consult the dealer or an experienced radio/TV technician for help.

THIS DEVICE COMPLIES WITH PART 15 OF FCC RULES AND INDUSTRY CANADA LICENCE-EXEMPT RSS STANDARD(S). OPERATION IS SUBJECT TO THE FOLLOWING TWO CONDITIONS: (1) THIS DEVICE MAY NOT CAUSE INTERFERENCE, AND (2) THIS DEVICE MUST ACCEPT ANY INTERFERENCE, INCLUDING INTERFERENCE THAT MAY CAUSE UNDESIRE OPERATION OF THE DEVICE.

LE PRÉSENT APPAREIL EST CONFORME AUX CNR D'INDUSTRIE CANADA APPLICABLES AUX APPAREILS RADIO EXEMPTS DE LICENCE. L'EXPLOITATION EST AUTORISÉE AUX DEUX CONDITIONS SUIVANTES: (1) L'APPAREIL NE DOIT PAS PRODUIRE DE BROUILLAGE, ET (2) L'UTILISATEUR DE L'APPAREIL DOIT ACCEPTER TOUT BROUILLAGE RADIOÉLECTRIQUE SUBI, MÊME SI LE BROUILLAGE EST SUSCEPTIBLE D'EN COMPROMETTRE LE FONCTIONNEMENT.

Caution: Changes or modifications not expressly approved by the party responsible for compliance could void the user's authority to operate the equipment.

USB cable with ferrite must be used with this equipment to ensure compliance with the Class B FCC limits.



END USER LICENSE AGREEMENT

THIS IS A LEGAL AGREEMENT BETWEEN YOU AND VTECH INC. ("VTECH"), STATING THE TERMS THAT GOVERN YOUR USE OF SOFTWARE FOR INNOTAB® MAX OR IN CONNECTION WITH THE APPLICATION OF SOFTWARE ("SOFTWARE"). "SOFTWARE" INCLUDES AUDIO FILES FOR THE INNOTAB® MAX SYSTEM.

BY ACTIVATING, USING, DOWNLOADING OR INSTALLING THIS SOFTWARE, YOU ARE AGREEING TO BE BOUND BY THE TERMS OF THIS AGREEMENT. YOUR RIGHT TO USE THE SOFTWARE IS CONDITIONAL UPON YOUR AGREEMENT TO THESE TERMS. IF YOU DETERMINE THAT YOU ARE UNWILLING TO AGREE TO THE TERMS OF THIS LICENSE AGREEMENT, YOU HAVE NO RIGHT TO USE THE SOFTWARE AND YOU SHOULD PROMPTLY RETURN THE SOFTWARE TO VTECH OR DELETE IT.

IF YOU ARE UNDER THE AGE OF 18 OR ARE OTHERWISE CONSIDERED A MINOR IN YOUR JURISDICTION, YOU SHOULD REVIEW THESE TERMS AND CONDITIONS WITH YOUR PARENT OR GUARDIAN (COLLECTIVELY, "PARENT") AND MAKE SURE THAT YOUR PARENT UNDERSTANDS AND AGREES ON YOUR BEHALF TO THESE TERMS AND CONDITIONS.

WHEREVER THIS AGREEMENT REFERS TO "YOU" OR "YOUR," IT IS MEANT TO INCLUDE BOTH PARENT AND CHILDREN USERS, EXCEPT WHERE A CHILD IS NOT OF SUFFICIENT LEGAL AGE TO ENTER INTO A BINDING CONTRACT (SUCH AS AN E-COMMERCE TRANSACTION) OR PROVIDE ANY REQUIRED CONSENTS (SUCH AS CONSENT TO DATA COLLECTION, PROCESSING, OR TRANSFERS), IN WHICH CASE THE PARENT OF SUCH CHILD HEREBY ACKNOWLEDGES AND AGREES HE/SHE IS ACTING ON THE CHILD'S BEHALF TO EFFECTUATE SUCH CONTRACTS OR CONSENTS AND IS FULLY LIABLE FOR THE ACTIONS OR INACTIONS OF SUCH CHILD WITH RESPECT TO THE USE OF THE SOFTWARE AND RELATED SERVICES.

1. **OWNERSHIP.** The Software and Documentation (including all content contained within the Product) are owned by VTECH, or its licensors, and are protected by international copyright and other intellectual property laws. The Software and Documentation shall only be used by you in accordance with this Agreement. The Software and Documentation are licensed, not sold. Except as specifically set forth herein, VTECH and its licensors retain all right, title and interest, including all intellectual property rights, in and to the Software and Documentation.

2. **LICENSE TERMS.** VTECH grants to you, subject to the terms, conditions and limitations further defined in this Agreement, a non-exclusive, non-sublicenseable, non-transferable license for non-commercial use, and to use the Documentation in connection with such use of the Software. Any modifications, upgrades, error corrections, or other updates to the Software provided by VTECH to you shall be deemed part of the Software and use thereof shall be governed by the terms and conditions of this Agreement, unless the parties have entered into a separate, written agreement governing such modifications, upgrades, error corrections, or other updates.

3. **RESTRICTIONS ON REVERSE ENGINEERING AND SECURITY.** Except to the extent otherwise expressly and unambiguously authorized by VTECH or to the extent such restrictions are explicitly prohibited by applicable law, you shall NOT reverse engineer, decompile, disassemble, translate or attempt to learn the source code of the Software (ii) copy, modify, create derivative works of, distribute, sell, assign, pledge, sublicense, lease, loan, rent, timeshare, deliver or otherwise transfer the Software (iii) remove from the Software, or alter or add, any copyright, trademarks, trade names, logos, notices or markings (iv) violate, tamper with or circumvent any security system or measures implemented by VTECH which are designed to prevent unauthorized copying of the

Software. Any such forbidden use shall immediately terminate your license to the Software without any prior notice.

4. LIMITED WARRANTY. VTECH warrants to you – subject to your compliance with the terms herein – that for a period of ninety (90) days from the date you purchase the Product, the Software will substantially conform to VTECH's published specifications for the Software. Your sole and exclusive remedy under the foregoing warranty shall be for VTECH, at its choice, to use commercially reasonable efforts to correct any substantial non-conformity of the Software reported to VTECH in writing within the warranty period and/or provide a replacement copy of the Software. The foregoing warranty shall not apply to any non-conformity that is caused by (i) the use or operation of the Software with an application or in an environment other than that intended or recommended by VTECH, (ii) modifications to the Software not made by VTECH or (iii) third party hardware or software provided by any third party.

VTECH MAKES NO WARRANTIES THAT THE SOFTWARE IS ERROR FREE OR IS SUITABLE FOR YOUR PURPOSES. VTECH MAKES NO WARRANTIES OTHER THAN THOSE SET FORTH ABOVE, AND HEREBY DISCLAIMS ALL OTHER WARRANTIES, WHETHER EXPRESS, IMPLIED OR STATUTORY, WITH RESPECT TO THE SOFTWARE OR DOCUMENTATION, INCLUDING, WITHOUT LIMITATION, ANY IMPLIED WARRANTIES OF MERCHANTABILITY, FITNESS FOR A PARTICULAR PURPOSE, OR NONINFRINGEMENT. NO ORAL OR WRITTEN INFORMATION OR ADVICE GIVEN BY VTECH, ITS RESELLERS, AGENTS OR EMPLOYEES SHALL CREATE A WARRANTY.

5. LIMITATION OF LIABILITY. IN NO EVENT SHALL VTECH BE LIABLE FOR ANY LOSS OF PROFITS, USE OF DATA, COST OF REPLACEMENT GOODS OR HARDWARE, OR OTHER INDIRECT, INCIDENTAL, SPECIAL, OR CONSEQUENTIAL DAMAGES ARISING OUT OF YOUR USE OR INABILITY TO USE THE SOFTWARE DOWNLOAD OR DOCUMENTATION, EVEN IF VTECH HAS BEEN ADVISED OF THE POSSIBILITY OF SUCH DAMAGES, AND NOTWITHSTANDING THE FAILURE OF ESSENTIAL PURPOSE OF ANY REMEDY. YOU AGREE THAT IN NO EVENT WILL VTECH'S AGGREGATE LIABILITY HEREUNDER OR RELATED TO YOUR USE OF THE SOFTWARE OR DOCUMENTATION EXCEED THE AMOUNT PAID FOR THE PRODUCT AND/OR SOFTWARE.

6. TERMINATION. This License Agreement will automatically terminate if you fail to comply with any term thereof. No notice shall be required from VTECH to effect such termination.