

# A Test Lab Techno Corp.

Changan Lab : No. 140 -1, Changan Street, Bade City, Taoyuan County, Taiwan R.O.C.

Tel : 886-3-271-0188 / Fax : 886-3-271-0190

## SAR EVALUATION REPORT



|                   |   |   |
|-------------------|---|---|
| Test Report No.   | : | 1211FS18  |
| Applicant         | : | VTech Electronics Ltd.  |
| Product Type      | : | Learning App Tablet   |
| Trade Name        | : | vtech   |
| Model Number      | : | 1568  |
| Date of Received  | : | Nov. 19, 2012   |
| Test Period       | : | Nov. 19 ~ Nov. 20, 2012   |
| Date of Issued    | : | Nov. 20, 2012   |
| Test Environment  | : | Ambient Temperature : $22 \pm 2^{\circ} \text{C}$<br>Relative Humidity : 40 - 70 %  |
| Standard          | : | ANSI/IEEE C95.1-1999<br>IEEE Std. 1528-2003<br>IEEE Std. 1528a-2005<br>47 CFR Part §2.1093;<br>FCC/OET Bulletin 65 Supplement C [July 2001] |
| Max. SAR          | : | 0.197 W/kg Body SAR   |
| Test Lab Location | : | Chang-an Lab  |



1. The test operations have to be performed with cautious behavior, the test results are as attached.
2. The test results are under chamber environment of A Test Lab Techno Corp. A Test Lab Techno Corp. does not assume responsibility for any conclusions and generalizations drawn from the test results with regard to other specimens or samples.
3. The measurement report has to be written approval of A Test Lab Techno Corp. It may only be reproduced or published in full. This report shall not be reproduced except in full, without the written approval of A Test Lab Techno Corp. The test results in the report only apply to the tested sample.

Approved By : Yung-Tan Tsai Tested By : Bill Hu  
(Yung Tan Tsai) (Bill Hu)



# Contents

|   |    |
|---|----|
| 1. Description of Equipment under Test (EUT) .....  | 3  |
| 2. Introduction.....                                | 4  |
| 2.1 SAR Definition .....                            | 4  |
| 3. SAR Measurement Setup .....                      | 5  |
| 3.1 DASY5 E-Field Probe System.....                 | 6  |
| 3.2 Data Acquisition Electronic (DAE) System.....   | 9  |
| 3.3 Robot.....                                      | 9  |
| 3.4 Measurement Server.....                         | 9  |
| 3.5 Device Holder.....                              | 10 |
| 3.6 Phantom - SAM v4.0 .....                        | 10 |
| 3.7 Oval Flat Phantom - ELI 5.0.....                | 11 |
| 3.8 Data Storage and Evaluation.....                | 11 |
| 4. Tissue Simulating Liquids.....                   | 14 |
| 4.1 Ingredients.....                                | 15 |
| 4.2 Recipes.....                                    | 15 |
| 4.3 Liquid Confirmation .....                       | 16 |
| 5. SAR Testing with RF Transmitters .....           | 17 |
| 5.1 SAR Testing with 802.11 Transmitters.....       | 17 |
| 5.2 Conducted Power.....                            | 18 |
| 6. System Performance Check .....                   | 19 |
| 6.1 Symmetric Dipoles for System Verification ..... | 19 |
| 6.2 Verification.....                               | 20 |
| 7. Test Equipment List.....                         | 21 |
| 8. Measurement Uncertainty .....                    | 22 |
| 9. Measurement Procedure.....                       | 25 |
| 9.1 Spatial Peak SAR Evaluation .....               | 25 |
| 9.2 Area & Zoom Scan Procedures .....               | 25 |
| 9.3 Volume Scan Procedures.....                     | 26 |
| 9.4 SAR Averaged Methods .....                      | 26 |
| 9.5 Power Drift Monitoring.....                     | 26 |
| 10. SAR Test Results Summary .....                  | 27 |
| 10.1 Body SAR.....                                  | 27 |
| 10.2 Std. C95.1-1999 RF Exposure Limit.....         | 28 |
| 11. Conclusion.....                                 | 29 |
| 12. References .....                                | 29 |
| Appendix A - System Performance Check.....          | 30 |
| Appendix B - SAR Measurement Data.....              | 31 |
| Appendix C - Calibration.....                       | 37 |



**1. Description of Equipment under Test (EUT)**

|                              |  |                         |
|------------------------------|--|-------------------------|
| Applicant                    | VTech Electronics Ltd.   |                         |
| Applicant Address            | 23/F., Tai Ping Industrial Centre, Block 1, 57 Ting Kok Road, Tai Po,<br>N. T., Hong Kong. |                         |
| Manufacture                  | VTech Electronics Ltd.   |                         |
| Manufacture Address          | 23/F., Tai Ping Industrial Centre, Block 1, 57 Ting Kok Road, Tai Po,<br>N. T., Hong Kong. |                         |
| Product Type                 | Learning App Tablet  |                         |
| Trade Name                   | vtech  |                         |
| Model Number                 | 1568   |                         |
| FCC ID                       | G2R-1568   |                         |
| IC                           | 1135D-1568   |                         |
| RF Function                  | IEEE 802.11b / IEEE 802.11g  |                         |
| Tx Frequency                 | Band   | Operate Frequency (MHz) |
|                              | IEEE 802.11b / IEEE 802.11g  | 2412 - 2462             |
| RF Conducted Power<br>(Avg.) | Band   | Power (W / dBm)         |
|                              | IEEE 802.11b   | 0.017 / 12.40           |
|                              | IEEE 802.11g   | 0.024 / 13.80           |
| Max. SAR Measurement         | 0.197 W/kg Body SAR  |                         |
| Antenna Type                 | Internal Type  |                         |
| Device Category              | Portable Device  |                         |
| RF Exposure Environment      | General Population / Uncontrolled  |                         |
| Application Type             | Certification  |                         |

This wireless portable device has been shown to be capable of compliance for localized specific absorption rate (SAR) for uncontrolled environment / general population exposure limits specified in Standard C95.1-1999 and had been tested in accordance with the measurement procedures specified in IEEE Std. 1528-2003 and IEEE Std. 1528a-2005.

## 2. Introduction

The A Test Lab Techno Corp. has performed measurements of the maximum potential exposure to the user of **VTech Electronics Ltd. Trade Name : vtech Model(s) : 1568**. The test procedures, as described in American National Standards, Institute C95.1-1999 [ 1 ], FCC/OET Bulletin 65 Supplement C [July 2001] were employed and they specify the maximum exposure limit of 1.6mW/g as averaged over any 1 gram of tissue for portable devices being used within 20cm between user and EUT in the uncontrolled environment. A description of the product and operating configuration, detailed summary of the test results, methodology and procedures used in the equipment used are included within this test report.

### 2.1 SAR Definition

Specific Absorption Rate (SAR) is defined as the time derivative (rate) of the incremental energy (dw) absorbed by (dissipated in) an incremental mass (dm) contained in a volume element (dv) of a given density ( $\rho$ ). It is also defined as the rate of RF energy absorption per unit mass at a point in an absorbing body (see Figure 2).

$$\text{SAR} = \frac{d}{dt} \left( \frac{dw}{dm} \right) = \frac{d}{dt} \left( \frac{dw}{\rho dv} \right)$$

Figure 2. SAR Mathematical Equation

SAR is expressed in units of Watts per kilogram (W/kg)

$$\text{SAR} = \frac{\sigma E^2}{\rho}$$

Where :

$\sigma$  = conductivity of the tissue (S/m)

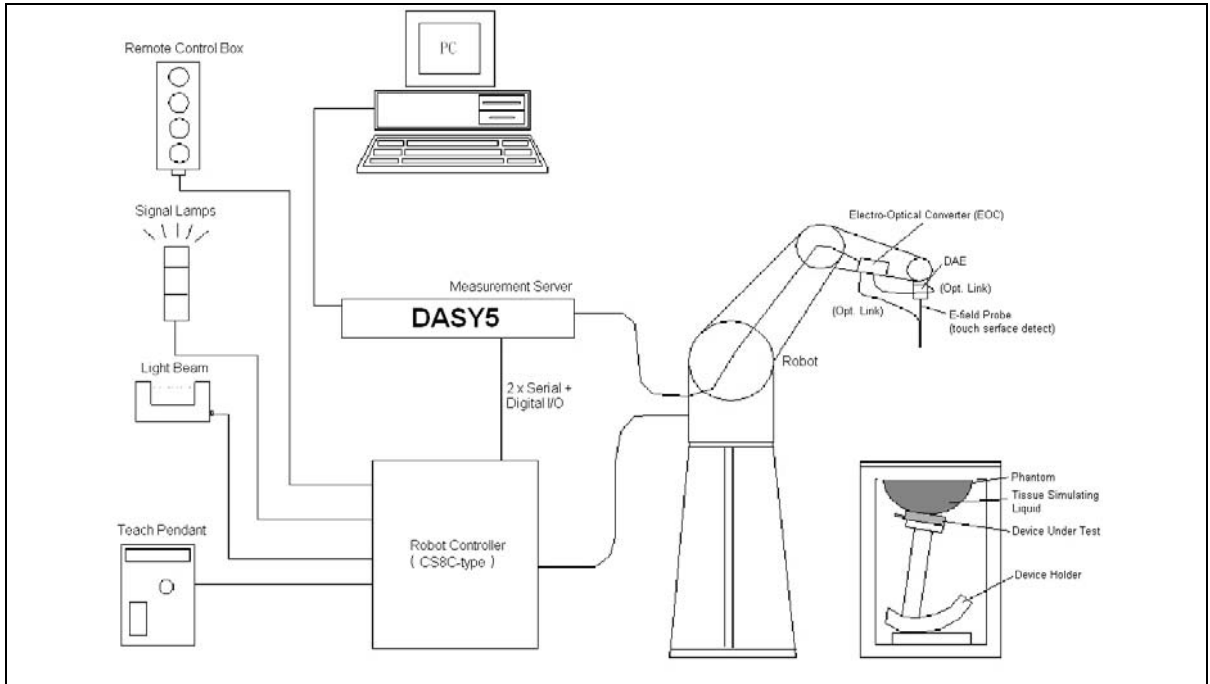
$\rho$  = mass density of the tissue (kg/m<sup>3</sup>)

$E$  = RMS electric field strength (V/m)

\*Note :

The primary factors that control rate of energy absorption were found to be the wavelength of the incident field in relations to the dimensions and geometry of the irradiated organism, the orientation of the organism in relation to the polarity of field vectors, the presence of reflecting surfaces, and whether conductive contact is made by the organism with a ground plane [ 2 ]

### 3. SAR Measurement Setup



The DASY5 system for performing compliance tests consists of the following items:

1. A standard high precision 6-axis robot (Stäubli TX family) with controller, teach pendant and software. An arm extension for accommodating the data acquisition electronics (DAE).
2. A dosimetric probe, i.e., an isotropic E-field probe optimized and calibrated for usage in tissue simulating liquid. The probe is equipped with an optical surface detector system.
3. A data acquisition electronics (DAE) which performs the signal amplification, signal multiplexing, AD-conversion, offset measurements, mechanical surface detection, collision detection, etc. The unit is battery powered with standard or rechargeable batteries. The signal is optically transmitted to the EOC.
4. The function of the measurement server is to perform the time critical tasks such as signal filtering, control of the robot operation and fast movement interrupts.
5. A probe alignment unit which improves the (absolute) accuracy of the probe positioning.
6. A computer operating Windows 2000 or Windows XP.
7. DASY5 software.
8. Remote controls with teach pendant and additional circuitry for robot safety such as warning lamps, etc.
9. The SAM twin phantom enabling testing left-hand and right-hand usage.
10. The device holder for handheld mobile phones.
11. Tissue simulating liquid mixed according to the given recipes.
12. Validation dipole kits allowing validating the proper functioning of the system.



### 3.1 DASYS E-Field Probe System

The SAR measurements were conducted with the dosimetric probe EX3DV4 (manufactured by SPEAG), designed in the classical triangular configuration [ 3 ] and optimized for dosimetric evaluation. The probe is constructed using the thick film technique; with printed resistive lines on ceramic substrates. The probe is equipped with an optical multi-fiber line ending at the front of the probe tip. It is connected to the EOC box on the robot arm and provides an automatic detection of the phantom surface. Half of the fibers are connected to a pulsed infrared transmitter, the other half to a synchronized receiver. As the probe approaches the surface, the reflection from the surface produces a coupling from the transmitting to the receiving fibers. This reflection increases first during the approach, reaches maximum and then decreases. If the probe is flatly touching the surface, the coupling is zero. The distance of the coupling maximum to the surface is independent of the surface reflectivity and largely independent of the surface to probe angle. The DASYS software reads the reflection during a software approach and looks for the maximum using a 2nd order fitting. The approach is stopped when reaching the maximum.

### 3.1.1 E-Field Probe Specification

|              |  |
|--------------|--|
| Construction | Symmetrical design with triangular core<br>Built-in optical fiber for surface detection System<br>Built-in shielding against static charges<br>PEEK enclosure material (resistant to organic solvents, e.q., glycol) |
| Calibration  | In air from 10 MHz to 6 GHz<br>In brain and muscle simulating tissue at frequencies of 2450MHz (accuracy $\pm 8\%$ )<br>Calibration for other liquids and frequencies upon request                                   |
| Frequency    | $\pm 0.2$ dB (30 MHz to 6 GHz) for EX3DV4  |
| Directivity  | $\pm 0.3$ dB in brain tissue (rotation around probe axis)<br>$\pm 0.5$ dB in brain tissue (rotation normal probe axis)<br>Dynamic Range 10 $\mu$ W/g to > 100mW/g; Linearity: $\pm 0.2$ dB                           |
| Dimensions   | Overall length: 337mm<br>Tip length: 20mm<br>Body diameter: 12mm<br>Tip diameter: 2.5mm for EX3DV4<br>Distance from probe tip to dipole centers: 1.0mm for EX3DV4  |
| Application  | General dosimetry up to 6GHz<br>Compliance tests of mobile phones<br>Fast automatic scanning in arbitrary phantoms   |



Figure 3. E-field Probe



Figure 4. Probe setup on robot



### 3.1.2 E-Field Probe Calibration process

#### Dosimetric Assessment Procedure

Each E-Probe/Probe Amplifier combination has unique calibration parameters. A TEM cell calibration procedure is conducted to determine the proper amplifier settings to enter in the probe parameters. The amplifier settings are determined for a given frequency by subjecting the probe to a known E-field density (1 mW/cm<sup>2</sup>) using an RF Signal generator, TEM cell, and RF Power Meter.

#### Free Space Assessment

The free space E-field from amplified probe outputs is determined in a test chamber. This calibration can be performed in a TEM cell if the frequency is below 1 GHz and in a waveguide or other methodologies above 1 GHz for free space. For the free space calibration, the probe is placed in the volumetric center of the cavity and at the proper orientation with the field. The probe is rotated 360 degrees until the three channels show the maximum reading. The power density readings equates to 1 mW/cm<sup>2</sup>.

#### Temperature Assessment

E-field temperature correlation calibration is performed in a flat phantom filled with the appropriate simulated head tissue. The E-field in the medium correlates with the temperature rise in the dielectric medium. For temperature correlation calibration a RF transparent thermistor-based temperature probe is used in conjunction with the E-field probe.

$$SAR = C \frac{\Delta T}{\Delta t}$$

Where :

$\Delta t$  = Exposure time (30 seconds),

C = Heat capacity of tissue (head or body),

$\Delta T$  = Temperature increase due to RF exposure.

$$\text{Or } SAR = \frac{|E|^2 \sigma}{\rho}$$

Where :

$\sigma$  = Simulated tissue conductivity,

$\rho$  = Tissue density (kg/m<sup>3</sup>).





## 3.2 Data Acquisition Electronic (DAE) System

### Cell Controller

Processor : Intel Core(TM)2 CPU  
Clock Speed : @ 1.86GHz  
Operating System : Windows XP Professional

### Data Converter

Features : Signal Amplifier, multiplexer, A/D converter, and control logic  
Software : DASY5 v5.0 (Build 125) & SEMCAD X Version 13.4 Build 125  
Connecting Lines : Optical downlink for data and status info  
Optical uplink for commands and clock

## 3.3 Robot

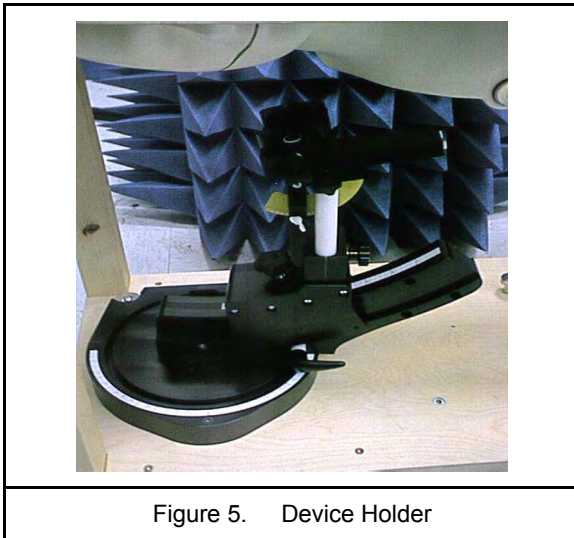
Positioner : Stäubli Unimation Corp. Robot Model: TX90XL  
Repeatability :  $\pm 0.02$  mm  
No. of Axis : 6

## 3.4 Measurement Server

Processor : PC/104 with a 400MHz intel ULV Celeron  
I/O-board : Link to DAE4 (or DAE3)  
16-bit A/D converter for surface detection system  
Digital I/O interface  
Serial link to robot  
Direct emergency stop output for robot

### 3.5 Device Holder

The DASY device holder is constructed of low-loss POM material having the following dielectric parameters: relative permittivity  $\epsilon=3$  and loss tangent  $\delta=0.02$ . The amount of dielectric material has been reduced in the closest vicinity of the device, since measurements have suggested that the influence of the clamp on the test results could thus be lowered.



### 3.6 Phantom - SAM v4.0

The shell corresponds to the specifications of the Specific Anthropomorphic Mannequin (SAM) phantom defined in IEEE 1528 and IEC 62209. It enables the dosimetric evaluation of left and right hand phone usage as well as body mounted usage at the flat phantom region. A cover prevents evaporation of the liquid. Reference markings on the phantom allow the complete setup of all predefined phantom positions and measurement grids by manually teaching three points with the robot.

|                                    |                   |
|------------------------------------|-------------------|
| Shell Thickness                    | 2 ±0.2 mm         |
| Filling Volume                     | Approx. 25 liters |
| Dimensions                         | 1000x500 mm (LxW) |
| Table 1. Specification of SAM v4.0 |                   |



### 3.7 Oval Flat Phantom - ELI 5.0

The shell corresponds to the specifications of the Specific Anthropomorphic Mannequin (Oval Flat) phantom defined in IEEE 1528-2003, IEEE Std. 1528a-2005, CENELEC 50361 and IEC 62209. It enables the dosimetric evaluation of wireless portable device usage as well as body mounted usage at the flat phantom region. A cover prevents evaporation of the liquid. Reference markings on the phantom allow the complete setup of all predefined phantom positions and measurement grids by manually teaching three points with the robot.

|                                   |                           |
|-----------------------------------|---------------------------|
| Shell Thickness                   | 2 ±0.2 mm                 |
| Filling Volume                    | Approx. 30 liters         |
| Dimensions                        | 190×600×400 mm<br>(H×L×W) |
| Table 2. Specification of ELI 5.0 |                           |

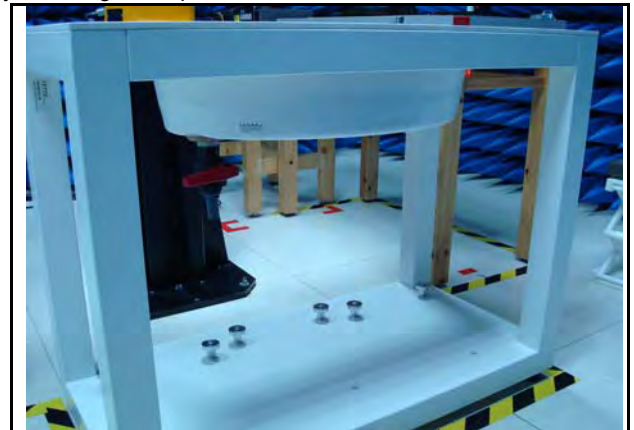


Figure 7. Oval Flat Phantom

### 3.8 Data Storage and Evaluation

#### 3.8.1 Data Storage

The DASY5 software stores the assessed data from the data acquisition electronics as raw data (in microvolt readings from the probe sensors), together with all the necessary software parameters for the data evaluation (probe calibration data, liquid parameters and device frequency and modulation data) in measurement files with the extension DA5. The post processing software evaluates the desired unit and format for output each time the data is visualized or exported. This allows verification of the complete software setup even after the measurement and allows correction of erroneous parameter settings. For example, if a measurement has been performed with an incorrect crest factor parameter in the device setup, the parameter can be corrected afterwards and the data can be reevaluated.



### 3.8.2 Data Evaluation

The DASY5 post processing software (SEMCAD) automatically executes the following procedures to calculate the field units from the microvolt readings at the probe connector. The parameters used in the evaluation are stored in the configuration modules of the software :

- Probe parameters : - Sensitivity  $Norm_i, ai0, ai1, ai2$   
- Conversion factor  $ConvFi$   
- Diode compression point  $dcp_i$
- Device parameters : - Frequency  $f$   
- Crest factor  $cf$
- Media parameters : - Conductivity  $\sigma$   
- Density  $\rho$

These parameters must be set correctly in the software. They can be found in the component documents or they can be imported into the software from the configuration files issued for the DASY components. In the direct measuring mode of the multimeter option, the parameters of the actual system setup are used. In the scan visualization and export modes, the parameters stored in the corresponding document files are used.

The first step of the evaluation is a linearization of the filtered input signal to account for the compression characteristics of the detector diode. The compensation depends on the input signal, the diode type and the DC-transmission factor from the diode to the evaluation electronics. If the exciting field is pulsed, the crest factor of the signal must be known to correctly compensate for peak power. The formula for each channel can be given as :

$$V_i = U_i + U_i^2 \cdot \frac{cf}{dcp_i}$$

- With  $V_i$  = compensated signal of channel i (i = x, y, z)  
 $U_i$  = input signal of channel i (i = x, y, z)  
 $cf$  = crest factor of exciting field (DASY parameter)  
 $dcp_i$  = diode compression point (DASY parameter)

From the compensated input signals the primary field data for each channel can be evaluated :

E-field probes : 
$$E_i = \sqrt{\frac{V_i}{Norm_i \cdot ConvF}}$$

$$H_i = \sqrt{V_i} \cdot \frac{a_{i0} + a_{i1}f + a_{i2}f^2}{f}$$

H-field probes :

- with  $V_i$  = compensated signal of channel i (i = x, y, z)  
*Normi* = sensor sensitivity of channel i (i = x, y, z)  
 $\mu V/(V/m)^2$  for E-field Probes  
*ConvF* = sensitivity enhancement in solution  
 $a_{ij}$  = sensor sensitivity factors for H-field probes  
 $f$  = carrier frequency [GHz]  
 $E_i$  = electric field strength of channel i in V/m  
 $H_i$  = magnetic field strength of channel i in A/m

The RSS value of the field components gives the total field strength (Hermitian magnitude) :

$$E_{tot} = \sqrt{E_x^2 + E_y^2 + E_z^2}$$

The primary field data are used to calculate the derived field units.

$$SAR = E_{tot}^2 \cdot \frac{\sigma}{\rho \cdot 1000}$$

- with  $SAR$  = local specific absorption rate in mW/g  
 $E_{tot}$  = total field strength in V/m  
 $\sigma$  = conductivity in [mho/m] or [Siemens/m]  
 $\rho$  = equivalent tissue density in g/cm<sup>3</sup>

\* Note : That the density is set to 1, to account for actual head tissue density rather than the density of the tissue simulating liquid.

The power flow density is calculated assuming the excitation field to be a free space field.

$$P_{pwe} = \frac{E_{tot}^2}{3770} \quad \text{or} \quad P_{pwe} = \frac{H_{tot}^2}{37.7}$$

- with  $P_{pwe}$  = equivalent power density of a plane wave in mW/cm<sup>2</sup>  
 $E_{tot}$  = total electric field strength in V/m  
 $H_{tot}$  = total magnetic field strength in A/m



#### 4. Tissue Simulating Liquids

The mixture is calibrated to obtain proper dielectric constant (permittivity) and conductivity of the tissue.

The dielectric parameters of the liquids were verified prior to the SAR evaluation using an 85070C Dielectric Probe Kit and an E5071B Network Analyzer.

##### IEEE SCC-34/SC-2 in 1528 recommended Tissue Dielectric Parameters

The head tissue dielectric parameters recommended by the IEEE SCC-34/SC-2 in 1528 have been incorporated in the following table. These head parameters are derived from planar layer models simulating the highest expected SAR for the dielectric properties and tissue thickness variations in human head. Other head and body tissue parameters that have not been specified in 1528 are derived from the tissue dielectric parameters computed from the 4-Cole-Cole equation and extrapolated according to the head parameter specified in 1528.

| Target Frequency  | Head         |                | Body         |                |
|---|--------------|----------------|--------------|----------------|
| (MHz)   | $\epsilon_r$ | $\sigma$ (S/m) | $\epsilon_r$ | $\sigma$ (S/m) |
| 150   | 52.3         | 0.76           | 61.9         | 0.80           |
| 300   | 45.3         | 0.87           | 58.2         | 0.92           |
| 450   | 43.5         | 0.87           | 56.7         | 0.94           |
| 835   | 41.5         | 0.90           | 55.2         | 0.97           |
| 900   | 41.5         | 0.97           | 55.0         | 1.05           |
| 915   | 41.5         | 0.98           | 55.0         | 1.06           |
| 1450  | 40.5         | 1.20           | 54.0         | 1.30           |
| 1610  | 40.3         | 1.29           | 53.8         | 1.40           |
| 1800 - 2000   | 40.0         | 1.40           | 53.3         | 1.52           |
| 2450  | 39.2         | 1.80           | 52.7         | 1.95           |
| 3000  | 38.5         | 2.40           | 52.0         | 2.73           |
| 5800  | 35.3         | 5.27           | 48.2         | 6.00           |
| ( $\epsilon_r$ = relative permittivity, $\sigma$ = conductivity and $\rho = 1000$ kg/m <sup>3</sup> ) |              |                |              |                |

Table 3. Tissue dielectric parameters for head and body phantoms



## 4.1 Ingredients

The following ingredients are used:

- Water: deionized water (pure H<sub>2</sub>O), resistivity  $\geq 16 \text{ M } \Omega$  -as basis for the liquid
- Sugar: refined white sugar (typically 99.7 % sucrose, available as crystal sugar in food shops)  
-to reduce relative permittivity
- Salt: pure NaCl -to increase conductivity
- Cellulose: Hydroxyethyl-cellulose, medium viscosity (75-125 mPa.s, 2% in water, 20 °C), CAS # 54290 -to increase viscosity and to keep sugar in solution.
- Preservative: Preventol D-7 Bayer AG, D-51368 Leverkusen, CAS # 55965-84-9 -to prevent the spread of bacteria and molds
- DGBE: Diethylenglycol-monobutyl ether (DGBE), Fluka Chemie GmbH, CAS # 112-34-5 -to reduce relative permittivity

## 4.2 Recipes

The following tables give the recipes for tissue simulating liquids to be used in different frequency bands.

Note: The goal dielectric parameters (at 22 °C) must be achieved within a tolerance of  $\pm 5\%$  for  $\epsilon$  and  $\pm 5\%$  for  $\sigma$ .

| Ingredients<br>(% by weight) | Frequency (MHz) |       |       |      |       |       |       |      |      |      |
|------------------------------|-----------------|-------|-------|------|-------|-------|-------|------|------|------|
|                              | 450             |       | 835   |      | 915   |       | 1900  |      | 2450 |      |
| Tissue Type                  | Head            | Body  | Head  | Body | Head  | Body  | Head  | Body | Head | Body |
| Water                        | 38.56           | 51.16 | 41.45 | 52.4 | 41.05 | 56.0  | 54.9  | 40.4 | 62.7 | 73.2 |
| Salt (NaCl)                  | 3.95            | 1.49  | 1.45  | 1.4  | 1.35  | 0.76  | 0.18  | 0.5  | 0.5  | 0.04 |
| Sugar                        | 56.32           | 46.78 | 56.0  | 45.0 | 56.5  | 41.76 | 0.0   | 58.0 | 0.0  | 0.0  |
| HEC                          | 0.98            | 0.52  | 1.0   | 1.0  | 1.0   | 1.21  | 0.0   | 1.0  | 0.0  | 0.0  |
| Bactericide                  | 0.19            | 0.05  | 0.1   | 0.1  | 0.1   | 0.27  | 0.0   | 0.1  | 0.0  | 0.0  |
| Triton X-100                 | 0.0             | 0.0   | 0.0   | 0.0  | 0.0   | 0.0   | 0.0   | 0.0  | 36.8 | 0.0  |
| DGBE                         | 0.0             | 0.0   | 0.0   | 0.0  | 0.0   | 0.0   | 44.92 | 0.0  | 0.0  | 26.7 |
| Dielectric Constant          | 43.42           | 58.0  | 42.54 | 56.1 | 42.0  | 56.8  | 39.9  | 54.0 | 39.8 | 52.5 |
| Conductivity (S/m)           | 0.85            | 0.83  | 0.91  | 0.95 | 1.0   | 1.07  | 1.42  | 1.45 | 1.88 | 1.78 |

Salt: 99% Pure Sodium Chloride

Sugar: 98% Pure Sucrose

Water: De-ionized,  $16 \text{ M } \Omega$  resistivity

HEC: Hydroxyethyl Cellulose

DGBE: 99% Di(ethylene glycol) butyl ether, [2-(2-butoxyethoxy)ethanol]

Triton X-100 (ultra pure): Polyethylene glycol mono [4-(1,1, 3, 3-tetramethylbutyl)phenyl]ether

### 4.3 Liquid Confirmation

#### 4.3.1 Parameters

| Liquid Verify   |           |           |              |              |                |               |           |               |
|---|-----------|-----------|--------------|--------------|----------------|---------------|-----------|---------------|
| Ambient Temperature : 22 ± 2 °C ; Relative Humidity : 40 -70% |           |           |              |              |                |               |           |               |
| Liquid Type   | Frequency | Temp (°C) | Parameters   | Target Value | Measured Value | Deviation (%) | Limit (%) | Measured Date |
| 2450MHz Body  | 2400MHz   | 22.0      | $\epsilon_r$ | 52.77        | 52.15          | -1.18%        | ± 5       | 11/19/2012    |
|   |           |           | $\sigma$     | 1.902        | 1.895          | -0.37%        | ± 5       |               |
|   | 2450MHz   | 22.0      | $\epsilon_r$ | 52.70        | 51.91          | -1.50%        | ± 5       |               |
|   |           |           | $\sigma$     | 1.950        | 1.962          | 0.62%         | ± 5       |               |
|   | 2500MHz   | 22.0      | $\epsilon_r$ | 52.64        | 51.85          | -1.50%        | ± 5       |               |
|   |           |           | $\sigma$     | 2.021        | 2.015          | -0.30%        | ± 5       |               |

Table 4. Measured Tissue dielectric parameters for body phantoms

#### 4.3.2 Liquid Depth

The liquid level was during measurement 15cm ±0.5cm.



Figure 8. Flat Position





## 5. SAR Testing with RF Transmitters

### 5.1 SAR Testing with 802.11 Transmitters

Normal network operating configurations are not suitable for measuring the SAR of 802.11 b/g transmitters. Unpredictable fluctuations in network traffic and antenna diversity conditions can introduce undesirable variations in SAR results. The SAR for these devices should be measured using chipset based test mode software to ensure the results are consistent and reliable.

#### 5.1.1 General Device Setup

Chipset based test mode software is hardware dependent and generally varies among manufacturers. The device operating parameters established in test mode for SAR measurements must be identical to those programmed in production units, including output power levels, amplifier gain settings and other RF performance tuning parameters. The test frequencies should correspond to actual channel frequencies defined for domestic use. SAR for devices with switched diversity should be measured with only one antenna transmitting at a time during each SAR measurement, according to a fixed modulation and data rate. The same data pattern should be used for all measurements.

#### 5.1.2 Frequency Channel Configurations

802.11 a/b/g and 4.9 GHz operating modes are tested independently according to the service requirements in each frequency band. 802.11 b/g modes are tested on channels 1, 6 and 11. 802.11a is tested for UNII operations on channels 36 and 48 in the 5.15-5.25 GHz band; channels 52 and 64 in the 5.25-5.35 GHz band; channels 104, 116, 124 and 136 in the 5.470-5.725 GHz band; and channels 149 and 161 in the 5.8 GHz band. When 5.8 GHz §15.247 is also available, channels 149, 157 and 165 should be tested instead of the UNII channels. 4.9 GHz is tested on channels 1, 10 and 5 or 6, whichever has the higher output power, for 5 MHz channels; channels 11, 15 and 19 for 10 MHz channels; and channels 21 and 25 for 20 MHz channels. These are referred to as the “default test channels”. 802.11g mode was evaluated only if the output power was 0.25 dB higher than the 802.11b mode.

| 802.11 Test Channels per FCC Requirement |      |         |               |                         |         |      |  |
|--|------|---------|---------------|-------------------------|---------|------|--|
| Mode                                     | GHz  | Channel | Turbo Channel | Default Test “Channels” |         |      |  |
|  |      |         |               | §15.247                 |         | UNII |  |
|  |      |         |               | 802.11b                 | 802.11g |      |  |
| IEEE 802.11 b/g                          | 2412 | 1       |               | ✓                       | ▽       |      |  |
|  | 2437 | 6       | 6             | ✓                       | ▽       |      |  |
|  | 2462 | 11      |               | ✓                       | ▽       |      |  |



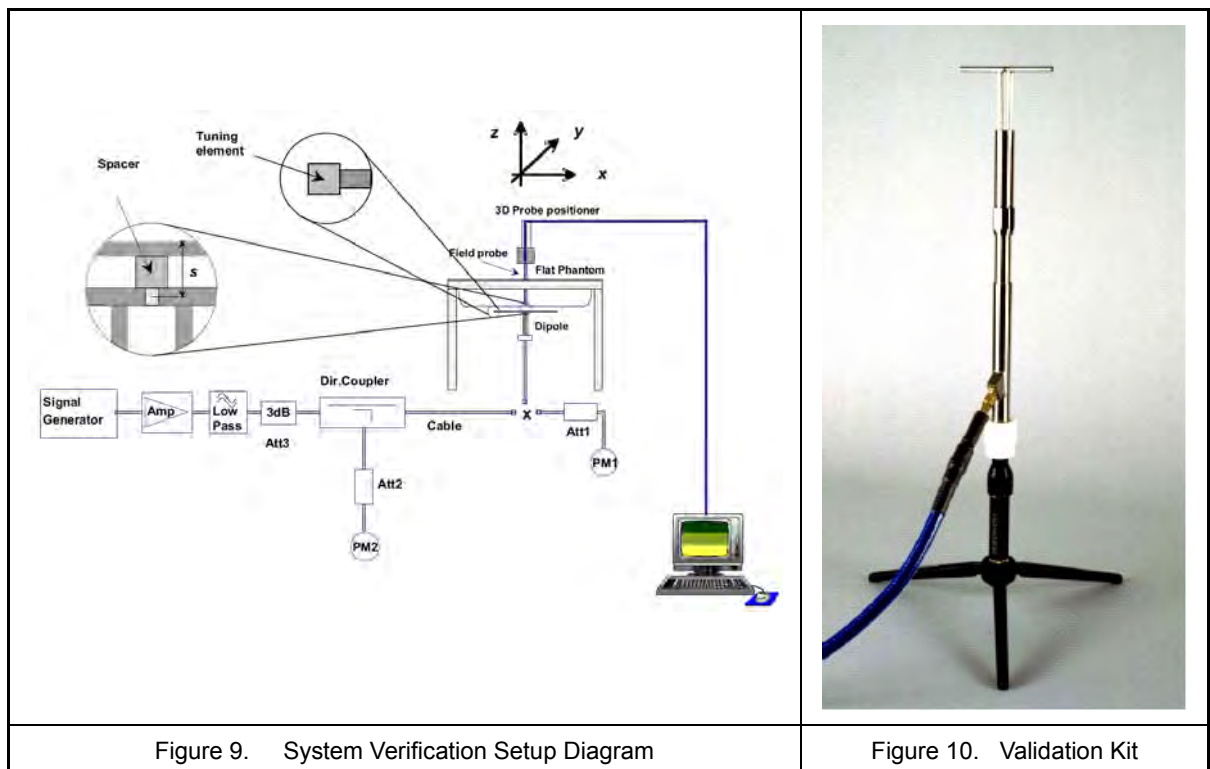
## 5.2 Conducted Power

| Band         | Data Rate | CH | Frequency (MHz) | RF Conducted Output Power (dBm) |
|--------------|-----------|----|-----------------|---------------------------------|
|              |           |    |                 | Average                         |
| IEEE 802.11b | 1 M       | 1  | 2412.0          | 12.10                           |
|              |           | 6  | 2437.0          | <b>12.40</b>                    |
|              |           | 11 | 2462.0          | 12.20                           |
|              | 2 M       | 1  | 2412.0          | 12.00                           |
|              |           | 6  | 2437.0          | 12.10                           |
|              |           | 11 | 2462.0          | 12.00                           |
|              | 5.5 M     | 1  | 2412.0          | 12.30                           |
|              |           | 6  | 2437.0          | 12.30                           |
|              |           | 11 | 2462.0          | 12.20                           |
|              | 11 M      | 1  | 2412.0          | 12.00                           |
|              |           | 6  | 2437.0          | 12.00                           |
|              |           | 11 | 2462.0          | 11.90                           |
| IEEE 802.11g | 6 M       | 1  | 2412.0          | 13.60                           |
|              |           | 6  | 2437.0          | <b>13.80</b>                    |
|              |           | 11 | 2462.0          | 13.70                           |
|              | 9 M       | 1  | 2412.0          | 13.40                           |
|              |           | 6  | 2437.0          | 13.40                           |
|              |           | 11 | 2462.0          | 13.50                           |
|              | 12 M      | 1  | 2412.0          | 13.60                           |
|              |           | 6  | 2437.0          | 13.40                           |
|              |           | 11 | 2462.0          | 13.40                           |
|              | 18 M      | 1  | 2412.0          | 13.50                           |
|              |           | 6  | 2437.0          | 13.20                           |
|              |           | 11 | 2462.0          | 13.20                           |
|              | 24 M      | 1  | 2412.0          | 13.40                           |
|              |           | 6  | 2437.0          | 13.20                           |
|              |           | 11 | 2462.0          | 13.10                           |
|              | 36 M      | 1  | 2412.0          | 13.50                           |
|              |           | 6  | 2437.0          | 13.40                           |
|              |           | 11 | 2462.0          | 13.40                           |
|              | 48 M      | 1  | 2412.0          | 13.50                           |
|              |           | 6  | 2437.0          | 13.20                           |
|              |           | 11 | 2462.0          | 13.20                           |
|              | 54 M      | 1  | 2412.0          | 13.40                           |
|              |           | 6  | 2437.0          | 13.20                           |
|              |           | 11 | 2462.0          | 13.30                           |

## 6. System Performance Check

### 6.1 Symmetric Dipoles for System Verification

|                  |   |
|------------------|---|
| Construction     | Symmetrical dipole with 1/4 balun enables measurement of feed point impedance with NWA matched for use near flat phantoms filled with head simulating solutions Includes distance holder and tripod adaptor Calibration Calibrated SAR value for specified position and input power at the flat phantom in head simulating solutions. |
| Frequency        | 2450 MHz  |
| Return Loss      | > 20 dB at specified verification position  |
| Power Capability | > 100 W (f < 1GHz); > 40 W (f > 1GHz)   |
| Options          | Dipoles for other frequencies or solutions and other calibration conditions are available upon request  |
| Dimensions       | D2450V2: dipole length 51.5 mm; overall height 300 mm   |



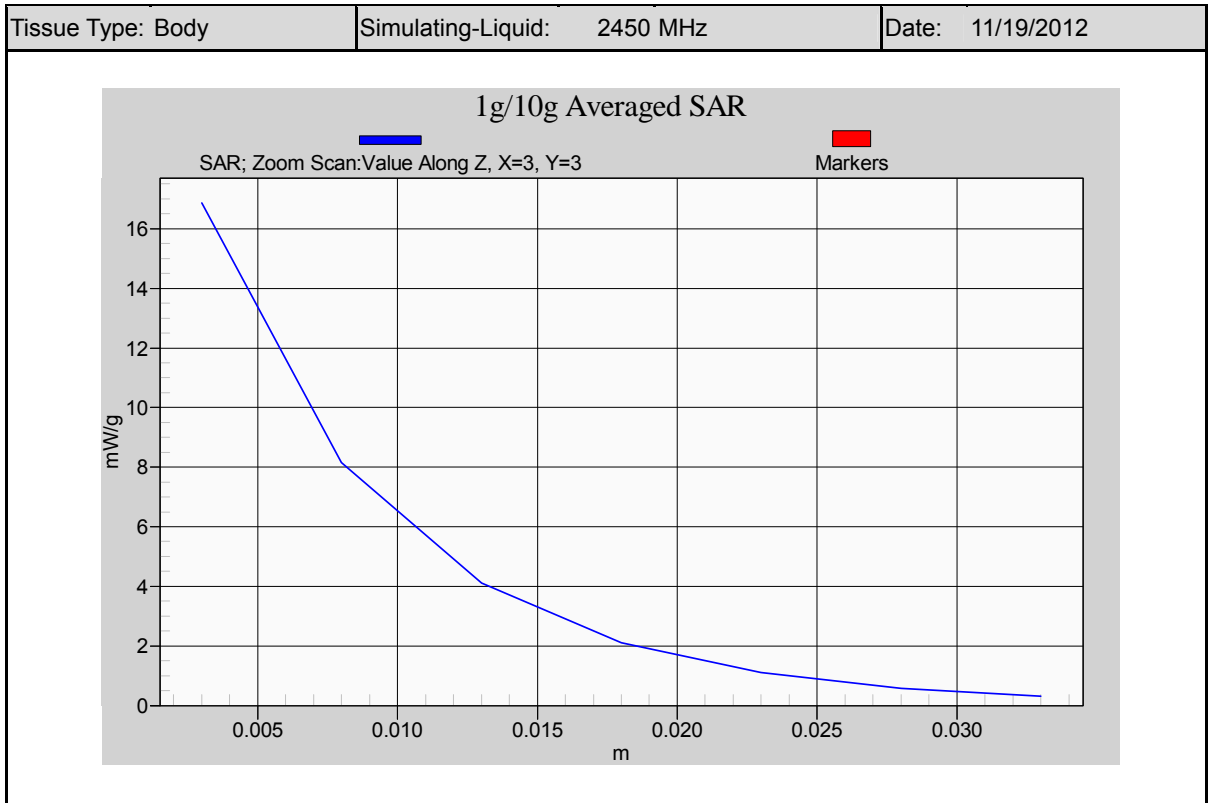


## 6.2 Verification

Prior to the assessment, the system validation kit was used to test whether the system was operating within its specifications of  $\pm 7\%$ . The verification was performed at 2450MHz.

| Validation kit  |                     | Mixture Type             | SAR <sub>1g</sub> [mW/g]  |            | SAR <sub>10g</sub> [mW/g] |      | Date of Calibration |
|-----------------|---------------------|--------------------------|---------------------------|------------|---------------------------|------|---------------------|
| D2450V2-SN712   |                     | Body                     | 49.90                     |            | 23.60                     |      | 02/23/2012          |
| Frequency (MHz) | Power (dBm)         | SAR <sub>1g</sub> (mW/g) | SAR <sub>10g</sub> (mW/g) | Drift (dB) | Difference percentage     |      | Date                |
|                 |                     |                          |                           |            | 1g                        | 10g  |                     |
| 2450 (Body)     | 250mW               | 12.80                    | 5.90                      | 0.047      | 2.6%                      | 0.0% | 11/19/2012          |
|                 | Normalize to 1 Watt | 51.20                    | 23.60                     |            |                           |      |                     |

### Z-axis Plot of System Performance Check





## 7. Test Equipment List

| Manufacturer  | Name of Equipment             | Type/Model             | Serial Number        | Calibration |            |
|---------------|-------------------------------|------------------------|----------------------|-------------|------------|
|               |                               |                        |                      | Last Cal.   | Due Date   |
| SPEAG         | Dosimetric E-Field Probe      | EX3DV4                 | 3820                 | 12/16/2011  | 12/16/2012 |
| SPEAG         | 2450MHz System Validation Kit | D2450V2                | 712                  | 02/23/2012  | 02/23/2013 |
| SPEAG         | Data Acquisition Electronics  | DAE4                   | 779                  | 01/23/2012  | 01/23/2013 |
| SPEAG         | Measurement Server            | SE UMS 011 AA          | 1025                 | NCR         |            |
| SPEAG         | Device Holder                 | N/A                    | N/A                  | NCR         |            |
| SPEAG         | Phantom                       | ELI 5.0                | TP:1133              | NCR         |            |
| SPEAG         | Robot                         | Staubli TX90XL         | F07/564ZA1/C/01      | NCR         |            |
| SPEAG         | Software                      | DASY5 V5.0 Build 125   | N/A                  | NCR         |            |
| SPEAG         | Software                      | SEMCAD V13.4 Build 125 | N/A                  | NCR         |            |
| Agilent       | Dielectric Probe Kit          | 85070C                 | US99360094           | NCR         |            |
| Agilent       | ENA Series Network Analyzer   | E5071B                 | MY42404655           | 04/05/2012  | 04/05/2014 |
| R&S           | Power Sensor                  | NRP-Z22                | 100179               | 05/16/2012  | 05/16/2013 |
| Agilent       | MXG Vector Signal Generator   | N5182A                 | MY47420962           | 05/24/2011  | 05/24/2013 |
| Agilent       | Dual Directional Coupler      | 778D                   | 50334                | NCR         |            |
| Mini-Circuits | Power Amplifier               | ZHL-42W-SMA            | D111103#5            | NCR         |            |
| Mini-Circuits | Power Amplifier               | ZVE-8G-SMA             | D042005<br>671800514 | NCR         |            |
| Aisi          | Attenuator                    | IEAT 3dB               | N/A                  | NCR         |            |

Table 5. Test Equipment List



## **8. Measurement Uncertainty**

Measurement uncertainties in SAR measurements are difficult to quantify due to several variables including biological, physiological, and environmental. However, we estimate the measurement uncertainties in SAR to be less than  $\pm 19.62\%$  [ 8 ] . The frequency range of the measurement uncertainty is 750 ~ 5800MHz  $\pm 10.1\%$

According to Std. C95.3 [ 9 ] , the overall uncertainties are difficult to assess and will vary with the type of meter and usage situation. However, accuracy's of  $\pm 1$  to 3 dB can be expected in practice, with greater uncertainties in near-field situations and at higher frequencies (shorter wavelengths), or areas where large reflecting objects are present. Under optimum measurement conditions, SAR measurement uncertainties of at least  $\pm 2$ dB can be expected.

According to CENELEC [ 10 ] , typical worst-case uncertainty of field measurements is  $\pm 5$  dB. For well-defined modulation characteristics the uncertainty can be reduced to  $\pm 3$  dB.



| Uncertainty Component  | Uncertainty Value | Probability Distribution | Divisor    | $c_i$ (1g) | $c_i$ (10g) | Standard Uncertainty $\pm 1\%$ (1-g) | Standard Uncertainty $\pm 1\%$ (10-g) | $v_i$ or $v_{eff}$ |
|--|-------------------|--------------------------|------------|------------|-------------|--------------------------------------|---------------------------------------|--------------------|
| Measurement System   |                   |                          |            |            |             |                                      |                                       |                    |
| Probe Calibration (k=1)  | $\pm 5.05\%$      | Normal                   | 1          | 1          | 1           | $\pm 5.05\%$                         | $\pm 5.05\%$                          | $\infty$           |
| Probe Isotropy   | $\pm 7.6\%$       | Rectangular              | $\sqrt{3}$ | 0.7        | 0.7         | $\pm 3.1\%$                          | $\pm 3.1\%$                           | $\infty$           |
| Boundary Effect  | $\pm 1.0\%$       | Rectangular              | $\sqrt{3}$ | 1          | 1           | $\pm 0.6\%$                          | $\pm 0.6\%$                           | $\infty$           |
| Linearity  | $\pm 4.7\%$       | Rectangular              | $\sqrt{3}$ | 1          | 1           | $\pm 2.7\%$                          | $\pm 2.7\%$                           | $\infty$           |
| System Detection Limit   | $\pm 1.0\%$       | Rectangular              | $\sqrt{3}$ | 1          | 1           | $\pm 0.58\%$                         | $\pm 0.58\%$                          | $\infty$           |
| Readout Electronics  | $\pm 0.3\%$       | Normal                   | 1          | 1          | 1           | $\pm 0.3\%$                          | $\pm 0.3\%$                           | $\infty$           |
| Response Time  | $\pm 0.8\%$       | Rectangular              | $\sqrt{3}$ | 1          | 1           | $\pm 0.5\%$                          | $\pm 0.5\%$                           | $\infty$           |
| Integration Time   | $\pm 2.6\%$       | Rectangular              | $\sqrt{3}$ | 1          | 1           | $\pm 1.5\%$                          | $\pm 1.5\%$                           | $\infty$           |
| RF Ambient Conditions  | $\pm 0\%$         | Rectangular              | $\sqrt{3}$ | 1          | 1           | $\pm 0\%$                            | $\pm 0\%$                             | $\infty$           |
| RF Ambient Reflections   | $\pm 0\%$         | Rectangular              | $\sqrt{3}$ | 1          | 1           | $\pm 0\%$                            | $\pm 0\%$                             | $\infty$           |
| Probe Positioner Mechanical Tolerance                                | $\pm 0.4\%$       | Rectangular              | $\sqrt{3}$ | 1          | 1           | $\pm 0.2\%$                          | $\pm 0.2\%$                           | $\infty$           |
| Probe Positioning with respect to Phantom Shell                      | $\pm 2.9\%$       | Rectangular              | $\sqrt{3}$ | 1          | 1           | $\pm 1.7\%$                          | $\pm 1.7\%$                           | $\infty$           |
| Extrapolation, interpolation and integration Algorithms for Max. SAR | $\pm 1.0\%$       | Rectangular              | $\sqrt{3}$ | 1          | 1           | $\pm 0.6\%$                          | $\pm 0.6\%$                           | $\infty$           |
| Test sample Related  |                   |                          |            |            |             |                                      |                                       |                    |
| Test sample Positioning  | $\pm 3.6\%$       | Normal                   | 1          | 1          | 1           | $\pm 3.6\%$                          | $\pm 3.6\%$                           | 89                 |
| Device Holder Uncertainty  | $\pm 3.5\%$       | Normal                   | 1          | 1          | 1           | $\pm 3.5\%$                          | $\pm 3.5\%$                           | 5                  |
| Output Power Variation - SAR drift measurement                       | $\pm 5.0\%$       | Rectangular              | $\sqrt{3}$ | 1          | 1           | $\pm 2.9\%$                          | $\pm 2.9\%$                           | $\infty$           |
| Phantom and Tissue Parameters  |                   |                          |            |            |             |                                      |                                       |                    |
| Phantom Uncertainty ( shape and thickness tolerances)                | $\pm 4.0\%$       | Rectangular              | $\sqrt{3}$ | 1          | 1           | $\pm 2.3\%$                          | $\pm 2.3\%$                           | $\infty$           |
| Liquid Conductivity - deviation from target values                   | $\pm 5.0\%$       | Rectangular              | $\sqrt{3}$ | 0.64       | 0.43        | $\pm 1.8\%$                          | $\pm 1.2\%$                           | $\infty$           |
| Liquid Conductivity - measurement uncertainty                        | $\pm 1.93\%$      | Normal                   | 1          | 0.64       | 0.43        | $\pm 1.24\%$                         | $\pm 0.83\%$                          | 69                 |
| Liquid Permittivity - deviation from target values                   | $\pm 5.0$         | Rectangular              | $\sqrt{3}$ | 0.6        | 0.49        | $\pm 1.7\%$                          | $\pm 1.4\%$                           | $\infty$           |
| Liquid Permittivity - measurement uncertainty                        | $\pm 1.4\%$       | Normal                   | 1          | 0.6        | 0.49        | $\pm 0.84\%$                         | $\pm 0.69\%$                          | 69                 |
| Combined standard uncertainty  |                   | RSS                      |            |            |             | $\pm 9.81\%$                         | $\pm 9.62\%$                          | 313                |
| Expanded uncertainty (95% CONFIDENCE LEVEL )                         |                   | k=2                      |            |            |             | $\pm 19.62\%$                        | $\pm 19.24\%$                         |                    |

Table 6. System uncertainty: 300MHz -3000MHz



| Uncertainty Component         | Uncertainty Value | Probability Distribution | Divisor    | $c_i$ (1g) | $c_i$ (10g) | Standard Uncertainty $\pm 1\%$ (1-g) | Standard Uncertainty $\pm 1\%$ (10-g) | $V_i$ or $V_{eff}$ |
|-------------------------------|-------------------|--------------------------|------------|------------|-------------|--------------------------------------|---------------------------------------|--------------------|
| Measurement System            |                   |                          |            |            |             |                                      |                                       |                    |
| Probe Calibration             | $\pm 6.55\%$      | Normal                   | 1          | 1          | 1           | $\pm 6.55\%$                         | $\pm 6.55\%$                          | $\infty$           |
| Axial Isotropy                | $\pm 4.7\%$       | Rectangular              | $\sqrt{3}$ | 1          | 1           | $\pm 2.7\%$                          | $\pm 2.7\%$                           | $\infty$           |
| Hemispherical Isotropy        | $\pm 9.6\%$       | Rectangular              | $\sqrt{3}$ | 0          | 0           | $\pm 0\%$                            | $\pm 0\%$                             | $\infty$           |
| Boundary Effects              | $\pm 1.0\%$       | Rectangular              | $\sqrt{3}$ | 1          | 1           | $\pm 0.6\%$                          | $\pm 0.6\%$                           | $\infty$           |
| Linearity                     | $\pm 4.7\%$       | Rectangular              | $\sqrt{3}$ | 1          | 1           | $\pm 2.7\%$                          | $\pm 2.7\%$                           | $\infty$           |
| System Detection Limits       | $\pm 1.0\%$       | Rectangular              | $\sqrt{3}$ | 1          | 1           | $\pm 0.6\%$                          | $\pm 0.6\%$                           | $\infty$           |
| Modulation Response           | $\pm 0\%$         | Rectangular              | $\sqrt{3}$ | 1          | 1           | $\pm 0\%$                            | $\pm 0\%$                             | $\infty$           |
| Readout Electronics           | $\pm 0.3\%$       | Normal                   | 1          | 1          | 1           | $\pm 0.3\%$                          | $\pm 0.3\%$                           | $\infty$           |
| Response Time                 | $\pm 0\%$         | Rectangular              | $\sqrt{3}$ | 1          | 1           | $\pm 0\%$                            | $\pm 0\%$                             | $\infty$           |
| Integration Time              | $\pm 0\%$         | Rectangular              | $\sqrt{3}$ | 1          | 1           | $\pm 0\%$                            | $\pm 0\%$                             | $\infty$           |
| RF Ambient Noise              | $\pm 1.0\%$       | Rectangular              | $\sqrt{3}$ | 1          | 1           | $\pm 0.6\%$                          | $\pm 0.6\%$                           | $\infty$           |
| RF Ambient Reflections        | $\pm 1.0\%$       | Rectangular              | $\sqrt{3}$ | 1          | 1           | $\pm 0.6\%$                          | $\pm 0.6\%$                           | $\infty$           |
| Probe Positioner              | $\pm 0.8\%$       | Rectangular              | $\sqrt{3}$ | 1          | 1           | $\pm 0.5\%$                          | $\pm 0.5\%$                           | $\infty$           |
| Probe Positioning             | $\pm 6.7\%$       | Rectangular              | $\sqrt{3}$ | 1          | 1           | $\pm 3.9\%$                          | $\pm 3.9\%$                           | $\infty$           |
| Max. SAR Eval.                | $\pm 2.0\%$       | Rectangular              | $\sqrt{3}$ | 1          | 1           | $\pm 1.2\%$                          | $\pm 1.2\%$                           | $\infty$           |
| Dipole Related                |                   |                          |            |            |             |                                      |                                       |                    |
| Deviation of exp. dipole      | $\pm 5.5\%$       | Rectangular              | $\sqrt{3}$ | 1          | 1           | $\pm 3.2\%$                          | $\pm 3.2\%$                           | $\infty$           |
| Dipole Axis to Liquid Dist.   | $\pm 2.0\%$       | Rectangular              | $\sqrt{3}$ | 1          | 1           | $\pm 1.2\%$                          | $\pm 1.2\%$                           | $\infty$           |
| Input power & SAR drift       | $\pm 3.4\%$       | Rectangular              | $\sqrt{3}$ | 1          | 1           | $\pm 2.0\%$                          | $\pm 2.0\%$                           | $\infty$           |
| Phantom and Setup             |                   |                          |            |            |             |                                      |                                       |                    |
| Phantom Uncertainty           | $\pm 4.0\%$       | Rectangular              | $\sqrt{3}$ | 1          | 1           | $\pm 2.3\%$                          | $\pm 2.3\%$                           | $\infty$           |
| SAR correction                | $\pm 1.9\%$       | Rectangular              | $\sqrt{3}$ | 1          | 0.84        | $\pm 1.1\%$                          | $\pm 0.9\%$                           | $\infty$           |
| Liquid Conductivity (meas.)   | $\pm 2.5\%$       | Normal                   | 1          | 0.78       | 0.71        | $\pm 2.0\%$                          | $\pm 1.8\%$                           | $\infty$           |
| Liquid Permittivity (meas.)   | $\pm 2.5\%$       | Normal                   | 1          | 0.26       | 0.26        | $\pm 0.7\%$                          | $\pm 0.7\%$                           | $\infty$           |
| Temp. unc. -Conductivity      | $\pm 1.7\%$       | Rectangular              | $\sqrt{3}$ | 0.78       | 0.71        | $\pm 0.8\%$                          | $\pm 0.7\%$                           | $\infty$           |
| Temp. unc. -Permittivity      | $\pm 0.3\%$       | Rectangular              | $\sqrt{3}$ | 0.23       | 0.26        | $\pm 0.0\%$                          | $\pm 0.0\%$                           | $\infty$           |
| Combined standard uncertainty |                   | RSS                      |            |            |             | $\pm 10.1\%$                         | $\pm 10.1\%$                          |                    |
| Expanded uncertainty          |                   | k=2                      |            |            |             | $\pm 20.2\%$                         | $\pm 20.1\%$                          |                    |

Table 7. Uncertainty Budget for System Validation for the 0.3 -6 GHz range



## 9. Measurement Procedure

The measurement procedures are as follows:

1. For WLAN function, engineering testing software installed on Notebook can provide continuous transmitting signal.
2. Measure output power through RF cable and power meter
3. Set scan area, grid size and other setting on the DASY software
4. Find out the largest SAR result on these testing positions of each band
5. Measure SAR results for other channels in worst SAR testing position if the SAR of highest power channel is larger than 0.8 W/kg

According to the test standard, the recommended procedure for assessing the peak spatial-average SAR value consists of the following steps:

1. Power reference measurement
2. Area scan
3. Zoom scan
4. Power drift measurement

### 9.1 Spatial Peak SAR Evaluation

The procedure for spatial peak SAR evaluation has been implemented according to the test standard. It can be conducted for 1g and 10g, as well as for user-specific masses. The DASY software includes all numerical procedures necessary to evaluate the spatial peak SAR value.

The base for the evaluation is a "cube" measurement. The measured volume must include the 1g and 10g cubes with the highest averaged SAR values. For that purpose, the center of the measured volume is aligned to the interpolated peak SAR value of a previously performed area scan.

The entire evaluation of the spatial peak values is performed within the post-processing engine (SEMCAD). The system always gives the maximum values for the 1g and 10g cubes. The algorithm to find the cube with highest averaged SAR is divided into the following stages

1. Extraction of the measured data (grid and values) from the Zoom Scan
2. Calculation of the SAR value at every measurement point based on all stored data (A/D values and measurement parameters)
3. Generation of a high-resolution mesh within the measured volume
4. Interpolation of all measured values from the measurement grid to the high-resolution grid
5. Extrapolation of the entire 3-D field distribution to the phantom surface over the distance from sensor to surface
6. Calculation of the averaged SAR within masses of 1g and 10g

### 9.2 Area & Zoom Scan Procedures

First Area Scan is used to locate the approximate location(s) of the local peak SAR value(s). The measurement grid within an Area Scan is defined by the grid extent, grid step size and grid offset. Next, in order to determine the EM field distribution in a three-dimensional spatial extension, Zoom Scan is required. The Zoom Scan measures 7x7x9 points with step size 5, 5 and 3 mm for 300 MHz to 3 GHz, and 7x7x9 points with step size 5, 5 and 3 mm for 3 GHz to 6 GHz. The Zoom Scan is performed around the highest E-field value to determine the averaged SAR-distribution over 10 g.



### **9.3 Volume Scan Procedures**

The volume scan is used for assess overlapping SAR distributions for antennas transmitting in different frequency bands. It is equivalent to an oversized zoom scan used in standalone measurements. The measurement volume will be used to enclose all the simultaneous transmitting antennas. For antennas transmitting simultaneously in different frequency bands, the volume scan is measured separately in each frequency band. In order to sum correctly to compute the 1g aggregate SAR, the DUT remain in the same test position for all measurements and all volume scan use the same spatial resolution and grid spacing (step-size is 4, 4 and 2.5 mm). When all volume scan were completed, the software, SEMCAD postprocessor can combine and subsequently superpose these measurement data to calculating the multiband SAR.

### **9.4 SAR Averaged Methods**

In DASYS, the interpolation and extrapolation are both based on the modified Quadratic Shepard's method. The interpolation scheme combines a least-square fitted function method and a weighted average method which are the two basic types of computational interpolation and approximation. Extrapolation routines are used to obtain SAR values between the lowest measurement points and the inner phantom surface. The extrapolation distance is determined by the surface detection distance and the probe sensor offset. The uncertainty increases with the extrapolation distance. To keep the uncertainty within 1% for the 1 g and 10 g cubes, the extrapolation distance should not be larger than 5 mm.

### **9.5 Power Drift Monitoring**

All SAR testing is under the DUT install full charged battery and transmit maximum output power. In DASYS measurement software, the power reference measurement and power drift measurement procedures are used for monitoring the power drift of DUT during SAR test. Both these procedures measure the field at a specified reference position before and after the SAR testing. The software will calculate the field difference in dB. If the power drift more than 5%, the SAR will be retested.



## 10. SAR Test Results Summary

### ※ EUT Side description

| Number | Side description |
|--------|------------------|
| Side 1 | Back surface     |
| Side 2 | Edge Top         |
| Side 3 | Edge Right       |

### 10.1 Body SAR

| Measurement Results  |    |             |                  |          |   |      |                          |                  |        |
|--|----|-------------|------------------|----------|---|------|--------------------------|------------------|--------|
| Band   | CH | Power (dBm) | Phantom Position | EUT Side | Spacing (mm)                            | ASSY | SAR <sub>1g</sub> [mW/g] | Power Drift (dB) | Remark |
| IEEE 802.11b<br>Data Rate: 1M  | 06 | 12.40       | Flat             | Side 1   | 0                                       | N/A  | 0.154                    | -0.104           | ---    |
|  | 06 | 12.40       | Flat             | Side 2   | 0                                       | N/A  | 0.090                    | -0.110           | ---    |
|  | 06 | 12.40       | Flat             | Side 3   | 0                                       | N/A  | 0.012                    | -0.101           | ---    |
| IEEE 802.11g<br>Data Rate: 6M  | 06 | 13.80       | Flat             | Side 1   | 0                                       | N/A  | <b>0.197</b>             | -0.153           | ---    |
|  | 06 | 13.80       | Flat             | Side 2   | 0                                       | N/A  | 0.118                    | 0.099            | ---    |
|  | 06 | 13.80       | Flat             | Side 3   | 0                                       | N/A  | 0.016                    | -0.106           | ---    |
| Std. C95.1-1999 - Safety Limit Spatial Peak Uncontrolled Exposure/General Population |    |             |                  |          | 1.6 W/kg (mW/g)<br>Averaged over 1 gram |      |                          |                  |        |

Note:

- The test data reported are the worst-case SAR value with the position set in a typical configuration. Test procedures used were according to FCC/OET Bulletin 65, Supplement C [June 2001], IEEE1528-2003 and IEEE Std. 1528a-2005.
- All modes of operation were investigated, and worst-case results are reported.
- Tissue parameters and temperatures are listed on the SAR plots.
- Batteries are fully charged for all readings.
- 802.11g power is more than 802.11b 0.25dB, therefore 802.11g Stand-alone SAR is required.
- According to antenna location, that distance of antenna to edge < 5 cm should be test.(Back Surface ,Edge Top ,Edge Right)
- Testing was performed on the channel with the highest output power. When the extrapolated maximum peak SAR for maximum output channel is <= 1.6 W/kg and the 1-g averaged SAR is <= 0.8 W/kg testing of other channels in the "default test channels" configuration is optional.
- Testing at higher data rates is not required when the maximum average output power for each of these configurations is < 0.25dB higher than those measured at the lowest data rate.
- Overall diagonal dimension of the EUT is more than 20 cm.



## 10.2 Std. C95.1-1999 RF Exposure Limit

| Human Exposure  | Population Uncontrolled Exposure<br>( W/kg ) or (mW/g) | Occupational Controlled Exposure<br>( W/kg ) or (mW/g) |
|---|--|--|
| Spatial Peak SAR*<br>(head)                             | 1.60   | 8.00   |
| Spatial Peak SAR**<br>(Whole Body)                      | 0.08   | 0.40   |
| Spatial Peak SAR***<br>(Partial-Body)                   | 1.60   | 8.00   |
| Spatial Peak SAR****<br>(Hands / Feet / Ankle / Wrist ) | 4.00   | 20.00  |

Table 8. Safety Limits for Partial Body Exposure

### Notes :

- \* The Spatial Peak value of the SAR averaged over any 1 gram of tissue.  
( defined as a tissue volume in the shape of a cube ) and over the appropriate averaging time.
- \*\* The Spatial Average value of the SAR averaged over the whole – body.
- \*\*\* The Spatial Average value of the SAR averaged over the partial – body.
- \*\*\*\* The Spatial Peak value of the SAR averaged over any 10 grams of tissue.  
( defined as a tissue volume in the shape of a cube ) and over the appropriate averaging time.

**Population / Uncontrolled Environments** : are defined as locations where there is the exposure of individuals who have no knowledge or control of their exposure.

**Occupational / Controlled Environments** : are defined as locations where there is exposure that may be incurred by persons who are aware of the potential for exposure, (i.e. as a result of employment or occupation).



## 11. Conclusion

The SAR test values found for the portable mobile phone **VTech Electronics Ltd. Trade Name : vtech Model(s) : 1568** is below the maximum recommended level of 1.6 W/kg (mW/g).

## 12. References

- [1] Std. C95.1-1999, "American National Standard safety levels with respect to human exposure to radio frequency electromagnetic fields, 300KHz to 100GHz", New York.
- [2] NCRP, National Council on Radiation Protection and Measurements, "Biological Effects and Exposure Criteria for Radio frequency Electromagnetic Fields", NCRP report NO. 86, 1986.
- [3] T. Schmid, O. Egger, and N. Kuster, "Automatic E-field scanning system for dosimetric assessments", IEEE Transactions on Microwave Theory and Techniques, vol. 44, pp, 105-113, Jan. 1996.
- [4] K. Pokovi<sup>c</sup>, T. Schmid, and N. Kuster, "Robust setup for precise calibration of E-field probes in tissue simulating liquids at mobile communications frequency", in ICECOM'97, Dubrovnik, October 15-17, 1997, pp.120-124.
- [5] K. Pokovi<sup>c</sup>, T. Schmid, and N. Kuster, "E-field probe with improved isotropy in brain simulating liquids", in Proceedings of the ELMAR, Zadar, Croatia, 23-25 June, 1996, pp.172-175.
- [6] N. Kuster, and Q. Balzano, "Energy absorption mechanism by biological bodies in the near field of dipole antennas above 300MHz", IEEE Transaction on Vehicular Technology, vol. 41, no. 1, Feb. 1992, pp. 17-23.
- [7] Robert J. Renka, "Multivariate Interpolation Of Large Sets Of Scattered Data", University of North Texas ACM Transactions on Mathematical Software, vol. 14, no. 2, June 1988 , pp. 139-148.
- [8] N. Kuster, R. Kastle, T. Schmid, Dosimetric evaluation of mobile communications equipment with known precision, IEEE Transaction on Communications, vol. E80-B, no. 5, May 1997, pp. 645-652.
- [9] Std. C95.3-1991, "IEEE Recommended Practice for the Measurement of Potentially Hazardous Electromagnetic Fields – RF and Microwave, New York: IEEE, Aug. 1992.
- [10] CENELEC CLC/SC111B, European Prestandard (prENV 50166-2), Human Exposure to Electromagnetic Fields High-frequency: 10KHz-300GHz, Jan. 1995.
- [11] IEEE Std 1528™-2003 - IEEE Recommended Practice for Determining the Peak Spatial-Average Specific Absorption Rate (SAR) in the Human Head From Wireless Communications Devices: Measurement Techniques
- [12] IEEE Std 1528a™-2005 (Amendment to IEEE Std 1528™-2003), IEEE Recommended Practice for Determining the Peak Spatial-Average Specific Absorption Rate (SAR) in the Human Head from Wireless Communications Devices: Measurement Techniques
- [13] KDB248227 D01 SAR meas for 802 11 a b g v01r02.
- [14] KDB 648474 D01 SAR Handsets Multi Xmitter and Ant v01r05



## Appendix A - System Performance Check

Test Laboratory: A Test Lab Techno Corp.

Date/Time: 11/19/2012 10:02:02 PM

### System Performance Check at 2450MHz\_20121119\_Body

DUT: Dipole 2450 MHz; Type: D2450V2; Serial: D2450V2 - SN:712

Communication System: CW; Frequency: 2450 MHz; Duty Cycle: 1:1

Medium parameters used:  $f = 2450$  MHz;  $\sigma = 1.962$  mho/m;  $\epsilon_r = 51.91$ ;  $\rho = 1000$  kg/m<sup>3</sup>

Phantom section: Flat Section

Measurement Standard: DASYS5 (IEEE/IEC)

DASY5 Configuration:

- Area Scan setting - Find Secondary Maximum Within: 2.0dB and with a peak SAR value greater than 0.5 W/Kg
- Probe: EX3DV4 - SN3820; ConvF(7.34, 7.34, 7.34); Calibrated: 12/16/2011
- Sensor-Surface: 3mm (Mechanical Surface Detection)
- Electronics: DAE4 Sn779; Calibrated: 1/23/2012
- Phantom: ELI v5.0; Type: QDOVA002AA; Serial: TP:1133
- Measurement SW: DASYS5, V5.0 Build 125; SEMCAD X Version 13.4 Build 125

### System Performance Check at 2450MHz/Area Scan (61x61x1):

Measurement grid: dx=15mm, dy=15mm

Maximum value of SAR (interpolated) = 16.8 mW/g

### System Performance Check at 2450MHz/Zoom Scan (7x7x7)/Cube 0:

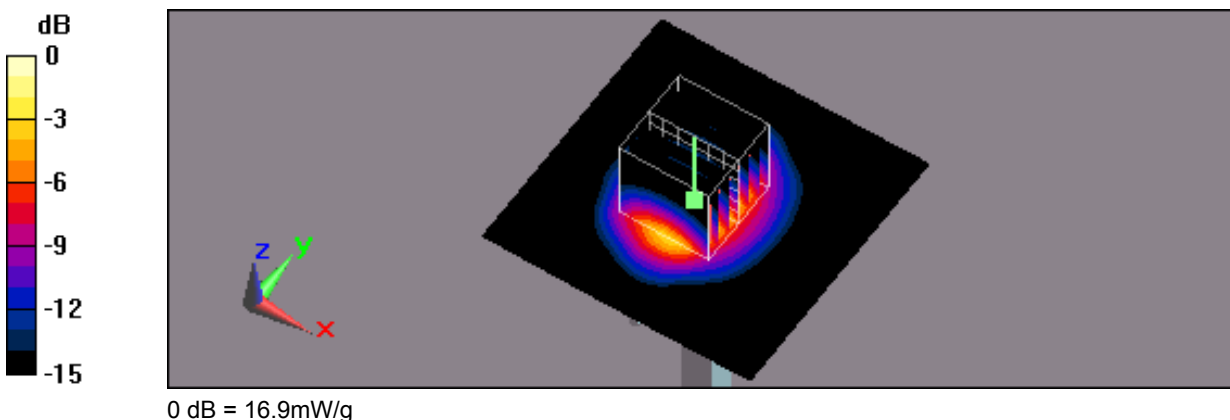
Measurement grid: dx=5mm, dy=5mm, dz=5mm

Reference Value = 90.9 V/m; Power Drift = 0.047 dB

Peak SAR (extrapolated) = 27 W/kg

**SAR(1 g) = 12.80 mW/g; SAR(10 g) = 5.90 mW/g**

Maximum value of SAR (measured) = 16.9 mW/g





## Appendix B - SAR Measurement Data

Test Laboratory: A Test Lab Techno Corp.

Date/Time: 11/20/2012 6:08:12 PM

**#1\_Flat\_802.11b CH6\_1M\_Back surface to phantom 0mm\_Alkaline battery**

**DUT: InnoTab 2S; Type: Tablet; Serial: N/A**

Communication System: IEEE 802.11b; Frequency: 2437 MHz; Duty Cycle: 1:1

Medium parameters used:  $f = 2437$  MHz;  $\sigma = 1.93$  mho/m;  $\epsilon_r = 51.8$ ;  $\rho = 1000$  kg/m<sup>3</sup>

Phantom section: Flat Section

Measurement Standard: DASYS5 (IEEE/IEC)

DASY5 Configuration:

- Area Scan setting - Find Secondary Maximum Within: 2.0dB and with a peak SAR value greater than 0.5 W/Kg
- Probe: EX3DV4 - SN3820; ConvF(7.34, 7.34, 7.34); Calibrated: 12/16/2011
- Sensor-Surface: 3mm (Mechanical Surface Detection)
- Electronics: DAE4 Sn779; Calibrated: 1/23/2012
- Phantom: ELI v5.0; Type: QDOVA002AA; Serial: TP:1133
- Measurement SW: DASYS5, V5.0 Build 125; SEMCAD X Version 13.4 Build 125

### Flat/Area Scan (81x141x1):

Measurement grid: dx=15mm, dy=15mm

Maximum value of SAR (interpolated) = 0.227 mW/g

### Flat/Zoom Scan (7x7x9)/Cube 0:

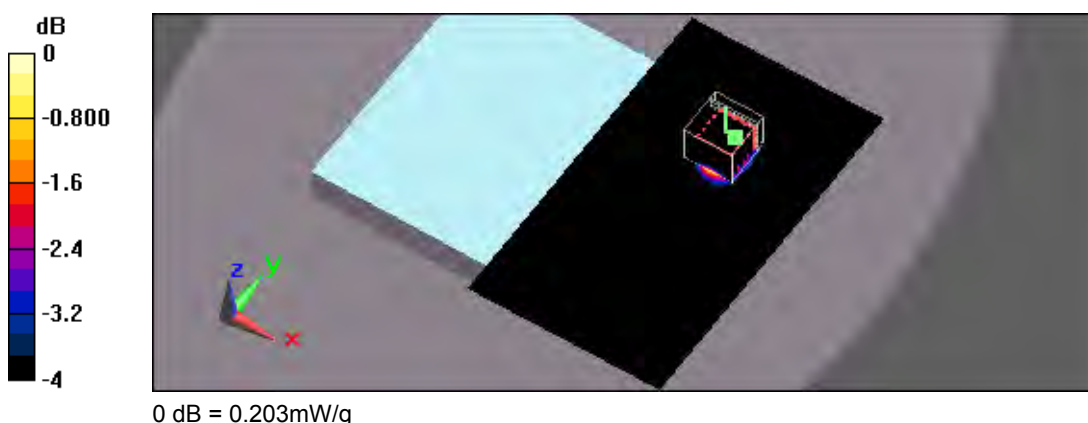
Measurement grid: dx=5mm, dy=5mm, dz=3mm

Reference Value = 0.851 V/m; Power Drift = -0.104 dB

Peak SAR (extrapolated) = 0.345 W/kg

**SAR(1 g) = 0.154 mW/g; SAR(10 g) = 0.07200 mW/g**

Maximum value of SAR (measured) = 0.203 mW/g





Test Laboratory: A Test Lab Techno Corp.

Date/Time: 11/20/2012 7:30:32 PM

**#2\_Flat\_802.11b CH6\_1M\_Edge Top to phantom 0mm\_Alkaline battery**

**DUT: InnoTab 2S; Type: Tablet; Serial: N/A**

Communication System: IEEE 802.11b; Frequency: 2437 MHz; Duty Cycle: 1:1

Medium parameters used:  $f = 2437$  MHz;  $\sigma = 1.93$  mho/m;  $\epsilon_r = 51.8$ ;  $\rho = 1000$  kg/m<sup>3</sup>

Phantom section: Flat Section

Measurement Standard: DASYS5 (IEEE/IEC)

DASY5 Configuration:

- Area Scan setting - Find Secondary Maximum Within: 2.0dB and with a peak SAR value greater than 0.5 W/Kg
- Probe: EX3DV4 - SN3820; ConvF(7.34, 7.34, 7.34); Calibrated: 12/16/2011
- Sensor-Surface: 3mm (Mechanical Surface Detection)
- Electronics: DAE4 Sn779; Calibrated: 1/23/2012
- Phantom: ELI v5.0; Type: QDOVA002AA; Serial: TP:1133
- Measurement SW: DASYS5, V5.0 Build 125; SEMCAD X Version 13.4 Build 125

**Flat/Area Scan (51x141x1):**

Measurement grid: dx=15mm, dy=15mm

Maximum value of SAR (interpolated) = 0.128 mW/g

**Flat/Zoom Scan (7x7x9)/Cube 0:**

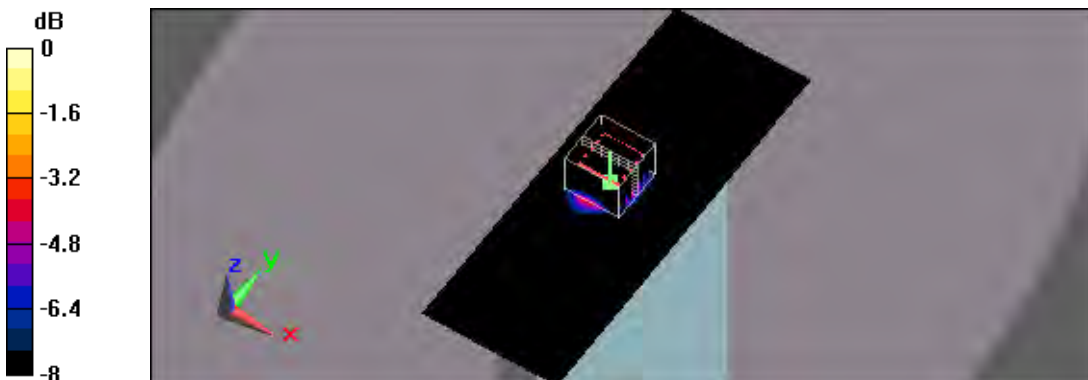
Measurement grid: dx=5mm, dy=5mm, dz=3mm

Reference Value = 6.930 V/m; Power Drift = -0.110 dB

Peak SAR (extrapolated) = 0.205 W/kg

**SAR(1 g) = 0.090 mW/g; SAR(10 g) = 0.03900 mW/g**

Maximum value of SAR (measured) = 0.119 mW/g



0 dB = 0.119mW/g





Test Laboratory: A Test Lab Techno Corp.

Date/Time: 11/20/2012 5:29:53 PM

**#3\_Flat\_802.11b CH6\_1M\_Edge Right to phantom 0mm\_Alkaline battery**

**DUT: InnoTab 2S; Type: Tablet; Serial: N/A**

Communication System: IEEE 802.11b; Frequency: 2437 MHz; Duty Cycle: 1:1

Medium parameters used:  $f = 2437$  MHz;  $\sigma = 1.93$  mho/m;  $\epsilon_r = 51.8$ ;  $\rho = 1000$  kg/m<sup>3</sup>

Phantom section: Flat Section

Measurement Standard: DASYS5 (IEEE/IEC)

DASY5 Configuration:

- Area Scan setting - Find Secondary Maximum Within: 2.0dB and with a peak SAR value greater than 0.5 W/Kg
- Probe: EX3DV4 - SN3820; ConvF(7.34, 7.34, 7.34); Calibrated: 12/16/2011
- Sensor-Surface: 3mm (Mechanical Surface Detection)
- Electronics: DAE4 Sn779; Calibrated: 1/23/2012
- Phantom: ELI v5.0; Type: QDOVA002AA; Serial: TP:1133
- Measurement SW: DASYS5, V5.0 Build 125; SEMCAD X Version 13.4 Build 125

**Flat/Area Scan (51x161x1):**

Measurement grid: dx=15mm, dy=15mm

Maximum value of SAR (interpolated) = 0.019 mW/g

**Flat/Zoom Scan (7x7x9)/Cube 0:**

Measurement grid: dx=5mm, dy=5mm, dz=3mm

Reference Value = 2.150 V/m; Power Drift = -0.101 dB

Peak SAR (extrapolated) = 0.044 W/kg

**SAR(1 g) = 0.012 mW/g; SAR(10 g) = 0.00454 mW/g**

Maximum value of SAR (measured) = 0.018 mW/g



Test Laboratory: A Test Lab Techno Corp.

Date/Time: 11/20/2012 3:08:02 PM

**#4 Flat\_802.11g CH6\_ 6M\_Back surface to phantom 0mm\_Alkaline battery**

**DUT: InnoTab 2S; Type: Tablet; Serial: N/A**

Communication System: IEEE 802.11g; Frequency: 2437 MHz; Duty Cycle: 1:1  
 Medium parameters used:  $f = 2437 \text{ MHz}$ ;  $\sigma = 1.93 \text{ mho/m}$ ;  $\epsilon_r = 51.8$ ;  $\rho = 1000 \text{ kg/m}^3$   
 Phantom section: Flat Section  
 Measurement Standard: DASYS5 (IEEE/IEC)

DASY5 Configuration:

- Area Scan setting - Find Secondary Maximum Within: 2.0dB and with a peak SAR value greater than 0.5 W/Kg
- Probe: EX3DV4 - SN3820; ConvF(7.34, 7.34, 7.34); Calibrated: 12/16/2011
- Sensor-Surface: 3mm (Mechanical Surface Detection)
- Electronics: DAE4 Sn779; Calibrated: 1/23/2012
- Phantom: ELI v5.0; Type: QDOVA002AA; Serial: TP:1133
- Measurement SW: DASYS5, V5.0 Build 125; SEMCAD X Version 13.4 Build 125

**Flat/Area Scan (81x141x1):**

Measurement grid:  $dx=15\text{mm}$ ,  $dy=15\text{mm}$

Maximum value of SAR (interpolated) = 0.309 mW/g

**Flat/Zoom Scan (7x7x9)/Cube 0:**

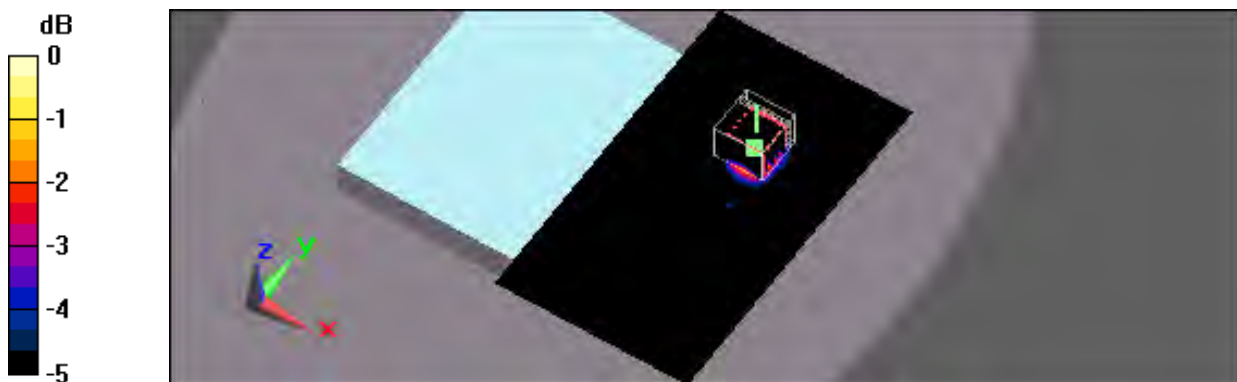
Measurement grid:  $dx=5\text{mm}$ ,  $dy=5\text{mm}$ ,  $dz=3\text{mm}$

Reference Value = 1.080 V/m; Power Drift = -0.153 dB

Peak SAR (extrapolated) = 0.436 W/kg

**SAR(1 g) = 0.197 mW/g; SAR(10 g) = 0.09500 mW/g**

Maximum value of SAR (measured) = 0.265 mW/g



0 dB = 0.265mW/g

Test Laboratory: A Test Lab Techno Corp.

Date/Time: 11/20/2012 3:43:47 PM

**#5\_Flat\_802.11g\_CH6\_6M\_Edge Top to phantom 0mm\_Alkaline battery**

**DUT: InnoTab 2S; Type: Tablet; Serial: N/A**

Communication System: IEEE 802.11g; Frequency: 2437 MHz; Duty Cycle: 1:1

Medium parameters used:  $f = 2437 \text{ MHz}$ ;  $\sigma = 1.93 \text{ mho/m}$ ;  $\epsilon_r = 51.8$ ;  $\rho = 1000 \text{ kg/m}^3$

Phantom section: Flat Section

Measurement Standard: DASYS5 (IEEE/IEC)

DASY5 Configuration:

- Area Scan setting - Find Secondary Maximum Within: 2.0dB and with a peak SAR value greater than 0.5 W/Kg
- Probe: EX3DV4 - SN3820; ConvF(7.34, 7.34, 7.34); Calibrated: 12/16/2011
- Sensor-Surface: 3mm (Mechanical Surface Detection)
- Electronics: DAE4 Sn779; Calibrated: 1/23/2012
- Phantom: ELI v5.0; Type: QDOVA002AA; Serial: TP:1133
- Measurement SW: DASYS5, V5.0 Build 125; SEMCAD X Version 13.4 Build 125

**Flat/Area Scan (51x141x1):**

Measurement grid:  $dx=15\text{mm}$ ,  $dy=15\text{mm}$

Maximum value of SAR (interpolated) = 0.157 mW/g

**Flat/Zoom Scan (7x7x9)/Cube 0:**

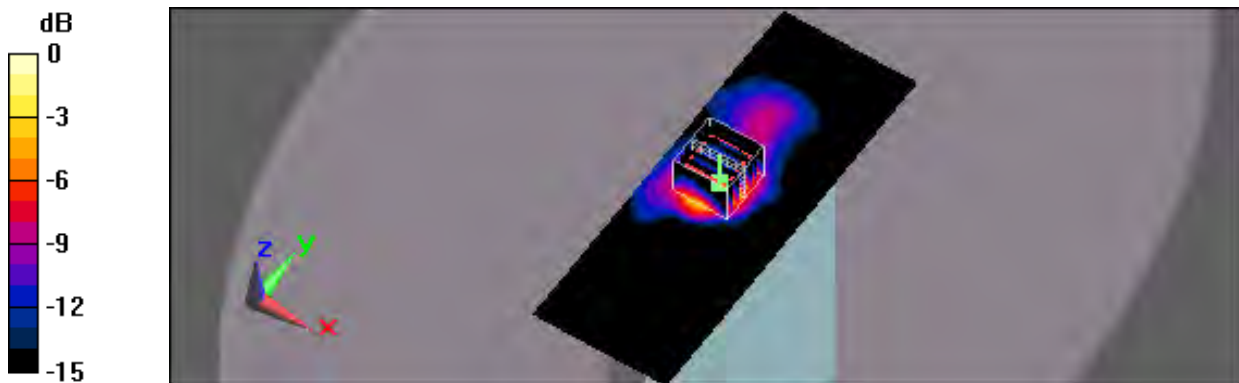
Measurement grid:  $dx=5\text{mm}$ ,  $dy=5\text{mm}$ ,  $dz=3\text{mm}$

Reference Value = 7.470 V/m; Power Drift = 0.099 dB

Peak SAR (extrapolated) = 0.263 W/kg

**SAR(1 g) = 0.118 mW/g; SAR(10 g) = 0.05200 mW/g**

Maximum value of SAR (measured) = 0.157 mW/g



0 dB = 0.157mW/g



Test Laboratory: A Test Lab Techno Corp.

Date/Time: 11/20/2012 5:00:03 PM

**#6\_Flat\_802.11g\_CH6\_6M\_Edge Right to phantom 0mm\_Alkaline battery**

**DUT: InnoTab 2S; Type: Tablet; Serial: N/A**

Communication System: IEEE 802.11g; Frequency: 2437 MHz; Duty Cycle: 1:1

Medium parameters used:  $f = 2437$  MHz;  $\sigma = 1.93$  mho/m;  $\epsilon_r = 51.8$ ;  $\rho = 1000$  kg/m<sup>3</sup>

Phantom section: Flat Section

Measurement Standard: DASYS5 (IEEE/IEC)

DASY5 Configuration:

- Area Scan setting - Find Secondary Maximum Within: 2.0dB and with a peak SAR value greater than 0.5 W/Kg
- Probe: EX3DV4 - SN3820; ConvF(7.34, 7.34, 7.34); Calibrated: 12/16/2011
- Sensor-Surface: 3mm (Mechanical Surface Detection)
- Electronics: DAE4 Sn779; Calibrated: 1/23/2012
- Phantom: ELI v5.0; Type: QDOVA002AA; Serial: TP:1133
- Measurement SW: DASYS5, V5.0 Build 125; SEMCAD X Version 13.4 Build 125

**Flat/Area Scan (51x161x1):**

Measurement grid: dx=15mm, dy=15mm

Maximum value of SAR (interpolated) = 0.023 mW/g

**Flat/Zoom Scan (7x7x9)/Cube 0:**

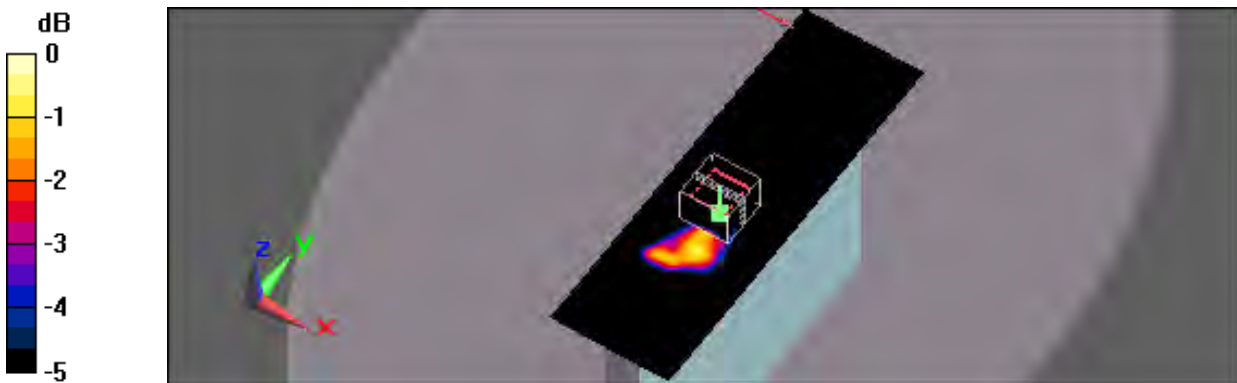
Measurement grid: dx=5mm, dy=5mm, dz=3mm

Reference Value = 2.790 V/m; Power Drift = -0.106 dB

Peak SAR (extrapolated) = 0.057 W/kg

**SAR(1 g) = 0.016 mW/g; SAR(10 g) = 0.00591 mW/g**

Maximum value of SAR (measured) = 0.022 mW/g



0 dB = 0.022mW/g



## ***Appendix C - Calibration***

All of the instruments Calibration information are listed below.

- Dipole \_ D2450V2 SN:712 Calibration No.D2450V2-712\_Feb12
- Probe \_ EX3DV4 SN:3820 Calibration No.EX3-3820\_Dec11
- DAE \_ DAE4 SN:779 Calibration No.DAE4-779\_Jan12

**Calibration Laboratory of  
Schmid & Partner  
Engineering AG**  
Zeughausstrasse 43, 8004 Zurich, Switzerland



**S** Schweizerischer Kalibrierdienst  
**C** Service suisse d'étalonnage  
**S** Servizio svizzero di taratura  
**S** Swiss Calibration Service

Accredited by the Swiss Accreditation Service (SAS)  
The Swiss Accreditation Service is one of the signatories to the EA  
Multilateral Agreement for the recognition of calibration certificates

Accreditation No.: **SCS 108**

Client **ATL (Auden)**

Certificate No: **D2450V2-712\_Feb12**

## CALIBRATION CERTIFICATE

Object: **D2450V2 - SN: 712**

Calibration procedure(s): **QA CAL-05.v8  
Calibration procedure for dipole validation kits above 700 MHz**



Calibration date: **February 23, 2012**

This calibration certificate documents the traceability to national standards, which realize the physical units of measurements (SI).  
The measurements and the uncertainties with confidence probability are given on the following pages and are part of the certificate.

All calibrations have been conducted in the closed laboratory facility: environment temperature (22 ± 3)°C and humidity < 70%.

Calibration Equipment used (M&TE critical for calibration)

| Primary Standards           | ID #               | Cal Date (Certificate No.)        | Scheduled Calibration  |
|-----------------------------|--------------------|-----------------------------------|------------------------|
| Power meter EPM-442A        | GB37480704         | 05-Oct-11 (No. 217-01451)         | Oct-12                 |
| Power sensor HP 8481A       | US37292783         | 05-Oct-11 (No. 217-01451)         | Oct-12                 |
| Reference 20 dB Attenuator  | SN: 5086 (20g)     | 29-Mar-11 (No. 217-01368)         | Apr-12                 |
| Type-N mismatch combination | SN: 5047.2 / 06327 | 29-Mar-11 (No. 217-01371)         | Apr-12                 |
| Reference Probe ES3DV3      | SN: 3205           | 30-Dec-11 (No. ES3-3205_Dec11)    | Dec-12                 |
| DAE4                        | SN: 601            | 04-Jul-11 (No. DAE4-601_Jul11)    | Jul-12                 |
| Secondary Standards         | ID #               | Check Date (in house)             | Scheduled Check        |
| Power sensor HP 8481A       | MY41092317         | 18-Oct-02 (in house check Oct-11) | In house check: Oct-13 |
| RF generator R&S SMT-06     | 100005             | 04-Aug-99 (in house check Oct-11) | In house check: Oct-13 |
| Network Analyzer HP 8753E   | US37390585 S4206   | 18-Oct-01 (in house check Oct-11) | In house check: Oct-12 |

|                |                |                       |   |
|----------------|----------------|-----------------------|---|
|                | Name           | Function              | Signature   |
| Calibrated by: | Israe El-Naouq | Laboratory Technician |  |
| Approved by:   | Katja Pokovic  | Technical Manager     |  |

Issued: February 23, 2012

This calibration certificate shall not be reproduced except in full without written approval of the laboratory.

**Calibration Laboratory of  
Schmid & Partner  
Engineering AG**  
Zeughausstrasse 43, 8004 Zurich, Switzerland



**S** Schweizerischer Kalibrierdienst  
**S** Service suisse d'étalonnage  
**C** Servizio svizzero di taratura  
**S** Swiss Calibration Service

Accredited by the Swiss Accreditation Service (SAS)  
The Swiss Accreditation Service is one of the signatories to the EA  
Multilateral Agreement for the recognition of calibration certificates

Accreditation No.: **SCS 108**

**Glossary:**

|       |                                 |
|-------|---------------------------------|
| TSL   | tissue simulating liquid        |
| ConvF | sensitivity in TSL / NORM x,y,z |
| N/A   | not applicable or not measured  |

**Calibration is Performed According to the Following Standards:**

- a) IEEE Std 1528-2003, "IEEE Recommended Practice for Determining the Peak Spatial-Averaged Specific Absorption Rate (SAR) in the Human Head from Wireless Communications Devices: Measurement Techniques", December 2003
- b) IEC 62209-1, "Procedure to measure the Specific Absorption Rate (SAR) for hand-held devices used in close proximity to the ear (frequency range of 300 MHz to 3 GHz)", February 2005
- c) Federal Communications Commission Office of Engineering & Technology (FCC OET), "Evaluating Compliance with FCC Guidelines for Human Exposure to Radiofrequency Electromagnetic Fields; Additional Information for Evaluating Compliance of Mobile and Portable Devices with FCC Limits for Human Exposure to Radiofrequency Emissions", Supplement C (Edition 01-01) to Bulletin 65

**Additional Documentation:**

- d) DASY4/5 System Handbook

**Methods Applied and Interpretation of Parameters:**

- *Measurement Conditions:* Further details are available from the Validation Report at the end of the certificate. All figures stated in the certificate are valid at the frequency indicated.
- *Antenna Parameters with TSL:* The dipole is mounted with the spacer to position its feed point exactly below the center marking of the flat phantom section, with the arms oriented parallel to the body axis.
- *Feed Point Impedance and Return Loss:* These parameters are measured with the dipole positioned under the liquid filled phantom. The impedance stated is transformed from the measurement at the SMA connector to the feed point. The Return Loss ensures low reflected power. No uncertainty required.
- *Electrical Delay:* One-way delay between the SMA connector and the antenna feed point. No uncertainty required.
- *SAR measured:* SAR measured at the stated antenna input power.
- *SAR normalized:* SAR as measured, normalized to an input power of 1 W at the antenna connector.
- *SAR for nominal TSL parameters:* The measured TSL parameters are used to calculate the nominal SAR result.



### Measurement Conditions

DASY system configuration, as far as not given on page 1.

|                              |                        |             |
|------------------------------|------------------------|-------------|
| DASY Version                 | DASY5                  | V52.8.0     |
| Extrapolation                | Advanced Extrapolation |             |
| Phantom                      | Modular Flat Phantom   |             |
| Distance Dipole Center - TSL | 10 mm                  | with Spacer |
| Zoom Scan Resolution         | dx, dy, dz = 5 mm      |             |
| Frequency                    | 2450 MHz ± 1 MHz       |             |

### Head TSL parameters

The following parameters and calculations were applied.

|   | Temperature     | Permittivity | Conductivity     |
|---|-----------------|--------------|------------------|
| Nominal Head TSL parameters             | 22.0 °C         | 39.2         | 1.80 mho/m       |
| Measured Head TSL parameters            | (22.0 ± 0.2) °C | 38.9 ± 6 %   | 1.86 mho/m ± 6 % |
| Head TSL temperature change during test | < 0.5 °C        | ----         | ----             |

### SAR result with Head TSL

| SAR averaged over 1 cm <sup>3</sup> (1 g) of Head TSL | Condition          |                            |
|---|--------------------|----------------------------|
| SAR measured  | 250 mW input power | 13.6 mW / g                |
| SAR for nominal Head TSL parameters                   | normalized to 1W   | 53.5 mW / g ± 17.0 % (k=2) |

| SAR averaged over 10 cm <sup>3</sup> (10 g) of Head TSL | condition          |                            |
|---|--------------------|----------------------------|
| SAR measured  | 250 mW input power | 6.26 mW / g                |
| SAR for nominal Head TSL parameters                     | normalized to 1W   | 24.8 mW / g ± 16.5 % (k=2) |

### Body TSL parameters

The following parameters and calculations were applied.

|   | Temperature     | Permittivity | Conductivity     |
|---|-----------------|--------------|------------------|
| Nominal Body TSL parameters             | 22.0 °C         | 52.7         | 1.95 mho/m       |
| Measured Body TSL parameters            | (22.0 ± 0.2) °C | 52.3 ± 6 %   | 2.02 mho/m ± 6 % |
| Body TSL temperature change during test | < 0.5 °C        | ----         | ----             |

### SAR result with Body TSL

| SAR averaged over 1 cm <sup>3</sup> (1 g) of Body TSL | Condition          |                            |
|---|--------------------|----------------------------|
| SAR measured  | 250 mW input power | 12.7 mW / g                |
| SAR for nominal Body TSL parameters                   | normalized to 1W   | 49.9 mW / g ± 17.0 % (k=2) |

| SAR averaged over 10 cm <sup>3</sup> (10 g) of Body TSL | condition          |                            |
|---|--------------------|----------------------------|
| SAR measured  | 250 mW input power | 5.95 mW / g                |
| SAR for nominal Body TSL parameters                     | normalized to 1W   | 23.6 mW / g ± 16.5 % (k=2) |





## Appendix

### Antenna Parameters with Head TSL

|                                      |                                |
|--------------------------------------|--------------------------------|
| Impedance, transformed to feed point | 55.0 $\Omega$ + 2.5 j $\Omega$ |
| Return Loss                          | - 25.5 dB                      |

### Antenna Parameters with Body TSL

|                                      |                                |
|--------------------------------------|--------------------------------|
| Impedance, transformed to feed point | 51.7 $\Omega$ + 4.9 j $\Omega$ |
| Return Loss                          | - 25.8 dB                      |

### General Antenna Parameters and Design

|                                  |          |
|----------------------------------|----------|
| Electrical Delay (one direction) | 1,144 ns |
|----------------------------------|----------|

After long term use with 100W radiated power, only a slight warming of the dipole near the feedpoint can be measured.

The dipole is made of standard semirigid coaxial cable. The center conductor of the feeding line is directly connected to the second arm of the dipole. The antenna is therefore short-circuited for DC-signals. On some of the dipoles, small end caps are added to the dipole arms in order to improve matching when loaded according to the position as explained in the "Measurement Conditions" paragraph. The SAR data are not affected by this change. The overall dipole length is still according to the Standard.

No excessive force must be applied to the dipole arms, because they might bend or the soldered connections near the feedpoint may be damaged.

### Additional EUT Data

|                 |               |
|-----------------|---------------|
| Manufactured by | SPEAG         |
| Manufactured on | July 05, 2002 |

## DASY5 Validation Report for Head TSL

Date: 23.02.2012

Test Laboratory: SPEAG, Zurich, Switzerland

**DUT: Dipole 2450 MHz; Type: D2450V2; Serial: D2450V2 - SN: 712**

Communication System: CW; Frequency: 2450 MHz

Medium parameters used:  $f = 2450$  MHz;  $\sigma = 1.86$  mho/m;  $\epsilon_r = 38.9$ ;  $\rho = 1000$  kg/m<sup>3</sup>

Phantom section: Flat Section

Measurement Standard: DASY5 (IEEE/IEC/ANSI C63.19-2007)

DASY52 Configuration:

- Probe: ES3DV3 - SN3205; ConvF(4.45, 4.45, 4.45); Calibrated: 30.12.2011
- Sensor-Surface: 3mm (Mechanical Surface Detection)
- Electronics: DAE4 Sn601; Calibrated: 04.07.2011
- Phantom: Flat Phantom 5.0 (front); Type: QD000P50AA; Serial: 1001
- DASY52 52.8.0(692); SEMCAD X 14.6.4(4989)

### Dipole Calibration for Head Tissue/Pin=250 mW, d=10mm/Zoom Scan (7x7x7)/Cube 0:

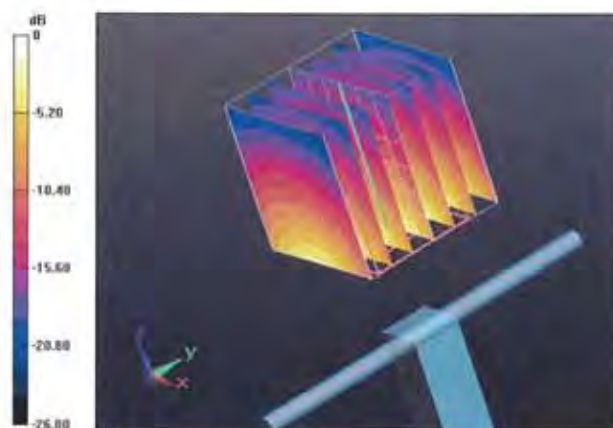
Measurement grid: dx=5mm, dy=5mm, dz=5mm

Reference Value = 100.1 V/m; Power Drift = 0.06 dB

Peak SAR (extrapolated) = 28.3820

**SAR(1 g) = 13.6 mW/g; SAR(10 g) = 6.26 mW/g**

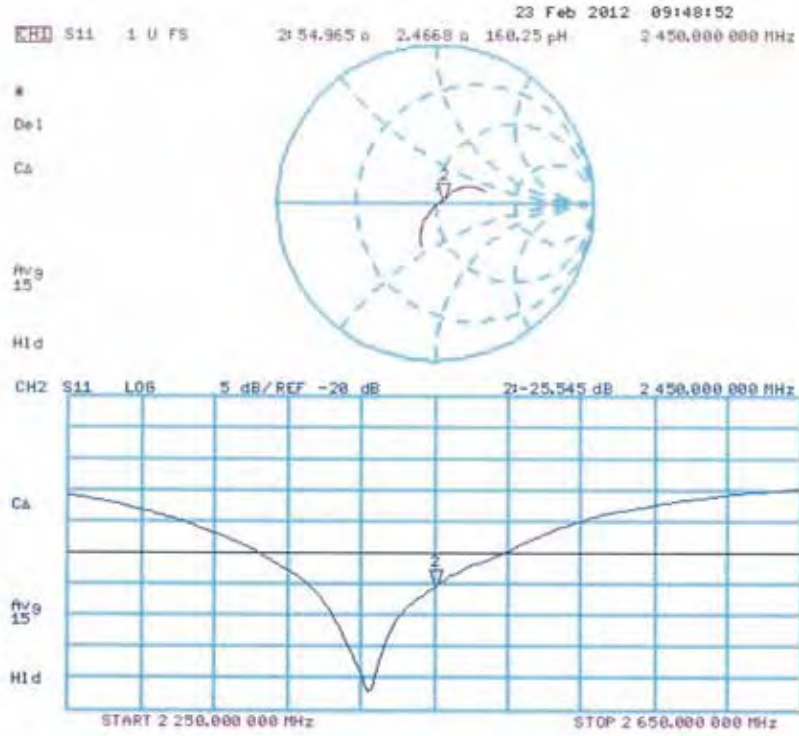
Maximum value of SAR (measured) = 17.534 mW/g



0 dB = 17.530mW/g = 24.88 dB mW/g



### Impedance Measurement Plot for Head TSL



## DASY5 Validation Report for Body TSL

Date: 23.02.2012

Test Laboratory: SPEAG, Zurich, Switzerland

**DUT: Dipole 2450 MHz; Type: D2450V2; Serial: D2450V2 - SN: 712**

Communication System: CW; Frequency: 2450 MHz

Medium parameters used:  $f = 2450$  MHz;  $\sigma = 2.02$  mho/m;  $\epsilon_r = 52.3$ ;  $\rho = 1000$  kg/m<sup>3</sup>

Phantom section: Flat Section

Measurement Standard: DASY5 (IEEE/IEC/ANSI C63.19-2007)

DASY52 Configuration:

- Probe: ES3DV3 - SN3205; ConvF(4.26, 4.26, 4.26); Calibrated: 30.12.2011
- Sensor-Surface: 3mm (Mechanical Surface Detection)
- Electronics: DAE4 Sn601; Calibrated: 04.07.2011
- Phantom: Flat Phantom 5.0 (back); Type: QD000P50AA; Serial: 1002
- DASY52 52.8.0(692); SEMCAD X 14.6.4(4989)

### Dipole Calibration for Body Tissue/Pin=250 mW, d=10mm/Zoom Scan (7x7x7)/Cube 0:

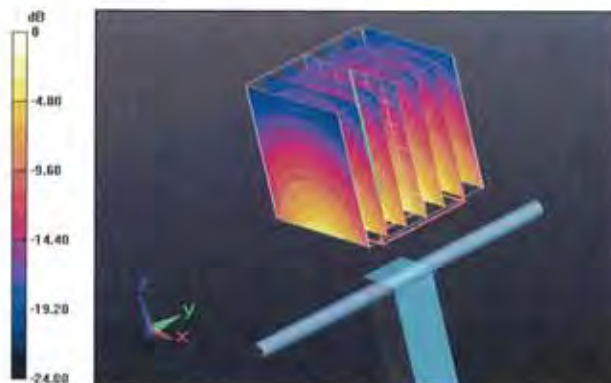
Measurement grid: dx=5mm, dy=5mm, dz=5mm

Reference Value = 94.094 V/m; Power Drift = 0.0032 dB

Peak SAR (extrapolated) = 26.0450

**SAR(1 g) = 12.7 mW/g; SAR(10 g) = 5.95 mW/g**

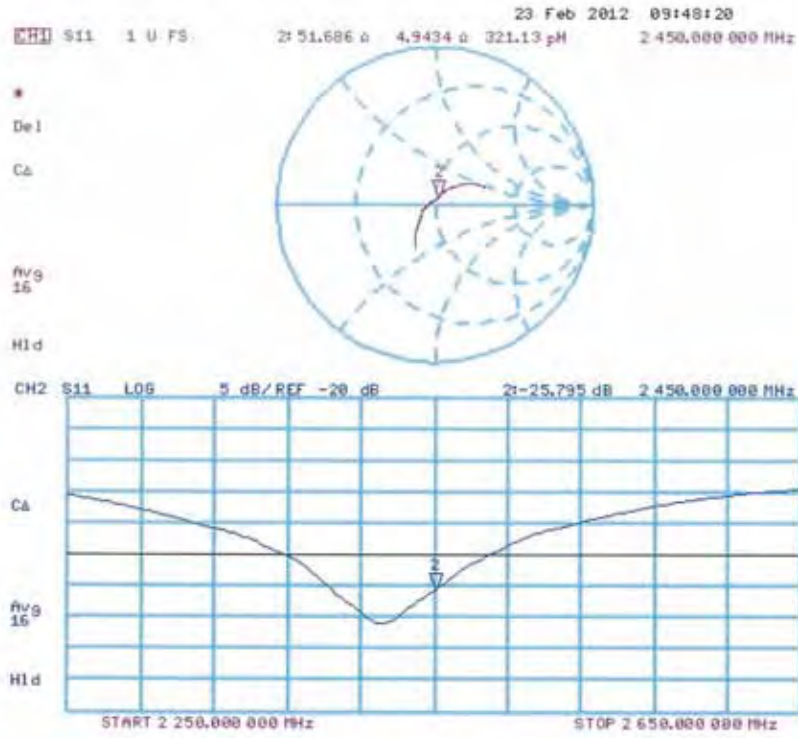
Maximum value of SAR (measured) = 16.700 mW/g



0 dB = 16.700mW/g = 24.45 dB mW/g



### Impedance Measurement Plot for Body TSL



**Calibration Laboratory of  
Schmid & Partner  
Engineering AG**  
Zeughausstrasse 43, 8004 Zurich, Switzerland



**S** Schweizerischer Kalibrierdienst  
**S** Service suisse d'étalonnage  
**S** Servizio svizzero di taratura  
**S** Swiss Calibration Service

Accredited by the Swiss Accreditation Service (SAS)  
The Swiss Accreditation Service is one of the signatories to the EA  
Multilateral Agreement for the recognition of calibration certificates

Accreditation No.: **SCS 108**

Client **Auden**

Certificate No: **EX3-3820\_Dec11**

## CALIBRATION CERTIFICATE

Object **EX3DV4 - SN:3820**

Calibration procedure(s) **QA CAL-01.v8, QA CAL-14.v3, QA CAL-23.v4, QA CAL-25.v4  
Calibration procedure for dosimetric E-field probes**

Calibration date: **December 16, 2011**

This calibration certificate documents the traceability to national standards, which realize the physical units of measurements (SI).  
The measurements and the uncertainties with confidence probability are given on the following pages and are part of the certificate.

All calibrations have been conducted in the closed laboratory facility; environment temperature (22 ± 3)°C and humidity < 70%.

Calibration Equipment used (M&TE critical for calibration)

| Primary Standards          | ID              | Cal Date (Certificate No.)        | Scheduled Calibration  |
|----------------------------|-----------------|-----------------------------------|------------------------|
| Power meter E4419B         | GB41293874      | 31-Mar-11 (No. 217-01372)         | Apr-12                 |
| Power sensor E4412A        | MY41498087      | 31-Mar-11 (No. 217-01372)         | Apr-12                 |
| Reference 3 dB Attenuator  | SN: S5054 (3c)  | 29-Mar-11 (No. 217-01369)         | Apr-12                 |
| Reference 20 dB Attenuator | SN: S5086 (20b) | 29-Mar-11 (No. 217-01367)         | Apr-12                 |
| Reference 30 dB Attenuator | SN: S5129 (30b) | 29-Mar-11 (No. 217-01370)         | Apr-12                 |
| Reference Probe ES3DV2     | SN: 3013        | 29-Dec-10 (No. ES3-3013, Dec10)   | Dec-11                 |
| DAE4                       | SN: 654         | 3-May-11 (No. DAE4-654_May11)     | May-12                 |
| Secondary Standards        | ID              | Check Date (in house)             | Scheduled Check        |
| RF generator HP 8648C      | US3642U01700    | 4-Aug-99 (in house check Apr-11)  | In house check: Apr-13 |
| Network Analyzer HP 8753E  | US37390585      | 18-Oct-01 (in house check Oct-11) | In house check: Oct-12 |

|   | Name          | Function          | Signature  |
|---|---------------|-------------------|--|
| Calibrated by:  | Katja Pokovic | Technical Manager |  |
| Approved by:  | Niels Kuster  | Quality Manager   |  |
|   |               |                   | issued: December 16, 2011  |
| This calibration certificate shall not be reproduced except in full without written approval of the laboratory. |               |                   |  |

**Calibration Laboratory of  
Schmid & Partner  
Engineering AG**  
Zeughausstrasse 43, 8004 Zurich, Switzerland



**S** Schweizerischer Kalibrierdienst  
**C** Service suisse d'étalonnage  
**S** Servizio svizzero di taratura  
**S** Swiss Calibration Service

Accredited by the Swiss Accreditation Service (SAS)

Accreditation No.: **SCS 108**

The Swiss Accreditation Service is one of the signatories to the EA  
Multilateral Agreement for the recognition of calibration certificates

#### Glossary:

|                          |   |
|--------------------------|---|
| TSL                      | tissue simulating liquid  |
| NORM <sub>x,y,z</sub>    | sensitivity in free space   |
| ConvF                    | sensitivity in TSL / NORM <sub>x,y,z</sub>  |
| DCP                      | diode compression point   |
| CF                       | crest factor (1/duty_cycle) of the RF signal  |
| A, B, C                  | modulation dependent linearization parameters   |
| Polarization $\varphi$   | $\varphi$ rotation around probe axis  |
| Polarization $\vartheta$ | $\vartheta$ rotation around an axis that is in the plane normal to probe axis (at measurement center),<br>i.e., $\vartheta = 0$ is normal to probe axis |

#### Calibration is Performed According to the Following Standards:

- IEEE Std 1528-2003, "IEEE Recommended Practice for Determining the Peak Spatial-Averaged Specific Absorption Rate (SAR) in the Human Head from Wireless Communications Devices: Measurement Techniques", December 2003
- IEC 62209-1, "Procedure to measure the Specific Absorption Rate (SAR) for hand-held devices used in close proximity to the ear (frequency range of 300 MHz to 3 GHz)", February 2005

#### Methods Applied and Interpretation of Parameters:

- NORM<sub>x,y,z</sub>**: Assessed for E-field polarization  $\vartheta = 0$  ( $f \leq 900$  MHz in TEM-cell;  $f > 1800$  MHz: R22 waveguide). NORM<sub>x,y,z</sub> are only intermediate values, i.e., the uncertainties of NORM<sub>x,y,z</sub> does not affect the E<sup>2</sup>-field uncertainty inside TSL (see below ConvF).
- NORM( $f$ )<sub>x,y,z</sub> = NORM<sub>x,y,z</sub> \* frequency\_response** (see Frequency Response Chart). This linearization is implemented in DASY4 software versions later than 4.2. The uncertainty of the frequency response is included in the stated uncertainty of ConvF.
- DCP<sub>x,y,z</sub>**: DCP are numerical linearization parameters assessed based on the data of power sweep with CW signal (no uncertainty required). DCP does not depend on frequency nor media.
- PAR**: PAR is the Peak to Average Ratio that is not calibrated but determined based on the signal characteristics
- A<sub>x,y,z</sub>; B<sub>x,y,z</sub>; C<sub>x,y,z</sub>; VR<sub>x,y,z</sub>**: A, B, C are numerical linearization parameters assessed based on the data of power sweep for specific modulation signal. The parameters do not depend on frequency nor media. VR is the maximum calibration range expressed in RMS voltage across the diode.
- ConvF and Boundary Effect Parameters**: Assessed in flat phantom using E-field (or Temperature Transfer Standard for  $f \leq 800$  MHz) and inside waveguide using analytical field distributions based on power measurements for  $f > 800$  MHz. The same setups are used for assessment of the parameters applied for boundary compensation (alpha, depth) of which typical uncertainty values are given. These parameters are used in DASY4 software to improve probe accuracy close to the boundary. The sensitivity in TSL corresponds to NORM<sub>x,y,z</sub> \* ConvF whereby the uncertainty corresponds to that given for ConvF. A frequency dependent ConvF is used in DASY version 4.4 and higher which allows extending the validity from  $\pm 50$  MHz to  $\pm 100$  MHz.
- Spherical isotropy (3D deviation from isotropy)**: in a field of low gradients realized using a flat phantom exposed by a patch antenna.
- Sensor Offset**: The sensor offset corresponds to the offset of virtual measurement center from the probe tip (on probe axis). No tolerance required.



EX3DV4 – SN:3820

December 16, 2011

# Probe EX3DV4

## SN:3820

Manufactured: September 2, 2011  
Calibrated: December 16, 2011

Calibrated for DASY/EASY Systems  
(Note: non-compatible with DASY2 system!)





## DASY/EASY - Parameters of Probe: EX3DV4 - SN:3820

### Basic Calibration Parameters

|   | Sensor X | Sensor Y | Sensor Z | Unc (k=2)     |
|---|----------|----------|----------|---------------|
| Norm ( $\mu\text{V}/(\text{V}/\text{m})^2$ ) <sup>A</sup> | 0.44     | 0.34     | 0.44     | $\pm 10.1 \%$ |
| DCP (mV) <sup>B</sup>                                     | 100.1    | 102.1    | 98.5     |               |

### Modulation Calibration Parameters

| UID   | Communication System Name | PAR  |   | A<br>dB | B<br>dB | C<br>dB | VR<br>mV | Unc <sup>E</sup><br>(k=2) |
|-------|---------------------------|------|---|---------|---------|---------|----------|---------------------------|
| 10000 | CW                        | 0.00 | X | 0.00    | 0.00    | 1.00    | 104.9    | $\pm 2.5 \%$              |
|       |                           |      | Y | 0.00    | 0.00    | 1.00    | 125.4    |                           |
|       |                           |      | Z | 0.00    | 0.00    | 1.00    | 108.9    |                           |

The reported uncertainty of measurement is stated as the standard uncertainty of measurement multiplied by the coverage factor k=2, which for a normal distribution corresponds to a coverage probability of approximately 95%.

<sup>A</sup> The uncertainties of NormX,Y,Z do not affect the E<sup>2</sup>-field uncertainty inside TSL (see Pages 5 and 6).

<sup>B</sup> Numerical linearization parameter; uncertainty not required.

<sup>E</sup> Uncertainty is determined using the max. deviation from linear response applying rectangular distribution and is expressed for the square of the field value.

## DASY/EASY - Parameters of Probe: EX3DV4 - SN:3820

### Calibration Parameter Determined in Head Tissue Simulating Media

| f (MHz) <sup>c</sup> | Relative Permittivity <sup>f</sup> | Conductivity (S/m) <sup>f</sup> | ConvF X | ConvF Y | ConvF Z | Alpha | Depth (mm) | Unct. (k=2) |
|----------------------|------------------------------------|---------------------------------|---------|---------|---------|-------|------------|-------------|
| 835                  | 41.5                               | 0.90                            | 9.05    | 9.05    | 9.05    | 0.18  | 1.29       | ± 12.0 %    |
| 1750                 | 40.1                               | 1.37                            | 8.37    | 8.37    | 8.37    | 0.32  | 0.88       | ± 12.0 %    |
| 1900                 | 40.0                               | 1.40                            | 8.02    | 8.02    | 8.02    | 0.31  | 0.91       | ± 12.0 %    |
| 2100                 | 39.8                               | 1.49                            | 8.07    | 8.07    | 8.07    | 0.53  | 0.69       | ± 12.0 %    |
| 2450                 | 39.2                               | 1.80                            | 7.17    | 7.17    | 7.17    | 0.29  | 0.99       | ± 12.0 %    |
| 5200                 | 36.0                               | 4.66                            | 5.15    | 5.15    | 5.15    | 0.35  | 1.80       | ± 13.1 %    |
| 5300                 | 35.9                               | 4.76                            | 4.93    | 4.93    | 4.93    | 0.35  | 1.80       | ± 13.1 %    |
| 5500                 | 35.6                               | 4.96                            | 4.59    | 4.59    | 4.59    | 0.42  | 1.80       | ± 13.1 %    |
| 5600                 | 35.5                               | 5.07                            | 4.53    | 4.53    | 4.53    | 0.40  | 1.80       | ± 13.1 %    |
| 5800                 | 35.3                               | 5.27                            | 4.44    | 4.44    | 4.44    | 0.45  | 1.80       | ± 13.1 %    |

<sup>c</sup> Frequency validity of ± 100 MHz only applies for DASY v4.4 and higher (see Page 2), else it is restricted to ± 50 MHz. The uncertainty is the RSS of the ConvF uncertainty at calibration frequency and the uncertainty for the indicated frequency band.

<sup>f</sup> At frequencies below 3 GHz, the validity of tissue parameters ( $\epsilon$  and  $\sigma$ ) can be relaxed to ± 10% if liquid compensation formula is applied to measured SAR values. At frequencies above 3 GHz, the validity of tissue parameters ( $\epsilon$  and  $\sigma$ ) is restricted to ± 5%. The uncertainty is the RSS of the ConvF uncertainty for indicated target tissue parameters.

## DASY/EASY - Parameters of Probe: EX3DV4 - SN:3820

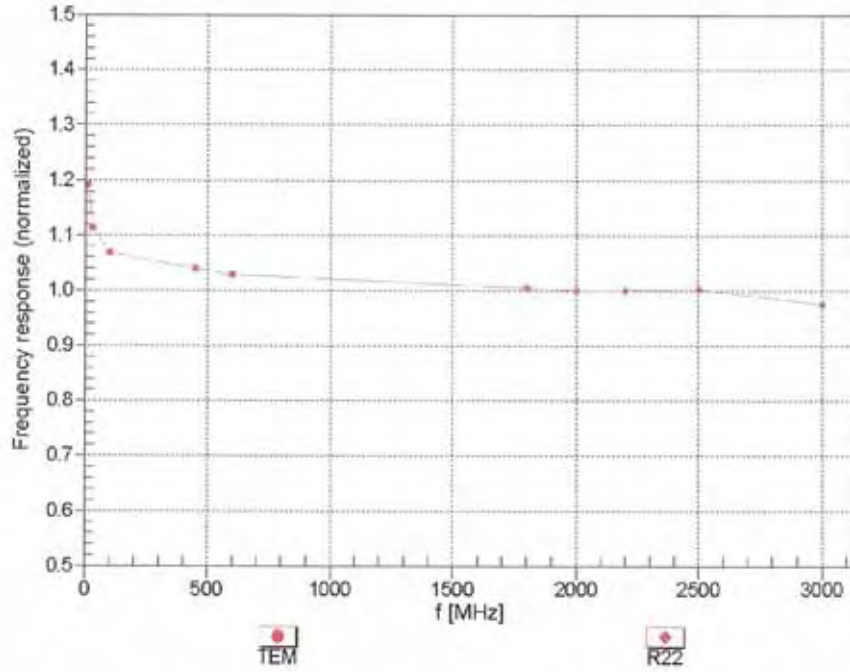
### Calibration Parameter Determined in Body Tissue Simulating Media

| f (MHz) <sup>c</sup> | Relative Permittivity <sup>f</sup> | Conductivity (S/m) <sup>f</sup> | ConvF X | ConvF Y | ConvF Z | Alpha | Depth (mm) | Unct. (k=2) |
|----------------------|------------------------------------|---------------------------------|---------|---------|---------|-------|------------|-------------|
| 835                  | 55.2                               | 0.97                            | 9.24    | 9.24    | 9.24    | 0.36  | 0.88       | ± 12.0 %    |
| 1750                 | 53.4                               | 1.49                            | 8.44    | 8.44    | 8.44    | 0.14  | 1.61       | ± 12.0 %    |
| 1900                 | 53.3                               | 1.52                            | 8.04    | 8.04    | 8.04    | 0.13  | 1.87       | ± 12.0 %    |
| 2100                 | 53.2                               | 1.62                            | 8.09    | 8.09    | 8.09    | 0.80  | 0.59       | ± 12.0 %    |
| 2450                 | 52.7                               | 1.95                            | 7.34    | 7.34    | 7.34    | 0.79  | 0.50       | ± 12.0 %    |
| 5200                 | 49.0                               | 5.30                            | 4.19    | 4.19    | 4.19    | 0.52  | 1.90       | ± 13.1 %    |
| 5300                 | 48.9                               | 5.42                            | 4.00    | 4.00    | 4.00    | 0.52  | 1.90       | ± 13.1 %    |
| 5500                 | 48.6                               | 5.65                            | 3.70    | 3.70    | 3.70    | 0.55  | 1.90       | ± 13.1 %    |
| 5600                 | 48.5                               | 5.77                            | 3.43    | 3.43    | 3.43    | 0.60  | 1.90       | ± 13.1 %    |
| 5800                 | 48.2                               | 6.00                            | 3.82    | 3.82    | 3.82    | 0.60  | 1.90       | ± 13.1 %    |

<sup>c</sup> Frequency validity of ± 100 MHz only applies for DASY v4.4 and higher (see Page 2), else it is restricted to ± 50 MHz. The uncertainty is the RSS of the ConvF uncertainty at calibration frequency and the uncertainty for the indicated frequency band.

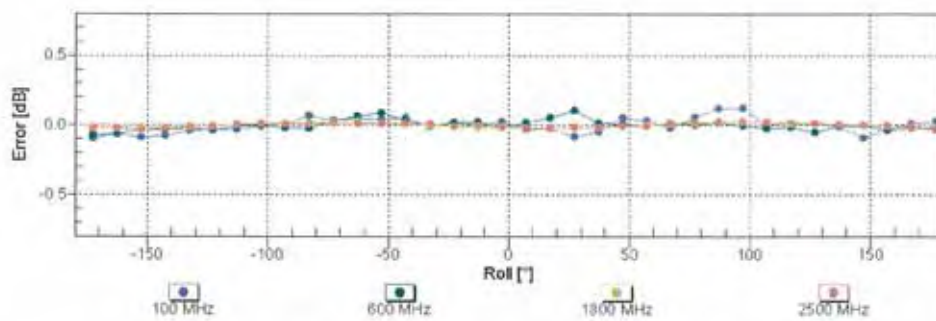
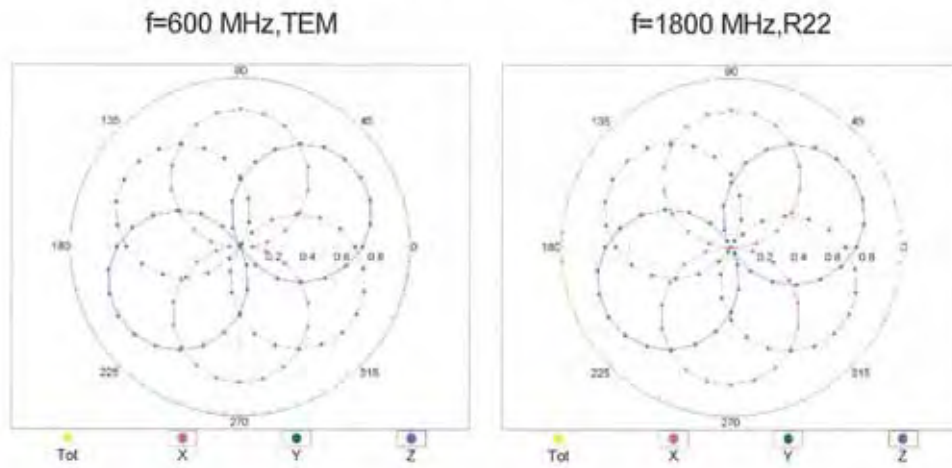
<sup>f</sup> At frequencies below 3 GHz, the validity of tissue parameters ( $\epsilon$  and  $\sigma$ ) can be relaxed to ± 10% if liquid compensation formula is applied to measured SAR values. At frequencies above 3 GHz, the validity of tissue parameters ( $\epsilon$  and  $\sigma$ ) is restricted to ± 5%. The uncertainty is the RSS of the ConvF uncertainty for indicated target tissue parameters.

### Frequency Response of E-Field (TEM-Cell:ifi110 EXX, Waveguide: R22)



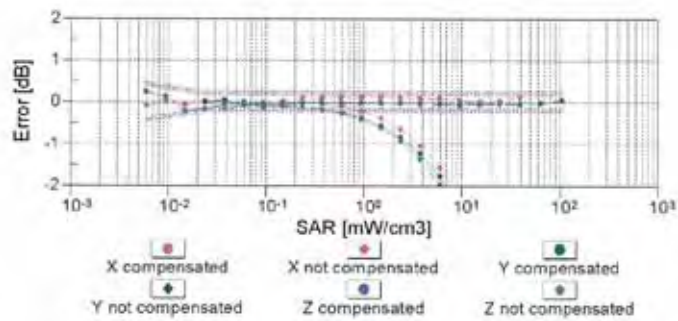
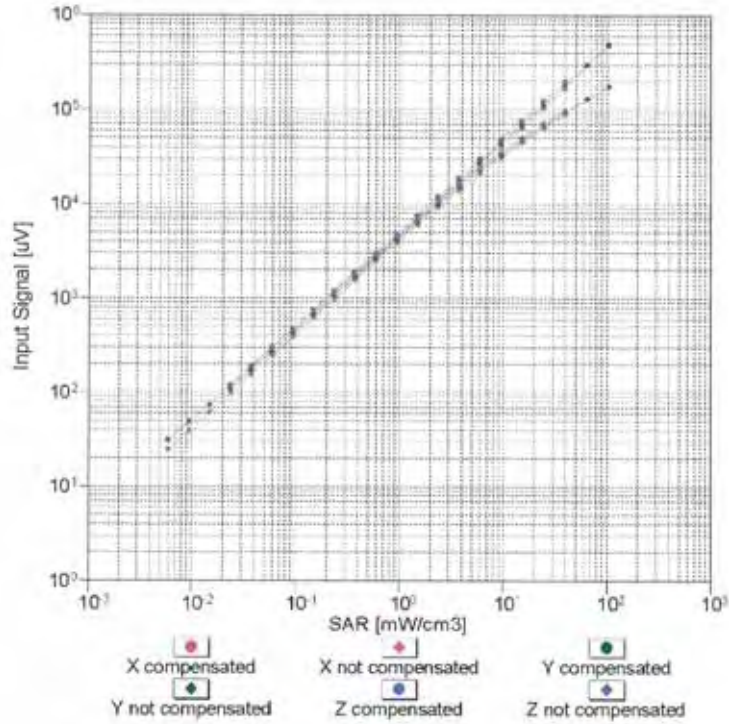
Uncertainty of Frequency Response of E-field:  $\pm 6.3\%$  (k=2)

### Receiving Pattern ( $\phi$ ), $\theta = 0^\circ$



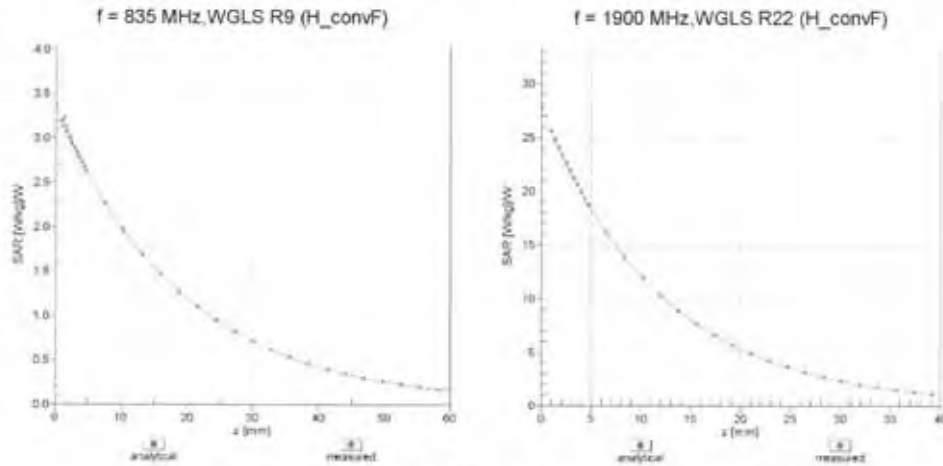
Uncertainty of Axial Isotropy Assessment:  $\pm 0.5\%$  (k=2)

### Dynamic Range f(SAR<sub>head</sub>) (TEM cell , f = 900 MHz)

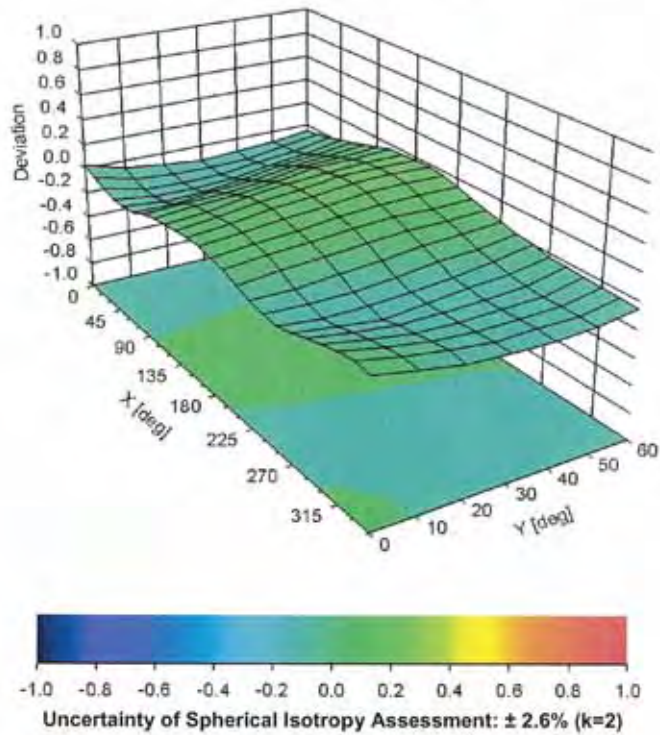


Uncertainty of Linearity Assessment: ± 0.6% (k=2)

### Conversion Factor Assessment



### Deviation from Isotropy in Liquid Error ( $\phi, \theta$ ), f = 900 MHz





EX3DV4- SN:3820

December 16, 2011

## DASY/EASY - Parameters of Probe: EX3DV4 - SN:3820

### Other Probe Parameters

|   |                |
|---|----------------|
| Sensor Arrangement                            | Triangular     |
| Connector Angle (°)                           | Not applicable |
| Mechanical Surface Detection Mode             | enabled        |
| Optical Surface Detection Mode                | disabled       |
| Probe Overall Length                          | 337 mm         |
| Probe Body Diameter                           | 10 mm          |
| Tip Length                                    | 9 mm           |
| Tip Diameter                                  | 2.5 mm         |
| Probe Tip to Sensor X Calibration Point       | 1 mm           |
| Probe Tip to Sensor Y Calibration Point       | 1 mm           |
| Probe Tip to Sensor Z Calibration Point       | 1 mm           |
| Recommended Measurement Distance from Surface | 2 mm           |





**Calibration Laboratory of  
Schmid & Partner  
Engineering AG**  
Zeughausstrasse 43, 8004 Zurich, Switzerland



**S** Schweizerischer Kalibrierdienst  
**C** Service suisse d'étalonnage  
**S** Servizio svizzero di taratura  
**S** Swiss Calibration Service

Accredited by the Swiss Accreditation Service (SAS)  
The Swiss Accreditation Service is one of the signatories to the EA  
Multilateral Agreement for the recognition of calibration certificates

Accreditation No.: **SCS 108**

Client **ATL (Auden)**

Certificate No: **DAE4-779\_Jan12**

## CALIBRATION CERTIFICATE

Object **DAE4 - SD 000 D04 BJ - SN: 779**

Calibration procedure(s) **QA CAL-06.v24  
Calibration procedure for the data acquisition electronics (DAE)**

Calibration date: **January 23, 2012**

This calibration certificate documents the traceability to national standards, which realize the physical units of measurements (SI).  
The measurements and the uncertainties with confidence probability are given on the following pages and are part of the certificate.

All calibrations have been conducted in the closed laboratory facility; environment temperature ( $22 \pm 3$ )°C and humidity < 70%.

Calibration Equipment used (M&TE critical for calibration)

| Primary Standards             | ID #               | Cal Date (Certificate No.) | Scheduled Calibration  |
|-------------------------------|--------------------|----------------------------|------------------------|
| Keithley Multimeter Type 2001 | SN: 0810278        | 28-Sep-11 (No:11450)       | Sep-12                 |
| Secondary Standards           | ID #               | Check Date (in house)      | Scheduled Check        |
| Calibrator Box V2.1           | SE UWS 053 AA 1001 | 05-Jan-12 (in house check) | In house check: Jan-13 |

Calibrated by: **Name** Dominique Steffen **Function** Technician **Signature**

Approved by: **Name** Fin Bornholt **Function** R&D Director **Signature**

Issued: January 23, 2012

This calibration certificate shall not be reproduced except in full without written approval of the laboratory.

Certificate No: DAE4-779\_Jan12

Page 1 of 5

**Calibration Laboratory of  
Schmid & Partner  
Engineering AG**  
Zeughausstrasse 43, 8004 Zurich, Switzerland



**S** Schweizerischer Kalibrierdienst  
**C** Service suisse d'étalonnage  
**S** Servizio svizzero di taratura  
**S** Swiss Calibration Service

Accredited by the Swiss Accreditation Service (SAS)  
The Swiss Accreditation Service is one of the signatories to the EA  
Multilateral Agreement for the recognition of calibration certificates

Accreditation No.: **SCS 108**

## Glossary

**DAE** data acquisition electronics  
**Connector angle** information used in DASY system to align probe sensor X to the robot coordinate system.

## Methods Applied and Interpretation of Parameters

- **DC Voltage Measurement:** Calibration Factor assessed for use in DASY system by comparison with a calibrated instrument traceable to national standards. The figure given corresponds to the full scale range of the voltmeter in the respective range.
- **Connector angle:** The angle of the connector is assessed measuring the angle mechanically by a tool inserted. Uncertainty is not required.
- The following parameters as documented in the Appendix contain technical information as a result from the performance test and require no uncertainty.
  - **DC Voltage Measurement Linearity:** Verification of the Linearity at +10% and -10% of the nominal calibration voltage. Influence of offset voltage is included in this measurement.
  - **Common mode sensitivity:** Influence of a positive or negative common mode voltage on the differential measurement.
  - **Channel separation:** Influence of a voltage on the neighbor channels not subject to an input voltage.
  - **AD Converter Values with inputs shorted:** Values on the internal AD converter corresponding to zero input voltage
  - **Input Offset Measurement:** Output voltage and statistical results over a large number of zero voltage measurements.
  - **Input Offset Current:** Typical value for information; Maximum channel input offset current, not considering the input resistance.
  - **Input resistance:** Typical value for information; DAE input resistance at the connector, during internal auto-zeroing and during measurement.
  - **Low Battery Alarm Voltage:** Typical value for information. Below this voltage, a battery alarm signal is generated.
  - **Power consumption:** Typical value for information. Supply currents in various operating modes.



### DC Voltage Measurement

A/D - Converter Resolution nominal

High Range: 1LSB = 6.1 $\mu$ V, full range = -100...+300 mV

Low Range: 1LSB = 61nV, full range = -1.....+3mV

DASY measurement parameters: Auto Zero Time: 3 sec; Measuring time: 3 sec

| Calibration Factors | X                        | Y                        | Z                        |
|---------------------|--------------------------|--------------------------|--------------------------|
| High Range          | 404.578 $\pm$ 0.1% (k=2) | 403.737 $\pm$ 0.1% (k=2) | 403.961 $\pm$ 0.1% (k=2) |
| Low Range           | 3.96952 $\pm$ 0.7% (k=2) | 3.97827 $\pm$ 0.7% (k=2) | 3.99341 $\pm$ 0.7% (k=2) |

### Connector Angle

|   |                                     |
|---|-------------------------------------|
| Connector Angle to be used in DASY system | 156.5 $^{\circ}$ $\pm$ 1 $^{\circ}$ |
|---|-------------------------------------|

## Appendix

### 1. DC Voltage Linearity

| High Range        | Reading ( $\mu\text{V}$ ) | Difference ( $\mu\text{V}$ ) | Error (%) |
|-------------------|---------------------------|------------------------------|-----------|
| Channel X + Input | 199992.36                 | -2.42                        | -0.00     |
| Channel X + Input | 20002.90                  | 2.80                         | 0.01      |
| Channel X - Input | -19995.39                 | 5.40                         | -0.03     |
| Channel Y + Input | 199995.92                 | 1.48                         | 0.00      |
| Channel Y + Input | 20002.78                  | 2.85                         | 0.01      |
| Channel Y - Input | -19998.45                 | 2.56                         | -0.01     |
| Channel Z + Input | 199992.89                 | -1.72                        | -0.00     |
| Channel Z + Input | 19998.87                  | -1.11                        | -0.01     |
| Channel Z - Input | -20000.07                 | 0.90                         | -0.00     |

| Low Range         | Reading ( $\mu\text{V}$ ) | Difference ( $\mu\text{V}$ ) | Error (%) |
|-------------------|---------------------------|------------------------------|-----------|
| Channel X + Input | 1998.52                   | -1.94                        | -0.10     |
| Channel X + Input | 200.77                    | -0.18                        | -0.09     |
| Channel X - Input | -199.69                   | -0.83                        | 0.42      |
| Channel Y + Input | 1999.48                   | -0.80                        | -0.04     |
| Channel Y + Input | 200.34                    | -0.55                        | -0.27     |
| Channel Y - Input | -198.10                   | 0.97                         | -0.49     |
| Channel Z + Input | 1998.95                   | -1.37                        | -0.07     |
| Channel Z + Input | 199.48                    | -1.44                        | -0.71     |
| Channel Z - Input | -199.41                   | -0.31                        | 0.16      |

### 2. Common mode sensitivity

DASY measurement parameters: Auto Zero Time: 3 sec; Measuring time: 3 sec

|           | Common mode Input Voltage (mV) | High Range Average Reading ( $\mu\text{V}$ ) | Low Range Average Reading ( $\mu\text{V}$ ) |
|-----------|--------------------------------|--|---|
| Channel X | 200                            | -4.09  | -4.76                                       |
|           | - 200                          | 6.36   | 4.04  |
| Channel Y | 200                            | 14.06  | 13.41                                       |
|           | - 200                          | -14.67                                       | -14.92                                      |
| Channel Z | 200                            | 3.23   | 1.98  |
|           | - 200                          | -5.02  | -4.73                                       |

### 3. Channel separation

DASY measurement parameters: Auto Zero Time: 3 sec; Measuring time: 3 sec

|           | Input Voltage (mV) | Channel X ( $\mu\text{V}$ ) | Channel Y ( $\mu\text{V}$ ) | Channel Z ( $\mu\text{V}$ ) |
|-----------|--------------------|-----------------------------|-----------------------------|-----------------------------|
| Channel X | 200                | -                           | -1.52                       | -1.21                       |
| Channel Y | 200                | 12.10                       | -                           | -1.51                       |
| Channel Z | 200                | 0.25                        | 12.60                       | -                           |

#### 4. AD-Converter Values with inputs shorted

DASY measurement parameters: Auto Zero Time: 3 sec; Measuring time: 3 sec

|           | High Range (LSB) | Low Range (LSB) |
|-----------|------------------|-----------------|
| Channel X | 15627            | 16393           |
| Channel Y | 15845            | 15908           |
| Channel Z | 16157            | 16150           |

#### 5. Input Offset Measurement

DASY measurement parameters: Auto Zero Time: 3 sec; Measuring time: 3 sec

Input 10M $\Omega$

|           | Average ( $\mu$ V) | min. Offset ( $\mu$ V) | max. Offset ( $\mu$ V) | Std. Deviation ( $\mu$ V) |
|-----------|--------------------|------------------------|------------------------|---------------------------|
| Channel X | -1.27              | -2.39                  | -0.17                  | 0.45                      |
| Channel Y | 0.05               | -1.36                  | 2.93                   | 0.64                      |
| Channel Z | -1.16              | -2.45                  | -0.25                  | 0.41                      |

#### 6. Input Offset Current

Nominal Input circuitry offset current on all channels: <25fA

#### 7. Input Resistance (Typical values for information)

|           | Zeroing (kOhm) | Measuring (MOhm) |
|-----------|----------------|------------------|
| Channel X | 200            | 200              |
| Channel Y | 200            | 200              |
| Channel Z | 200            | 200              |

#### 8. Low Battery Alarm Voltage (Typical values for information)

| Typical values | Alarm Level (VDC) |
|----------------|-------------------|
| Supply (+ Vcc) | +7.9              |
| Supply (- Vcc) | -7.6              |

#### 9. Power Consumption (Typical values for information)

| Typical values | Switched off (mA) | Stand by (mA) | Transmitting (mA) |
|----------------|-------------------|---------------|-------------------|
| Supply (+ Vcc) | +0.01             | +6            | +14               |
| Supply (- Vcc) | -0.01             | -8            | -9                |