



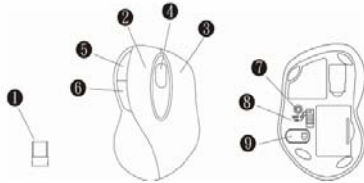
**Wireless laser mouse  
User's Manual**

**1. Contents**

- 2.4GHz Laser Mouse
- Micro Dongle
- Two AAA Batteries
- Mouse Driver CD
- User's Manual

**2. The RF mouse overview**

- |                   |                    |
|-------------------|--------------------|
| (1) Micro Dongle  | (7) Connect button |
| (2) Left Key      | (8) Power ON/OFF   |
| (3) Right Key     | (9) Laser LED      |
| (4) Roller Key    |                    |
| (5) Backward (B4) |                    |
| (6) Forward (B5)  |                    |



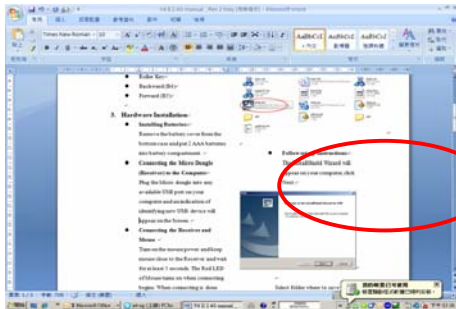
**3. Hardware Installation**

● **Installing Batteries:**

Remove the battery cover from the bottom case and put 2 AAA batteries into battery compartment.

● **Pairing the Micro Dongle (Receiver) to the Computer**

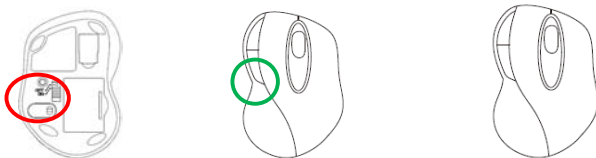
Plug the Micro dongle into any available USB port on your computer and an indication of identifying new USB device will appear on the Screen



● **Pairing the receiver and mouse**

Turn on the mouse power, keep the mouse close to the receiver and wait for at least 5 seconds. For the 1<sup>st</sup> pairing, the Green LED of mouse turns on when pairing begins. After pairing successful, the Green Led turns off automatically and an indication of new input

device will appear. The user can now start to enjoy the RF mouse. Note: If the Mouse is not first time use and had been "Turn Off" the power under different Resolution, when you "Turn ON" the power again, then it will appear the last memory resolution LED light.



5 seconds      Bottom Green LED "On"      "Off"

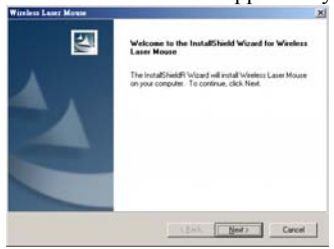
**4. Driver Installation (Notice: The driver supports Windows 2000 XP and Vista)**

Installation of driver CD will be done automatically once the CD is plugged in and recognized. In case it doesn't work, please try steps below:

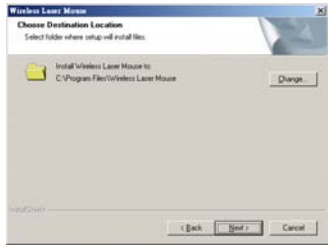
- **Insert the driver CD**



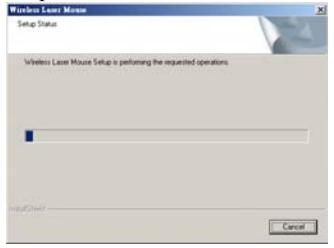
- **Follow set-up instructions:**  
The InstallShield Wizard will appear on your computer, click “Next”.



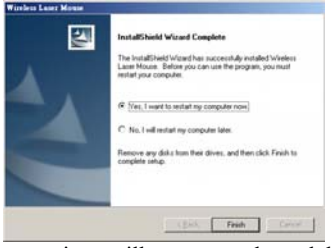
Select folder where to save the files and click “Next”.



Setup Status



Click Finish to complete setup.



A mouse icon will appear on the task bar.



**5. Battery Notice**

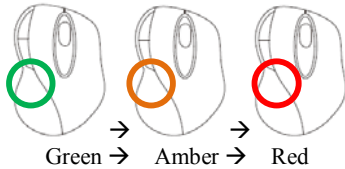
- When Red LED indicator appears, it means battery low. Please change the batteries immediately.



**TOP RED LED will be Flash**

**6. DPI Change and Indications**

- Press Right key and Wheel key at the same time for 3 seconds to change the DPI setting:
- Green Led – 800dpi (Default)
- Amber Led – 1200dpi
- Red Led – 1600dpi



## 7. Specifications



**{Mouse}** Weight : 86.5g

- Dimensions : 102.5(L)mm x 69.3(W)mm x 40.2(H)mm
- Power: Power rating 2.4V~3.2V DC; Current : 10mA( Max) @ 3V at Active mode.



**{Receiver}** Weight : 1.65g

- Dimensions : 18.89(L) x 12.98(W) x 5.62(H)mm

## 8. System Requirements

- IBM or compatible PC
- Compatibility (1) Hardware: USB Port
- (2) Operating Systems: Windows 2000, XP SP2, Vista 32/64bit

## 9. Certification

See label under Mouse module

## 10. Operating Tips

- Avoid using the mouse on a metal surface. Metals such as iron, aluminum, or copper shield the radio frequency transmission and may slow down the mouse's response time or cause the mouse to fail temporarily.
- The mouse enters to Sleep mode whenever your computer does. To activate the mouse, just move or click the mouse.
- Laser mouse works best in non-reflective surface.  
If cursor movements are lagging, placing the mouse on a mouse pad will help. Darker surface requires more energy to operate thus consumes more battery power.
- Different battery types and temperatures may affect the battery performance.
- The battery and the wireless module may be warm when being used continuously for an extended period of time. This is normal and not a malfunction.
- Conserve the battery power by switching the on/off switch to "off" position while traveling or if the mouse will not be in use for awhile. If you will not use the mouse for a long period of time. Remove the batteries from the battery compartment.

## 11. Troubleshooting

When the mouse doesn't work:

- Make sure that the polarity of the batteries is correct. The positive (+) and negative (-) ends of each battery must match the right connections in the battery compartment.
- Check if the receiver's USB plug is firmly connected to the USB port on your computer.
- Make sure that the appropriate device drivers are installed.
- Make sure that you have made a radio link between the mouse and its receiver.

The response time of the mouse is slow or the mouse intermittently stops working

- Make sure the power of battery is sufficient
- Turn off any wireless devices and their base units that are near the mouse's receiver.
- If you are using the mouse on a metal surface, move it to a non-metal surface. Metals such as iron, aluminum, or copper shield the radio frequency transmission and may influence the mouse's response time or cause the mouse to fail temporarily.

### **Federal Communication Commission Interference Statement**

This equipment has been tested and found to comply with the limits for a Class B digital device, pursuant to Part 15 of the FCC Rules. These limits are designed to provide reasonable protection against harmful interference in a residential installation. This equipment generates, uses and can radiate radio frequency energy and, if not installed and used in accordance with the instructions, may cause harmful interference to radio communications. However, there is no guarantee that interference will not occur in a particular installation. If this equipment does cause harmful interference to radio or television reception, which can be determined by turning the equipment off and on, the user is encouraged to try to correct the interference by one of the following measures:

- Reorient or relocate the receiving antenna.
- Increase the separation between the equipment and receiver.
- Connect the equipment into an outlet on a circuit different from that to which the receiver is connected.
- Consult the dealer or an experienced radio/TV technician for help.

This device complies with Part 15 of the FCC Rules. Operation is subject to the following two conditions: (1) This device may not cause harmful interference, and (2) this device must accept any interference received, including interference that may cause undesired operation.

*FCC Caution:* Any changes or modifications not expressly approved by the party responsible for compliance could void the user's authority to operate this equipment.

### **IMPORTANT NOTE:**

#### **FCC Radiation Exposure Statement:**

This equipment complies with FCC radiation exposure limits set forth for an uncontrolled environment. End users must follow the specific operating instructions for satisfying RF exposure compliance.

This transmitter must not be co-located or operating in conjunction with any other antenna or transmitter.

2008/12/08 Fujitsu Rev: B



## **CAUTION**

LASER RADIATION. DO NOT STARE INTO THE BEAM OR VIEW DIRECTLY WITH OPTICAL INSTRUMENTS. CLASS I LASER PRODUCT.

NEVER POINT A LASER BEAM INTO A PERSON'S EYES OR VIEW A LASER BEAM DIRECTLY, AS PROLONGED EXPOSURE CAN BE HAZARDOUS TO THE EYES.

MOMENTARY EXPOSURE FROM A LASER POINTER, SUCH AS AN INADVERTENT SWEEP OF THE LIGHT ACROSS A PERSON'S EYES, MAY CAUSE TEMPORARY FLASH BLINDNESS SIMILAR TO THE EFFECT OF A CAMERA FLASH BULB. ALTHOUGH THIS CONDITION IS TEMPORARY, IT CAN BECOME MORE DANGEROUS IF THE EXPOSED PERSON IS ENGAGED IN A VISION-CRITICAL ACTIVITY SUCH AS DRIVING