

# 1.Introduction

The Power Mate Wireless is a new generation input device that integrate mouse and electronic pen in one device. Advanced electromagnetic technology is used to builds a high resolution, battery free type cordless mouse that translates X-Y dimensional data into computer readable information. A cordless pen also be used in graphical and electronic business application. Its many use include :

- .Guiding the cursor on a computer screen.
- .Picking up location on application template.
- .Scroll forward and backward over window's application.
- .Additional side button for favorite function setting.
- .Signature in electronic business.
- .Hand writing and electronic signature
- .Free hand talking on Internet conference and white board.

The major characteristics of Power Mate Wireless are:

1. High resolution ball-less mouse.
2. Battery free wireless mouse and electronic pen.
3. Ergonomic palm-rest pad for mouse and pen operation.
4. Complex PS2 protocol for standard PS2 mouse, Microsoft IntelliMouse compatible , and Genius pen service .
5. Support PS2 hot plug feature.

## 1.1 Application

### Paint/3D/editing Application

Vendor	Product	Application
Adobe	Photo Shop	Image editing solution for print and web
	Illustrator	Industry standard illustration
	Premiere	Powerful tool for professional digital video editing
AVID	Media Composer	Computer-based picture and sound tools that are used to create content for information and entertainment.
BARCO Graphics	Artios	High quality, highly productive solutions for the graphic arts industry.
COREL	CorelDRAW	Graphics suite delivers integrated tools for illustration, page layout, photo editing and painting.
Deneba	Canvas	Professional illustration, photo editing, page design and presentation tool.
Dicomed	Studio Pro	Digital cameras and digital camera backs
	Big Shot	
Digits'n Art	Flesh	Character generation and animation flesh makes painting varnish, metallic effects, and a wide range of other surface treatments all remarkably simple and painless with its superb agility and real-time capability.
Discreet Logic		Visual effect, editing, broadcast and digital infrastructure solution for production professionals.
Jasc Software	Paint Shop	Graphics and photo editing tools with unrivaled ease of use, speed and affordable functionality.
Macromedia	Freehands	Graphics and animation software for the Web.
Mediascape	Artstream	Integrated application that allows unlimited creativity with high precision , resolution independent vector graphics

**Paint/3D/editing Application**

<b>Vendor</b>	<b>Product</b>	<b>Application</b>
MetaCreations	Bryce 4	4D dimensions of creativity
	Poser 4	3D character animation and figure design
MICROGRAFX	iGrafx DESIGNER	Intelligent way to create technical illustrations and web graphics.
MicroFrontler	Color IT!	Powerful image enhancement and painting program for the consumer market.
Microsoft	Image Composer	Easy way to arrange, customize, and create on-screen images without worrying about hard to learn layer masks and channels.
PUFFIN	Commotion	Tool for image editing, animation, matte creation, media tracking and compositing.
Right Hemisphee	4D PAINT	Advanced 3D paint system
Softkey	Photo Finish	Easy-to-use photo manipulation program
STRATA	Studio pro	Powerful creative tools for artists, multimedia designers, illustrators, architects, and animator.
	Video Shop	
	MediaPaint	
Ulead System	COOL 3D	Windows-based imaging and video production tools to help people use images, graphics and sound.

**Business Application**

<b>Vendor</b>	<b>Product</b>	<b>Application</b>
Lexicus/Motorola	WisdemPen	Handwriting recognition for Chinese language.
PARAGRAPH	PenOffice	Add useful pen-base application to Microsoft WORD 97 document markup, on-screen drawing and Scratch Pads
	Netwriter ink	
Cyber-SIGN	Biometric Signature	Hand writing signature to confirm the identity of a computer user without passwords. It provides personalized document authorization and increased privacy for electronic commerce.
Intel	ProShare Conference Video system	Flexible desktop video conference solution that let you communicate and share information worldwide.
Microsoft	Operation system	Internet programs for net meeting.
Netscape	CoolTalk	Real time audio and data collaboration tool for internet user.
Sagittal	ByHand	Fully functioning word processor that creates calligraphy or your own personal handwriting by typing directly into the computer.
SYMANTEC	WinFAX	Ability to annotate and mark up faxes directly on the computer.

## 2.Fundamental Specification

Platform Support	PC
Hardware Interface	PS2
Software Driver	GeniTab for Windows3.x, 95, 98, NT3.x , 4.x
Resolution	Up to 2540 DPI
Accuracy	0.01 inch
Proximity	6.5 mm from surface of tablet
Working Area	Horizontal : 120mm , Vertical : 90mm
Bit Rate	Standard PS2 timing
Report Rate	Up to 100 RPS in stream mode
Protocol	Standard PS2, Intelli PS2, Pen service in PS2
Power Source	PS2 +5V
Operation mode	Mouse and Pen mode
Technology	Electromagnetic
Cursor Support	S-09W Cordless pen and P08 cordless stick Mouse

FCC CLASS B, CE, BCIQ approved

### 3.Operation Characteristic

1.Mouse Pad : Support hot plug feature of PS2 port with (H) 120mm x (V) 90mm sketching area. The pad tracks the position where cursor is and translate to readable information to computer.

2.Cursor : A battery free cordless mouse build conventional left, right , Side key and sticker for scrolling function.

Direct screen-mapped ability increase cursor operating efficiency except conventional mouse relative displacement.

A battery free cordless electronic ball point pen can help to achieve signature and graphical processing.

3.Button operation force :

Tip button: 15±**5g**

Barrel button: 100±50g

Micro SW: 150g±30g

## 6. User Interface Specifications

### **About Genius Tablet**

Genius Tablet is a graphics tablet used to create or reproduce diagrams, drawings, building layouts, maps, etc. You can then save these graphics into your computer for other uses.

### **Using this tablet, you can:**

Trace anything; pictures, drawings, photos, maps, etc.

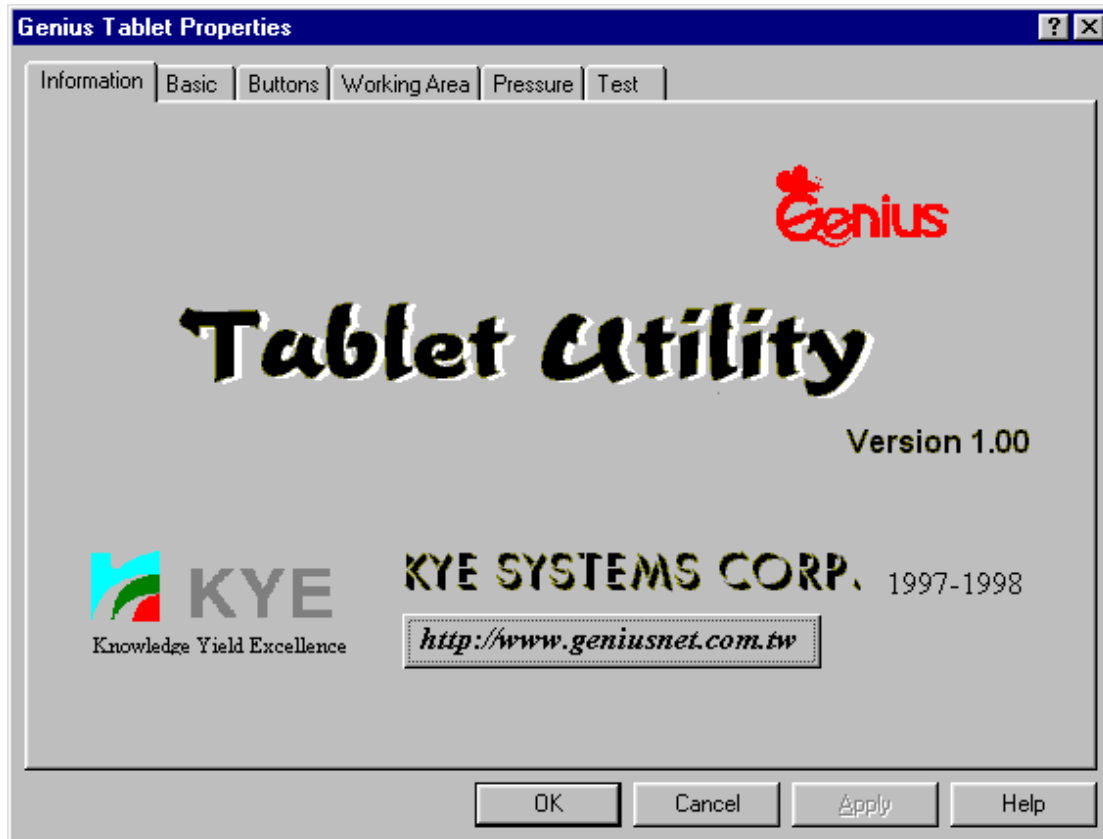
Draw freehand; achieve precision and accuracy

Move the puck (or stylus) to select commands on the template, or move objects on the screen  
Create a symbol library for your most often used symbols using AutoCAD

## 6.1 Information Folder

### General Information

The Information Folder has general information about the Genius Tablet such as version, corporation name and linking to Genius Web Site,etc.





## 6.2 Basic Folder

### · Changing the Tablet Orientation

Orientation allows you to rotate the Genius Tablet 90 degrees. Landscape is the normal operating position (with the tablet's interface cables exiting the top of the tablet). Selecting Portrait allows you to rotate the tablet 90 degrees clockwise from the normal operating position (so the tablet's interface cables would be exiting from the right hand side of the tablet). Try changing to portrait orientation if you prefer using your tablet in a vertical orientation, like a typical sketch pad.

### · Double-Click Test

In the Double-Click Test Box, you can set the widest and highest distance between the two points of double click and you can set the speed of double click by dragging the pointer on the slider bar or clicking on the slider bar. Then test the speed in the "Smiling" area.

### · Tracking Mode

The Tracking Mode function allows you to switch how the Genius Tablet moves the screen cursor.

The Absolute tracking mode is the normal (default) tablet mode. In absolute mode the screen is directly mapped to the tablet's active area. In this mode, the lower left corner of the tablet's active area corresponds to the lower left corner of the screen, the upper right corner on the tablet corresponds to the upper right corner of the screen, etc. When you place a pointing device on the tablet, the screen cursor would jump to the location on the screen that directly corresponds to the position on the tablet. You'll notice that you don't have to "row" the cursor (e.g., pick up and move over and move again) like you often have to do with a conventional mouse.

On the other hand, in Relative tracking mode you move the screen cursor just like you would with a mouse. In relative mode it's possible to find yourself with the screen cursor at one side of the screen, while your pointing device is at the opposite side of the tablet. In that case, you would have to pick up and move your pointing device just like you would do with a mouse. You can set the Relative Resolution in this area by clicking the bar. The resolution means the number of pixel in an inch. The resolution is higher on the right side than on the left side.

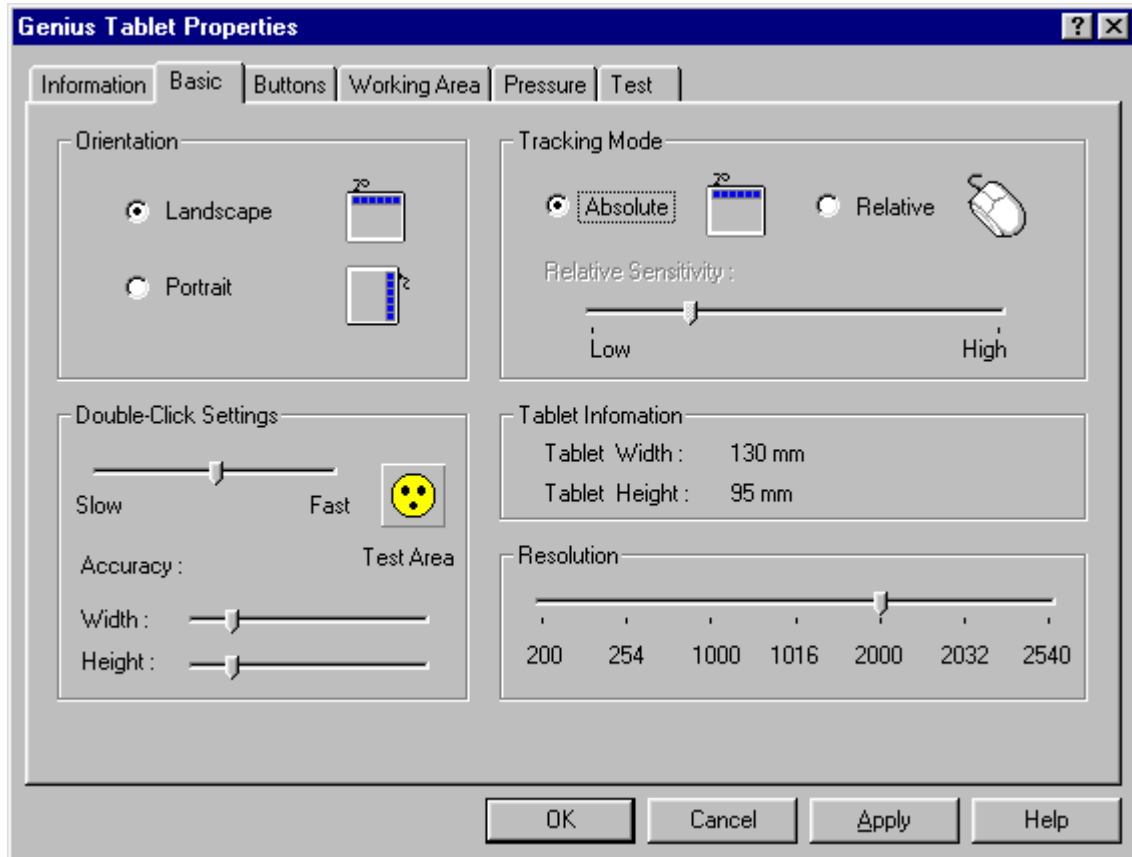


### · Tablet Information

You can see the width and height of the tablet in this area.

### · Adjust the Resolution in Absolute Mode

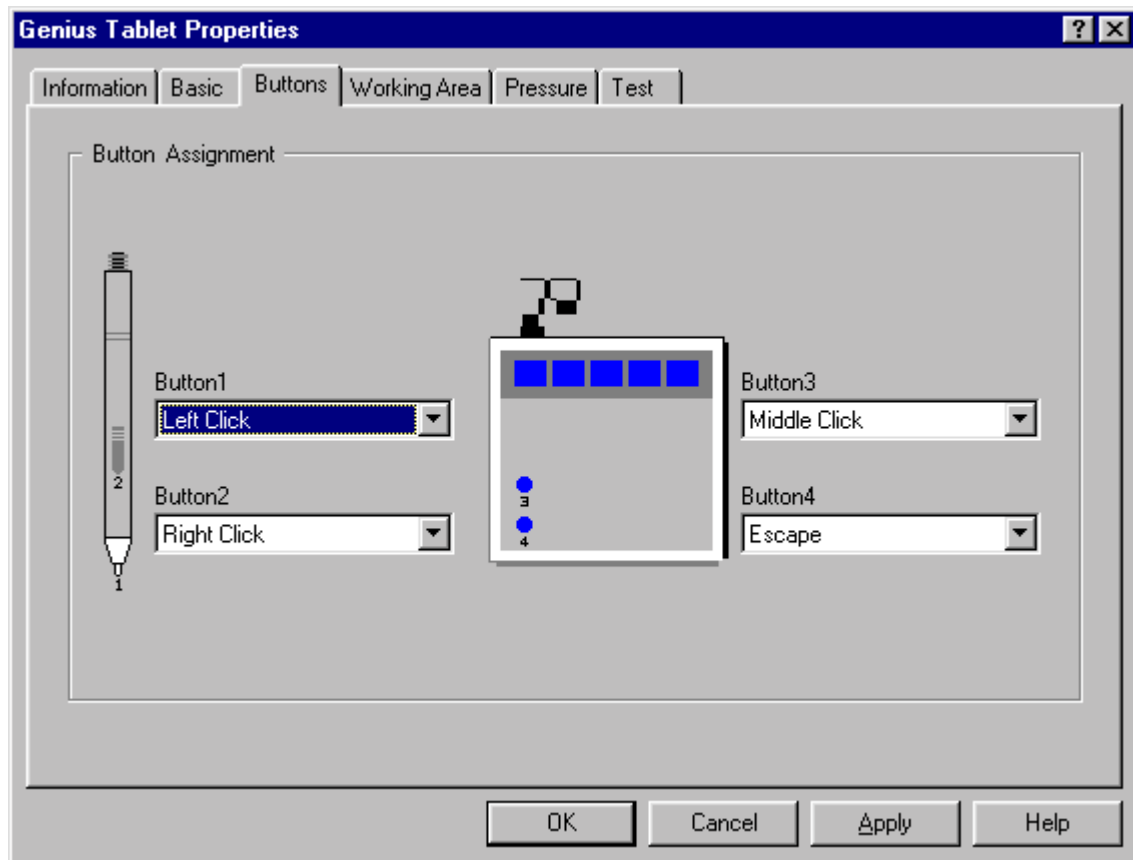
In the Resolution area, you can set the resolution of the tablet in absolute tracking mode. The resolution refers to the number of pixel in an inch. You can set it from 254 to 2540.



## 6.3 Button Assignment Folder

### Use the Button Assignment Function

The Button Assignment function allows you to change the function of the buttons on your pointing device. Select which pointing device you are using from the Pointing Device list. This would allow you to change the functions assigned to the different buttons on that device. Simply pick the button in the Assignment area that corresponds to the pointing device button you wish to change and then select from the function list the function you wish to assign to that button. You can set the function of your button as Left Click, Right Click, Middle Double Click, Copy, etc.



## 6.4 Working Area Folder

### Adjust Working Area

The default option is the Whole Tablet.

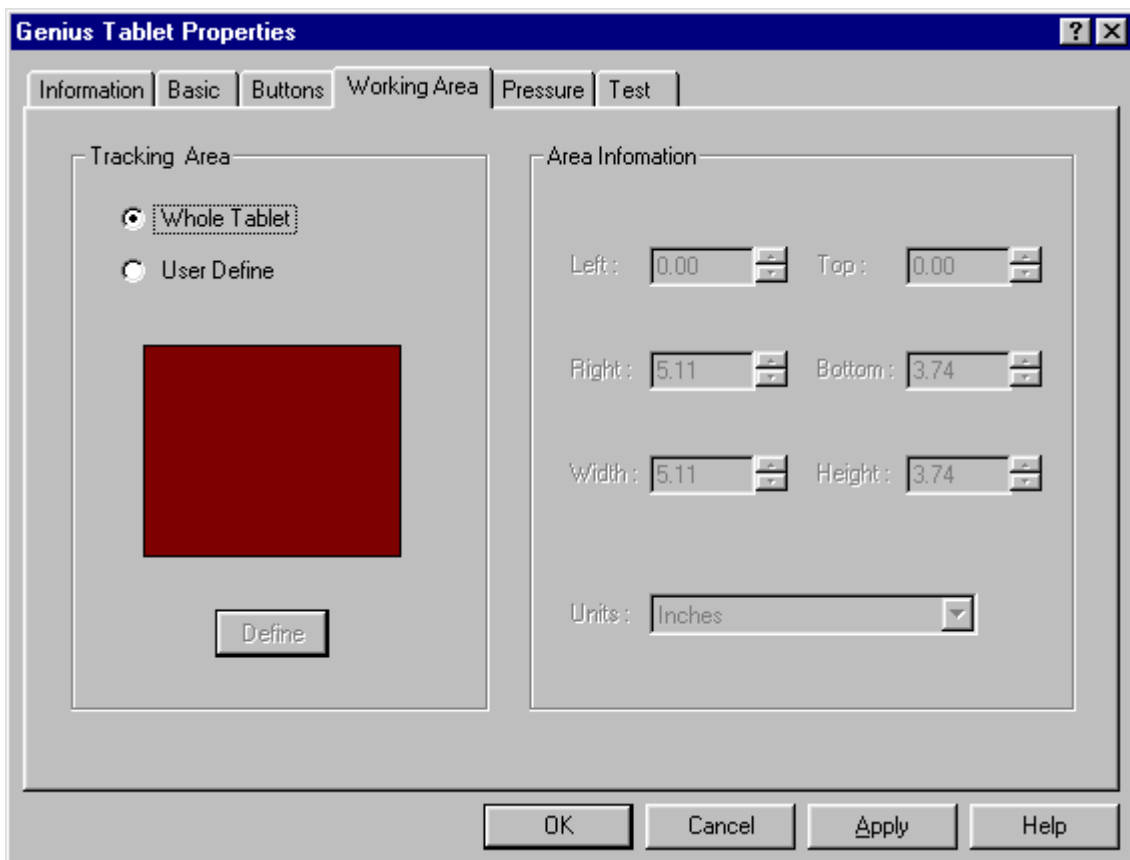
When the Tracking Mode in the Basic folder is Absolute, you can define the tracking area as your require. This is especially useful if you have a large tablet and you want to define a smaller active area so you don't have to move the pointing device around so far on the tablet.

In order to set the tracking area:

- 1) Choose the Preserve Aspect.
- 2) Click on the Define button, then the define area will turn grey.
- 3) Click on any button in the define area, drag the puck, then click the button again.

The area will be defined. Some information about the defined area such as Top, Bottom, Right, Left, Width, Height will appear in the Area Information. You can change the units from inch to centimeters. If you change it ,the number information will also be changed.

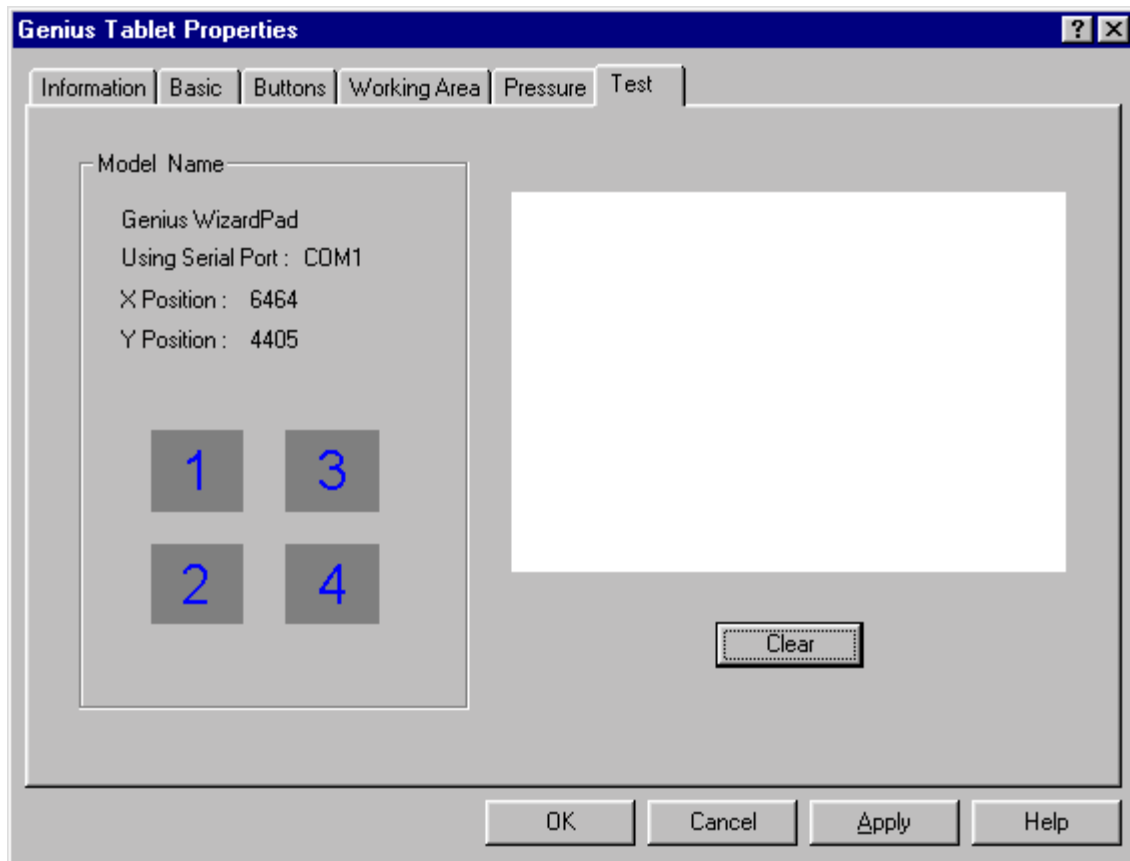
You can input the number of Left, Top, Right, Bottom, Width and Height or click on these up-down controls in the Area Information as you require, then the working area will be defined.



## 6.5 Test Folder

### Test Your Buttons

In this area, you can verify if all of your pointing device buttons are operating properly. Move your pointing device around the tablet and press the buttons (and the pen tip, if using a stylus). You will see the position of the cursor on the screen in the Model Name area, and the button in this area will flash to respond to the button presses. When you move your puck in the test area on the right side , you will see trails remain responding your button's movement. Click on "clear" to clear this area.



## 6.6 Pressure Folder

### Pressure

For the WizardPad, you can use the Pressure folder in the Genius Tablet Control Panel.

If you want to adjust the pressure, click "Customize in Pressure Mode area", then you can customize the feel of your pressure-sensitive pen by setting these options.

Threshold allows you to define how hard you have to press on the tip of the pen before it "reads" a "click," and the function assigned to it is executed. The threshold can be set from 0 to 255.

Pressure Response allows you to set how soft or firm the pen feels when drawing. The pen is harder when you increase the number.

The Test Area is a small pressure-sensitive drawing area that allows you to test how the pen reacts to the options in the control panel. You can click on "clear" to clear the area.

