

FCC PART 15C TEST REPORT FOR CERTIFICATION
On Behalf of

KYE SYSTEMS CORP.

Wireless Mouse

Model Number: NX-7000

Additional Model: XX-XXXX

FCC ID: FSUGMZLL

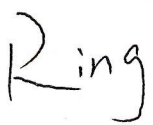
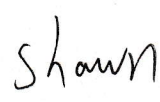

Prepared for:	KYE SYSTEMS CORP.
	No. 492, Sec. 5, Chongxin Rd., Sanchong Dist., New Taipei City 24160,
	Taiwan (R.O.C.)
Prepared By:	EST Technology Co., Ltd.
	Chilingxiang, Qishantou, Santun, Houjie, Dongguan, Guangdong, China
	Tel: 86-769-83081888-808

Report Number:	ESTE-R1912067
Date of Test:	Nov. 28~Dec. 11, 2019
Date of Report:	Dec. 12, 2019

TABLE OF CONTENTS

Description	Page
TEST REPORT VERIFICATION	3
1. GENERAL INFORMATION	4
1.1. Description of Device (EUT)	4
1.2. Antenna Information	4
2. SUMMARY OF TEST	5
2.1. Summary of test result	5
2.2. Test Facilities	6
2.3. Measurement uncertainty	7
2.4. Assistant equipment used for test	7
2.5. Block Diagram	7
2.6. Test Mode	8
2.7. Power Setting of Test Software	8
2.8. Channel List	8
2.9. Test Equipment List	9
3. RADIATED SPURIOUS EMISSIONS AND BAND EDGE	10
3.1. Limit	10
3.2. Test Setup	12
3.3. Spectrum Analyzer Setting	12
3.4. Test Procedure	12
3.5. Test Result	13
4. TEST SETUP PHOTO	15
5. EUT PHOTO	16

EST Technology Co., Ltd.

Applicant:	KYE SYSTEMS CORP.		
Address:	No. 492, Sec. 5, Chongxin Rd., Sanchong Dist., New Taipei City 24160, Taiwan (R.O.C)		
Manufacturer:	Dongguan Kunying Computer Products Co., Ltd		
Address:	Baodun Industrial District, Houjie Town, Dongguan City, Guangdong Province, 523961 China		
E.U.T:	Wireless Mouse		
Model Number:	NX-7000		
Additional Model:	XX-XXXX Note: They are identical except model name only. X can be any one number or character(such as 0 to 9, or A to Z, or other special character “-,ect.”)		
Power Supply:	DC 1.5V(1.5V*AA*1) From Battery		
Trade Name:	Genius	Serial No.:	-----
Date of Receipt:	Nov. 28, 2019	Date of Test:	Dec. 07, 2019
Test Specification:	FCC Part 15 Subpart C (15.249) ANSI C63.10:2013		
Test Result:	<p>The device described above is tested by EST Technology Co., Ltd. The measurement results were contained in this test report and EST Technology Co., Ltd. was assumed full responsibility for the accuracy and completeness of these measurements. Also, this report shows that the EUT to be technically compliance with the FCC Rules and Regulations Part 15 Subpart C requirements.</p> <p style="text-align: center;">This report applies to above tested sample only and shall not be reproduced in part without written approval of EST Technology Co., Ltd.</p>		
		Date: Dec. 12, 2019	
Prepared by:	Reviewed by:	Approved by:	
			
Ring / Assistant	Shawn/ Engineer	Iceman Hu / Manager	
Other Aspects:			
Note: Because the product circuit and RF parameters have not changed, only the PCB LAYOUT has been changed, so just re-tested spurious Emissions (30-1000MHz), other test item needn't re-tested, Test data refer to test report “RF160119N063”.			
Abbreviations: OK/P=passed fail/F=failed n.a/N=not applicable E.U.T=equipment under tested			
This test report is based on a single evaluation of one sample of above mentioned products ,It is not permitted to be duplicated in extracts without written approval of EST Technology Co., Ltd.			



1. GENERAL INFORMATION

1.1. Description of Device (EUT)

Product Name	:	Wireless Mouse
Model Number	:	NX-7000
Software Version	:	N/A
Hardware Version	:	N/A
Operation frequency	:	2407MHz to 2477MHz
Number of channel	:	16
Field Strength of Fundamental	:	90.6dB μ V/m
Modulation Type	:	GFSK
Sample Type	:	Prototype production

Note:

For a more detailed features description, please refer to the manufacturer's specifications or the user's manual.

1.2. Antenna Information

Ant No.	Brand	Model Name	Antenna Type	Connector	Gain (dBi)
1	N/A	N/A	Internal	N/A	0

2. SUMMARY OF TEST

2.1. Summary of test result

Report Section	Description of Test Item	FCC Standard Section	Results
3	Field Strength of Fundamental	15.249(a)	N/A
4	Radiated Spurious Emissions and Band Edge	15.205 15.209 15.249(a)(c)(d)(e) 15.35(b)	PASS
5	20dB Bandwidth	15.215	N/A
6	AC Power Line Conducted Emissions	15.207	N/A
7	Antenna Requirement	15.203	N/A

Note:

(1) "N/A" denotes test is not applicable in this test report

2.2. Test Facilities

EMC Lab

: Certificated by CNAS, CHINA
Registration No.: L5288
Date of registration: November 13, 2017

Certificated by FCC, USA
Designation Number: CN1215
Test Firm Registration Number: 722932
Date of registration: November 21, 2017

Certificated by A2LA, USA
Registration No.: 4366.01
Date of registration: November 07, 2017

Certificated by Industry Canada
CAB identifier No.: CN0035
Date of registration: January 04, 2019

Certificated by VCCI, Japan
Registration No.: R-13663; C-14103
Date of registration: July 25, 2017
This Certificate is valid until: July 24, 2020

Certificated by TUV Rheinland, Germany
Registration No.: UA 50413872 0001
Date of registration: July 31, 2018

Certificated by TUV/PS, Shenzhen
Registration No.: SCN1017
Date of registration: January 27, 2011

Certificated by Intertek ETL SEMKO
Registration No.: 2011-RTL-L2-64
Date of registration: April 28, 2011

Certificated by Nemko, Hong Kong
Registration No.: 175193
Date of registration: May 4, 2011

Name of Firm : EST Technology Co., Ltd.

Site Location : Chilingxiang, Qishantou, Santun, Houjie, Dongguan, Guangdong, China

2.3. Measurement uncertainty

Test Item	Uncertainty
Uncertainty for Conduction emission test	±3.48dB
Uncertainty for spurious emissions test (30MHz-1GHz)	±4.60 dB(Polarize: H)
	±4.68 dB(Polarize: V)
Uncertainty for spurious emissions test (1GHz to 18GHz)	±4.96dB
Uncertainty for radio frequency	7×10^{-8}
Uncertainty for conducted RF Power	0.20dB
Uncertainty for Power density test	0.26dB

Note: This uncertainty represents an expanded uncertainty expressed at approximately the 95% confidence level using a coverage factor of k=2.

2.4. Assistant equipment used for test

Item	Equipment	Brand	Model Name/Type No.	FCC ID	Series No.
-	-	-	-	-	-

Item	Shielded Type	Ferrite Core	Length	Note
-	-	-	-	-

2.5. Block Diagram

For radiated emissions test: EUT was placed on a turn table, which is 0.8 (or 1.5) meter high above ground. EUT was beset into test mode by software before test. New battery is used during all test.



(EUT: Wireless Mouse)

2.6. Test Mode

The test mode was selected for the final test as listed below.

Test Item	Test Mode	Test Channel
Field Strength of Fundamental	N/A	N/A
Radiated Spurious Emissions	TX	Low/Middle/High
20dB Bandwidth&99% Occupied Bandwidth	N/A	N/A
AC Power Line Conducted Emissions	N/A	N/A

Note:

1. In radiated measurement, the EUT had been pre-scan on the positioned of each 3 axis(X,Y,Z), the worst case was found when positioned on **X-plane**.

2.7. Power Setting of Test Software

Software Name	N/A		
Frequency(MHz)	2407	2440	2477
Setting	default	default	default

2.8. Channel List

Channel	Frequency (MHz)	Channel	Frequency (MHz)	Channel	Frequency (MHz)
1	2407	7	2435	13	2455
2	2408	8	2437	14	2467
3	2410	9	2440	15	2468
4	2414	10	2441	16	2477
5	2421	11	2442		
6	2428	12	2449		

2.9. Test Equipment List

For radiated emissions test (30MHz-1000MHz)						
Equipment	Manufacturer	Model No.	Serial No.	Calibration Body	Last Cal.	Next Cal.
EMI Test Receiver	Rohde & Schwarz	ESR7	EST-E047	LISAI	June 14,19	1 Year
Bilog Antenna	Teseq	CBL 6111D	EST-E034	LISAI	June 14,19	1 Year
Test Software	Audix	e3-6.111221a	N/A	N/A	N/A	N/A
30-1000MHz Cable	N/A	EST-002	N/A	N/A	N/A	N/A

3. RADIATED SPURIOUS EMISSIONS AND BAND EDGE

3.1. Limit

(a) The field strength of emissions from intentional radiators operated within these frequency bands shall comply with the following:

Fundamental frequency	Field strength of harmonics@3m (microvolts/meter)	Average Limit@3m dBµV/m	Peak Limit@3m dBµV/m
902-928MHz	500	54	74
2400-2483.5MHz	500	54	74
5725-5875MHz	500	54	74
24.0-24.25	2500	68	88

(b) Field strength limits are specified at a distance of 3 meters.

(c) Emissions radiated outside of the specified frequency bands, except for harmonics, shall be attenuated by at least 50 dB below the level of the fundamental or to the general radiated emission limits in §15.209, whichever is the lesser attenuation.

15.209 Radiated emission limits

Frequency (MHz)	Field Strength(µV/m)	Distance(m)
0.009-0.490	2400/F(kHz)	300
0.490-1.705	24000/F(kHz)	30
1.705-30	30	30
30-88	100	3
88-216	150	3
216-960	200	3
Above 960	500	3

15.205 Restricted frequency band

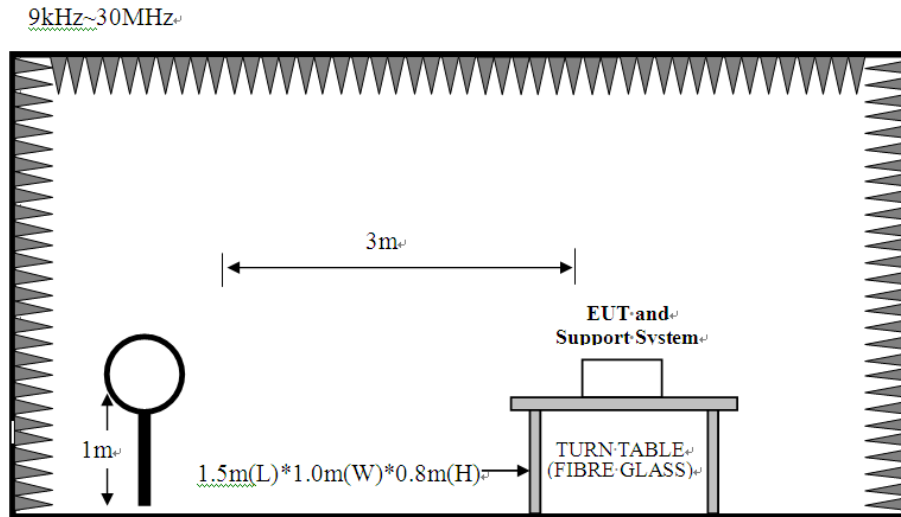
MHz	MHz	MHz	GHz
0.090 - 0.110	16.42 - 16.423	399.9 - 410	4.5 - 5.15
¹ 0.495 - 0.505	16.69475 - 16.69525	608 - 614	5.35 - 5.46
2.1735 - 2.1905	16.80425 - 16.80475	960 - 1240	7.25 - 7.75
4.125 - 4.128	25.5 - 25.67	1300 - 1427	8.025 - 8.5
4.17725 - 4.17775	37.5 - 38.25	1435 - 1626.5	9.0 - 9.2
4.20725 - 4.20775	73 - 74.6	1645.5 - 1646.5	9.3 - 9.5
6.215 - 6.218	74.8 - 75.2	1660 - 1710	10.6 - 12.7
6.26775 - 6.26825	108 - 121.94	1718.8 - 1722.2	13.25 - 13.4
6.31175 - 6.31225	123 - 138	2200 - 2300	14.47 - 14.5
8.291 - 8.294	149.9 - 150.05	2310 - 2390	15.35 - 16.2
8.362 - 8.366	156.52475 - 156.52525	2483.5 - 2500	17.7 - 21.4
8.37625 - 8.38675	156.7 - 156.9	2690 - 2900	22.01 - 23.12
8.41425 - 8.41475	162.0125 - 167.17	3260 - 3267	23.6 - 24.0
12.29 - 12.293	167.72 - 173.2	3332 - 3339	31.2 - 31.8
12.51975 - 12.52025	240 - 285	3345.8 - 3358	36.43 - 36.5
12.57675 - 12.57725	322 - 335.4	3600 - 4400	(²)

- (d) As shown in §15.35(b), for frequencies above 1000 MHz, the field strength limits in paragraphs (a) of this section are based on average limits. However, the peak field strength of any emission shall not exceed the maximum permitted average limits specified above by more than 20 dB under any condition of modulation

Note:

- (1) Emission level $\text{dB}\mu\text{V} = 20 \log$ Emission level $\mu\text{V}/\text{m}$.
- (2) The smaller limit shall apply at the cross point between two frequency bands.
- (3) Distance is the distance in meters between the measuring instrument, antenna and the closest point of any part of the device or system.

3.2. Test Setup



3.3. Spectrum Analyzer Setting

For 30MHz-1000MHz

Spectrum Parameters	Setting
RBW	120KHz
VBW	300KHz
Start frequency	30MHz
Stop frequency	1000MHz
Sweep Time	Auto
Detector	QP
Trace Mode	Max Hold

3.4. Test Procedure

- EUT was placed on a turn table, which is 0.8 meter high above ground for below 1GHz test, and which is 1.5 meter high above ground for above 1GHz test.
- EUT is set 3 meters away from the receiving antenna, which is mounted on a antenna tower.
- Set the EUT transmit continuously with maximum output power.
- The turn table can rotate 360 degrees to determine the position of the maximum emission level.
- The antenna can be moved up and down between 1 meter and 4 meters to find out the maximum emission level. Both horizontal and vertical polarization of the antenna are set on test.
- Spectrum analyzer setting parameters in accordance with section 4.3.
- Repeat above procedures until all channels were measured.
- Record the results in the test report.

Note:

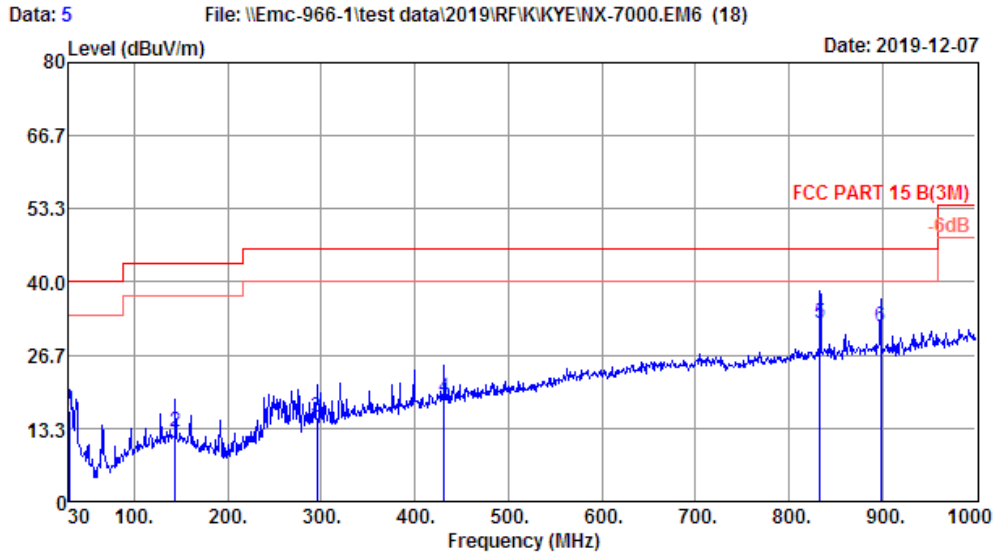
- For emissions above 1GHz, if peak level comply with average limit, then the average level is deemed to comply with average limit.
- The frequency 2407MHz/2440MHz/2477MHz are fundamental frequency.

3.5. Test Result

Radiated Emissions Below 1GHz

EST Technology

Chilingxiang, Qishantou, Santun,
Houjie, Dongguan, Guangdong, China
Tel: +86-769-83081888
Fax: +86-769-83081878



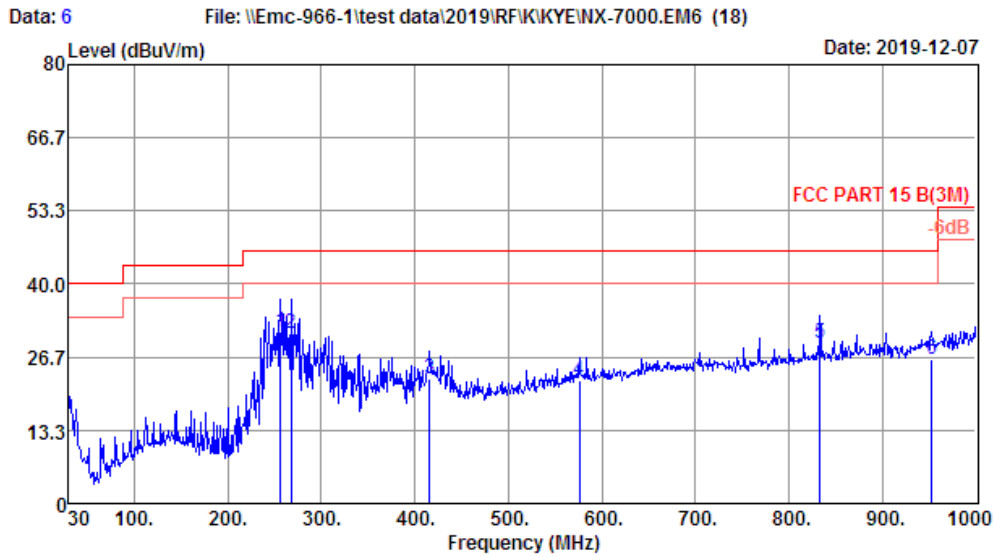
Site no. : 1# 966 Chamber Data no. : 5
 Dis. / Ant. : 3m 37062 Ant. pol. : VERTICAL
 Limit : FCC PART 15 B(3M)
 Env. / Ins. : Temp:21.6';Humi:51.5%;Press:101.52kPa
 Engineer : Boris
 EUT : Wireless Mouse
 Power : DC 1.5V From Battery
 M/N : NX-7000
 Test Mode : TX Mode

	Freq. (MHz)	ANT Factor (dB/m)	Cable Loss (dB)	Reading (dBuV)	Emission Level (dBuV/m)	Limit (dBuV/m)	Margin (dB)	Remark
1	30.97	17.60	0.14	-1.34	16.40	40.00	23.60	QP
2	143.49	11.97	1.06	-0.41	12.62	43.50	30.88	QP
3	295.78	13.56	1.83	-0.16	15.23	46.00	30.77	QP
4	431.58	16.90	2.35	-0.39	18.86	46.00	27.14	QP
5	833.16	23.43	3.71	5.22	32.36	46.00	13.64	QP
6	898.15	23.90	3.88	4.16	31.94	46.00	14.06	QP

Remarks: 1. Emission Level= Antenna Factor + Cable Loss + Reading.
 2. Margin= Limit - Emission Level.
 3. The emission levels that are 20dB below the official limit are not reported.

EST Technology

Chilingxiang, Qishantou, Santun,
Houjie, Dongguan, Guangdong, China
Tel: +86-769-83081888
Fax: +86-769-83081878



Site no. : 1# 966 Chamber Data no. : 6
 Dis. / Ant. : 3m 37062 Ant. pol. : HORIZONTAL
 Limit : FCC PART 15 B(3M)
 Env. / Ins. : Temp:21.6';Humi:51.5%;Press:101.52kPa
 Engineer : Boris
 EUT : Wireless Mouse
 Power : DC 1.5V From Battery
 M/N : NX-7000
 Test Mode : TX Mode

	Freq. (MHz)	ANT Factor (dB/m)	Cable Loss (dB)	Reading (dBuV)	Emission Level (dBuV/m)	Limit (dBuV/m)	Margin (dB)	Remark
1	256.01	13.52	1.67	16.09	31.28	46.00	14.72	QP
2	267.65	13.20	1.73	16.17	31.10	46.00	14.90	QP
3	416.06	16.58	2.16	4.05	22.79	46.00	23.21	QP
4	576.11	19.96	2.91	-0.34	22.53	46.00	23.47	QP
5	833.16	23.43	3.71	2.06	29.20	46.00	16.80	QP
6	952.47	24.63	4.57	-2.87	26.33	46.00	19.67	QP

Remarks: 1. Emission Level= Antenna Factor + Cable Loss + Reading.
 2. Margin= Limit - Emission Level.
 3. The emission levels that are 20dB below the official limit are not reported.

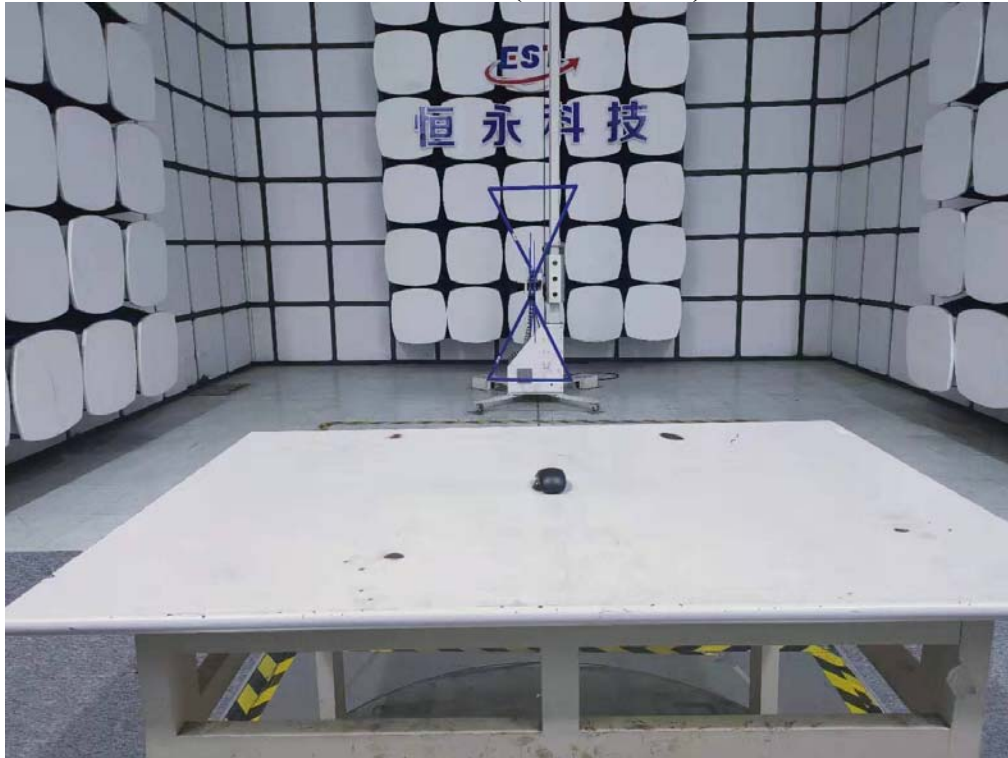
Note:

1. The amplitude of 9KHz to 30MHz spurious emission that is attenuated by more than 20dB below the permissible limit has no need to be reported.
2. All channels had been pre-test, only the worst case was reported.



4. TEST SETUP PHOTO

Radiated Test (Below 1GHz)



5. EUT PHOTO

External Photos
M/N: NX-7000



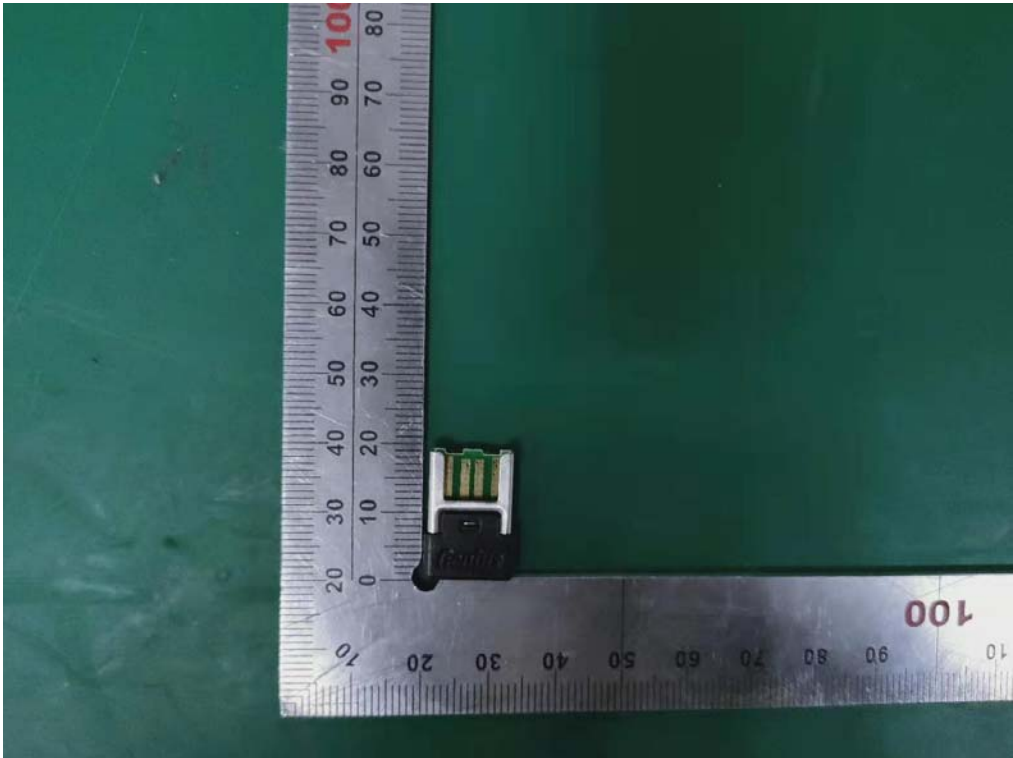
External Photos
M/N: NX-7000



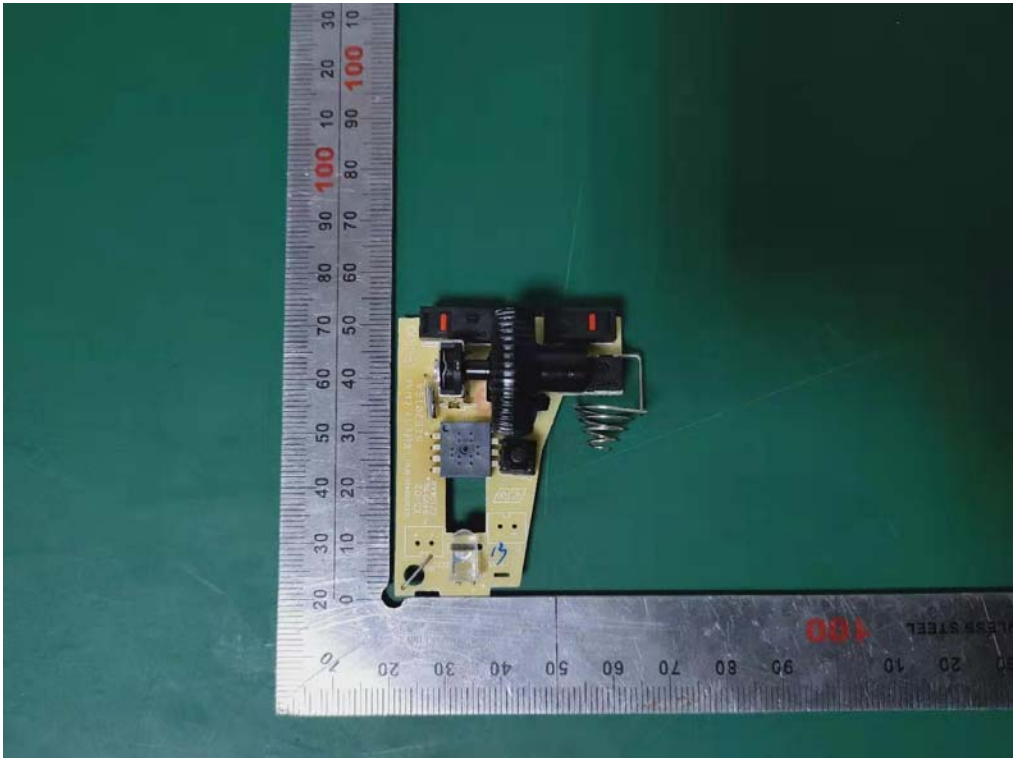
External Photos
M/N: NX-7000



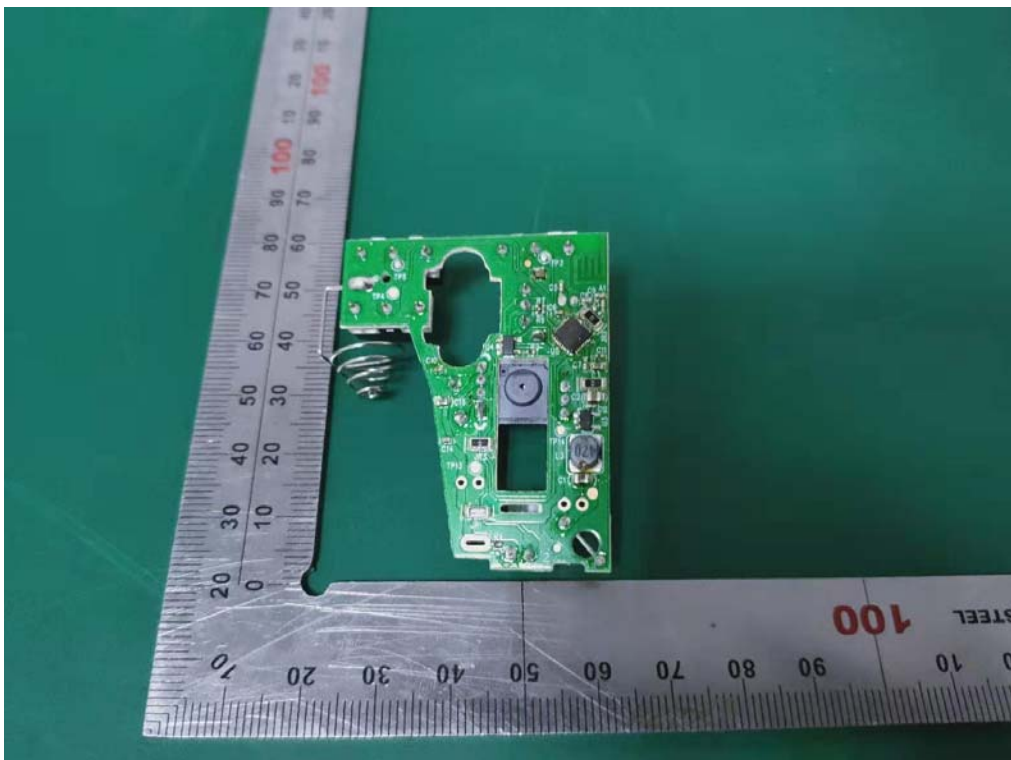
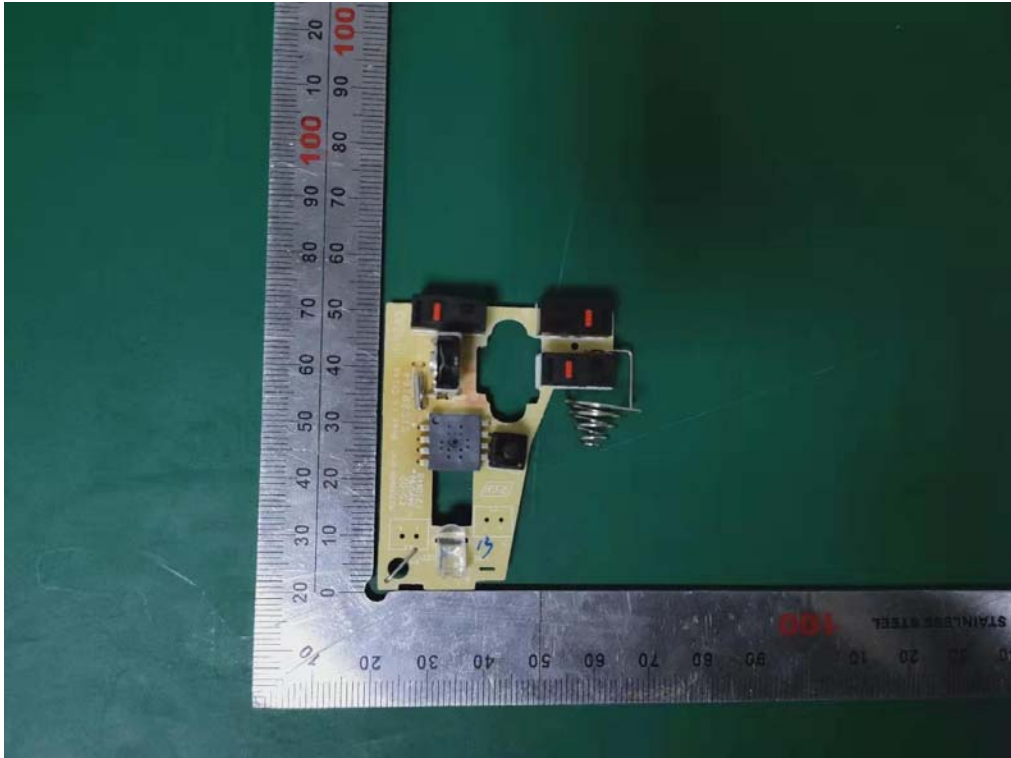
Internal Photos
M/N: NX-7000



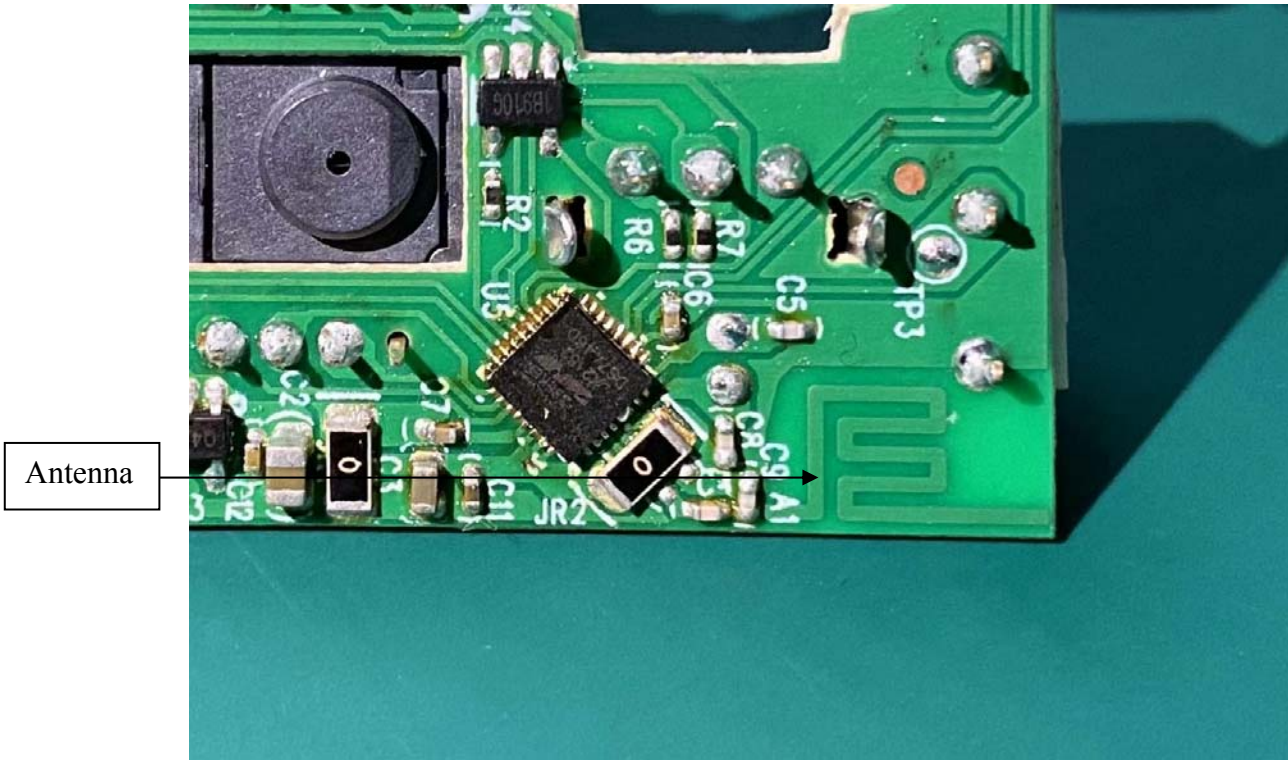
Internal Photos
M/N: NX-7000



Internal Photos
M/N: NX-7000



Internal Photos
M/N: NX-7000



End of Test Report