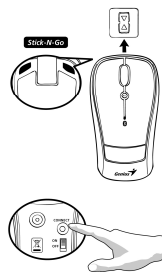


Introduction

Traveler 9005BT is designed for a PC or notebook enabled with a Bluetooth device. It provides a convenient feature to attach your mouse when taking your notebook to office meetings.

Hardware Installation

1. Install two AA batteries in the mouse.
2. Stick-N-Go: attach the 'Click Mount' on your notebook in a convenient position first, then you can attach the mouse on your notebook as shown to avoid dropping your mouse.
3. Make sure that you have switched on the power switch underneath the mouse.

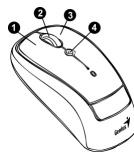


Software Installation

1. Make sure the mouse is connected to the computer.
2. Put the CD driver into the CD drive.
3. Choose and double click 'Mouse Driver' and follow the instructions to complete the 4D/8D installation.

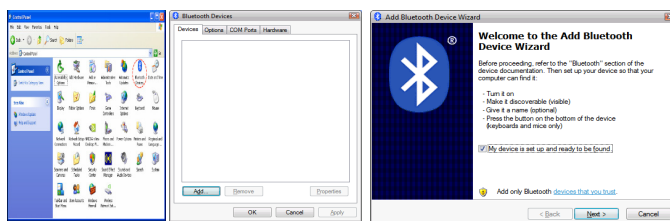
Factory Settings

1. **Left Button:** Provides traditional mouse functions like click, double click and drag.
2. **Magic-Roller:** Press the “Magic-Roller” to surf the Internet and Windows documents.
3. **Right Button:** Provides traditional mouse click functions.
4. **Flying Scroll:** Press and hold on to the button and move the mouse for multi-direction browsing. It provides more fun and convenience to office users in scrolling up, down, left, right or diagonally.

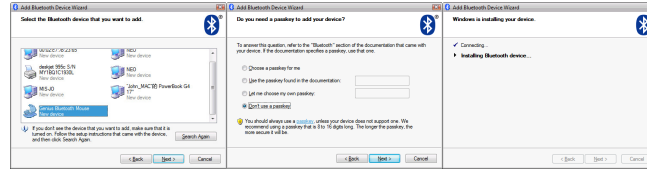


Pairing Process in Vista and Windows XP SP2

1. Open the Windows control panel, then select “Bluetooth devices”.
2. Click “Add....”
3. Select “My device is setup and ready to be found”, then click “Next”.

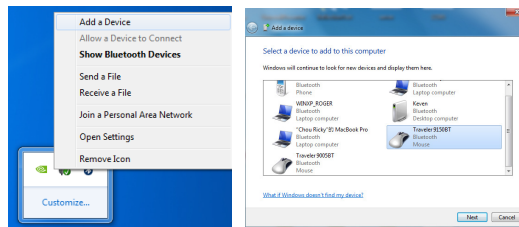


4. Press and hold the “CONNECT” button under the mouse.
5. In “Peripherals (Keyboards, mice, joysticks)”, select Genius Bluetooth Mouse and click “Next”.
6. Select “Don’t use a passkey” and click “Next”.
7. Windows will start to connect the Genius Bluetooth Mouse automatically. Press the finish button after the connection process is completed.

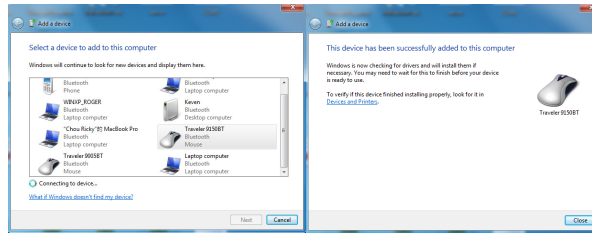


Pairing Process in Windows 7

1. Mouse over the Bluetooth device icon and click right button of mouse to open function list, then select “Add a Device”.
2. Press and hold the “CONNECT” button under the mouse.
3. Select Genius Bluetooth Mouse, then click “Next”.



4. Windows will start to connect the Genius Bluetooth Mouse automatically. Press the close button after the connection process is completed.



Once the connection between the Genius Bluetooth Mouse and your computer is established, the connection will be kept permanently. That means the connection will re-establish automatically each time you run Windows.

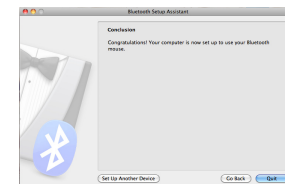
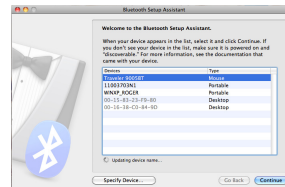
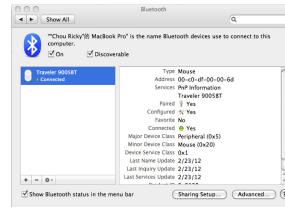
Pairing Process in Mac OS X 10.2.8 or later

1. Press and hold the “CONNECT” button under the mouse.
2. Click the Bluetooth icon on the task bar and select “Setup Bluetooth device”.
3. Click “Continue” when the “Bluetooth Setup Assistant” appears.
4. Choose “Mouse” and press “Continue” to the next step.
5. When Bluetooth finds the “Genius Bluetooth Mouse”, press “Continue” to the next step.

6. Click “Continue” when the “Passkey exchange with your mouse” appears.
7. The connection is now successful and you can use your Genius Bluetooth Mouse.

Pairing Process in Mac OS X 10.5 or later

1. Click the Bluetooth icon on the task bar and click plus sign to “Setup new device”.
2. Press and hold the “CONNECT” button under the mouse.
3. When Bluetooth finds the “Genius Bluetooth Mouse”, press “Continue” to the next step.
4. When Mac connects the Genius Bluetooth Mouse completely, press “Quit” and back to Bluetooth setup screen.

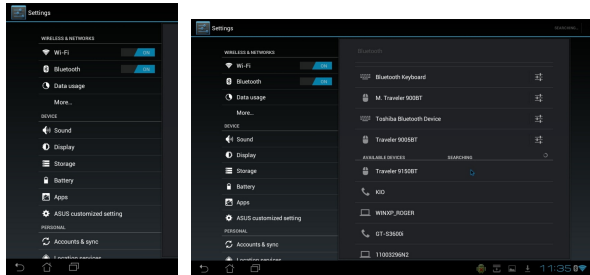


5. The connection is now successful and you can use your Genius Bluetooth Mouse.

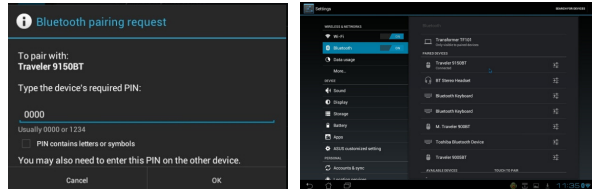
Now you can use the Genius Bluetooth Mouse wirelessly with a Bluetooth enabled Apple computer. Afterwards, the connection of the Genius Bluetooth mouse will re-establish automatically each time Mac OS X runs.

Pairing Process in Android 3.0 or later

1. Select the Bluetooth device icon.
2. Press and hold the “CONNECT” button under the mouse.



3. Android will start to connect the Genius Bluetooth Mouse automatically. Type PIN “0000” for the Genius Bluetooth Mouse to complete connection process.



4. The connection is now successful and you can use your Genius Bluetooth Mouse.

Remark:

- If not in use for a while, the Bluetooth Mouse will go into sleep mode. Move or click any button on the Bluetooth Mouse to wake it up, it takes less than three seconds for it to work again.
- If not in use for 30 minutes or longer, the Bluetooth Mouse will disconnect from your computer. Move or click any button on the Bluetooth Mouse for reconnection, it takes about six seconds for the mouse to start working normally.

FCC Compliance and Advisory Statement

This device complies with Part 15 of the FCC rules. Operation is subject to the following two conditions: (1) this device may not cause harmful interference, and (2) this device must accept any interference received, including interference that may cause undesired operation.

This equipment has been tested and found to comply with the limits for a Class B digital device, according to Part 15 of the FCC rules. These limits are designed to provide reasonable protection against harmful interference in a residential installation. This equipment generates, uses and can radiate radio frequency energy and if not installed and used in accordance with the instructions, may cause harmful interference to radio communications. However, there is no guarantee that interference will not occur in a particular installation. If this equipment does cause harmful interference to radio or television reception, which can be determined by turning the equipment off and on, the user is encouraged to try correct the interference by one or more of the following measures:

1. Reorient the receiving antenna.
 2. Increase the separation between the equipment and receiver.
 3. Connect the equipment into an outlet on a circuit different from that to which the receiver is connected.
 4. Consult the dealer or an experienced radio/TV technician for help.
- Any special accessories needed for compliance must be specified in the instruction manual.

Warning: A shielded-type power cord is required in order to meet FCC emission limits and also to prevent interference to the nearby radio and television reception. It is essential that only the supplied power cord be used. Use only shielded cables to connect I/O devices to this equipment.

CAUTION: Any changes or modifications not expressly approved by the party responsible for compliance could void your authority to operate the equipment.

IC statement This Class B digital apparatus complies with Canadian ICES-003. Cet appareil numérique de la classe B est conforme à la norme NMB-003 du Canada.