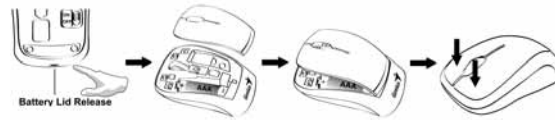


Hardware Installation

Note: Supports Windows 7/Vista/XP

1. You can connect the receiver to a USB port of a PC.
2. Install one AAA battery in the mouse.



3. Make sure that you have switched on the power switch underneath the mouse.
4. Stick-N-Go: attach the 'Click Mount' on your notebook in a convenient position first, then you can attach the mouse on your notebook as shown to avoid dropping your mouse.

Warning: (Troubleshooting)

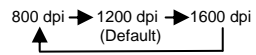
1. Do not use the wireless optical/laser mouse on a desk which is made of glass or mirror.
2. The connection of the wireless device is **factory preset**, so when you plug the USB receiver into any USB port, the connection between the micro receiver and the mouse **will be established automatically**.
3. In case your PC did not install the hardware successfully, remove the micro receiver from the USB port and go **Human Interface Devices** under **Device Manager** to remove the mouse then plug in the micro receiver to a USB port again.
4. If you feel the mouse does not move smooth as usual, it is possible the batteries have lost their charge so you need to replace them. Remember to put the batteries in the correct direction.

Factory Settings

1. **Left Button:** Provides traditional mouse functions like click, double click and drag.
2. **Magic-Roller:** Press the "Magic-Roller" to surf the Internet and Windows documents.
3. **Right Button:** Provides traditional mouse click functions.

DPI Resolution Adjustment

1. The default dpi resolution is 1200 dpi.
2. Press the left and right button together for three seconds and the resolution will switch from 1200 to 1600 dpi. Repeat this step each time and you can switch to 800 dpi, then to 1200 dpi, etc.

**Intelligent Power Saving Technology**

This mouse supports intelligent power saving technology. It saves battery power if you forget to use the power switch underneath the mouse to turn the power on or off.

1. The mouse will automatically go into power saving mode after ten seconds if no movement is detected.
2. The mouse will automatically go into power saving mode after six seconds if you remove the receiver from the USB port of the PC.

Note: Changes or modifications not expressly approved by the party responsible for compliance could void the user's authority to operate the equipment. (15.21)

This device complies with part 15 of the FCC Rules. Operation is subject to the following two conditions: (1) This device may not cause harmful interference, and (2) this device must accept any interference received, including interference that may cause undesired operation.(15.19(a)(3))