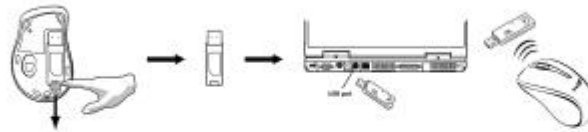


ENGLISH

Hardware Installation

1. You can connect the receiver to a USB port of a PC



2. Install one AA battery in the mouse.



3. Turn on your computer. The mouse will now work.

Note: Class 1 Laser Product. Passed eye-safety regulation (IEC 60825-1)

Warning: (Troubleshooting)

This device complies with Part 15 of the FCC rules, operation is subject to the following two conditions.

**(1) This device may not cause harmful interference and,
(2) This device must accept any interference received, including interference that may cause undesired operation .**

1. Please do not use wireless laser mouse on a desk, which is made of glass or mirror.
2. The wireless laser mouse channel provides 256 ID-codes, and it automatically selects the ID # for your mouse. You can only set up one wireless laser mouse at a time. But if you have additional wireless laser mouse sets in an area of 10 square meters, more interference will occur between the receiver and your mouse.
3. If you feel the mouse does not move smooth as usual, then the batteries have lost their charge, so please replace them. Remember do not put the batteries in the wrong direction.

