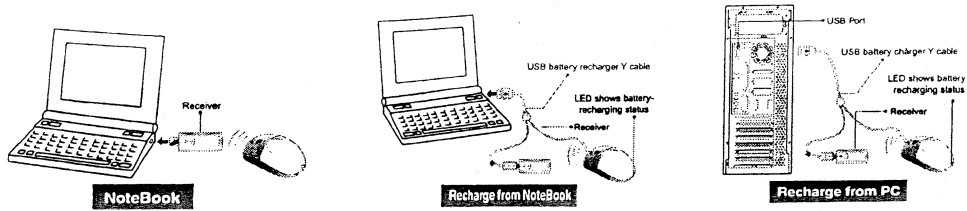
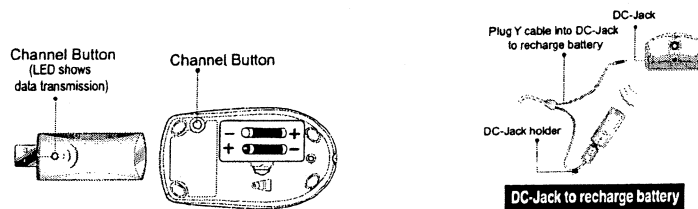


## Hardware Installation

1. You can connect the receiver to a USB port of either a PC or Notebook.



2. If you want to connect receiver to PC or recharge the batteries, please using the USB battery charger Y cable. **(Please do not connect the receiver directly to PC that was placed under a table, or you will get RF performance decreased easily.)**
3. Install two AAA rechargeable batteries in the mouse. **(Please do not put un-rechargeable batteries into mouse when you are charging the batteries that will make your mouse or main-board broken or burning!)**



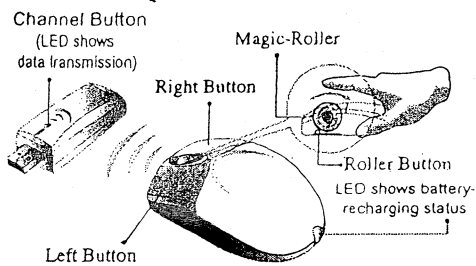
4. Turn on your computer.
5. After you open Windows, please press the button under the receiver first and then press the button under the mouse for channel setting. **Make sure each button press is for at least three seconds.**
6. First time you use this product, please run out of remains then recharge the batteries at least 12 to 16 hours.

### Warning:

1. Please do not use Wireless PowerScroll NBEye on a desk that is made of glass, mirror, iron, or black velvet. Also, a flat surface is necessary or the Optical Sensor could be error easily. When you use Wireless PowerScroll NBEye on a desk that is made of metal, try using a pad and reduce the receiving distance.
2. Before the first installation is completed (channel setting ready), the mouse will not work in DOS.
3. The Wireless PowerScroll NBEye channel provides 256 ID-codes, and it automatically selects the ID # for your mouse. You can only set up one Wireless PowerScroll NBEye at a time. But if you have additional Wireless PowerScroll NBEye sets in an area of 10 square meters, more interference will occur between the receiver and your mouse.
4. If you feel the mouse does not move smooth as usual, that the batteries have lost their charge, so please replace them or using the USB battery charger Y cable to recharging the batteries. The LED of mouse's tail shows battery-recharging status from shining to die out till battery full. **You should set up channel again every time you replace batteries.**
5. If you need to buy new batteries, please choose Ni-MH (Nickel-Metal-Hydride) batteries with AAA size, 550 to 700 mAh and 1.2 Voltages.

## Software Installation

1. Make sure the mouse is connected to the computer.
2. Put Setup the disk (or CD) into the disk drive.
3. Follow the instructions on the screen to finish the software installation.



- Magic-Roller** Press the "Magic-Roller" to surf the Internet and Windows documents
- Left Button** Provides traditional mouse functions such as click, double click and drag.
- Right Button** You can assign this button frequently used keyboard and mouse functions in addition to features like EasyJump, Auto-Panning, Zoom, etc.
- Roller Button** You can assign this button frequently used keyboard and mouse functions in addition to features like EasyJump, Auto-Panning, Zoom, etc.

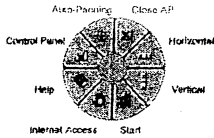
### MouseMate Software Features

- Browsing Speed** You can adjust the browsing speed when you surf the Internet or Windows documents.
- Browsing Direction** Move the "Magic-Roller" forward and the screen will browse to the top of the document. Move it in reverse and the document will go in the opposite direction
- Button Find** Automatically positions the cursor on the default button, usually the OK button, when the dialog box appears on your screen.
- Trails** This option makes it easier to find the cursor when using an LCD monitor. This option cannot be used if your monitor does not support it.
- Loop** When you move the cursor to the top (or bottom) of the screen, it will automatically move the cursor to the bottom (or top) of the screen.
- Mouse Speed** This function lets you adjust the speed at which the pointer moves across the screen.
- Double Click Speed** Use this function to set the double click speed of the mouse.
- Swap Left/Right** Select this option if you want to have the mouse operate with the right mouse button as the primary button.
- Pointers Folders** This lets you change the shape of the cursor.
- Office Mode** Only supports Microsoft Office 97 along with some new applications. Features include zoom, scrolling and Auto-scrolling features. It's similar to Microsoft's IntelliMouse.
- Genius Mode** Supports all applications that use scrollbars, including Office97, with zoom, Auto-panning, and scrolling functions.
- About** Click here to open the Genius Homepage "[www.geniusnet.com.tw](http://www.geniusnet.com.tw)"
- Orientation** This function lets you set the angle when you move the mouse upward.

It gives you a more comfortable angle when holding the mouse ball.

## EasyJump for Windows

EasyJump lets you open eight special functions quickly.



**Close AP** Close the application you are using.

**Horizontal** Moves the cursor to the horizontal scroll bar.

**Vertical** Moves the cursor to the vertical scroll bar.

**Start** Activates the Windows Start menu.

**Internet Access** This function opens Browser to access the Internet.

**Help** This opens the Help menu.

**Control Panel** Opens the mouse control panel.

**Auto-Panning** Move the mouse, and the document will move in the direction you move the mouse.

**Switch Applications** When the right-button or Magic-Roller is set to "Switch AP", you can quickly switch from one open application to another without moving the mouse. To switch to a specific application, press the the right button or the Magic-Roller to select the application.

### Zoom function for Office and IE Applications

Press the "Ctrl" key and move the "Magic-Roller" forward (or backward) to set the Zoom In/Out function. You can also use just one hand to Zoom In/Out: set the right button to be the "Ctrl" function, press the right button and move the "Magic-Roller" forward (or backward) to enlarge (or decrease) the document window.

### Auto-Panning

You can set this function in the Button Assignment menu. Move the mouse, and the document moves in the direction you just moved.

### Uninstall the software

Follow these instructions to remove the software from your hard disk. In Windows 95/98/NT, click on the Start button, select Programs and move to the mouse software. Then click on Uninstall software.

### Customize the software

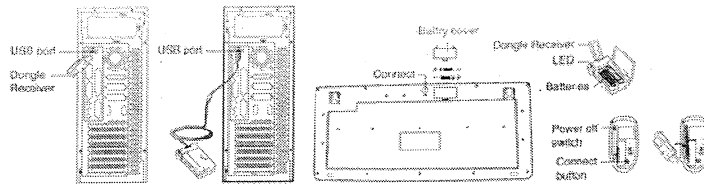
This section shows you how to customize the software. To open the software control panel, you can double-click on the icon in the task bar or select the "software" icon from the program group.

### Close the Software

Click the right button on the taskbar, and select "Close the software" to close the software

## Hardware Installation

1. Install two rechargeable AA batteries into the mouse and two AAA batteries into the keyboard.
2. Plug in your USB receiver to a USB port of your PC.
3. Turn on your PC.



## Software Installation

1. Place your CD driver in your PC drive for software installation
2. Follow the instruction on the screen to finish the software installation

## Replace Batteries

When your mouse or keyboard does not work properly, then the batteries have lost their charge, so please replace them. (Warning: please do not mix or use different types of batteries at the same time)

## ID Channel Setting

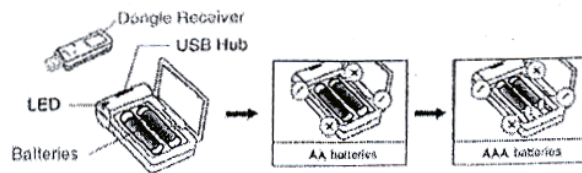
The channel ID is factory preset. The green LED (data transmission indicator) will be lit constantly when the wireless device is in normal operation. In case your wireless devices do not work, please reset the ID channel by:

1. Press the connect button on the receiver and the light will be blinking for connection.
2. Press the connect buttons of the keyboard and mouse within 20 seconds.
3. To confirm the connection of the wireless devices, the LED light will be lit constantly for approximately three seconds and will turn off after being connected.

## Charger and charging usage

1. The charger device can be used to recharge both AA and AAA batteries; **two batteries** must be charged simultaneously.
2. Make sure that only rechargeable batteries (NiMH~Nickle-Metal-Hydride) batteries are used and placed in the correct position.
3. For safety, the charger features a **recognition function** for alkaline batteries placed and/or when the batteries are not placed in the correct polarity direction; resulting in charger's LED Light to **blink between green and red** to indicate a warning.

4. THE LED will be red in charging mode and green when batteries are fully charged.
5. The Hub on the charger is designed for a dongle receiver or other USB accessories (such as mouse, flash memory stick).



### Warning (Trouble shooting)

1. Please do not use the wireless optical mouse on a surface that is made of glass, iron, black velvet or a desk that is made of metal, as they will reduce the operational distance of the keyboard and mouse.
2. The wireless desktop set provides 256 ID codes, and it selects the ID # for your wireless devices. You can only set up one wireless desktop at a time. When you have another 27Mhz wireless desktop set within 10 square meters, there may be interference between the wireless devices.
3. The wireless mouse uses an IR sensor and *no light* will be shown just like an ordinary optical mouse.
4. You need to place **two AA or AAA** rechargeable batteries simultaneously in the charger for it to charge correctly.
5. Please do not mix or use different types of batteries in the battery charger such as Li-ion, NiCd, Alkaline, etc.
6. The charging current of the charger is approximately 210mA; please connect the charger device directly to a PC or a safe power device (HUB device with power adaptor).

### Notes on Battery Usage

When you use the battery, carefully read and strictly observe the **Safety Instructions** and the notes described below:

- Different battery types and surrounding temperatures may affect the battery performance.
- Avoid using batteries in extremely cold environments as low temperatures can shorten the battery life and reduce wireless device performance.
- If you are using the new rechargeable battery or rechargeable battery that has not been used for an extended period of time (batteries that pass the expiry date are exceptions) might affect the number of pictures that can be taken. Therefore, to maximize their performance and lifetime, we recommend that you fully charge the batteries and discharge them for at least one complete cycle before use.
- The battery may feel warm when using the wireless device for an extended period of time or using the flash continuously. This is normal and not a malfunction.
- The wireless device may feel warm when being used continuously or for an extended period of time. This is normal and not a malfunction.
- If you will not be using the batteries for an extended period of time, remove them from the wireless device to prevent leakage or corrosion.
- Always keep the terminals in a clean state.
- Never use manganese batteries.
- Risk of explosion if battery is replaced by an incorrect type.
- Dispose of used batteries according to the instructions.

**This device complies with part 15 of the FCC rules.**

**Operation is subject to the following two conditions.**

**(1) This device may not cause harmful interference, and**

**(2) This device must accept any interference received,  
including interference that may cause undesired operation.**

**Per FCC 15.21, you are cautioned that changes or modifications  
not expressly approved by the part responsible for compliance  
could void the user's authority to operate the equipment.**