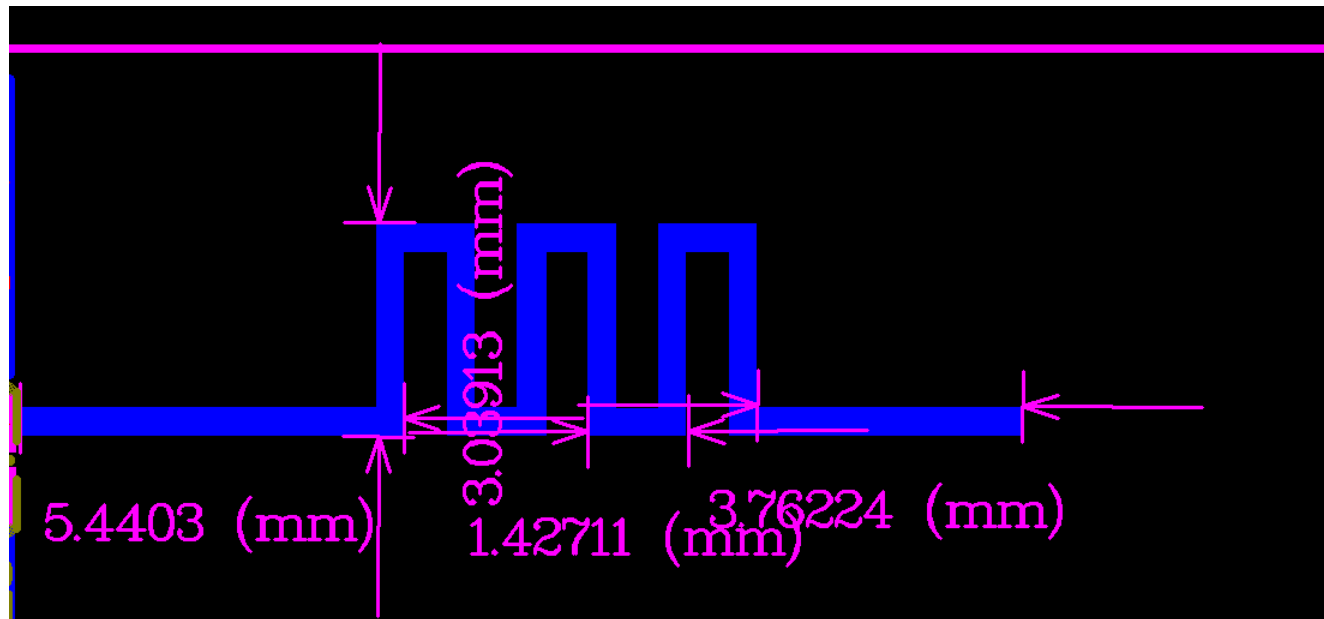
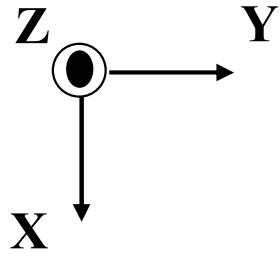


PCB Antenna Simulation

PCB Antenna pattern

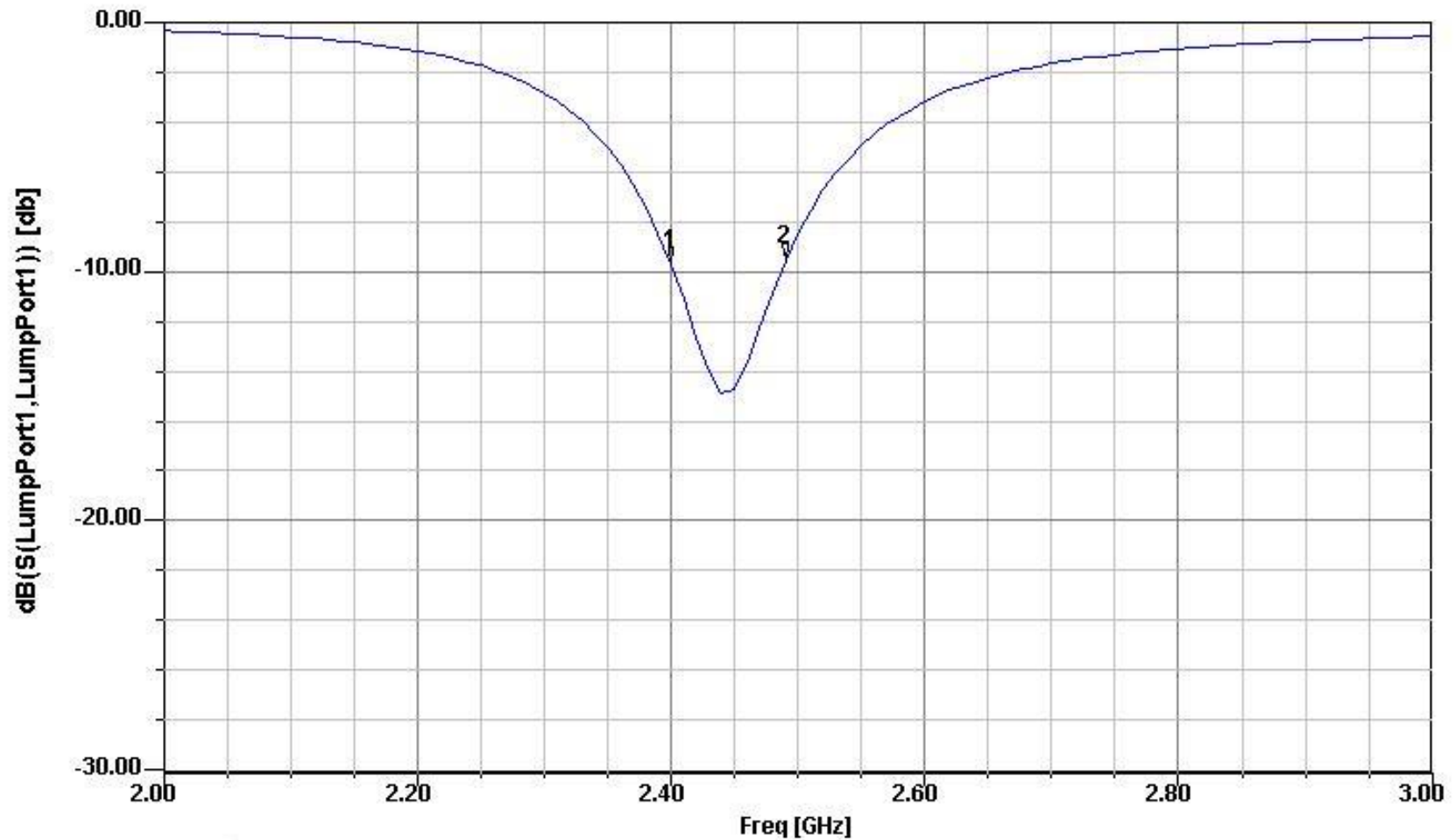


PCB Antenna Simulation

(S11)

Ansoft Corporation
XY Plot 1
HFSSDesign1

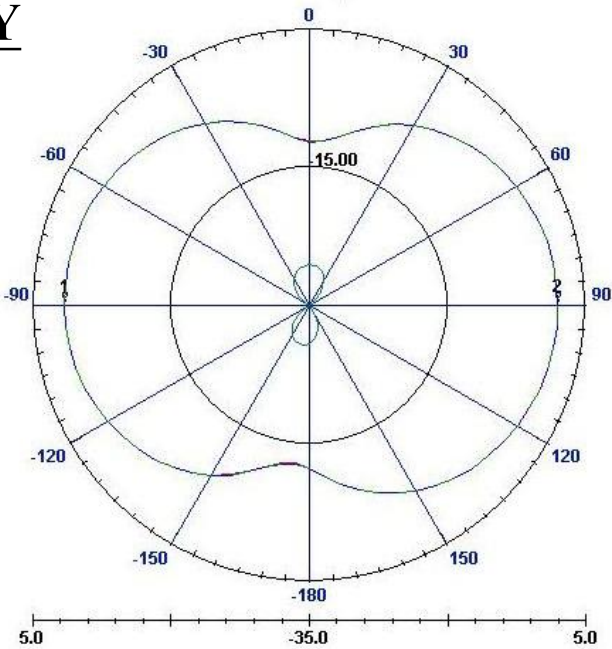
BW(RL<10dB): 90 MHz



X1= 2.40GHz	X2= 2.49GHz
Y1= -9.70	Y2= -9.58

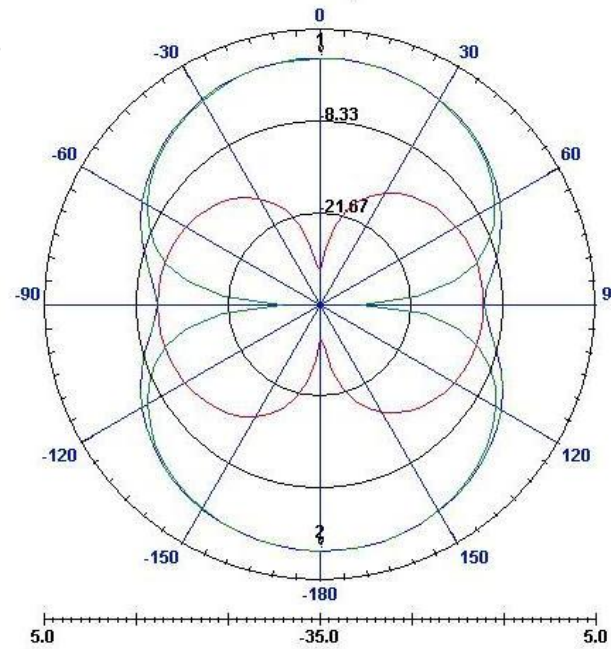
PCB Antenna Simulation (Radiation)

XY



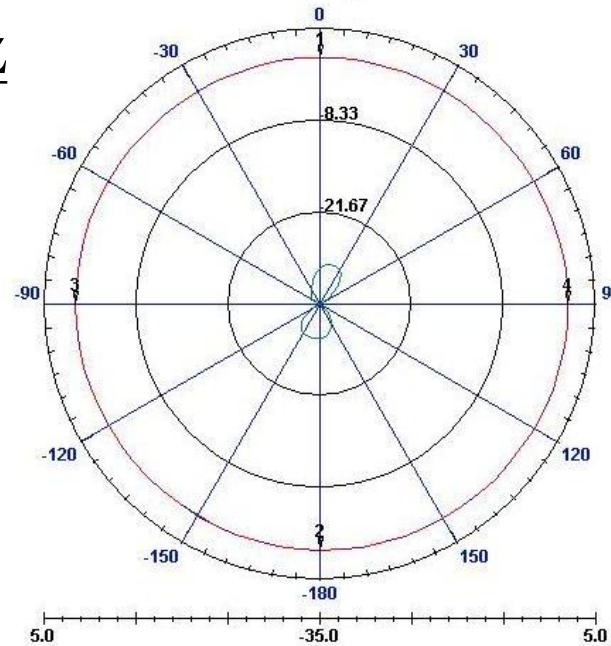
M1= 0.458
P1= 270.000
270.000deg
M2= 0.944
P2= 90.000
90.000deg

XZ



M1= 0.753
P1= 0.000
0.000deg
M2= 0.655
P2= 180.000
180.000deg

YZ



M1= 0.753
P1= 360.000
360.000deg
M2= 0.655
P2= 180.000
180.000deg
M3= 0.458
P3= 270.000
270.000deg
M4= 0.944
P4= 90.000
90.000deg

Efficiency: 76%

Gain: -1.2 dBi