

**EUT : JOYSTICK**

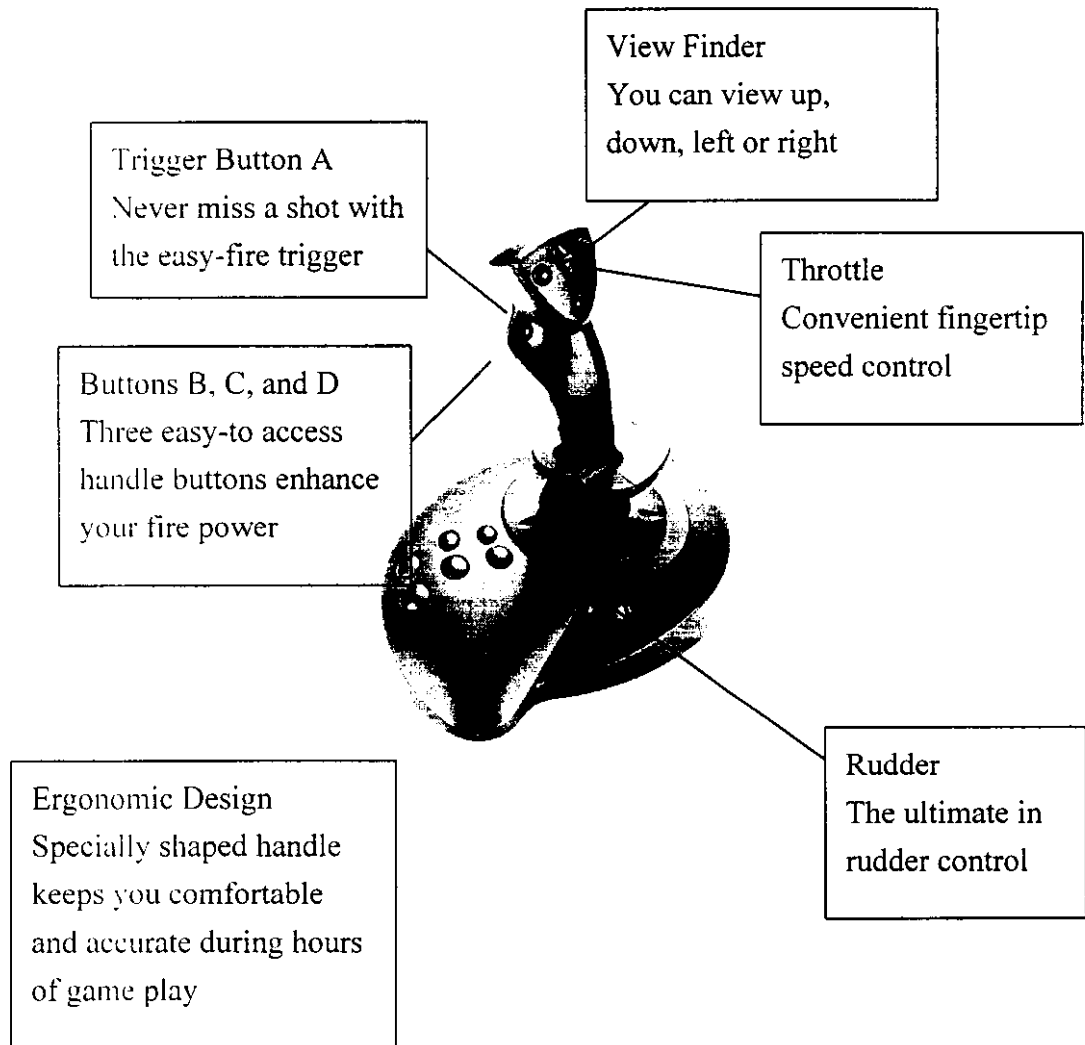
**FCC ID : FSUGJUSBF30D**

**KYE SYSTEMS CORP.**

**USER'S MANUAL**

*In the default setting of "Profile Selection"*

1. Select the "Profile Selection".
2. You will find the default setting on the screen and you can begin playing your game.
3. If you want to change the default setting, choose the button to represent a keyboard action.
4. Select "File" to save your setting.



*System Requirements:*

- IBM PC compatible, with Pentium 133 or higher
- Windows 98
- USB port

*Package Contents:*

- USB F-30D joystick
- Genius software
- Multi-language quick installation guide

## MaxFighter Digital USB F-30D

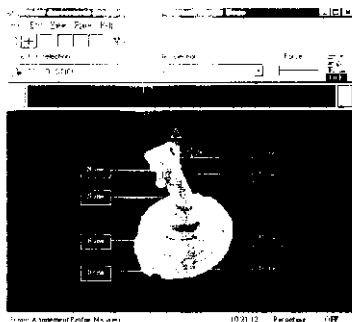
### The Unstoppable Attacker

- **100% digital** – laser like precision
- **10 programmable buttons** maximize your power
- **Macros provide quicker functions** for absolute control
- **Digital throttle & base rudder** enhance high speed and accuracy
- **Ergonomic design** – more fun, no fatigue
- **Sturdy base and suction stops** for complete stability
- **Convenient hot Plug & Play features** for USB F-30D

### The Unstoppable Attacker

The MaxFighter Digital USB F-30D, one of the coolest of Genius Joysticks, can operate in both Analog and Digital modes. Its 10-programmable button functions, Digital-Control-Analog Throttle, View Finder Hat Switch, and Base Rudder will give you the speed and accuracy to meet the challenges of any game. You can program your best moves to the trigger and the six additional buttons on the base. It will give you explosive power to make every game YOUR game!

### Genius Amusement Profile Manager



You can assign a game action to one of the USB F-30D joystick buttons using the Genius Amusement Profile Manager. You can assign the function by yourself or use the default setting in “Profile Selection” of the software.

#### To assign a game action to a button:

1. Choose the button which definition is “**None**” to represent a keyboard action.
2. Select “File” and “Save As “ to save your setting.

Note: If you want to delete the setting of one button, please try to use your mouse to make the range you want to destroy and press delete key. Remember do not use backspace key.

## **FEDERAL COMMUNICATIONS COMMISSION**

This device complies with Part 15 of the FCC Rules. Operation is subject to the following two conditions:(1) this device may not cause harmful interference, and (2) this device must accept any interference received, including interference that may cause undesired operation.

### **NOTE**

This equipment has been tested and found to comply with the limits for a Class B digital device, pursuant to Part 15 of the FCC Rules. These limits are designed to provide reasonable protection. This equipment generates, uses and can radiated radio frequency energy and, if not installed and used in accordance with the instructions, may cause harmful interference to radio communications. However, there is no guarantee that interference will not occur in a particular installation. If this equipment does cause harmful interference to radio or television reception, which can be determined by turning the equipment off and on, the user is encouraged to try to correct the interference by one or more of the following measures:

- Reorient or relocate the receiving antenna.
- Increase the separation between the equipment and receiver.
- Connect the equipment into an outlet on a circuit different from that to which the receiver is connected.
- Consult the dealer or an experienced radio/TV technician for help.

Shielded interface cables must be used in order to comply with emission limits.

Changes or modifications not expressly approved by the party responsible for compliance could void the user's authority to operate the equipment.