

EUT : GAME PAD

FCC ID : FSUGJ0001

KYE SYSTEMS CORP.

USER'S MANUAL

EXHIBIT

MaxFire Motion Sensor G-12 USB Game Pad User's Guide

Before you installation

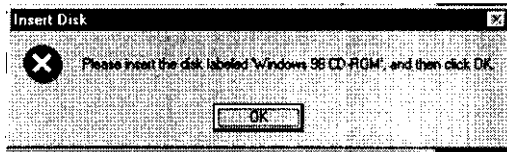
Check your system must have the following:

- IBM™-Compatible PC, with Pentium® processor or faster
- 16MB RAM minimum
- 10MB hard-disk space
- CD-ROM Drive
- One dedicated USB port
- Windows® 98
- An installed mouse

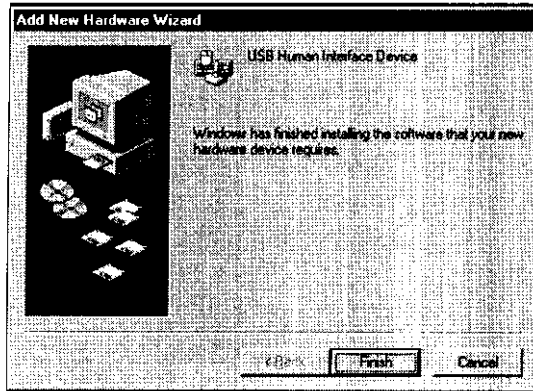
Check you must have the following:

- MaxFire Motion Sensor G-12 USB Game Pad
- Windows® 98 CD

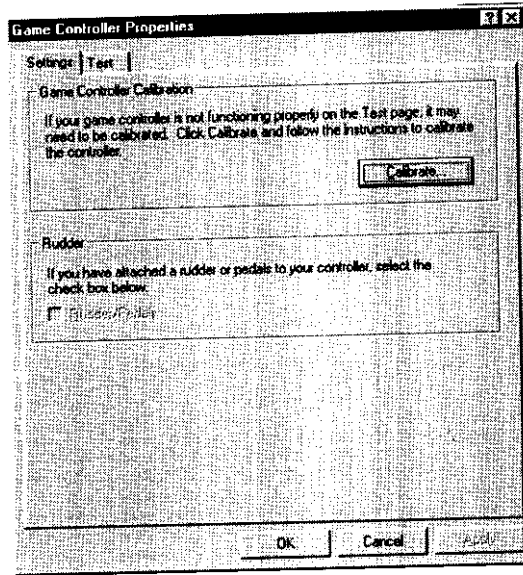
5. Insert the Windows® 98 CD into the CD-ROM drive of your computer, and click **OK**.



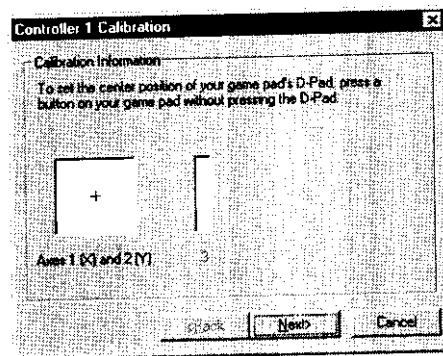
6. Click **Finish** to complete MaxFire Motion Sensor G-12 USB game pad installation.



4. Click **Calibrate**.



5. Follow the on-screen instructions to complete game pad calibration.



6. When you complete game pad calibration, you can chose **Test** menu and test calibration result.

