



Knowledge • Yield • Excellence

Genius web : [www.geniusnet.com](http://www.geniusnet.com)  
OEM/ODM : [www.kyecom.com](http://www.kyecom.com)

#### KYE Systems Corp.

No. 492, Sec. 5, Chung Hsin Rd.,  
San Chung, Taipei Hsien,  
241, Taiwan  
Tel : (886) 2 2995 6645  
Fax: (886) 2 2995 6649  
<http://www.geniusnet.com>

#### KYE Systems America Corporation

North & Latin America  
1301 N.W. 84th Avenue, Suite#127,  
Miami, FL 33126 U.S.A.  
Tel: 1-305-468-9250  
Fax: 1-305-468-9251  
<http://www.genius-kye.com>

#### KYE Systems Europe GmbH

Karl-Benz-Straße 9  
D-40764 Langenfeld, Germany  
Tel: +49-2173-9743-0  
+49-2173-9743-21 (Tech. Support)  
Fax: +49-2173-9743-17  
<http://www.genius-europe.com>  
[genius@genius-europe.com](mailto:genius@genius-europe.com)

#### KYE Systems UK Ltd.

Unit 4, 131 Beddington Lane,  
Croydon, Surrey,  
CR0 4TD, UK  
Tel : (44) 208 664 2727 (sales)  
(44) 208 664 2710 (Tech. Support)  
Fax: (44) 208 664 2721 (sales)  
(44) 208 664 2747 (Tech. Support)  
<http://www.geniusnet.co.uk>

#### KYE Systems H.K. Corp. Ltd.

Unit 1701, 17th Floor, Aitken Vanson Centre,  
No. 61 Hoi Yuen Road,  
Kwun Tong, Kowloon, Hong Kong  
Tel: (852) 2342 3813  
Fax: (852) 2341 9517  
<http://www.geniusnet.com.hk>

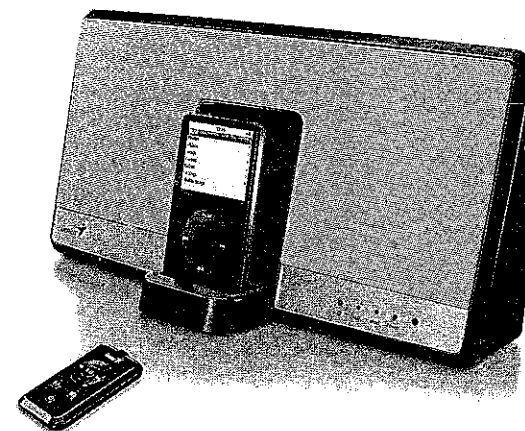
#### Genius Technology (SHENZHEN) CO., Ltd.

C2/Room, 20/F,C Block,  
Electronics Science & Technology Building 2070  
Shennan Road Middle, ShenZhen, P.R. China  
Tel: 0755 8329 6609  
Fax: 0755 8300 5790  
<http://www.geniusnet.com.cn>



# iTempo™ 800BT

Digital Audio System for iPod & Mobile Music



## User's Manual

English/Русский/Deutsch/Français/  
Italiano/Español/Brasil/Português/  
Nederlands/Česky/Polski/Magyar/  
Srpski/Türkçe/عربي/Ελληνικά/  
Română/Eesti/Latviešu/Lietuviškai/  
Қазақ/

**Precautions**

A. Safety

- Unplug the unit from the wall outlet if you do not intend to use it for an extended period of time. To disconnect the cord, pull it out by the plug, never by the cord

B. Installation Guidelines

- Avoid exposing the speaker system to environments that are excessively warm and humid (particularly in unventilated spaces or nearby heaters) or dusty.
- Do not set speaker system near windows exposed to direct sunlight or in areas prone to water seepage.
- Do not install the unit in an inclined position. It is designed to be operated in a horizontal position only.
- Avoid excessive vibration of speaker system.
- Clean speaker housing by wiping with mild cleaning solution. Do not use solvents!
- The speaker incorporates an efficient anti-magnetic architecture, permitting use in close proximity to most television screens. If the use of your speaker cause distortions in your television screen colors, try the following:

Turn off and unplug your television, turn on the speaker. After waiting 15 to 30 minutes, turn the television on and increase the distance between screen and speaker until distortion disappears. Also, note whether other magnetic emission sources are in the immediate vicinity. If so, relocate so as to prevent screen distortion.

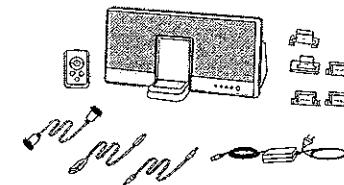
- **WARNING:** Before connecting or disconnecting any cables, make sure that the speaker is under power off and the power plug is unplugged from the power wall outlet and not receiving power

C. Notes

- iTempo is a trademark of KYE SYSTEMS CORP. All rights reserved.
- All specifications subject to change without prior notice.

**Package contents:**

- 1 iTempo™ 800BT
2. Wireless remote control
3. International voltage DC power adapter (100-240V)
- 4 Five dock cradles
5. One Stereo cable
- 6 One USB data cable
- 7 One S-Video cable

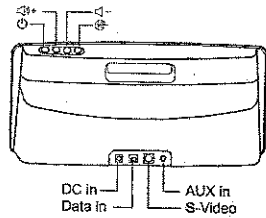
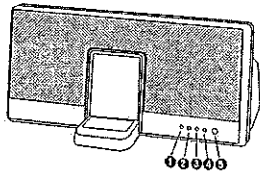


**Specifications:**

- RMS: 20 Watts
- Driver Unit: Two 70mm full range drivers
- Frequency Response (THD10%): 20Hz~20KHz
- S/N ratio: >75 dB
- Bluetooth v1.2 class 2; A2DP profile support
- Effective distance up to 30 feet
- Power Source: International voltage DC power adapter (100-240V)
- Wireless remote control: Power/Standby, Volume up/down, Play/Pause, Mute, Track Forward/Track Back and source mode
- Dimensions (WxHxD): 350 x 182 x 131 mm
- iPod not included

**LED Indicators:**

- 1 Bluetooth indicator
- 2 AUX in indicator: music source is from MP3 or other stereo devices.
- 3 iPod indicator
- 4 Power indicator
- 5 IR sensor



**Connecting to power**

- 1 Insert the connector into the jack on the back of the system.
- 2 Plug the other end of the power cable into a wall outlet.

**Functions:**

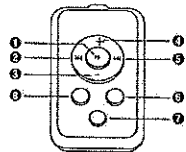
- 1 Turn on the speaker system by pushing the power button located on top of the unit.
- 2 The and buttons on the top of the system allow you to adjust the volume.
- 3 The source mode allows you to select the audio source from either the Bluetooth , iPod or other stereo devices like MP3 or CD from AUX in

**Connections:**

- 1 **DC in:** Insert the connector into the jack on the back of the system and plug the other end of this cable into a suitable wall outlet.
- 2 **Data in:** To download files or music from PC or notebook to iPod, please insert the smaller plug of the USB cable into the DATA IN socket on the back of system and the other one into the USB port of a PC or notebook.
- 3 **S-Video output jack:** To display photos or video from iPod photo/video onto a television set or VCR, please connect one end of the S-Video cable to the S-Video port on the back of the speaker system and the other end to the S-Video port on the television set or VCR.
- 4 **AUX in:** Connect the 3.5mm stereo cable to listen other stereo devices like a MP3 or CD.

**Remote control:**

- |                 |                   |
|-----------------|-------------------|
| 1  Play/Pause   | 5.  Track Forward |
| 2  Track Back   | 6.  Mute          |
| 3.  Volume down | 7  Power          |
| 4  Volume up    | 8.  Source mode   |



**Listen to music from cellular phone with A2DP built-in**

**Bluetooth Speaker Operation**

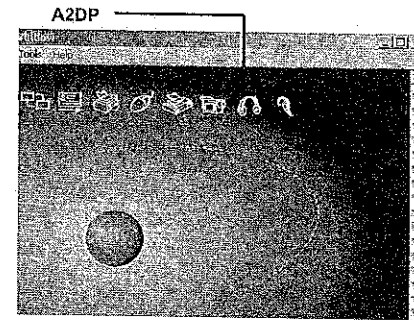
This Bluetooth Speaker System is designed to be compatible with Bluetooth transmitter devices, such as mobiles, Notebooks and Bluetooth dongles, etc., which have A2DP built-in.

- 1 Press the power button to turn on the speaker system, and the POWER indicator will light.
- 2 Press the source mode to select the function, and the indicator will light if the function is selected.
- 3 Press the source mode to select the Bluetooth function , and the indicator will flash quickly. After the connection of the speaker system and the Bluetooth device, the Bluetooth indicator will always be lit.
- 4 Turn on the audio source.
- 5 Push the VOLUME + / - button to increase or decrease the volume level.
- 6 To turn off the speaker system, push the power button to turn off and the indicator light will turn off

**Pairing Step**

- 1 Please choose the device name "GENIUS" and enter the pass key "0000" to establish a pairing connection.
- 2 Since connecting, the indicator will flash quickly then the light will remain on when connected. If the pairing cannot be established within 3 minutes, you will be in idle mode and the indicator will flash slowly (once every 2 seconds). A re-pairing procedure is needed. Press the source mode again to select the Bluetooth function , and repeat step 1

- For IVT Bluetooth Driver via USB Dongle (connecting with PC or notebook)



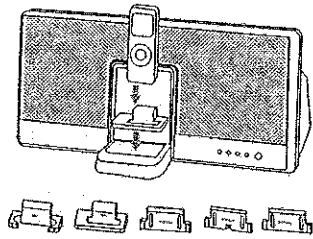
**Listen to music from the iPod**

**Using the correct cradle**

Before you enjoy iPod music with iTempo™ 800BT, you need to install the proper cradle in the dock on the front of the system. To install the proper cradle:

- 1 Check the model of each cradle that is suitable for your iPod
2. Use the correct cradle to ensure a proper fit for your iPod
3. Position the selected cradle over the dock
4. You can remove and replace this cradle with the other cradles that are provided, which allows you to use the system with iPods of different sizes.

## ENGLISH



iPod model	Cradle selection
iPod nano	nano
iPod nano (2 generation)	
iPod mini	mini
iPod 30GB Video	30GB Video
iPod with color display (20, 30, 40, 60GB)	
iPod 10GB - 15GB	60GB Video
iPod 60GB Video	
iPod 60GB Audio	60GB
iPod 30, 40, 60GB	

### Note:

- 1 Whenever your iPod is docked in the system, it recharges.
- 2 When earphones are plugged into iPod, sound comes from both earphones and the system.
- 3 iPod navigation controls are fully functional while iPod is docked in the system.
- 4 The iPod volume wheel only controls the headphone volume and can not control the speaker system

### Troubleshooting:

Possible Problem	Solution
No power	<ul style="list-style-type: none"> <li>• Make sure the power cable is plugged into a functioning wall outlet and plug the power cable connector into the power supply jack on the back of the iTempo 800BT.</li> <li>• Press the power button on the top of the system and LED will turn on to red.</li> </ul>
No sound from speakers	<ul style="list-style-type: none"> <li>• Make sure the power cable is plugged into a functioning wall outlet, system power is on, iPod is inserted properly, turned on and playing.</li> <li>• Make sure the USB cable is unplugged from the system.</li> <li>• Press play button on the remote control</li> <li>• Make sure iPod is running proper software. Check <a href="http://www.apple.com/iPod/download">www.apple.com/iPod/download</a> for more details.</li> <li>• If connecting to other audio devices like a MP3 or CD player using a 3.5mm stereo cable, make sure the source mode is under AUX IN and the stereo cable is inserted firmly into the correct jack.</li> </ul>
No sound and iPod is not charging	<ul style="list-style-type: none"> <li>• Make sure the power cable is plugged into a functioning wall outlet.</li> <li>• Make sure iPod is inserted firmly in the dock.</li> </ul>
Radio interference	<ul style="list-style-type: none"> <li>• Make sure the speaker system is not too close to a radio tower.</li> </ul>
Remote control doesn't work	<ul style="list-style-type: none"> <li>• Check the remote control battery is in correct position.</li> <li>• Replace the remote control battery.</li> </ul>

## FCC Interference Statement

This equipment has been tested and found to comply with the limits for a class B digital device, pursuant to part 15 of the FCC Rules. These limits are designed to provide reasonable protection against harmful interference in a residential installation. □ □

This equipment generates, uses and can radiate radio frequency energy and, if not installed and used in accordance with the instructions, may cause harmful interference to radio communications. However, there is no guarantee that interference will not occur in a particular installation. If this equipment does cause harmful interference to radio or television reception, which can be determined by turning the equipment off and on, the user is encouraged to try to correct the interference by one or more of the following measures: □ □

---Reorient or relocate the receiving antenna. □ □

---Increase the separation between the equipment and receiver. □ □

---Connect the equipment into an outlet on a circuit different from that to which the receiver is connected. □ □

---Consult the dealer or an experienced radio/TV technician for help. □ □

### Caution:

1. The device complies with Part 15 of the FCC rules. Operation is subject to the following two conditions:

(1) This device may not cause harmful interference.

(2) This device must accept any interference received, including interference that may cause undesired operation.

2. This Transmitter must not be co-located or operating in conjunction with any other antenna or transmitter.

3. Changes or modifications to this unit not expressly approved by the party responsible for compliance could void the user authority to operate the equipment.