

USER OPERATION MANUAL - ENGLISH

>> System Requirement :

Microsoft Windows ME/2000/XP

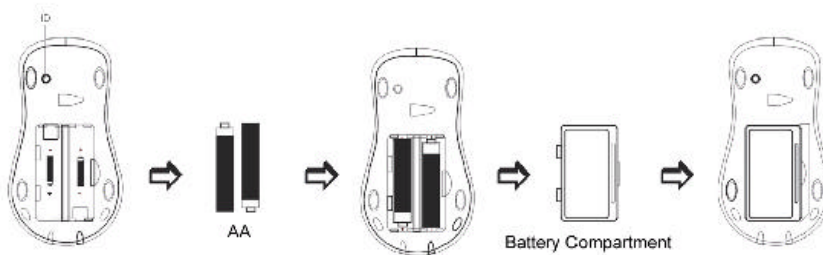
Note : The RF mouse is with 27Mhz radio frequency and work fine without any driver. If the computer is installed other driver already, please remove it to make sure the mouse work normally

>> Insert the Battery

Whenever you insert batteries, always make sure both of them are new.

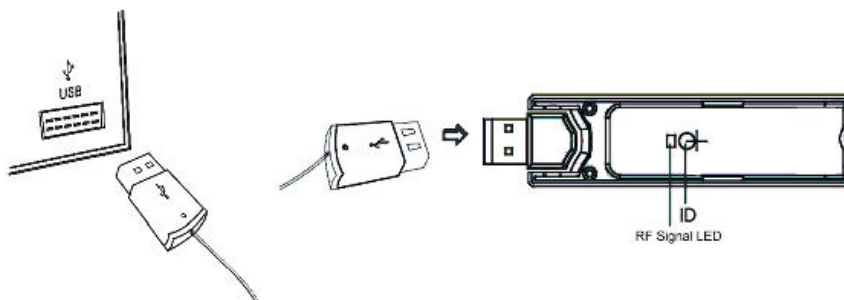
Alkaline batteries are recommended, and two (AA) alkaline batteries are included in the package.

1. Turn the mouse upside down and remove the battery compartment cover.
2. Regarding the drawing (+. -) in the battery box and insert the batteries into it.
3. Close the battery compartment cover.



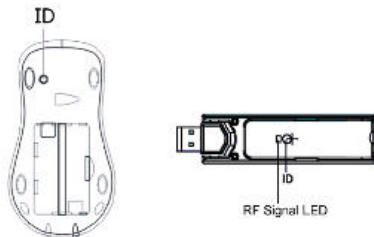
>> Connect the Receiver to the Computer

1. Turn on your computer.
2. Plug the rectangular USB receiver into your computer's USB port.



>> Set up the ID code

1. Press the ID button on the Receiver for 2 secs. The receiver light blinks indicate that it is in " connect " mode.
2. Press the ID button on the bottom of the Mouse, then the Light on receiver will be flash quicker, it will catch the Mouse ID automatically and be set up ready.

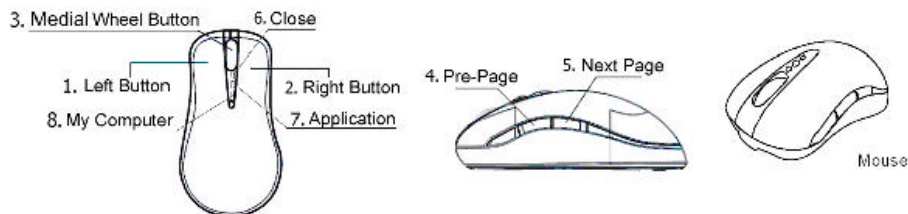


Remark :

1. 256 sets of ID code are chosen at random. If you change the battery, please set up the ID code again.
2. If you have two or more RF mouse work in the same time to one PC, you need to reset the ID code again in one of them.

>> Mouse Function Introduction :

8Key Optical Mouse



1. Left Button
2. Right Button
3. Medial Button & Wheel
4. Pre-Page Button
5. Next Page Button
6. Close Button
7. Application Switch Button
8. My Computer Button

Notice: The changes or modifications not expressly approved by the party responsible
For compliance could void the user's authority to operate the equipment.

Important Note: To comply with the FCC RF exposure compliance requirements, no
change to the antenna or the device is permitted. Any change to the
antenna or the device could result in the device exceeding the RF
exposure requirements and void user's authority to operate the device.

FCC INFORMATION

The Federal Communication Commission Radio Frequency Interference
Statement includes the following paragraph:

The equipment has been tested and found to comply with the limits for a Class
B Digital Device, pursuant to part 15 of the FCC Rules. These limits are designed
to provide reasonable protection against harmful interference in a residential
installation. This equipment generates, uses and can radiate radio frequency
energy and, if not installed and used in accordance with the instruction, may cause
harmful interference to radio communication. However, there is no grantee that
interference will not occur in a particular installation. If this equipment does cause
harmful interference to radio or television reception, which can be determined by
turning the equipment off and on, the user is encouraged to try to correct the
interference by one or more of the following measures:

- Reorient or relocate the receiving antenna.
- Increase the separation between the equipment and receiver.
- Connect the equipment into an outlet on a circuit different from that to which the
receiver is connected.
- Consult the dealer or an experienced radio/TV technician for help.

The user should not modify or change this equipment without written approval
Form FOCUS ELECTRONIC CO., LTD. Modification could void authority to use this
equipment.

This device complies with Part 15 of the FCC Rules. Operation is subject to the
following two conditions: (1) this device may not cause harmful interference, and
(2) this device must accept any interference received, including interference that
may cause undesired operation.