

D

C

B

A

D

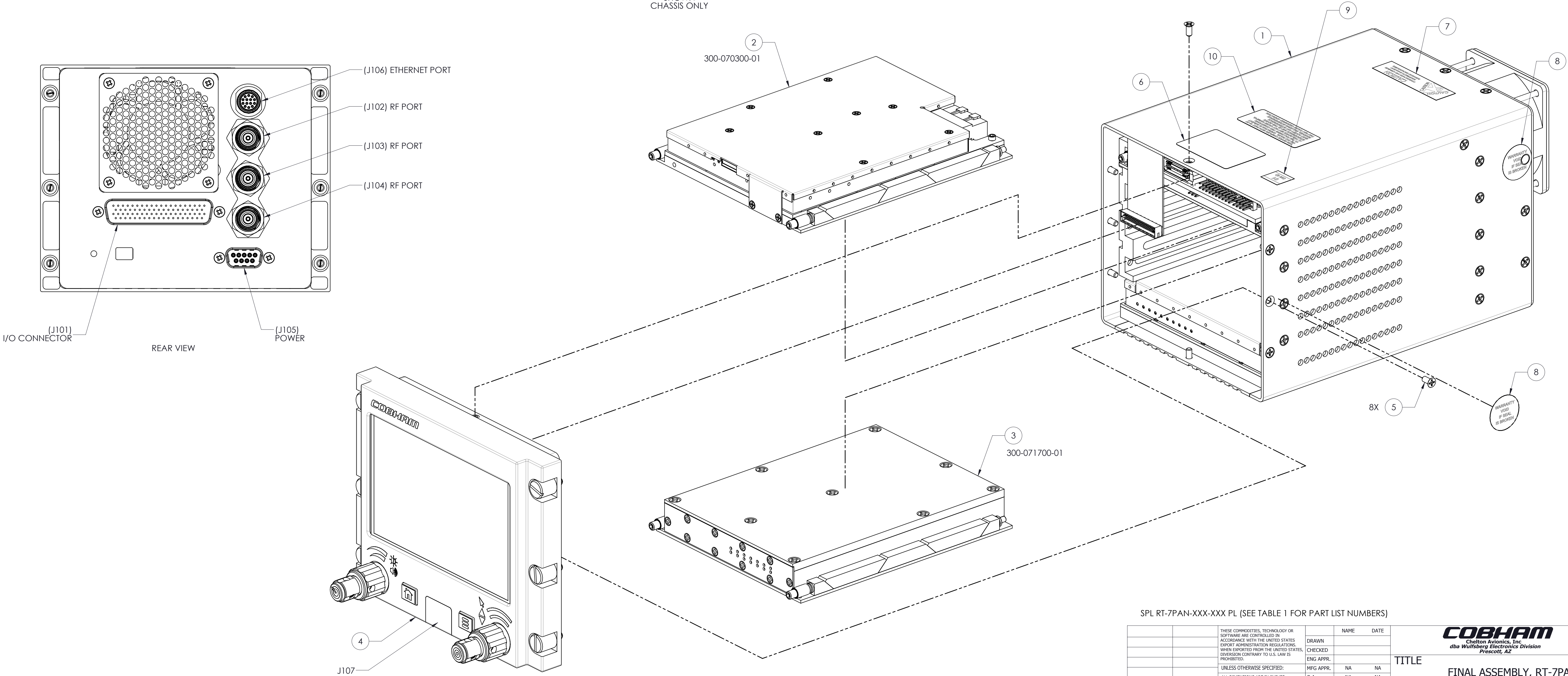
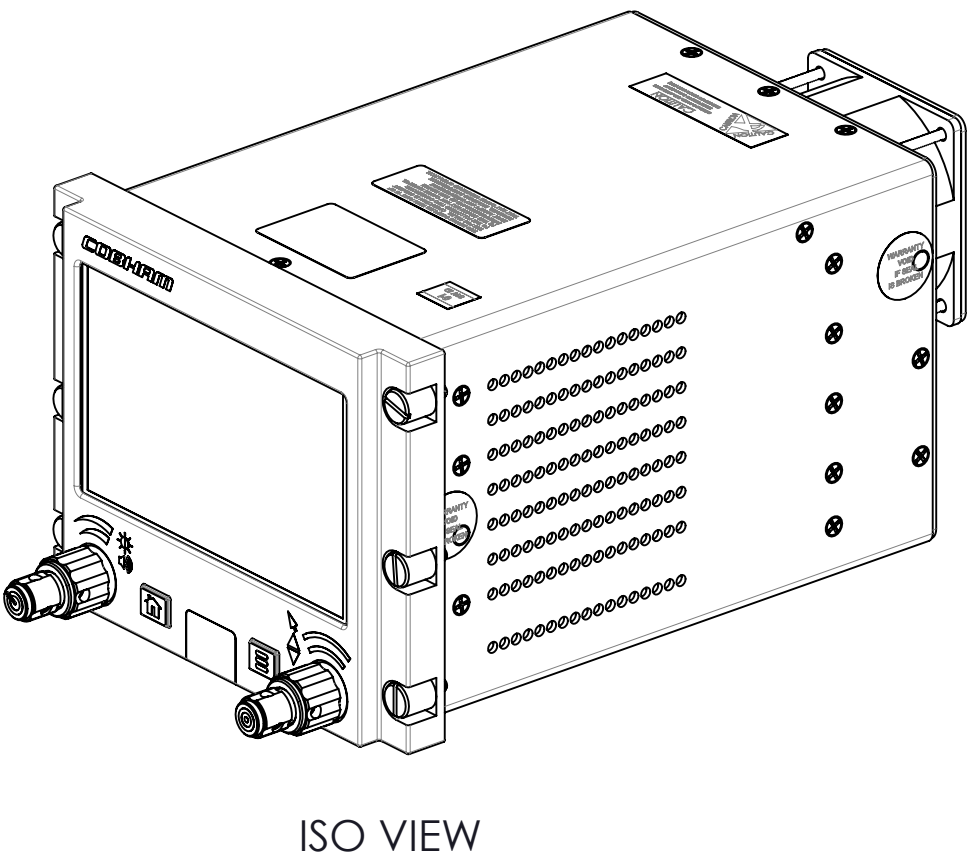
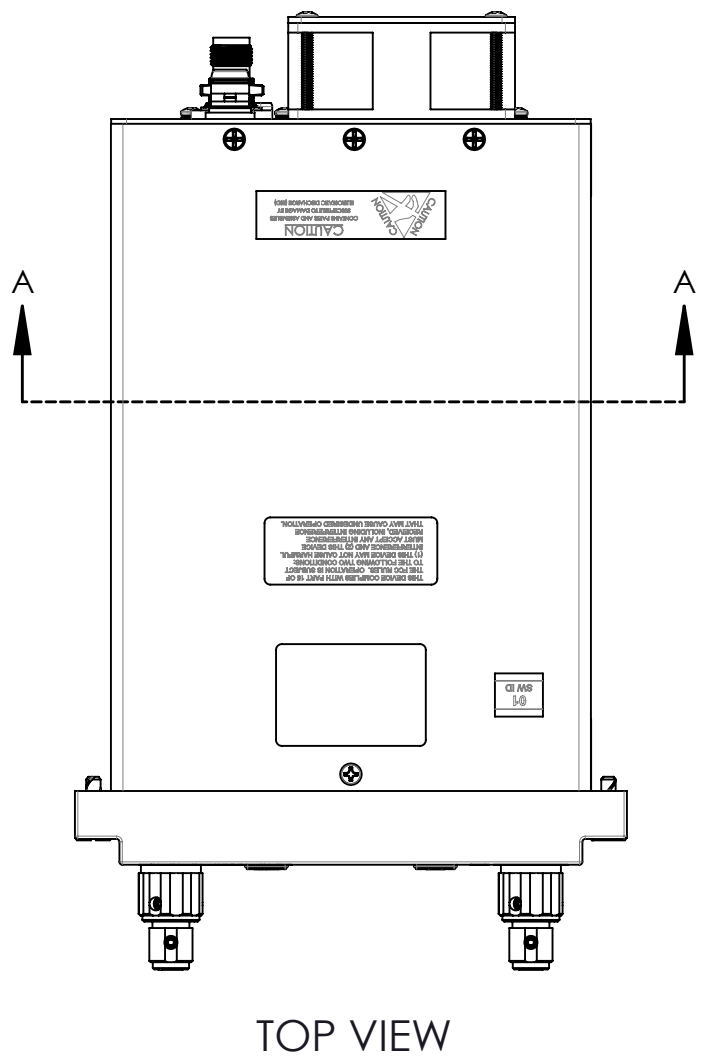
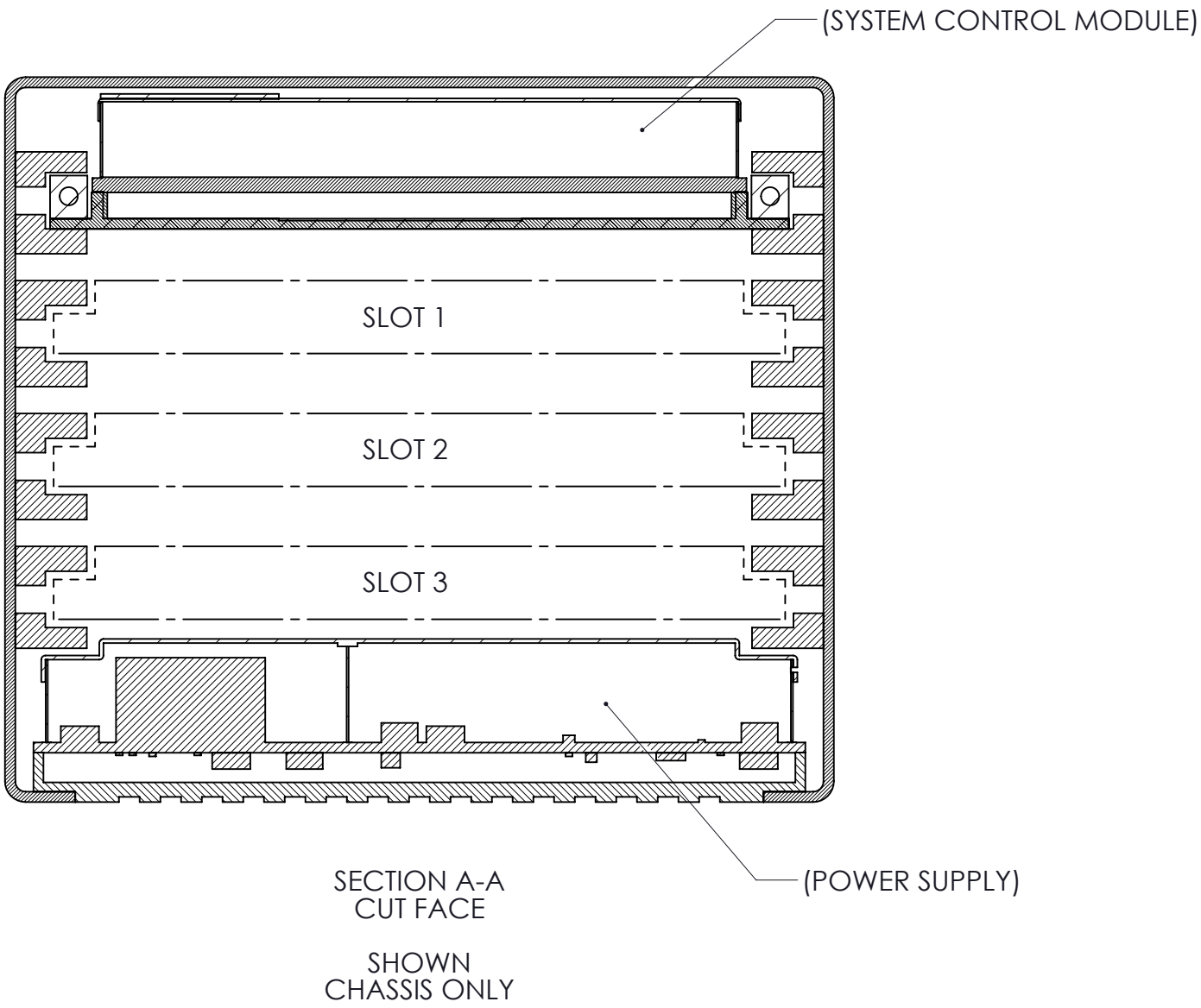
C

B

A

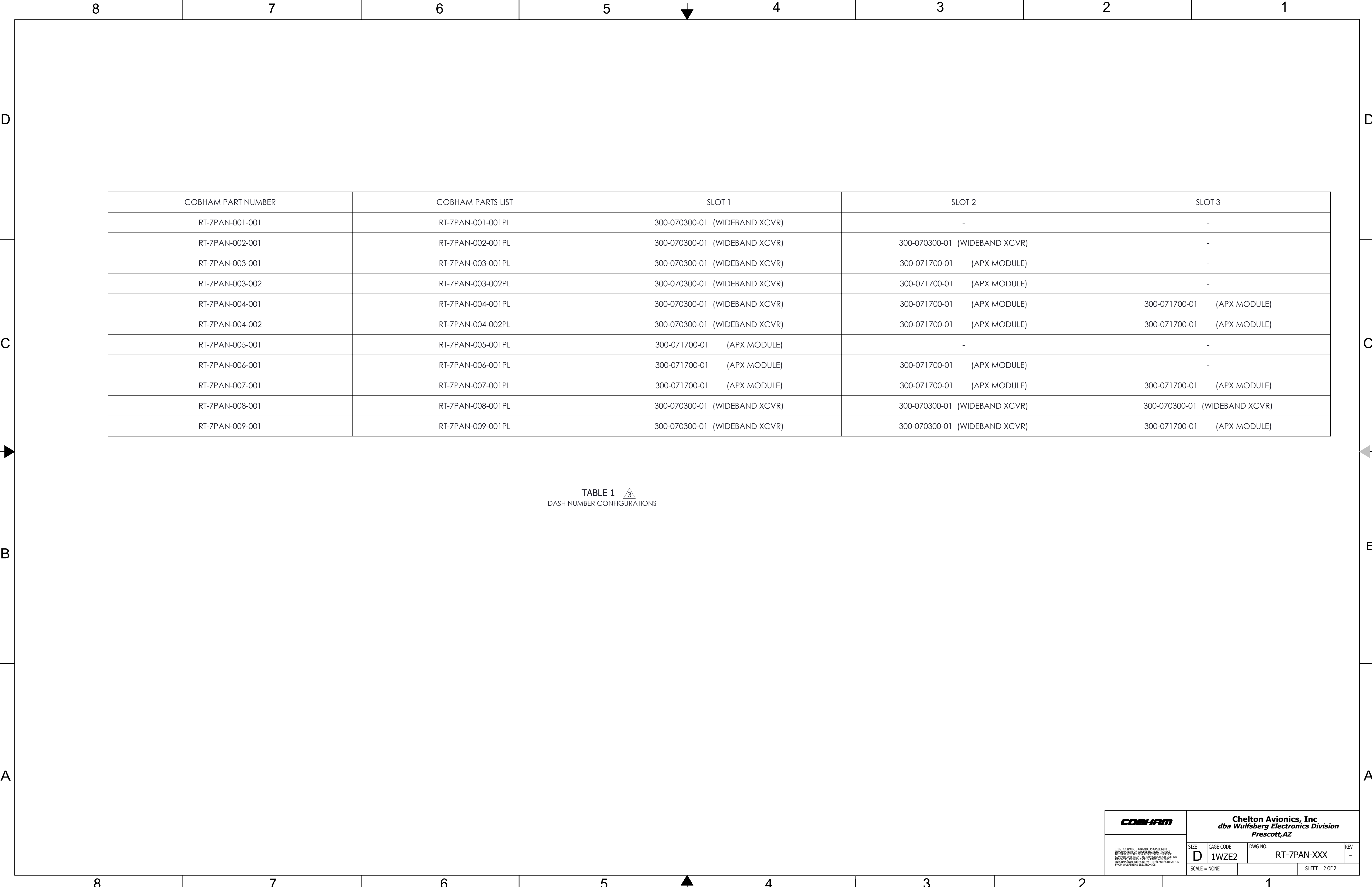
REVISIONS				
REV	DESCRIPTION	DATE	DRAWN	CHECKED
-	INITIAL RELEASE PER DCA W16293	11/02/16		

- NOTES: UNLESS OTHERWISE SPECIFIED.
- THIS DRAWING DEFINES AN ASSEMBLY THAT IS SENSITIVE TO DAMAGE BY ELECTROSTATIC DISCHARGE (ESD). HANDLE IN ACCORDANCE WITH GUIDELINES ESTABLISHED IN ANSI/ESD-S20.20.
 - REFER TO BUILD STANDARD RT-7PAN-XXX-XXXBS FOR REVISIONS OF RELATED DRAWINGS.
 - DASH NUMBER CONFIGURATION SHOWN IN TABLE 1, SHEET 2. SEE SEPARATE P/L ON TABLE 1.
 - INSERT WIDEBAND TRANSCEIVER MODULES (ITEM 2) AND/OR APX MODULES (ITEM 3) INTO SLOTS 1,2 OR 3 PER TABLE 1. ENSURE THAT CONNECTORS FULLY ENGAGE.
 - MODULE WEDGE RETAINERS TO BE TIGHTENED AFTER INDIVIDUAL MODULES ARE INSTALLED. TIGHTEN UNTIL RED INDICATOR IS FLUSH WITH END OF INDICATOR SLEEVE.
 - REFER TO ACCEPTANCE TEST PROCEDURE 650-071022 FOR TRIMMING INSTRUCTIONS FOR SETTING 100MHz CLOCK. PERFORM THIS OPERATION BEFORE INSTALLING THE FRONT PANEL ASSEMBLY.
 - SECURE FRONT PANEL WITH FASTENERS (ITEM 5) AFTER CONNECTING FLEX BOARD W1 CONNECTOR (W1P1) TO ITS MATING CONNECTOR (J1) ON THE BACK OF THE FRONT PANEL. USE CARE AS CONNECTOR IS FRAGILE. TORQUE FASTENERS TO 5.2 IN-LBS PER PCS-108.
 - ADHERE LABELS AS SHOWN. PLACE TAMPERPROOF LABELS OVER SCREW HEADS AS SHOWN (2PL) TO PREVENT SCREW REMOVAL.
 - LOAD SOFTWARE PER PROCEDURE 700-071767.
 - TEST PER TEST PROCEDURE 650-071022.



SPL RT-7PAN-XXX-XXX PL (SEE TABLE 1 FOR PART LIST NUMBERS)

		THESE COMMODITIES, TECHNOLOGY OR SOFTWARE ARE CONTROLLED IN ACCORDANCE WITH THE UNITED STATES EXPORT ADMINISTRATION REGULATIONS. WHEN EXPORTED FROM THE UNITED STATES, DIVERSION CONTRARY TO U.S. LAW IS PROHIBITED.		DRAWN	NAME	DATE	<div><div><div></div><div></div><div></div></div><div><div><div></div><div></div><div></div></div></div><div>Chelton Avionics, Inc. dba Wulfsberg Electronics Division Prescott, AZ</div></div>									
		UNLESS OTHERWISE SPECIFIED:		CHECKED			TITLE		FINAL ASSEMBLY, RT-7PAN							
		ALL DIMENSIONS ARE IN INCHES		ENG APPR.	NA	NA			SIZE		CAGE CODE		DWG NO.		REV	
		TOLERANCES:		MFG APPR.	NA	NA										
		FRACTIONAL: ± 1/16		Q.A.	NA	NA										
		ANGULAR: ±1/2°		MATERIAL:	NA											
		DECIMALS: XX ± .01		FINISH:	NA											
		XXX ± .005		DO NOT SCALE DRAWING			D		1WZ2		RT-7PAN-XXX					
		HOLE TOLERANCES: +.003/- .001		THIRD SIGNATURES INDICATE APPROVAL. HANDWRITTEN SIGNATURE APPROVAL OF THIS DOCUMENT IS ON FILE AT WULFSBERG ELECTRONICS, PRESCOTT, ARIZONA.			SCALE: X:X		WEIGHT: NA		SHEET = 1 OF 2					
NA		NA														
NEXT ASSY		USED ON														
THE INFORMATION CONTAINED IN THIS DRAWING IS THE PROPERTY OF COBHAM. ANY REPRODUCTION IN PART OR AS A WHOLE WITHOUT WRITTEN PERMISSION OF COBHAM IS PROHIBITED.																
						<div><div><div></div><div></div><div></div></div><div><div><div></div><div></div><div></div></div></div><div>COBHAM</div><div>Chelton Avionics, Inc. dba Wulfsberg Electronics Division Prescott, AZ</div></div>										



COBHAM PART NUMBER	COBHAM PARTS LIST	SLOT 1	SLOT 2	SLOT 3
RT-7PAN-001-001	RT-7PAN-001-001PL	300-070300-01 (WIDEBAND XCVR)	-	-
RT-7PAN-002-001	RT-7PAN-002-001PL	300-070300-01 (WIDEBAND XCVR)	300-070300-01 (WIDEBAND XCVR)	-
RT-7PAN-003-001	RT-7PAN-003-001PL	300-070300-01 (WIDEBAND XCVR)	300-071700-01 (APX MODULE)	-
RT-7PAN-003-002	RT-7PAN-003-002PL	300-070300-01 (WIDEBAND XCVR)	300-071700-01 (APX MODULE)	-
RT-7PAN-004-001	RT-7PAN-004-001PL	300-070300-01 (WIDEBAND XCVR)	300-071700-01 (APX MODULE)	300-071700-01 (APX MODULE)
RT-7PAN-004-002	RT-7PAN-004-002PL	300-070300-01 (WIDEBAND XCVR)	300-071700-01 (APX MODULE)	300-071700-01 (APX MODULE)
RT-7PAN-005-001	RT-7PAN-005-001PL	300-071700-01 (APX MODULE)	-	-
RT-7PAN-006-001	RT-7PAN-006-001PL	300-071700-01 (APX MODULE)	300-071700-01 (APX MODULE)	-
RT-7PAN-007-001	RT-7PAN-007-001PL	300-071700-01 (APX MODULE)	300-071700-01 (APX MODULE)	300-071700-01 (APX MODULE)
RT-7PAN-008-001	RT-7PAN-008-001PL	300-070300-01 (WIDEBAND XCVR)	300-070300-01 (WIDEBAND XCVR)	300-070300-01 (WIDEBAND XCVR)
RT-7PAN-009-001	RT-7PAN-009-001PL	300-070300-01 (WIDEBAND XCVR)	300-070300-01 (WIDEBAND XCVR)	300-071700-01 (APX MODULE)

TABLE 1 
DASH NUMBER CONFIGURATIONS