

**Chelton Avionics, Inc. dba Wulfsberg Electronics Division and
Cobham Aerospace Communications**

Communication Products
6400 Wilkinson Drive
Prescott, AZ USA 86301

RT-5000P Internal Pictures

Part numbers 400-015525-0101, 400-015525-0501, and 400-015525-51XX to 400-015525-61XX inclusive.

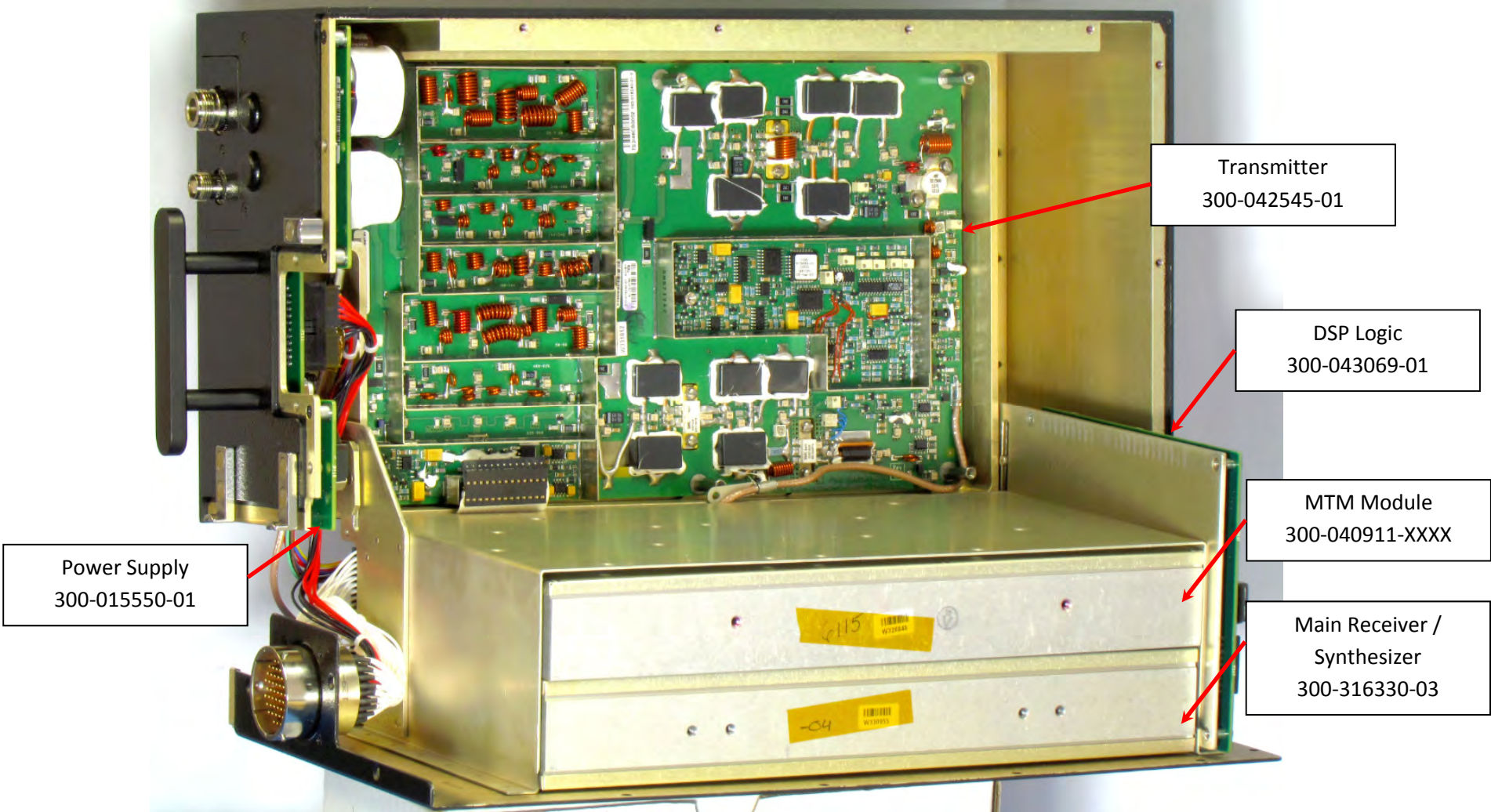
Table of Contents

- 1 INTERNAL VIEWS..... 3
 - 1.1 RADIO OPEN VIEW 3
 - 1.2 DSP, MSM, and Mother Boards assembled 4
 - 1.3 MTM MODULE, 300-040911-XXXX 5
 - 1.4 MTM GUARD MODULE, 300-040911-XXXX, WITHOUT COVER 6
 - 1.5 MTM GUARD MODULE, 300-040911-XXXX, Explode View..... 7
 - 1.6 TANAPA MODULE, 300-049666-XX, Top Side 8
 - 1.7 TANAPA MODULE, 300-049666-XX, Bottom Side 9
 - 1.8 MTM CONTROLLER BOARD, 310-42545-XXXX, Front Side..... 10
 - 1.9 MTM CONTROLLER BOARD, 310-42545-XXXX, Back Side..... 11
 - 1.10 DIPLEXER BOARD, 300-042645-01, Top Side 12
 - 1.11 DIPLEXER BOARD, 300-042645-01, Bottom Side 12
 - 1.12 UHF BOARD, 300-040957-XX, Top Side..... 13
 - 1.13 UHF BOARD, 300-040957-XX, Bottom Side 13
 - 1.14 VHF BOARD, 300-040898-XX, Top Side 14

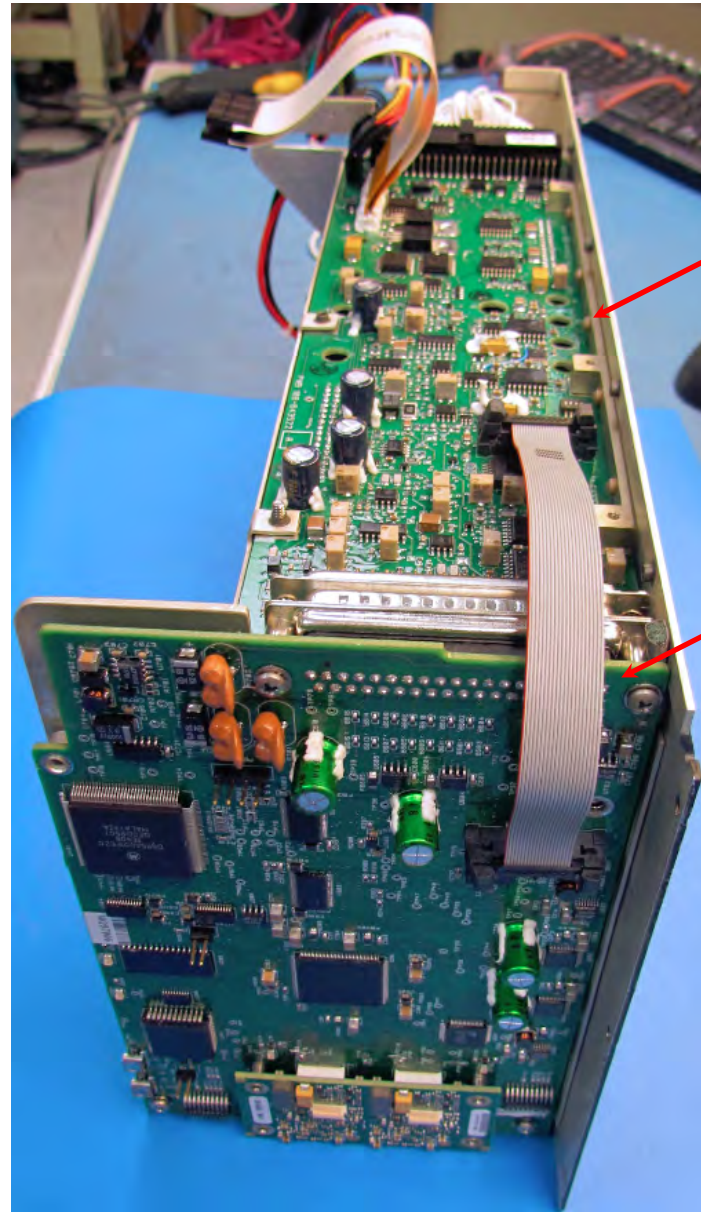
- 1.15 VHF BOARD, 300-040898-XX, Bottom Side 14
- 1.16 RECEIVER and SYNTHESIZER MODULE, 300-316330-03 15
- 1.17 RECEIVER and SYNTHESIZER PARTS LAYOUT 16
- 1.18 RECEIVER BOARD, 300-015443-03, Top Side 17
- 1.19 RECEIVER BOARD, 300-015443-03, Bottom Side 18
- 1.20 SYNTHESIZER BOARD, 300-015471-01, Top Side 19
- 1.21 SYNTHESIZER BOARD, 300-015471-01, Bottom Side 20
- 1.22 TRANSMITTER BOARD, 300-042545-01, Top Side 21
- 1.23 TRANSMITTER BOARD, 300-042545-01, Bottom Side 22
- 1.24 MOTHER BOARD, 300-043522-01, Top Side 23
- 1.25 MOTHER BOARD, 300-043522-01, Bottom Side 24
- 1.26 DSP LOGIC BOARD, 300-043069-01 and MSM Board, 300-043363-01, Assembled 25
- 1.27 DSP LOGIC BOARD, 300-043069-01, Top Side 26
- 1.28 DSP LOGIC BOARD, 300-043069-01, Bottom Side 27
- 1.29 RT-5000 MSM Board, 300-043363-01, Top Side 28
- 1.30 RT-5000 MSM Board, 300-043363-01, Bottom Side 29
- 1.31 POWER SUPPLY BOARD, 300-015550-01, Top Side 30
- 1.32 POWER SUPPLY BOARD, 300-015550-01, Bottom Side 31

1 INTERNAL VIEWS

1.1 RADIO OPEN VIEW



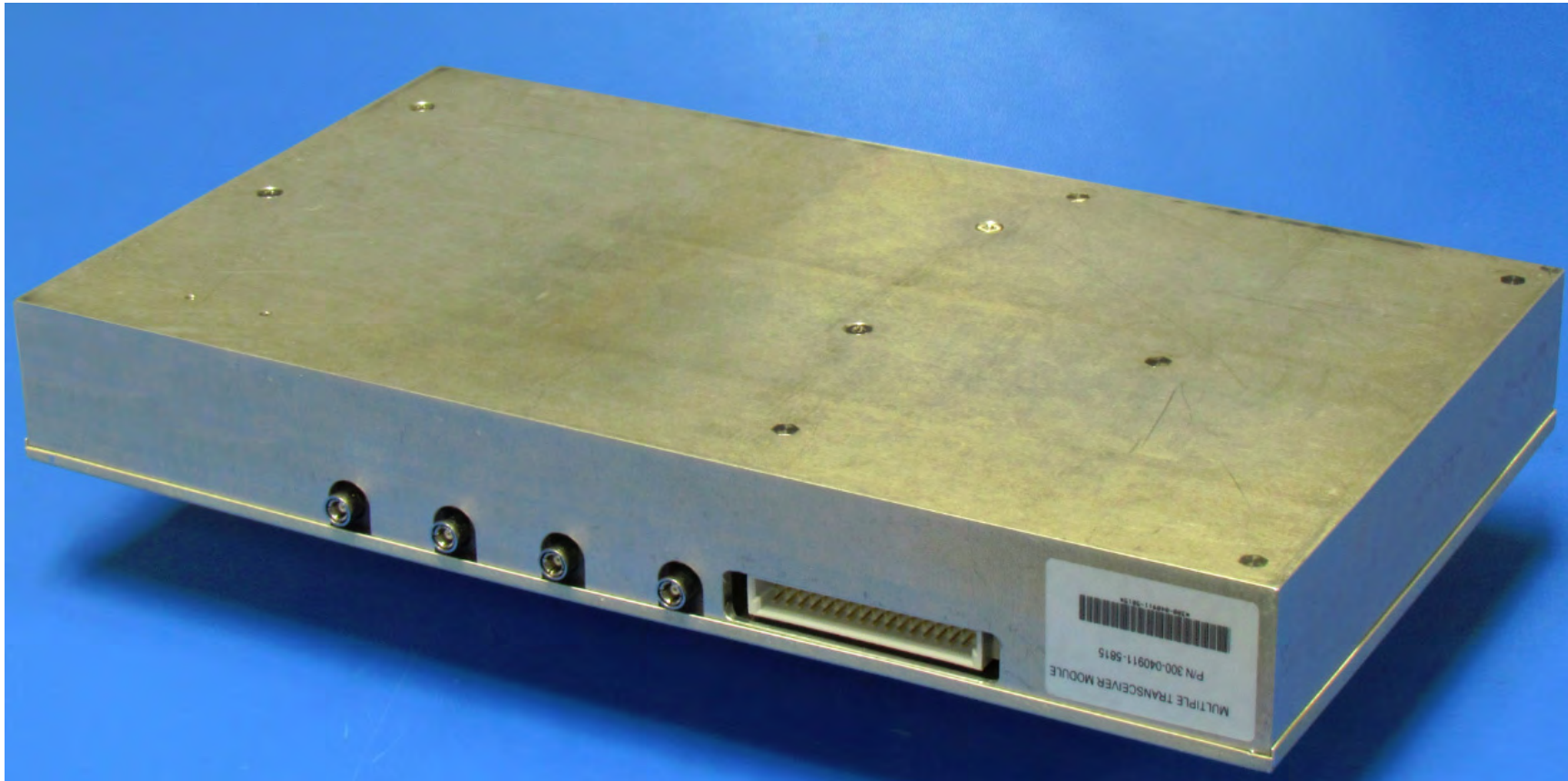
1.2 DSP, MSM, and Mother Boards assembled



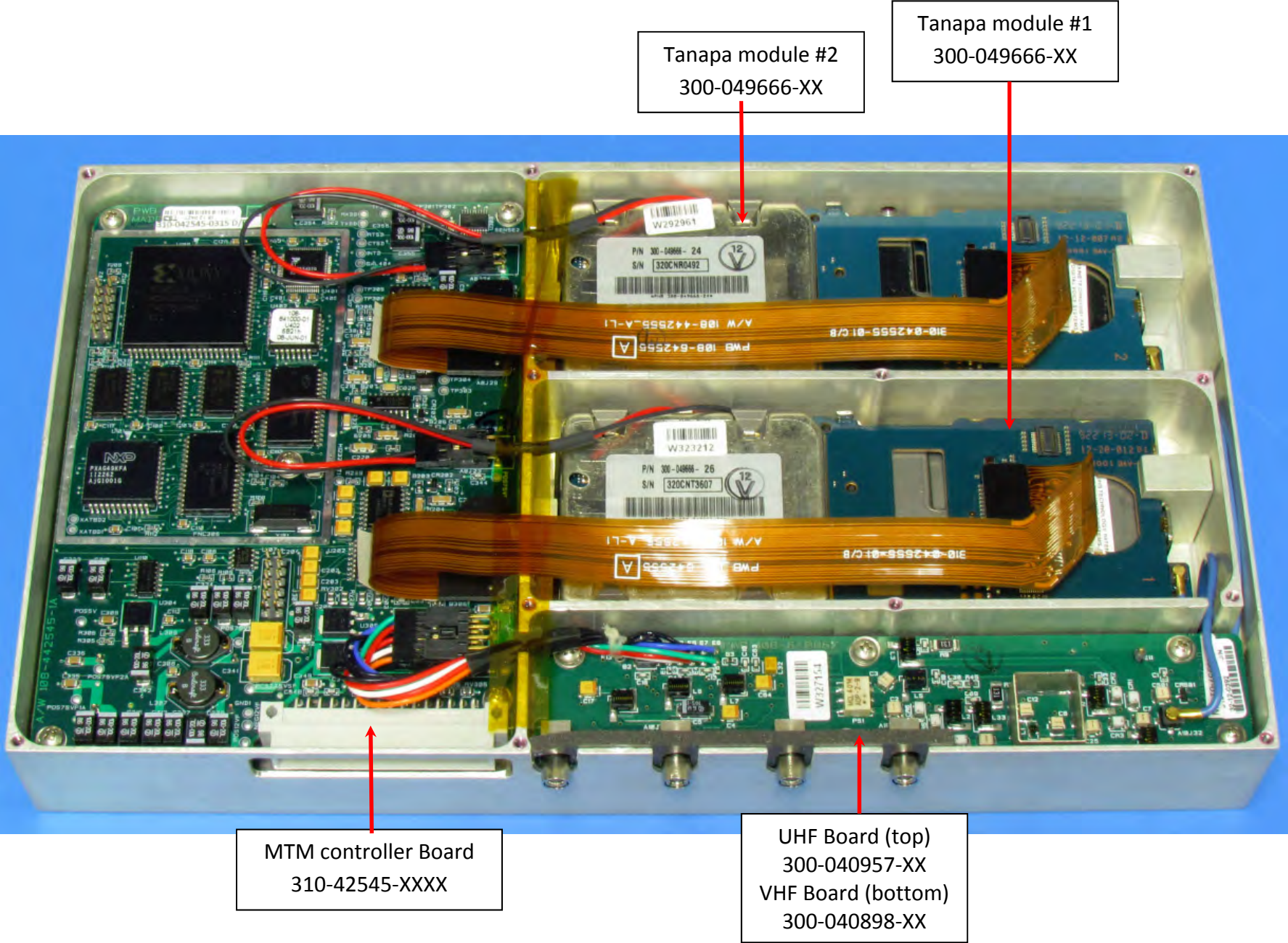
Mother Board
300-043522-01

DSP Logic Board
300-043069-01

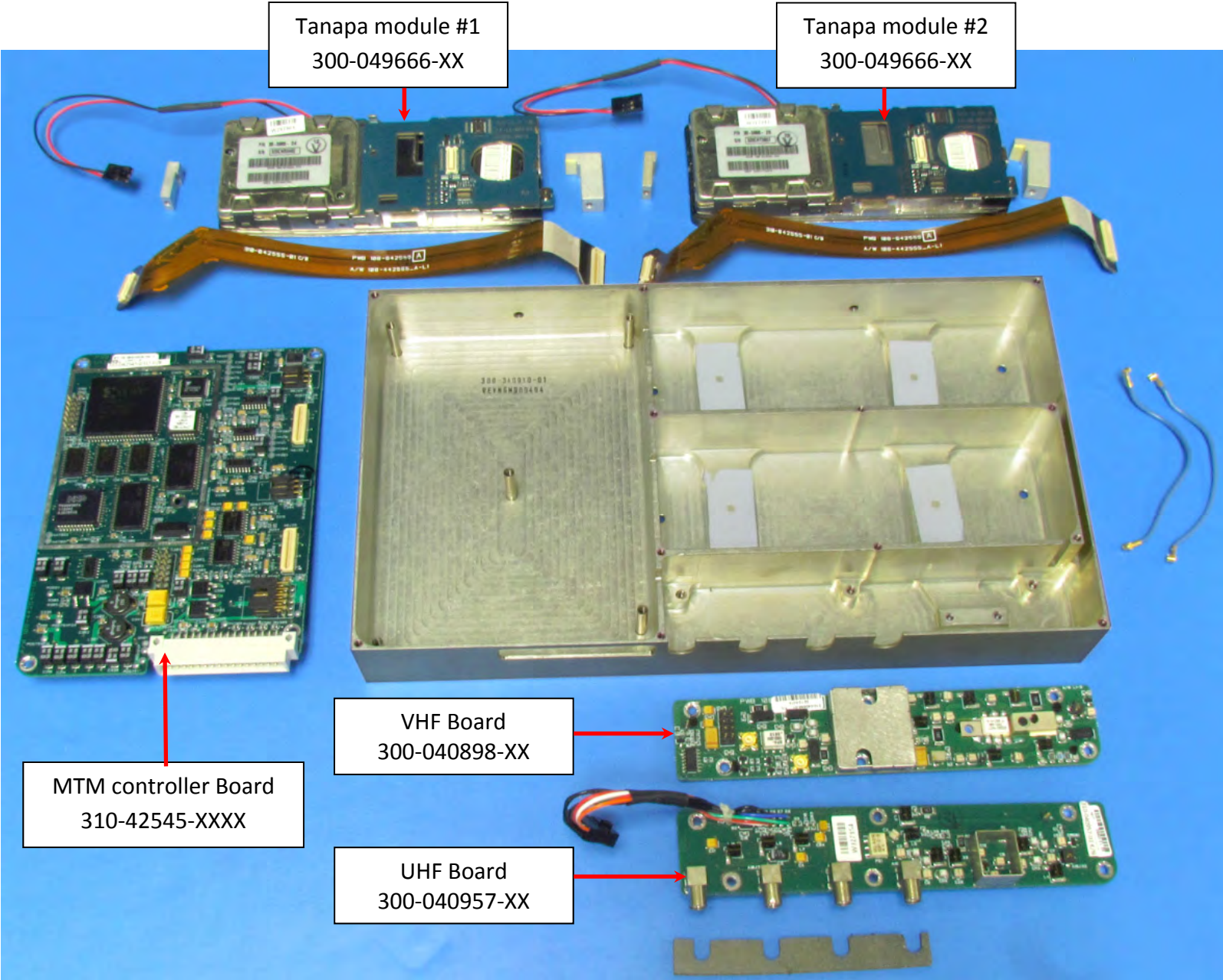
1.3 MTM MODULE, 300-040911-XXXX



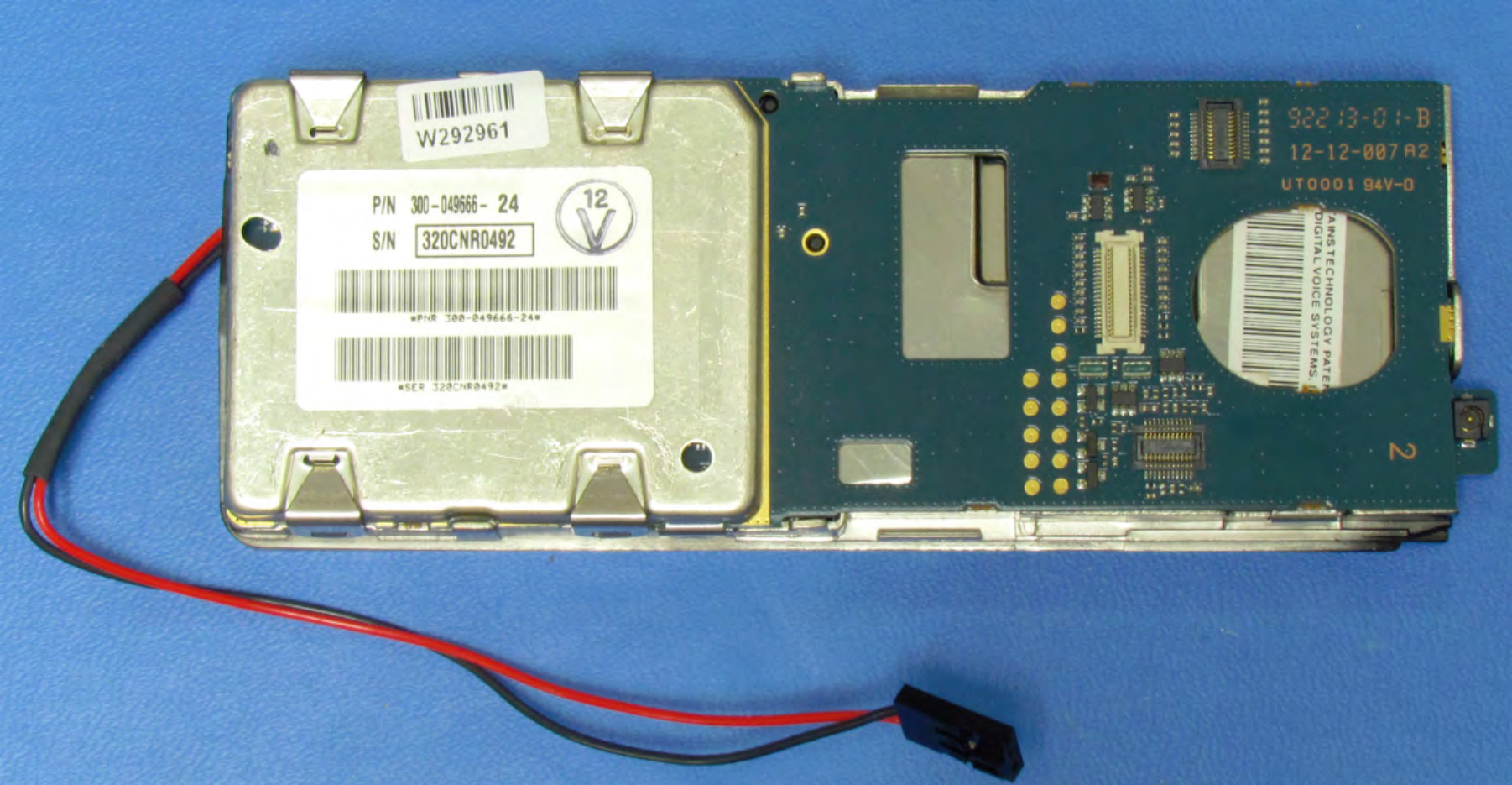
1.4 MTM GUARD MODULE, 300-040911-XXXX, WITHOUT COVER



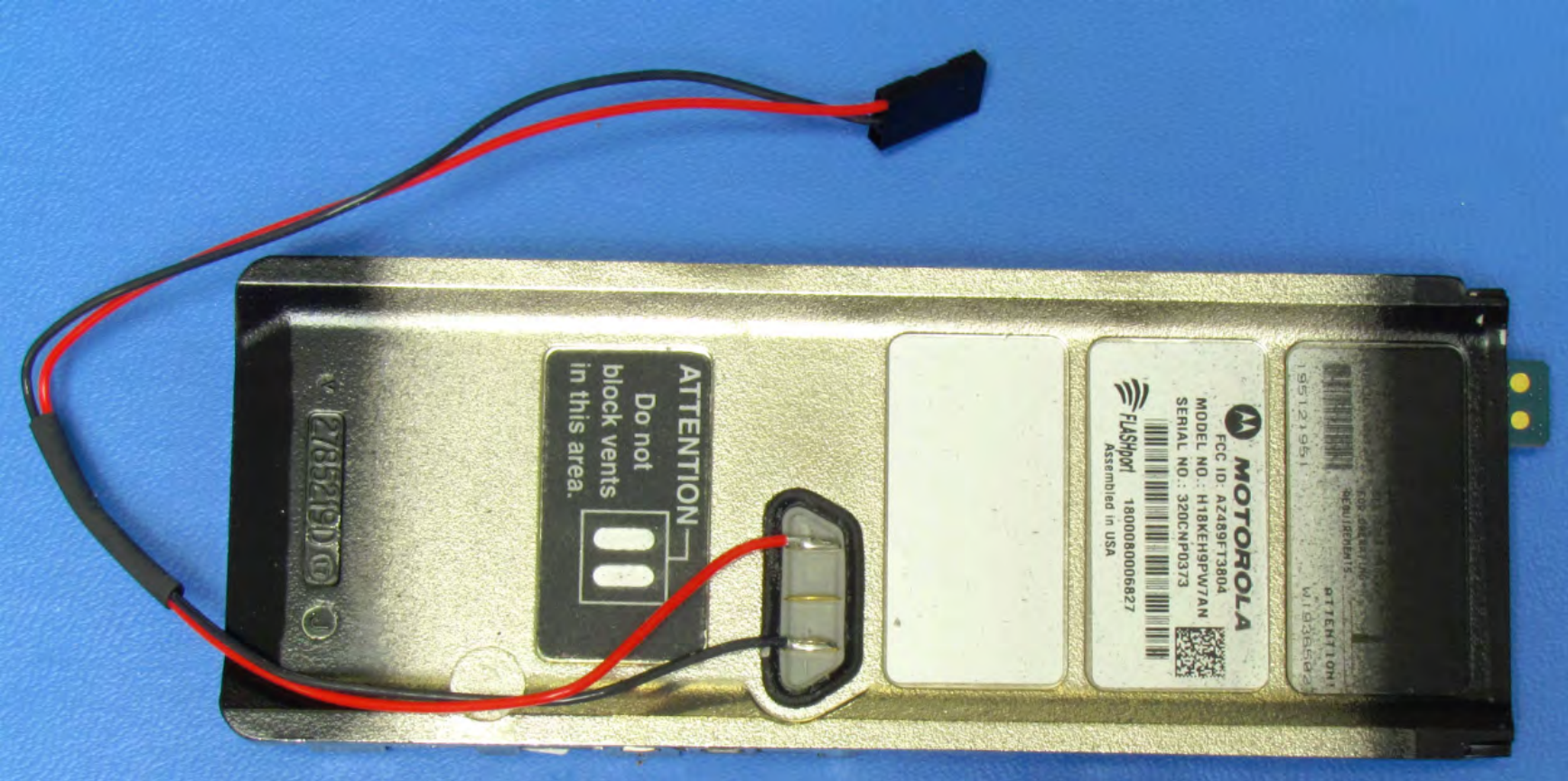
1.5 MTM GUARD MODULE, 300-040911-XXXX, Explode View



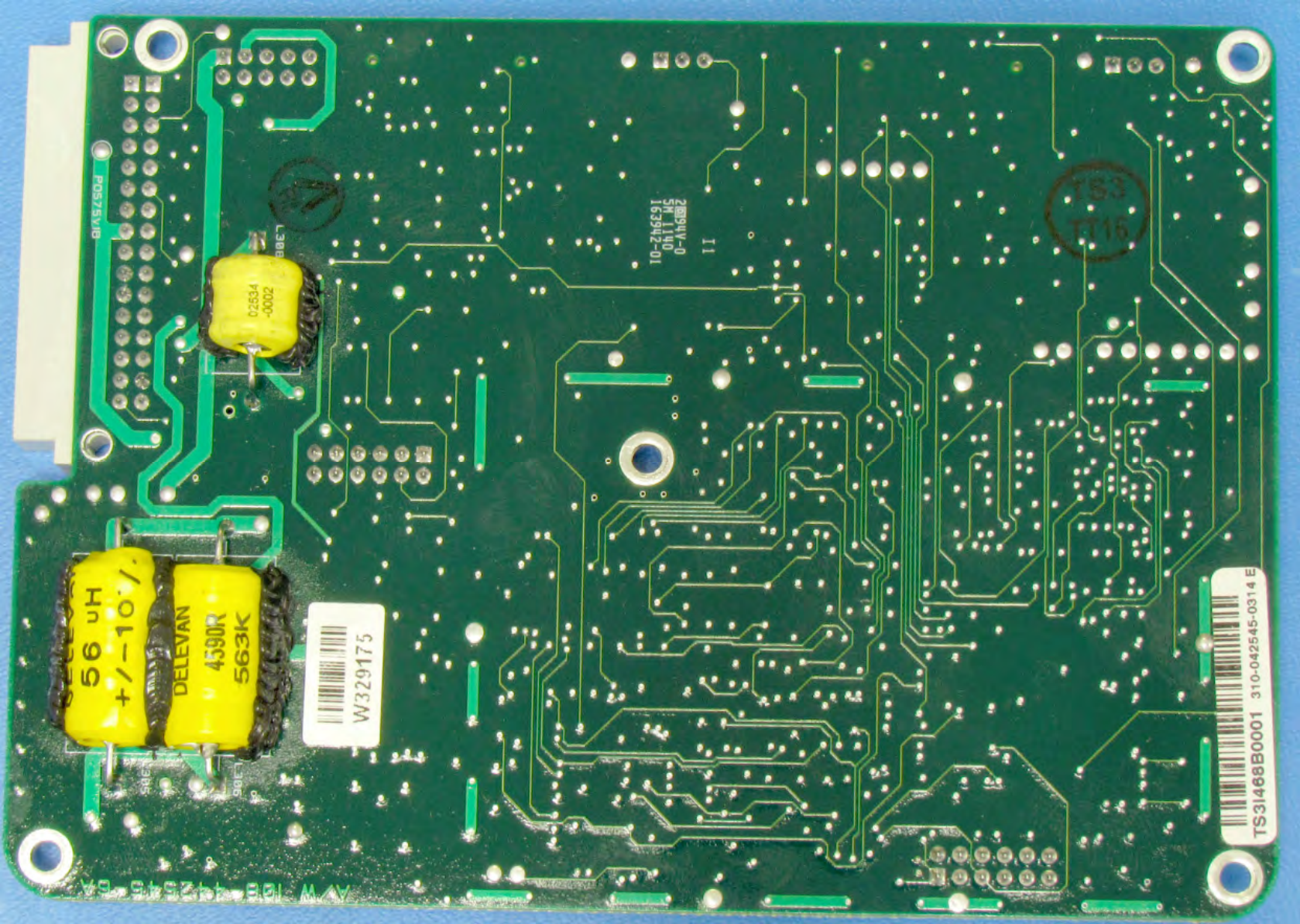
1.6 TANAPA MODULE, 300-049666-XX, Top Side



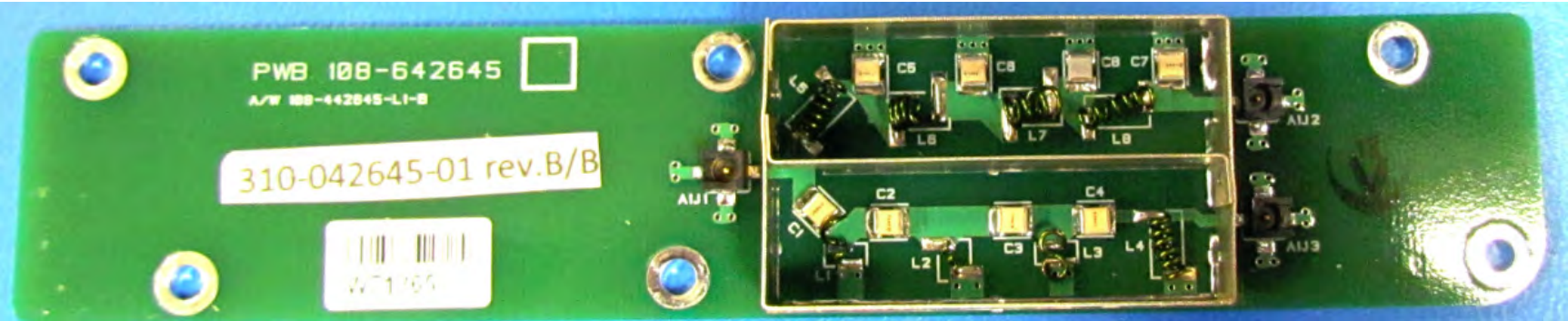
1.7 TANAPA MODULE, 300-049666-XX, Bottom Side



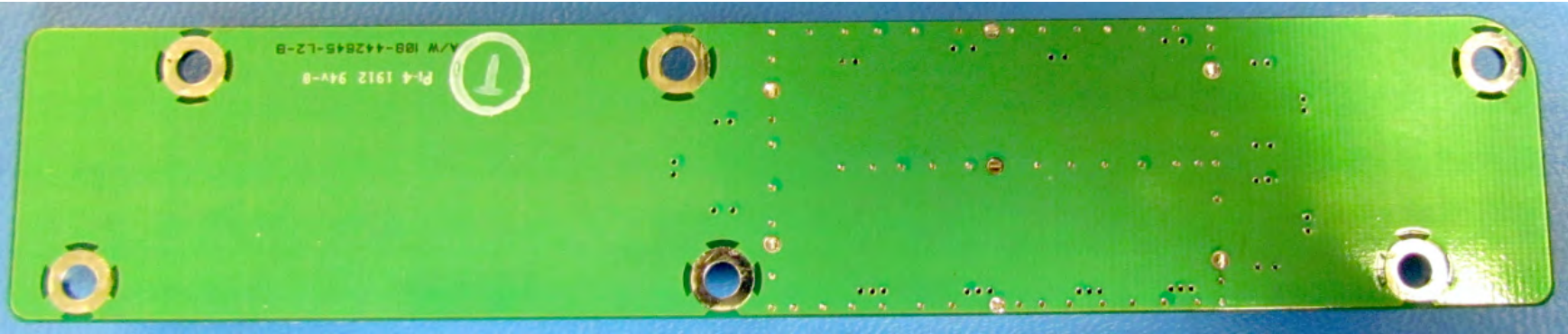
1.9 MTM CONTROLLER BOARD, 310-42545-XXXX, Back Side



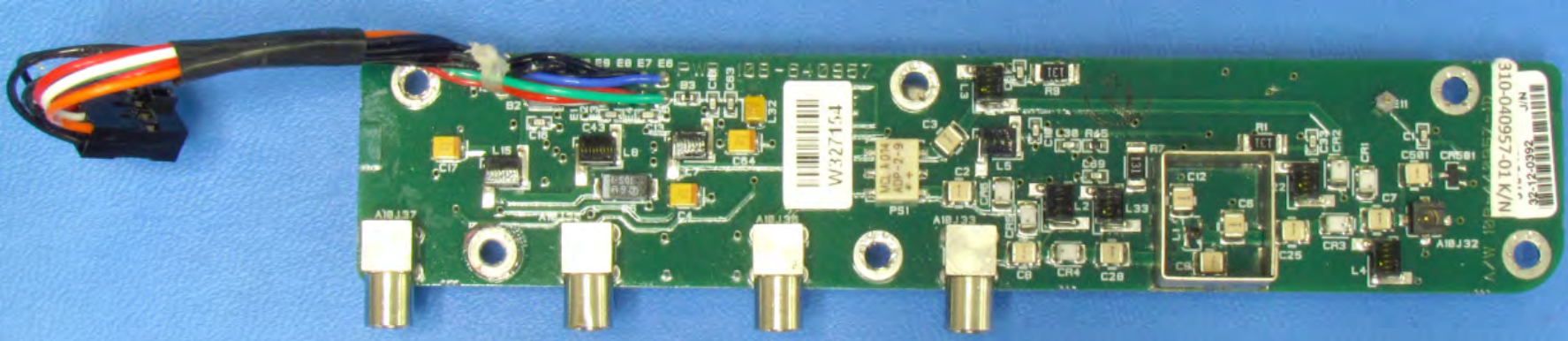
1.10 DIPLEXER BOARD, 300-042645-01, Top Side



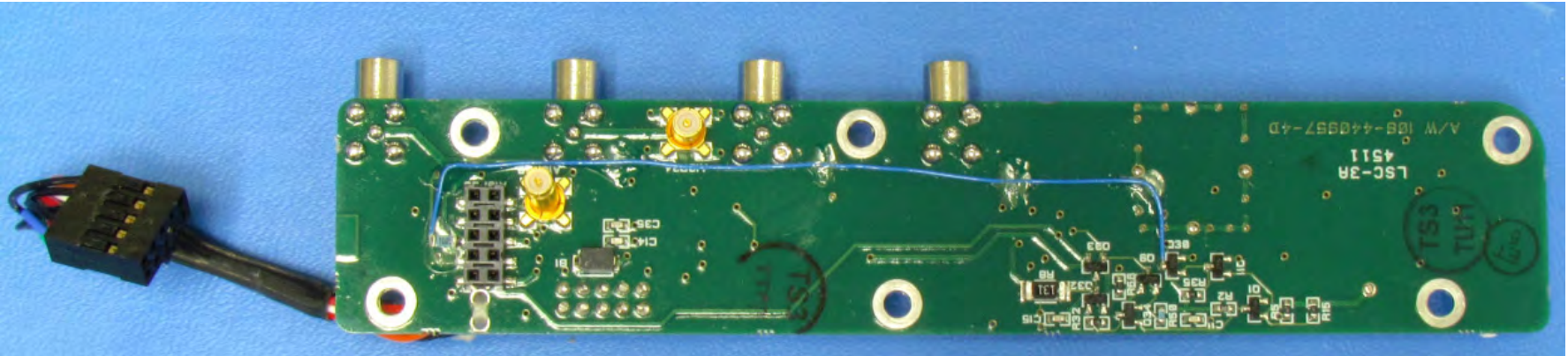
1.11 DIPLEXER BOARD, 300-042645-01, Bottom Side



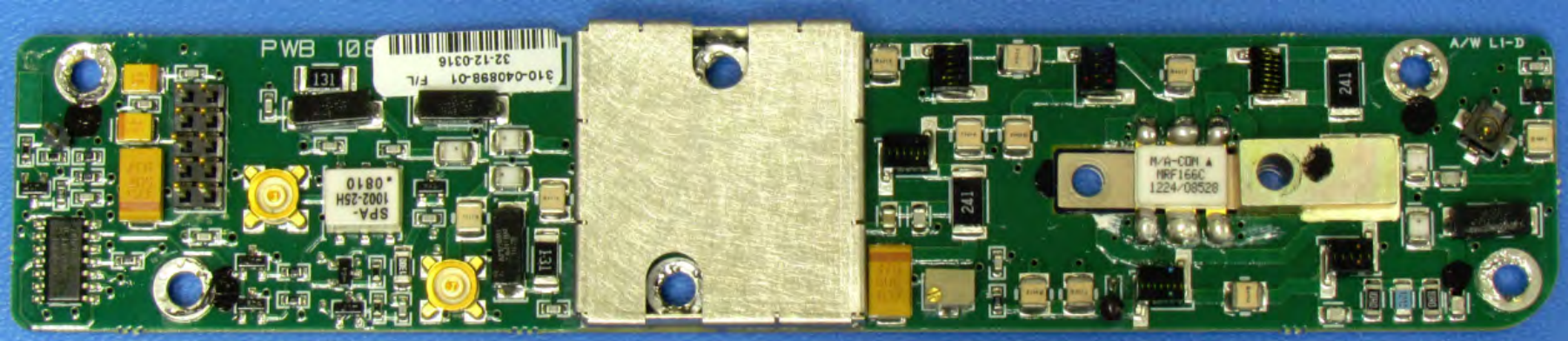
1.12 UHF BOARD, 300-040957-XX, Top Side



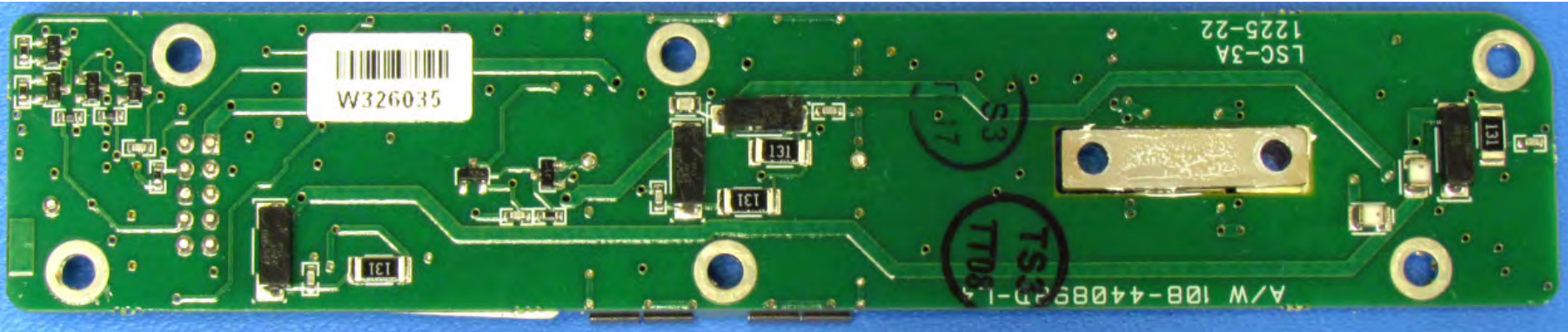
1.13 UHF BOARD, 300-040957-XX, Bottom Side



1.14 VHF BOARD, 300-040898-XX, Top Side



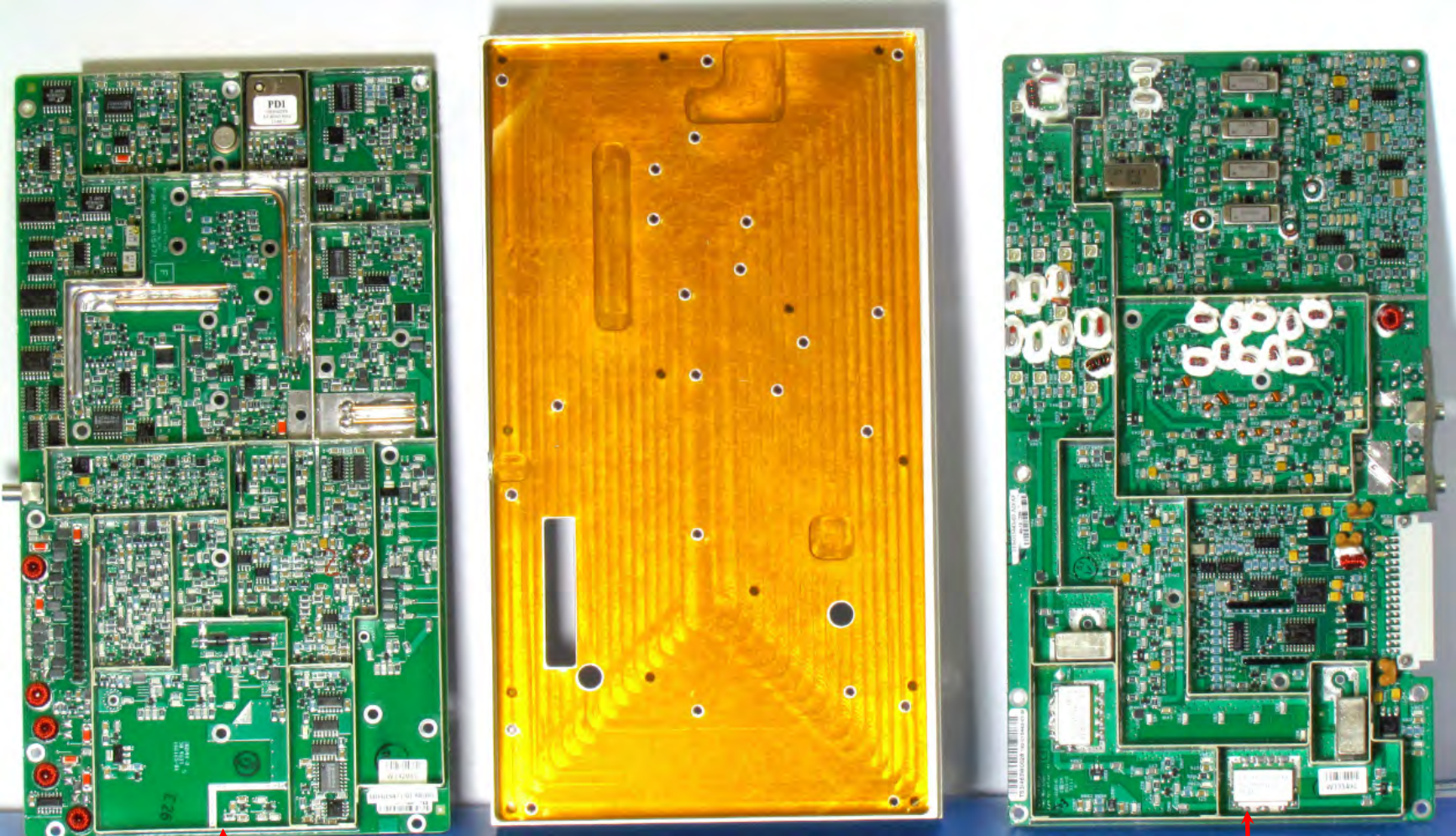
1.15 VHF BOARD, 300-040898-XX, Bottom Side



1.16 RECEIVER and SYNTHESIZER MODULE, 300-316330-03



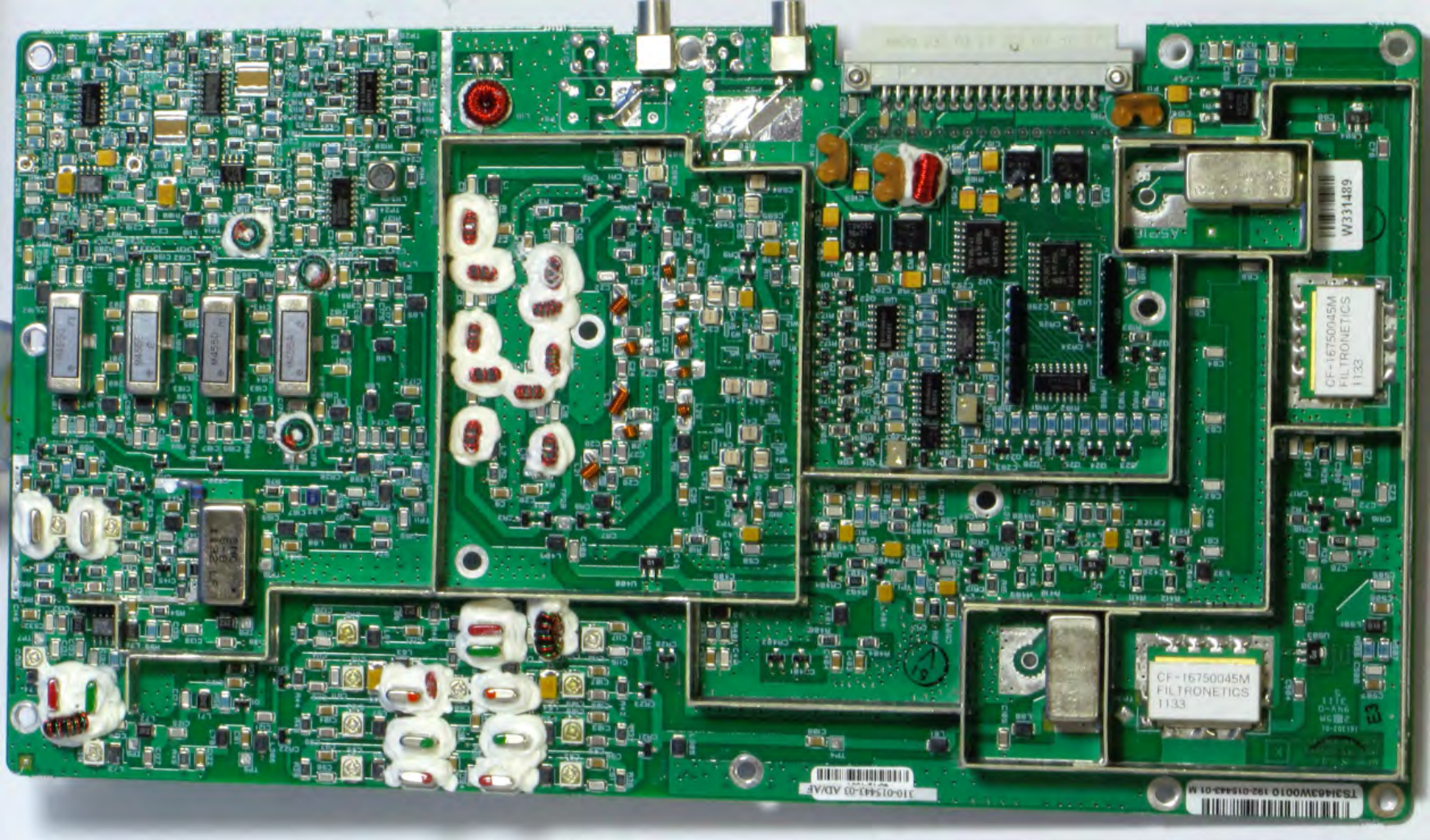
1.17 RECEIVER and SYNTHESIZER PARTS LAYOUT



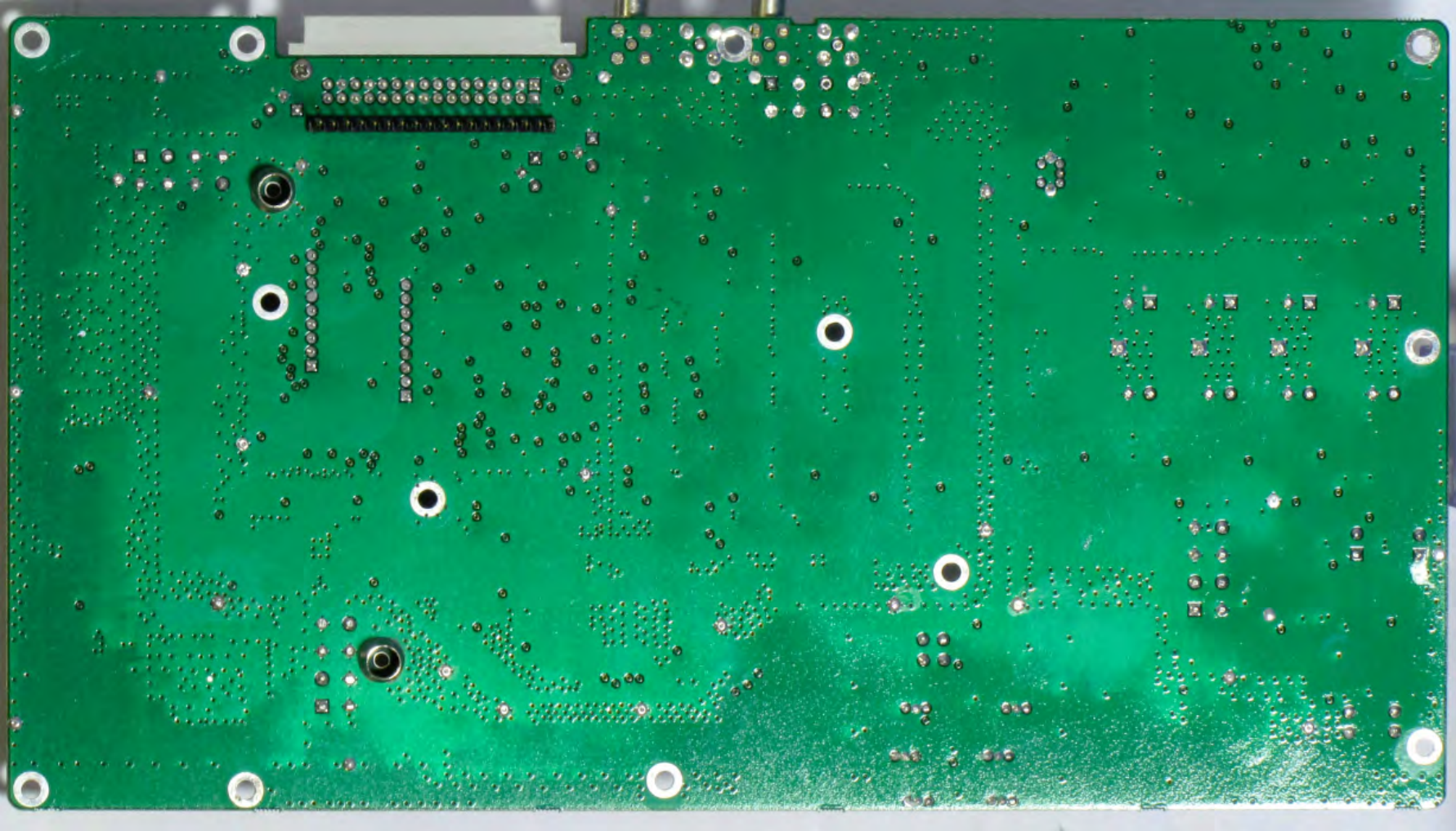
SYNTHESIZER
300-015471-01

RECEIVER
300-015443-03

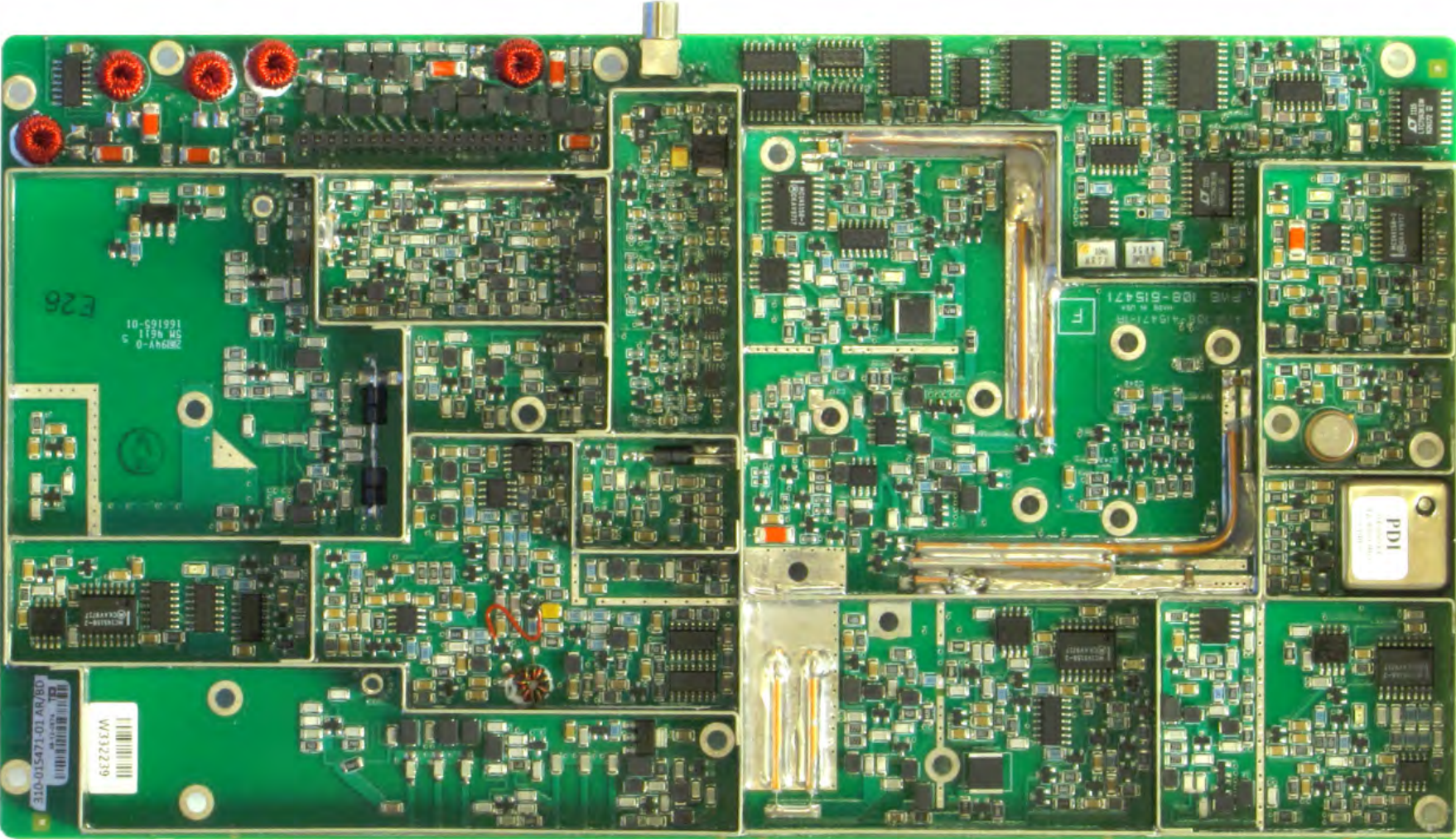
1.18 RECEIVER BOARD, 300-015443-03, Top Side



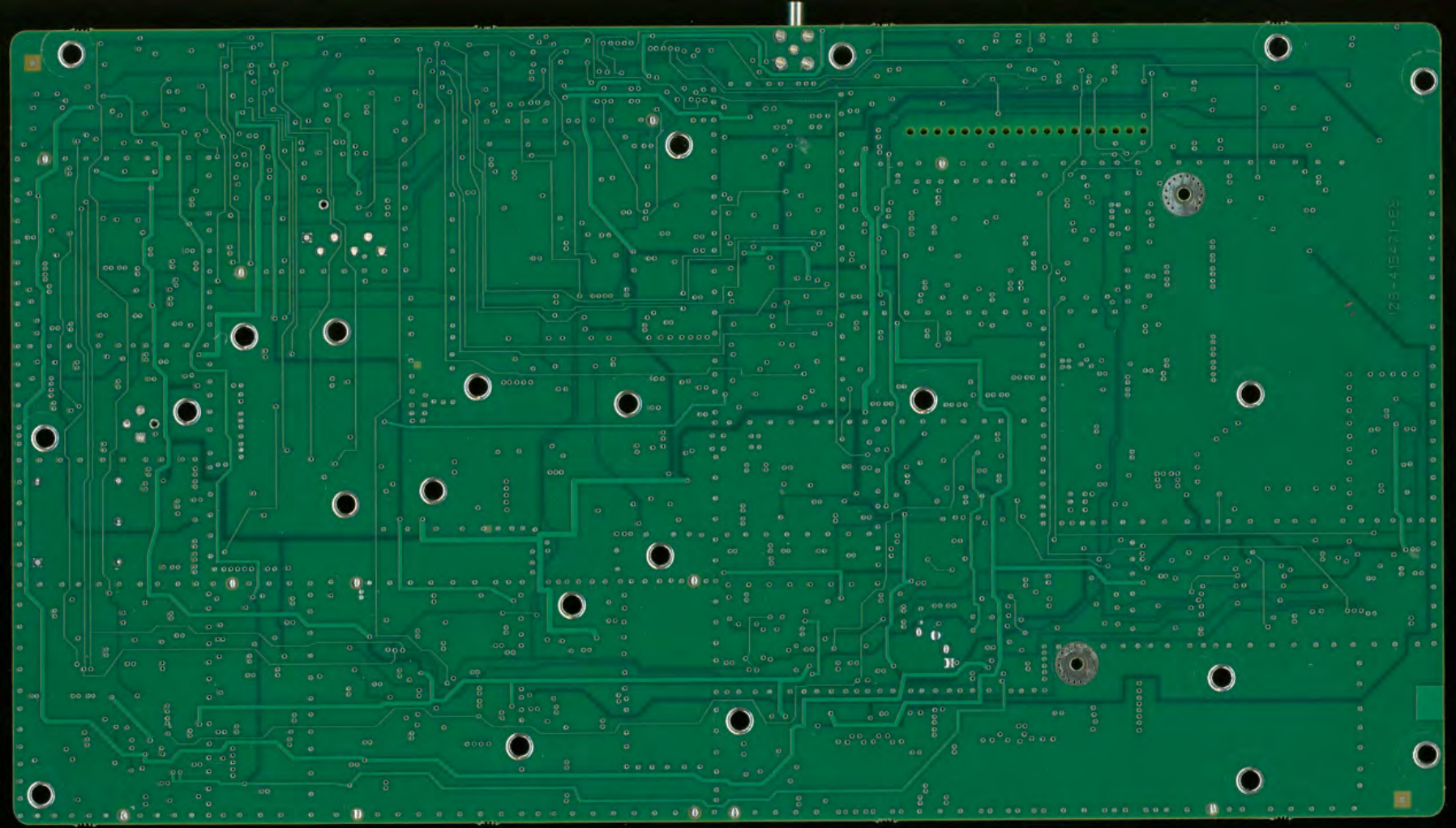
1.19 RECEIVER BOARD, 300-015443-03, Bottom Side



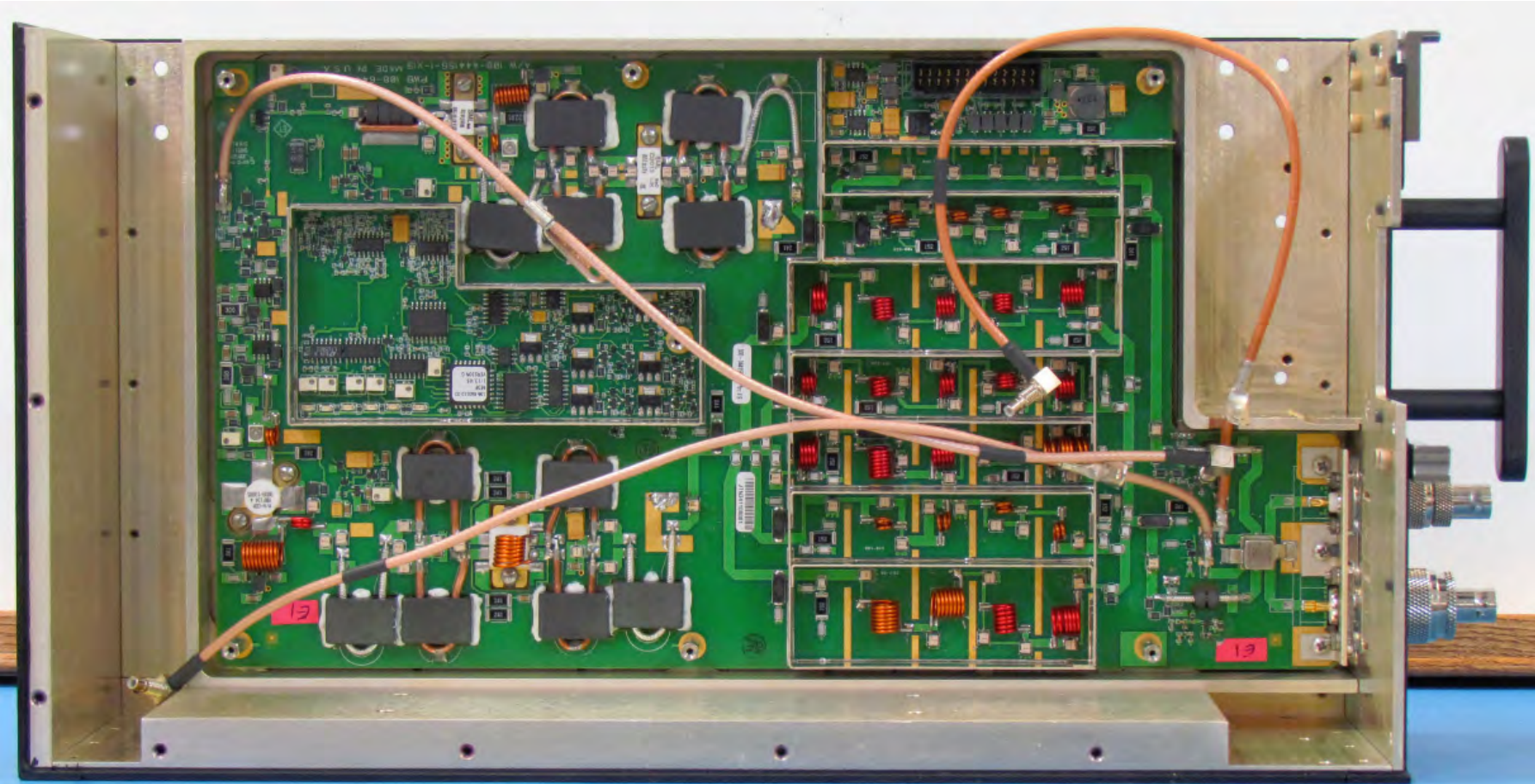
1.20 SYNTHESIZER BOARD, 300-015471-01, Top Side



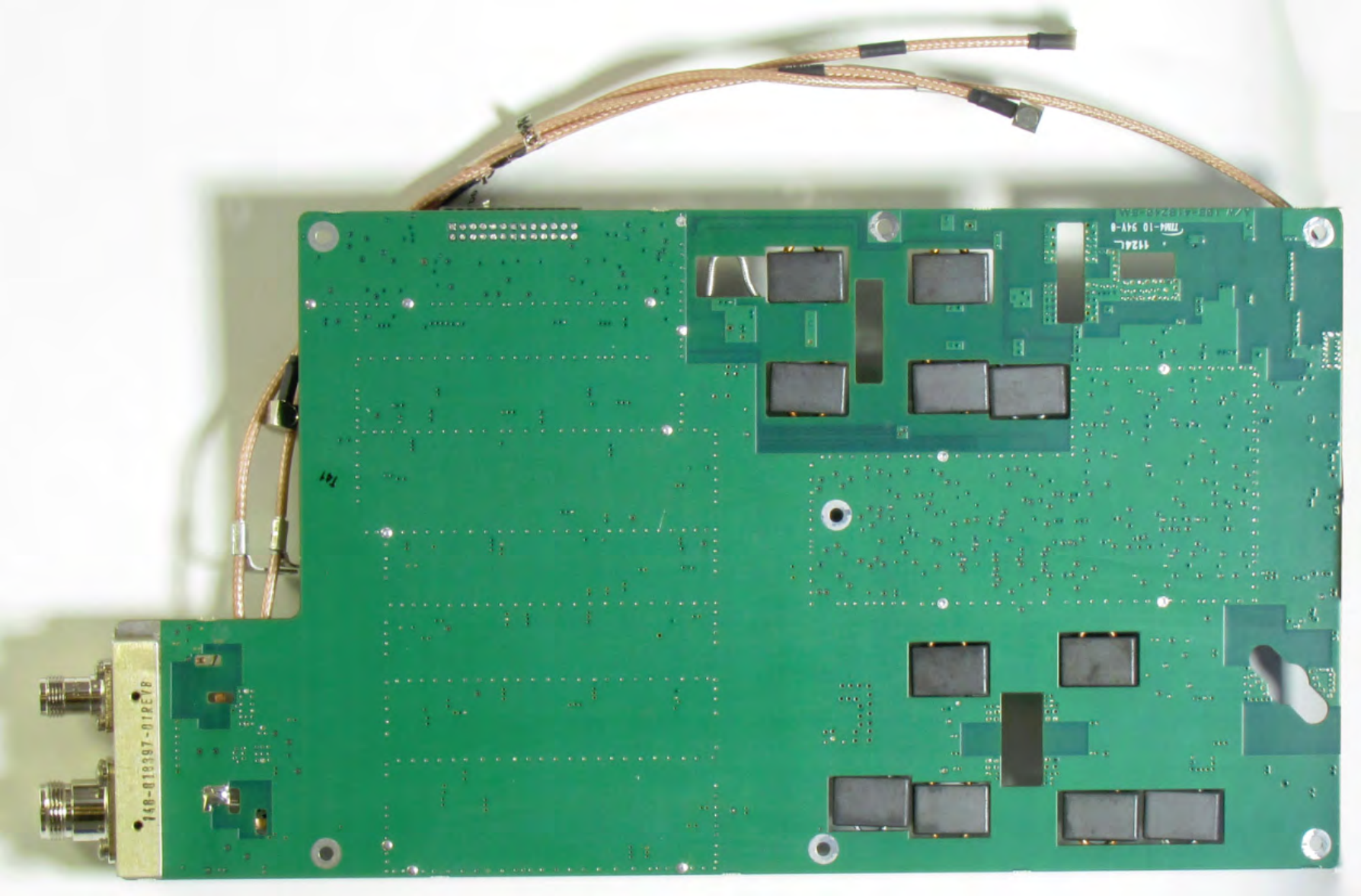
1.21 SYNTHESIZER BOARD, 300-015471-01, Bottom Side



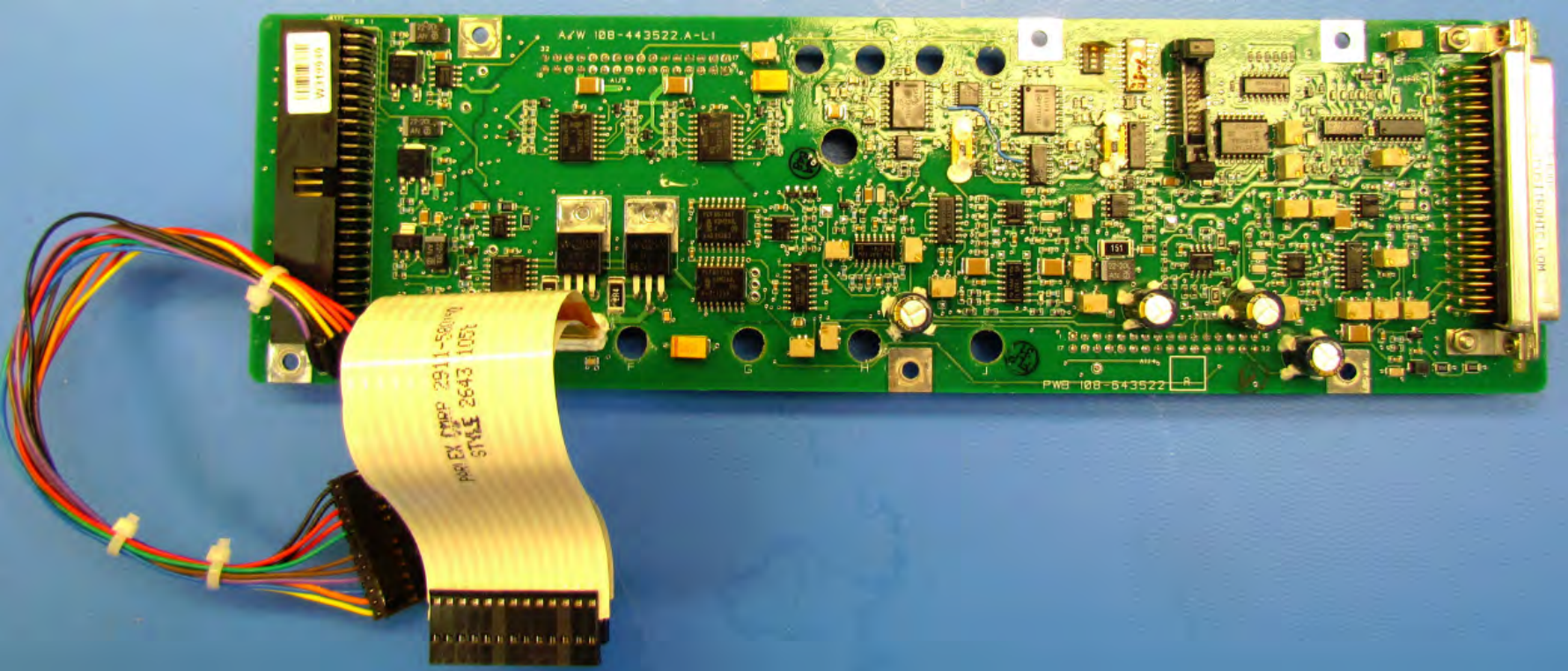
1.22 TRANSMITTER BOARD, 300-042545-01, Top Side



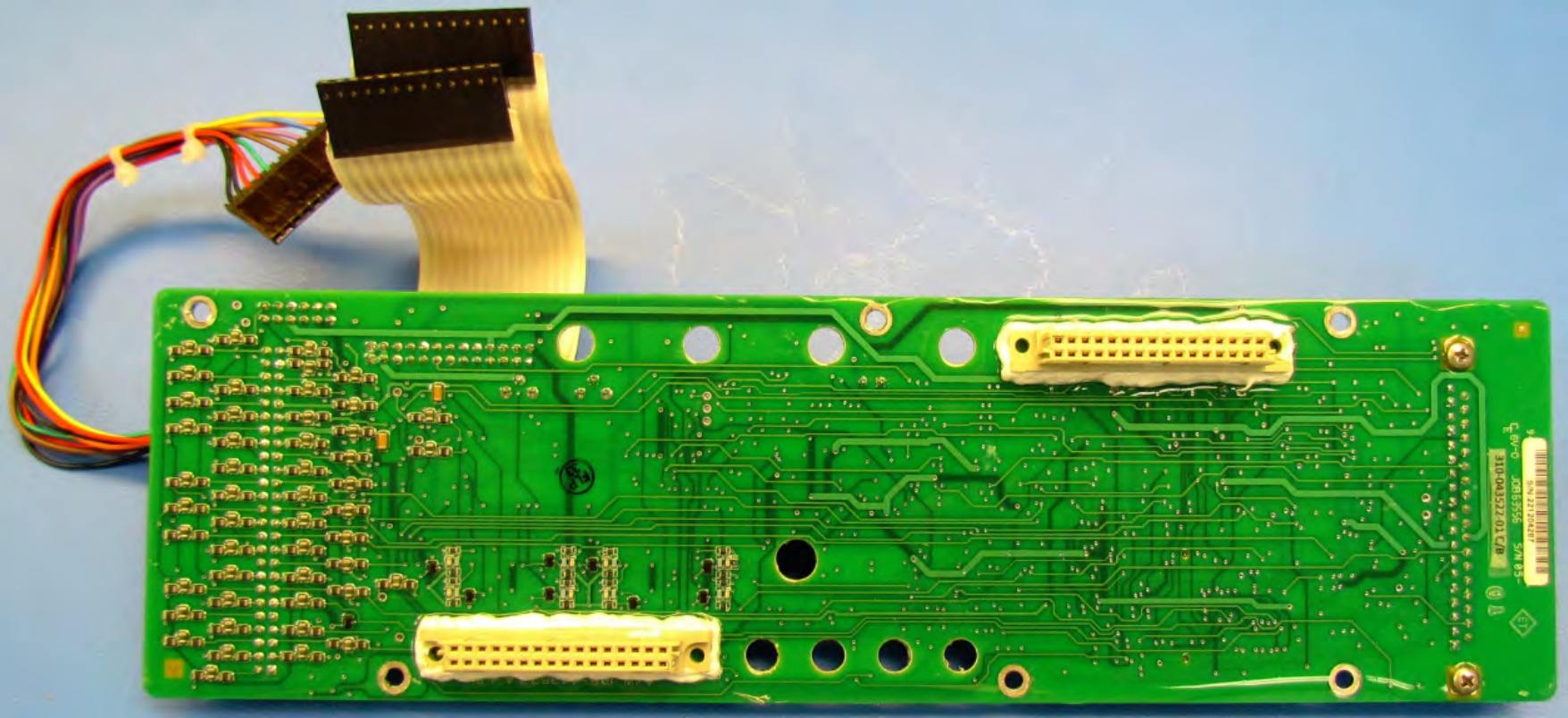
1.23 TRANSMITTER BOARD, 300-042545-01, Bottom Side



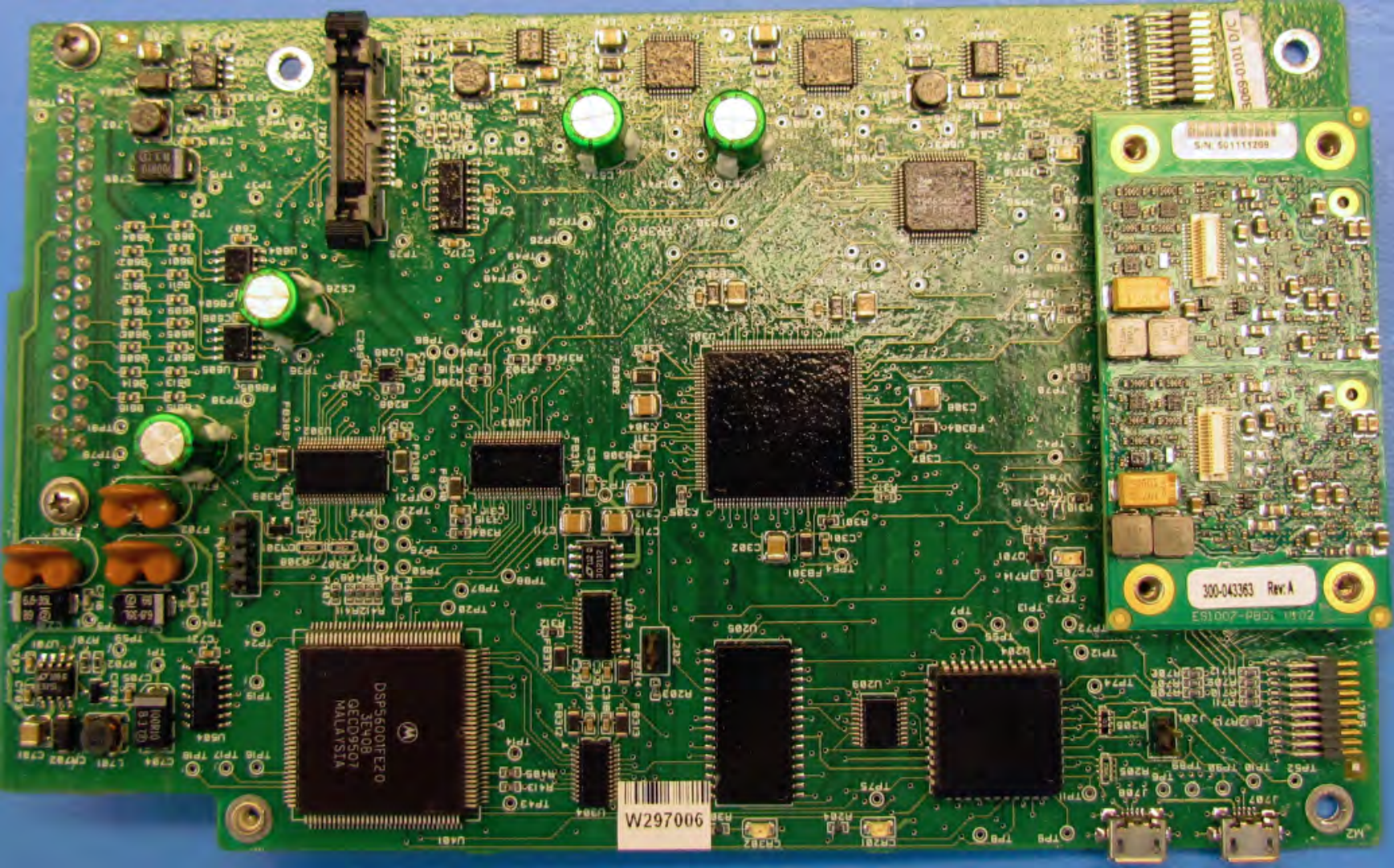
1.24 MOTHER BOARD, 300-043522-01, Top Side



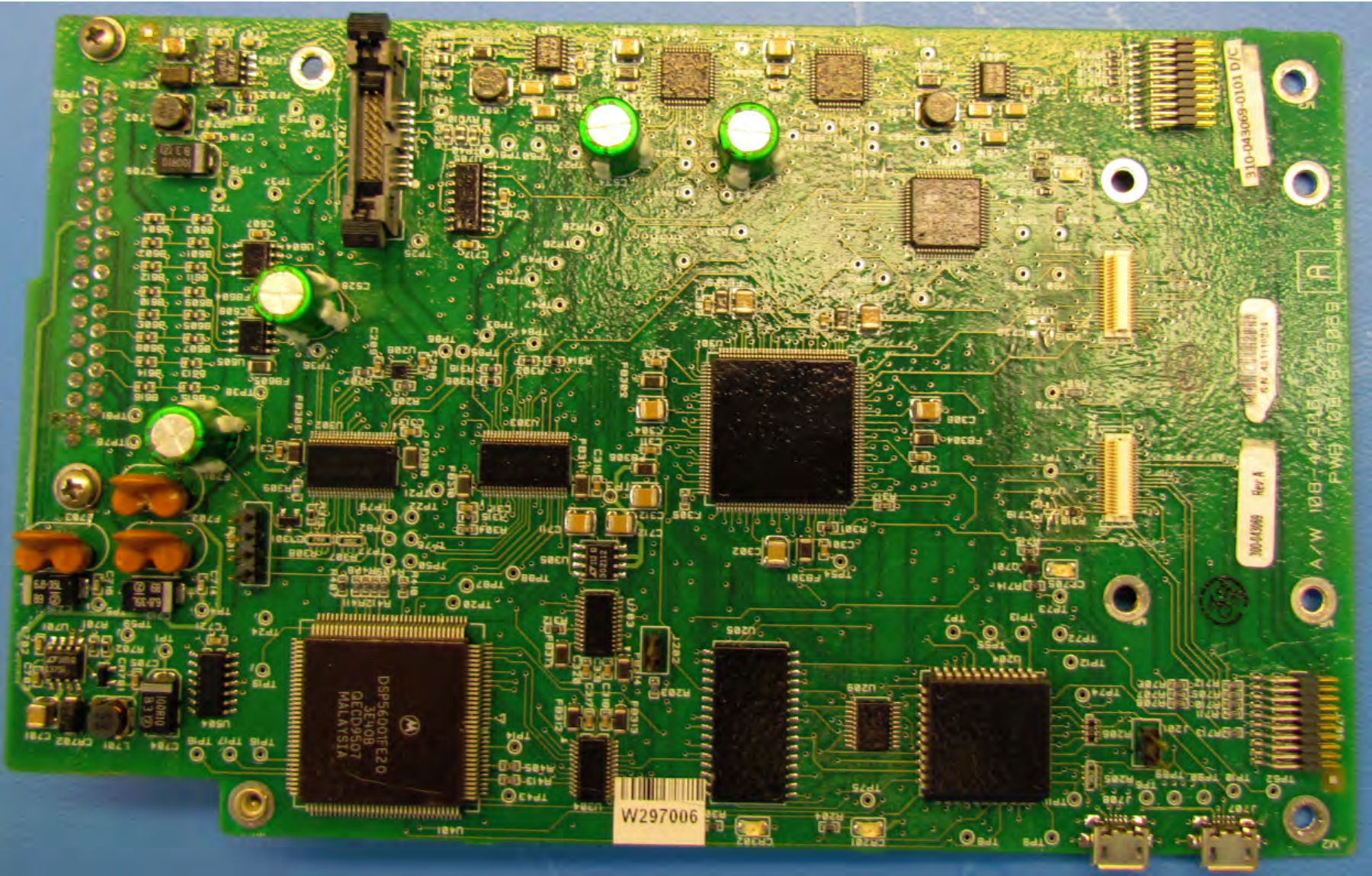
1.25 MOTHER BOARD, 300-043522-01, Bottom Side



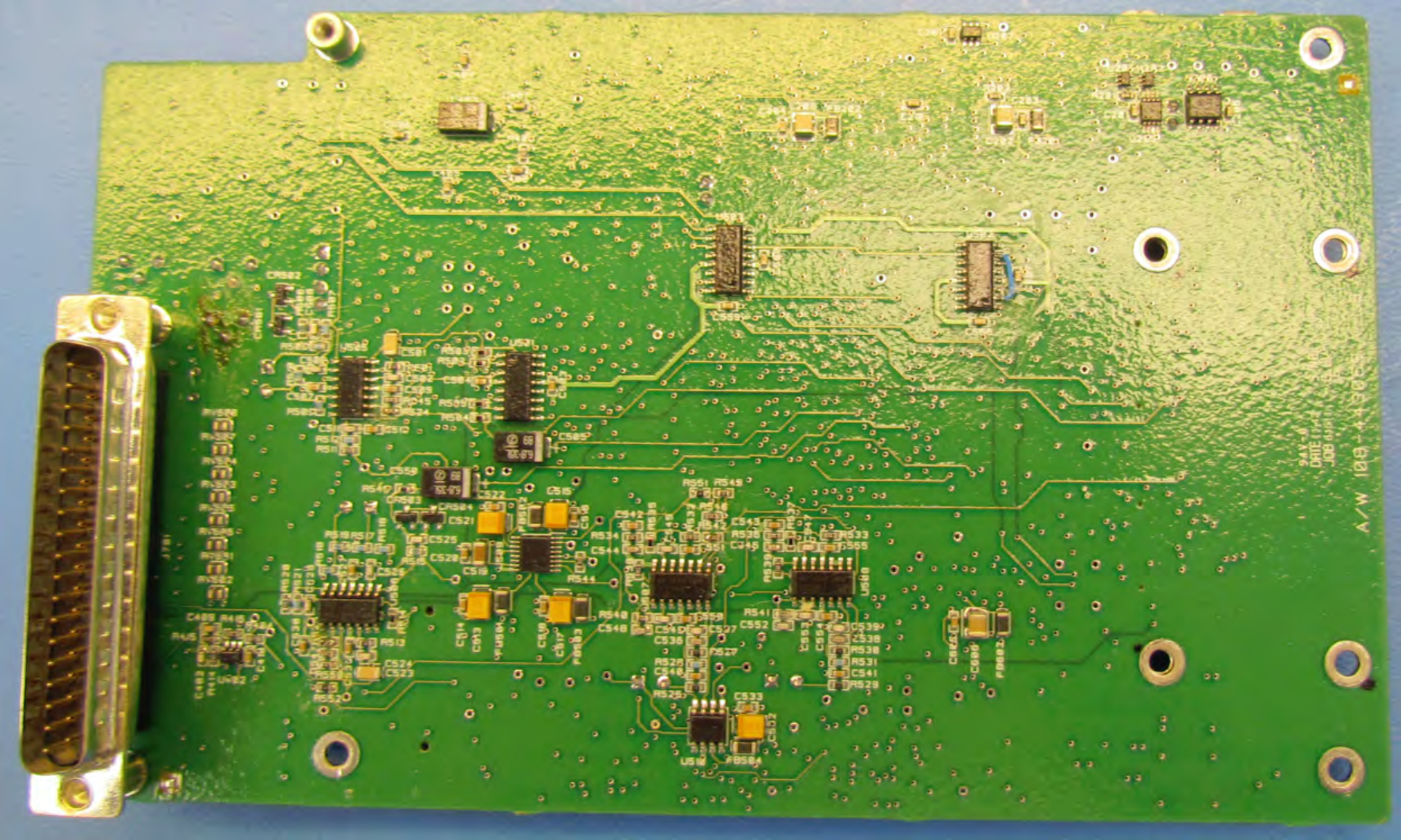
1.26 DSP LOGIC BOARD, 300-043069-01 and MSM Board, 300-043363-01, Assembled.



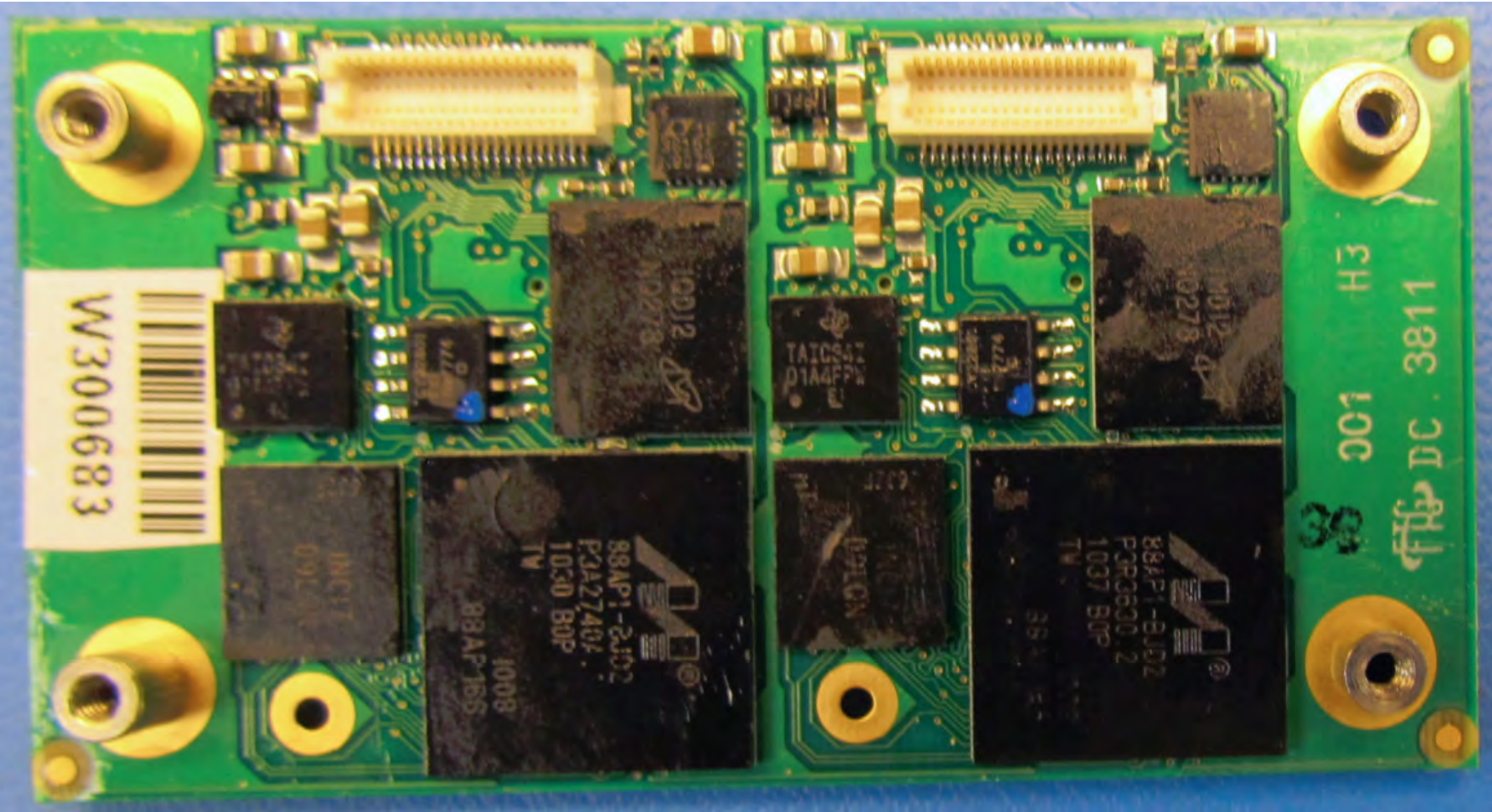
1.27 DSP LOGIC BOARD, 300-043069-01, Top Side



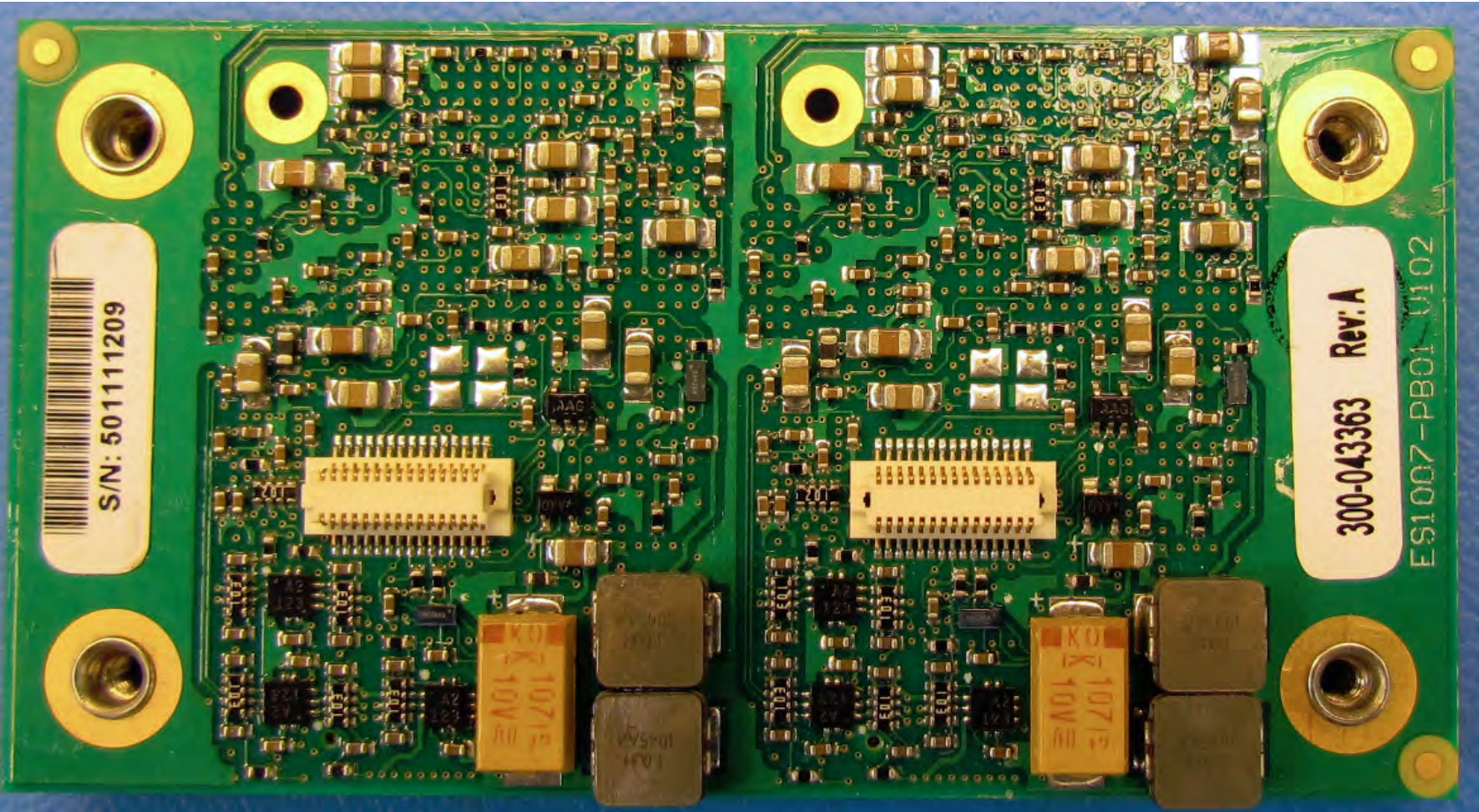
1.28 DSP LOGIC BOARD, 300-043069-01, Bottom Side



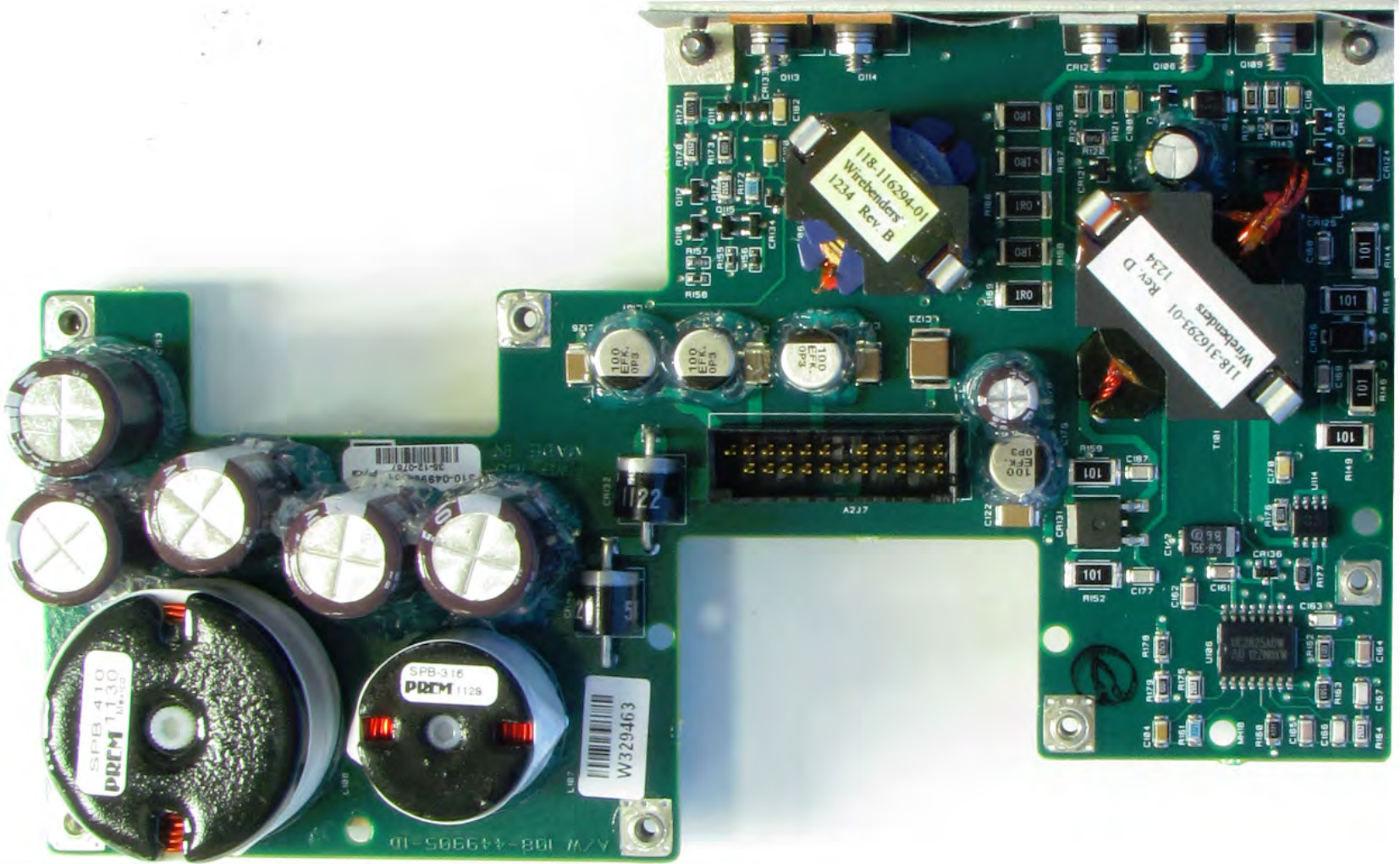
1.29 RT-5000 MSM Board, 300-043363-01, Top Side



1.30 RT-5000 MSM Board, 300-043363-01, Bottom Side



1.31 POWER SUPPLY BOARD, 300-015550-01, Top Side



1.32 POWER SUPPLY BOARD, 300-015550-01, Bottom Side

