

Internal Photos Of Complete Assembly

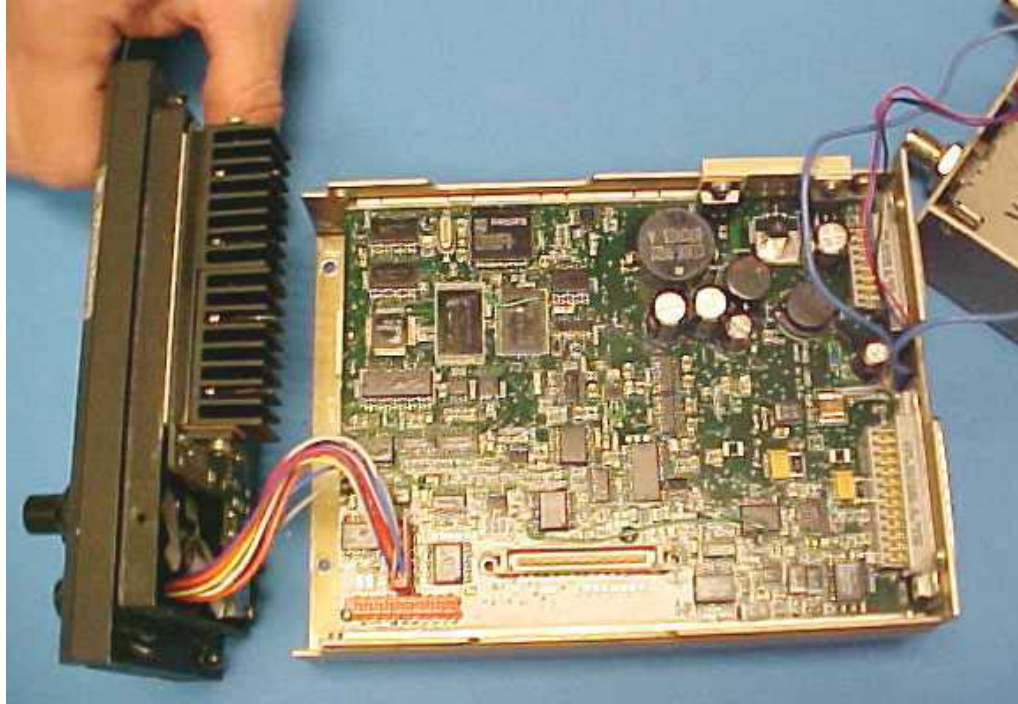
All versions of the P-2000/C-2000/RT-2000 Use the same internal connections and shielding as shown below:



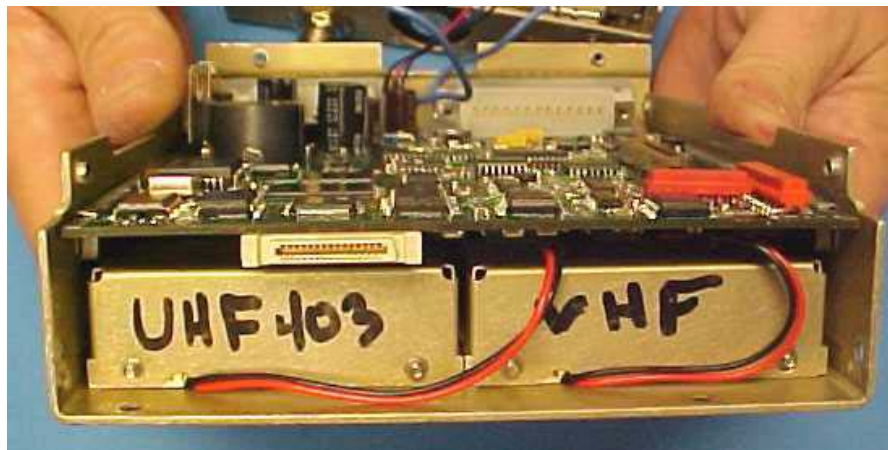
Unit Completely Assembled - Top View



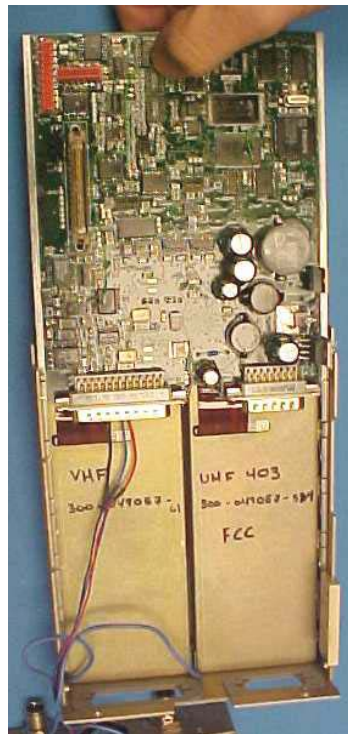
Unit Opened Showing Connection between Power Supply and CPU Board Ribbon Cable. Also Blue RF cables run from ITM module to Power Amp Modules.



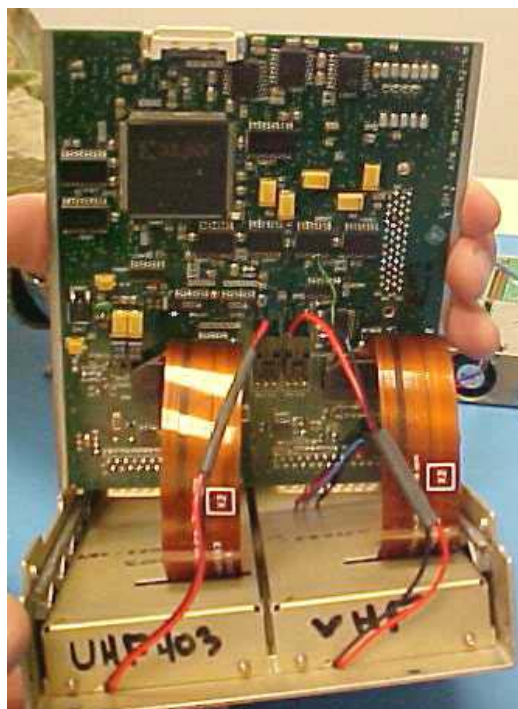
Step 3: Remove Front Panel/Display Assembly to show Front Loading Connector and CPU Board Connection Via Cable Assembly.



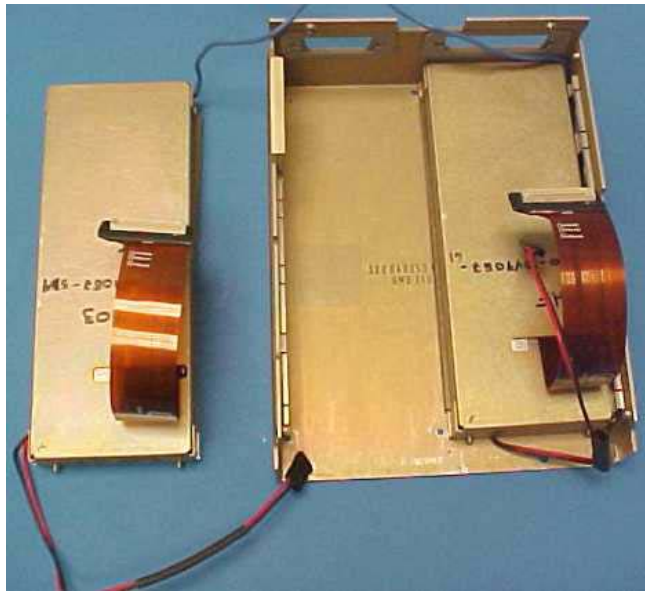
View of ITM modules located below the CPU board. The Black and Red wires provide 8VDC power to the ITM Modules.



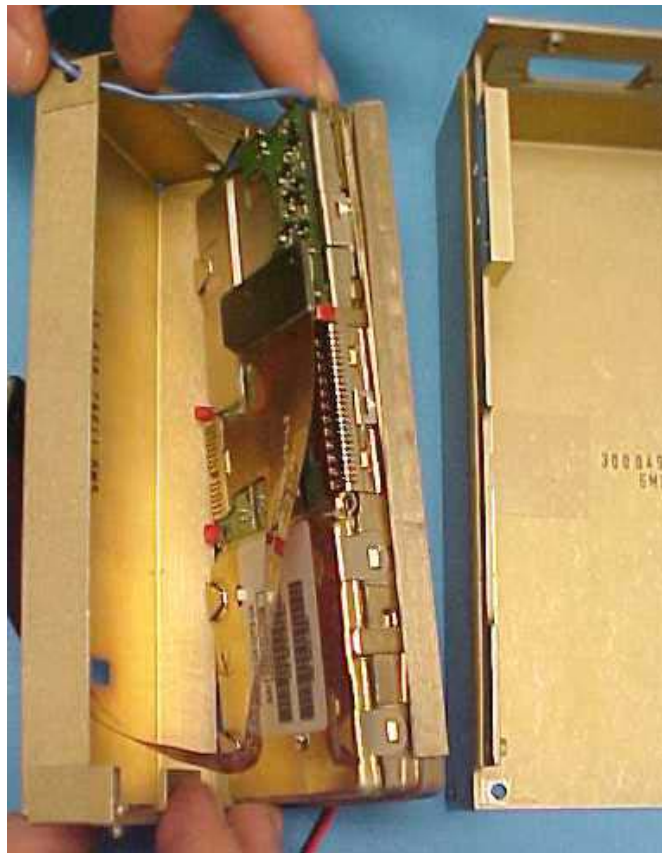
Step 4: Slide CPU Board Out To Reveal ITM Modules inside. Interconnect is accomplished with Flex-cables. One for each ITM Module.



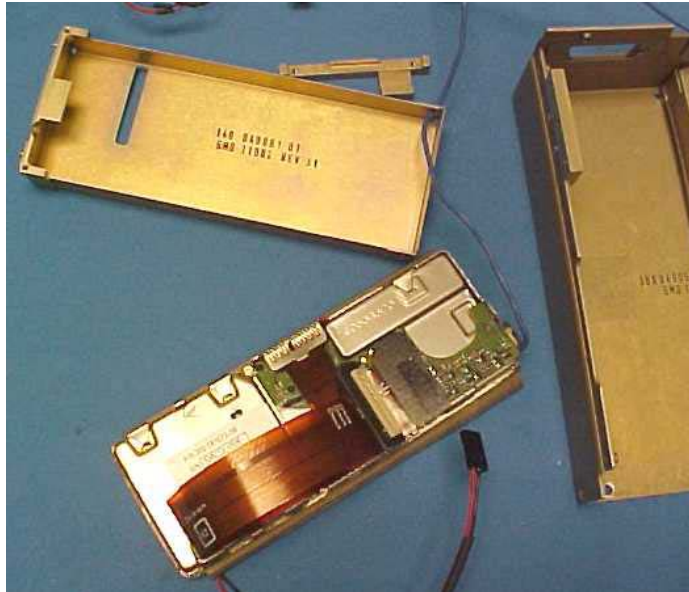
View of Flex-cables and Power cables from each ITM to the CPU Board



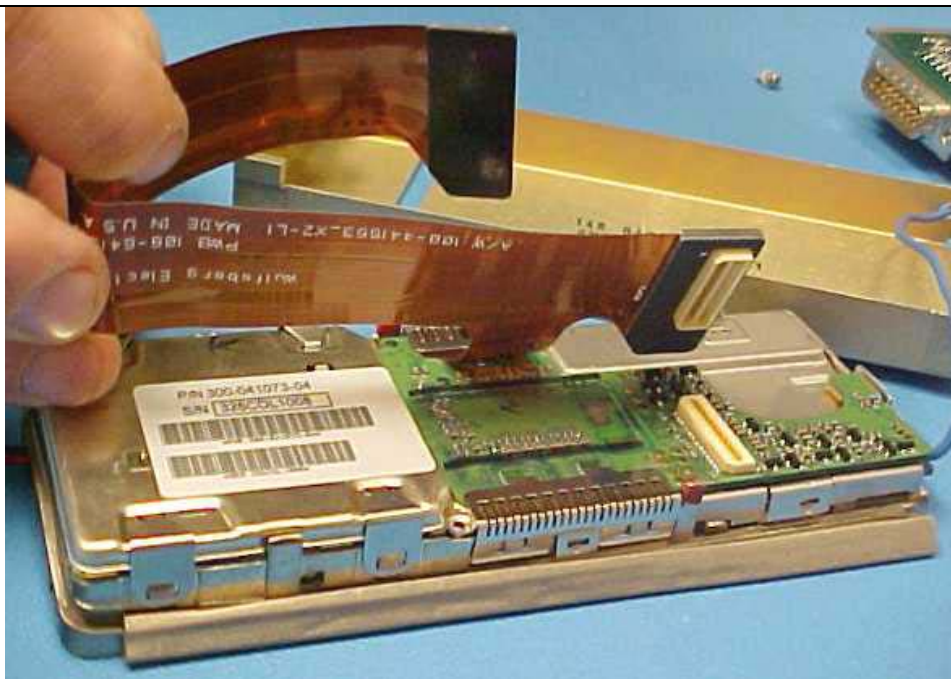
Step 5: CPU board completely removed. One ITM and Cover has been removed from chassis.



Step 6: ITM Cover removed reveals the ITM module inside with ribbon cable and blue RF cable.



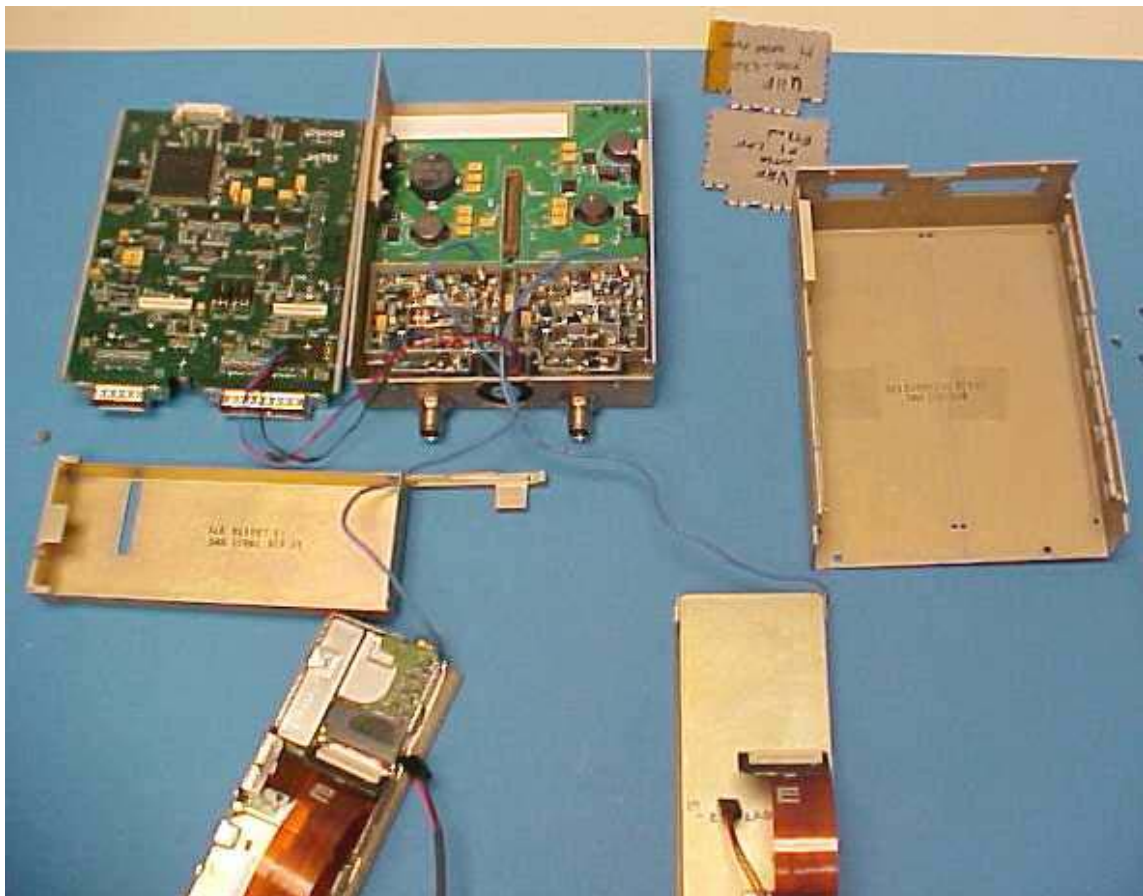
Step 7: ITM Module without Cover



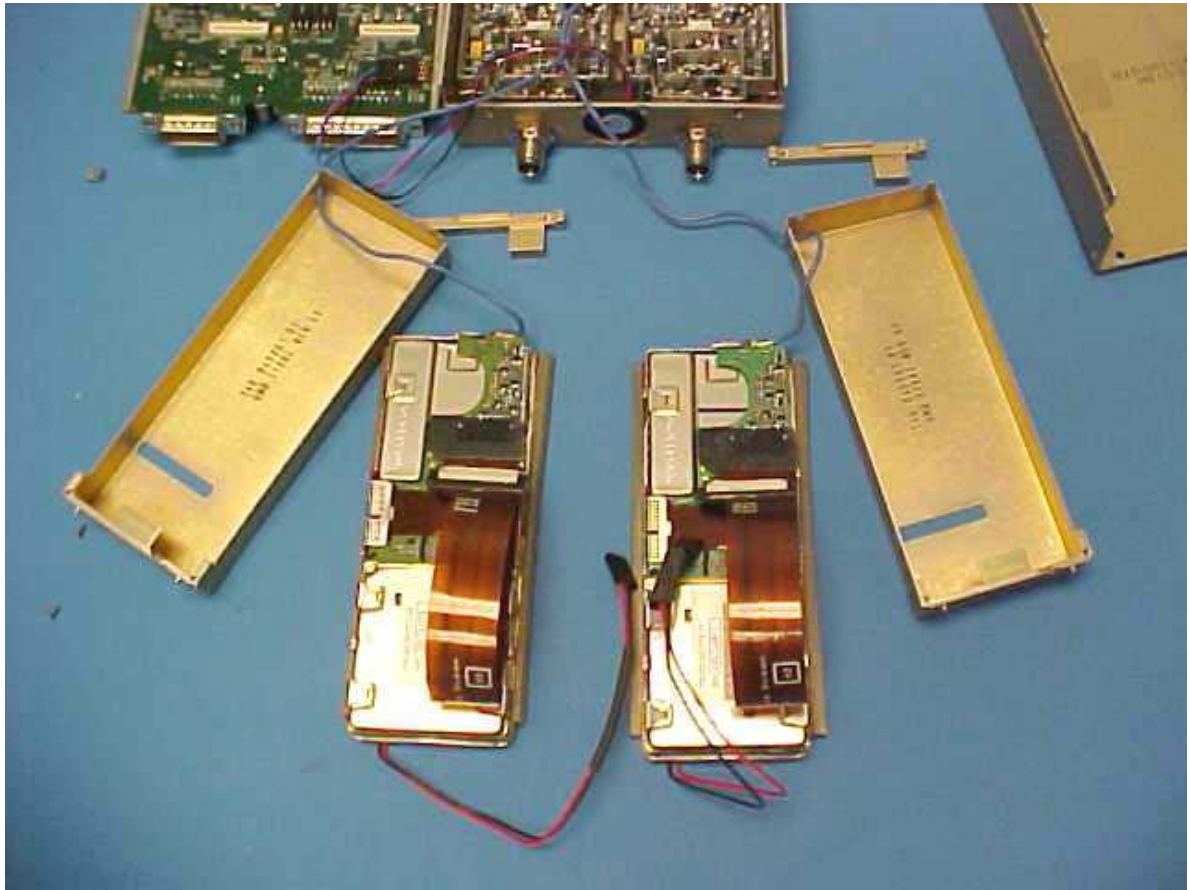
View of ITM end of the Flex-cable.



View of Power cables on underside of ITM



Step 8: System with covers removed from Power Amplifier Modules.



Step 9: Both ITM Modules with covers removed

Internal Photos Of Complete Assembly

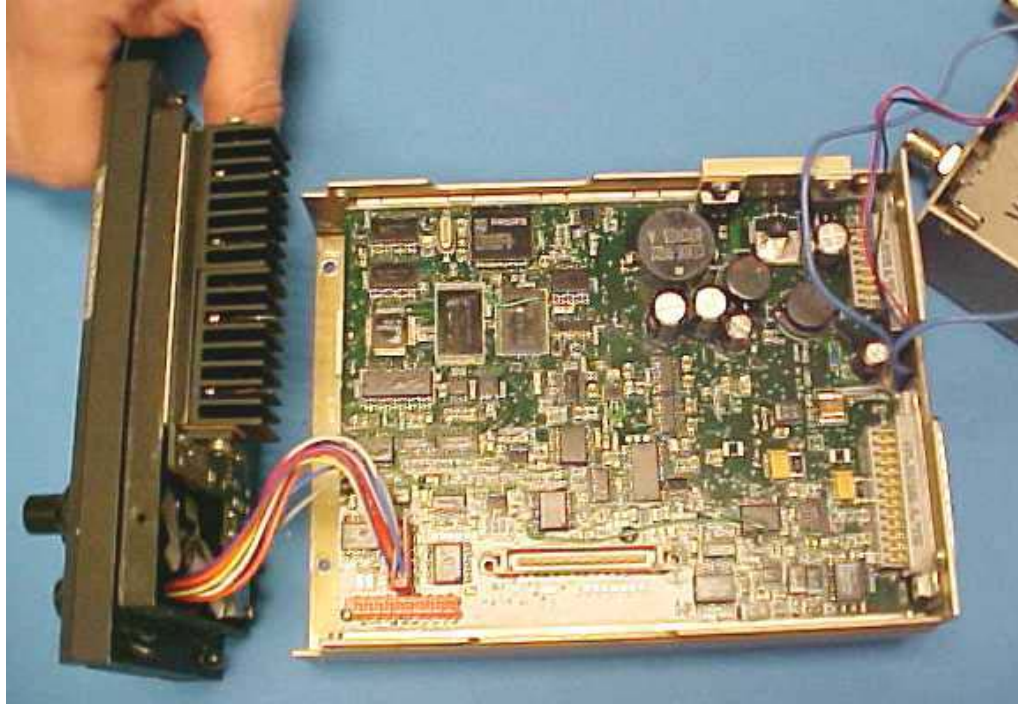
All versions of the P-2000/C-2000/RT-2000 Use the same internal connections and shielding as shown below:



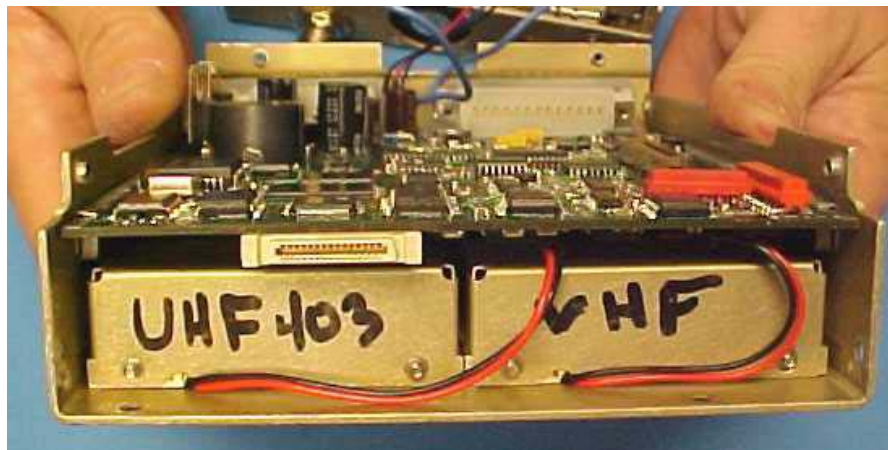
Unit Completely Assembled - Top View



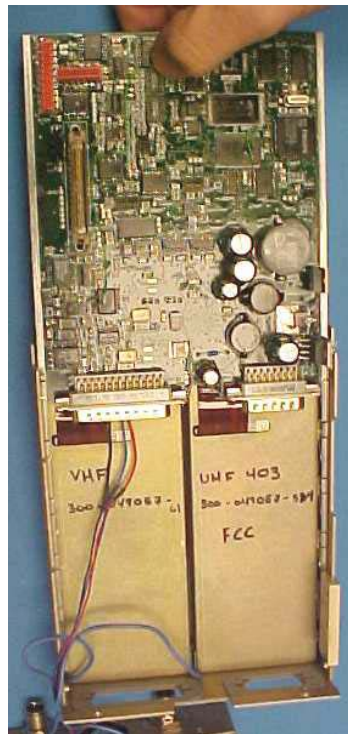
Unit Opened Showing Connection between Power Supply and CPU Board Ribbon Cable. Also Blue RF cables run from ITM module to Power Amp Modules.



Step 3: Remove Front Panel/Display Assembly to show Front Loading Connector and CPU Board Connection Via Cable Assembly.



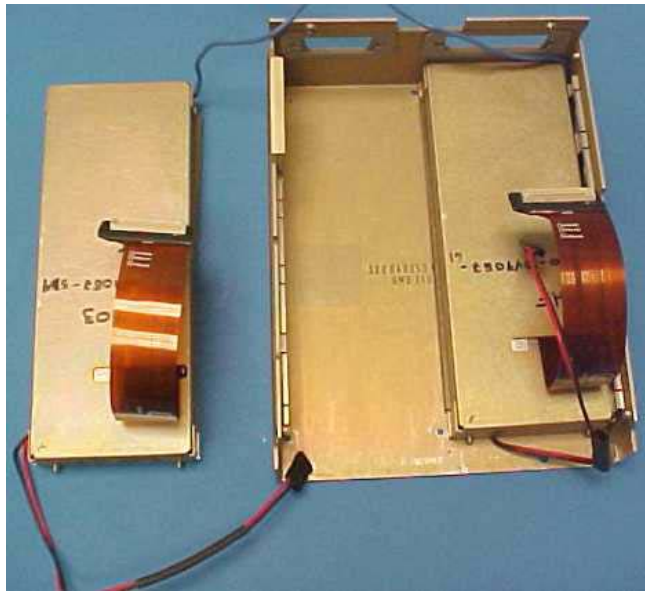
View of ITM modules located below the CPU board. The Black and Red wires provide 8VDC power to the ITM Modules.



Step 4: Slide CPU Board Out To Reveal ITM Modules inside. Interconnect is accomplished with Flex-cables. One for each ITM Module.



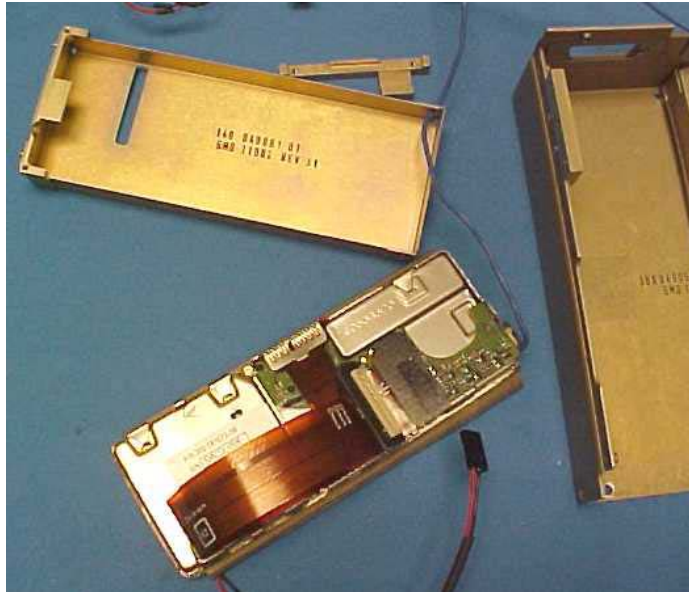
View of Flex-cables and Power cables from each ITM to the CPU Board



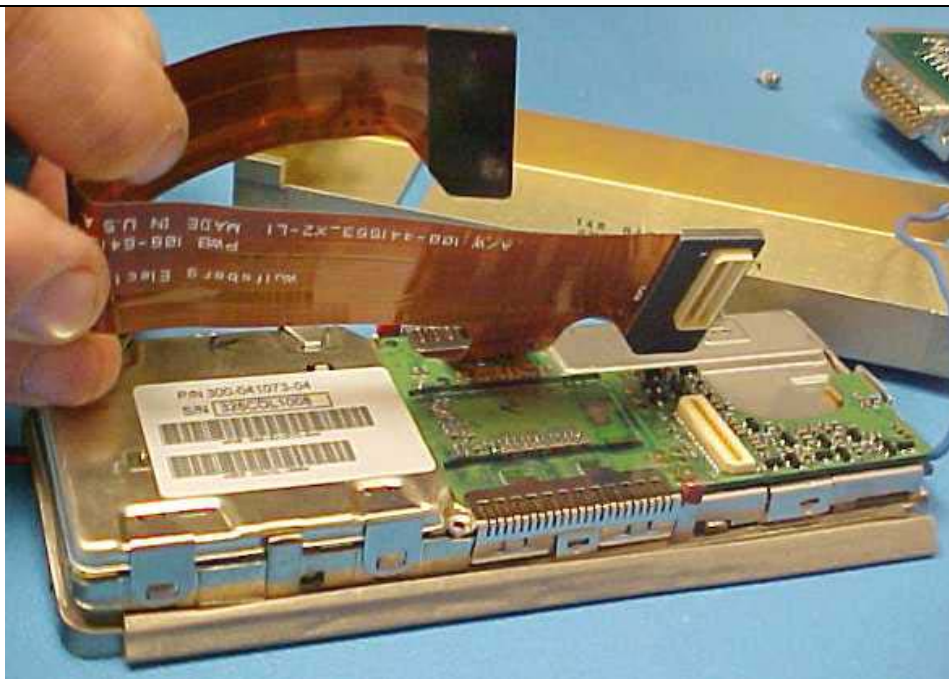
Step 5: CPU board completely removed. One ITM and Cover has been removed from chassis.



Step 6: ITM Cover removed reveals the ITM module inside with ribbon cable and blue RF cable.



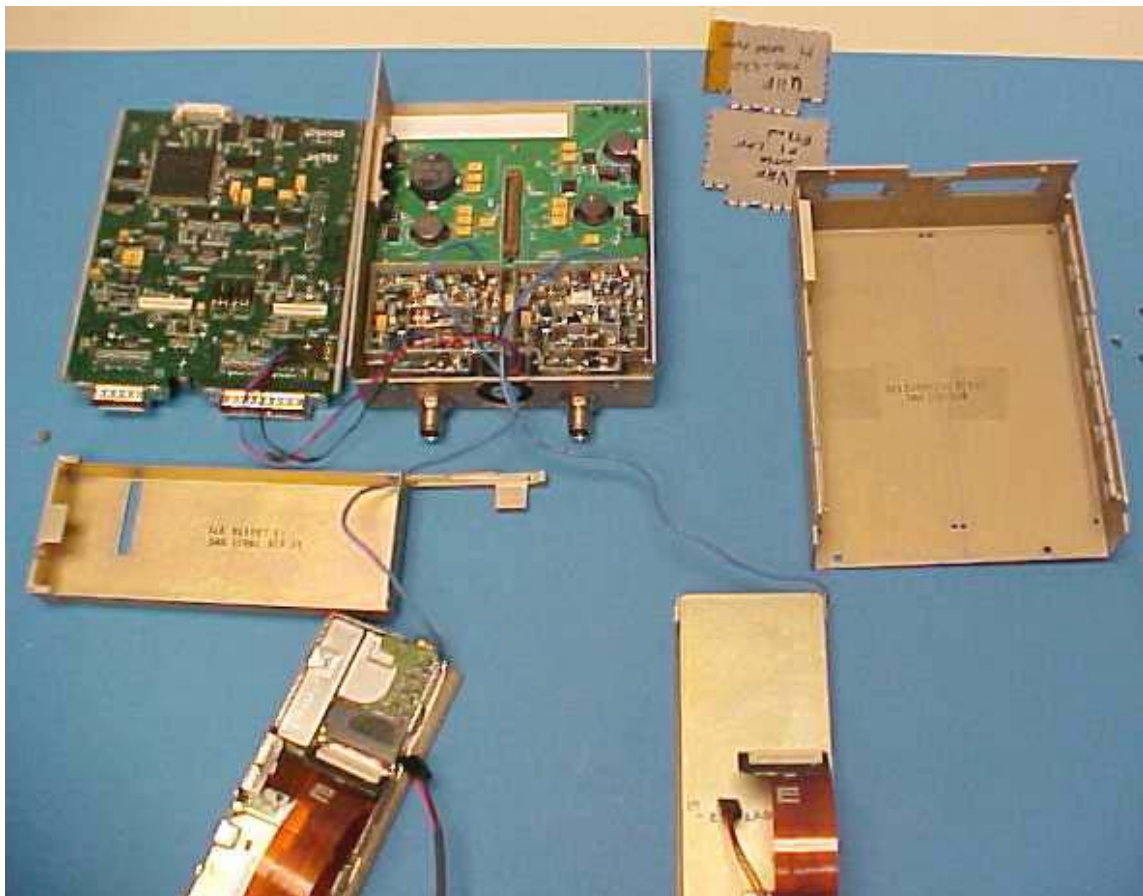
Step 7: ITM Module without Cover



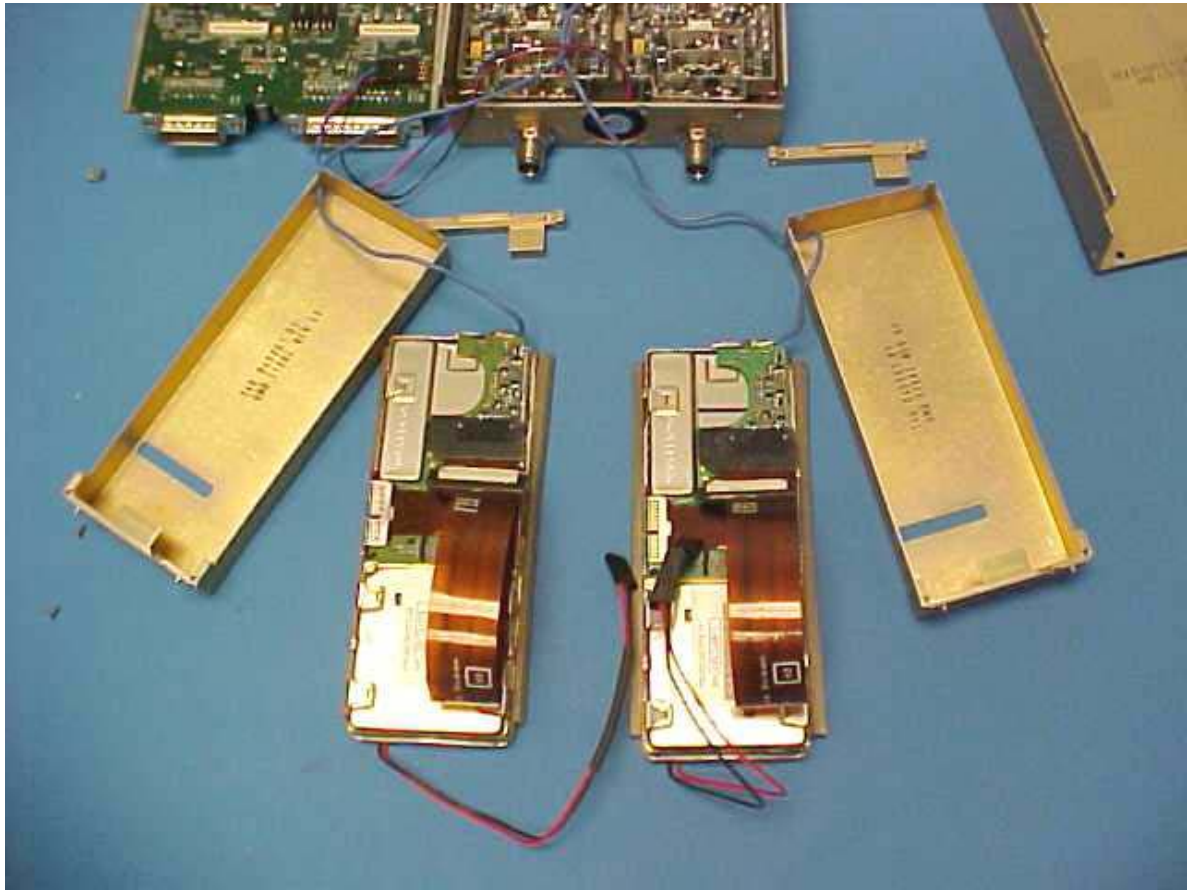
View of ITM end of the Flex-cable.



View of Power cables on underside of ITM

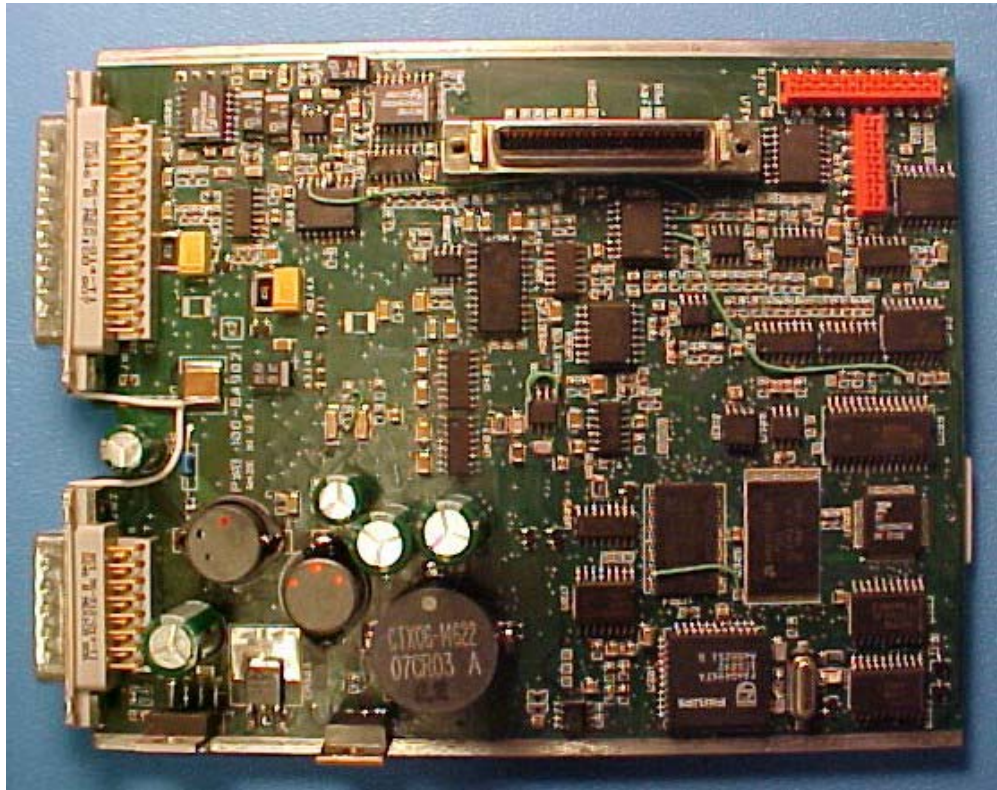


Step 8: System with covers removed from Power Amplifier Modules.

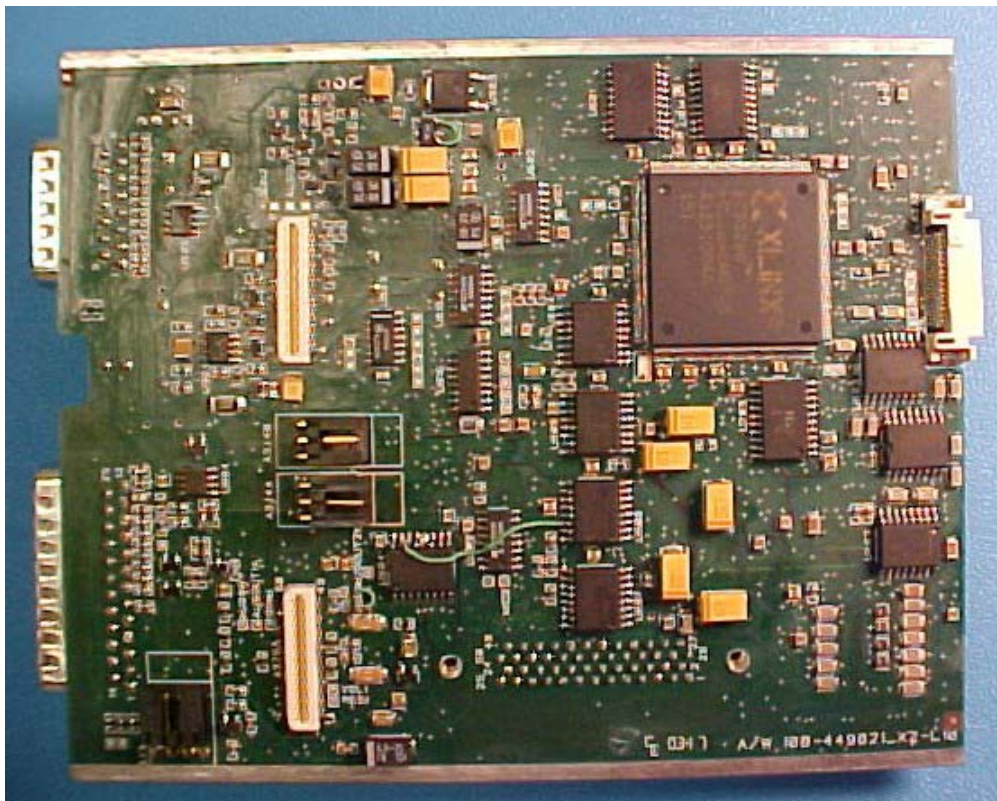


Step 9: Both ITM Modules with covers removed

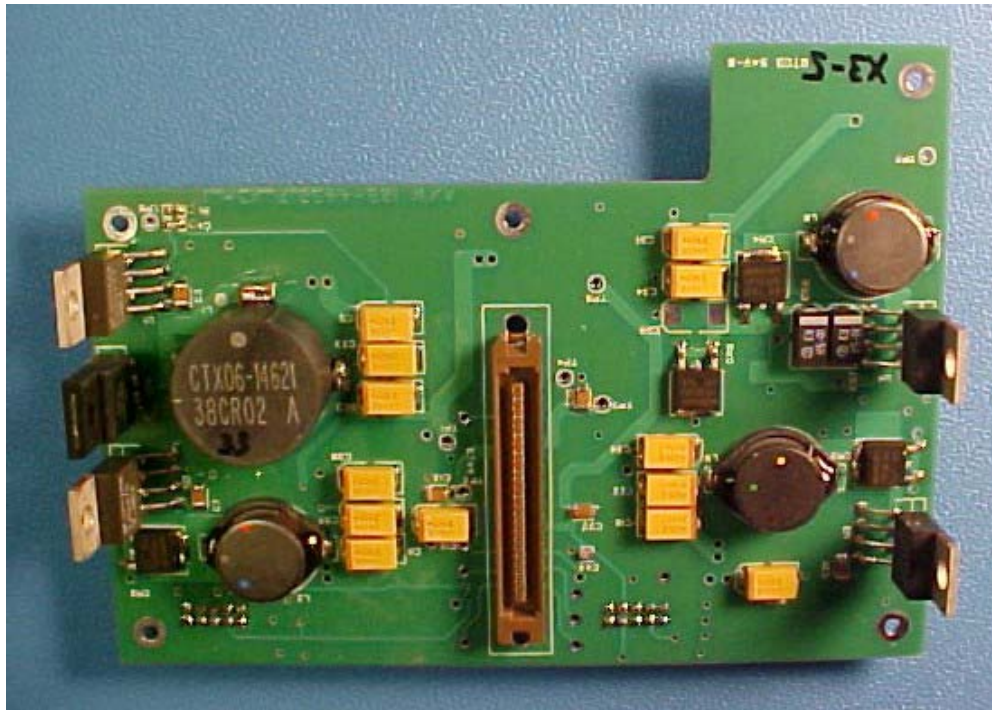
FRW2000-VHFA: Internal Photos



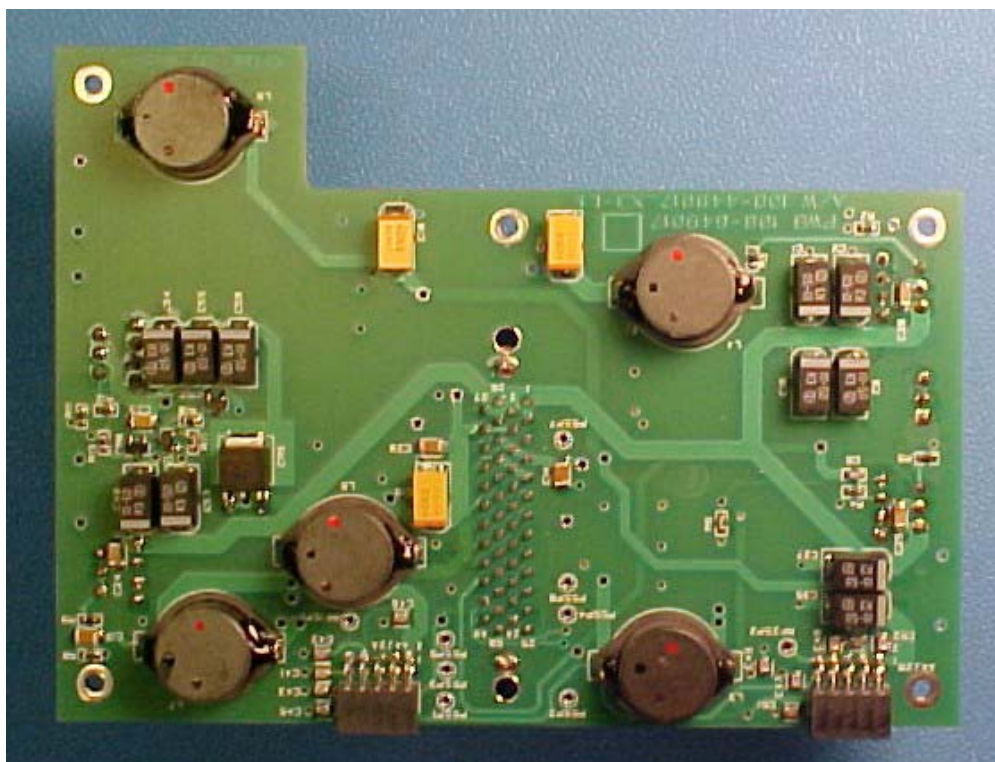
CPU Board - Top View



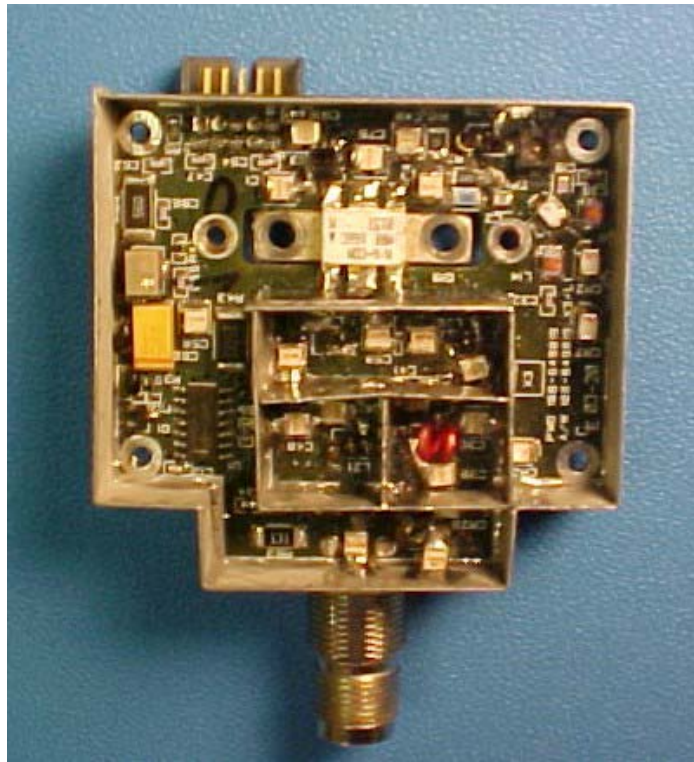
CPU Board - Bottom View



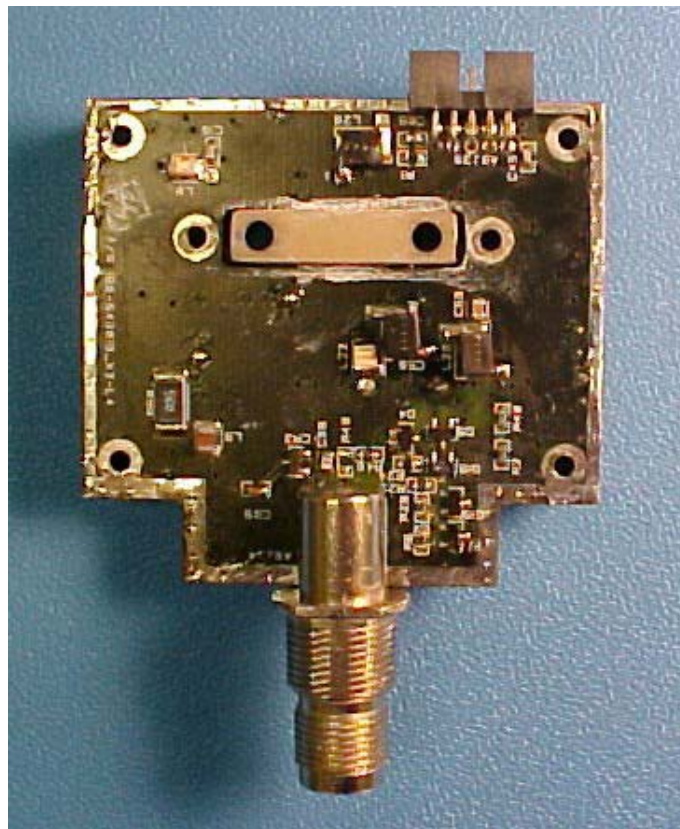
Power Supply Board - Top View



Power Supply Board - Bottom View



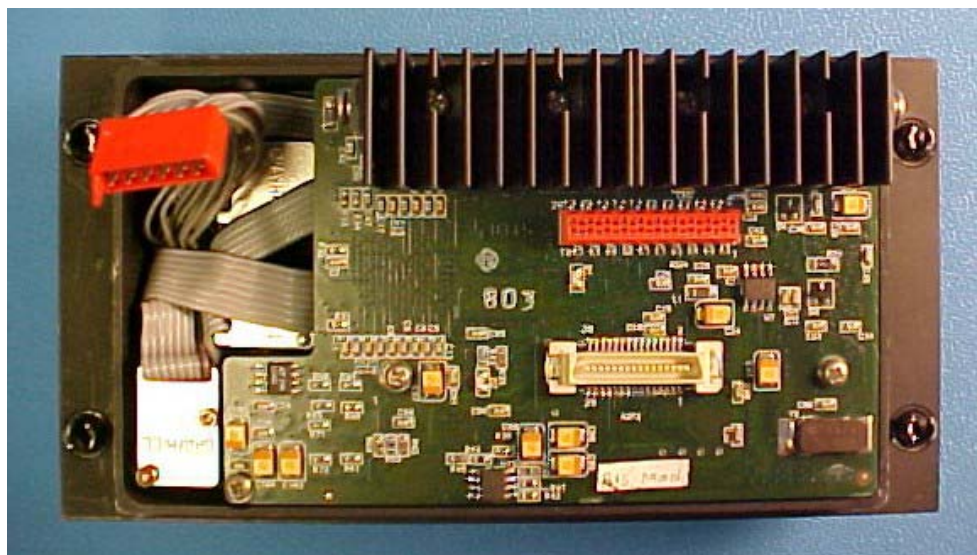
VHF Power Amp - Top View



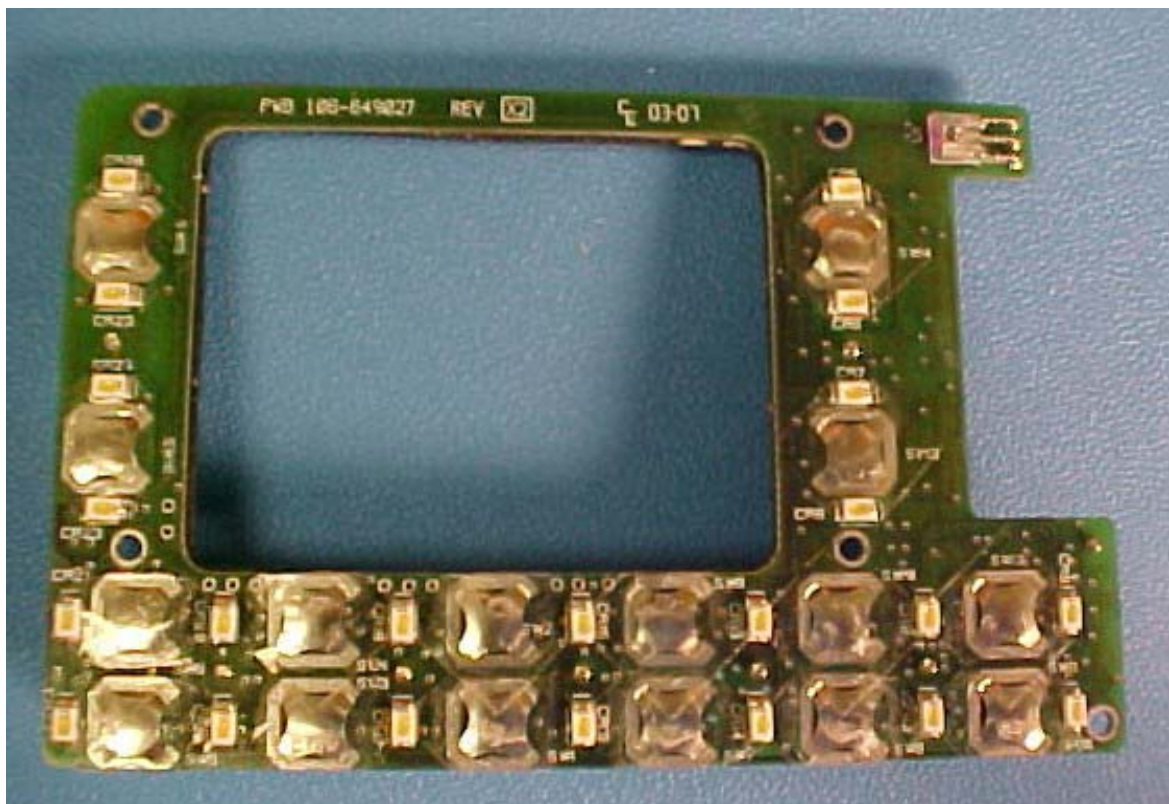
VHF Power Amp Board - Bottom View



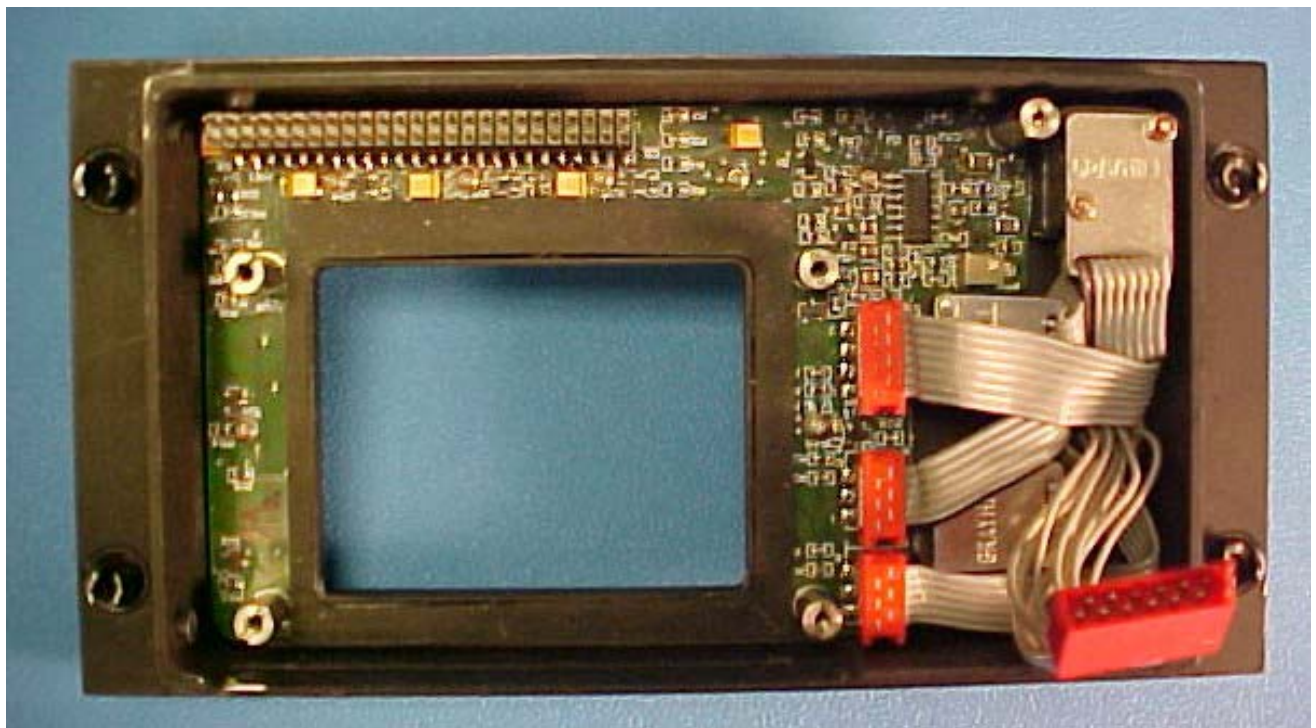
Display Board - Top View



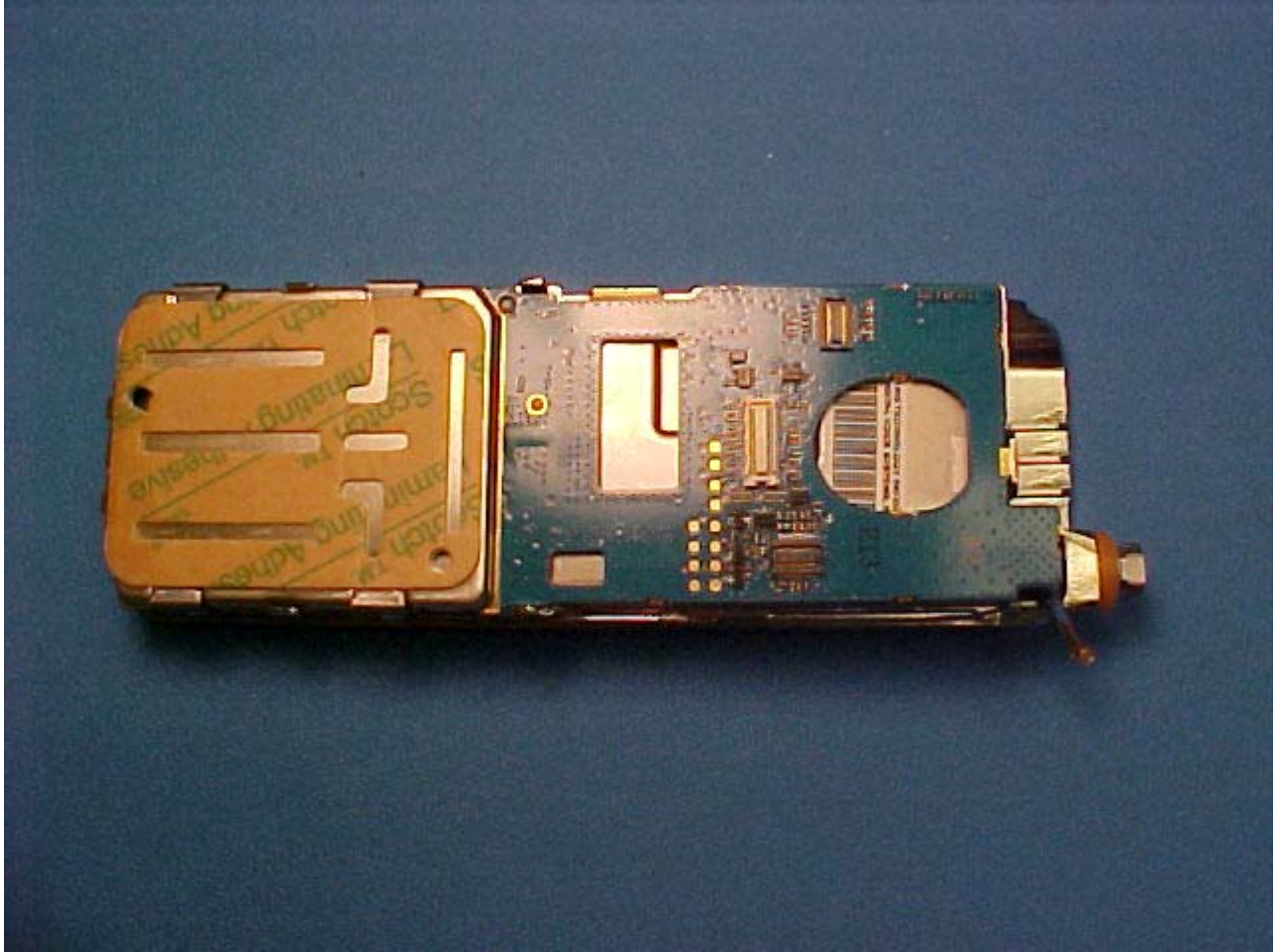
Display Board - Bottom View



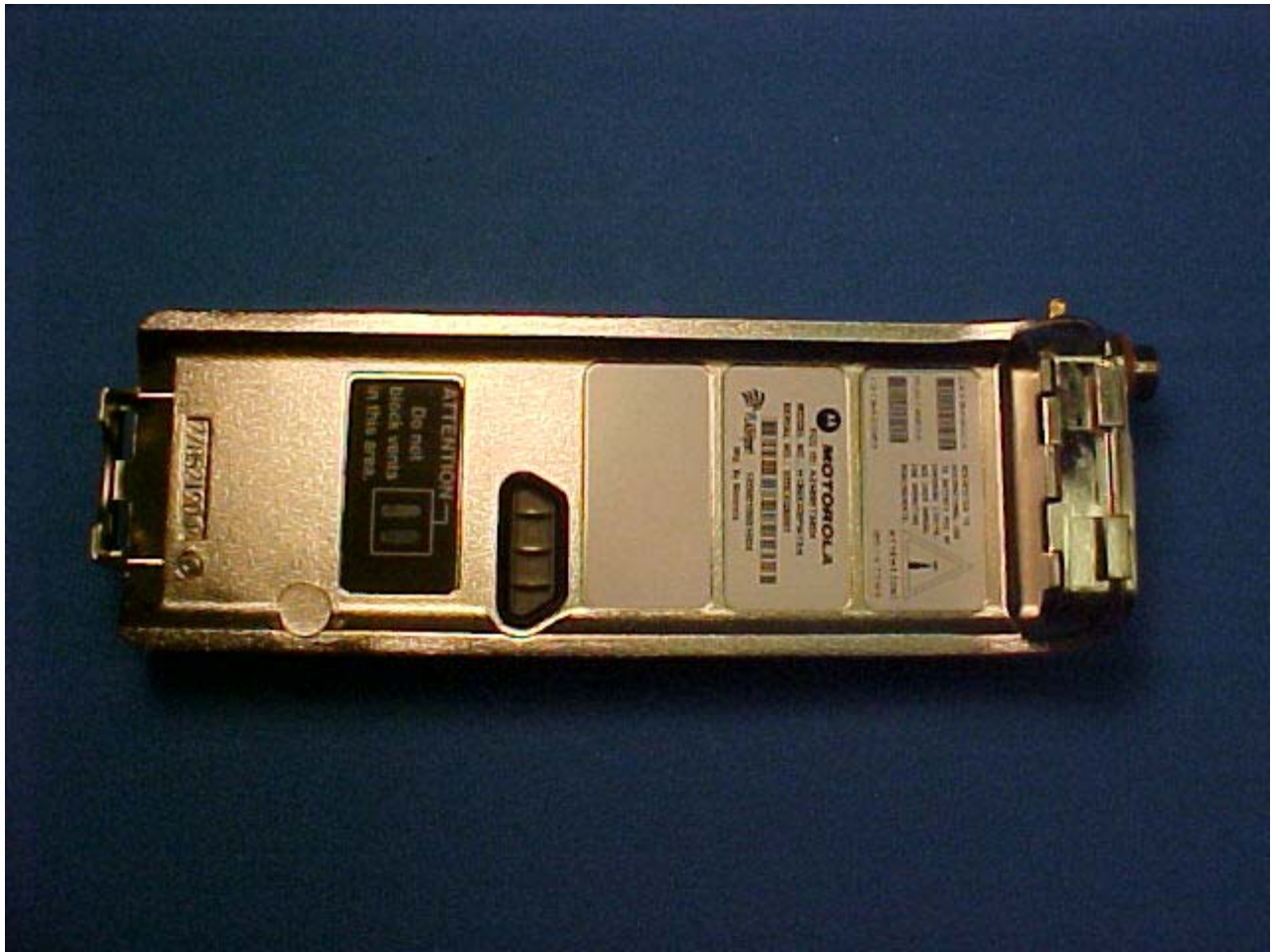
Switch Board - Top View



Switch Board - Bottom View



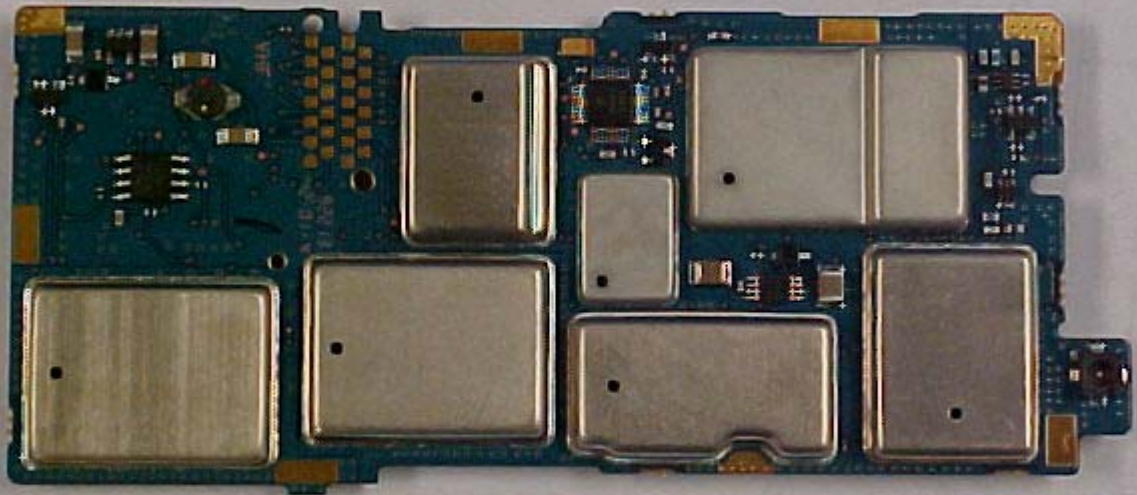
VHF Integrated Transceiver Module - Top View



VHF Integrated Transceiver Module - Bottom View



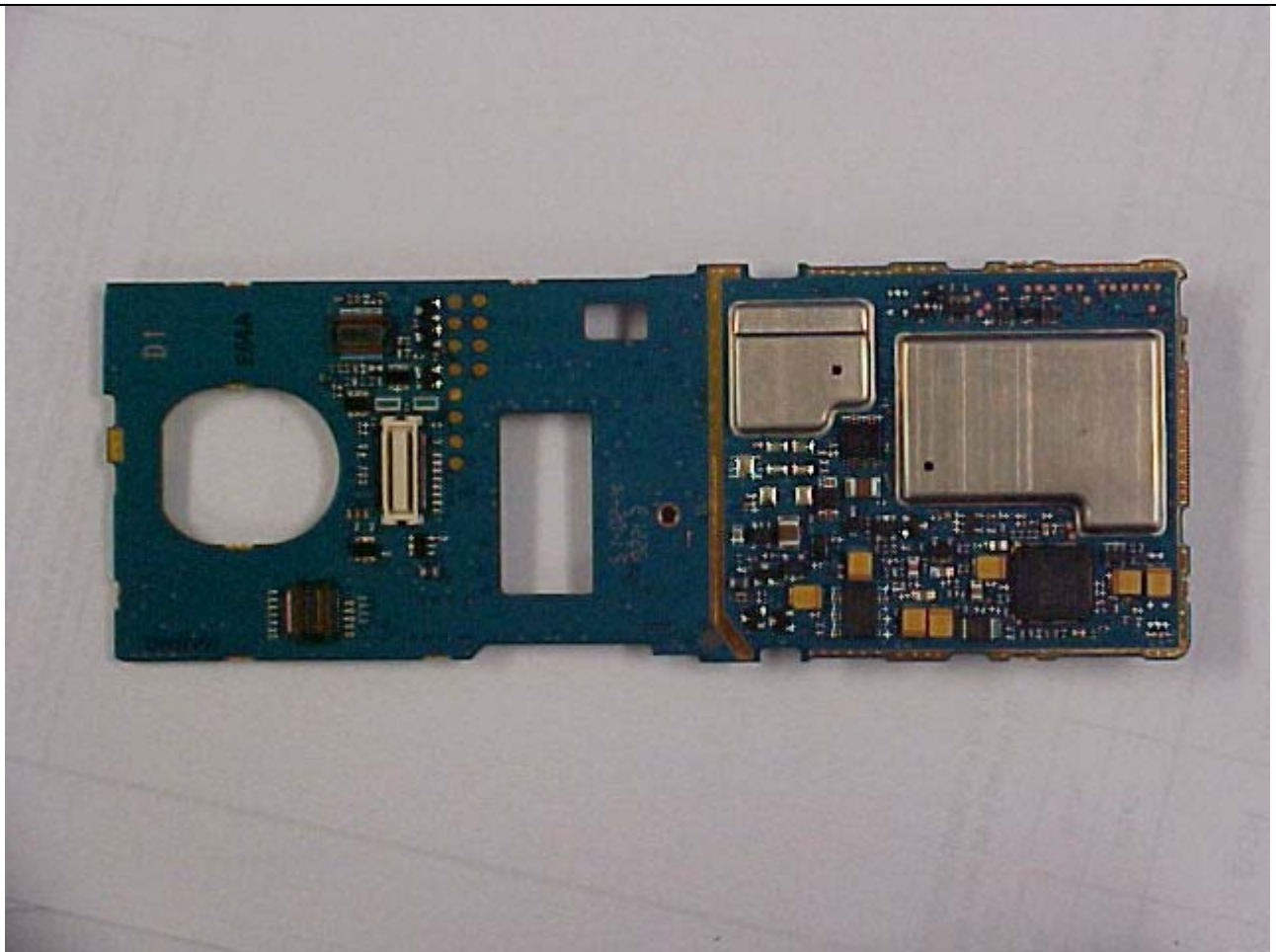
VHF Integrated Transceiver Module: FCC ID- AZ489FT3804



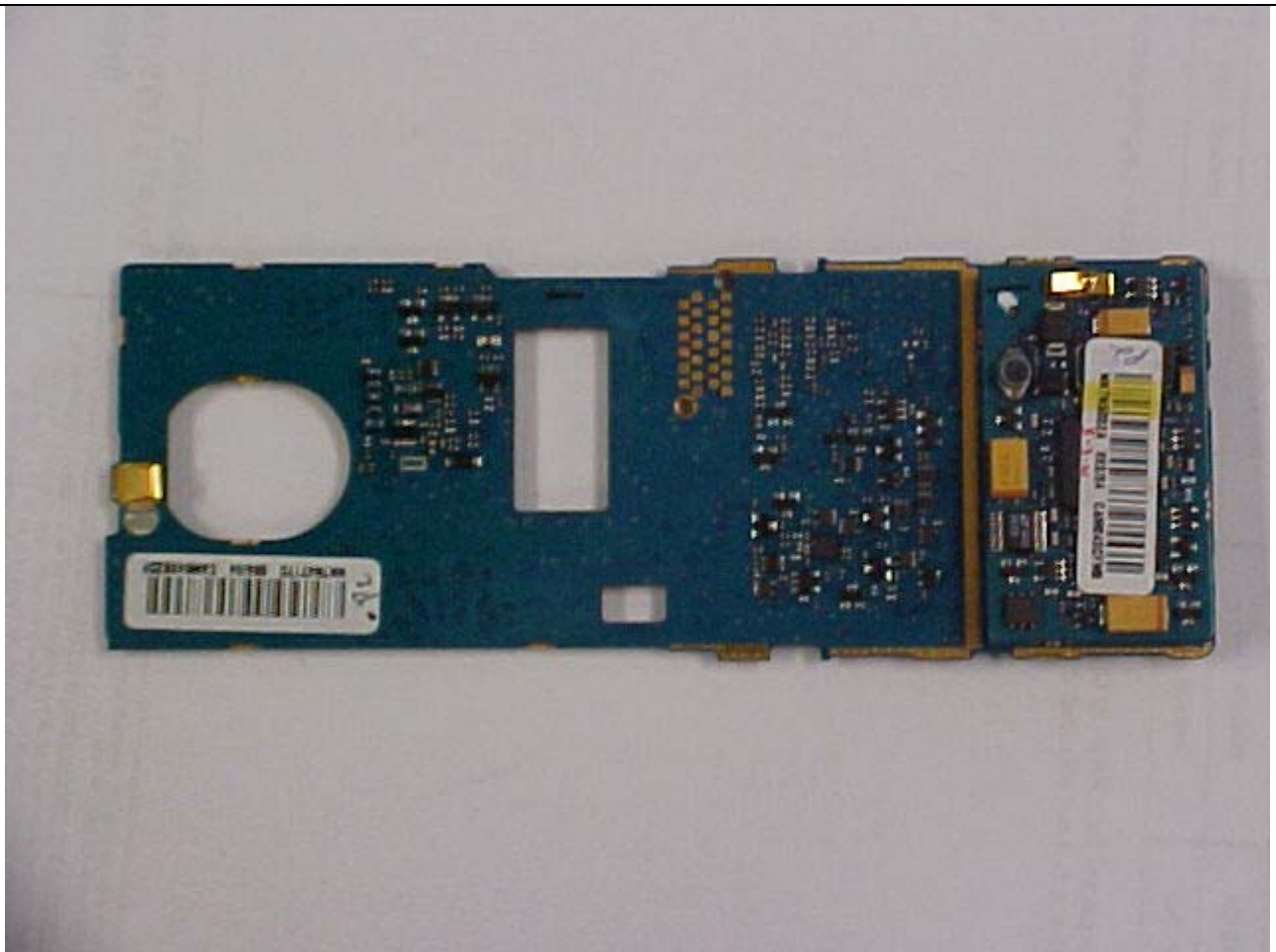
VHF MHz Integrated Transceiver Module – Transceiver Board Top View



VHF MHz Integrated Transceiver Module – Transceiver Board Bottom View

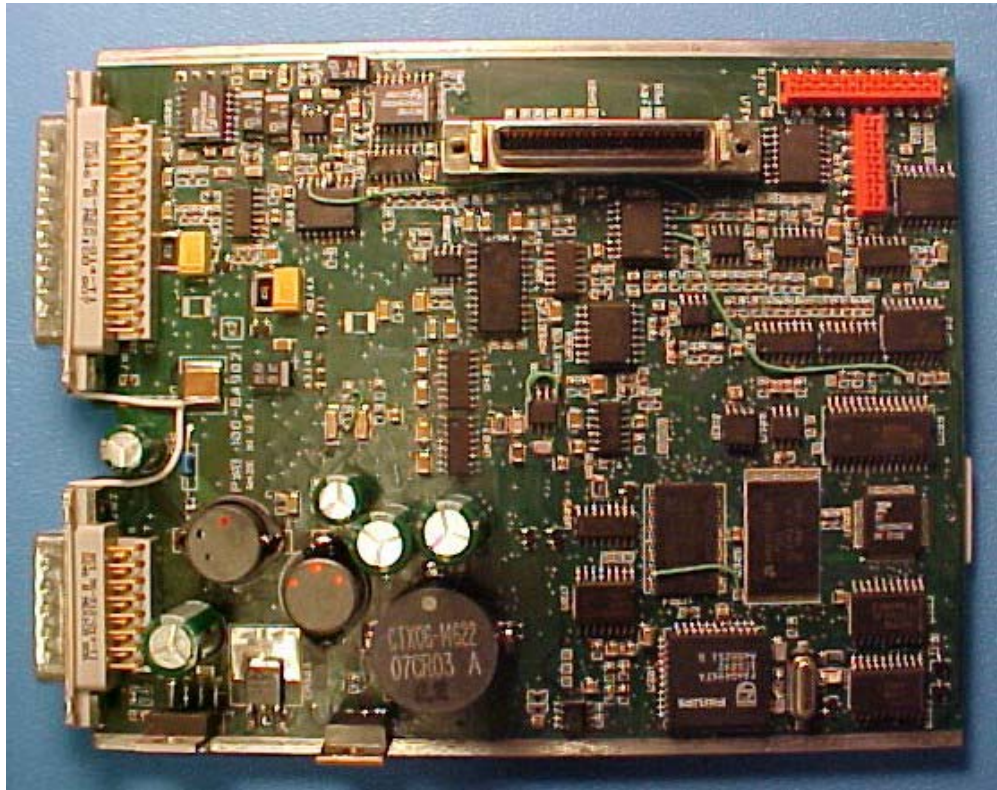


VHF MHz Integrated Transceiver Module – Vocon Board Top View

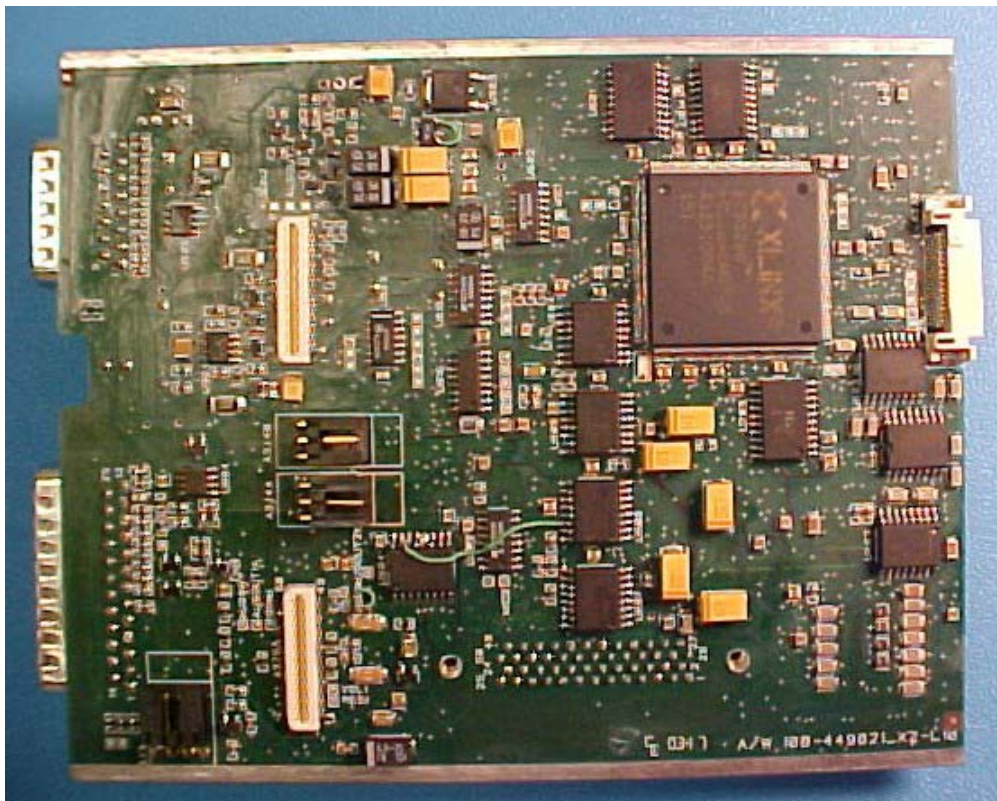


VHF MHz Integrated Transceiver Module – Vocon Board Bottom View

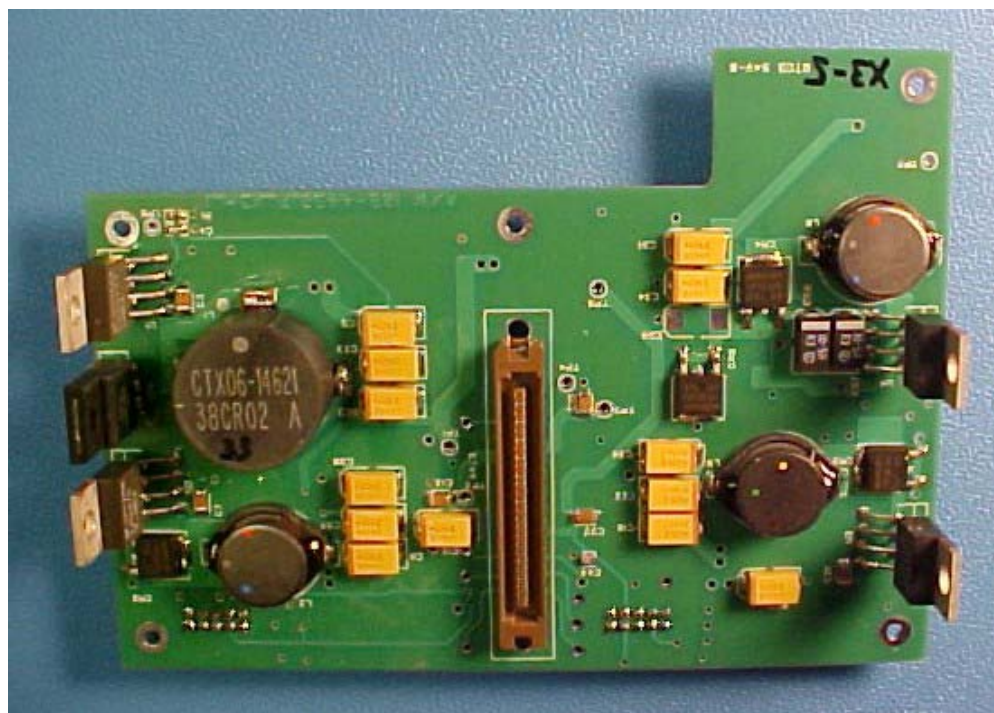
FRW2000-VHFA: Internal Photos



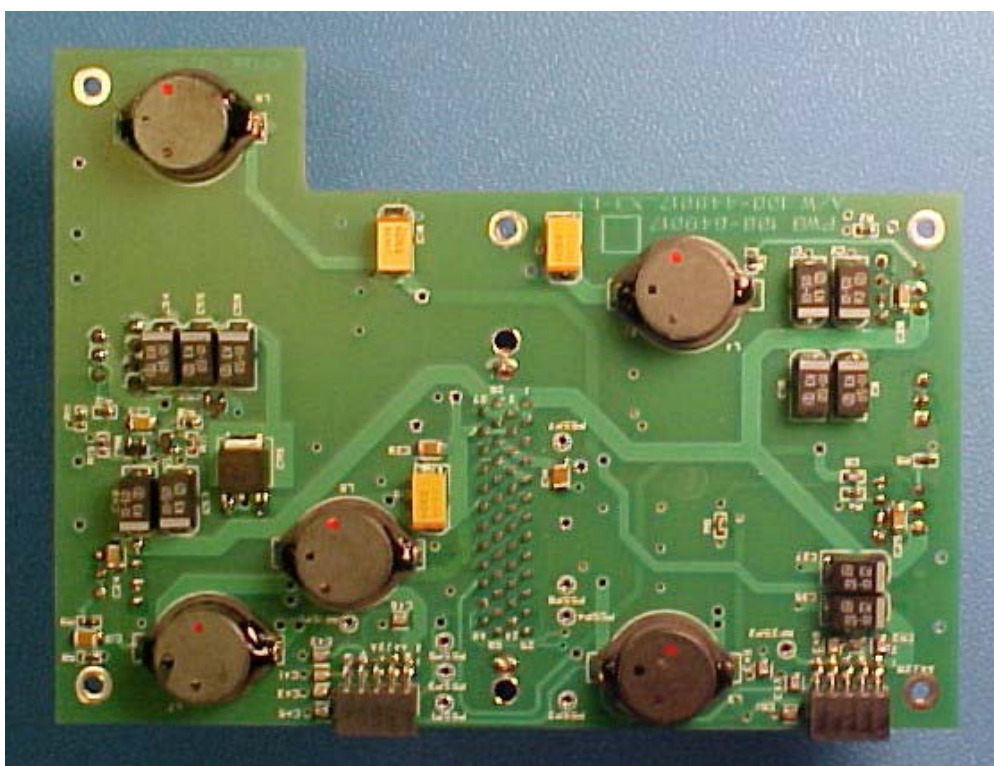
CPU Board - Top View



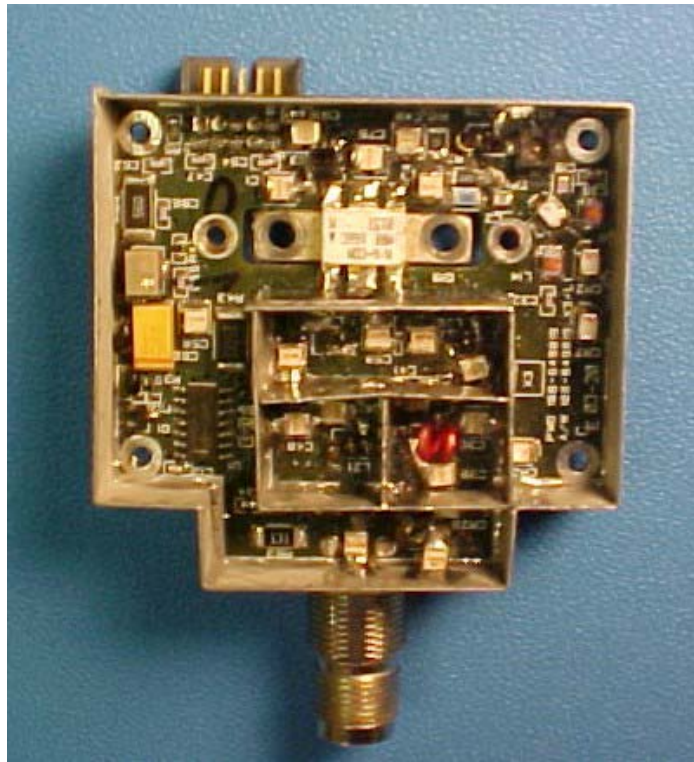
CPU Board - Bottom View



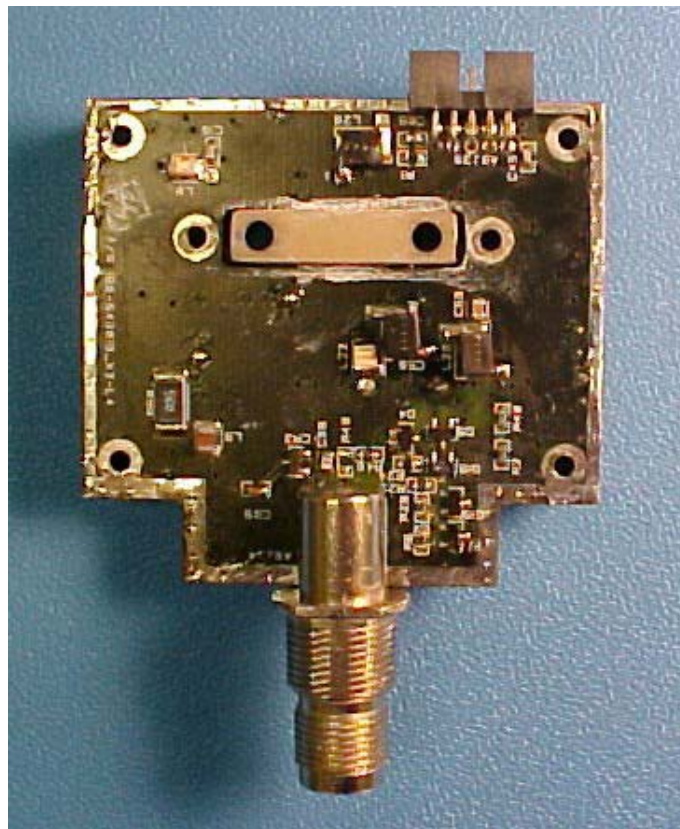
Power Supply Board - Top View



Power Supply Board - Bottom View



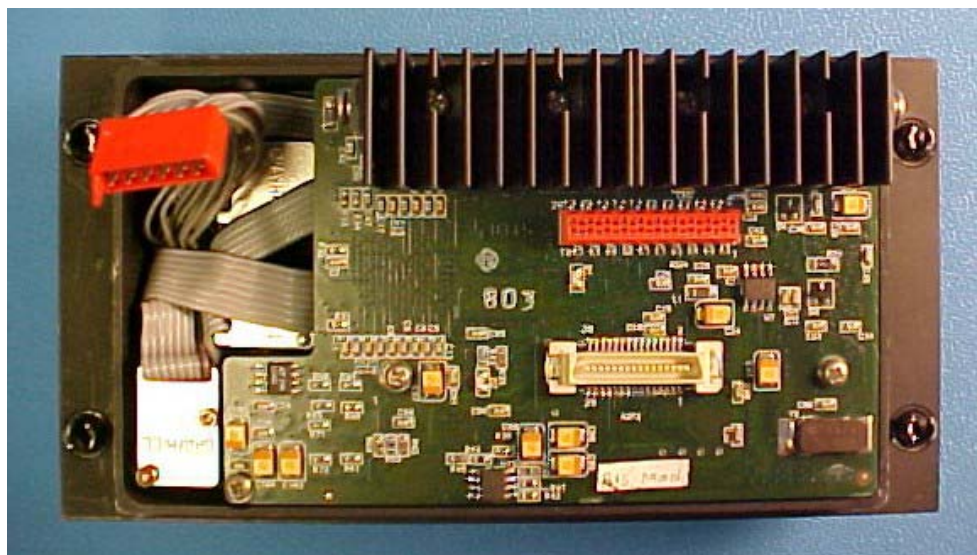
VHF Power Amp - Top View



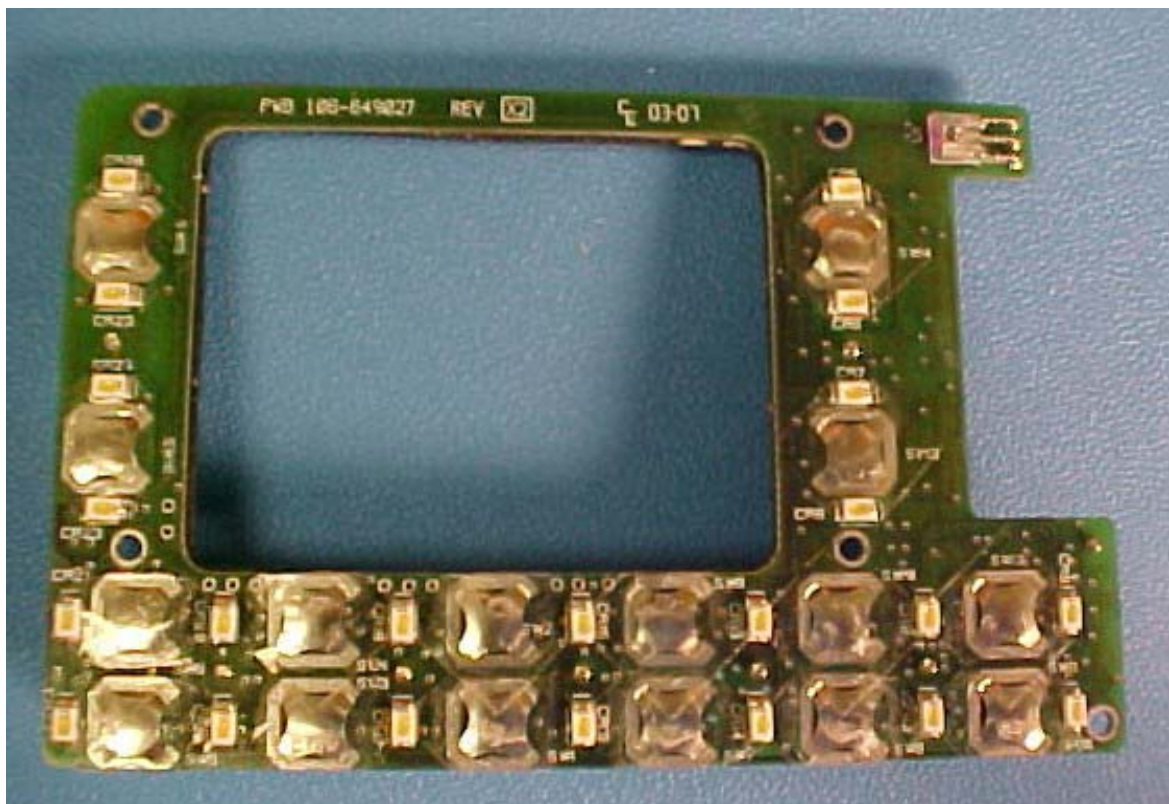
VHF Power Amp Board - Bottom View



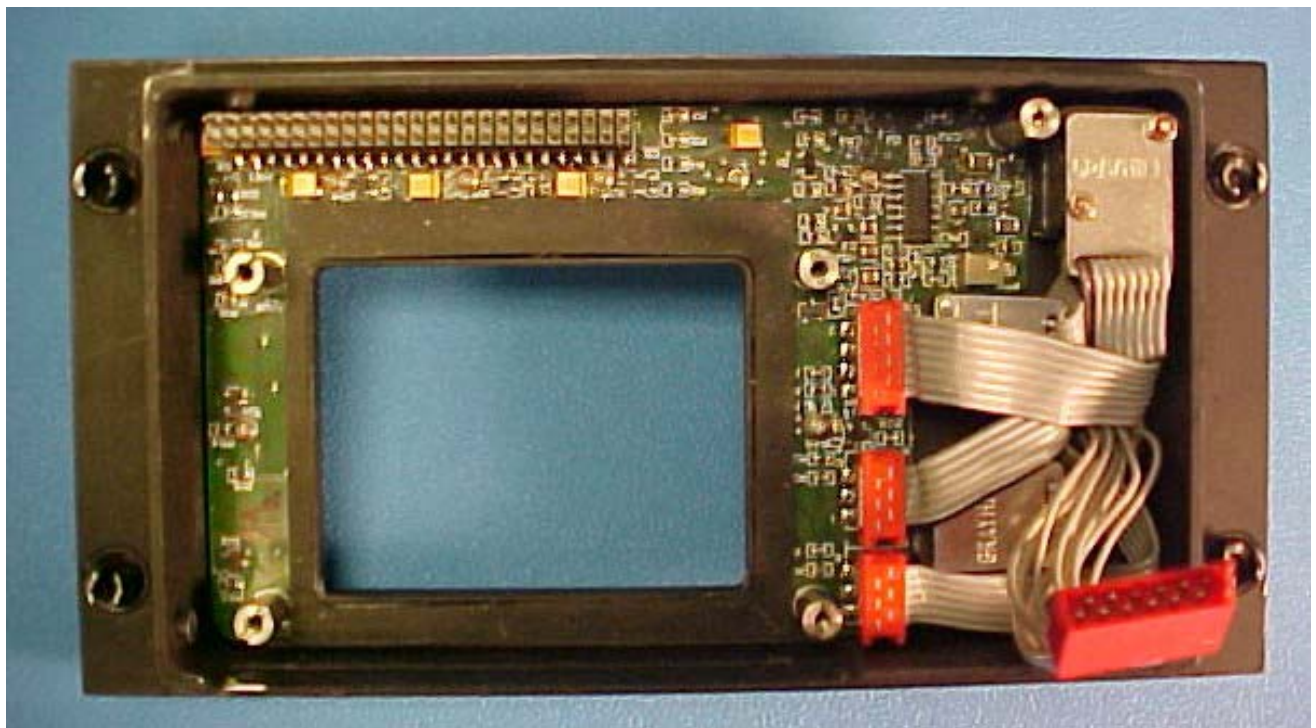
Display Board - Top View



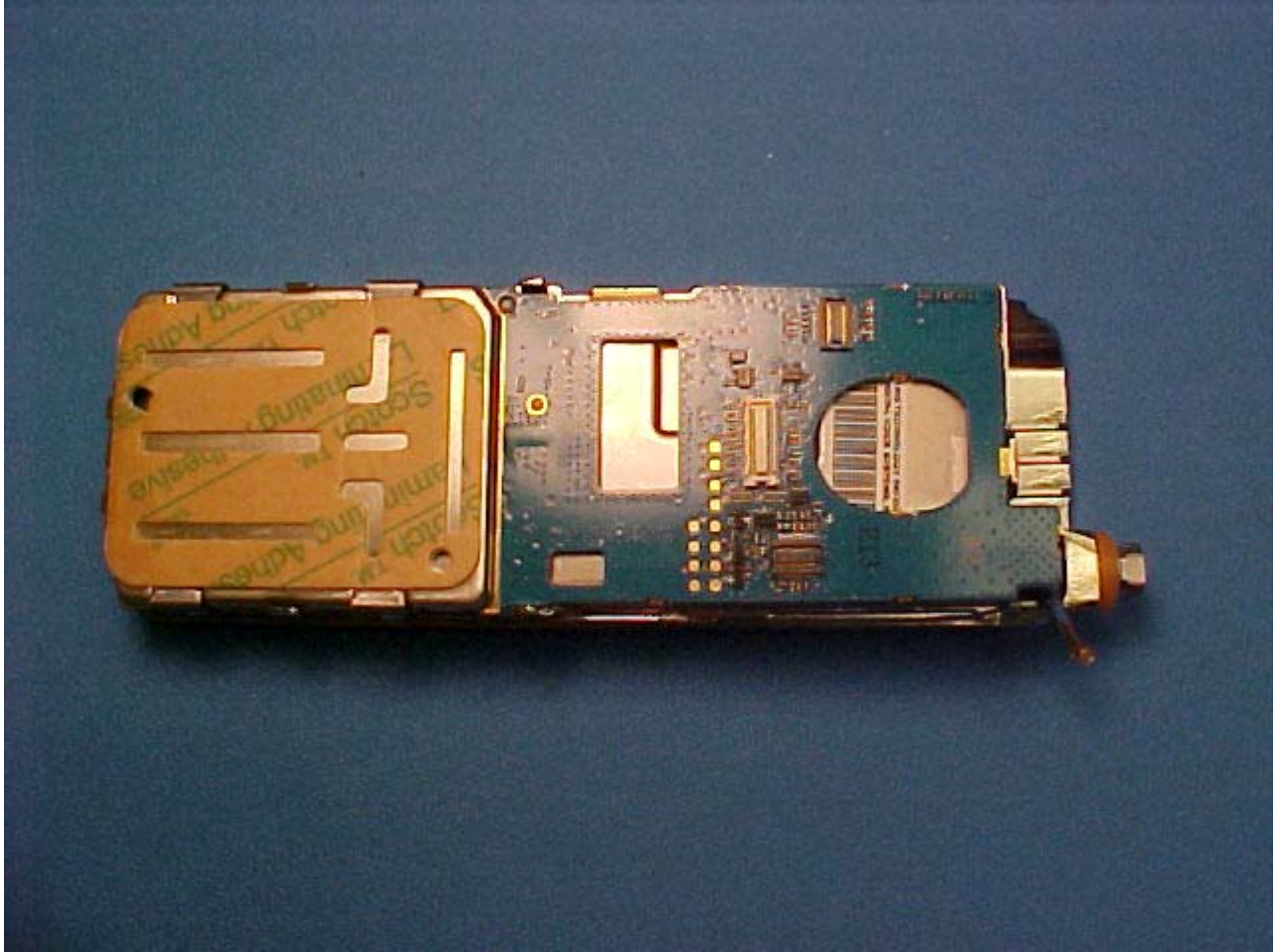
Display Board - Bottom View



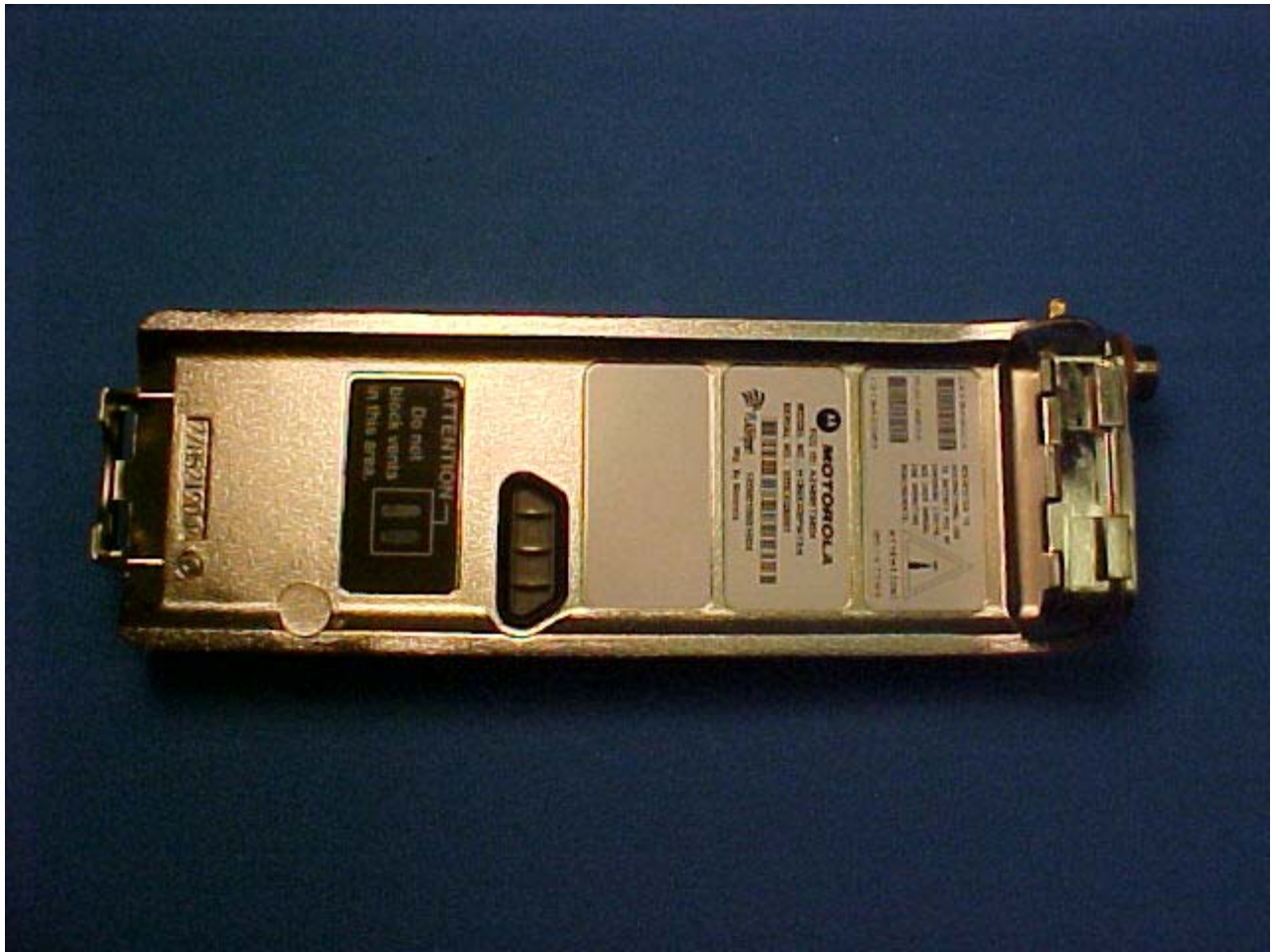
Switch Board - Top View



Switch Board - Bottom View



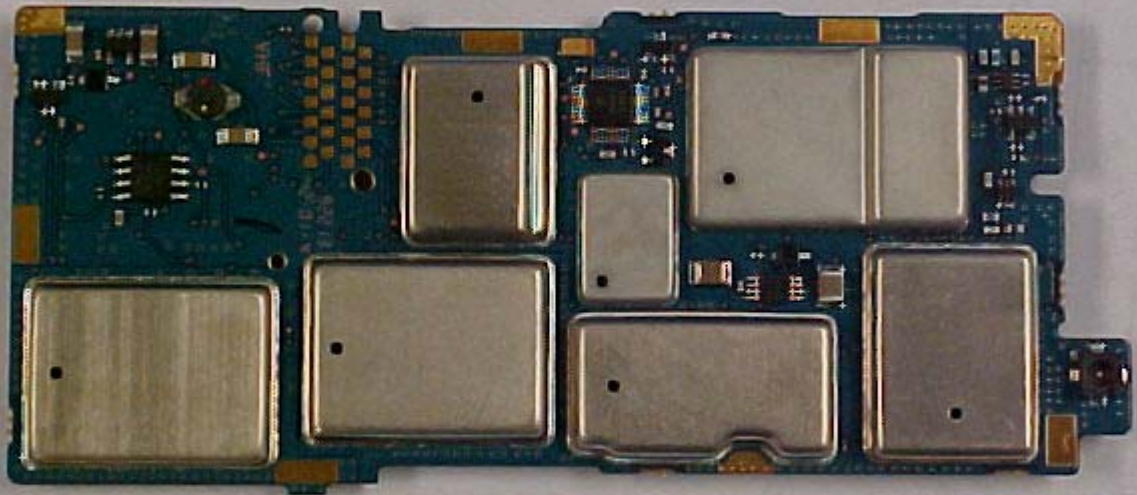
VHF Integrated Transceiver Module - Top View



VHF Integrated Transceiver Module - Bottom View



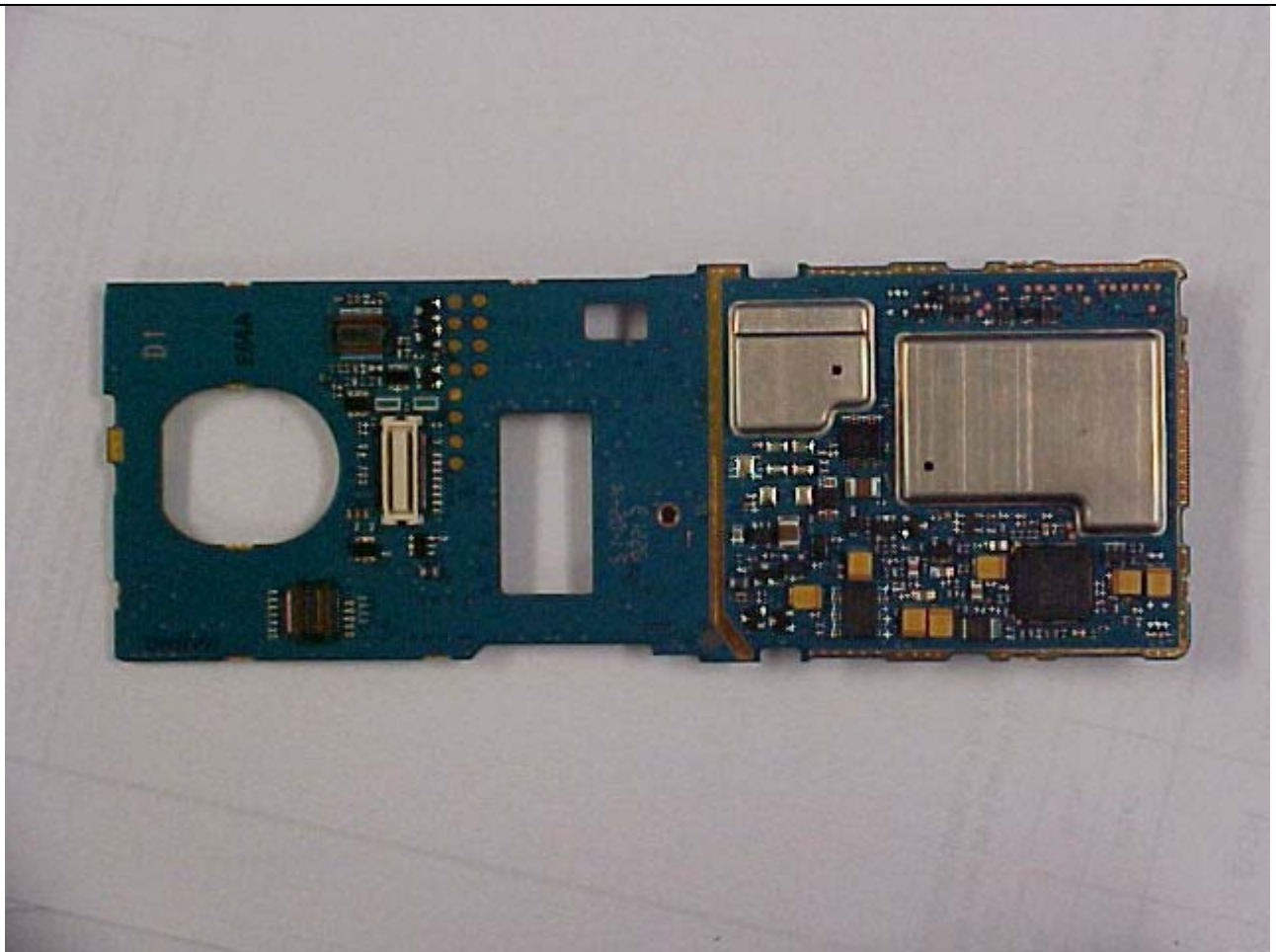
VHF Integrated Transceiver Module: FCC ID- AZ489FT3804



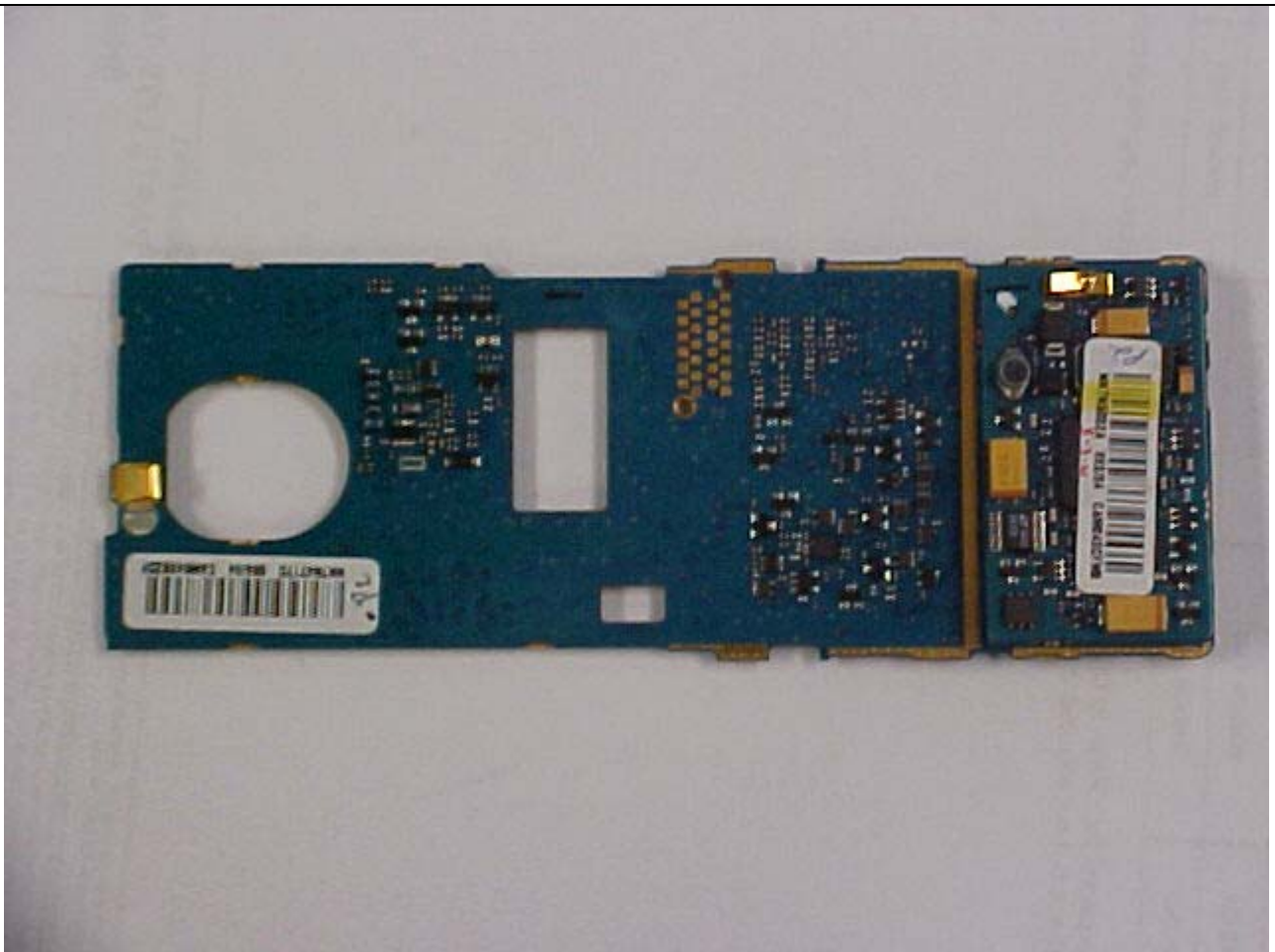
VHF MHz Integrated Transceiver Module – Transceiver Board Top View



VHF MHz Integrated Transceiver Module – Transceiver Board Bottom View



VHF MHz Integrated Transceiver Module – Vocon Board Top View



VHF MHz Integrated Transceiver Module – Vocon Board Bottom View