

DIAMOND

HD MEDIA WONDER®



QUICK START GUIDE GUIDE DE DÉMARRAGE RAPIDE

© 2010 Diamond Multimedia

Table of Contents

1. Introduction	3
1.1 Preface	3
1.2 Packing List	5
1.3 Cautions.....	5
1.4 Connection.....	7
1.5 Power On / Off	10
1.6 Menu Language.....	10
2. About the Player.....	10
2.1 Remote Control.....	10
2.2 Front Panel	13
2.3 Rear Panel.....	14
3. Setup Menu.....	14
3.1 Changing Audio Settings.....	15
3.2 Changing Video Settings	15
3.3 Changing Network Settings	16
3.4 Changing System Settings.....	19
3.5 Miscellaneous	20
4. Functions.....	21
4.1. Browser Menu.....	21
4.2 File Copy Menu.....	28
4.3 Internet Radio	29
4.4 IMS	30
5. Upgrading the Firmware.....	30
6. Appendixes.....	31
6.1 Specifications.....	31
6.2 Frequently Asked Questions	32
6.3 Copyrights and Trademarks.....	33
6.4 Warranty	34
6.5 GPL Statement.....	34

1. Introduction

1.1 Preface

Thank you very much for purchasing the Diamond HD Media Wonder MP1000 media player. We hope you will enjoy using it as a great home entertainment partner. This player has the following functionality.

A/V Output

- HDMI V1.3 for high-definition video and digital audio
- Composite & component video and stereo audio for analog audio-visual connection
- S/PDIF optical interface for high-fidelity digital audio
- Adjustable video output resolution (NTSC, PAL, 480p, 576p, 720p, 1080i, 1080p)

Multimedia Playback

- Supports major audio, video and image file formats (1080p HD video decoding)
- Movie format: AVI/MKV/TS/TP/TRP/M2TS/MPG/MP4/M4V/MOV/VOB/IFO/DAT/WMV/ASF/RM/RMVB/FLV/DVD-ISO/BD-ISO
- Music format: MP3/OGG/WMA/WAV/AAC/FLAC
- Photo format: HD JPEG/BMP/GIF/TIF/PNG
- Photo slide show with background music

Network Feature

- A/V streaming/transmission via Ethernet (10M/100M)
- A/V streaming via UPnP Media Server
- Internet Radio (SHOUTcast)

File Copy

- Supports copying & moving files among USB devices, and Network

USB 2.0 Support

- USB HOST port x 2 (for USB storage devices)

Note: All the information contained in this manual was correct at the time of publication. However, as our engineers are always updating and improving the product, your device's software may have a slightly different appearance or modified functionality than presented in this manual.

1.1.1 FCC Warning

Changes or modifications to this unit not expressly approved by the party responsible for compliance could void the user's authority to operate the equipment.

1.1.2 FCC Statement

This equipment has been tested and found to comply with the limits for a Class B digital device, pursuant to Part 15 of the FCC Rules. These limits are designed to provide reasonable protection against harmful interference in a residential installation. This equipment generates, uses and can radiate radio frequency energy and, if not installed and used in accordance with the instructions, may cause harmful interference to radio communications.

However, there is no guarantee that interference will not occur in a particular installation. If this equipment does cause harmful interference to radio or television reception, which can be determined by turning the equipment off and on, the user is encouraged to try to correct the interference by one or more of the following measures:

- *Reorient or relocate the receiving antenna.
- *Increase the separation between the equipment and receiver.
- *Connect the equipment into an outlet on a circuit different from that to which the receiver is connected.
- *Consult the dealer or an experienced radio/TV technician for help.

Shielded cables must be used with this unit to ensure compliance with the Class B FCC limits.

1.2 Packing List

Part	Quantity
Player	1
A/V cable	1
Y/Pb/Pr cable	1
Remote Control	1
Remote Control Battery	2
AC/DC adaptor	1
User Manual (printed)	1

Note:

The actual contents in the package might be different from the packing list in this manual.

1.3 Cautions

This player's design and manufacture has your safety in mind. In order to safely and effectively use this player, please read the following before usage.

1.3.1 Usage Cautions

User should not modify this player. The environmental temperature should be within +5°C ~ +35°C.

1.3.2 Power

The player's power voltage: DC 5V.

When using this player, please connect the supplied AC adapter or AC adapter cable to the player's power jack. When placing the adapter cable, make sure it can not get damaged or be subjected to pressure. To reduce the risk of electric shock, unplug the adapter first before cleaning it. Never connect the adapter to the player in a humid or dusty area. Do not replace the adapter or cable's wire or connector.

1.3.3 Radio Interference

- If not properly shielded, almost all electronic devices will get radio interference. Under some conditions, your player might get interference.
- The design of this player has followed the FCC/CE standard, and has followed the following rules:
 - (1) This player may not cause harmful interference;
 - (2) This player could accept some interference received including interference that may cause undesired operation.

1.3.4 Repair

If the player has a problem, contact our support center at www.dmmsupport.com and let our specialists do the repair, never repair the player yourself, you might damage the player or endanger yourself or your data.

1.3.5 Disposing of the Player

When you dispose of the player, be sure to dispose it appropriately. Some countries may regulate disposal of electrical device, please consult with your local authority.

1.3.6 Hard Disk Cautions

The player can use external hard disks for data storage, in normal case, format or repair is not required.

You should carefully read the < Frequently Asked Questions > chapter, and check our website for latest information before formatting the hard disk.

- Physical impact may create bad sector in the hard disk, you can use CHKDSK to fix the problem.
- All data stored in the player may be lost due to physical impact, electrical shock, power lost, HDD format etc. Please backup your data.
- It is suggested to do defragment after a long period of usage.
- Regularly backup the data in the hard disk so that it can be recovered in the event of data corruption or loss. Our company takes no responsibility for loss of data stored on the hard disk.

1.3.7 Others

When using this player, please do not let the player come into contact with water or other liquid, if water is accidentally spilled on the player, please use a dry cloth to absorb the spillage.

Electronic products are vulnerable, when using please avoid shaking or hitting the player, and do not press the buttons too hard.

- ✧ Do not let the player come into contact with water or other liquid.
- ✧ Do not disassemble the player, repair the player or change the design of the player, any damage done will not be included in the repair policy.
- ✧ Do not press the buttons of the player too hard.
- ✧ Avoid hitting the player with hard object, avoid shaking the player, and stay away from magnetic fields.
- ✧ During electrostatic discharge and the strong electromagnetic field, the product will malfunction, then unplug the power cable and the product will return to normal performance next time it is powered on.

1.4 Connection

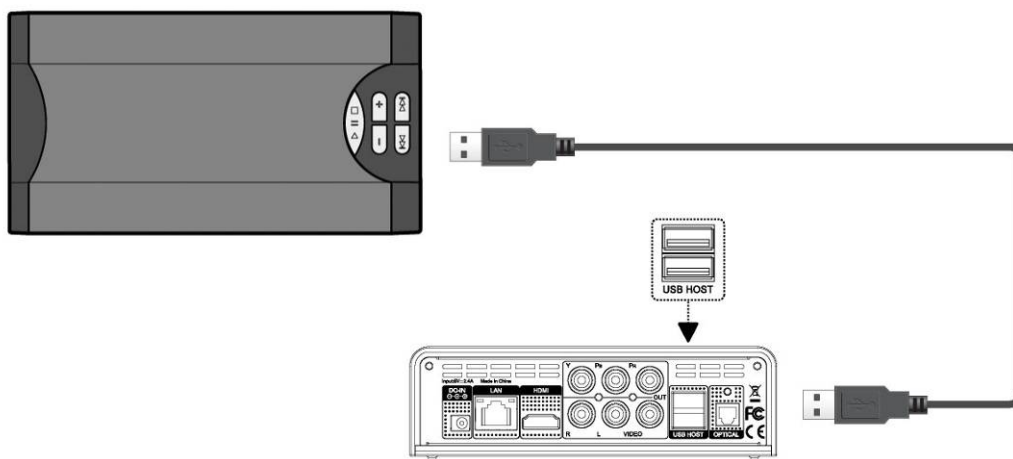
1.4.1 Connecting the Power Supply

- (1) Follow the picture and connect the AC adaptor to the player's DC IN jack;
- (2) Follow the picture and plug in the AC adaptor to the power outlet.



1.4.2 Connecting a USB Device

- (1) Make sure the player is powered on;
- (2) Plug in the USB stick or USB HDD etc. to the USB HOST port of this player.



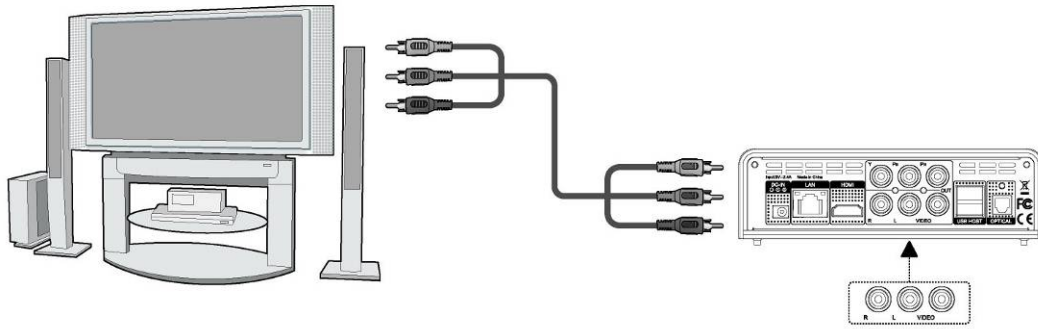
In this way, you can browse contents on the USB device.

1.4.3 Connecting to a TV

1.4.3.1 A/V OUT

- (1) Follow the picture and plug in the 3 color connector to the player's A/V OUT jack;
- (2) Follow the picture and plug in the 3 color connector to the TV's A/V IN jack.

In this way, you can enjoy the content in the player on TV or other display devices.



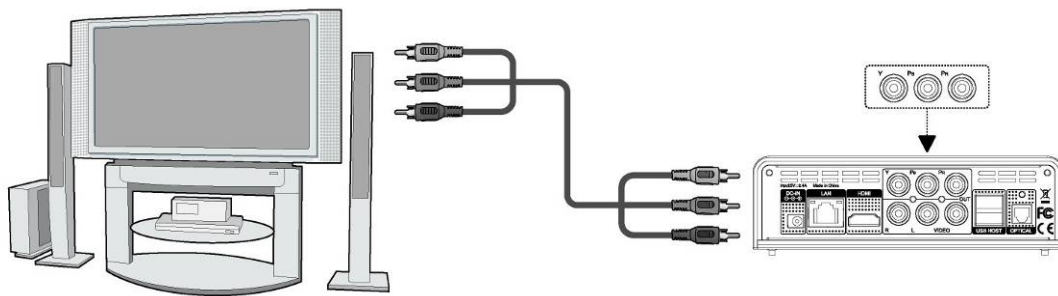
1.4.3.2 Y/Pb/Pr Component OUT

- (1) Follow the picture and plug in the 3 color connector to the player's Y/Pb/Pr jack;
- (2) Follow the picture and plug in the 3 color connector to the TV's Y/Pb/Pr jack.

Audio Connection while using Y/Pb/Pr Video out:

First method: use the audio output from the A/V OUT jack;

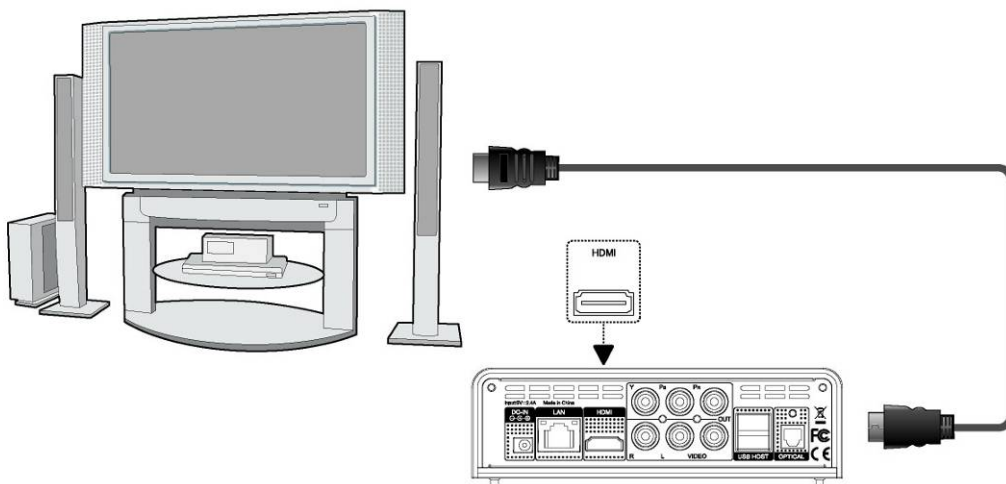
Second method: use the audio output from the S/PDIF Optical jack.



In this way, you can also enjoy videos, music, and photos in the player on TV.

1.4.3.3 HDMI OUT

- (1) Follow the picture and plug one connector on your HDMI cable to the player's HDMI jack;
- (2) Follow the picture and plug the other connector on your HDMI cable to the TV's HDMI jack. **Note:** The HDMI cable is an optional accessory sold separately.

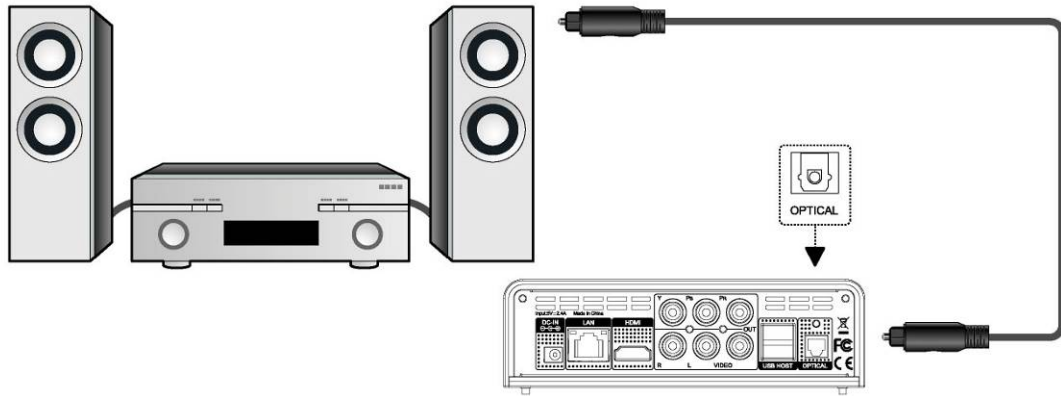


In this way, you can have the highest quality video and audio via a single cable.

1.4.4 Connecting to an Digital Amplifier

- (1) Follow the picture and plug in the Toslink connector on your optical fiber to the player's S/PDIF Optical jack;
- (2) Follow the picture and plug in the other connector on your optical fiber to the digital audio device (digital amplifier or decoder).

Note: Optical fiber is not supplied.

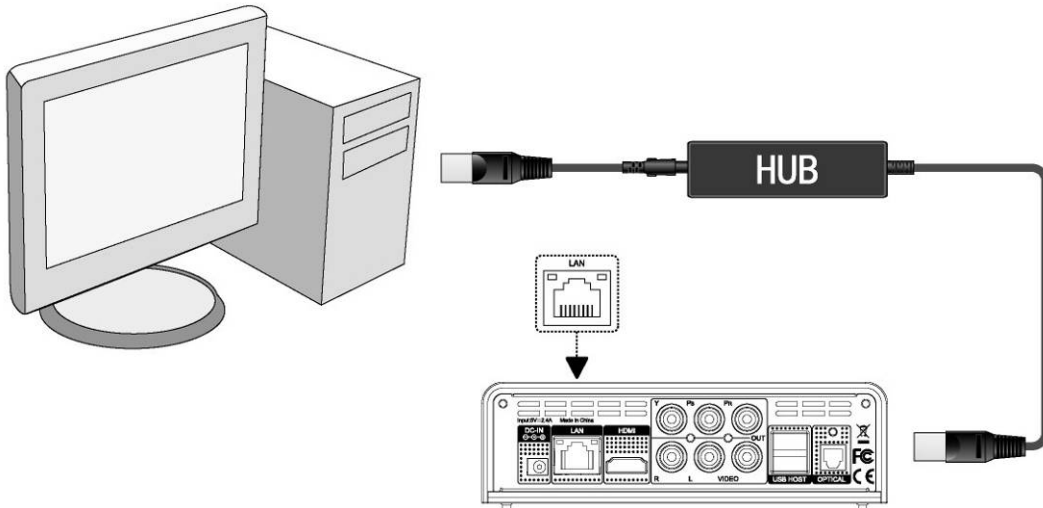


In this way, you can enjoy powerful Dolby Digital, DTS, or MPEG sound. (Please refer to '**3.1 Changing Audio Settings**' for configuration)

1.4.4 Connecting to a LAN

To connect to a LAN (Local Area Network) you require a cat5, cat5e or cat6 network cable (not supplied).

- (1) Connect one end of the cable to the player's RJ45 LAN socket;
- (2) Connect the other end of the cable to a RJ45 LAN port on your router, switch, or hub devices.



1.4.6 Connecting to a WLAN (not supported on the MP1000)

- (1) Make sure the player is powered on;
- (2) Plug the Wireless LAN USB Adapter (i.e. Wi-Fi USB Dongle) to the USB HOST port of the player.

Note: The Wi-Fi Dongle is an optional accessory sold separately. (Please refer to '**3.3 Changing**

Network Settings' for more details about wireless setup)

1.5 Power On / Off

Power On

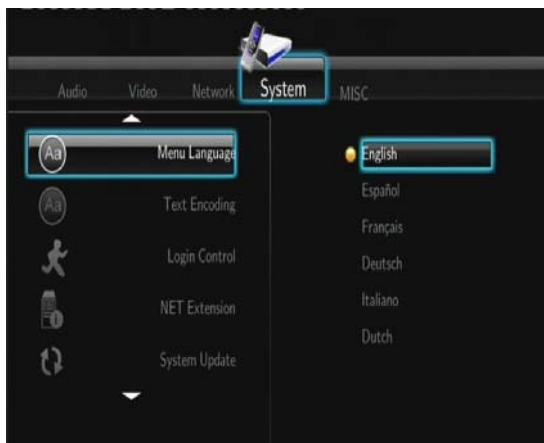
After connecting the DC IN jack and press the power button on the front panel, the player will soon enter the home screen, and the power indicator will turn blue.

Power Off

Press the power button on the front panel, the player will soon enter standby mode, and the power indicator will turn red. Then unplug the power cord to cut off the power supply.

1.6 Menu Language

The system language of this player can be set to English or other languages. Change the language you wish in the setup menu, the selected language will take effect immediately.



2. About the Player

2.1 Remote Control

All procedures in this manual can be carried out using the remote control buttons. See the following for details on each button and its function:



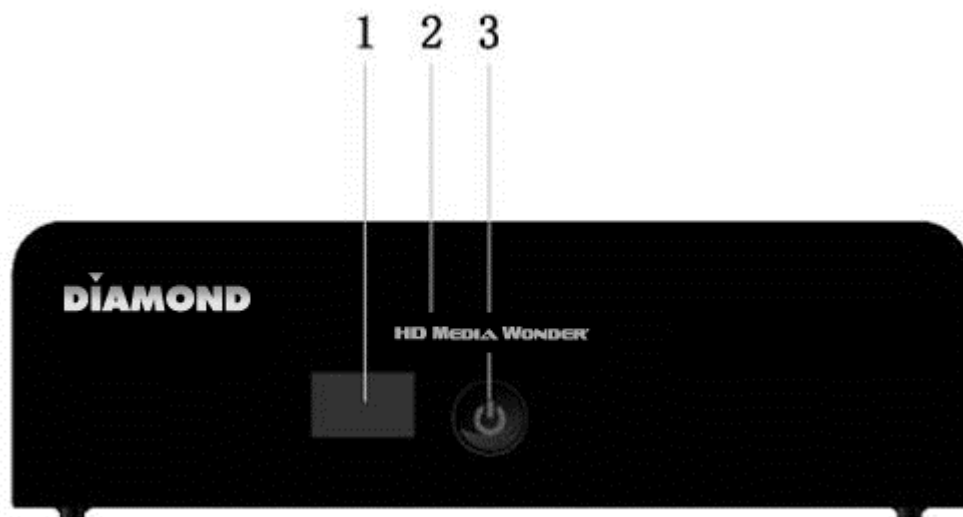
- | | |
|--------------------|------------|
| 1. STANDBY | 2. MUTE |
| 3. TV SYSTEM | 4. BROWSER |
| 5. Numeric buttons | 6. REPEAT |
| 7. FR | 8. VOL- |
| 9. FF | 10. PLAY |

- | | |
|--------------|--------------------------|
| 11. HOME | 12. Navigational buttons |
| 13. MENU | 14. PAUSE/STEP |
| 15. SLOW | 16. INS REPLAY |
| 17. CM SKIP | 18. SELECT |
| 19. CONFIRM | 20. AUDIO |
| 21. SUBTITLE | 22. ZOOM IN |
| 23. ZOOM OUT | 24. A-B |
| 25. ANGLE | 26. SETUP |
| 27. ENTER | 28. RETURN |
| 29. STOP | 30. NEXT |
| 31. VOL+ | 32. PREV |
| 33. GOTO | 34. COPY |
| 35. MUSIC | 36. INFO |

No.	Button	Function
1	STANDBY	Press to enter standby mode or wake up.
2	MUTE	Press to mute audio output, and press again to resume.
3	TV SYSTEM	Press to switch between NTSC, PAL, 480P, 576P, 720P, 1080I, and 1080P.
4	BROWSER	Press to enter the browser menu.
5	Numeric buttons	Press to enter numeric input when changing settings.
6	REPEAT	Press to set repeat option: One, All, (and Shuffle).
7	FR	Press to fast rewind the current playback. Press repeatedly to select speeds.
8	VOL-	Press to decrease the volume.
9	FF	Press to fast forward the current playback. Press repeatedly to select speeds.
10	PLAY	Press to begin playback.
11	HOME	Press to enter the home screen.
12	Navigational buttons	Press the arrow buttons to select menu options, and the ENTER button to confirm.
13	MENU	Press to activate tools menus: <ul style="list-style-type: none"> ● Press in the browser menu to rename and delete files. ● Press in My_Shortcuts in NET of the browser menu to add shortcuts for network access.
14	PAUSE/STEP	Press to pause the current playback. Press again to step to the next frame. Press the PLAY button to resume playback.
15	SLOW	Press to play back in slow motion. Press the PLAY button to resume regular playback.
16	INS REPLAY	Press to backward 10 seconds of the current playback, which suitable for sport programs.
17	CM SKIP	Press to advance 30 seconds of the current playback.
18	SELECT	Press to select files in browser and file copy menu.
19	CONFIRM	Reserved button. No function has been assigned to it yet.
20	AUDIO	Press to select an audio track.
21	SUBTITLE	Press to set subtitle options.
22	ZOOM IN	Press to zoom in the image (photo or video).
23	ZOOM OUT	Press to zoom out the image (photo or video).
24	A-B	Press to set the beginning and end points of a section to repeat.
25	ANGLE	Press to change the view angle during DVD (with multi-angle)

		playback.
26	SETUP	Press to enter the setup menu.
27	ENTER	Press to select options in menus.
28	RETURN	Press to return to the previous screen while navigating menus.
29	STOP	Press to stop playback.
30	NEXT	Press to view the next file / page down.
31	VOL+	Press to increase the volume.
32	PREV	Press to view the previous file / page up.
33	GOTO	Press to jump to a specific point on a title. Specify the point using Title, Chapter and Time.
34	COPY	Press to enter the file copy menu.
35	MUSIC	Reserved button. No function has been assigned to it yet.
36	INFO	Press to hide or display the information bar during playback.

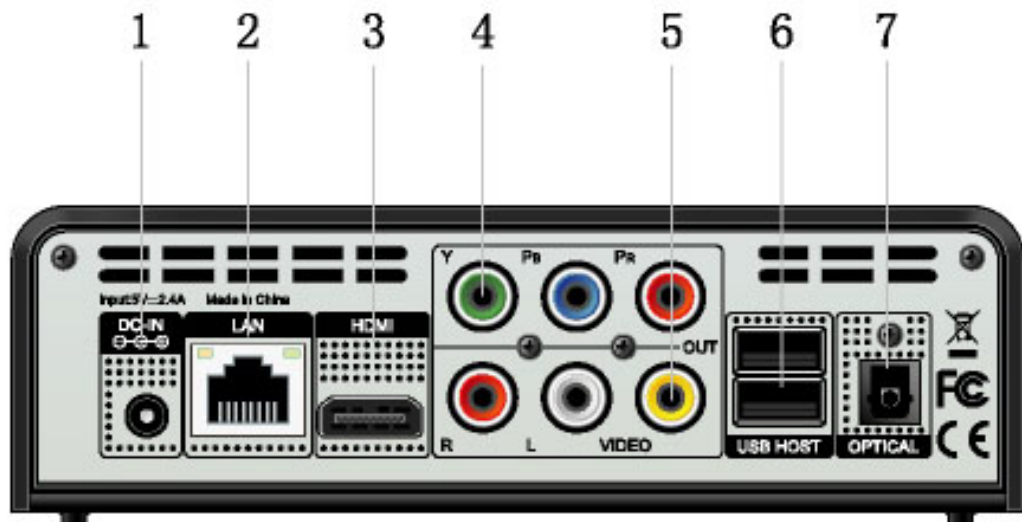
2.2 Front Panel



1. Infrared Receiver window
3. Power button

2. Power indicator

2.3 Rear Panel



- | | |
|------------------------|-------------------------------|
| 1. DC IN jack | 2. RJ45 LAN socket |
| 3. HDMI jack | 4. Y/Pb/Pr OUT jack |
| 5. A/V OUT jack | 6. USB HOST port (A-Type) x 2 |
| 7. S/PDIF OPTICAL jack | |

3. Setup Menu

The Setup menu allows you to personalize and configure the preferences for your player.

To select a Setup option:

- Select the **Setup** icon on the home screen, or press the **SETUP** button on the remote control.

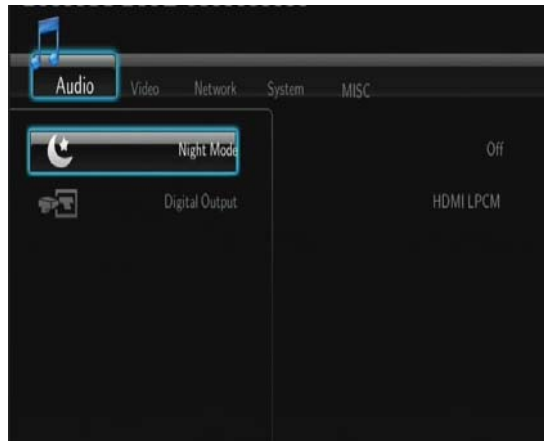


- Use the **LEFT/RIGHT** navigational buttons to select an option, and then press **ENTER**.

There are five Setup options, including **Audio**, **Video**, **Network**, **System**, and **MISC**. Use the **UP/DOWN** navigational buttons to select a menu. Press **ENTER** to confirm. Press **RETURN** to cancel and display the previous menu screen.

3.1 Changing Audio Settings

Use this menu to configure audio settings.



Night Mode

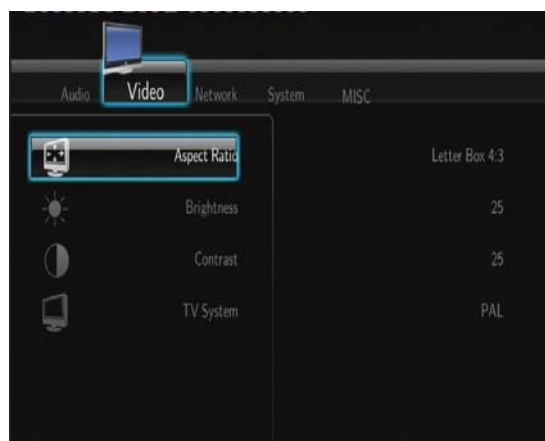
- Choose between **Off** / **On** / **Comfort**. If the option is turned on, the audio output volume will be decreased to make you more comfortable.

Digital Output

- Choose between **HDMI LPCM** / **HDMI LPCM MULTI CH** / **HDMI RAW** / **SPDIF LPCM** / **SPDIF RAW**. In raw mode, Dolby Digital, DTS, or MPEG sound can be bypassed to the HDMI TV or Digital amplifier.

3.2 Changing Video Settings

Use this menu to configure video settings.



Aspect Ratio

- **Pan Scan 4:3**: Display a wide picture on the entire screen and cuts off the redundant portions. Select when a standard 4:3 TV is connected.
- **Letter Box 4:3**: Display a wide picture with two black borders on the top and bottom of 4:3 screen. Select when a standard 4:3 TV is connected.
- **16:9 / 16:10**: Compress the image to convert the whole image. Select when a 16:9 / 16:10 TV is

connected.

Brightness

- Adjust the level of brightness.

Contrast

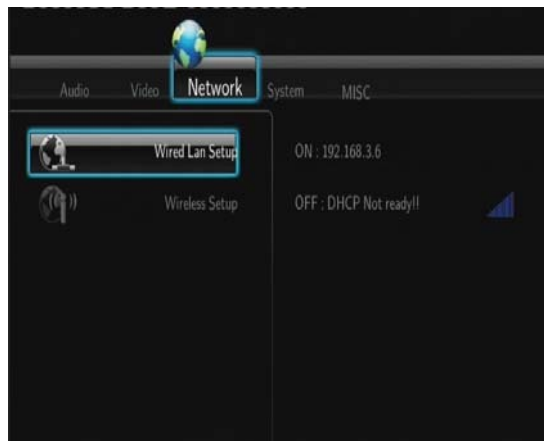
- Adjust the level of contrast.

TV SYSTEM

- Select to adjust video output resolution: **NTSC / PAL / 480P / 576P / 720P 50HZ / 720P 60HZ / 1080I 50HZ / 1080I 60HZ / 1080P 50HZ / 1080P 60HZ.**

3.3 Changing Network Settings

Use this menu to configure Ethernet and WLAN (Wireless Local Area Network) settings.

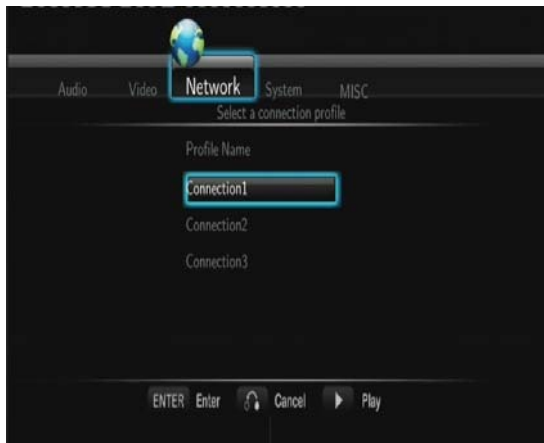


Wired LAN Setup

- **DHCP IP (AUTO)**
Select to obtain IP address automatically.
- **FIX IP (MANUAL)**
Select to manually input the IP Address, Subnet Mask, Default Gateway, and DNS Server IP Address.

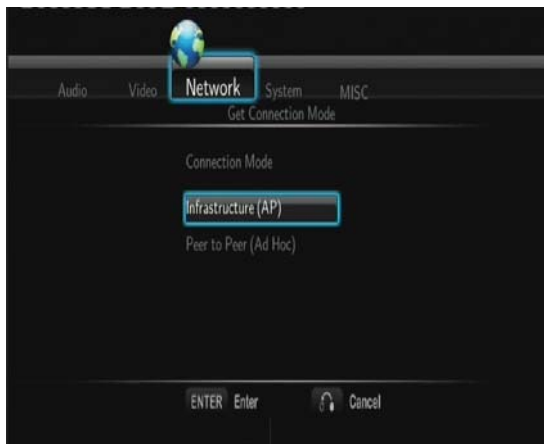
Wireless Setup

- **Selecting a connection profile**



This player can store up to three wireless network connections. Press **ENTER** to go to next step, press **RETURN** to cancel, and press **PLAY** to connect.

- **Get Connection Mode**



Choose between **Infrastructure (AP)** and **Peer to Peer (Ad Hoc)**. Press **ENTER** to go to next step, and press **RETURN** to cancel.

- **Infrastructure (AP)**

Infrastructure mode is used to connect computers with wireless network adapters, also known as wireless clients, to an existing wired network with the help from wireless router or access point.

Get SSID Name



Press **ENTER** to go to next step, press **RETURN** to cancel, and press **SELECT** to refresh the SSID list.

Note: In the Security list, **WEP** (Wired Equivalent Privacy) and **WPA** (Wi-Fi Protected Access) means the network is encrypted, i.e. an encryption key is needed to access the network. **NONE**

means it is an open system network.

Input WEP / WPA Key



Encryption keys can be inputted via the virtual keyboard. Press the navigational buttons to select, **ENTER** to input, **CAPS** to switch between uppercase and lowercase, **<-** to delete a character, **->** to insert a space, **shift** to make more symbols available, and **OK** to confirm.

Test connection



The testing process will take for a while, please be patient to wait. If the test is ok, the network information (Profile Name, IP address, Subnet Mask, Gateway, etc.) will be displayed on the screen.

- Peer to Peer (Ad Hoc)

Peer to Peer mode, which is also called Ad Hoc mode or computer-to-computer mode, is used to connect wireless clients directly together, without the need for a wireless router or access point.

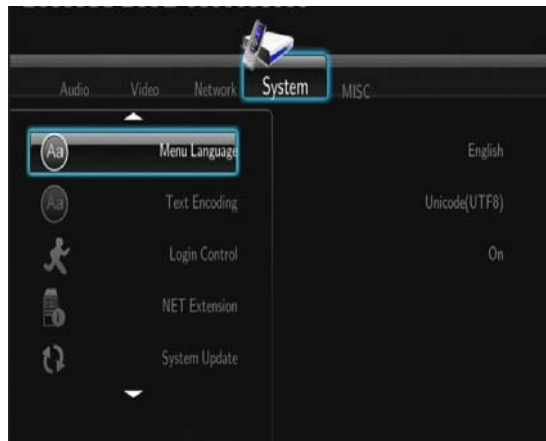
Ad-Hoc Setup



Press **ENTER** to go to next step, press **RETURN** to cancel, and press **PLAY** to connect.

3.4 Changing System Settings

Use this menu to configure system settings.



Menu Language

- Select to choose the OSD (On-Screen Display) language.

Text Encoding

- Select to set the text encoding option (subtitle display).

System Update

- Select to update the firmware via a USB stick.
 - 1) Copy 'install.img' to the root directory of a USB stick, and connect it to the USB HOST port of the player.
 - 2) Select 'System Upgrade' or 'System Reinstall', and press **ENTER** to confirm.

Time

- Select to synchronize system time with Internet Time Server

System Info

- Select to view system information (firmware version, boot loader version, Mac address, etc.)

Restore Default

- Select to restore factory defaults.

3.5 Miscellaneous

Use this menu to adjust miscellaneous settings.



Resume Playback

- Select to turn on / off resume playback (auto-bookmarking) feature for movies.

Slide Show Timing

- Select to set the interval time for photo slide show.

Transition Effect

- Select to set the transition effect for photo slide show.

Ken Burns

- Select to apply Pan/Scan effects for images.

Seamless Playback

- Select to playback sequential .TS / .M2TS videos without delay.

Background Music

- Select to set the background music options while view pictures: **Off / Folder**.

Screen Saver

- Select to turn on / off screen saver.

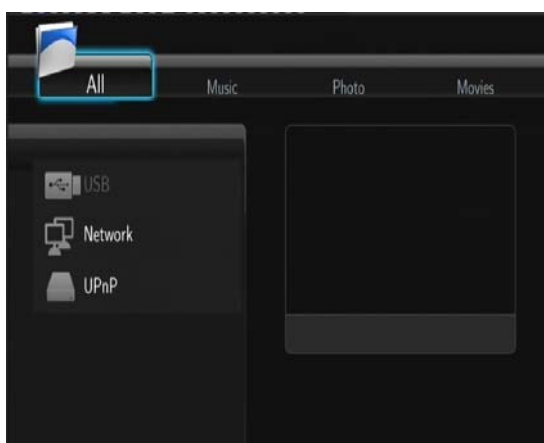
Movie Preview

- Select to turn on / off movie preview in the browser menu.

4. Functions

4.1. Browser Menu

The browser menu allows you to browse and play media files stored on USB devices, Network, and UPnP-server. To enter the menu, select the **Browser** icon on the home screen, or press the **BROWSER** button on the remote control.

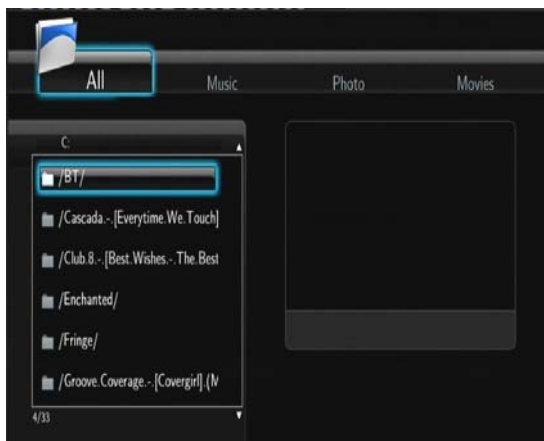


The following buttons can be used while navigating the browser menu.

Button	Function
UP / DOWN	Move cursor up / down to select devices, folders, or files.
LEFT / RIGHT	Select filter options: All, Music, Photos, and Movies .
PREV / NEXT	Go to previous / next page.
ENTER	Enter or confirm the selected item.
SELECT	Select files under Browser -> USB menu.
RETURN	Return to the previous menu.

4.1.1 Browsing All

In this mode, all folders and supported contents (music, photos, and movies) will be displayed.

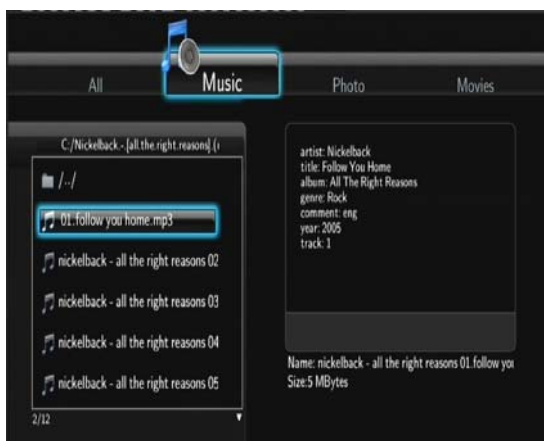


Note:

- Please refer to chapter '9.1 Specifications' for more about the supported content formats.
- Music tracks might not be able to be played continuously under **All** filter, please switch to the **Music** filter instead.

4.1.2 Browsing Music

In this mode, all folders and supported audio files in current directory will be displayed.



The following buttons can be used to control music playback.

Button	Function
PLAY	Begin playback.
PAUSE / STEP	Pause playback.
FR / FF	Fast rewind or fast forward. Press repeatedly to select the speed.
REPEAT	Set repeat options: One , All , and Shuffle .
INFO	Hide or display the information bar during playback.
STOP	Stop playback.

4.1.3 Browsing Photos

In this mode, all folders and supported image files in current directory will be displayed.



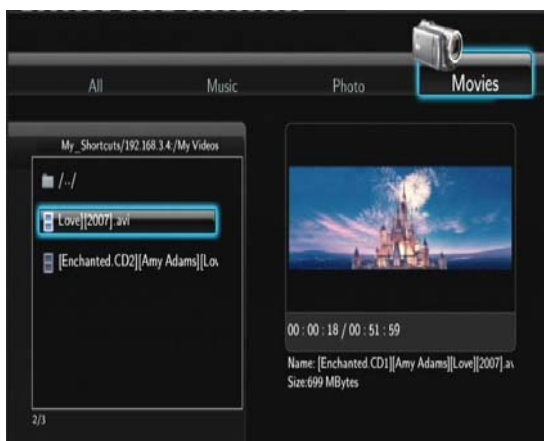
The following buttons can be used to control music playback.

Button	Function
PLAY	Begin playback.
PREV / NEXT	View the previous or next photo.
LEFT / RIGHT	Rotate a photo in any angle.
ZOOM IN / OUT	Zoom in / out the image.
INFO	Hide or display the information bar during playback.
STOP	Stop playback.

You can view photos in slide show mode with background music. When it is enabled, the slide show starts automatically once you press **PLAY** button. (Please refer to **Slide Show Timing, Transition Effect**, and **Background Music** in chapter '3.5 Miscellaneous' for more details)

4.1.4 Browsing Movies

In this mode, all folders and supported video files in current directory will be displayed.



The following buttons can be used to control video playback.

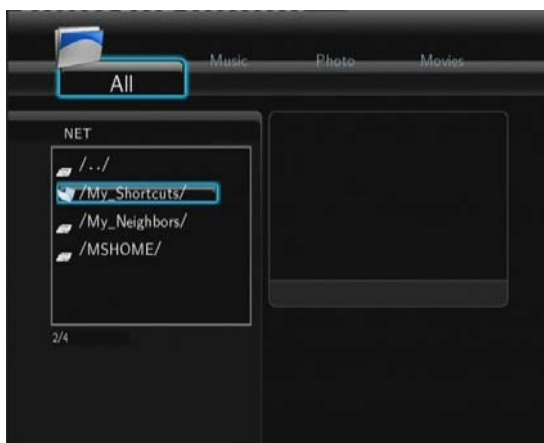
Button	Function
PLAY	Begin playback.
PAUSE / STEP	Pause playback; Press again to step to next frame.
SLOW	Play video in slow motion. Press repeatedly to select the speed.
FR / FF	Fast rewind or fast forward. Press repeatedly to select the speed.
PREV / NEXT	View the previous or next movie.
REPEAT	Set repeat options: Title , Chapter , and All .

ZOOM IN / OUT	Zoom in / out the image.
INFO	Hide or display the information bar during playback.
GOTO	Display playback search menu.
A-B	Set the beginning and end points of a section to repeat.
ANGLE	Change the view angle during DVD (with multi-angle) playback.
MENU	Return to the root menu during DVD playback.
INS REPLAY	Backward 10 seconds of the current playback
CM SKIP	Advance 30 seconds of the current playback.
AUDIO	Select an audio track while watching BivX video or DVD with multiple audio tracks.
SUBTITLE	Set subtitle options.
STOP	Stop playback.

4.1.5 A/V Streaming via Network

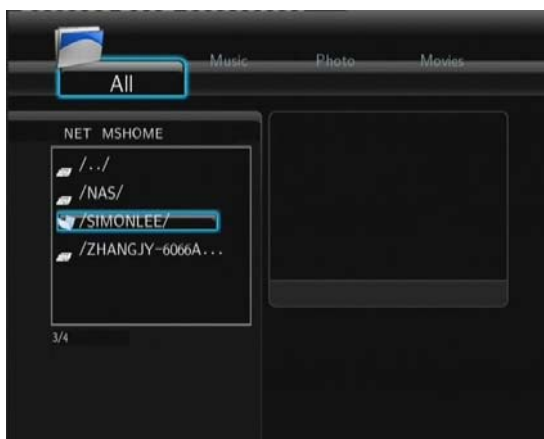
You can stream the media files shared on the home network (Ethernet or WLAN). Please refer to '**3.3 Changing Network Settings**' for details about network settings.

There are two ways to locate media files shared on your local network in the **Network** menu. One is to browse through workgroup; the other way is to browse through '**My_Shortcuts**'.



4.1.5.1 Browsing through Workgroup

You can choose the workgroup which your PC belongs to from the workgroup list, find your PC name, and press the **ENTER** button to confirm. Then you can select and play the shared media files that you want to browse.



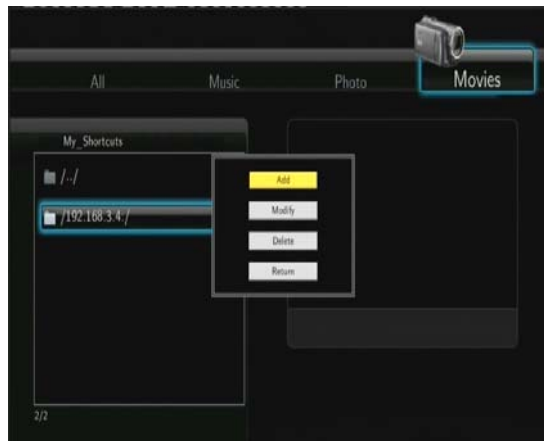
Note:

- While browsing high definition video files (resolution up to 720p / 1080i / 1080p) via Ethernet or WLAN, the video might be buffering. It is normal due to the limit of network speed or signal strength.
- Due to different network conditions, sometimes the workgroup might not be accessed or shown in the list. And then you need to use '**My_Shortcuts**' to browse shared files.

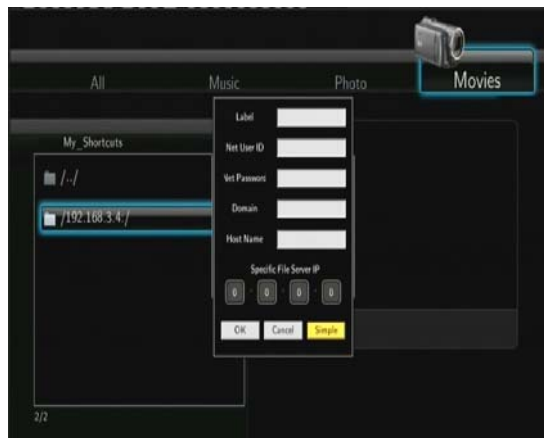
4.1.5.2 Browsing through '**My_Shortcuts**'

You can also set '**Specific File Server IP**' and access it from '**My_Shortcuts**' in the menu.

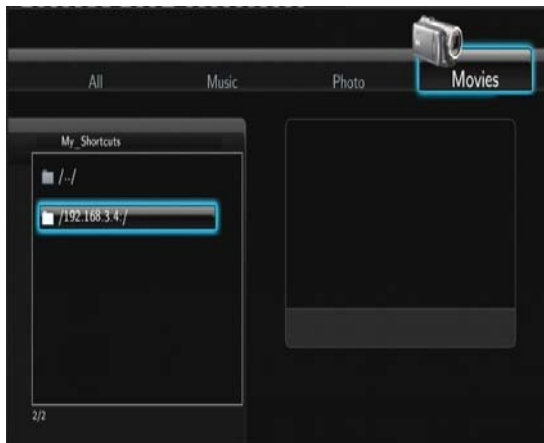
- Press the **MENU** button and a popup menu appears.



- Select **Add** to open a popup menu where you can input **Label**, **Net User ID**, **Net Password**, **Domain**, **Host Name**, and **Specific File Server IP**. Select **OK** to confirm, **Cancel** to cancel, and **Simple / Detail** to switch between simple and advanced options.



- Select the shortcut you added and press the **ENTER** button to confirm. Then you can select and play the shared media files on the destination computer.



4.1.6 A/V Streaming via UPnP-server

A built-in UPnP (Universal Plug and Play) client has been integrated on the system, which enables the player to auto-detect UPnP Media Servers on the network to browse and stream media files from them.

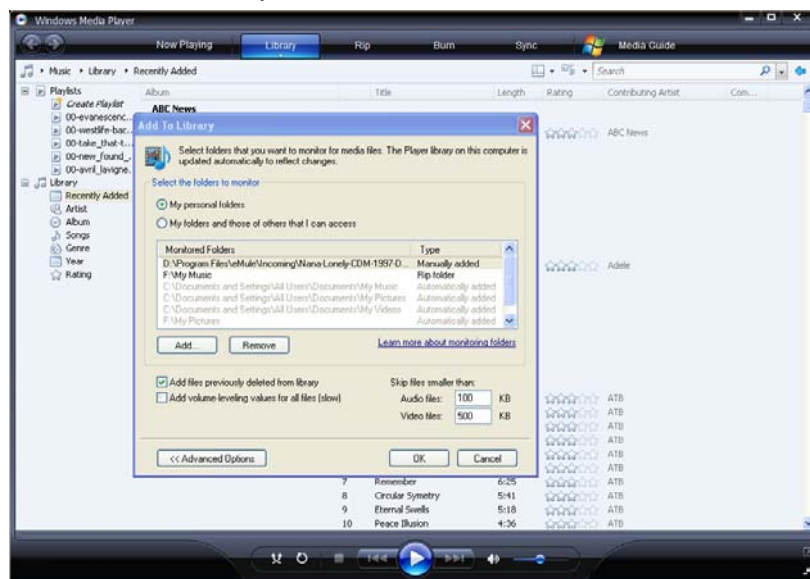
4.1.6.1 Installing UPnP Media Server on your PC

There're a lot of free and commercial UPnP Media Server software, such as Windows Media Connect, Windows Media Player 11, XBMC Media Center (Linux/Mac/Windows), MediaTomb (Linux), etc. Please install one of them on you computer. In the following chapters, we will take Windows Media Player 11 on Microsoft Windows XP SP2 for an example.

4.1.6.2 Sharing Media on your PC

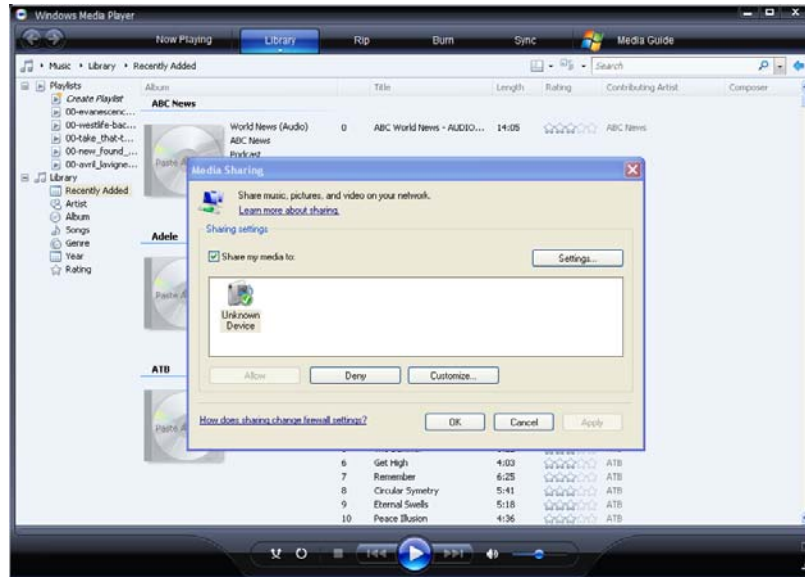
The Media Sharing feature of Windows Media Player 11 lets you enjoy the contents of your Windows Media Player library from anywhere in your home.

- Open Windows Media Player 11, click **Library** -> **Add Library** -> **Advanced Options** to add or remove media files from the library.



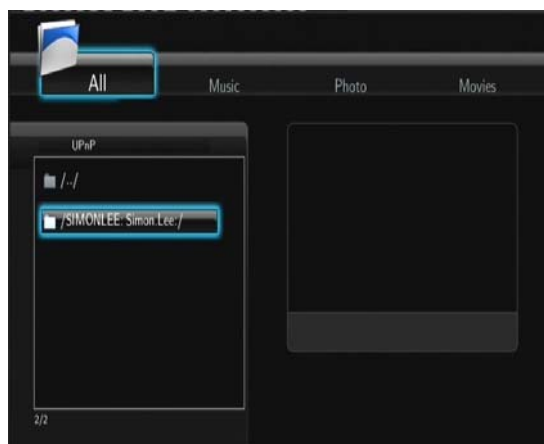
- Click **Library** -> **Media Sharing**, then you can allow or deny devices to access the media library.

Click **Allow** to authorize your player.

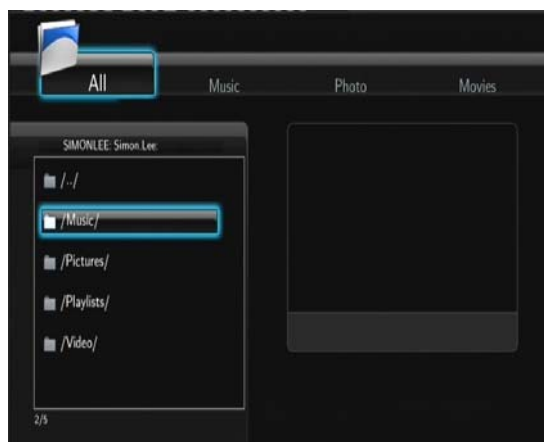


4.1.6.3 Streaming Media on your Player

- Connect your player to the home network (LAN or WLAN).
- Visit **Browser** -> **UPnP** menu on the player, select the UPnP-server, and press **ENTER**.

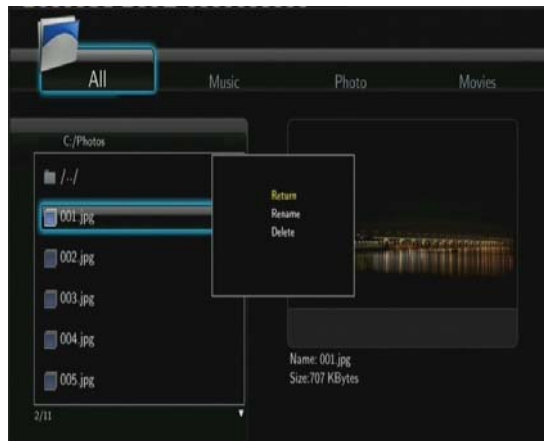


- Then you can browse the media library shared by Windows Media Player 11.



4.1.8 Renaming / Deleting Files

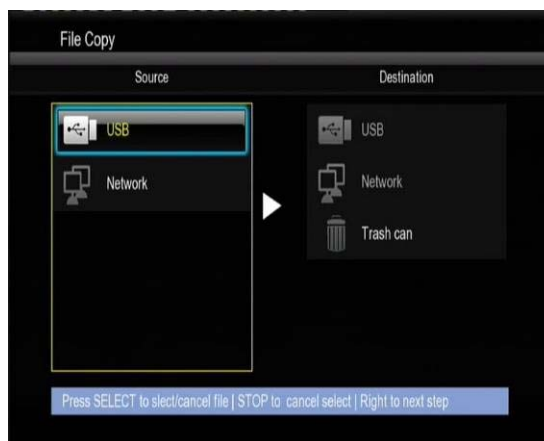
When navigating in the browser menu, you can press the **MENU** button to activate a popup menu where you can rename and delete files or folders.



Press the **UP / DOWN** buttons to select from **Return**, **Rename**, and **Delete**. And press **ENTER** to confirm.

4.2 File Copy Menu

Select the **File Copy** icon from the home screen to enter the **File Copy** menu, which allows you to copy files between USB devices, and Network.



The following buttons can be used under the file copy menu.

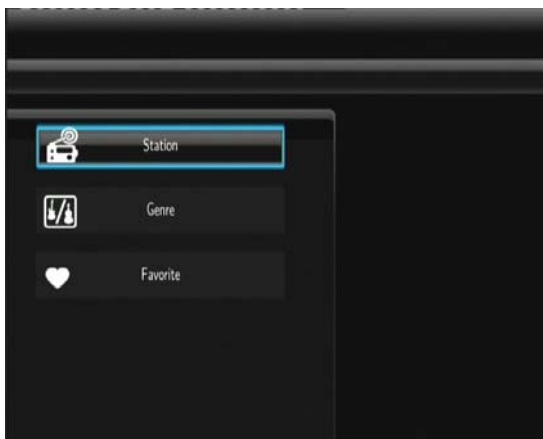
Button	Function
UP / DOWN	Move cursor up / down to select devices, folders
RIGHT	Go to the next step.
SELECT	Select (or cancel) folders or files (The selected items will be ticked).
STOP	Cancel all selections.
ENTER	Confirm the selected options.

Please refer to the following operations to copy / move folders / files between devices.

- Step 1: Select the source device and destination device.
- Step 2: Select the source files you want to copy.
- Step 3: Select the destination folder to store the above files.
- Step 4: Select **Copy** or **Move** to proceed.

4.3 Internet Radio

This player integrates the SHOUTcast free Internet radio function. Select the **Internet Radio** icon on the main interface to enter this menu.



Note:

- Make sure the player is connected properly to a LAN or WLAN with Internet access, please refer to '**3.3 Changing Network Settings**' for more details;
- When you enter the Internet Radio menu at the first time, it will take several seconds to download data from the Internet, please be patient to wait;
- For more about SHOUTcast, please refer to the website: www.shoutcast.com

The following buttons can be used under this menu.

Button	Function
UP / DOWN	Move cursor up / down to select station, channel, and genre.
PREV / NEXT	Page up / down.
ENTER	Confirm and enter the selected menu.
MENU	Add / delete a station to / from Favorite while it is highlighted.
PLAY	Begin playback after a channel has been selected.
STOP	Stop playback.
RETURN	Return to the previous menu.

Station

- All downloaded stations will be listed under this menu.

Genre

- You can search for stations by genre (pop, rock, jazz, etc.) under this menu.

Favorite

- Your favorite stations can be kept under this menu.

4.4 IMS

This is an additional feature and all contents and services are provided by third-party service providers, our company does not offer any contents and services in this feature and is not responsible for any contents and services provided. Our company is not responsible for any operational stability of the contents and services, for example, if you cannot access certain web site for video streaming or news broadcast, or the content of a web site has been changed etc, are all responsibilities of and controlled by the third-party service providers. If you find that these features are not operating properly, please contact our customer service or visit our company website to obtain the relevant information.

5. Upgrading the Firmware

The firmware is the operating system (OS) installed on the device. Firmware upgrades can bring new features, improvements and bug fixes.

Please refer to **System Update** in chapter '**3.4 Changing System Settings**' for more details.

You can also use the following method to upgrade the firmware:

- Copy 'install.img' to the root directory of a USB key;
- Plug the USB key to the USB HOST port on the player;
- Press and hold the POWER button on the front panel, and connect the player with power supply;
- Wait for more than 5 seconds, and then remove your finger from the POWER button.

The upgrade process will start automatically. The LED indicator on the front panel will be enlightened and flashing during installation. If it is connected to a TV set, an install page will appear on the TV screen.

6. Appendixes

6.1 Specifications

I/O INTERFACES SUPPORTED:

- USB 2.0 HOST port x 2 (compatible to USB 1.1)
 - Composite (CVBS) A/V jack
 - Component Y/Pb/Pr jack
 - HDMI V1.3 interface
 - S/PDIF optical jack
 - DC-IN 5V
-

FILE SYSTEM SUPPORTED:

- FAT/FAT32/NTFS/EXT3
-

CONTENT FORMATS SUPPORTED:

- AVI/MKV/TS/TP/TRP/M2TS/MPG/MP4/MOV/M4V/VOB/ISO/IFO/DAT/WMV/ASF/RM/RMVB/FLV, resolution up to 720p/1080i/1080p
 - MP3/OGG/WMA/WAV/AAC/FLAC
 - HD JPEG/BMP/GIF/TIF/PNG
-

VIDEO CODECS SUPPORTED:

- MPEG-1
 - HD MPEG-2
 - HD MPEG-4 SP/ASP/AVC (H.264)
 - WMV9 (VC-1)
 - RealNetworks (RM/RMVB) 8/9/10, up to 720p
-

AUDIO CODECS SUPPORTED:

- MP2/3, OGG Vorbis, WMA (DRM, and Advanced Profile not supported), PCM, LPCM, MS-ADPCM, LC-AAC, HE-AAC, COOK, RA-Lossless
-

SUBTITLE FORMATS SURPOTED:

- SRT, SMI, SSA, ASS, IDX/SUB, SUB
-

NETWORK FEATURE

- 10/100Mbps Auto-Negotiation Ethernet
 - 802.11b/g/n WLAN, up to 300Mbps (supported by optional WLAN USB Adapter)
-

Note: The specifications and design of this product are subject to change without notice.

6.2 Frequently Asked Questions

Question 1. I find new file names and folder names that I never created before or they have strange gibberish names.

Answer:

Most likely, the player's file allocation table (FAT) has been corrupted. This might be due to the player shutting down (due to low battery power) while reading or writing to your computer by the USB connection. Windows and Macintosh often write extra files to the hard disk such as finder.def or System volume info. These are normal and will not do any harm to the player.

Question 2. My files have disappeared from the player.

Answer:

Make sure that you browse your files via the correct browser mode which means correct filtered views such as Photos, Music, or Movies.

Question 3. During power on, why does the TV will have a short flashing, blue screen or screensaver?

Answer:

This is normal, when the system initializes, it will setup the corresponding parameters so it can output the correct video signal to the TV, during the initializing time, the TV will receive incorrect signals or the signals will not be stable and will cause the TV screen to flash, some TV's will treat this as no signal, and will display a blue screen or screensaver.

Question 4. Why when I switch to Y/Pb/Pr 480p, 576p, 720p, 1080i, and 1080p, does the TV screen display an unwatchable picture?

Answer:

Please check if your TV supports Y/Pb/Pr 480p, 576p, 720p, 1080i, and 1080p output, if your TV does not support, please use the A/V signal display instead, press the TV SYSEEM button on the remote control, then switch the TV's video input to NTSC or PAL.

Question 5. Why is there no sound on movie or music playback when using Y/Pb/Pr component output?

Answer:

Y/Pb/Pr output is a video output only, and does not include sound signals. When using Y/Pb/Pr output, please plug the A/V OUT or the S/PDIF jack to output sound.

Question 6. I cannot get SSID name, the screen always displays: 'Can't get any SSID!'

Answer:

When the WLAN USB Adapter is connected to the player, it needs some time to get initialized. Please wait for about 1~2 minutes and try refreshing the SSID list again.

Question 7. I cannot see files shared on my computer via Browser->Network menu.

Answer:

Please check following items:

- 1) Connect the player to network and obtain an IP address first;
- 2) Please enable NetBIOS of TCP/IP on computer;
- 3) Please check your PC's firewall settings;
- 4) Please enable your PC's 'Guest' account;
- 5) Please share the folders which you wish to browse on your PC, and make sure that 'Everyone' or 'Guest' has the right to access.

Question 8. I configured everything correctly, but still cannot get the wireless network or UPnP function to work.

Answer:

Are you using a firewall such as Norton Internet Security, McAfee Personal Firewall, Zone Alarm, etc. or even the built-in firewall of Windows XP? (Don't forget that Service Pack 2 for Windows XP automatically upgrades your firewall and turn it on by default)

If you have a firewall, it may need to be configured or have exceptions created to allow you to see and communicate with the player on the network. To test if your firewall is preventing network communication (including PING and access shared folders), try disabling it to see if you can connect. If you can connect with the firewall disabled, you may need to add the player to the 'Trusted' list or configure the firewall for local intranet access. Worst-case, disable your firewall long enough to use the player, then enable it again when done.

Question 9. I am using the 802.11n Wi-Fi dongle with an 802.11n wireless router, why the speed is still 802.11g 54Mbps rather than 300Mbps?

Answer:

The IEEE 802.11n Draft standard prohibits using high throughput with WEP or TKIP as the unicast cipher. If you use these encryption methods (e.g. WEP, WPA-TKIP), your data rate will drop to 54 Mbps. You may contact the Access Point or router manufacturer to download the latest firmware, or try other encryption methods (WPA2-AES or WPA2-TKIP), or choose to configure an unsecured profile, but this option is not recommended.

6.3 Copyrights and Trademarks

Copyrights

All rights reserved. No part of this manual may be reproduced, or transmitted in any form or by any

means, whether by electronically or mechanically, without the express written permission from the copyright holder.

Copyrighted materials, such as software, music files, or movies, are protected by local law, and may not be illegally copied or used without permission from the copyright owner.

Trademarks

Microsoft and Windows are registered trademarks of Microsoft Corporation.

All other trademarks are property of their respective holders.



Manufactured under license under U.S. Patent #'s: 5,451,942; 5,956,674; 5,974,380; 5,978,762; 6,487,535 & other U.S. and worldwide patents issued & pending. DTS and the Symbol are registered trademarks, & DTS 2.0+ Digital Out and the DTS logos are trademarks of DTS, Inc. Product includes software. © DTS, Inc. All Rights Reserved.



Manufactured under license from Dolby Laboratories.

Dolby and the double-D symbol are registered trademarks of Dolby Laboratories.

6.4 Warranty

What your warranty *does not* cover:

- Acts of nature, such as fire, static discharge.
- Damage from unauthorized repair, alteration or accident.
- Damage from misuse or neglect.
- A unit that has been modified or incorporated into other products or is used for institutional or other commercial purposes.
- Loss of customer's software, firmware, information, or memory data.
- Improper handling or installation.

6.5 GPL Statement

This product contains free software which is licensed under the GNU General Public License. After you purchase this product, you may procure, modify or distribute the source code of the GPL/LGPL software that is used in this product.

To obtain a copy of our open source software, please contact our support center and we will provide you with a CD-ROM of the source code that is used, charging only the actual expense involved. However, please be noted that we can not provide guarantee with the source code, and there is also no technical support for the source code from us.

Technical Support

Diamond Technical Support staff is here to help resolve any issues that you may be experiencing. Prior to contacting technical support please make sure you have the following information available.

1. Model #: (Printed on the bar code, located on the box)
2. Installation CD Version: (printed on the CD label)
3. The version of Windows that your system is running.
4. The manufacturer and model # of your computer.
5. CPU type and speed (example: Intel Pentium4 2.4GHZ)
6. A complete description of the problem that you are experiencing including any steps that you have taken to try to resolve the issue.

Technical Support Options

Free Telephone Support

818-357-5165

(long distance rates may apply)

Mon - Fri, 8 - 4:30 PST

<http://www.diamondmm.com>

TWO YEAR LIMITED WARRANTY

Starting June 1st 2009 all Diamond products will have an optional TWO (2) YEAR LIMITED WARRANTY WITH PRODUCT REGISTRATION. All Diamond Products must be registered within 30 day from the original date of purchase to be eligible for the 2nd year warranty. (All products not registered within 30 days of purchase will only qualify for the original one year limited warranty.) Please register your product at <http://www.diamondmm.com/support.php>

Full details for the two year limited warranty are the same as the one year limited warranty below.

SHIPPING

Starting June 1st 2009 Diamond Multimedia will pay for shipping cost from Diamond back to US and Canadian customers provided the product is indeed under warranty and there is no damage caused by improper installation or modification of the merchandise. Customers located outside of the United States and Canada or using military addresses (APO,etc) will be required to pay for return shipping. Average shipping times range from 5 to 10 days, depending on actual shipment destination. Shipments made outside the US may take longer to deliver.

Diamond Multimedia reserves the right to claim for shipping fees along with service charges for any product that is returned incomplete or not under warranty. Return Authorization (RMA) is required for all warranty return products.

ONE YEAR LIMITED WARRANTY

The warranty described below is extended only to the original buyer and is not transferable.

Diamond warrants to the original purchaser of the hardware product, that the product is free from defects in materials or workmanship under normal use and service for a period of one (1) year from the date of purchase. All cables and accessories provided with a Diamond product are warranted to be free from defects in materials or workmanship under normal use and service for a period of for (90) ninety days from date of purchase.

Diamond's sole obligation under this warranty shall be, at Diamond's option, to: (I) repair the defective product or parts; (II) deliver to customer an equivalent product or part to replace the defective product. When a product or part is replaced or exchanged, that item becomes the customer's property and the replaced or exchanged item becomes Diamond's property. When a refund or replacement product is given, the defective product becomes Diamond's property. Replacement parts or products may be new or include serviceable used parts with at least the same functional equivalence to the original product. If, at the time of repair, a product is "out of warranty" or within the last ninety (90) days of the warranty period, Diamond warrants any repair for ninety (90) days. All software provided is subject to the terms of the associated software end-user license agreement.

WARRANTY EXCLUSIONS AND LIMITATIONS

TO BE ELIGIBLE FOR THIS WARRANTY, YOU NEED TO PROVIDE THE ORIGINAL SALES RECEIPT SHOWING THE DATE OF PURCHASE OF THE PRODUCT. DIAMOND MAY REQUEST THE ORIGINAL SALES RECEIPT OR A COPY AS PROOF OF THE DATE OF PURCHASE.

Diamond does not warrant third party products which Diamond distributes "AS IS" unless otherwise specified. Third party products may be warranted by the third party.

Diamond makes no warranty or representation that: (I) the operation of the product will be uninterrupted or error free; (II) defects in the product will be corrected; or (III) that the product will meet Customer's requirements or work in combination with any hardware or software provided by third parties.

TO THE FULLEST EXTENT ALLOWED BY LAW, THE WARRANTIES, REMEDIES AND LIMITATIONS CONTAINED HEREIN ARE EXCLUSIVE AND ARE IN LIEU OF ALL OTHER WARRANTIES, TERMS OR CONDITIONS, EXPRESS OR IMPLIED, EITHER IN FACT OR BY OPERATION OF LAW, STATUTORY OR OTHERWISE, INCLUDING WITHOUT LIMITATION, WARRANTIES, TERMS OR CONDITIONS OF MERCHANTABILITY, FITNESS FOR A PARTICULAR PURPOSE, QUALITY, CORRESPONDENCE WITH DESCRIPTION AND NON-INFRINGEMENT, ALL OF WHICH ARE EXPRESSLY DISCLAIMED.

DIAMOND WILL NOT BE LIABLE UNDER THIS WARRANTY IF ITS TESTING AND EXAMINATION DISCLOSE THAT THE ALLEGED DEFECT OR MALFUNCTION IN THE PRODUCT OR SOFTWARE DOES NOT EXIST OR WAS CAUSED BY CUSTOMER'S OR ANY THIRD PARTY'S MISUSE, NEGLIGENCE, IMPROPER INSTALLATION OR TESTING, UNAUTHORIZED ATTEMPTS TO OPEN, REPAIR OR MODIFY THE PRODUCT OR SOFTWARE, OR ANY OTHER CAUSE BEYOND THE RANGE OF THE INTENDED USE, OR BY ACCIDENT, FIRE, LIGHTNING, OTHER HAZARDS, OR ACTS OF GOD. THIS WARRANTY WILL NOT APPLY TO PRODUCTS USED FOR NUCLEAR RELATED, WEAPONS RELATED, MEDICAL OR LIFE SAVING PURPOSES.

TO THE FULLEST EXTENT ALLOWED BY LAW, DIAMOND ALSO EXCLUDES FOR ITSELF AND ITS SUPPLIERS ANY LIABILITY, WHETHER BASED IN CONTRACT OR TORT (INCLUDING NEGLIGENCE), FOR INCIDENTAL, CONSEQUENTIAL, INDIRECT, SPECIAL OR PUNITIVE DAMAGES OF ANY KIND, OR FOR LOSS OF REVENUE OR PROFITS, LOSS OF BUSINESS, LOSS OF INFORMATION OR DATA, OR OTHER FINANCIAL LOSS ARISING OUT OF OR IN CONNECTION WITH THE SALE, INSTALLATION, MAINTENANCE, USE, PERFORMANCE, FAILURE, OR INTERRUPTION OF ITS PRODUCTS, EVEN IF DIAMOND, ITS SUPPLIERS OR ITS RESELLER HAS BEEN ADVISED OF THE POSSIBILITY OF SUCH

DAMAGES. DIAMOND'S SOLE LIABILITY WITH RESPECT TO ITS PRODUCT IS LIMITED TO REPAIR OR REPLACEMENT OF THE PRODUCT, AT DIAMOND 'S OPTION. THIS DISCLAIMER OF LIABILITY FOR DAMAGES WILL NOT BE AFFECTED IF ANY REMEDY PROVIDED HEREIN SHALL FAIL FOR ESSENTIAL PURPOSE.

DISCLAIMER: Some jurisdictions may not allow the exclusion or limitation of incidental or consequential damages for products supplied to consumers, or the limitation of liability for personal injury, so the foregoing limitations and exclusions may not apply or may be limited in their application to you. When implied warranties are not allowed to be excluded in their entirety, they will be limited to the duration of the applicable written warranty. This warranty gives you specific legal rights that may vary depending on the law of the applicable jurisdiction.

OBTAINING WARRANTY SERVICE: Please review the "help" resources referred to in your products accompanying documentation before seeking warranty service. If the product is still not functioning properly after making use of these resources, please access the support page at <http://www.diamondmm.com/support.php> for warranty instructions and services. Some additional charges may apply for phone support.