

## 20180226\_System check\_Diple2450v2 SN728

Frequency: 2450 MHz; Duty Cycle: 1:1; Room Ambient Temperature: 24.0°C; Liquid Temperature: 23.5°C  
 Medium parameters used (interpolated):  $f = 2450$  MHz;  $\sigma = 2.037$  S/m;  $\epsilon_r = 52.071$ ;  $\rho = 1000$  kg/m<sup>3</sup>

DASY5 Configuration:

- Area Scan Setting - Find Secondary Maximum Within: 2.0 dB and with a peak SAR value greater than 0.0012W/kg
- Electronics: DAE4 Sn877; Calibrated: 2017/3/20
- Probe: EX3DV4 - SN3665; ConvF(7.64, 7.64, 7.64); Calibrated: 2017/5/24;
- Sensor-Surface: 1.4mm (Mechanical Surface Detection)
- Phantom: ELI 4.0; Type: QDOVA001BA; Serial: 1056

**Body/Pin=100mW, d=10mm/Area Scan (9x11x1):** Measurement grid: dx=12mm, dy=12mm

[Info: Interpolated medium parameters used for SAR evaluation.](#)

Maximum value of SAR (measured) = 7.35 W/kg

**Body/Pin=100mW, d=10mm/Zoom Scan (7x7x7)/Cube 0:** Measurement grid: dx=5mm, dy=5mm, dz=5mm

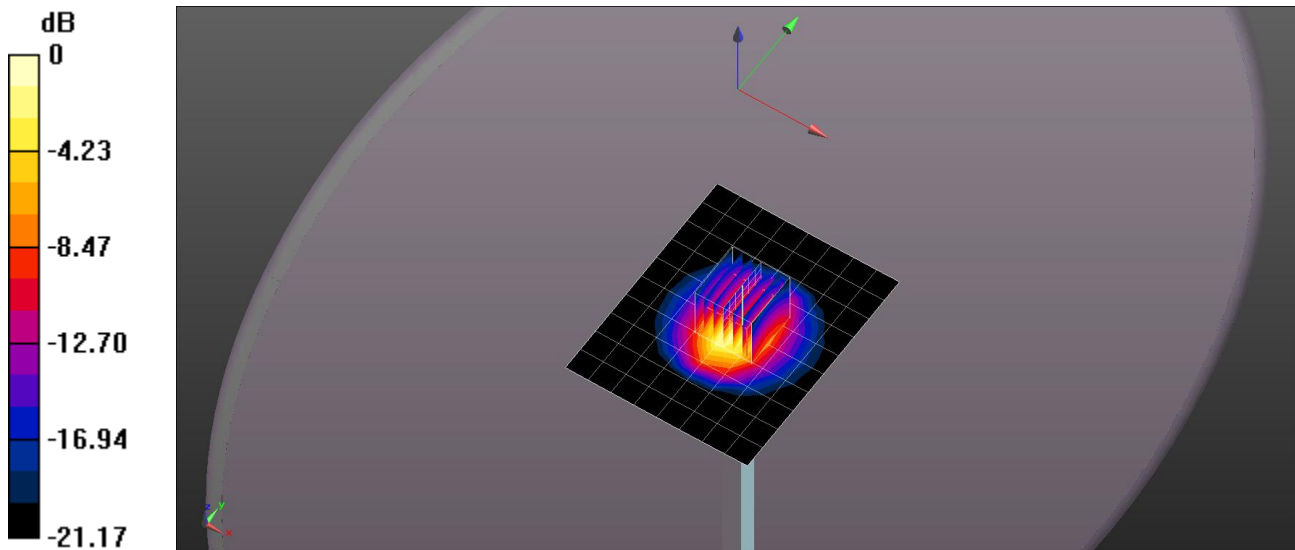
Reference Value = 76.34 V/m; Power Drift = -0.15 dB

Peak SAR (extrapolated) = 10.3 W/kg

**SAR(1 g) = 5.1 W/kg; SAR(10 g) = 2.41 W/kg**

[Info: Interpolated medium parameters used for SAR evaluation.](#)

Maximum value of SAR (measured) = 8.37 W/kg



0 dB = 8.37 W/kg = 9.23 dBW/kg

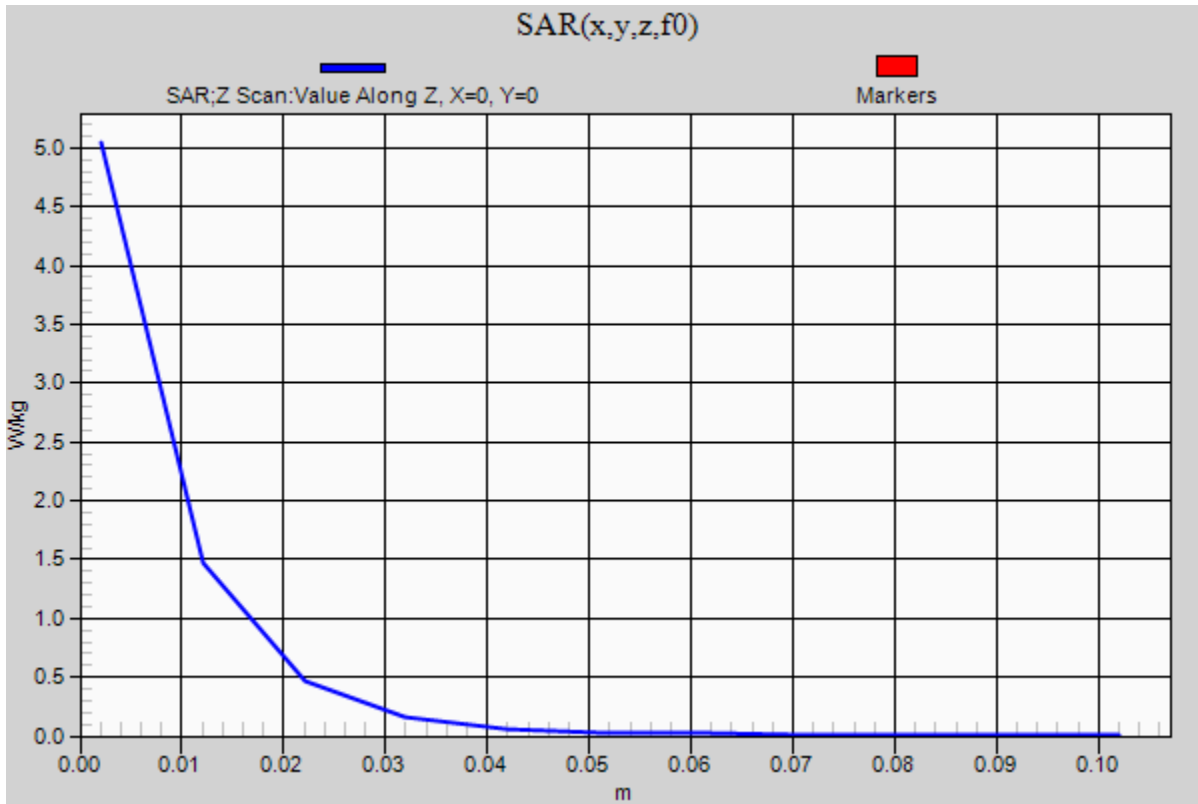
### 20180226\_System check\_Diple2450v2 SN728

Frequency: 2450 MHz; Duty Cycle: 1:1

**Body/Pin=100mW, d=10mm/Z Scan (1x1x11):** Measurement grid: dx=20mm, dy=20mm, dz=10mm

Info: [Interpolated medium parameters used for SAR evaluation.](#)

Maximum value of SAR (measured) = 5.04 W/kg



## 20180227\_System check\_Diple5GHzv2 SN1004

Frequency: 5300 MHz; Duty Cycle: 1:1; Room Ambient Temperature: 24.5°C; Liquid Temperature: 24.0°C

Medium parameters used:  $f = 5300.2$  MHz;  $\sigma = 5.554$  S/m;  $\epsilon_r = 48.792$ ;  $\rho = 1000$  kg/m<sup>3</sup>

DASY5 Configuration:

- Area Scan Setting - Find Secondary Maximum Within: 2.0 dB and with a peak SAR value greater than 0.0012W/kg
- Electronics: DAE4 Sn877; Calibrated: 2017/3/20
- Probe: EX3DV4 - SN3665; ConvF(4.58, 4.58, 4.58); Calibrated: 2017/5/24;
- Sensor-Surface: 1.4mm (Mechanical Surface Detection)
- Phantom: ELI 4.0; Type: QDOVA001BA; Serial: 1056

**Body/5300MHz,Pin=100mW,d=10mm/Area Scan (7x7x1):** Measurement grid: dx=10mm, dy=10mm

Maximum value of SAR (measured) = 20.7 W/kg

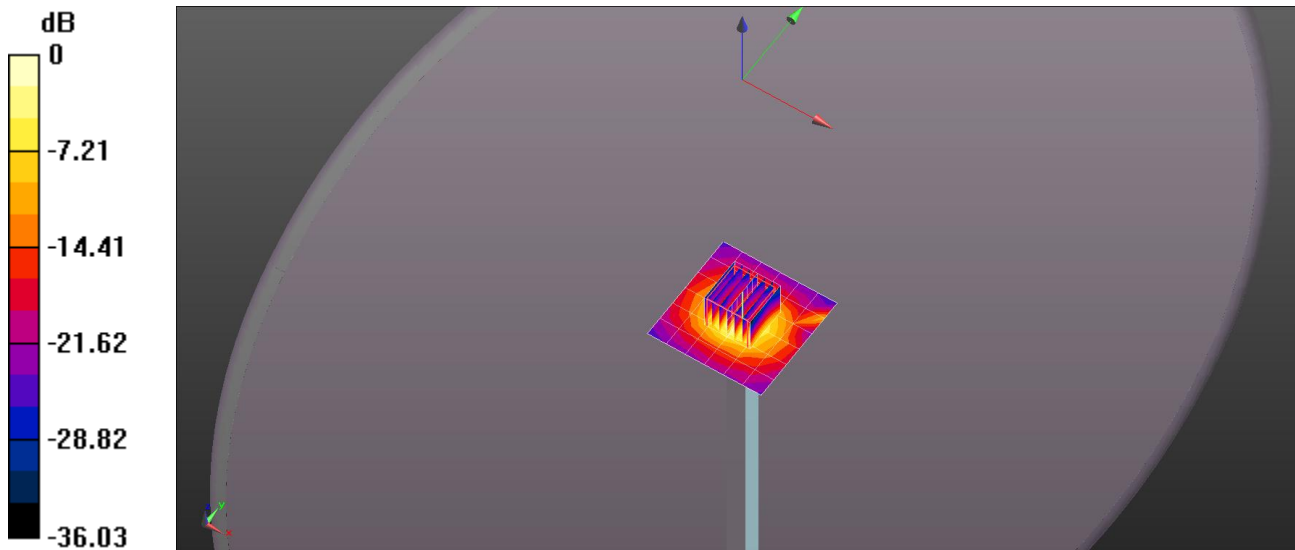
**Body/5300MHz,Pin=100mW,d=10mm/Zoom Scan (7x7x6)/Cube 0:** Measurement grid: dx=4mm,

dy=4mm, dz=1.4mm

Reference Value = 40.59 V/m; Power Drift = 0.04 dB

Peak SAR (extrapolated) = 35.4 W/kg

**SAR(1 g) = 8.05 W/kg; SAR(10 g) = 2.34 W/kg**



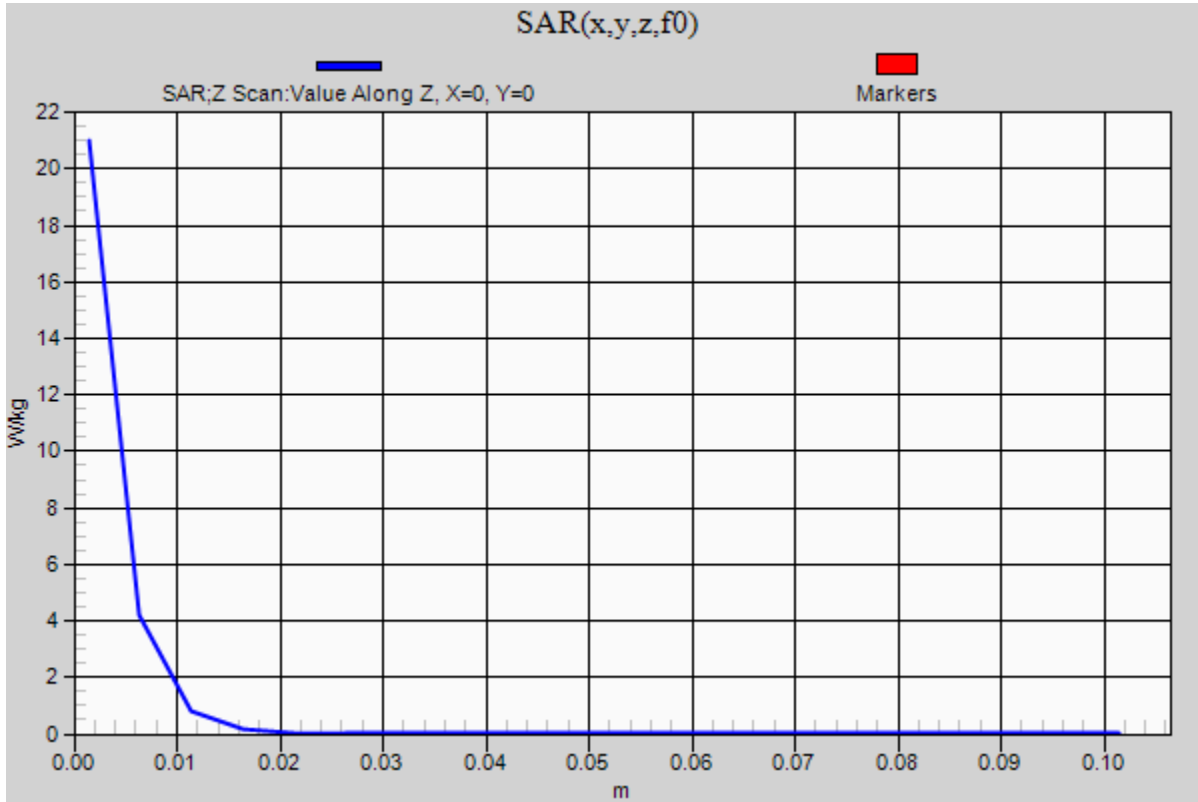
0 dB = 20.7 W/kg = 13.16 dBW/kg

### 20180227\_System check\_Diple5GHzv2 SN1004

Frequency: 5300 MHz; Duty Cycle: 1:1

**Body/5300MHz,Pin=100mW,d=10mm/Z Scan (1x1x21):** Measurement grid: dx=20mm, dy=20mm, dz=5mm

Maximum value of SAR (measured) = 21.0 W/kg



## 20180227\_System check\_Diple5GHzv2 SN1004

Frequency: 5600 MHz; Duty Cycle: 1:1; Room Ambient Temperature: 24.5°C; Liquid Temperature: 24.0°C

Medium parameters used:  $f = 5600.5$  MHz;  $\sigma = 6.029$  S/m;  $\epsilon_r = 48.127$ ;  $\rho = 1000$  kg/m<sup>3</sup>

DASY5 Configuration:

- Area Scan Setting - Find Secondary Maximum Within: 2.0 dB and with a peak SAR value greater than 0.0012W/kg
- Electronics: DAE4 Sn877; Calibrated: 2017/3/20
- Probe: EX3DV4 - SN3665; ConvF(3.99, 3.99, 3.99); Calibrated: 2017/5/24;
- Sensor-Surface: 1.4mm (Mechanical Surface Detection)
- Phantom: ELI 4.0; Type: QDOVA001BA; Serial: 1056

**Body/5600MHz,Pin=100mW,d=10mm/Area Scan (7x7x1):** Measurement grid: dx=10mm, dy=10mm

Maximum value of SAR (measured) = 21.4 W/kg

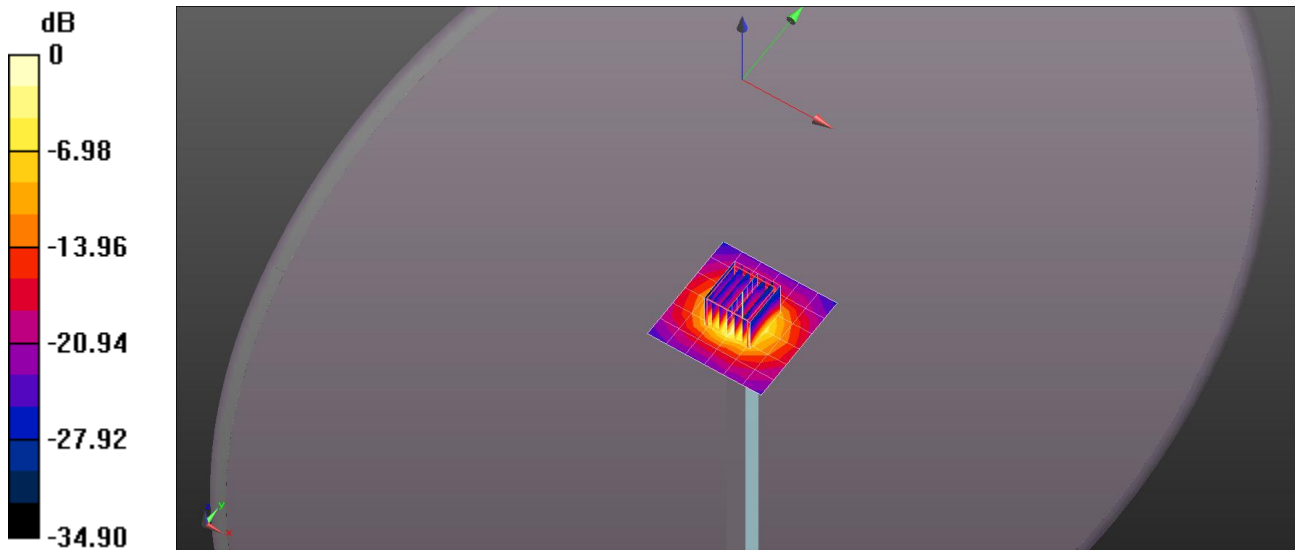
**Body/5600MHz,Pin=100mW,d=10mm/Zoom Scan (7x7x6)/Cube 0:** Measurement grid: dx=4mm, dy=4mm, dz=1.4mm

Reference Value = 39.84 V/m; Power Drift = -0.07 dB

Peak SAR (extrapolated) = 36.1 W/kg

**SAR(1 g) = 8.18 W/kg; SAR(10 g) = 2.35 W/kg**

Maximum value of SAR (measured) = 21.3 W/kg



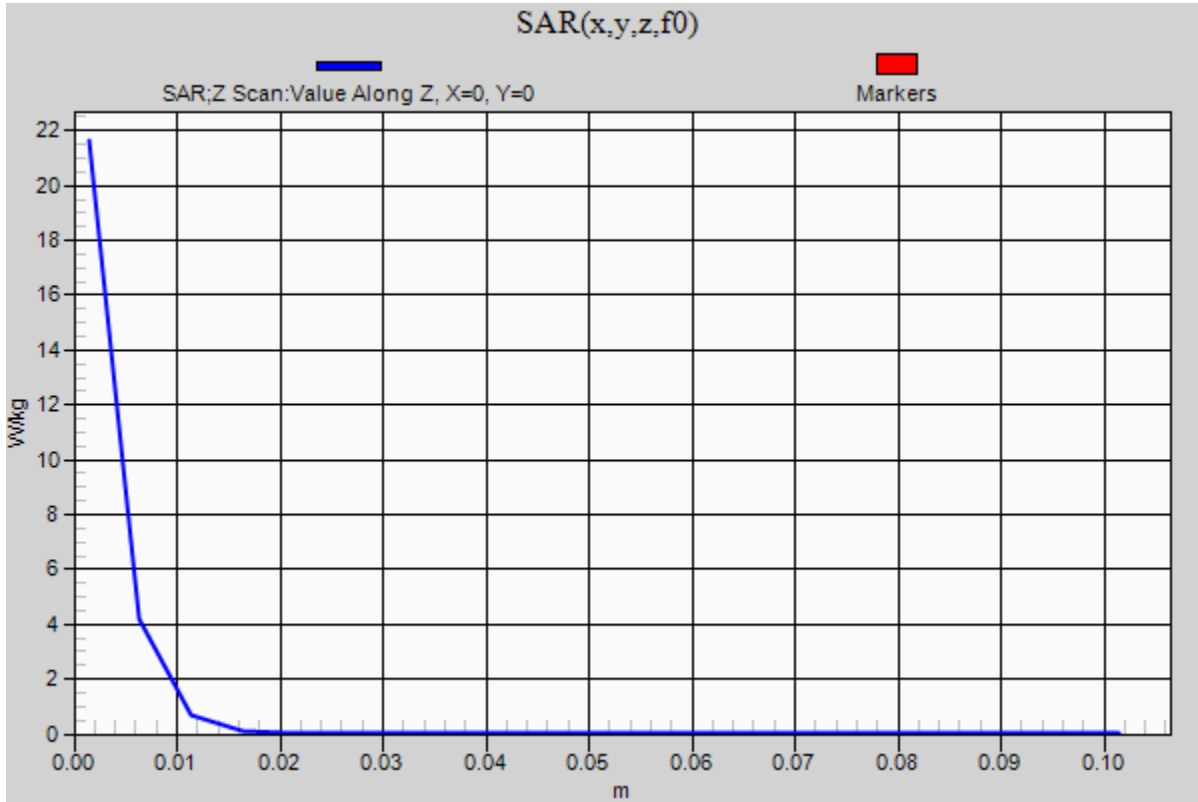
0 dB = 21.3 W/kg = 13.28 dBW/kg

### 20180227\_System check\_Diple5GHzv2 SN1004

Frequency: 5600 MHz; Duty Cycle: 1:1

**Body/5600MHz,Pin=100mW,d=10mm/Z Scan (1x1x21):** Measurement grid: dx=20mm, dy=20mm, dz=5mm

Maximum value of SAR (measured) = 21.6 W/kg



## 20180227\_System check\_Diple5GHzv2 SN1004

Frequency: 5800 MHz; Duty Cycle: 1:1; Room Ambient Temperature: 24.5°C; Liquid Temperature: 24.0°C  
 Medium parameters used (interpolated):  $f = 5800$  MHz;  $\sigma = 6.283$  S/m;  $\epsilon_r = 47.612$ ;  $\rho = 1000$  kg/m<sup>3</sup>

DASY5 Configuration:

- Area Scan Setting - Find Secondary Maximum Within: 2.0 dB and with a peak SAR value greater than 0.0012W/kg
- Electronics: DAE4 Sn877; Calibrated: 2017/3/20
- Probe: EX3DV4 - SN3665; ConvF(4.19, 4.19, 4.19); Calibrated: 2017/5/24;
- Sensor-Surface: 1.4mm (Mechanical Surface Detection)
- Phantom: ELI 4.0; Type: QDOVA001BA; Serial: 1056

**Body/5800MHz,Pin=100mW,d=10mm/Area Scan (7x7x1):** Measurement grid: dx=10mm, dy=10mm

[Info: Interpolated medium parameters used for SAR evaluation.](#)

Maximum value of SAR (measured) = 19.9 W/kg

**Body/5800MHz,Pin=100mW,d=10mm/Zoom Scan (7x7x6)/Cube 0:** Measurement grid: dx=4mm, dy=4mm, dz=1.4mm

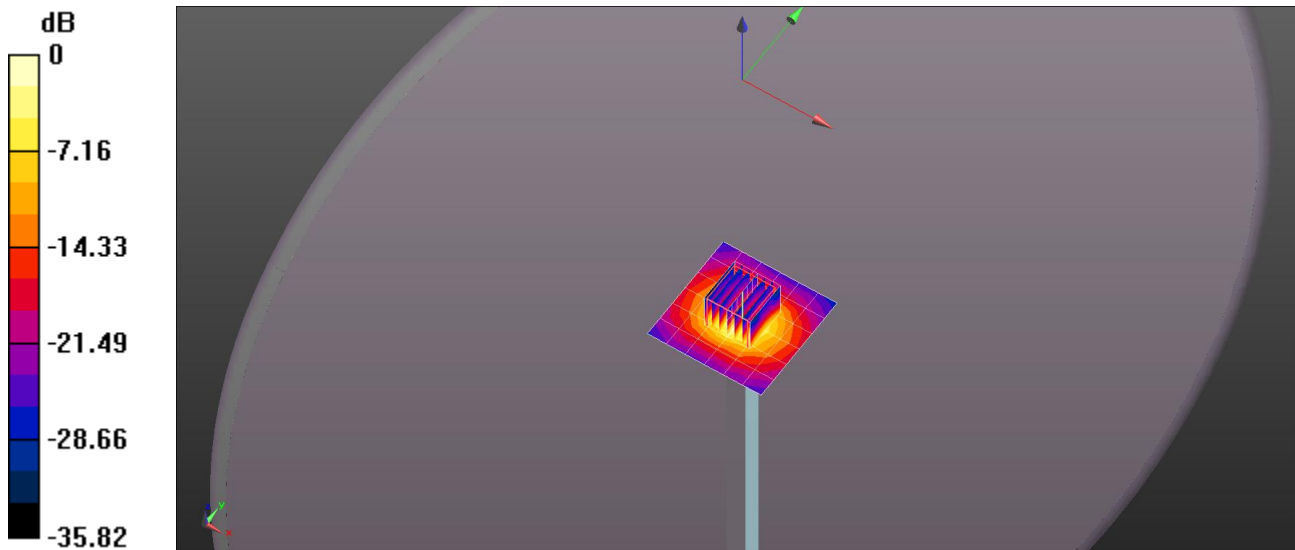
Reference Value = 36.95 V/m; Power Drift = 0.01 dB

Peak SAR (extrapolated) = 35.3 W/kg

**SAR(1 g) = 7.62 W/kg; SAR(10 g) = 2.19 W/kg**

[Info: Interpolated medium parameters used for SAR evaluation.](#)

Maximum value of SAR (measured) = 20.3 W/kg



0 dB = 20.3 W/kg = 13.07 dBW/kg

### 20180227\_System check\_Diple5GHzv2 SN1004

Frequency: 5800 MHz; Duty Cycle: 1:1

**Body/5800MHz,Pin=100mW,d=10mm/Z Scan (1x1x21):** Measurement grid: dx=20mm, dy=20mm, dz=5mm

Info: [Interpolated medium parameters used for SAR evaluation.](#)

Maximum value of SAR (measured) = 18.3 W/kg

