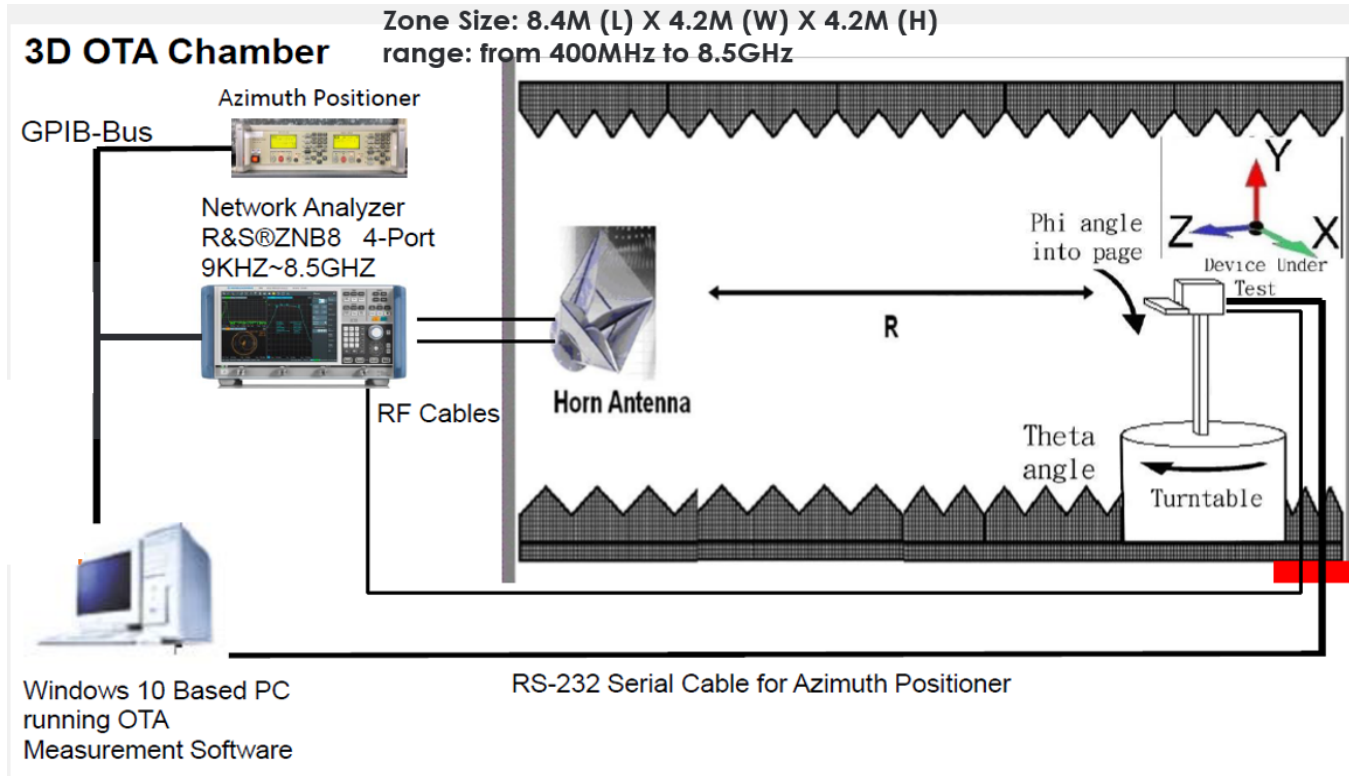


Test configuration



Well Green Technology Co., Ltd

No. 20, Alley51, Lane 118, ShuangLian Sec.2, Mintzu Rd.,
PingJen City, TaoYuan Hsien, Taiwan, R.O.C
TEL: (03)420-6428 FAX: (03) 420-6418



Item	Device	Type/Model	Serial#	Manufacturer	Cal. Date	Cal. Due Date
1	Anechoic Chamber	W448	N/A	N/A	2021/4/1	2023/4/1
2	Turn Table	MF9532	-	Azimuth	N/A	N/A
3	Multi-Device Positioning Controller	MF7802	-	Azimuth	2021/11/1	2023/11/1
4	Network Analyzer	ZNB8	-	R&S	2021/11/1	2023/11/1
5	Horn Antenna	HA-0707	96143	TRC	2021/4/1	2022/4/1
6	Cable 7.5mm 400MHz to 18GHz(H-pol)	SS402	00100A1	WOKEN	2021/4/1	2023/4/1
7	Cable 7.5mm 400MHz to 18GHz(V-pol)	SS402	00100A1	WOKEN	2021/4/1	2023/4/1
8	Cable 14mm 400MHz to 18GHz	SS402	00100A1	WOKEN	2021/4/1	2023/4/1

DUT Information	
System Code / Stage	U11
ProjectPilot	Prototype
WLAN Main	2400MHz~7200MHz
WLAN Aux	2400MHz~7200MHz
Antenna Type	PIFA

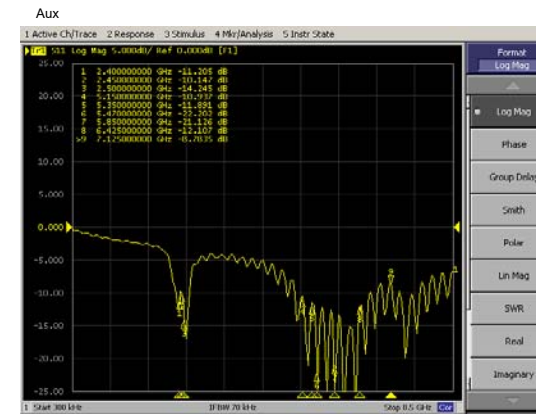
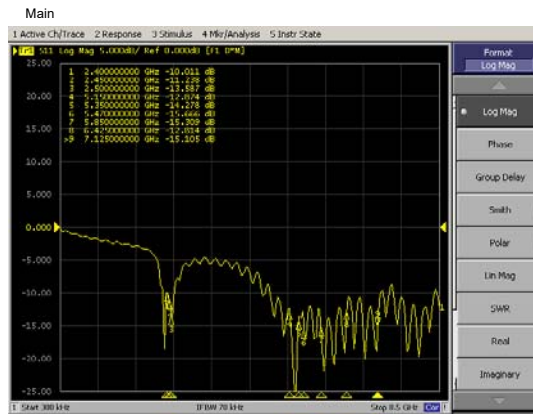
Antenna information :

Brand : WGT

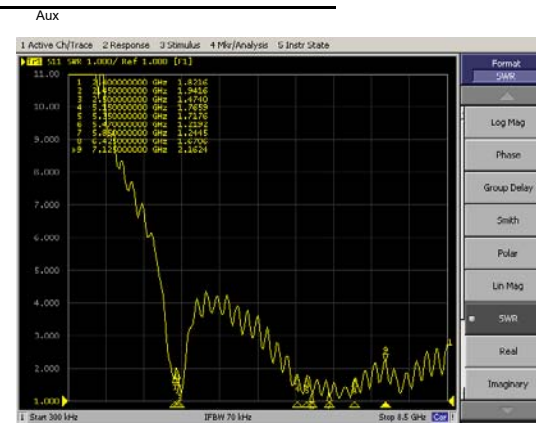
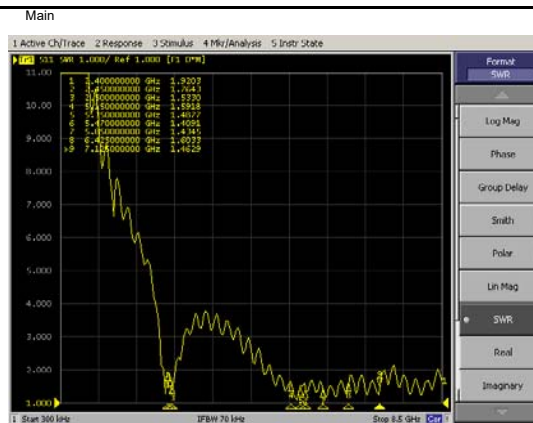
WLAN Main Part No. **TWU11WIPB01+A**

WLAN Aux Part No. **TWU11WIPB02+A**


Return Loss




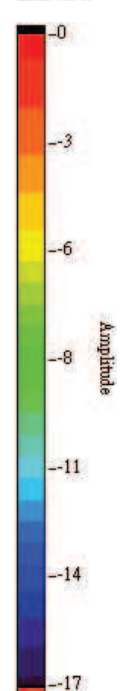
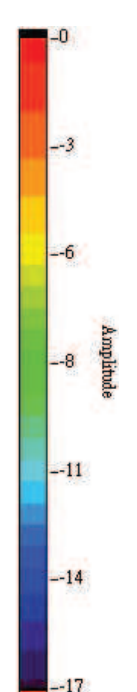
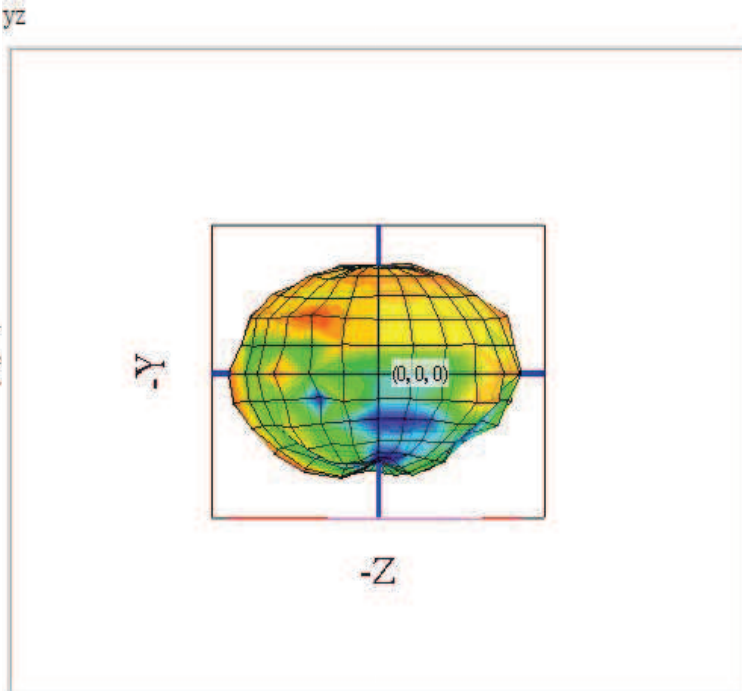
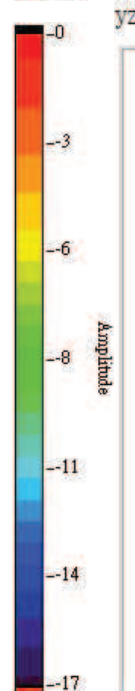
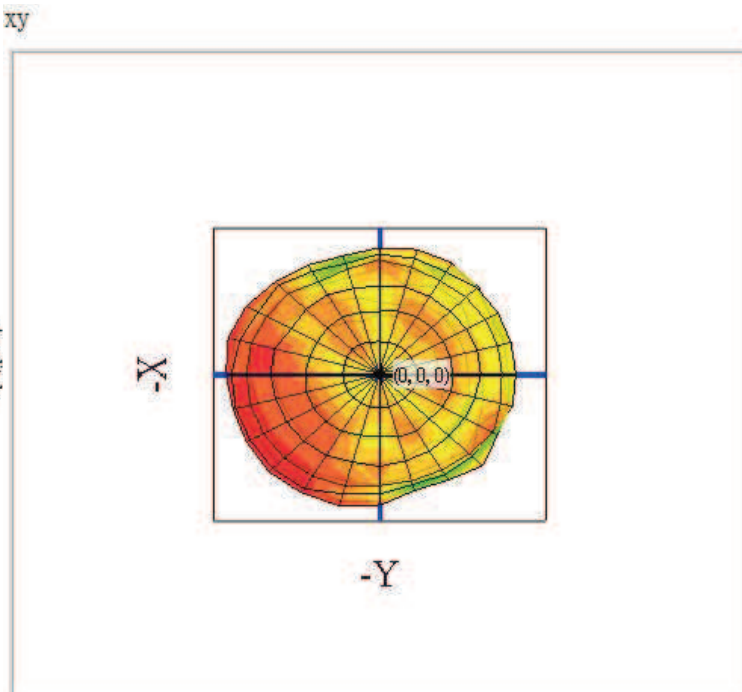
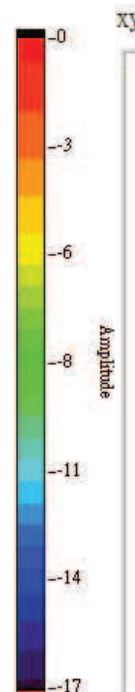
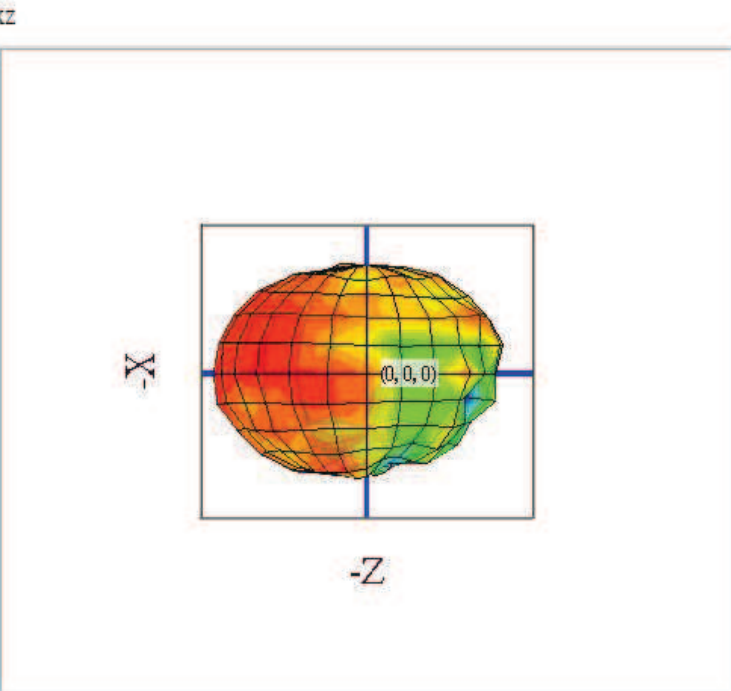
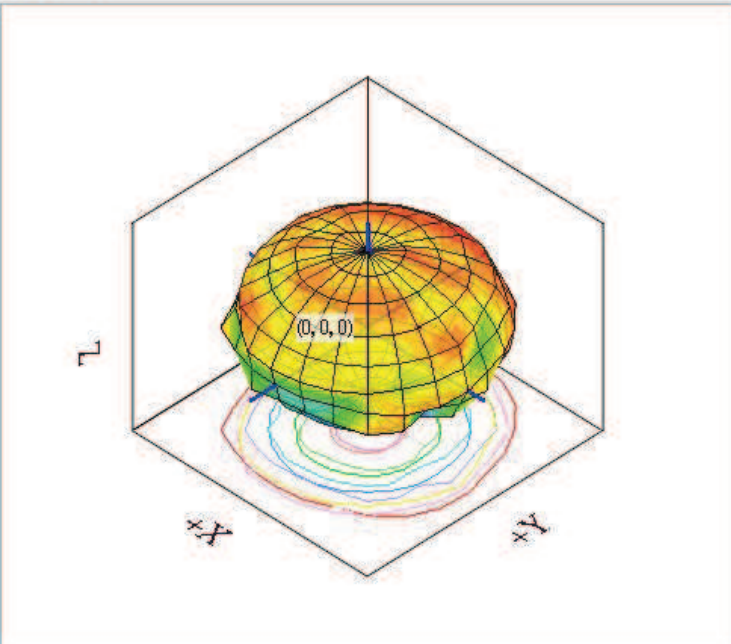
VSWR



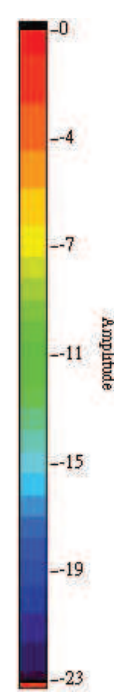
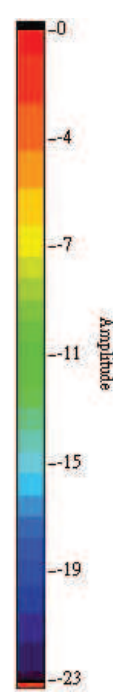
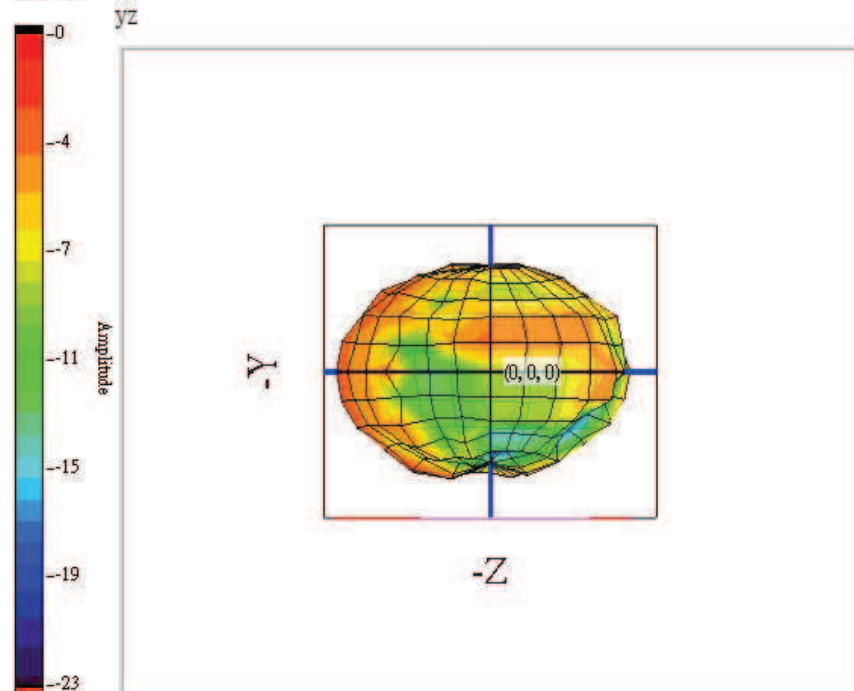
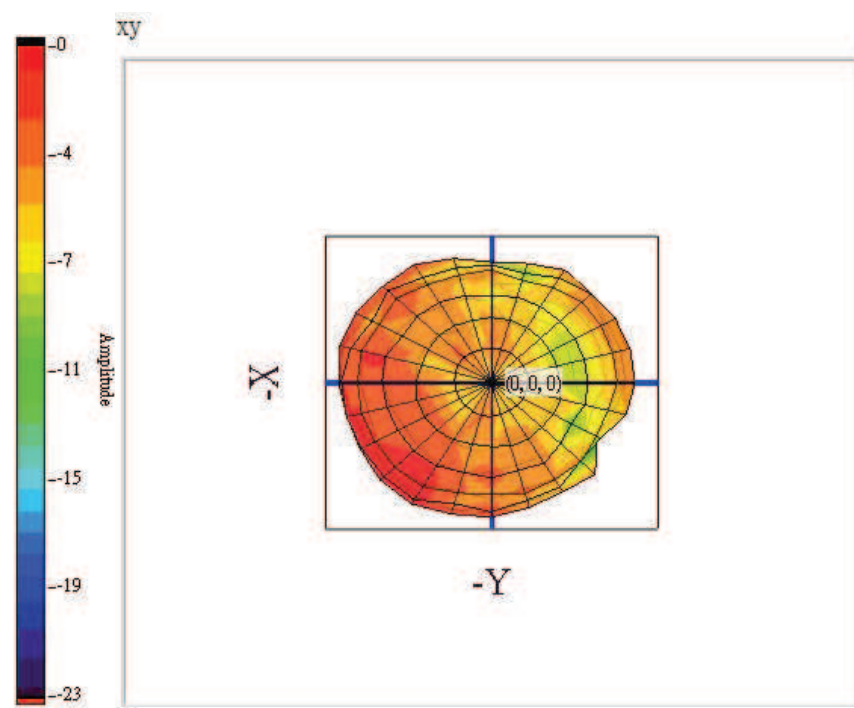
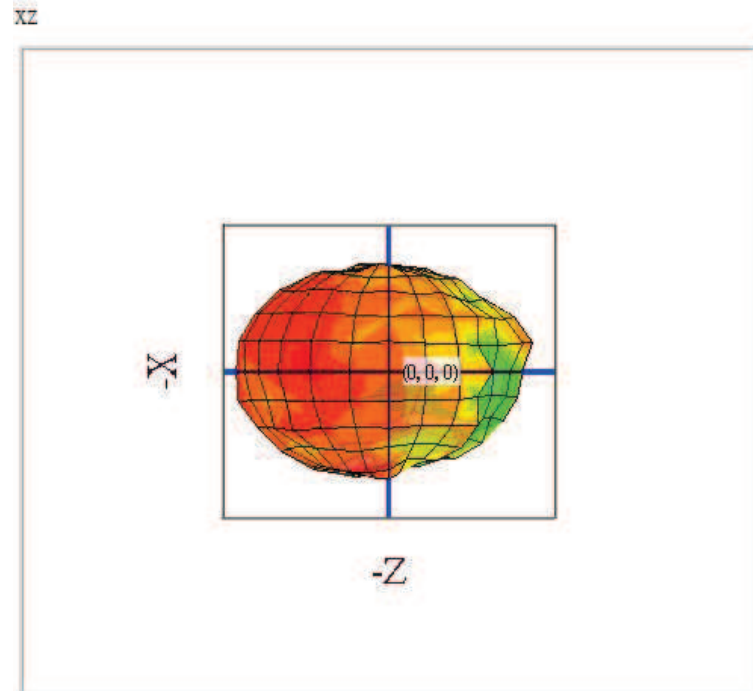
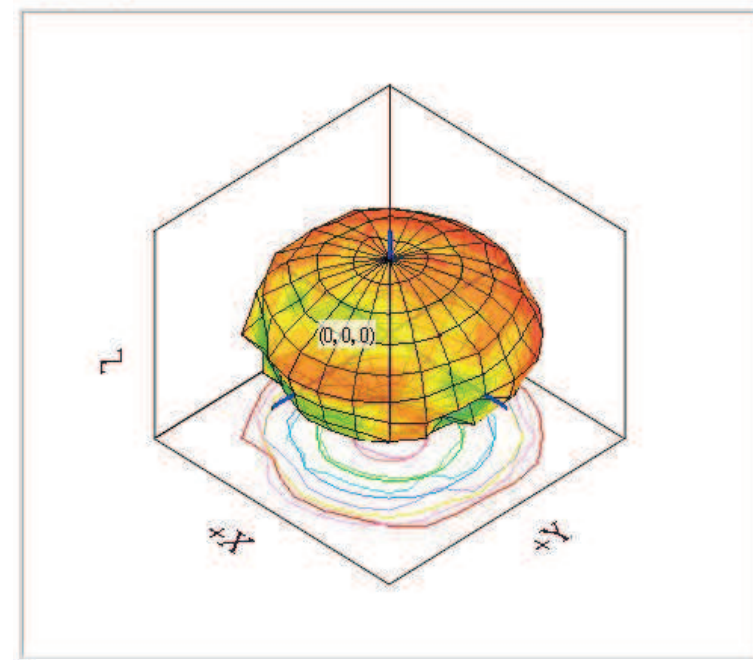
Radiation Pattern of XY Plane Testing Result

Main Antenna

 C:\Users\
 Desktop\Z14AK V

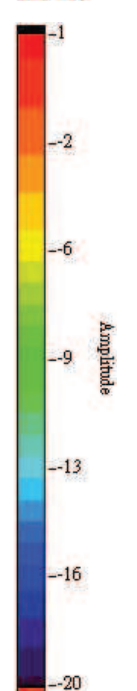
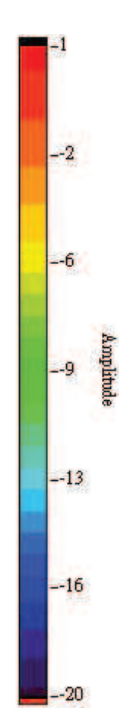
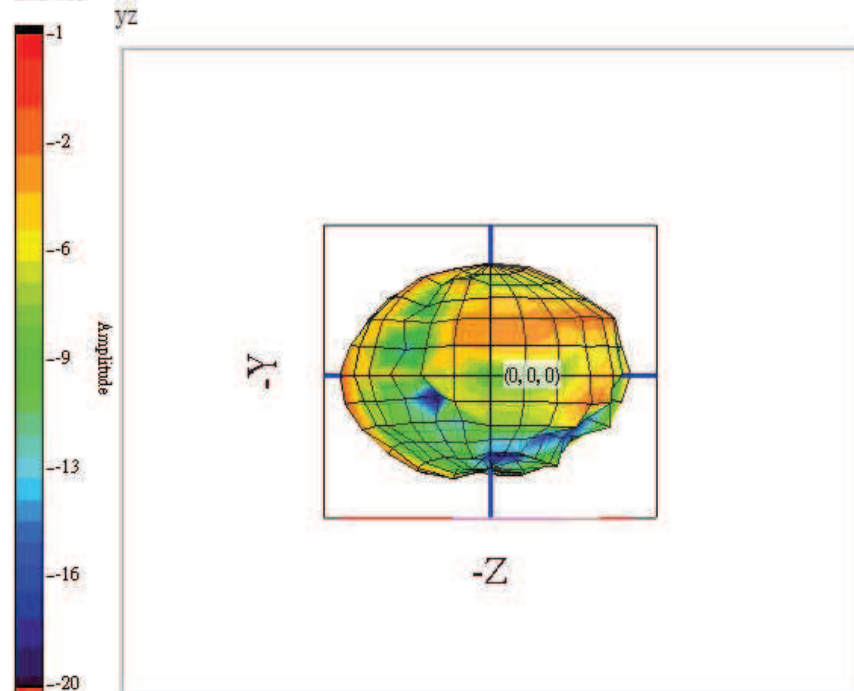
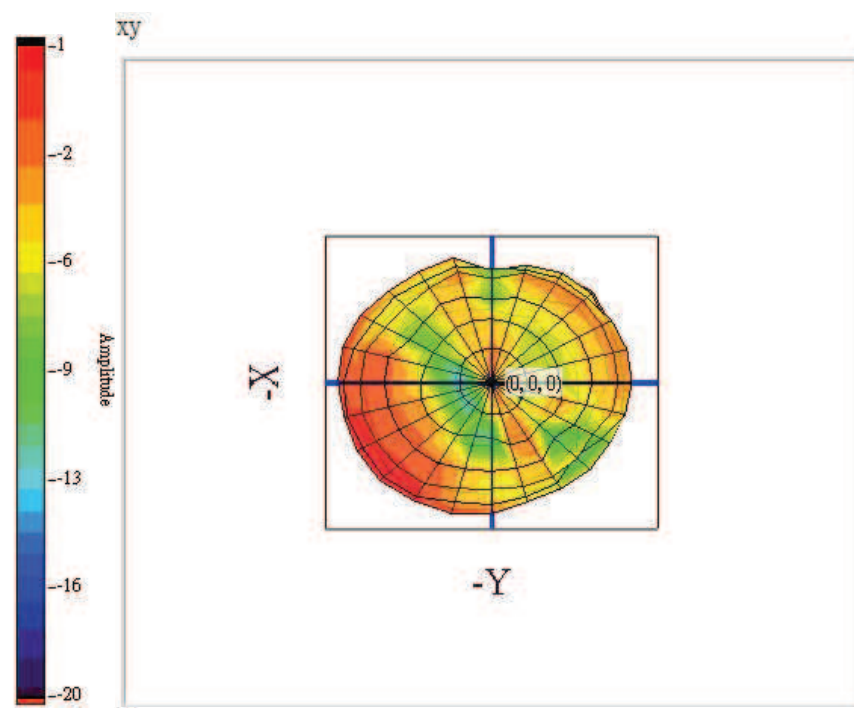
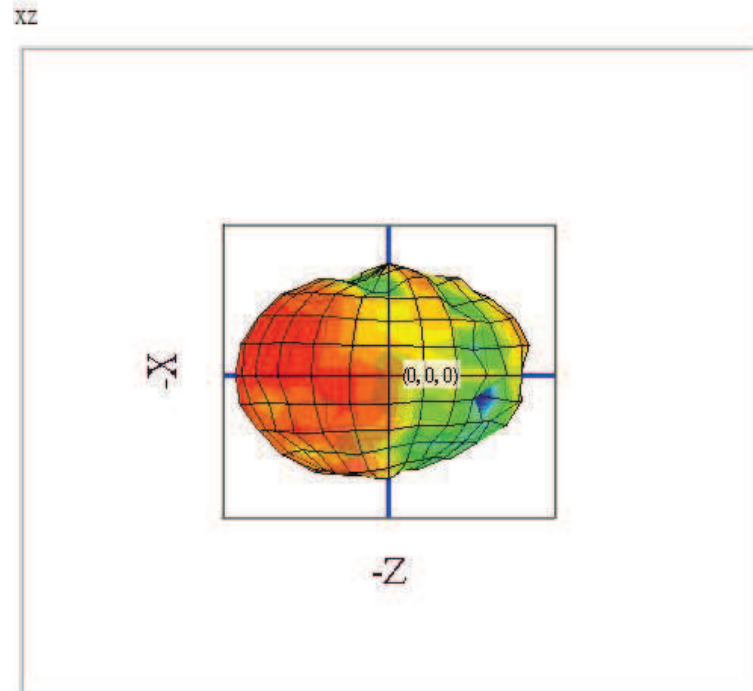
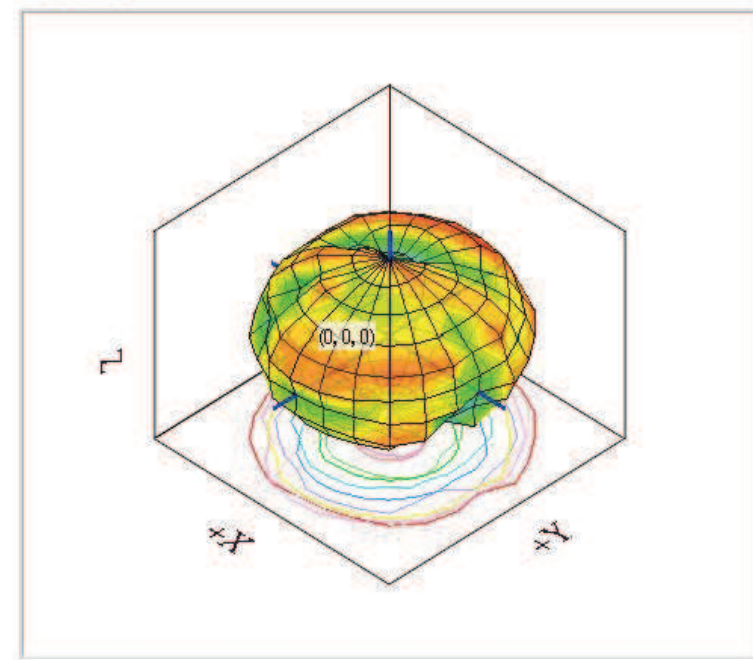
Aux Antenna

 C:\Users\
 Desktop\Z14AK V



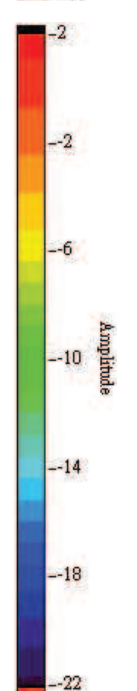
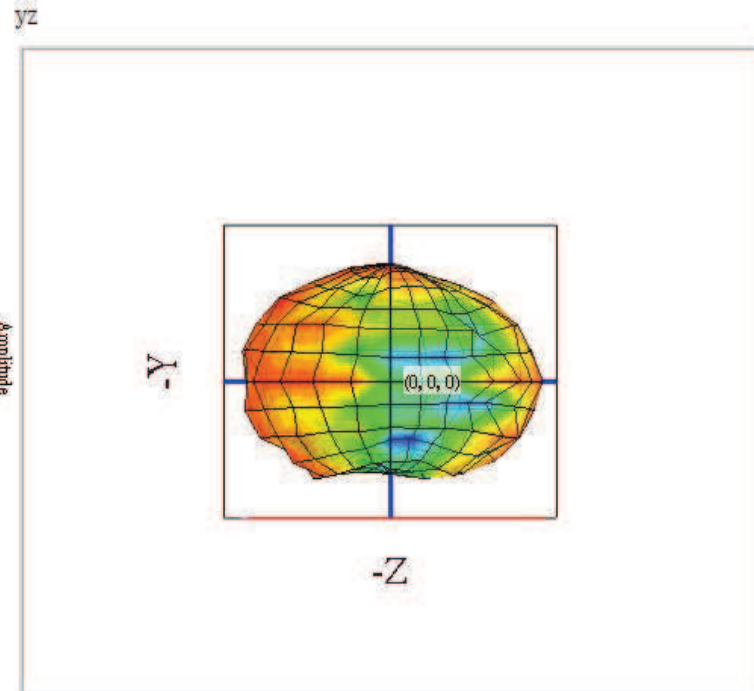
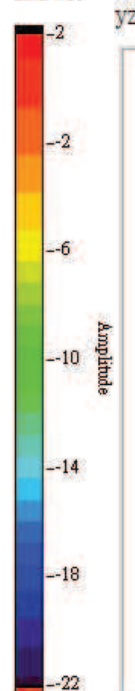
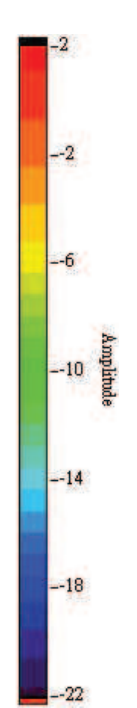
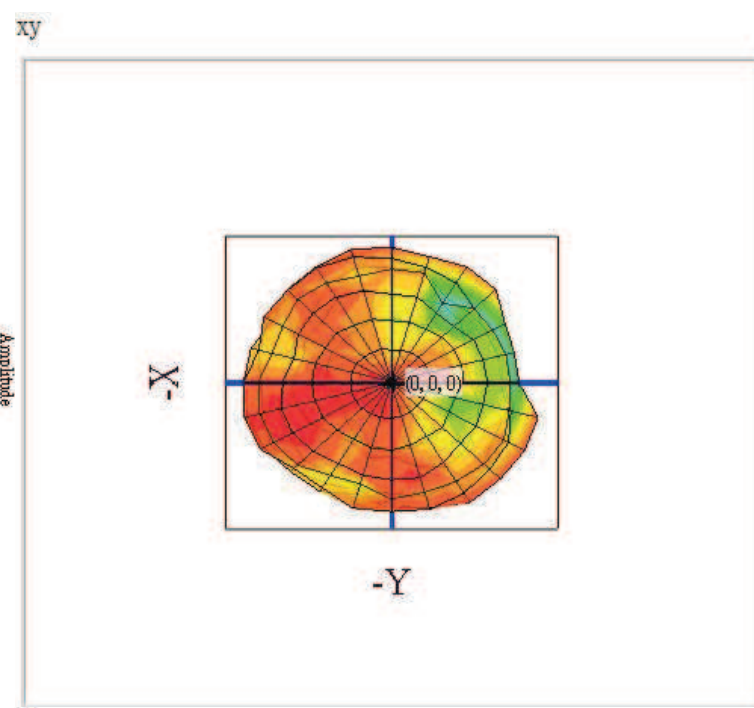
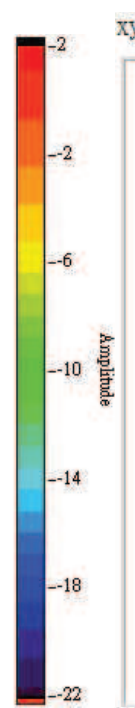
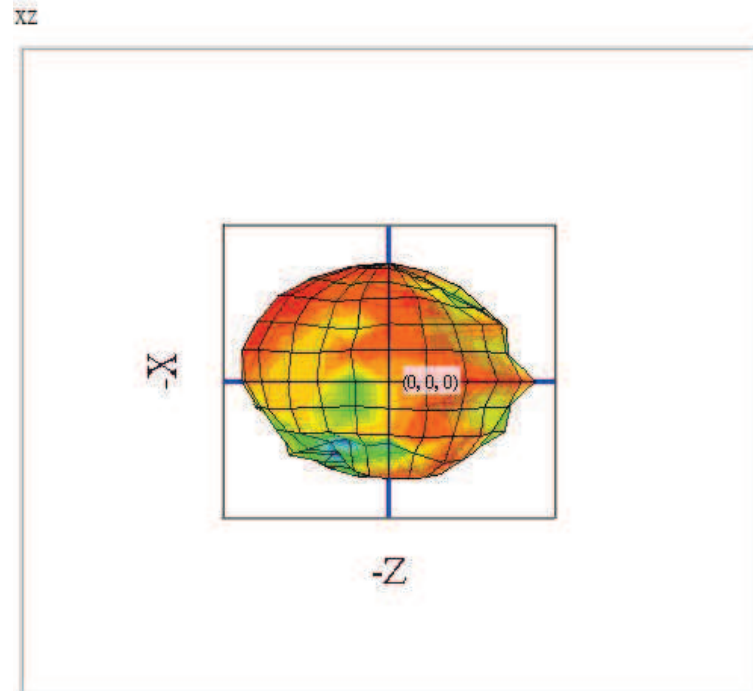
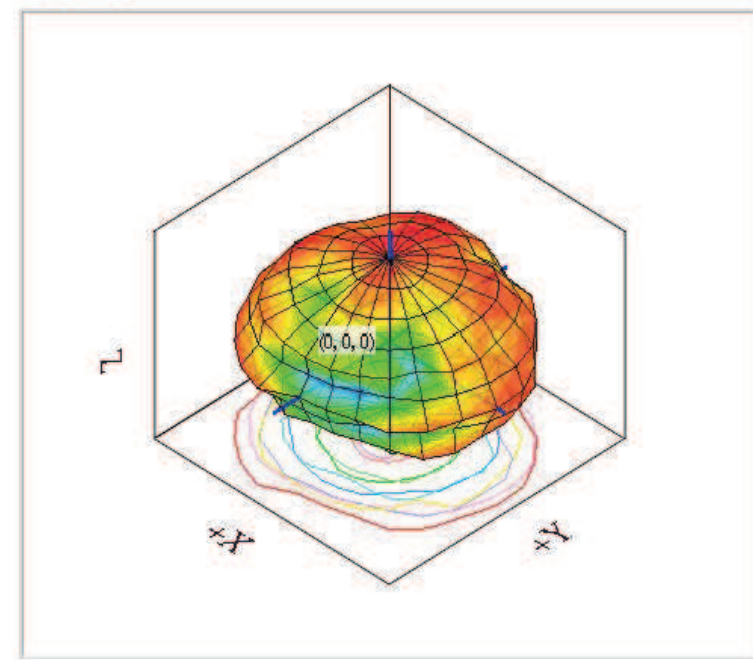
userdefine



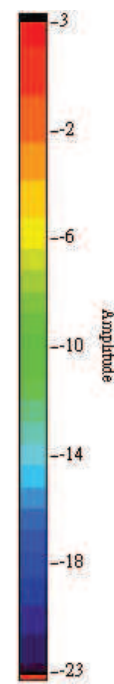
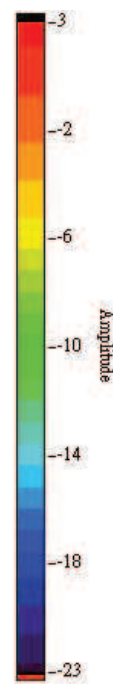
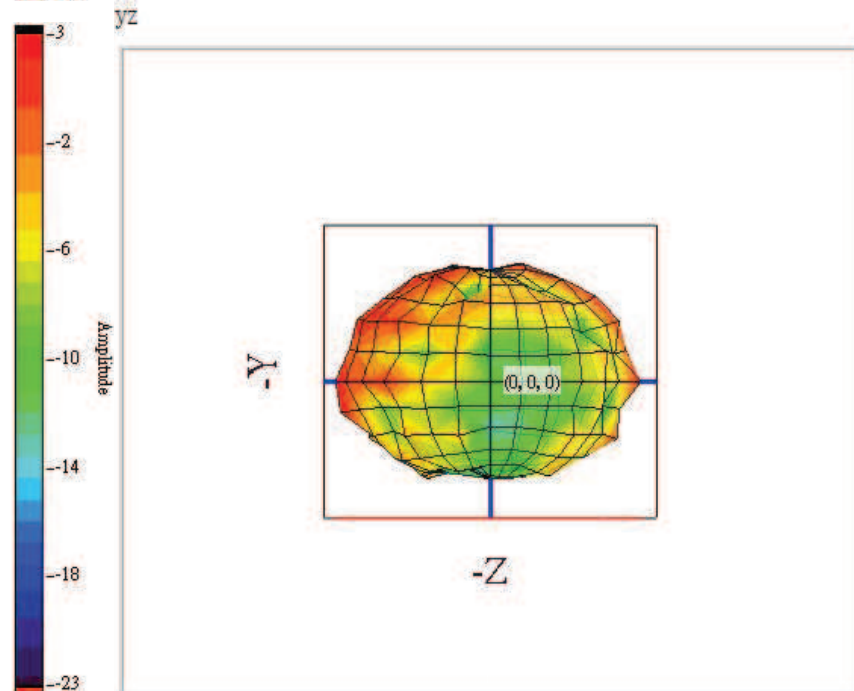
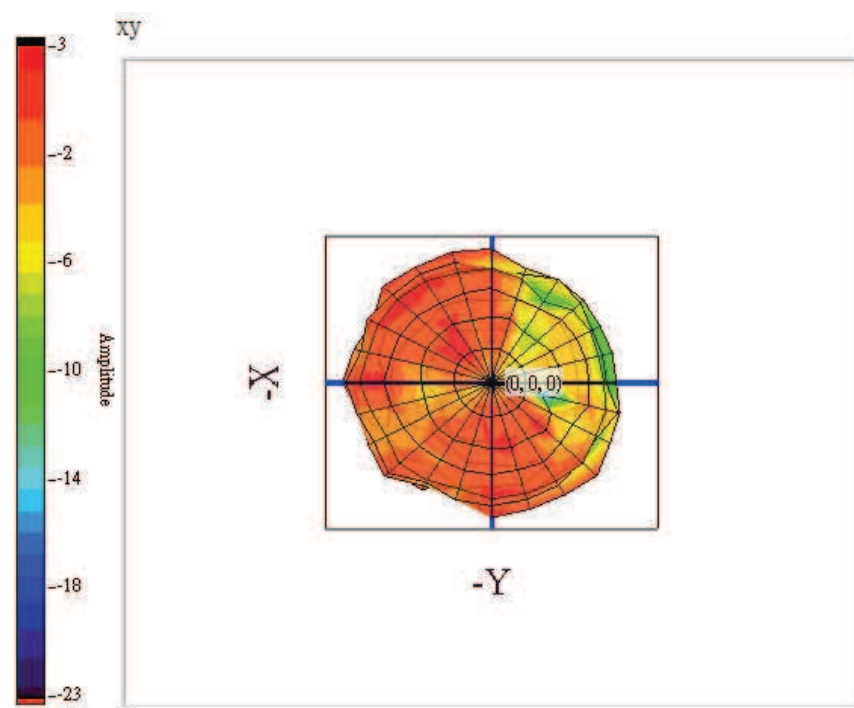
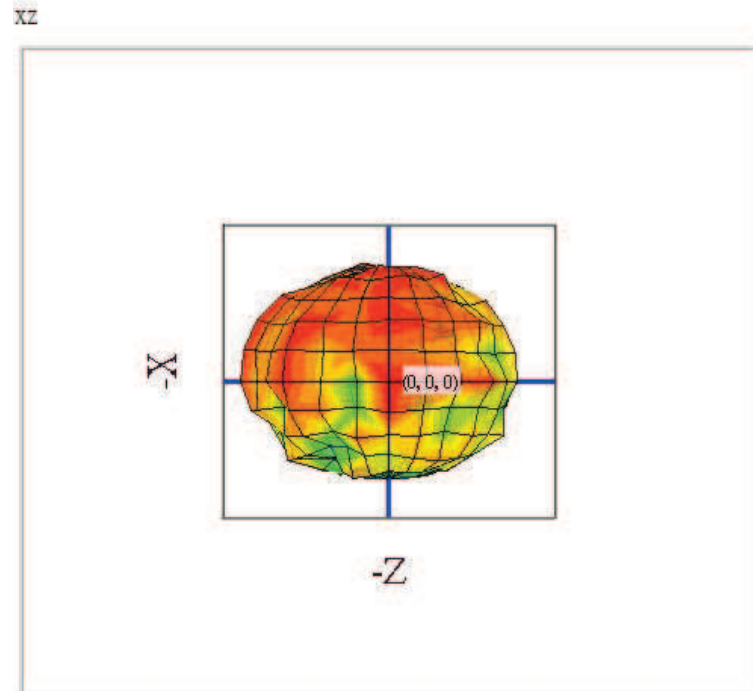
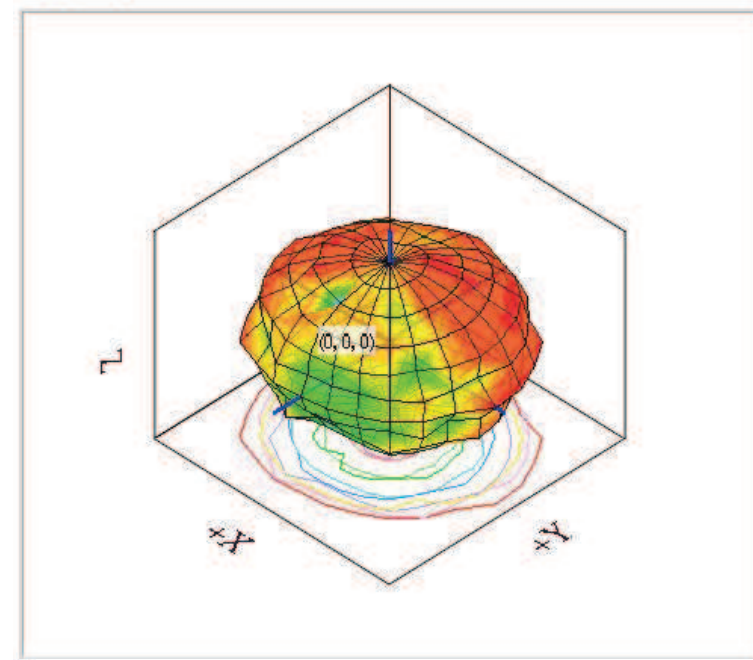
userdefine



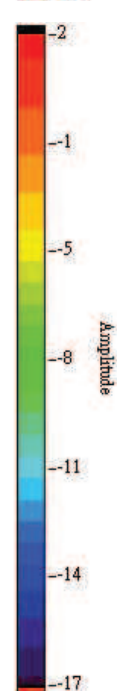
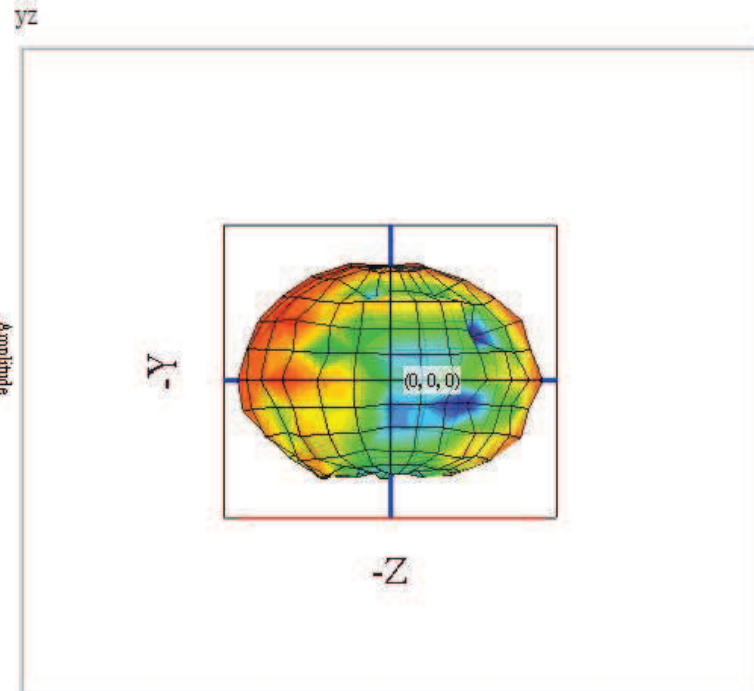
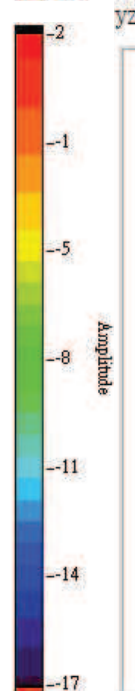
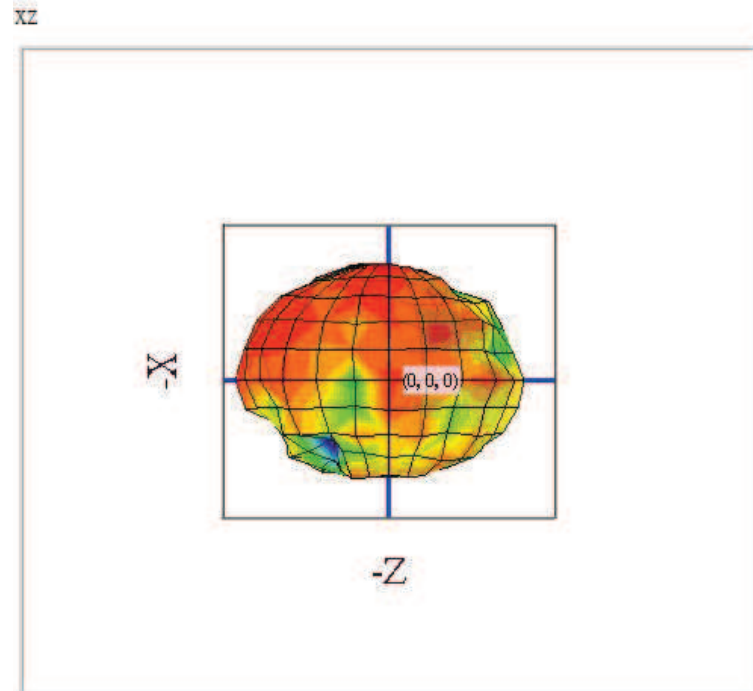
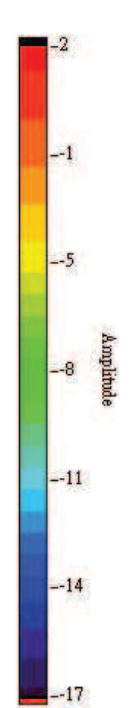
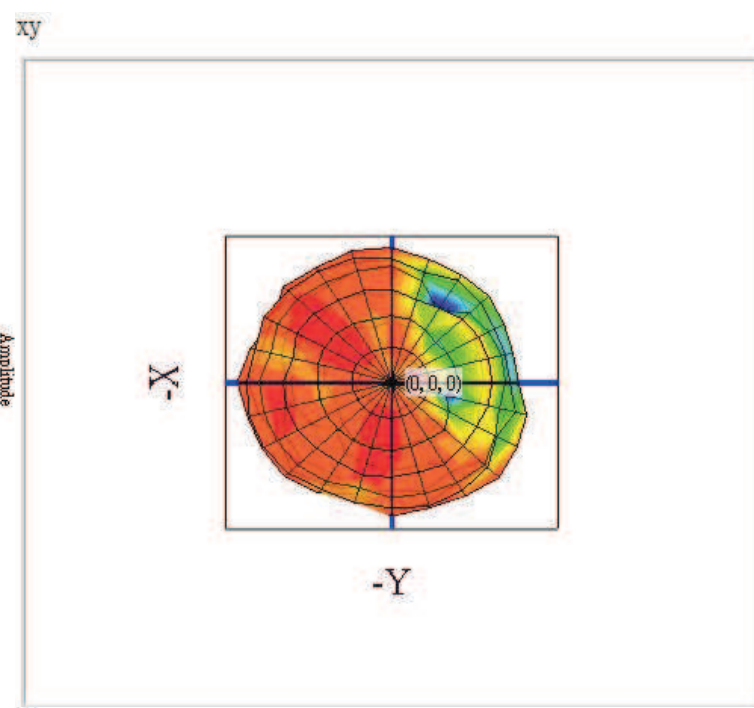
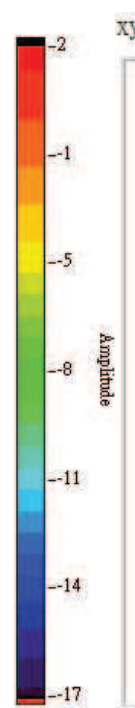
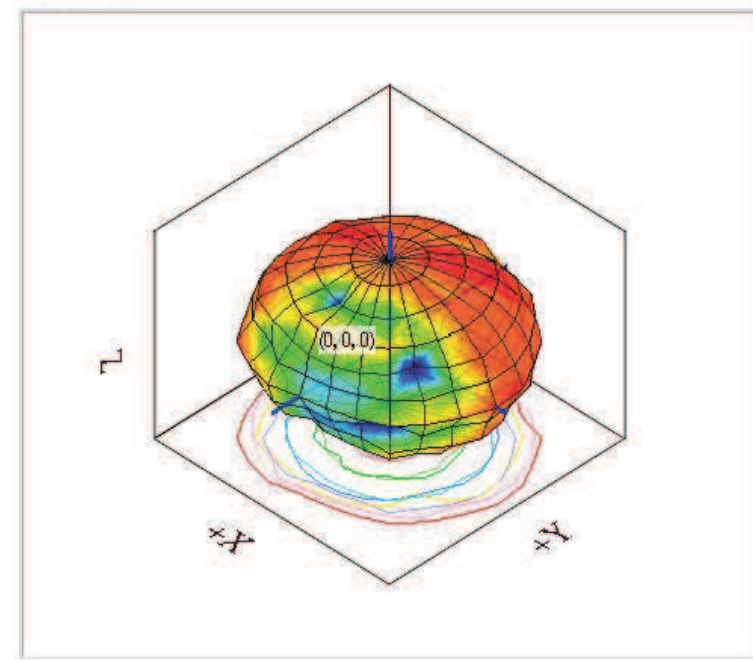
userdefine



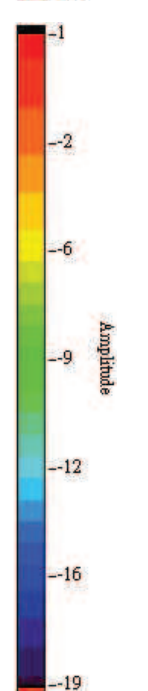
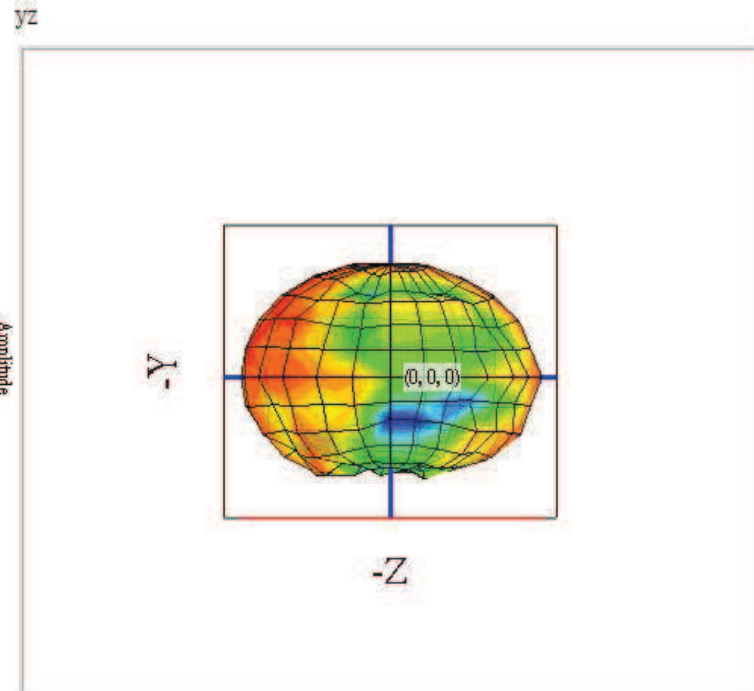
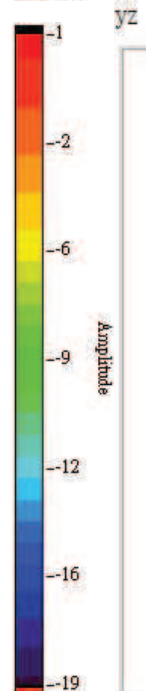
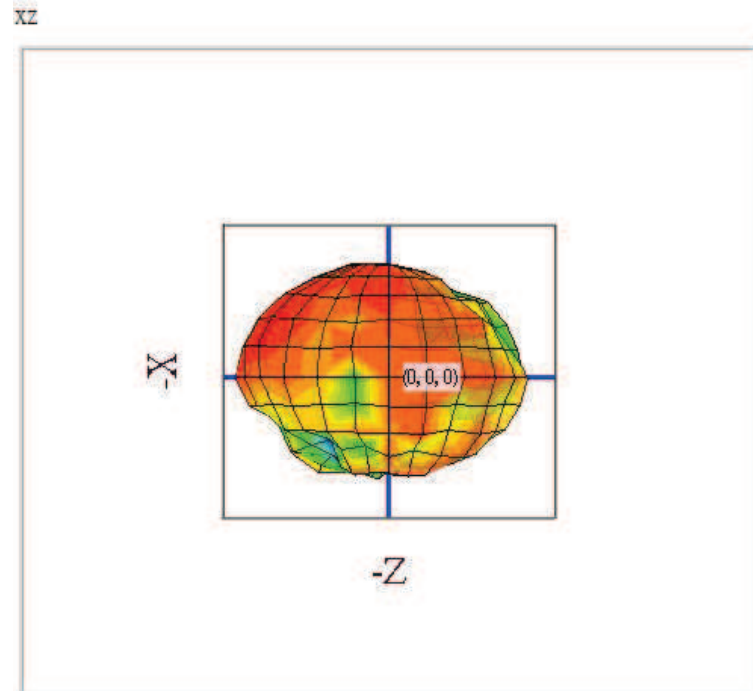
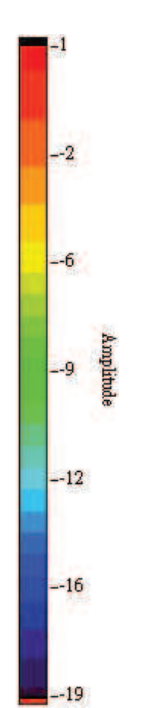
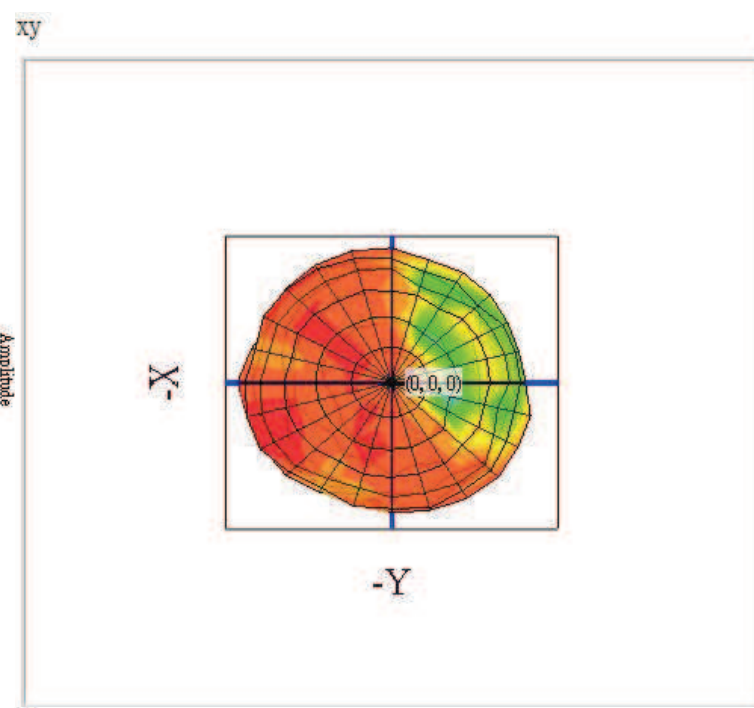
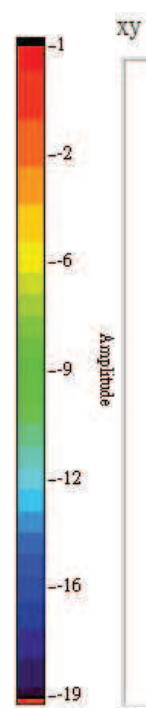
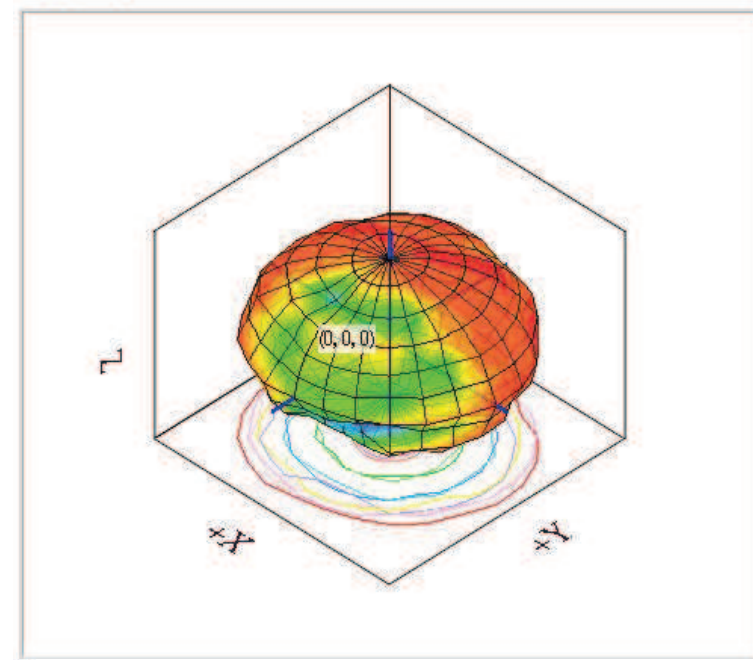
userdefine



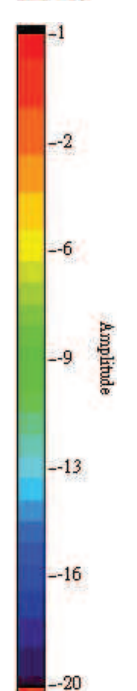
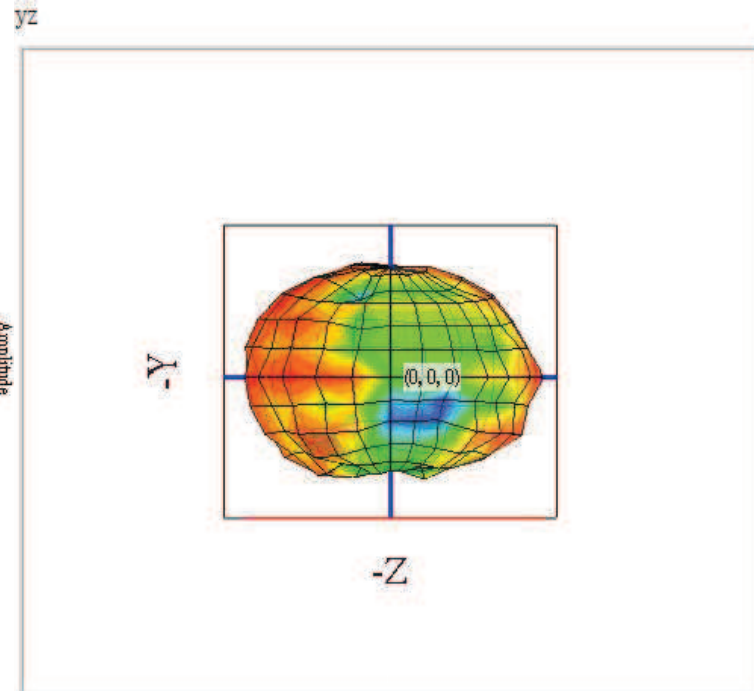
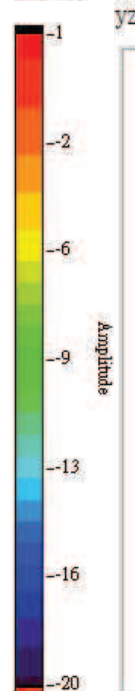
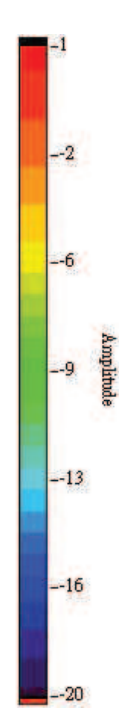
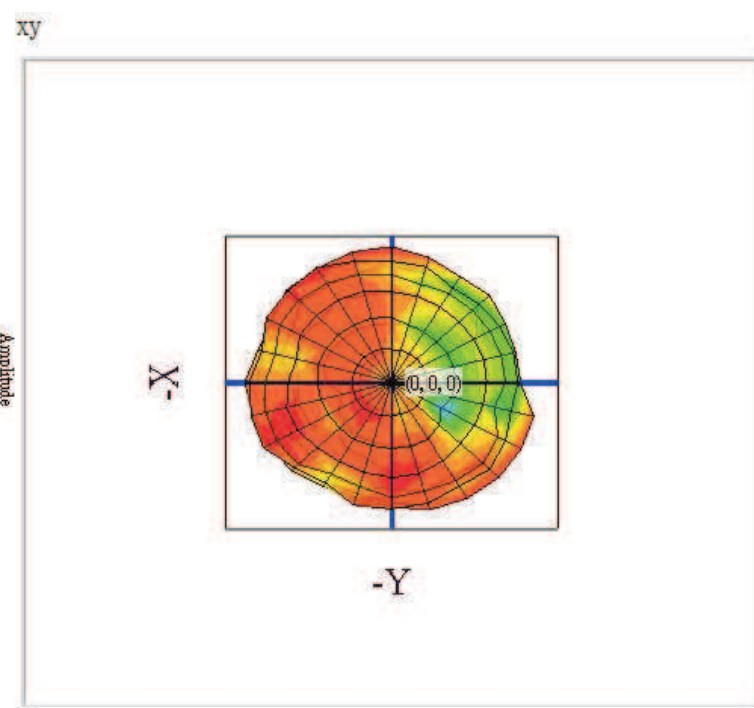
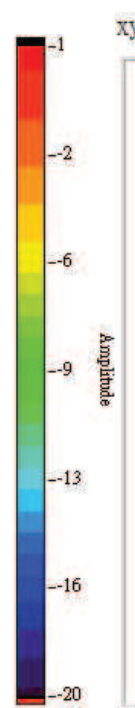
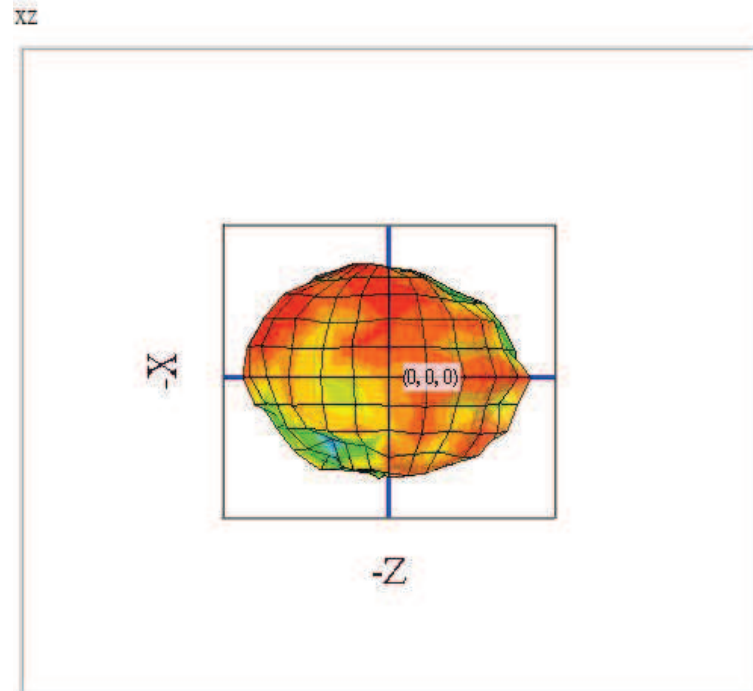
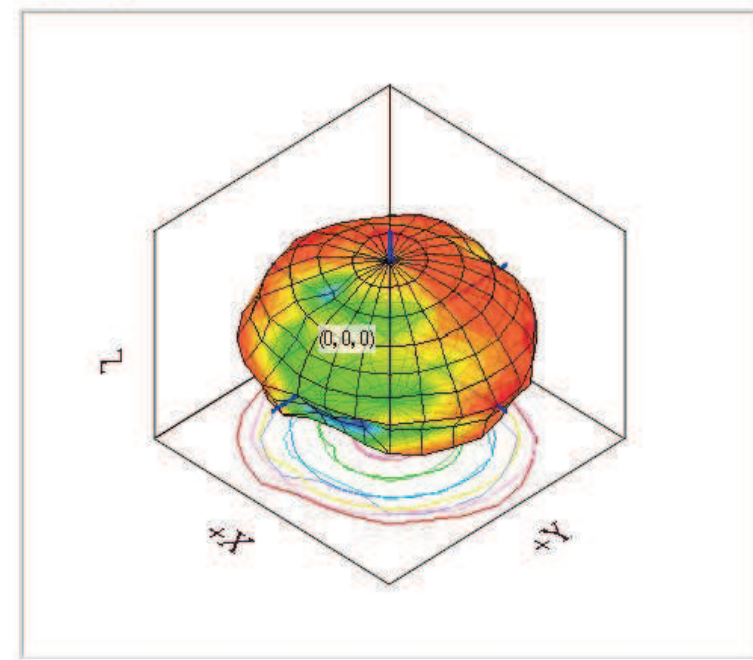
userdefine



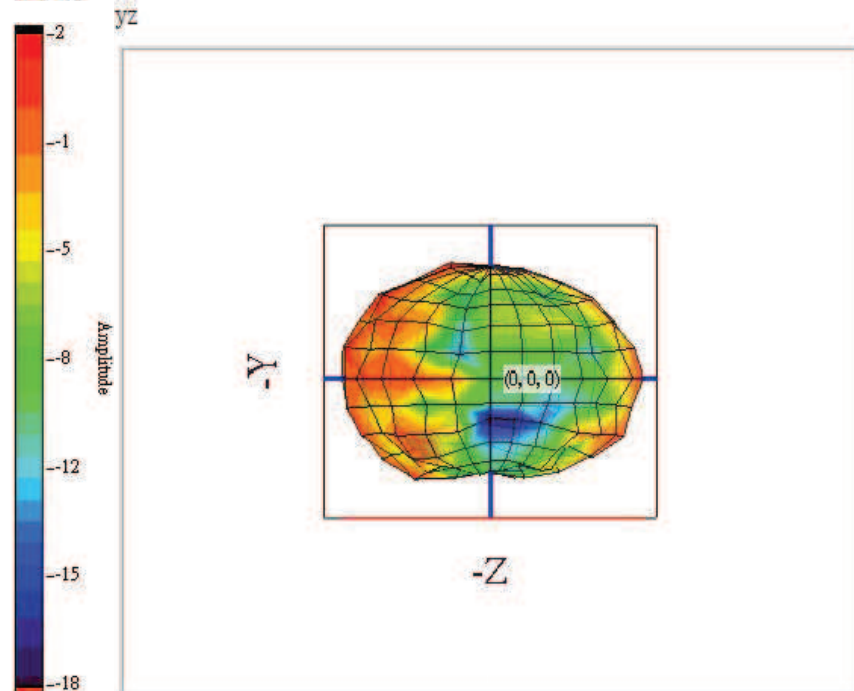
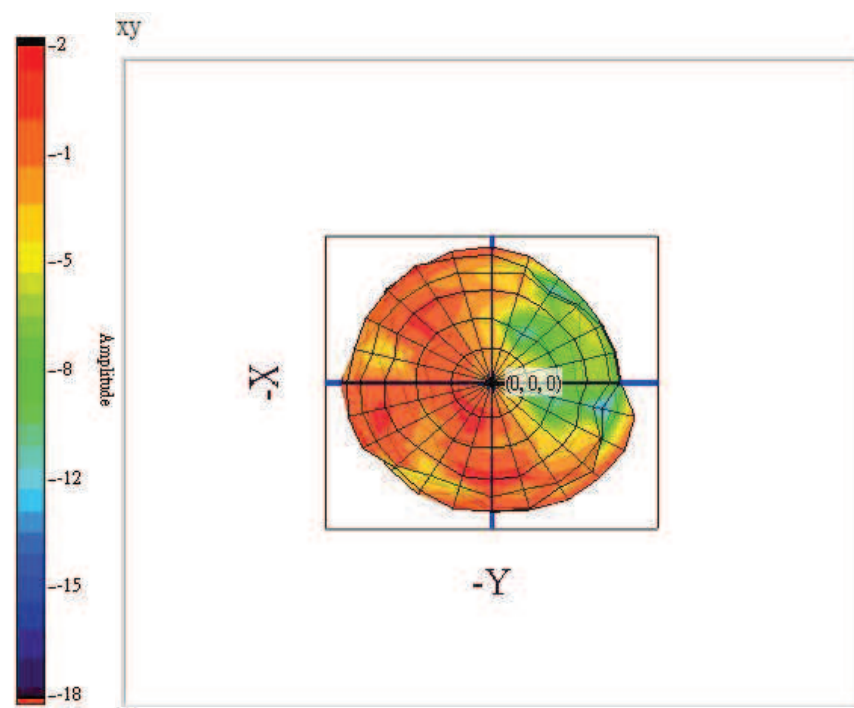
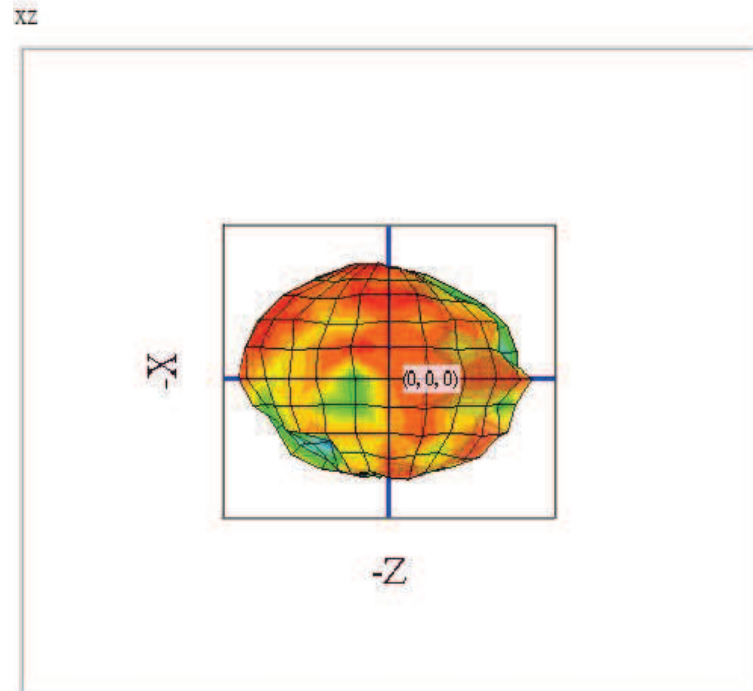
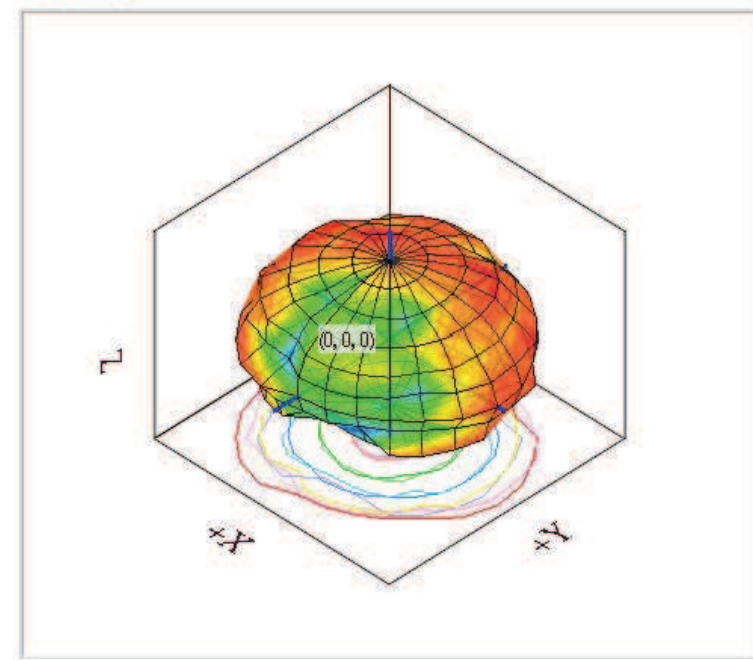
userdefine



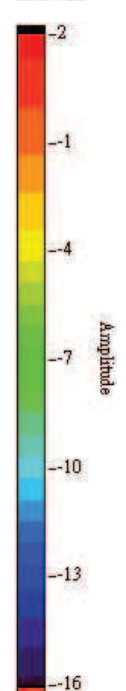
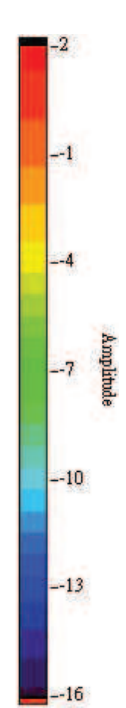
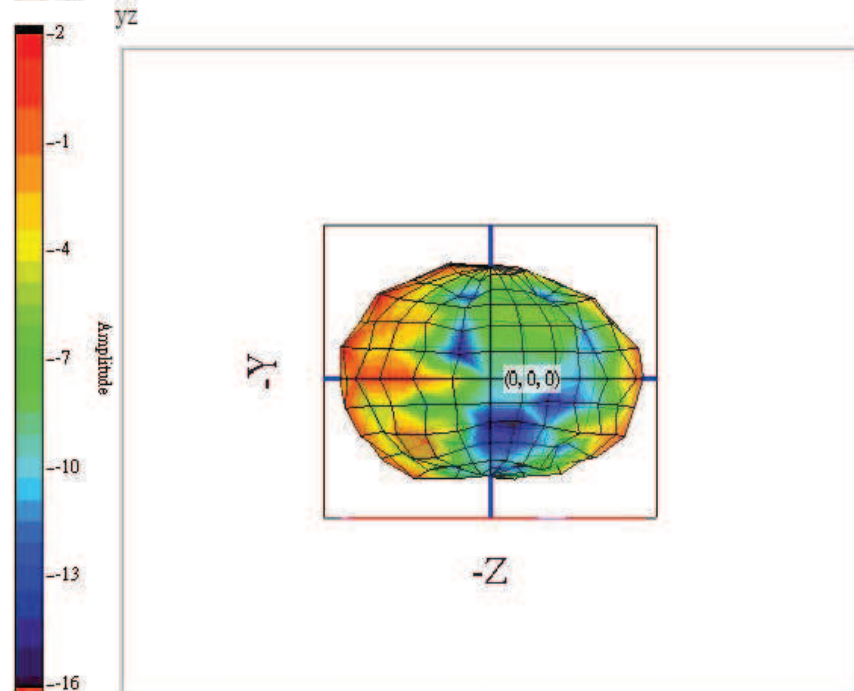
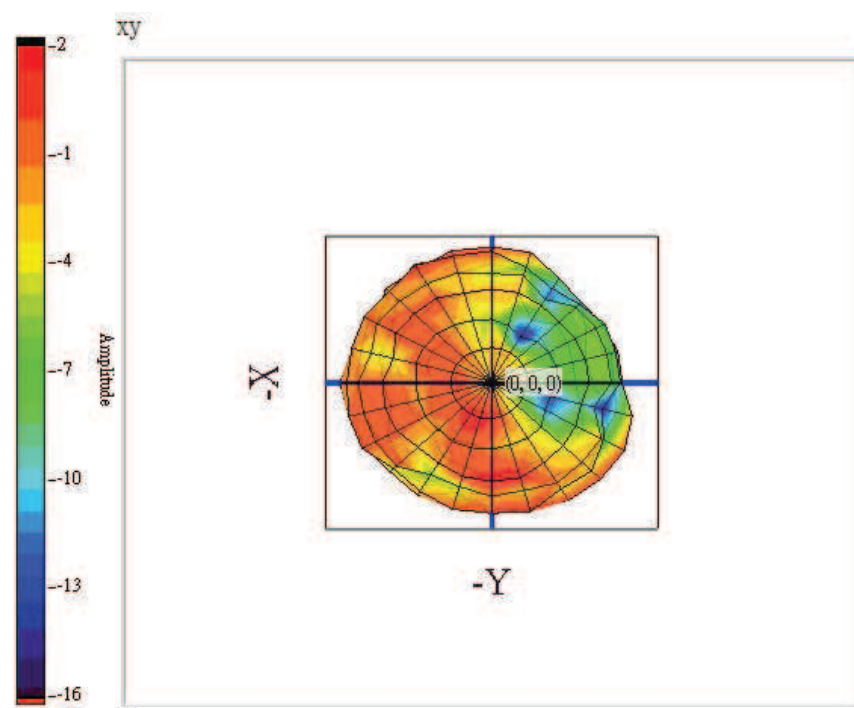
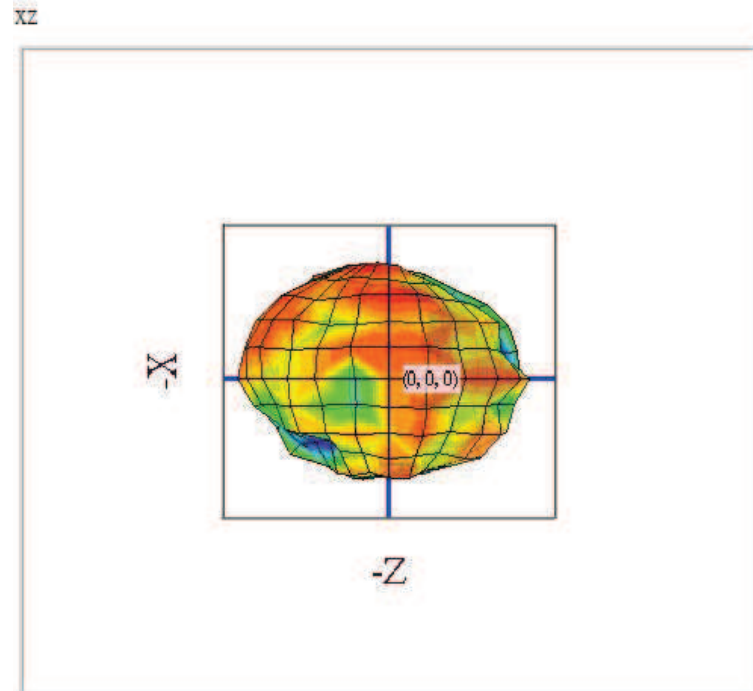
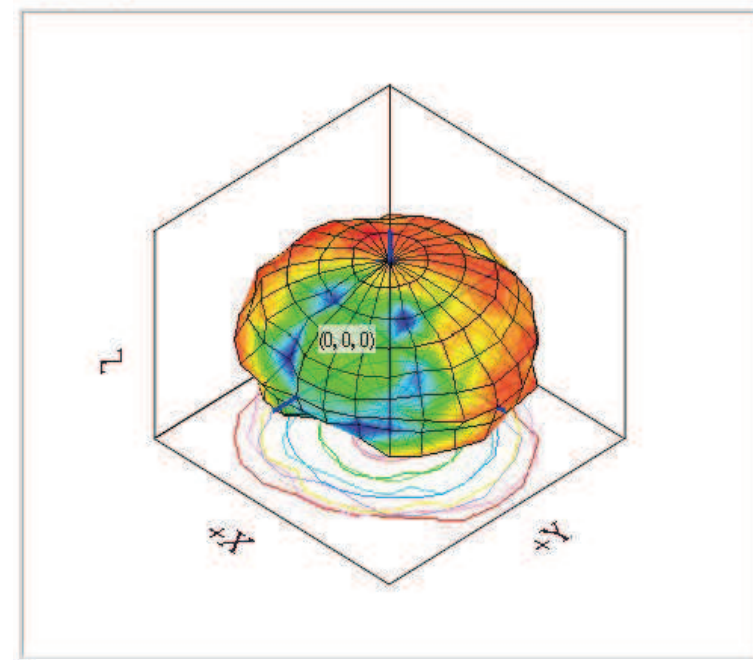
userdefine



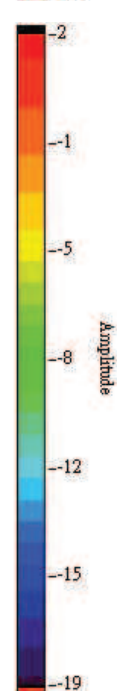
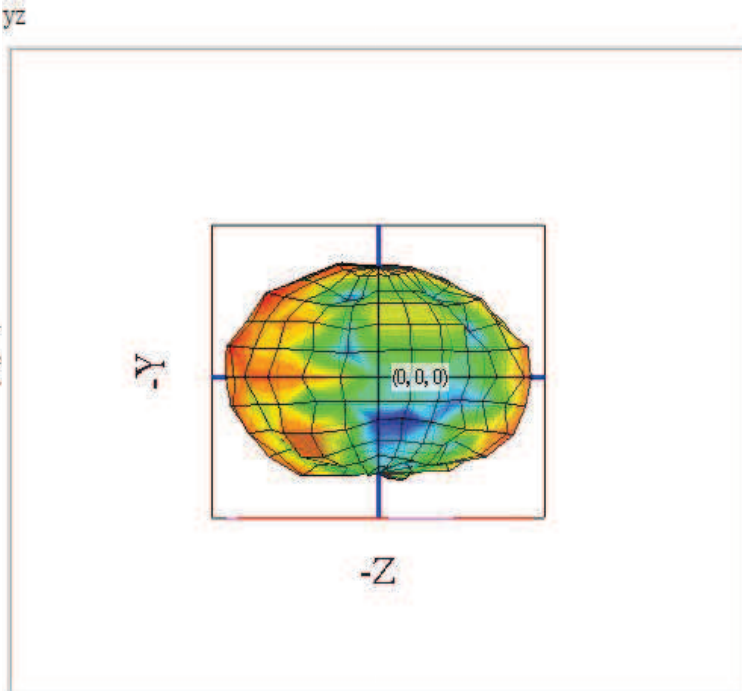
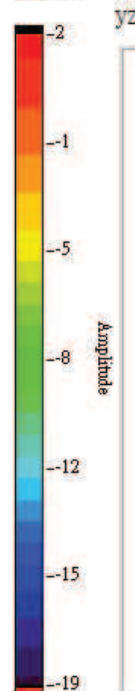
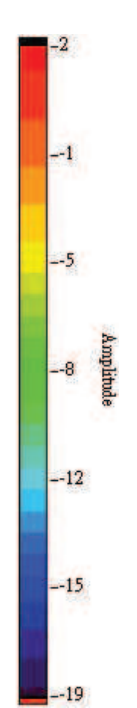
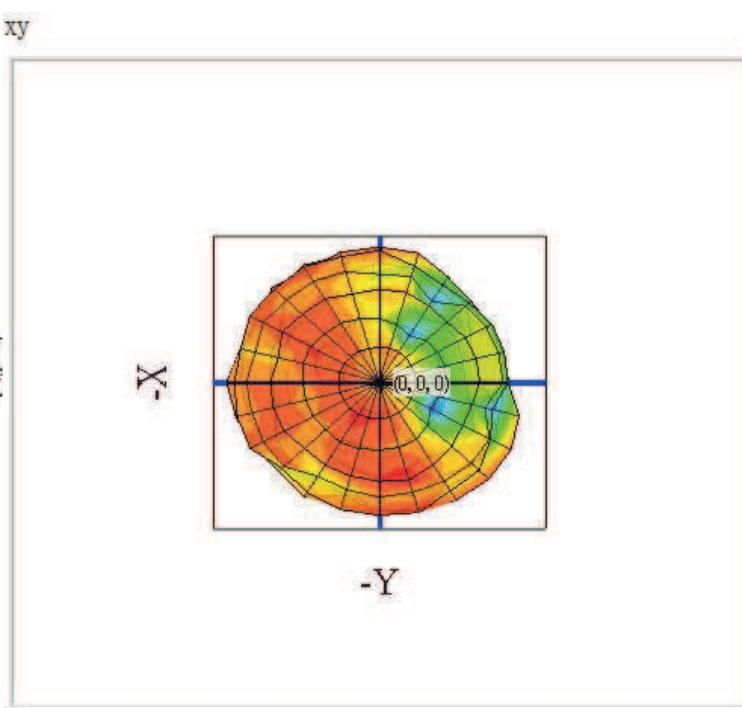
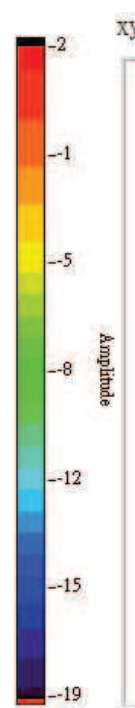
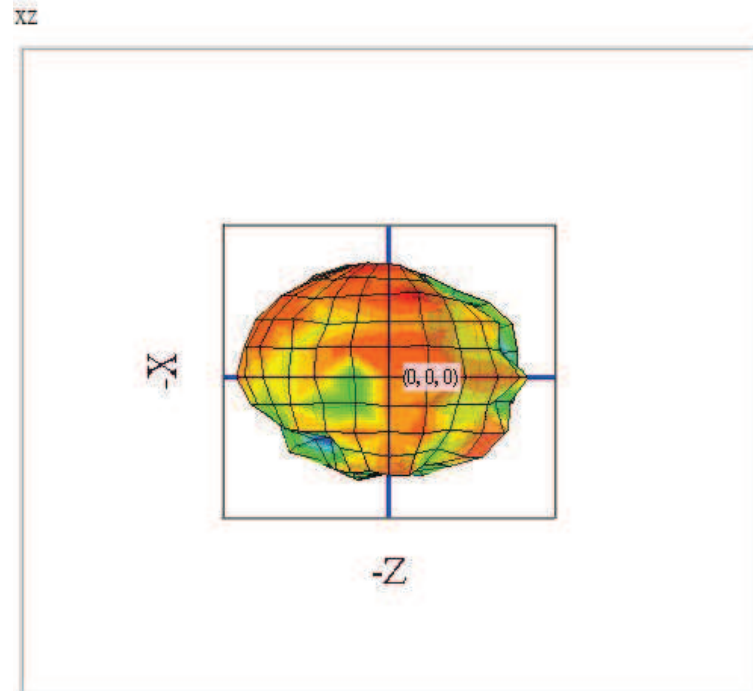
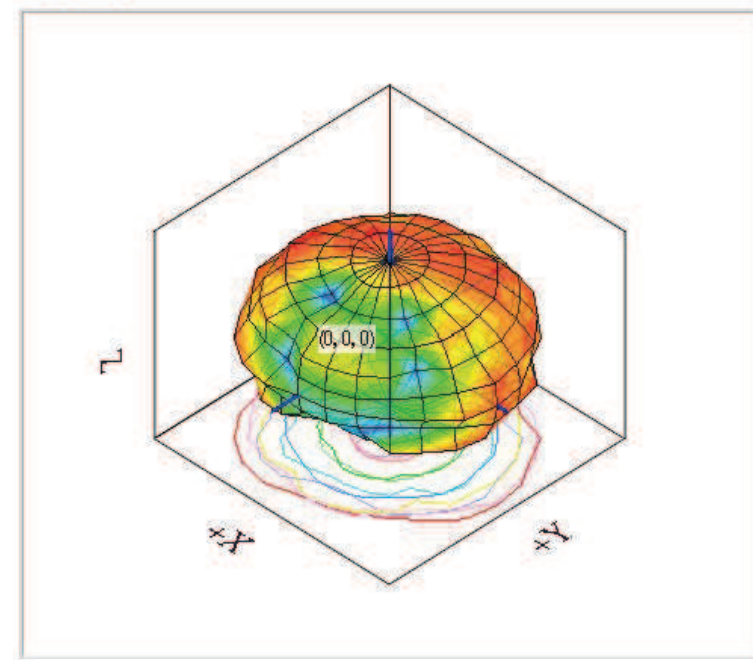
userdefine

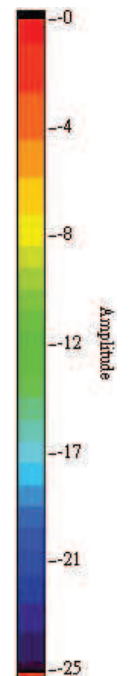
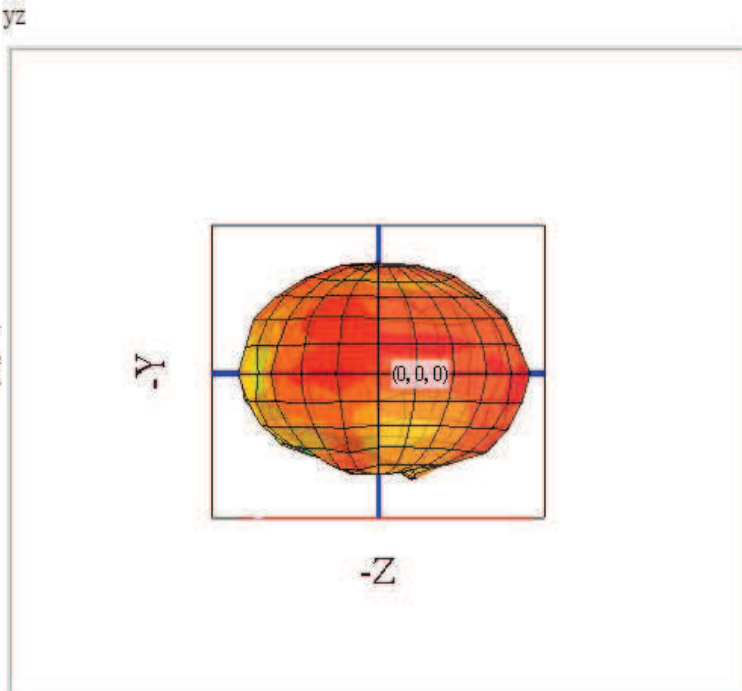
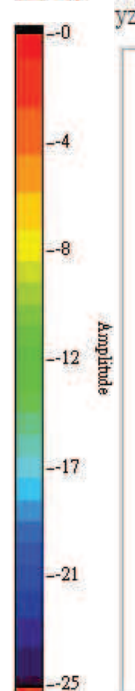
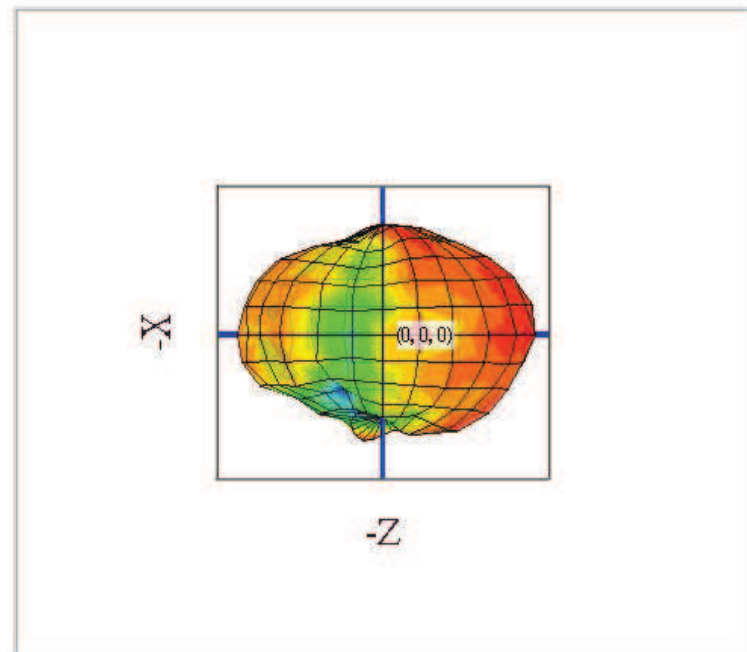
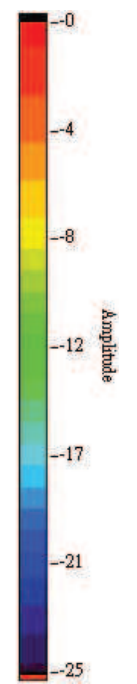
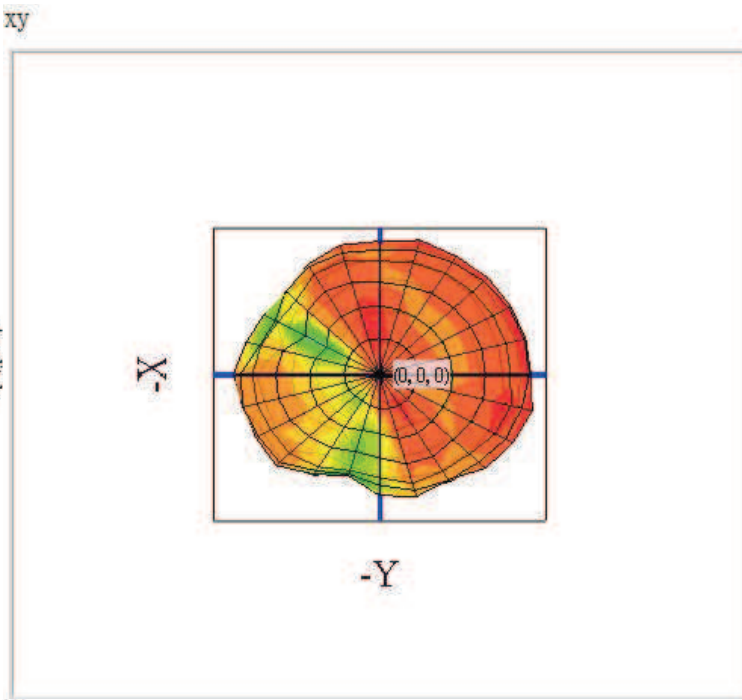
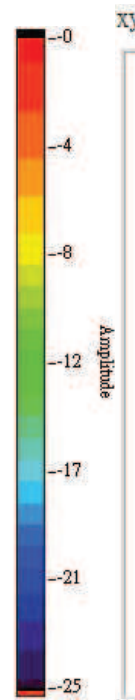
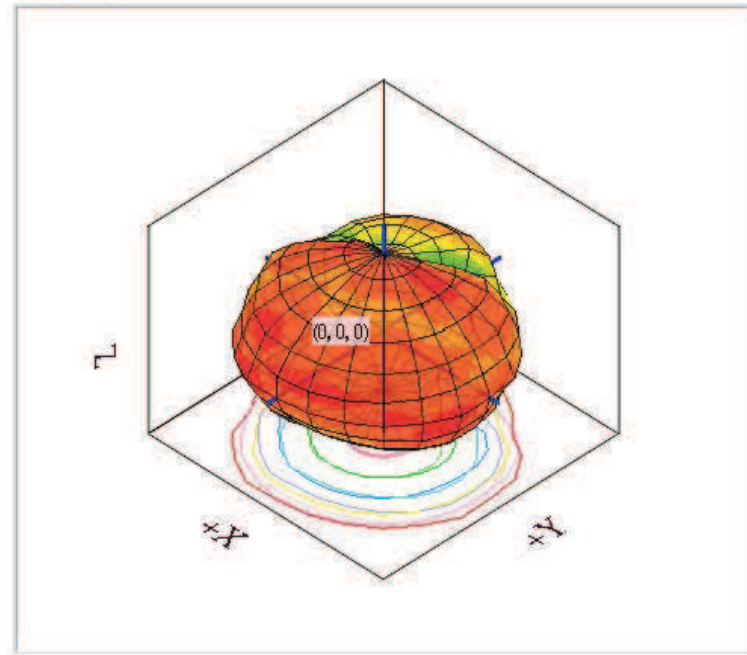


userdefine

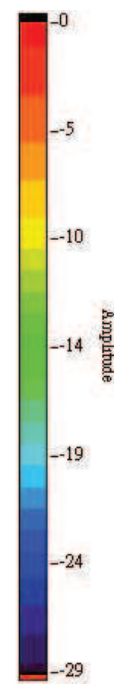
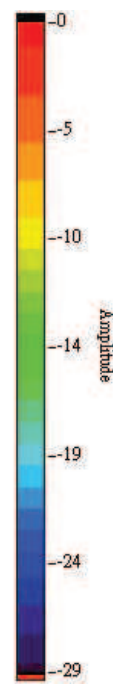
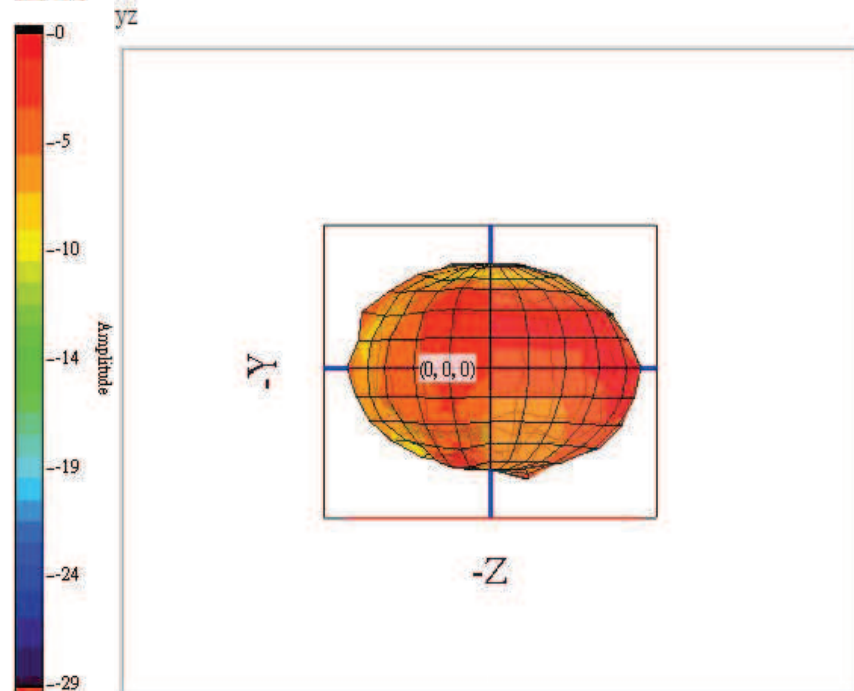
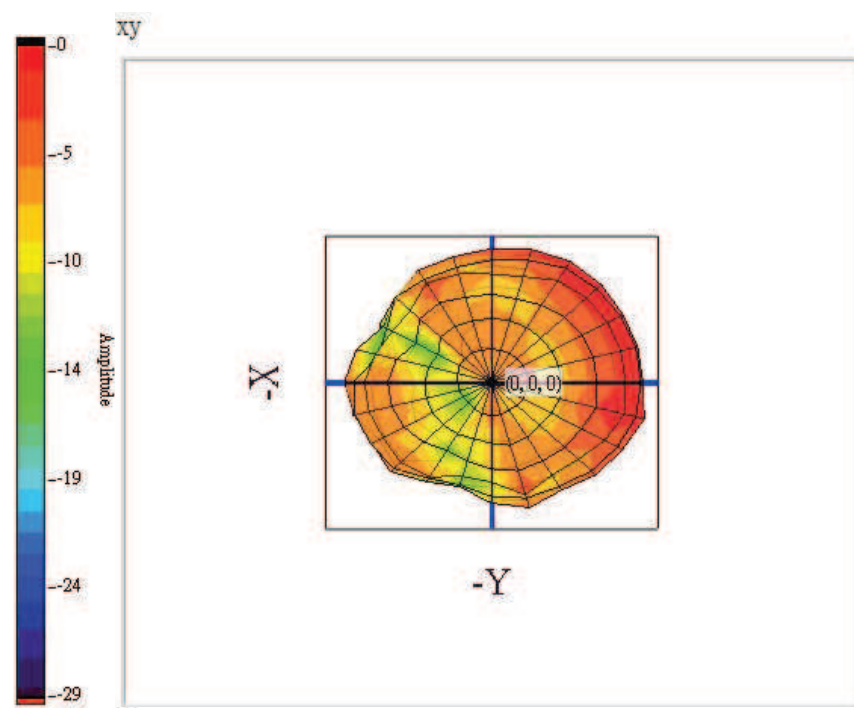
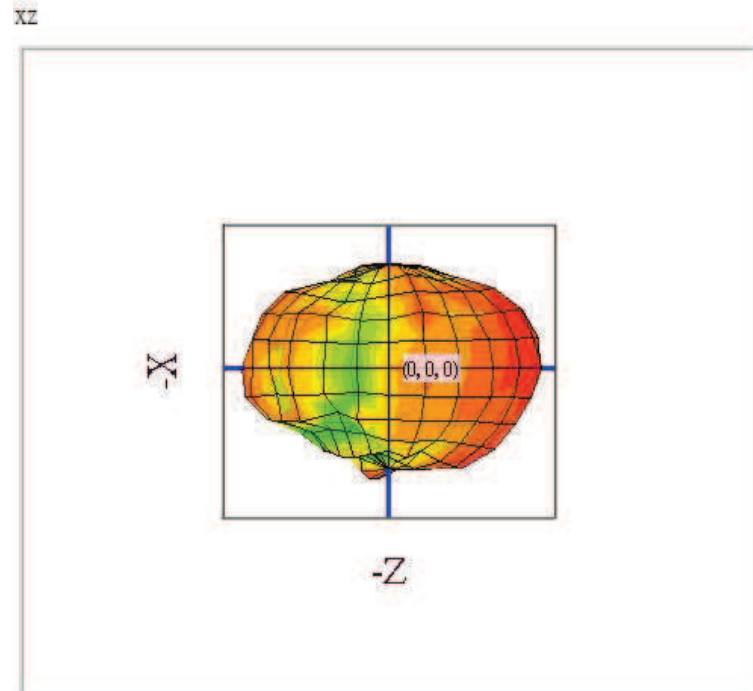
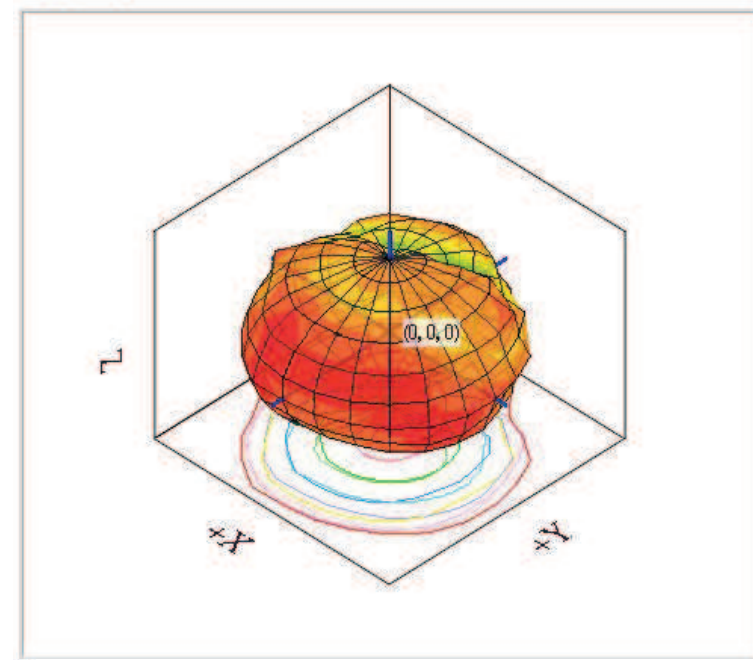


userdefine

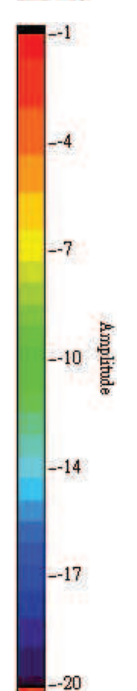
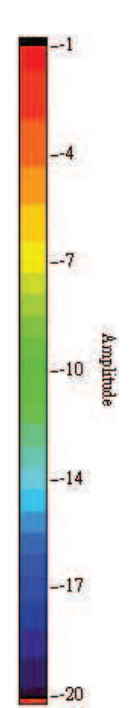
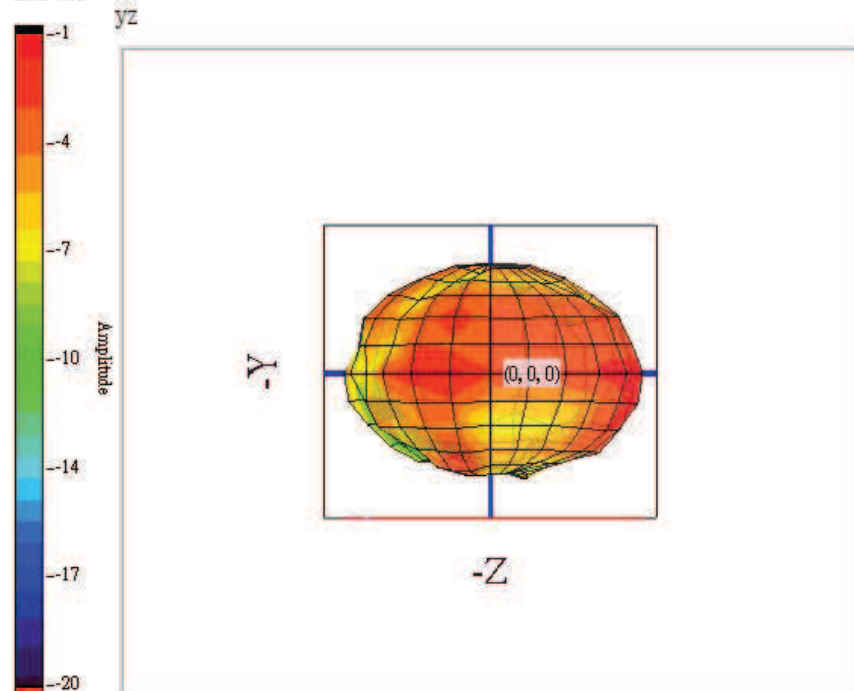
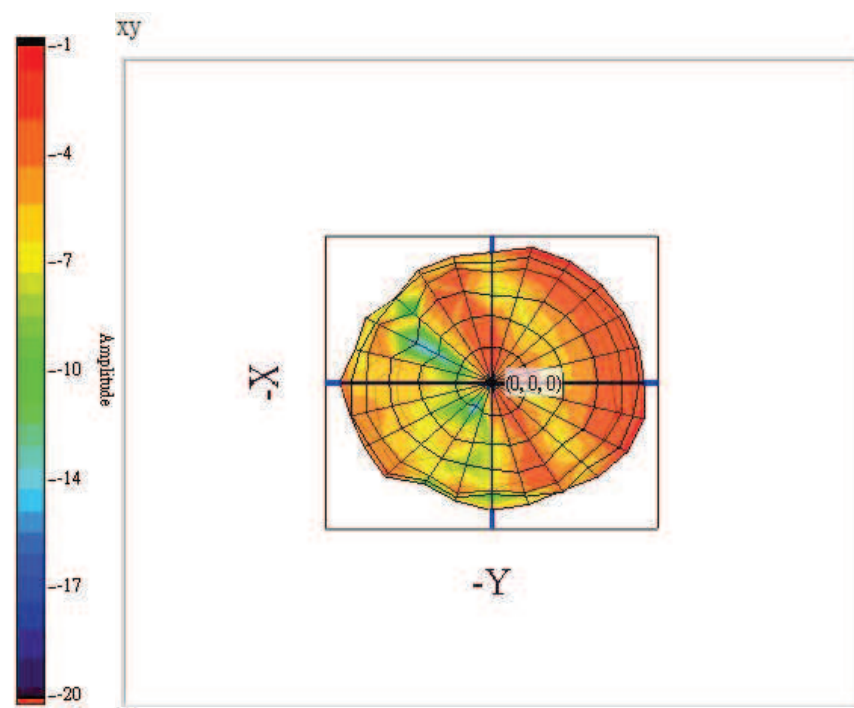
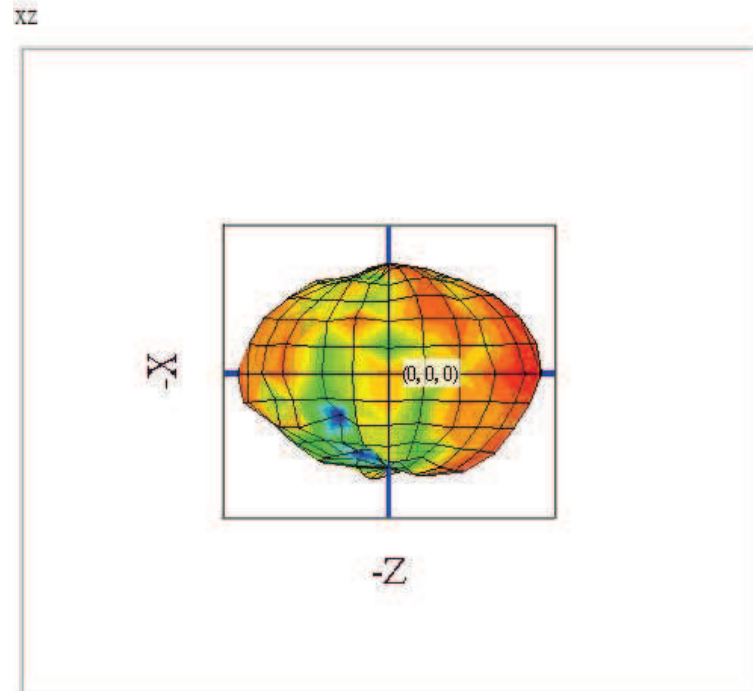
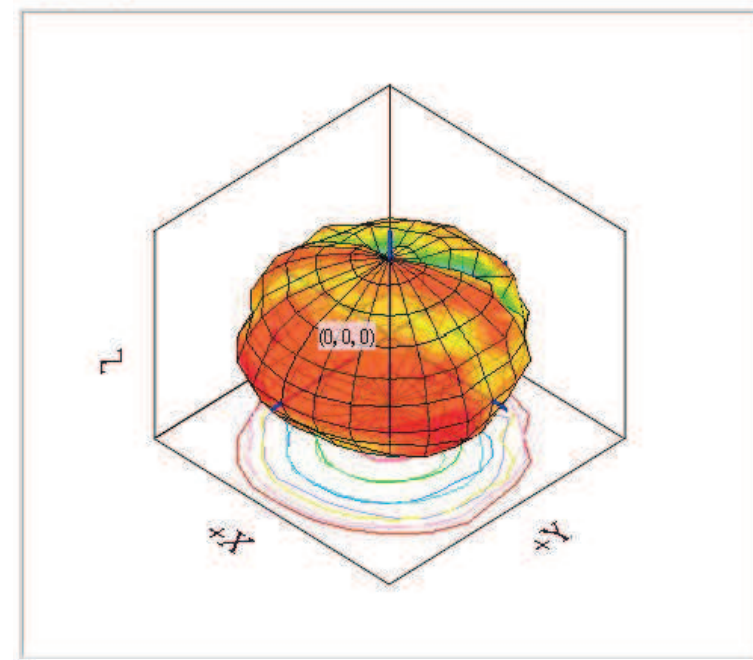




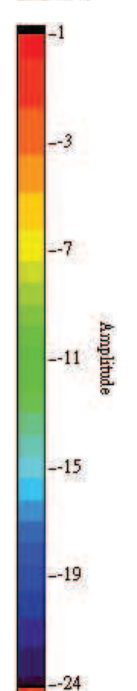
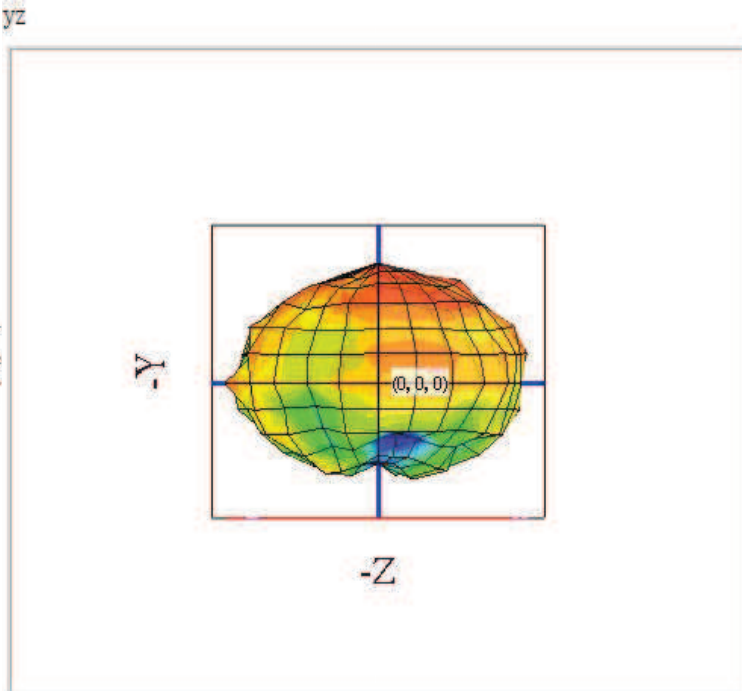
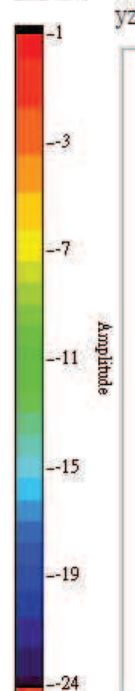
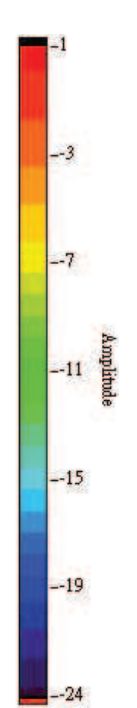
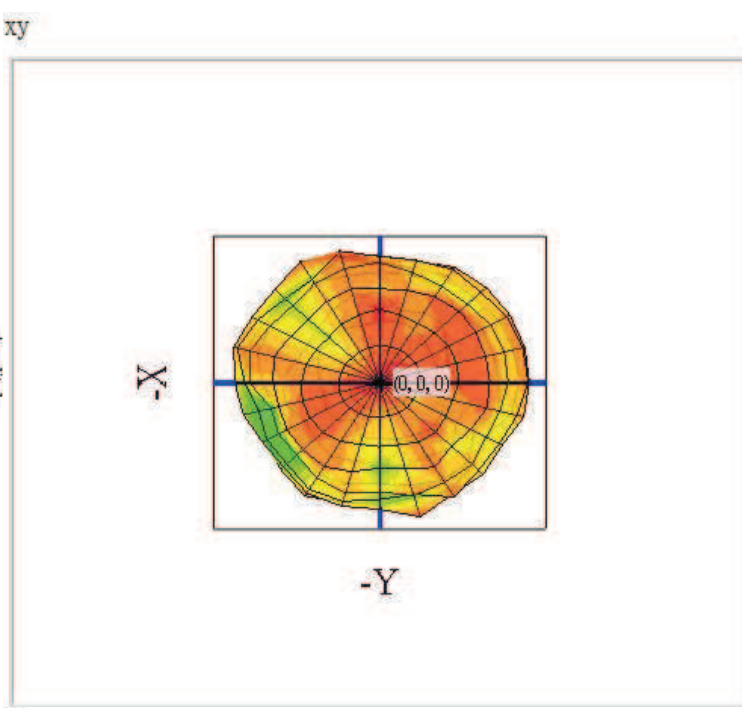
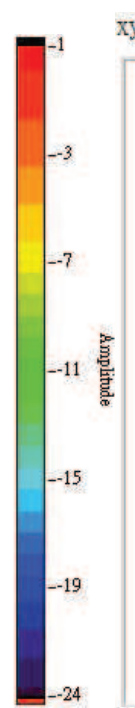
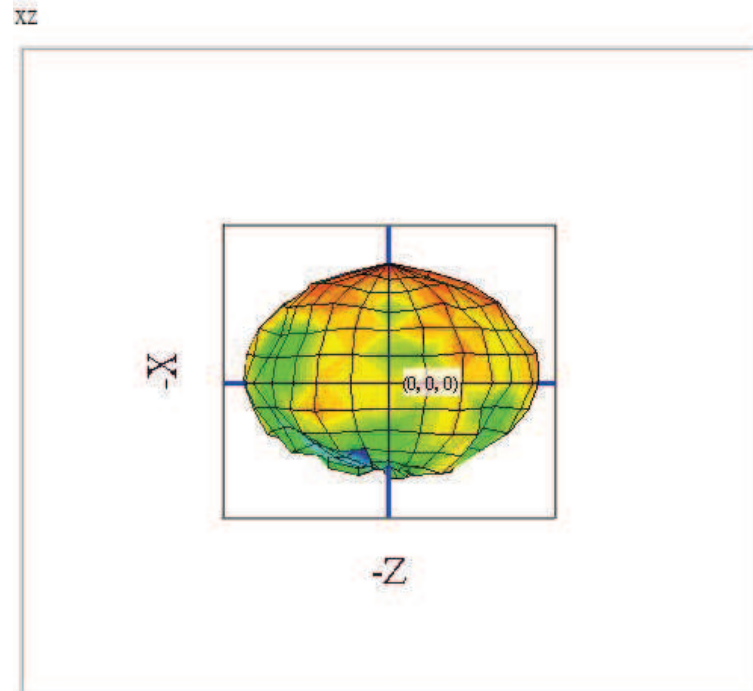
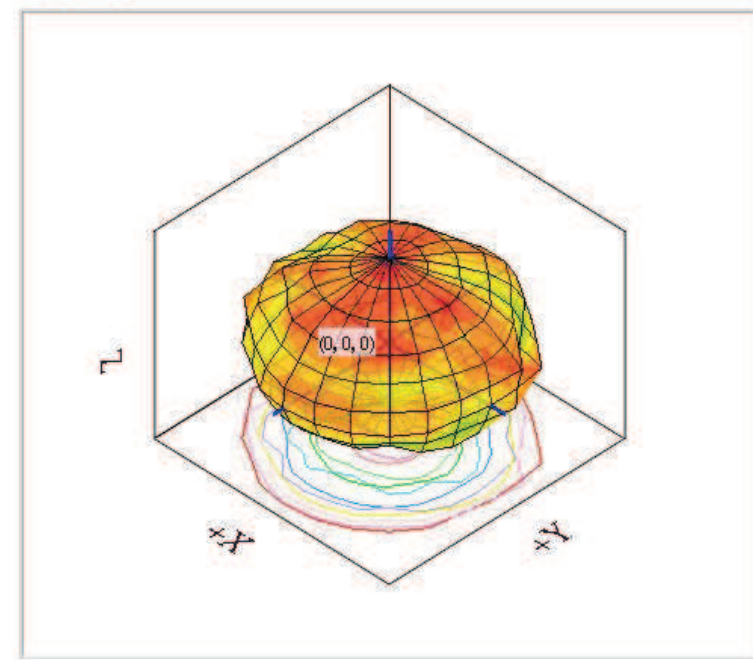
userdefine



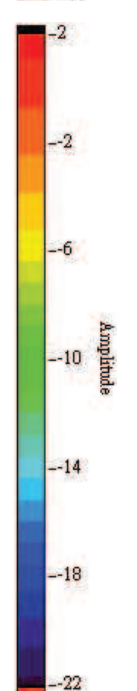
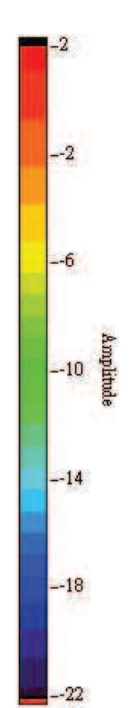
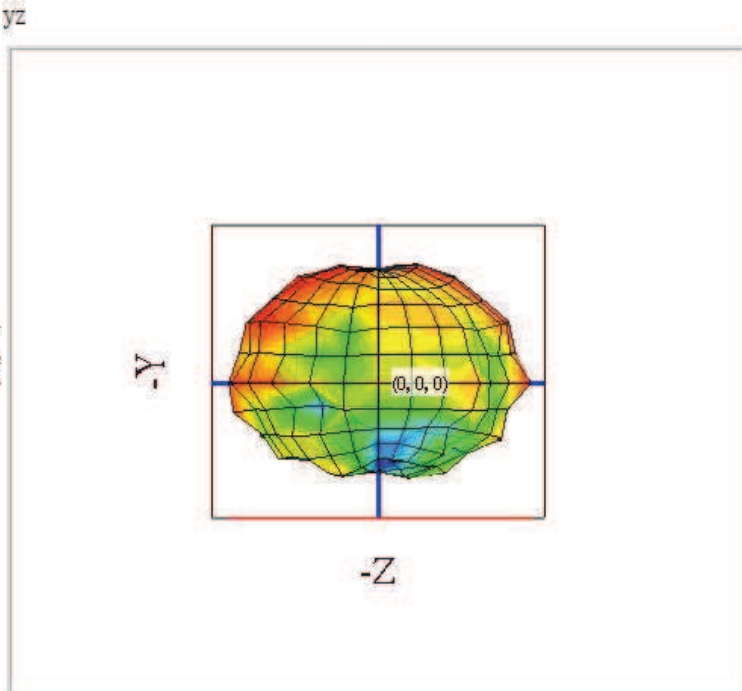
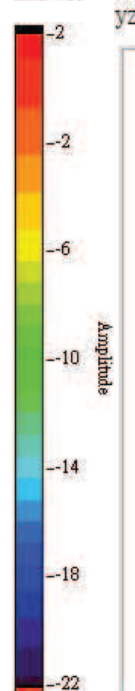
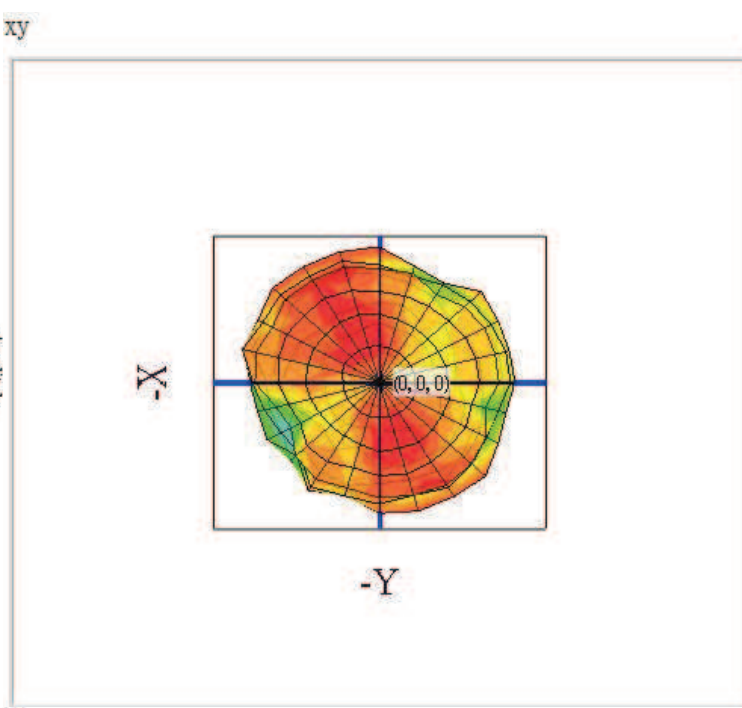
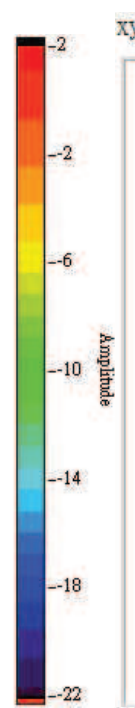
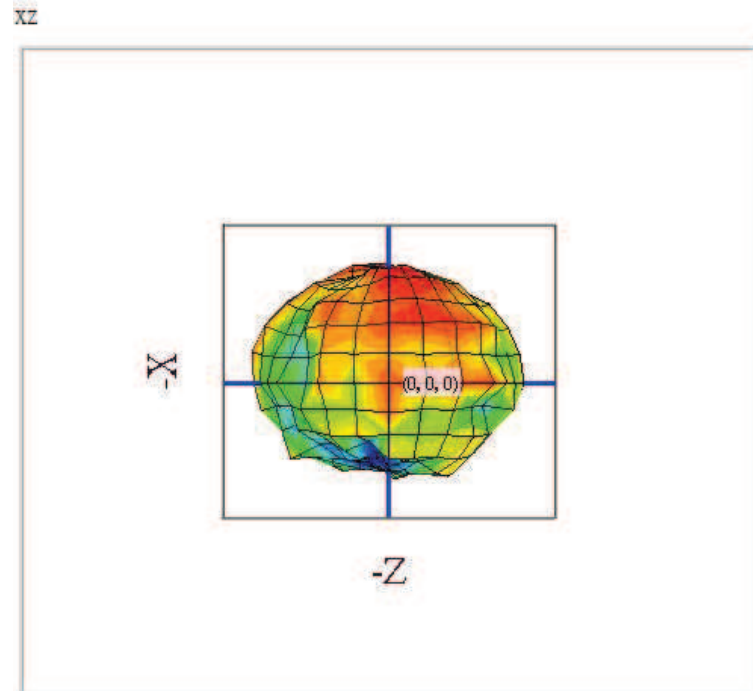
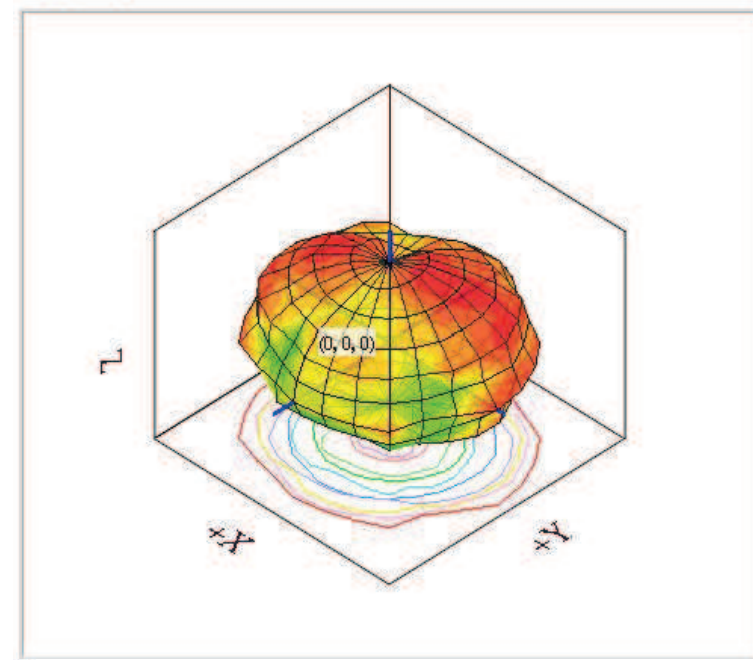
userdefine



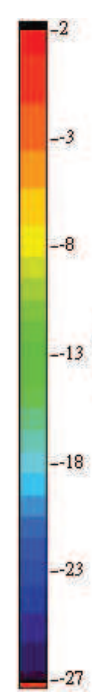
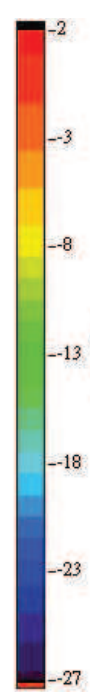
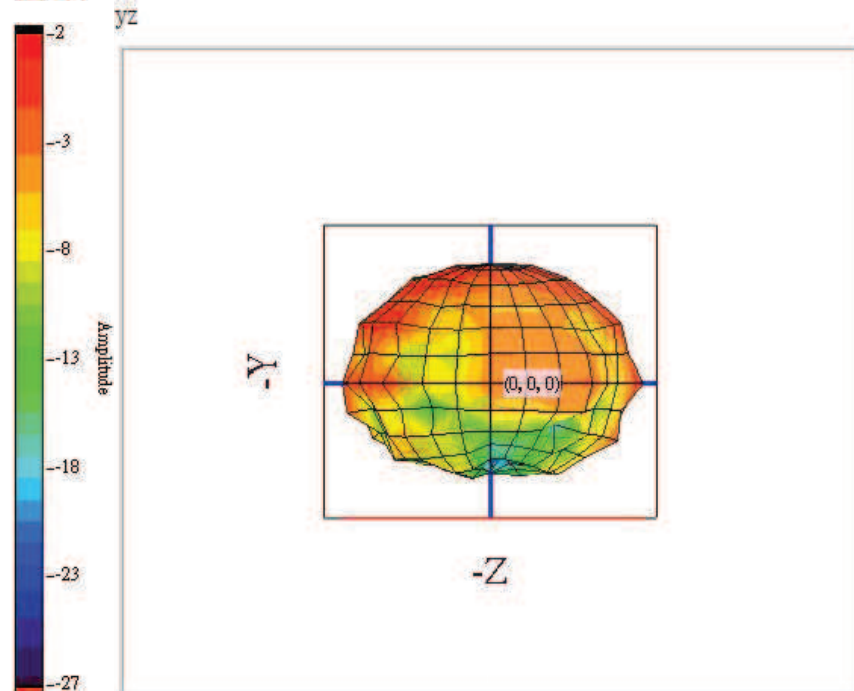
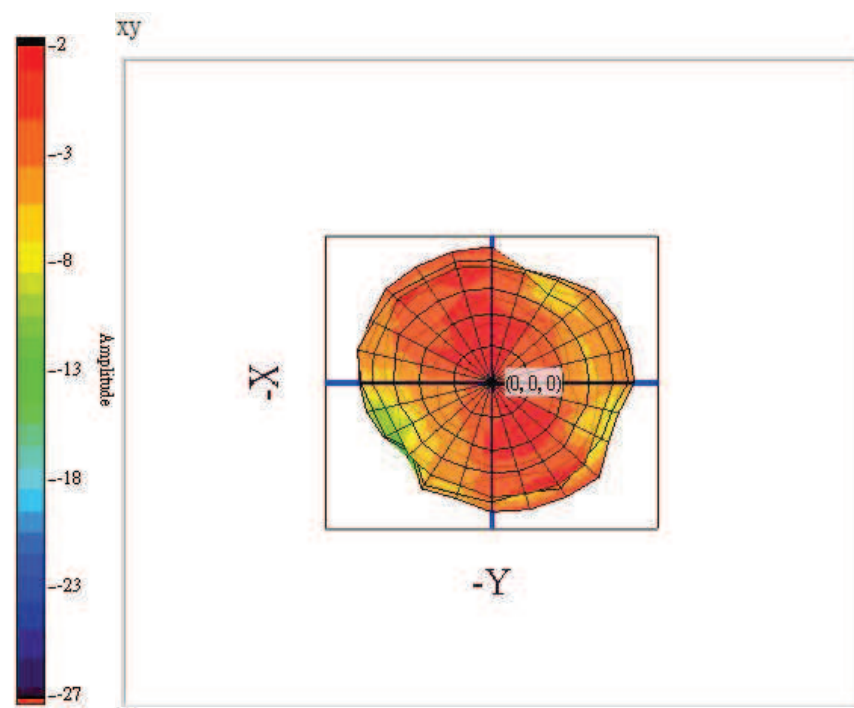
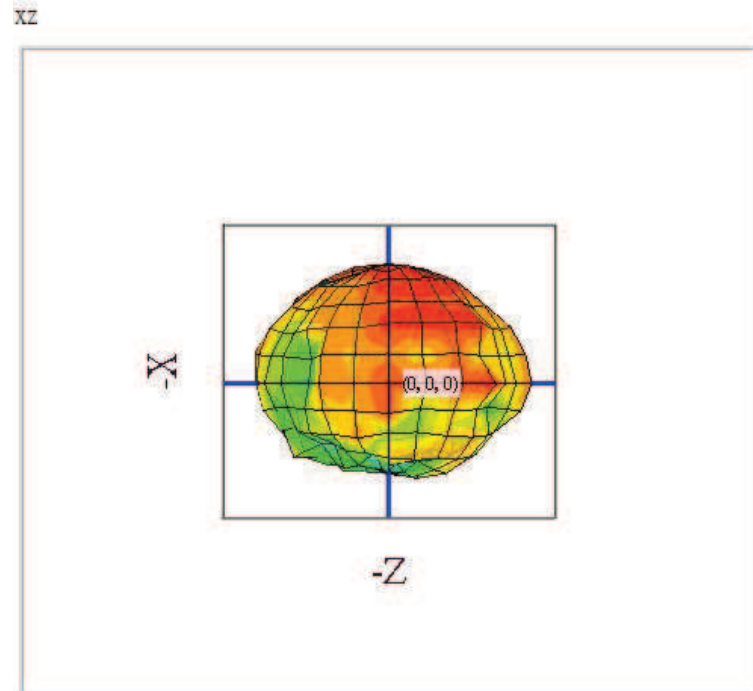
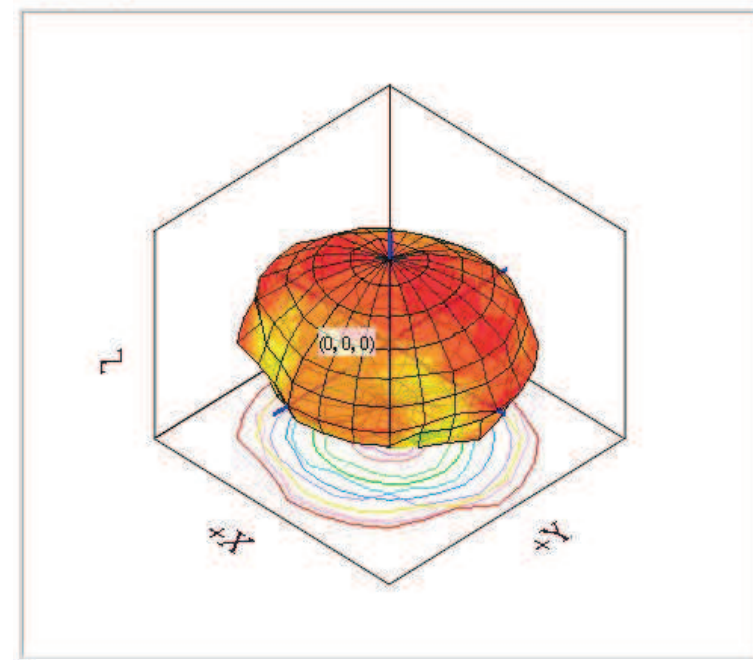
userdefine



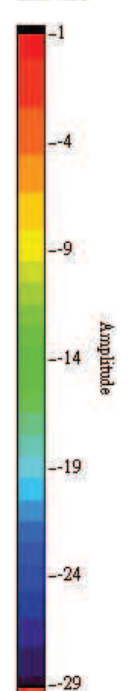
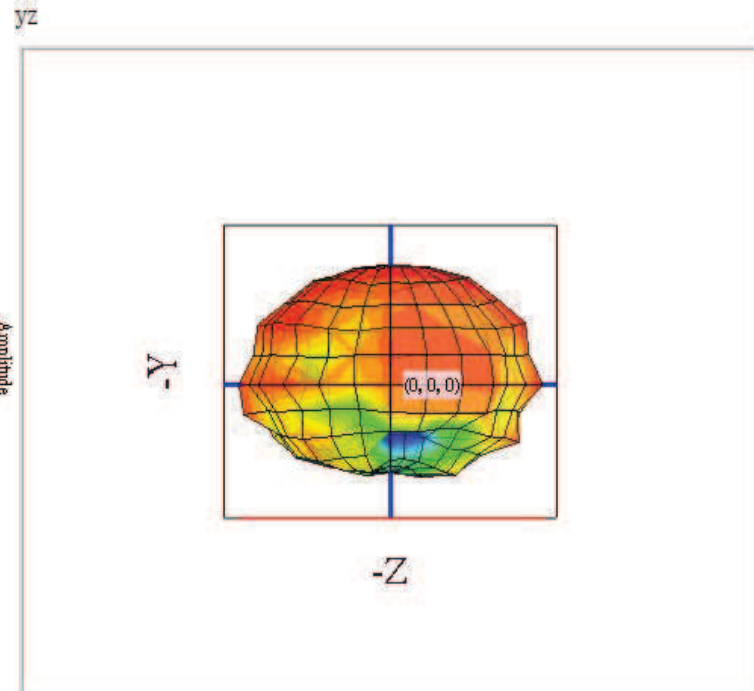
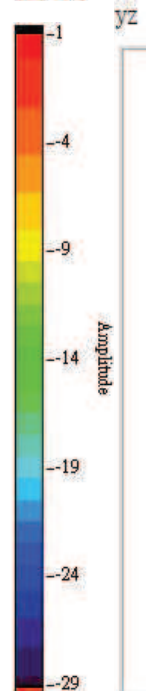
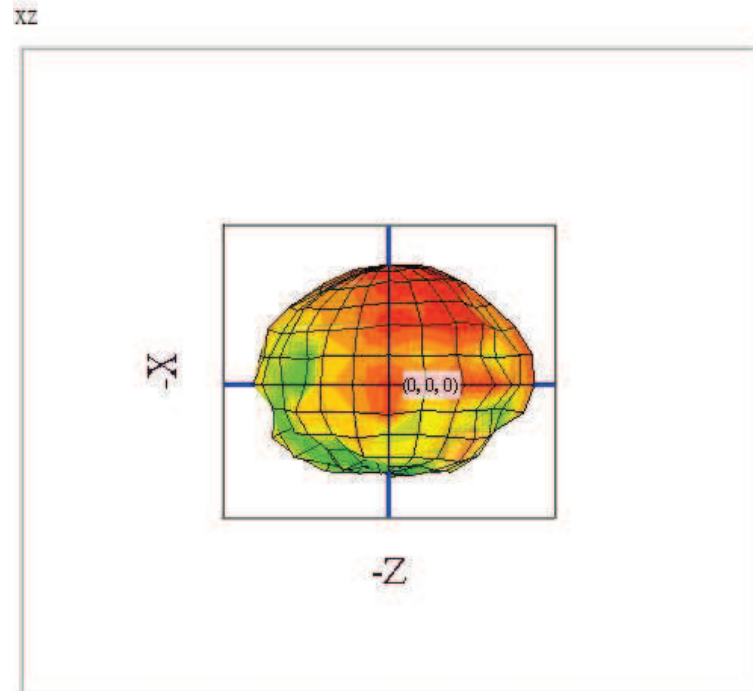
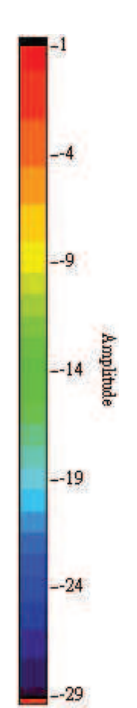
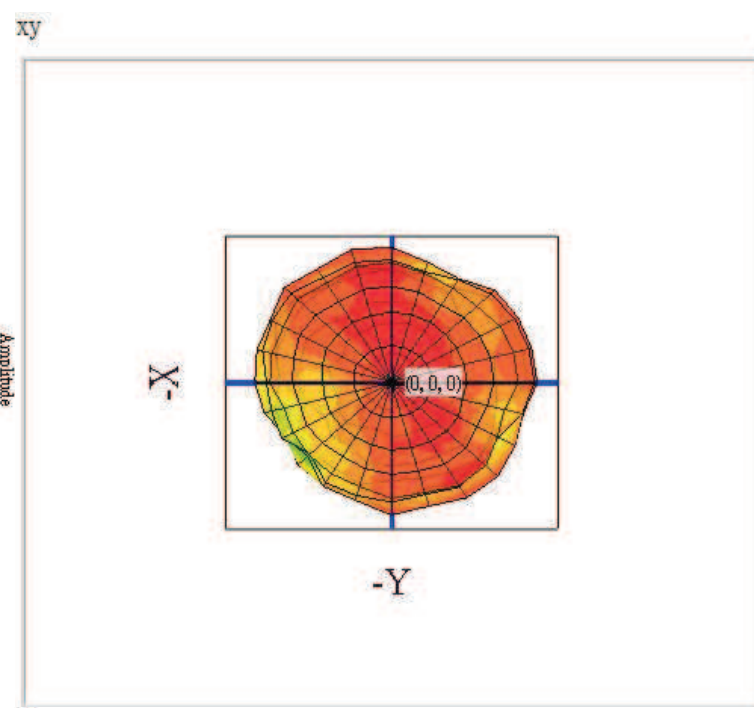
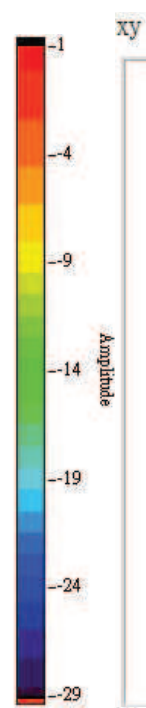
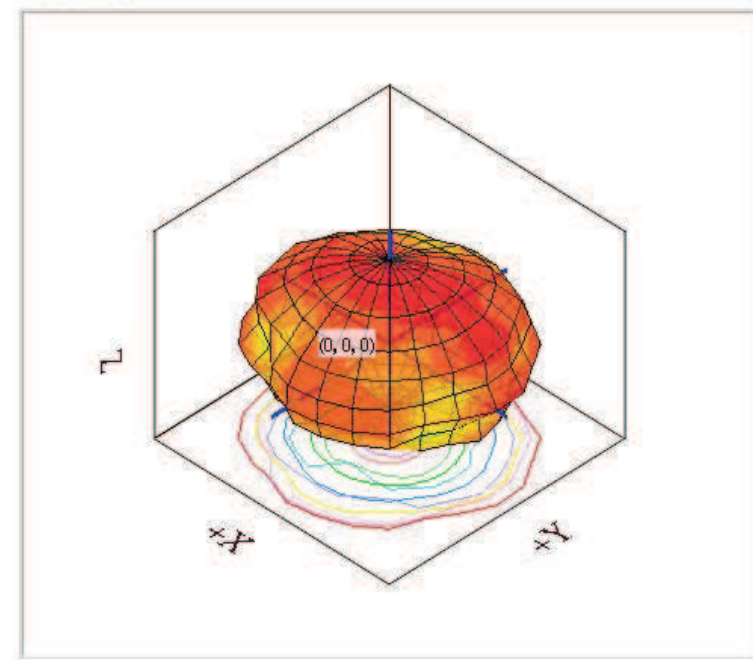
userdefine



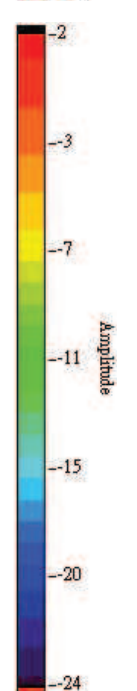
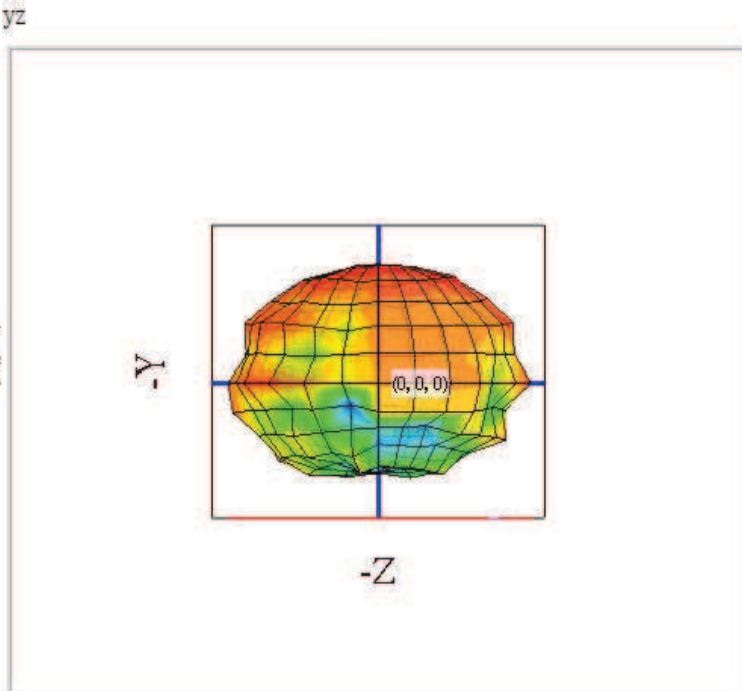
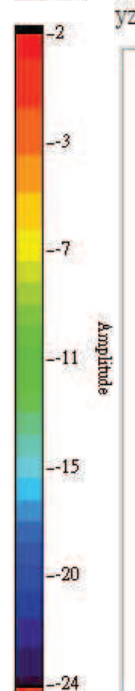
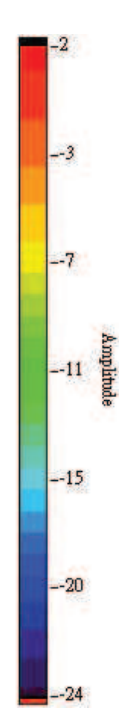
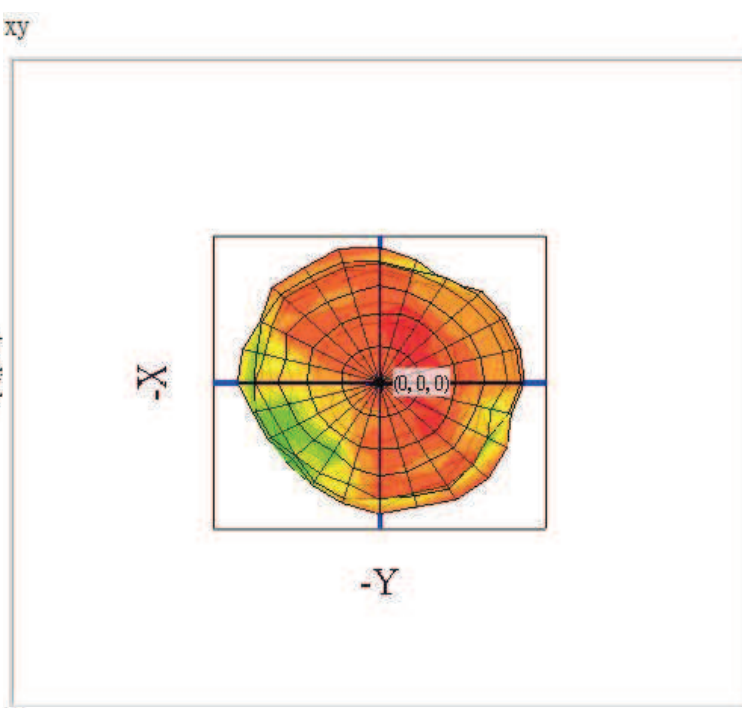
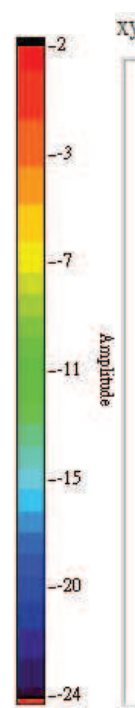
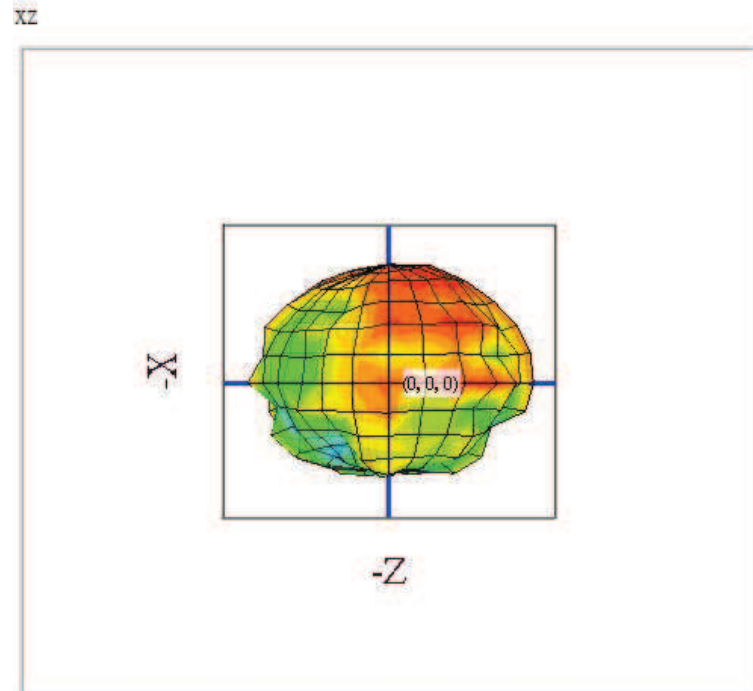
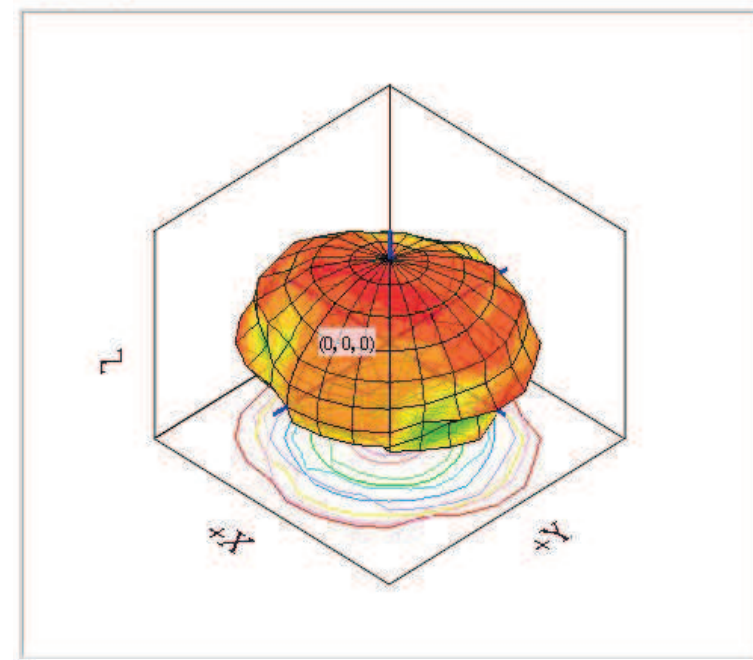
userdefine



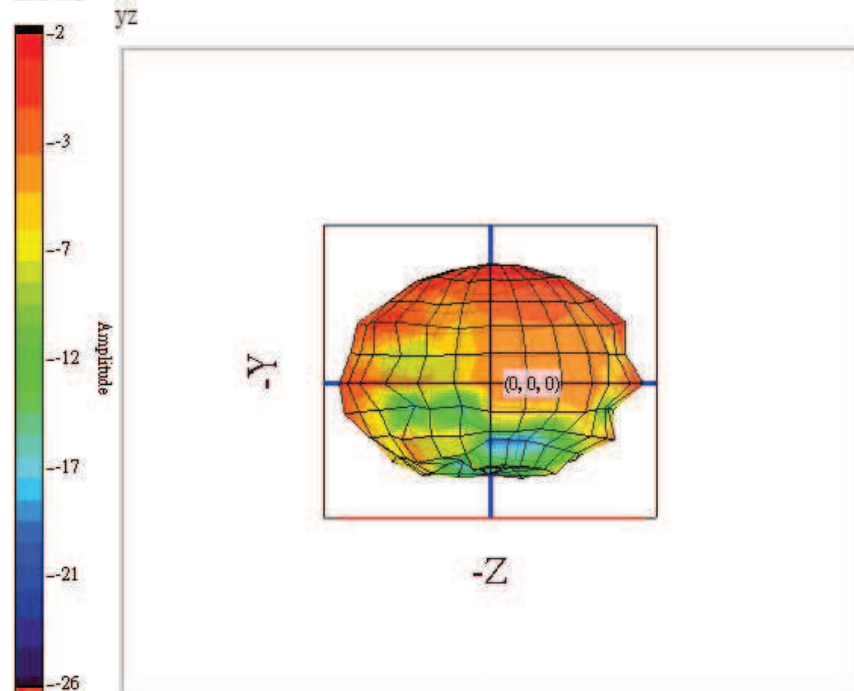
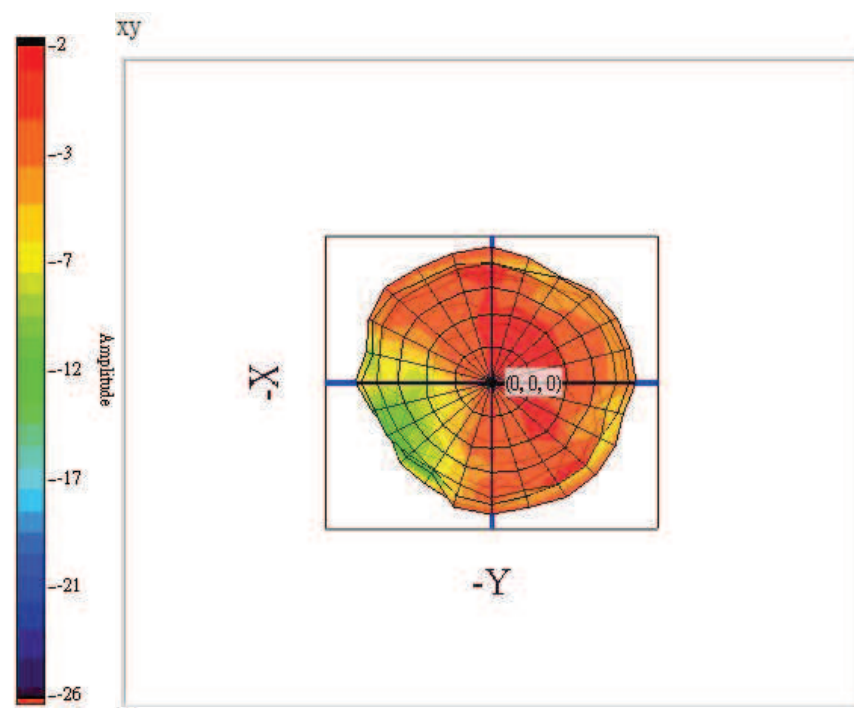
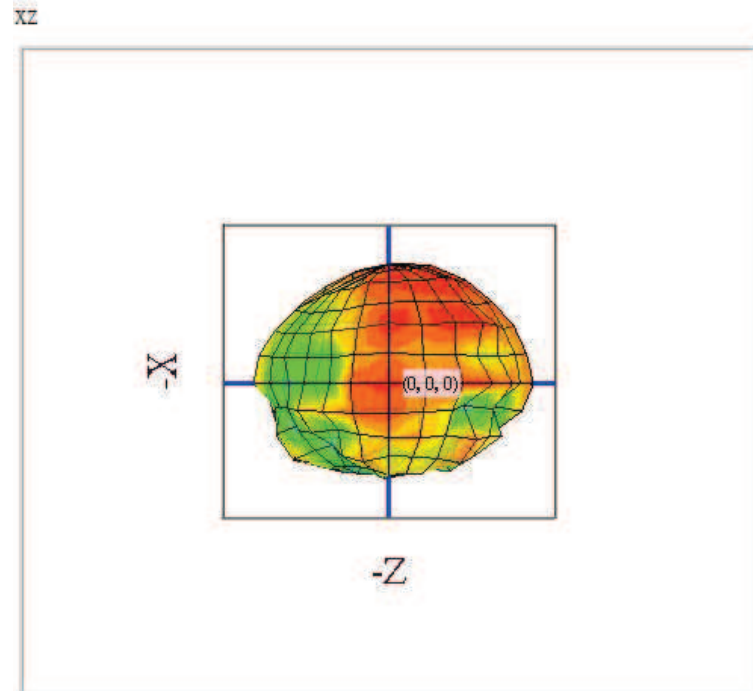
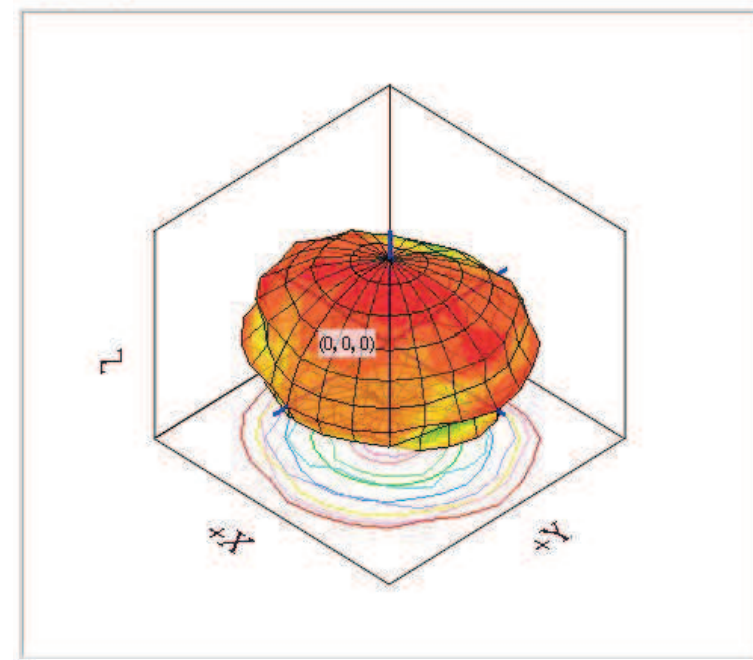
userdefine



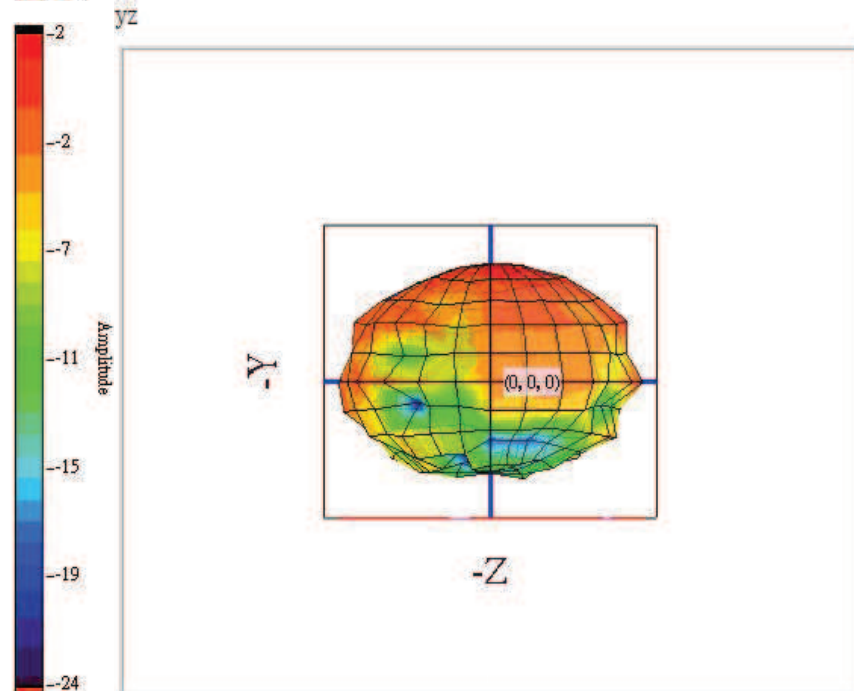
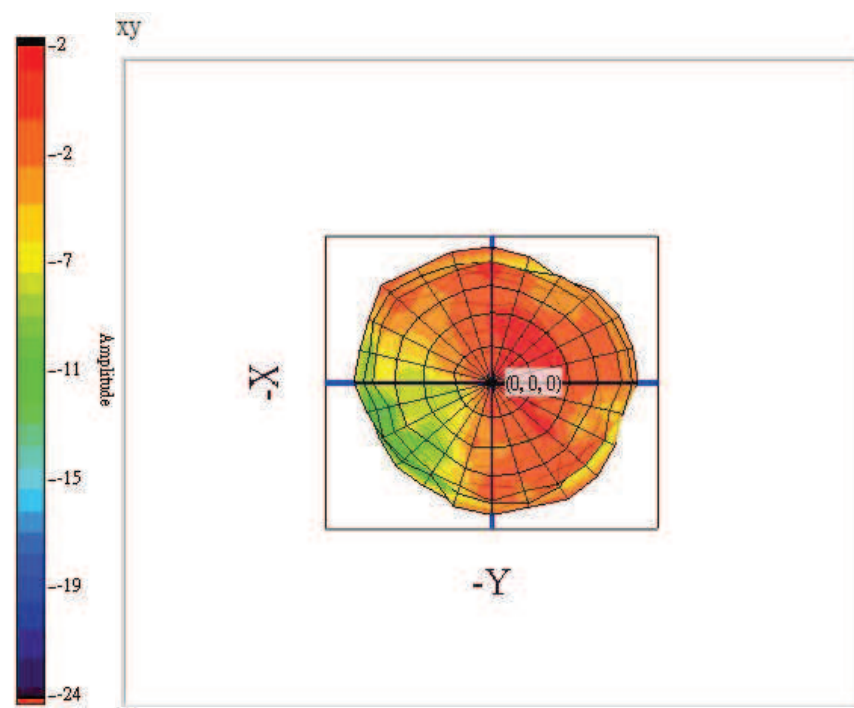
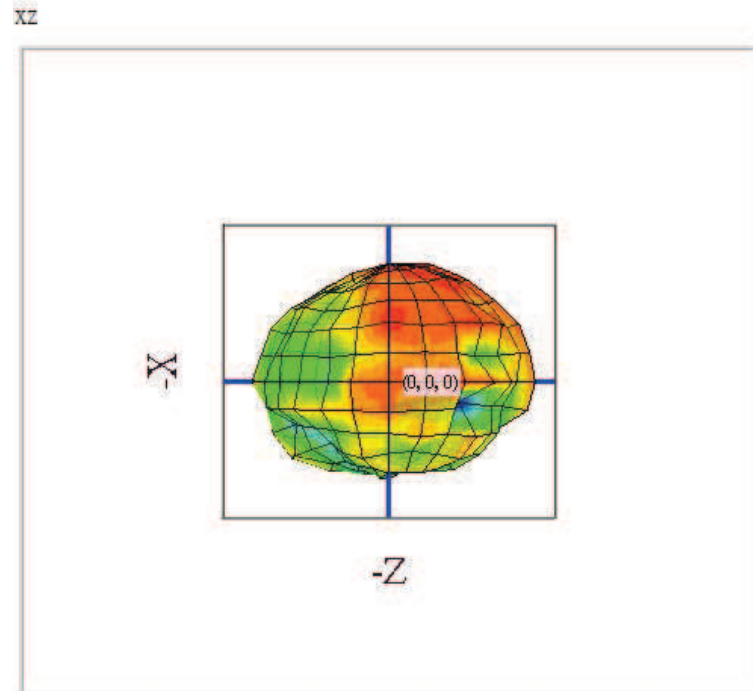
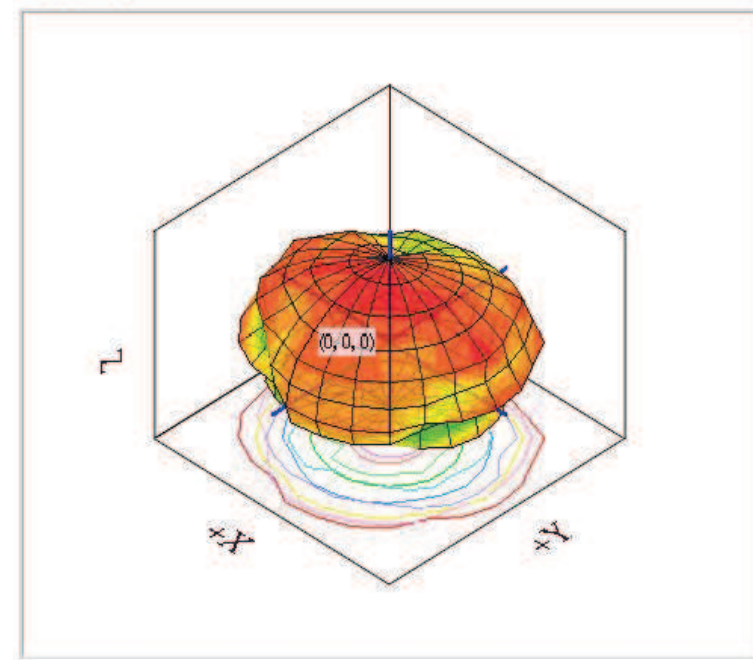
userdefine



userdefine



userdefine



userdefine

