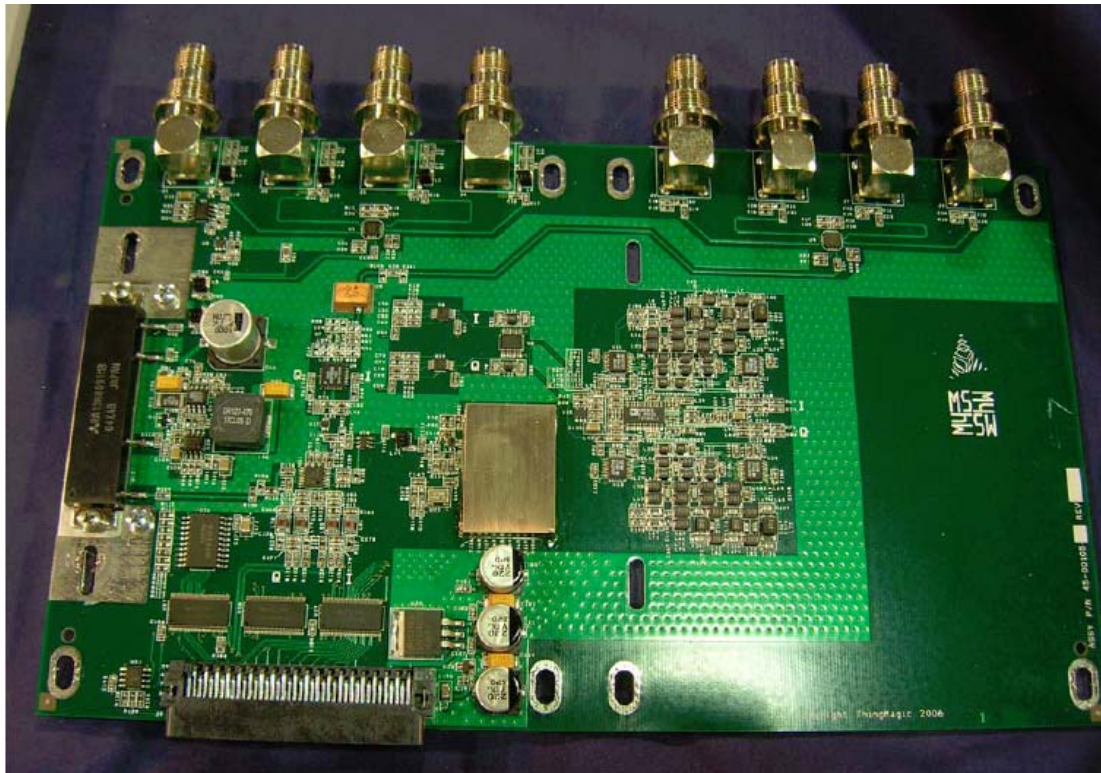


Internal photographs

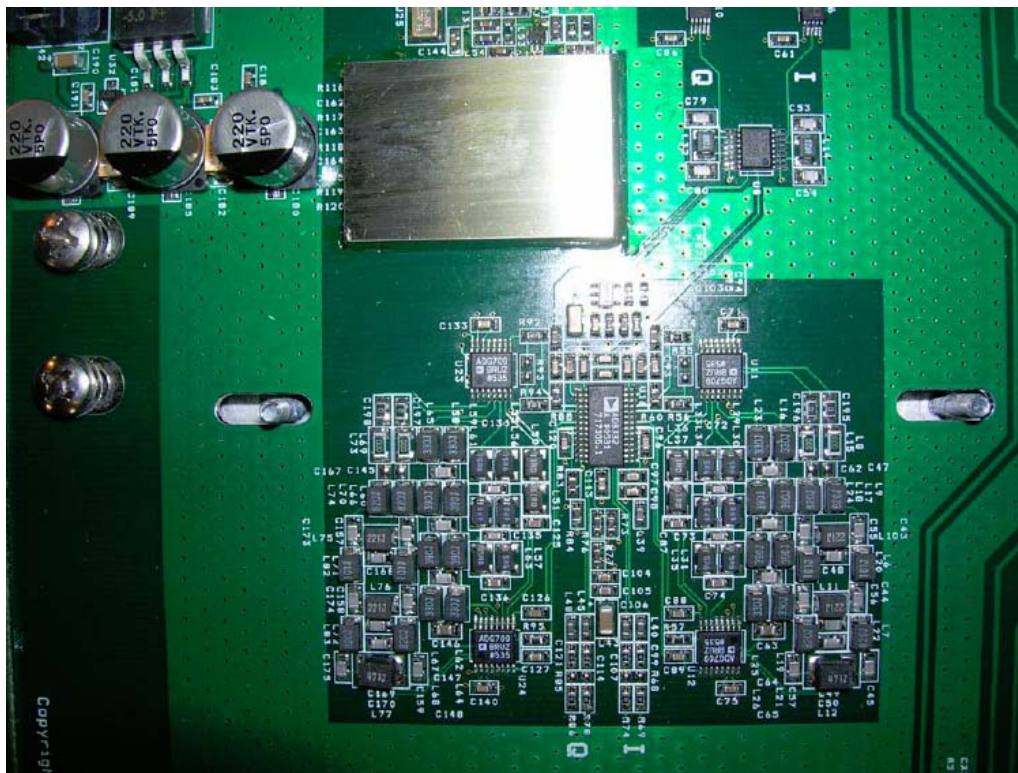
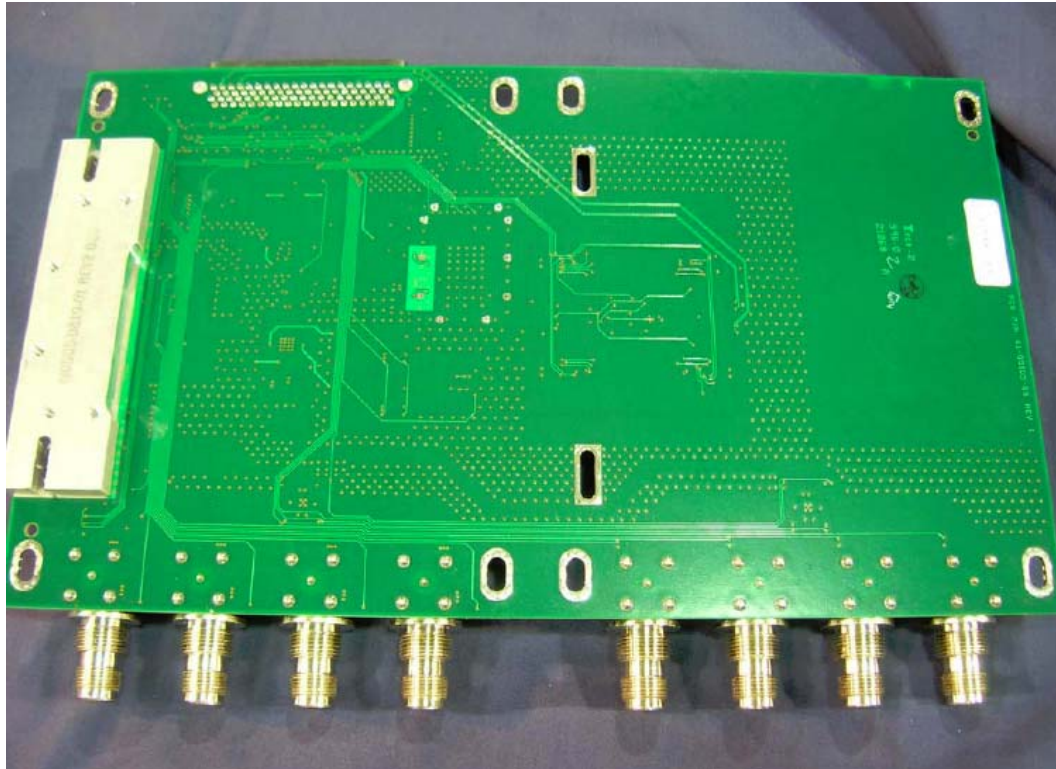


Rogers Labs, Inc.  
4405 W. 259th Terrace  
Louisburg, KS 66053  
Phone/Fax: (913) 837-3214  
Revision 1

Transcore Amtech Technology Center  
Model: X5  
Test #: 091011  
Test to: FCC Parts 2, 90 and RSS-137  
File: Short Term IntPho FIHX5

FCC ID: FIHX5  
IC: 1584A-X5  
Page 1 of 7  
Date: 11/18/2009



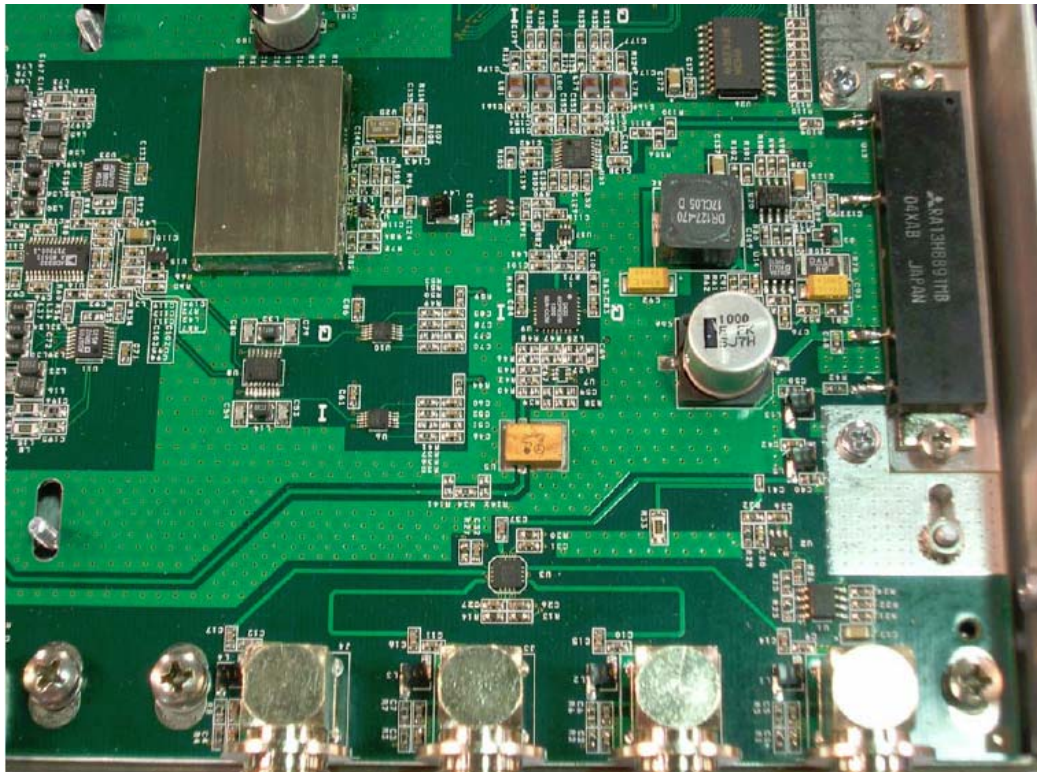
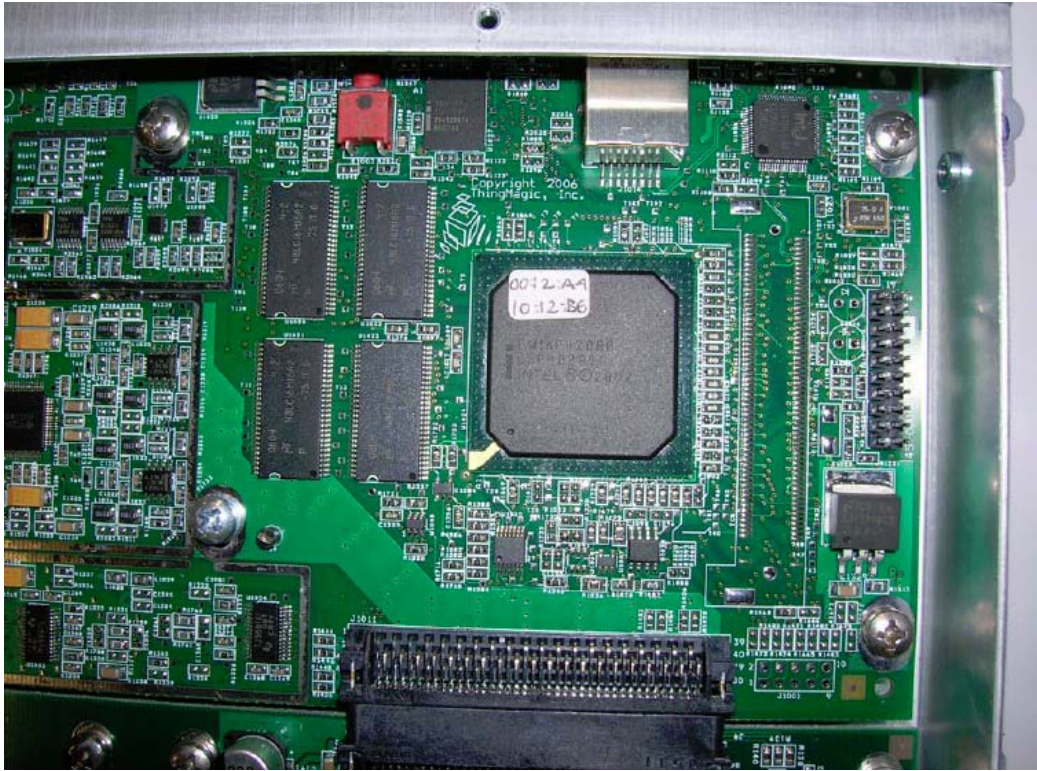


Rogers Labs, Inc.  
 4405 W. 259th Terrace  
 Louisburg, KS 66053  
 Phone/Fax: (913) 837-3214  
 Revision 1

Transcore Amtech Technology Center  
 Model: X5  
 Test #: 091011  
 Test to: FCC Parts 2, 90 and RSS-137  
 File: Short Term IntPho FIHX5

FCC ID: FIHX5  
 IC: 1584A-X5  
 Page 2 of 7  
 Date: 11/18/2009



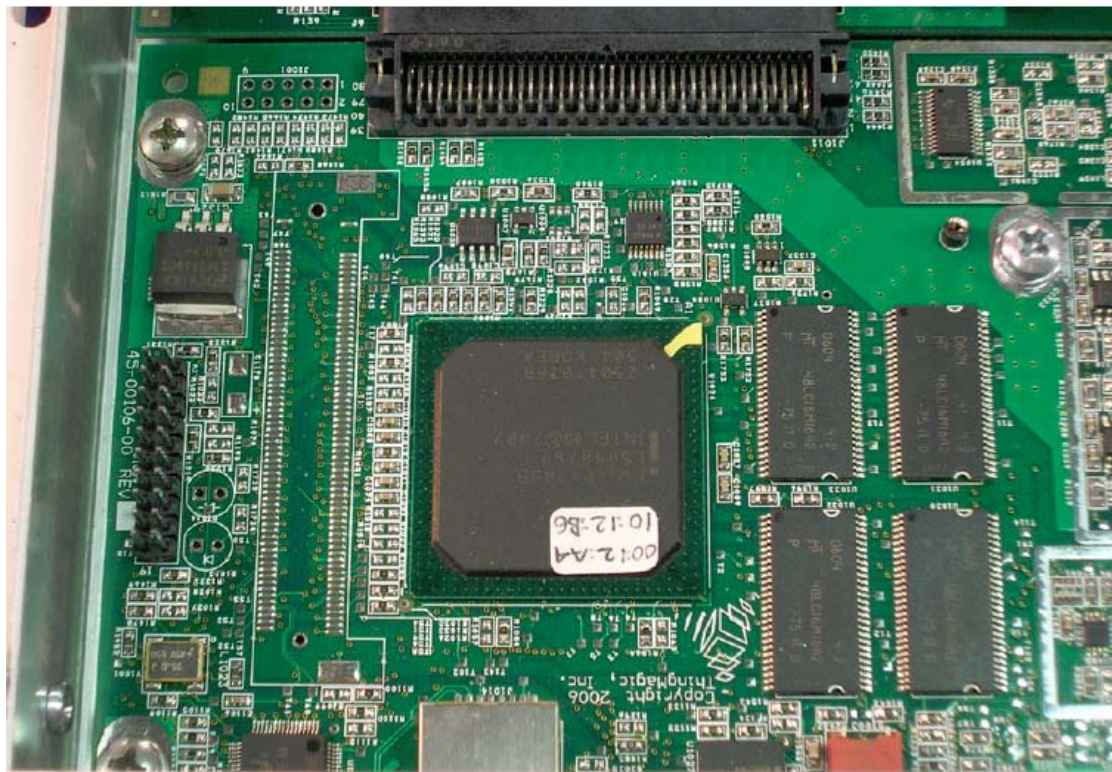
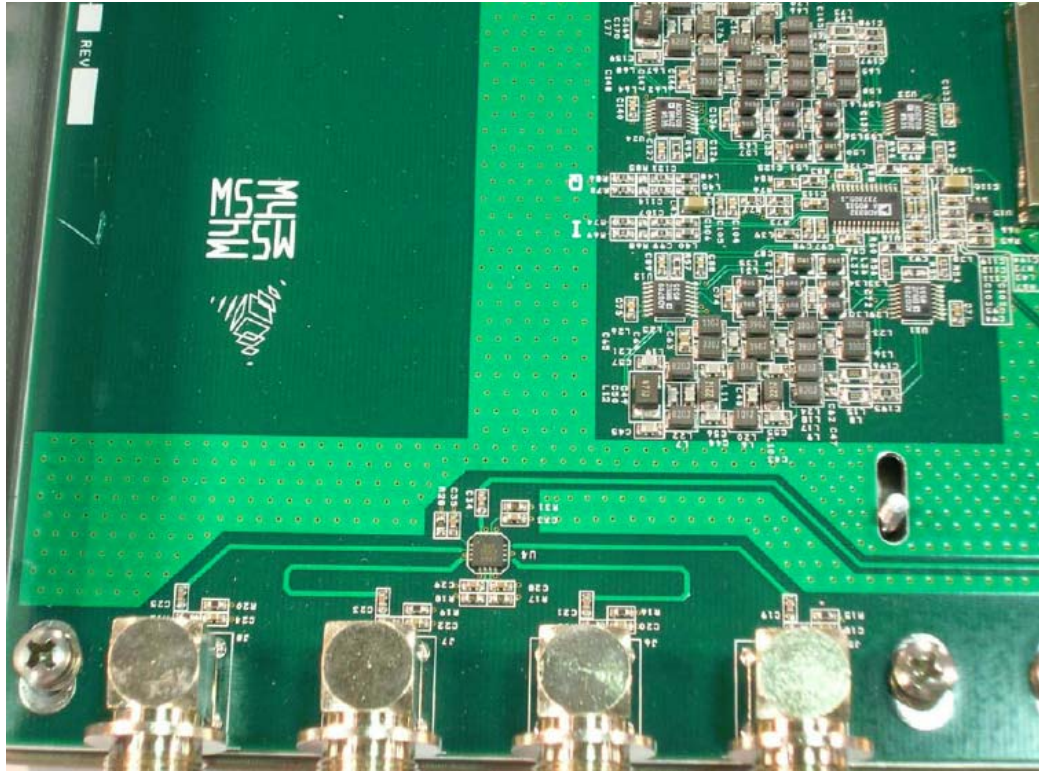


Rogers Labs, Inc.  
4405 W. 259th Terrace  
Louisburg, KS 66053  
Phone/Fax: (913) 837-3214  
Revision 1

Transcore Amtech Technology Center  
Model: X5  
Test #: 091011  
Test to: FCC Parts 2, 90 and RSS-137  
File: Short Term IntPho FIHX5

FCC ID: FIHX5  
IC: 1584A-X5  
Page 3 of 7  
Date: 11/18/2009



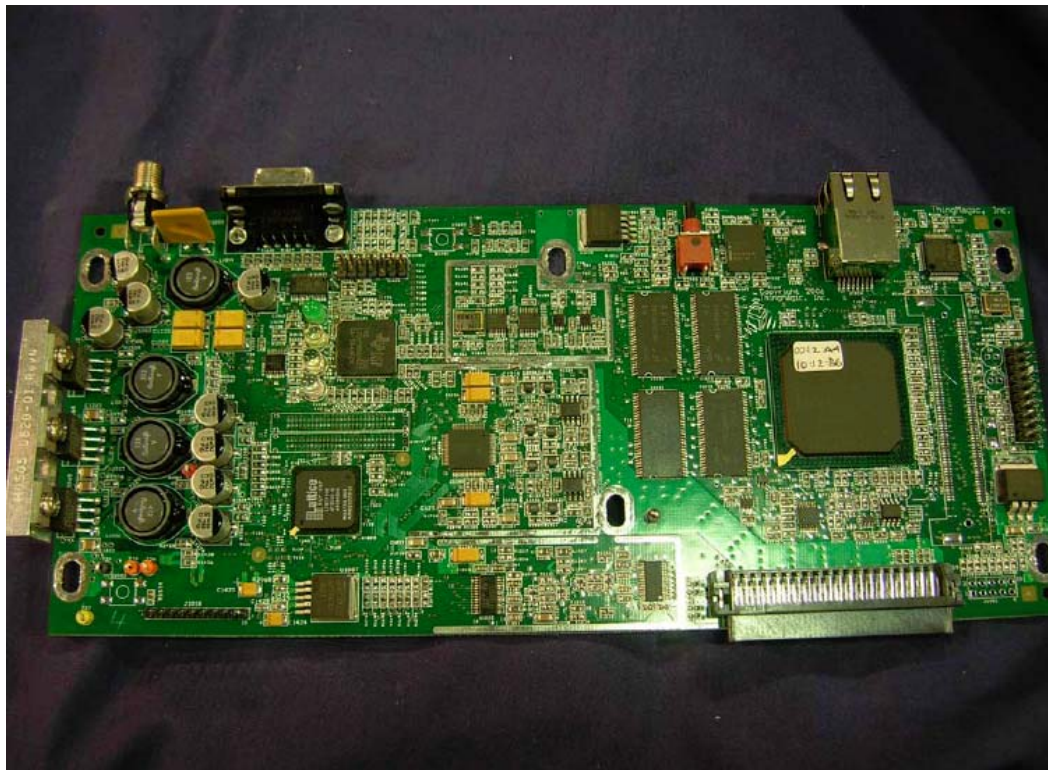


Rogers Labs, Inc.  
 4405 W. 259th Terrace  
 Louisburg, KS 66053  
 Phone/Fax: (913) 837-3214  
 Revision 1

Transcore Amtech Technology Center  
 Model: X5  
 Test #: 091011  
 Test to: FCC Parts 2, 90 and RSS-137  
 File: Short Term IntPho FIHX5

FCC ID: FIHX5  
 IC: 1584A-X5  
 Page 4 of 7  
 Date: 11/18/2009



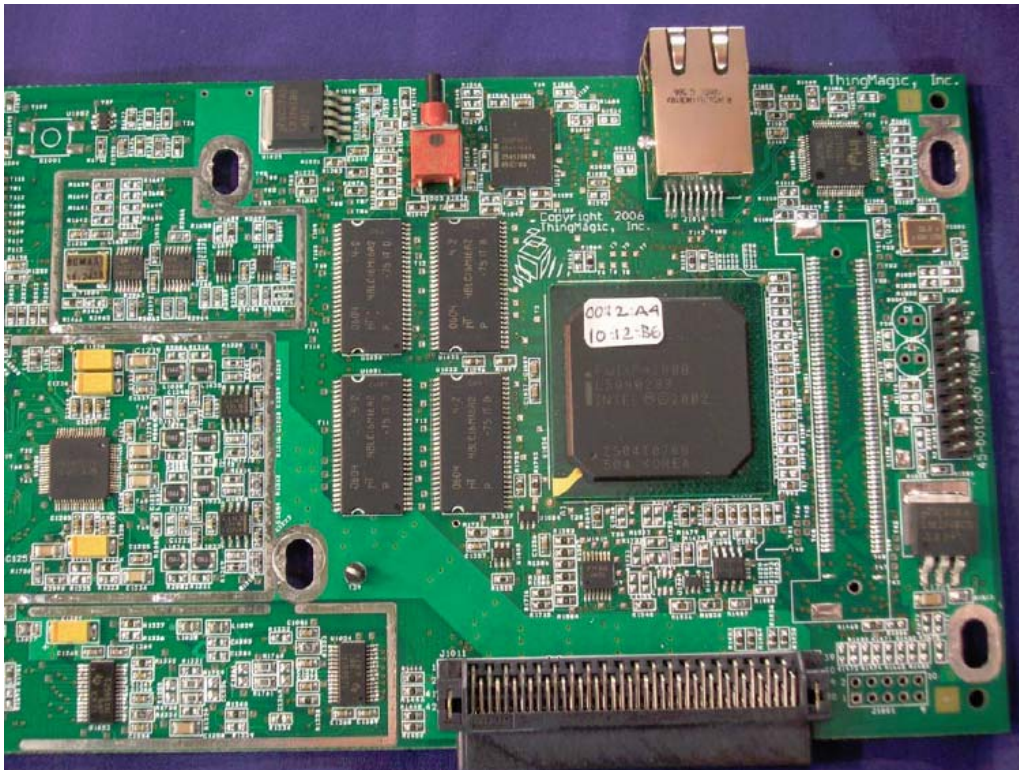
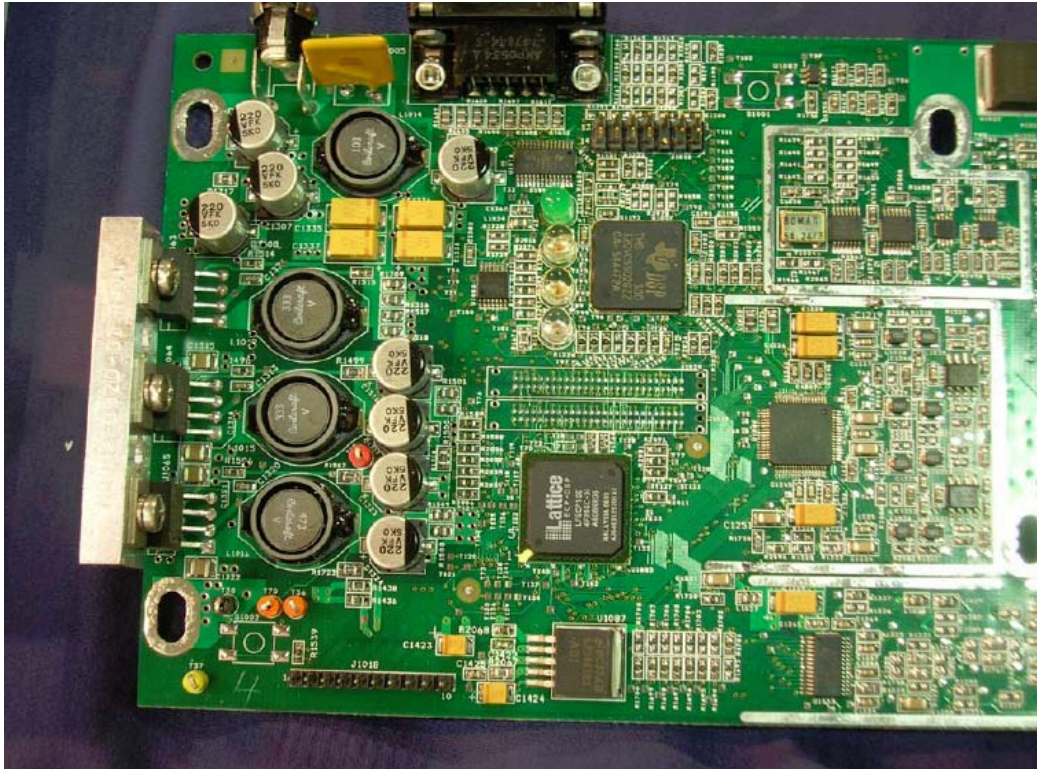


Rogers Labs, Inc.  
4405 W. 259th Terrace  
Louisburg, KS 66053  
Phone/Fax: (913) 837-3214  
Revision 1

Transcore Amtech Technology Center  
Model: X5  
Test #: 091011  
Test to: FCC Parts 2, 90 and RSS-137  
File: Short Term IntPho FIHX5

FCC ID: FIHX5  
IC: 1584A-X5  
Page 5 of 7  
Date: 11/18/2009

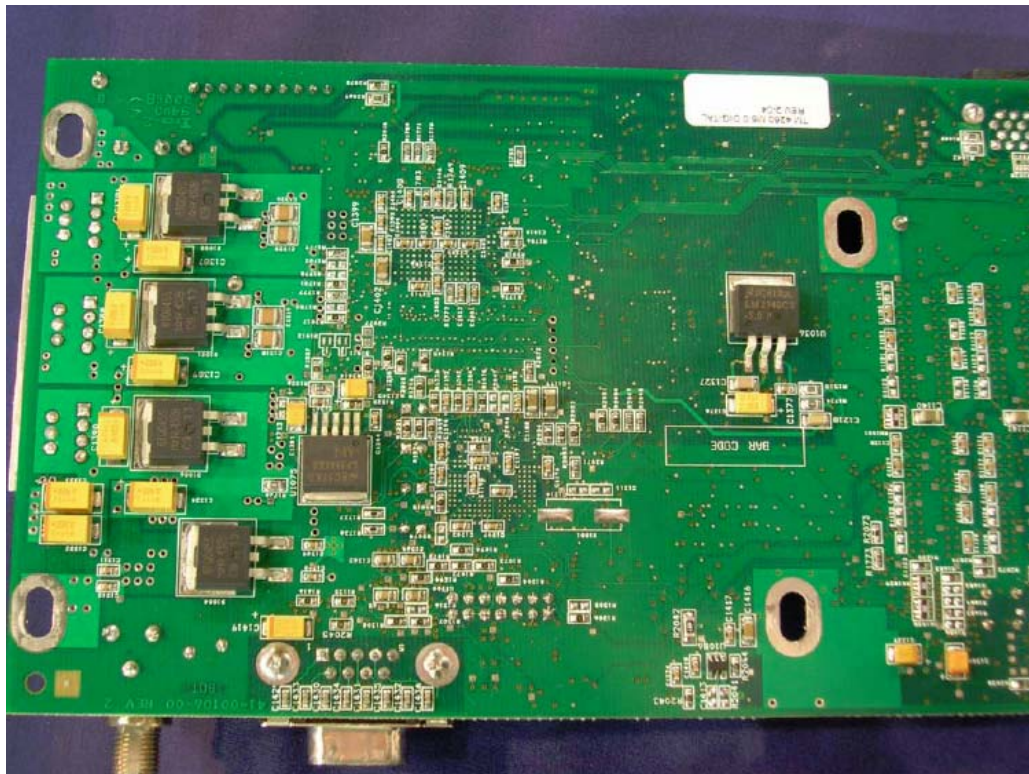




Rogers Labs, Inc.  
 4405 W. 259th Terrace  
 Louisburg, KS 66053  
 Phone/Fax: (913) 837-3214  
 Revision 1

Transcore Amtech Technology Center  
 Model: X5  
 Test #: 091011  
 Test to: FCC Parts 2, 90 and RSS-137  
 File: Short Term IntPho FIHX5

FCC ID: FIHX5  
 IC: 1584A-X5  
 Page 6 of 7  
 Date: 11/18/2009



Rogers Labs, Inc.  
4405 W. 259th Terrace  
Louisburg, KS 66053  
Phone/Fax: (913) 837-3214  
Revision 1

Transcore Amtech Technology Center  
Model: X5  
Test #: 091011  
Test to: FCC Parts 2, 90 and RSS-137  
File: Short Term IntPho FIHX5

FCC ID: FIHX5  
IC: 1584A-X5  
Page 7 of 7  
Date: 11/18/2009