
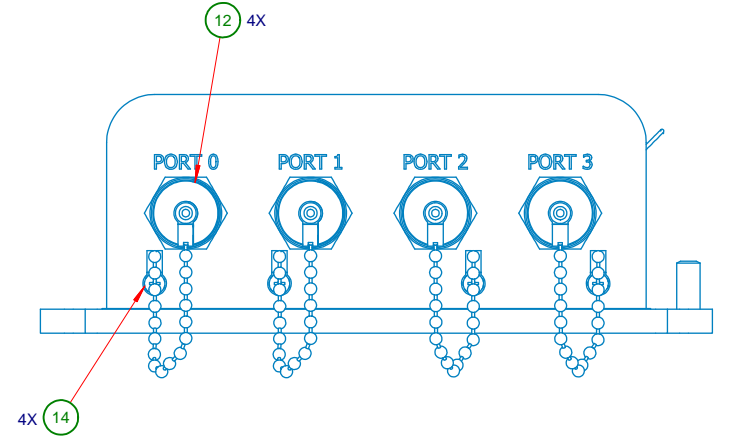
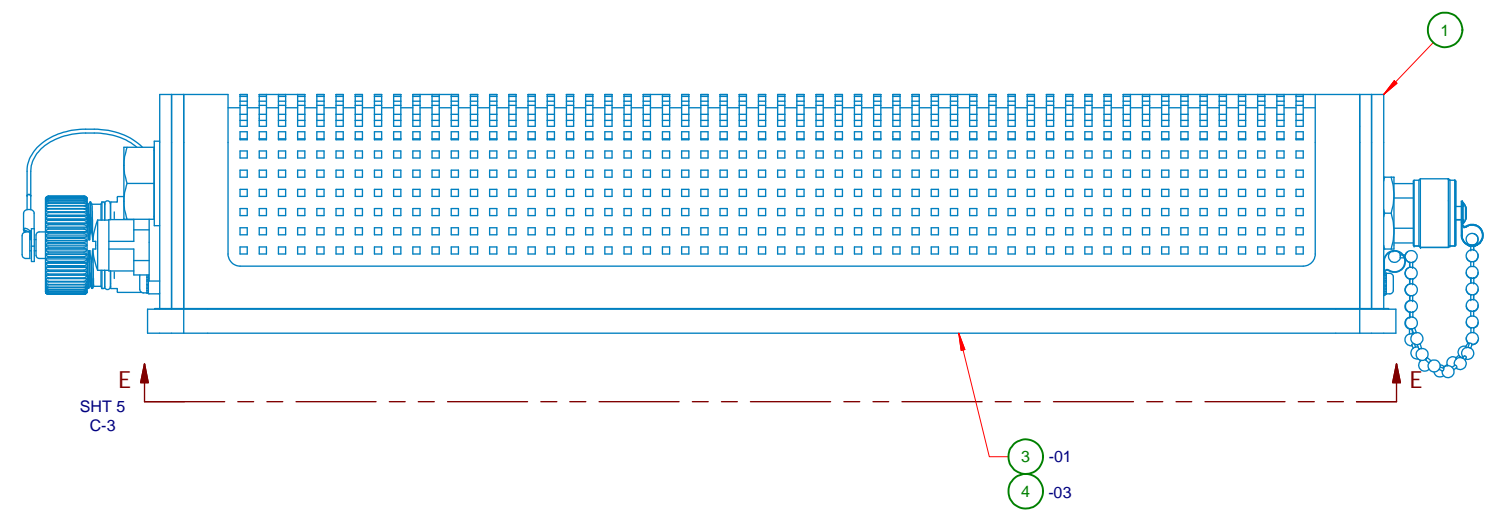
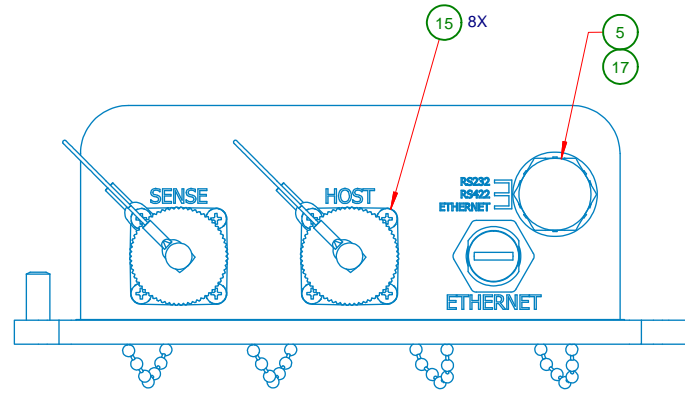
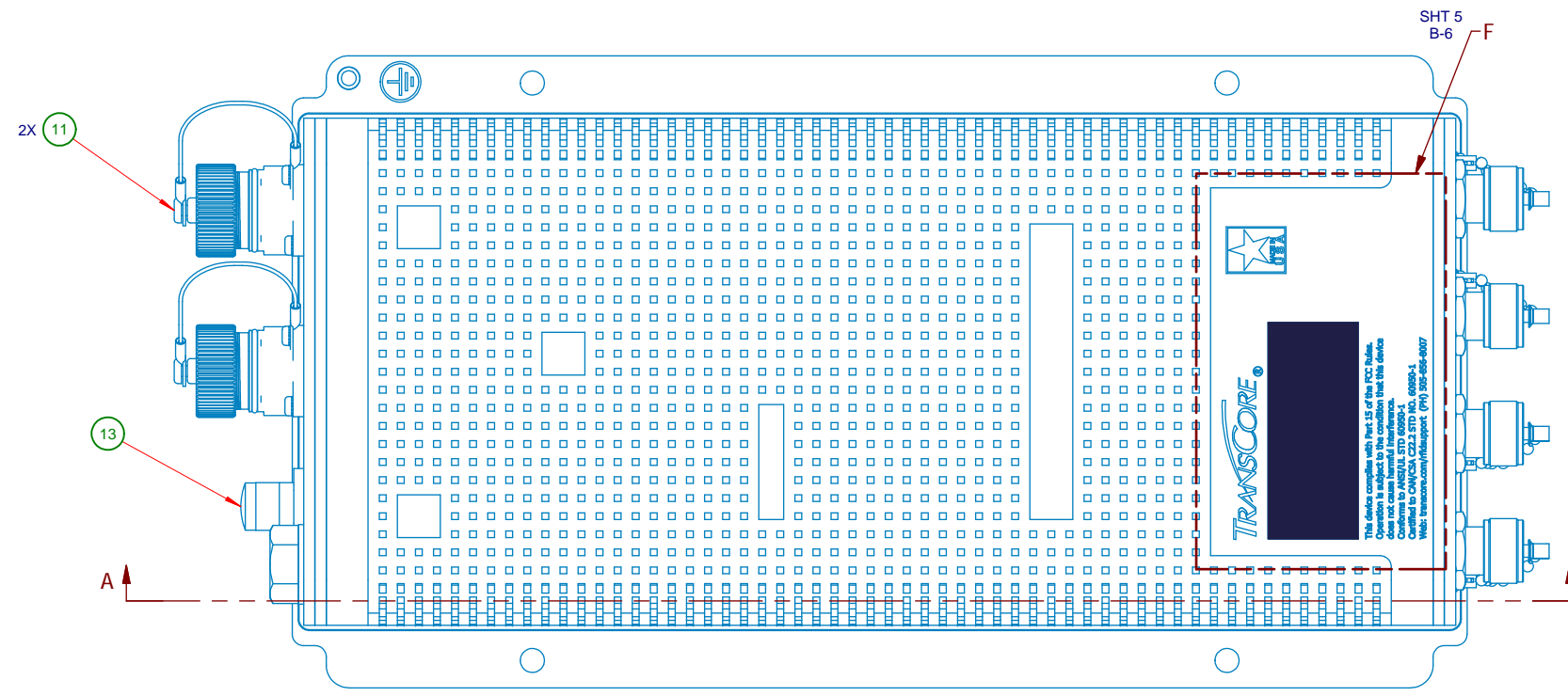


	1	1	1	1	EA	67097-01	PACKAGING ASSEMBLY, MPRR	18
	1	1	1	1	EA	95052-01	WASHER, SEALING, 1/2 INCH SCREW	17
	17	17	17	17	EA	90087-02	SCREW, PAN HD, 4-40, SLOT, SS, 7/16" LONG	16
	10	10	10	10	EA	90004-16	SCR P/H PHIL REC #4-40 X .250	15
	1	4	1	4	EA	90004-15	SCR P/H PHIL REC #4-40 X .188	14
	1	1	1	1	EA	73106-01	CONNECTOR COVER, BRASS, M12, IP67	13
	1	4	1	4	EA	73105-01	PROTECTIVE COVER, TETHERED, TYPE-N CONN	12
	2	2	2	2	EA	73102-01	PROTECTIVE COVER, TETHERED, M23 CIRCULAR CONNECTOR	11
	-	1	-	1	EA	08410-01	CA, ANT MUX TO DSP/PS BD, MPRX	10
	1	1	1	1	EA	08409-01	CABLE ASSY, I/O SWITCH, MPRX	9
	1	1	1	1	EA	08408-01	CABLE ASSY, I/O, MPRX	8
	1	1	1	1	EA	08407-02	CABLE ASSY, ETHERNET, AI1422E	7
	1	1	1	1	EA	08353-01	CABLE ASSY, RIBBON, MPRR	6
	1	1	1	1	EA	01878-01	SCREW, 1/2-20 X 3/8	5
	1	1	-	-	EA	05951-02	ASSEMBLY, BASEPLATE, MPRX	4
	-	-	1	1	EA	05951-01	ASSEMBLY, BASEPLATE, MPRX	3
	1	-	1	-	EA	05950-02	ASSEMBLY, ENCLOSURE TOP, MPRX	2
	-	1	-	1	EA	05950-01	ASSEMBLY, ENCLOSURE TOP, MPRX	1
-05	-04	-03	-02	-01	U/M	PART NUMBER	DESCRIPTION	ITEM

Parts List

REVISION	APPR	CM	JC				<b>APPROVALS</b>		 <p>Amtech Technology Center 8600 Jefferson Street NE Albuquerque, NM 87113 (505) 856-8000</p>	
	DATE	6/15/16	9/9/16				NAME	INITIALS		DATE
	ECO NO.	-	18010				DFTR	JDC		6/13/16
	REV	2A	2B				DSGNR	JO		6/14/16
							CHKR	CM		6/14/16
							PROJ	JO		6/14/16
							ENGRG	MM		6/14/16
							MFG	MG		6/14/16
							MATRL	AP		6/15/16
							QA	TR		6/15/16
							<b>DRAWING TITLE</b>		<b>ASSEMBLY, MPRX</b>	
					AMTECH PROPRIETARY INFORMATION		DO NOT SCALE DRAWING			
SCALE		DRAWING NO.			SHEET					
N/A		05952-00			1		OF 1			

		REVISIONS					
REV	ECO	DESCRIPTION	E. DATE	I. DATE	DFTR.	CHKR.	ENGR.
2A	-	CONFIGURATION CONTROL RELEASE	-	6/15/16	JDC	CM	-
2B	18010	REVISED PER ECO	9/6/16	9/9/16	CM	JC	ID

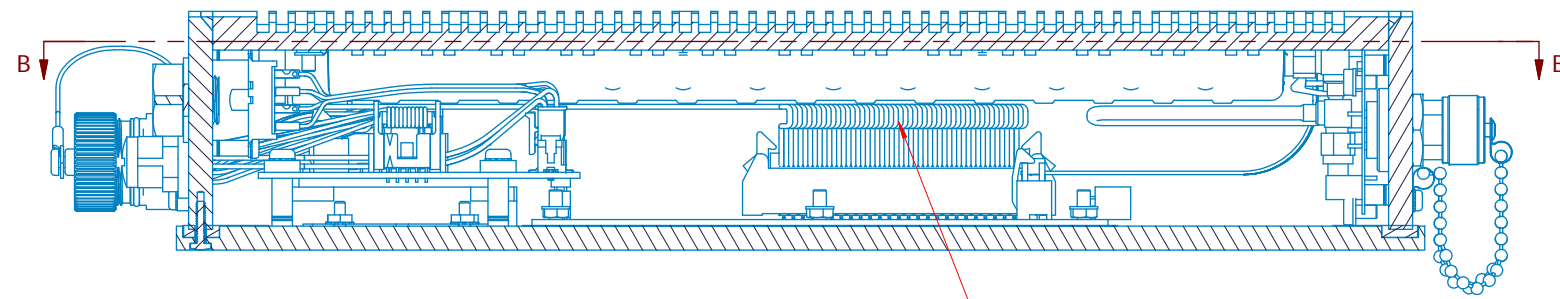


NOTES: UNLESS OTHERWISE SPECIFIED

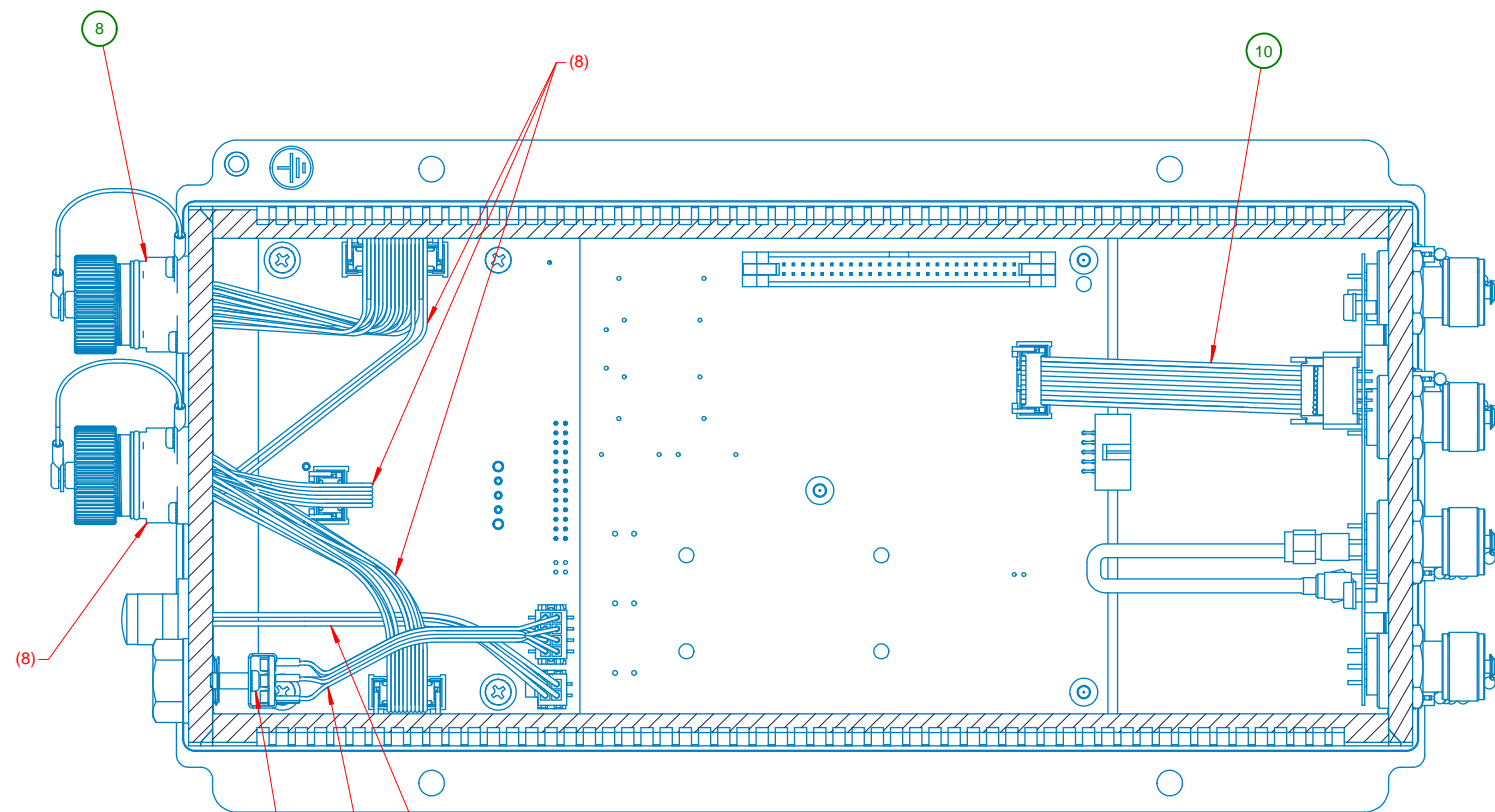
1. TEXT WILL BE LASER ETCHED INTO HOUSING.
2. TEXT HEIGHT TO BE 5 PT, FONT IS ARIAL.
3. TORQUE ALL HARDWARE TO STANDARD SIZE APPROPRIATE SPECIFICATION.
4. INSTALL SCEWS (ITEM 16) PER SCREW PATTERN ON SHEET 5. TORQUE TO 12 IN-LBS +/- 1 IN-LBS.
- 2B 5. APPLY "MODEL NUMBER MPRX".
6. APPLY SERIAL NUMBER IN THE SPACE PROVIDED.
7. APPLY DATE OF MANUFACTURE IN THE SPACE PROVIDED.
8. APPLY REVISION OF TOP LEVEL ASSEMBLY IN THE SPACE PROVIDED.
9. APPLY FREQUENCY IN THE SPACE PROVIDED.
- 2B 10. APPLY PRIMARY POWER SPECIFICATION IN THE SPACE PROVIDED AS FOLLOWS: a) -01 & -02 APPLY "+24-110 VDC ---" b) -03 & -04 APPLY "+9-36 VDC ---"
- 2B 11. APPLY FCC ID "FIHMPRX".
- 2B 12. APPLY IC (INDUSTRY CANADA) ID "1584A-MPRX".
13. PACKING MATERIAL NOT SHOWN AT THIS LEVEL. REFERENCE 67097-01 FOR PACKING DETAIL.
- 2B 14. APPLY ASSEMBLY NUMBER "05XXX-XX" IN THE SPACE PROVIDED REPLACING THE "XXX-XX" WITH THE APPROPRIATE NUMBER.

**-01,-03**

			Amtech Technology Center 8600 Jefferson Street NE Albuquerque, NM 87113 (505) 856-8000			
			DRAWING TITLE <h2 style="text-align: center;">ASSEMBLY, MPRX</h2>			
DFTR	JDC	6/13/16	AMTECH PROPRIETARY INFORMATION TOLERANCE UNLESS OTHERWISE SPECIFIED .XX± .XXX± ANGLES (±) SURFACE ✓	DO NOT SCALE DRAWING		
DSGNR	JO	6/14/16		SCALE	SIZE	DRAWING NO.
CHKR	CM	6/14/16		1:1	D	05952-00
PROJ	JO	6/14/16		SHEET		1 OF 5
ENGRG	MM	6/14/16				
MFG	MG	6/14/16				
MATRL	AP	6/14/16				
QA	TR	6/14/16				



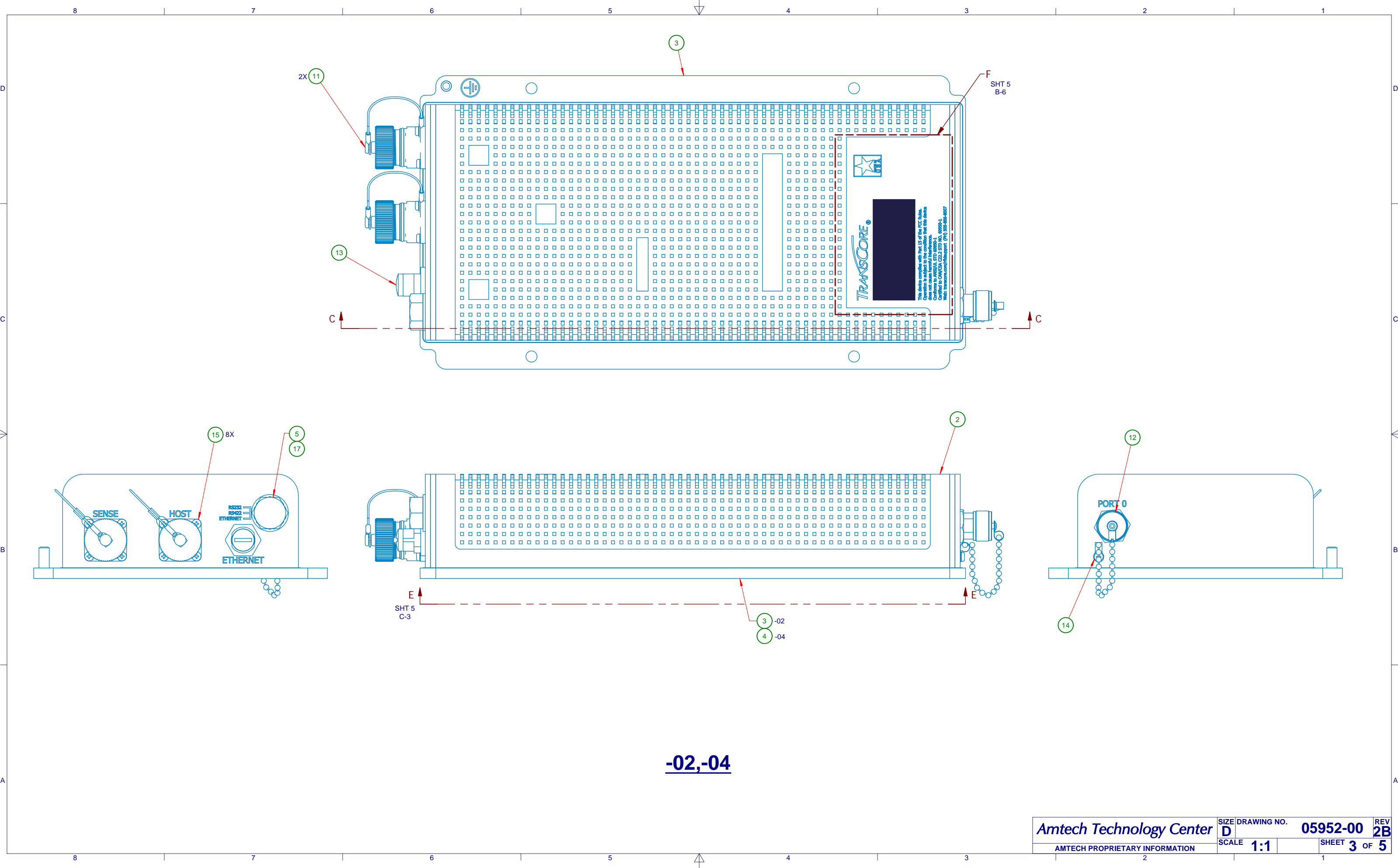
SECTION A-A  
SCALE 1 : 1



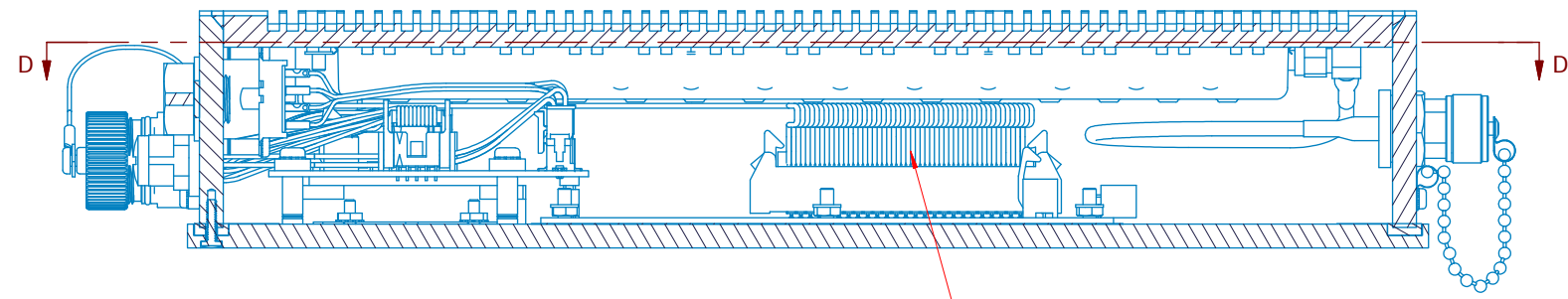
SECTION B-B  
SCALE 1 : 1

**-01,-03**

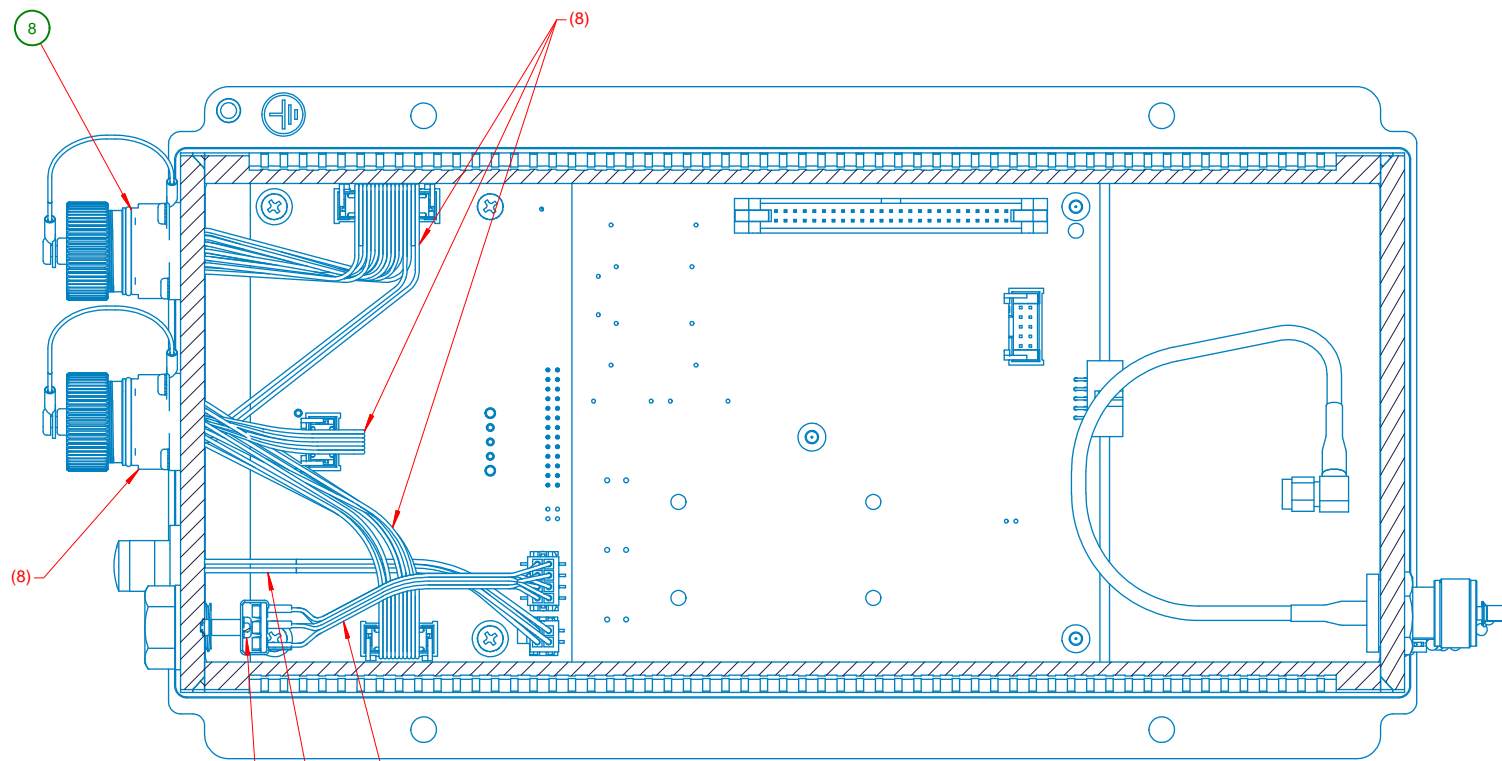
Amtech Technology Center	SIZE	DRAWING NO.	REV
	D	05952-00	2B
AMTECH PROPRIETARY INFORMATION	SCALE	N/A	SHEET 2 OF 5



**-02,-04**



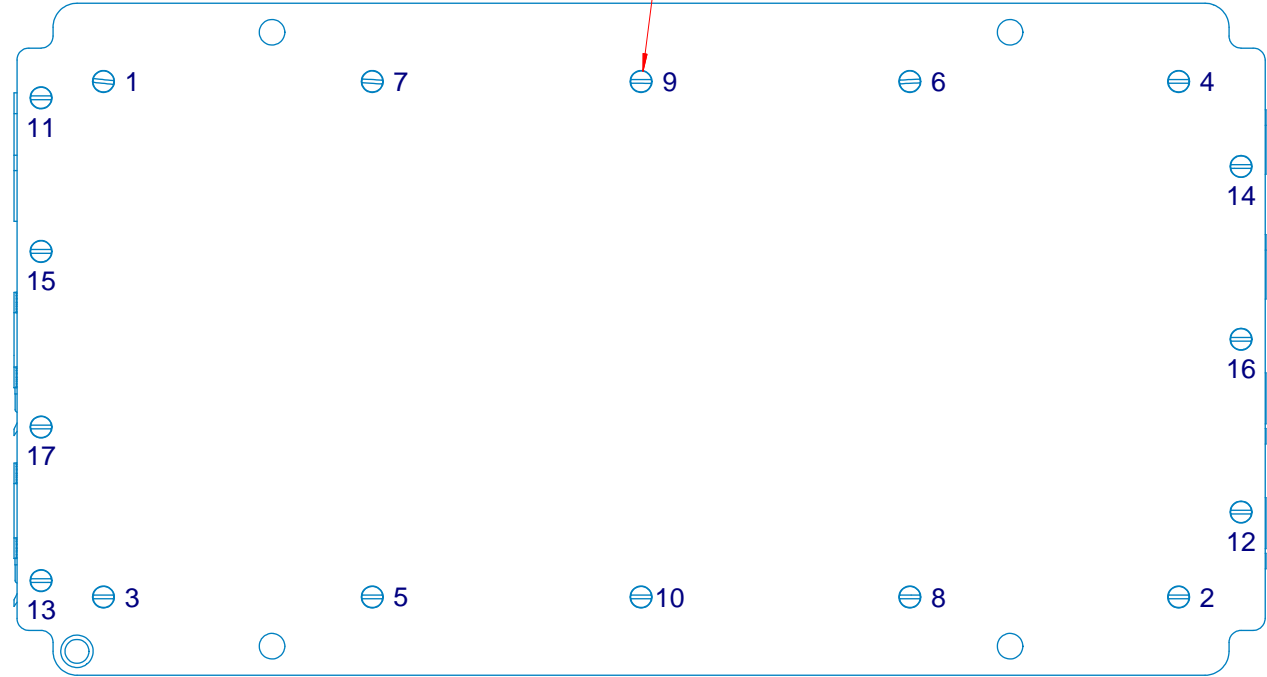
SECTION C-C  
SCALE 1 : 1



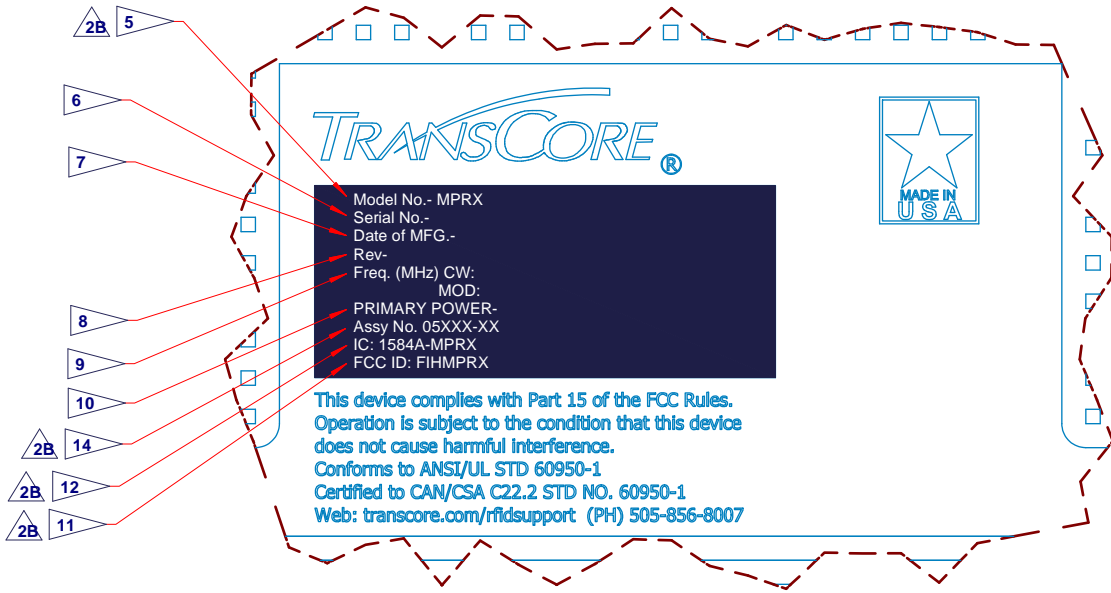
SECTION D-D  
SCALE 1 : 1

**-02,-04**

Amtech Technology Center	SIZE	DRAWING NO.	REV
	D	05952-00	2B
AMTECH PROPRIETARY INFORMATION	SCALE	N/A	SHEET 4 OF 5



VIEW E-E  
SCALE 1 : 1



DETAIL F  
SCALE 2 : 1  
ROTATED 90° CW

**TRANSCORE**  
 Model No.- MPRX  
 Serial No.-  
 Date of MFG.-  
 Rev-  
 Freq. (MHz) CW:  
 MOD:  
 PRIMARY POWER-  
 Assy No. 05XXX-XX  
 IC: 1584A-MPRX  
 FCC ID: FIHMPRX

This device complies with Part 15 of the FCC Rules.  
 Operation is subject to the condition that this device  
 does not cause harmful interference.  
 Conforms to ANSI/UL STD 60950-1  
 Certified to CAN/CSA C22.2 STD NO. 60950-1  
 Web: [transcore.com/rfidsupport](http://transcore.com/rfidsupport) (PH) 505-856-8007



**-01,-02,-03,-04**

Amtech Technology Center	SIZE	DRAWING NO.	REV
	D	05952-00	2B
AMTECH PROPRIETARY INFORMATION	SCALE	SHEET	
	N/A	5 OF 5	