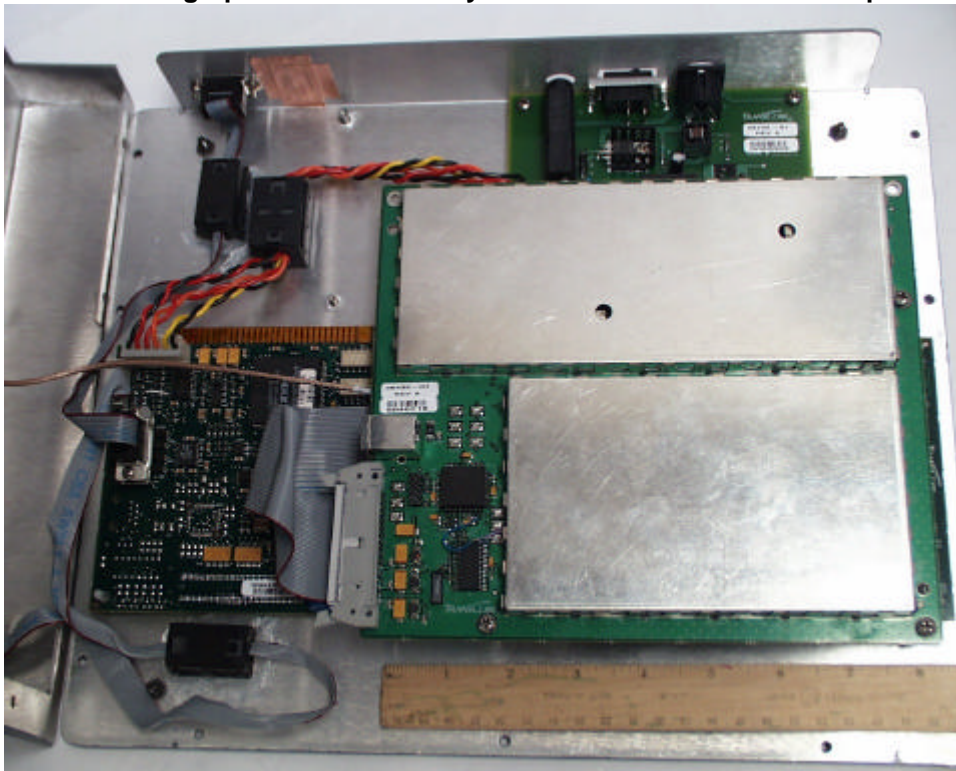


AP4118 Photographs of the inside layout of the unit with RF PCB in place.



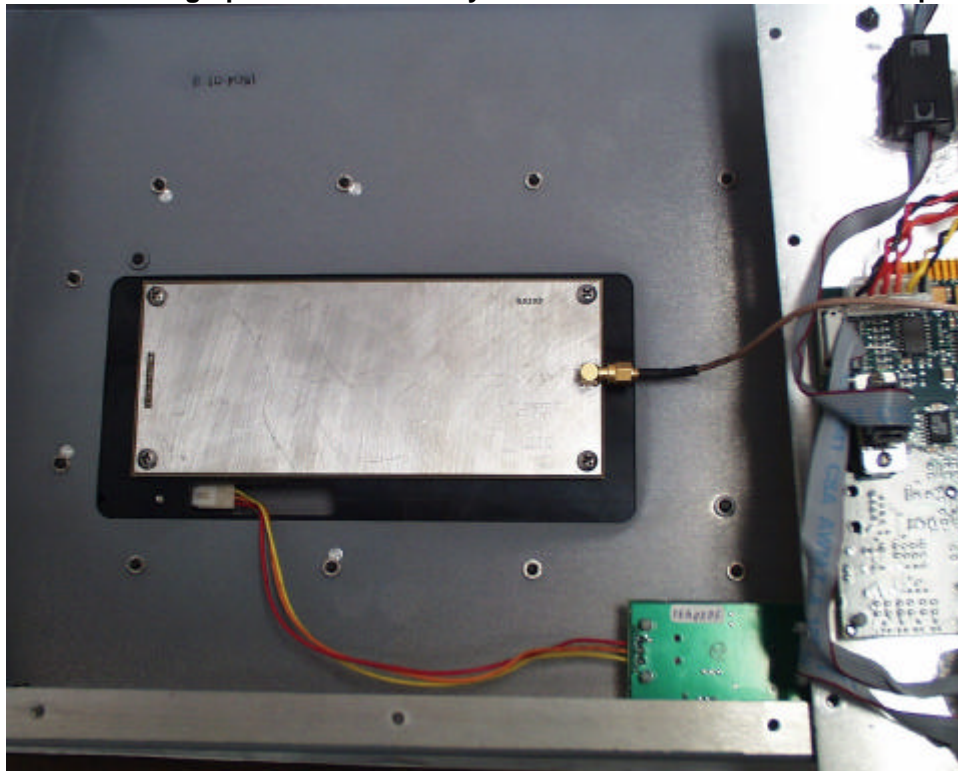
AP4118 Photographs of the inside layout of the unit with RF PCB removed.



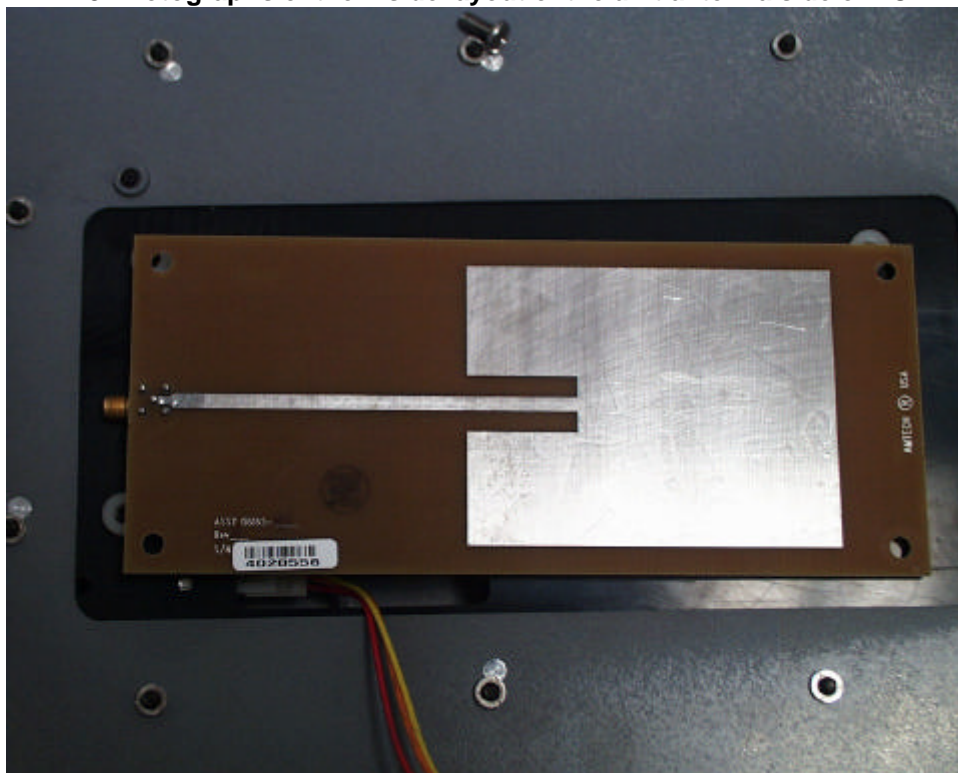
ROGERS LABS, INC.
4405 W. 259th Terrace
Louisburg, KS 66053
Phone/Fax: (913) 837-3214

TRANSCORE AMTECH TECHNOLOGY CENTER
MODEL: AP4118
Test #: 050408 FCC ID#: FIH AP411805430
Test to: FCC Parts 2 and 15

AP4118 Photographs of the inside layout of the unit with the antenna in place.



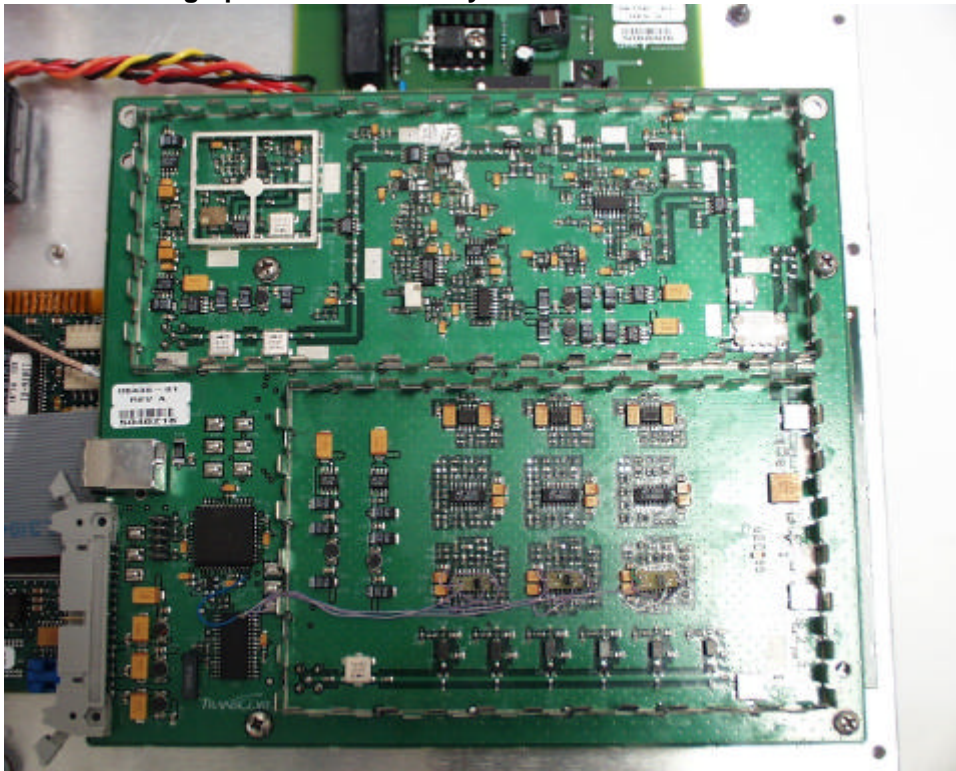
AP4118 Photographs of the inside layout of the unit antenna side of PCB.



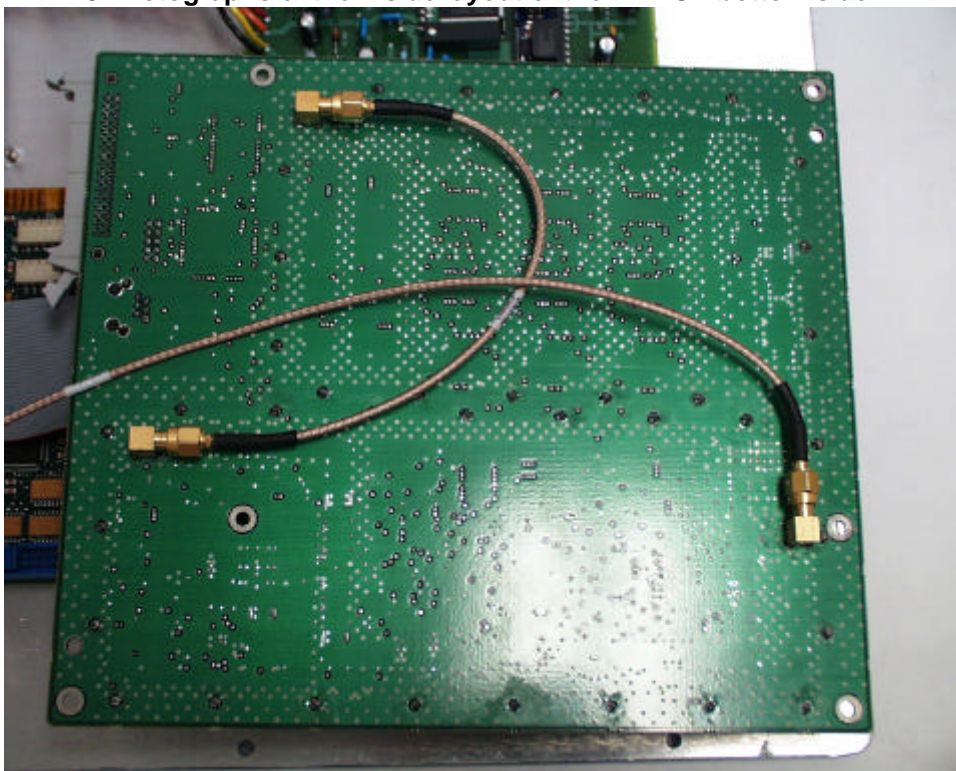
ROGERS LABS, INC.
4405 W. 259th Terrace
Louisburg, KS 66053
Phone/Fax: (913) 837-3214

TRANSCORE AMTECH TECHNOLOGY CENTER
MODEL: AP4118
Test #: 050408 FCC ID#: FIH AP411805430
Test to: FCC Parts 2 and 15

AP4118 Photographs of the inside layout of the RF PCB with covers removed.



AP4118 Photographs of the inside layout of the RF PCB bottom side.



ROGERS LABS, INC.
4405 W. 259th Terrace
Louisburg, KS 66053
Phone/Fax: (913) 837-3214

TRANSCORE AMTECH TECHNOLOGY CENTER
MODEL: AP4118
Test #: 050408 FCC ID#: FIH AP411805430
Test to: FCC Parts 2 and 15