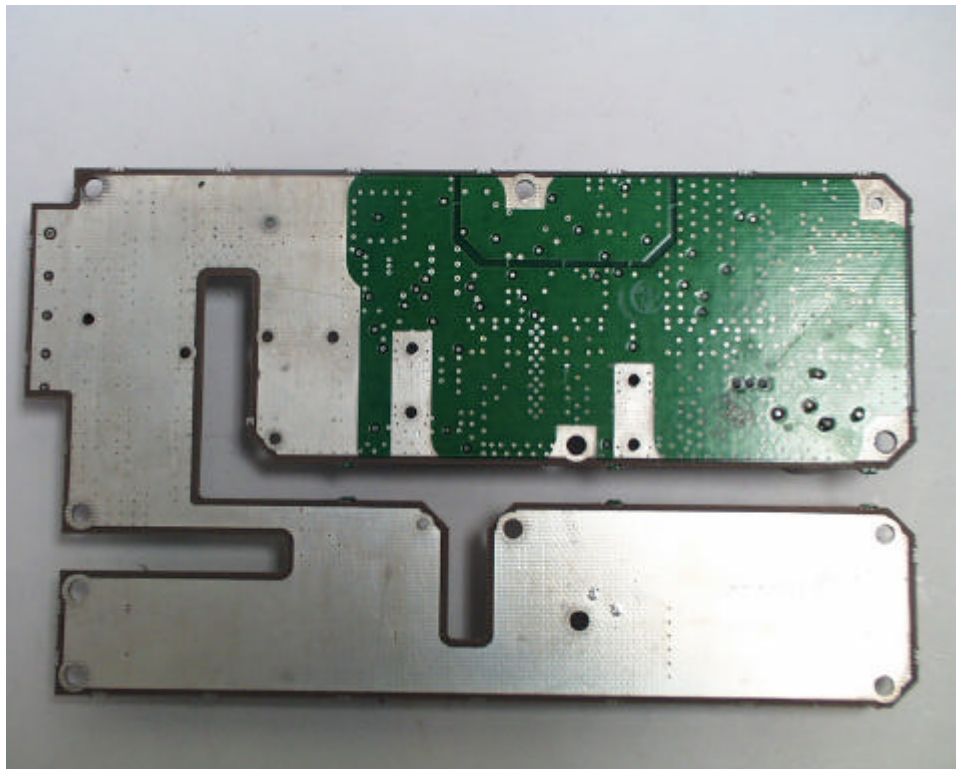
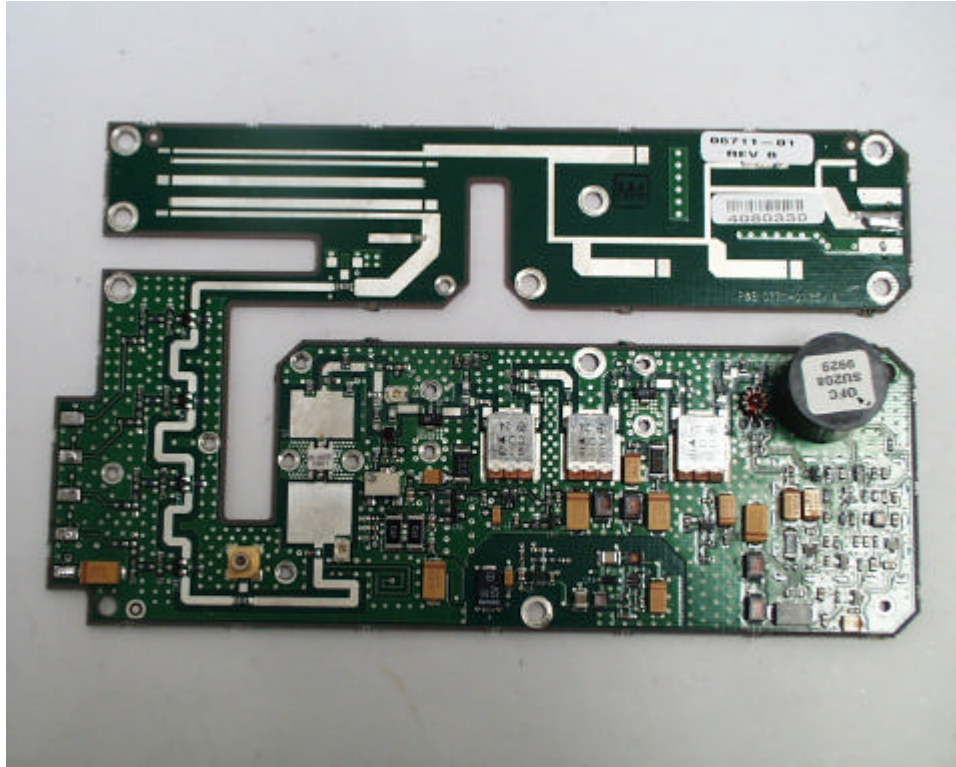
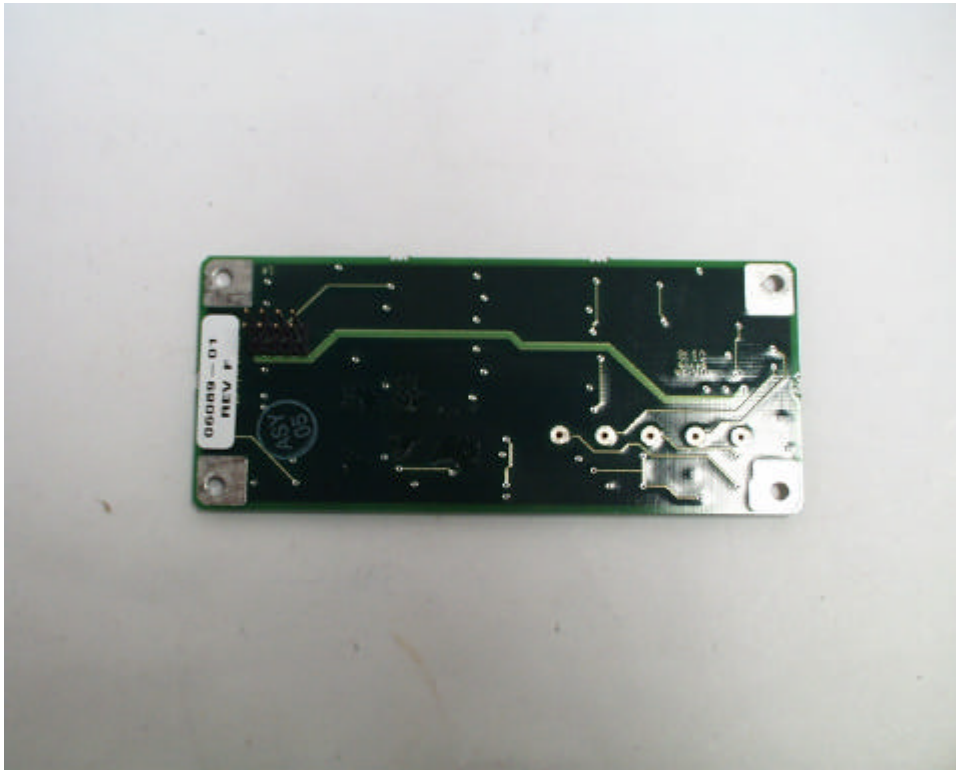
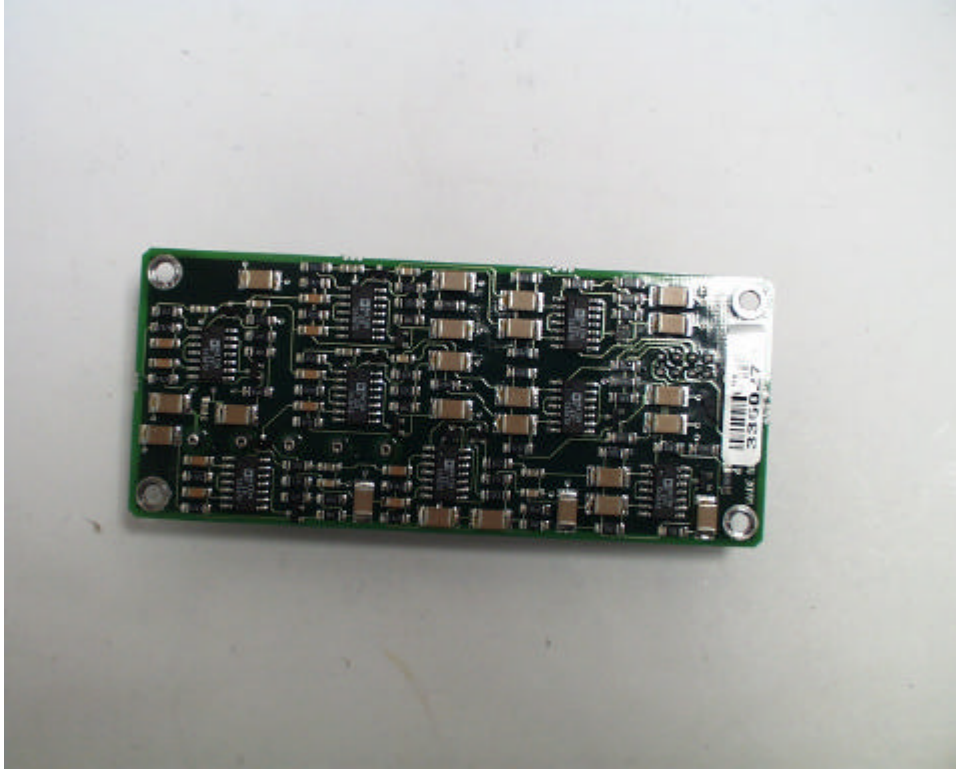


Internal photographs of AI1401.



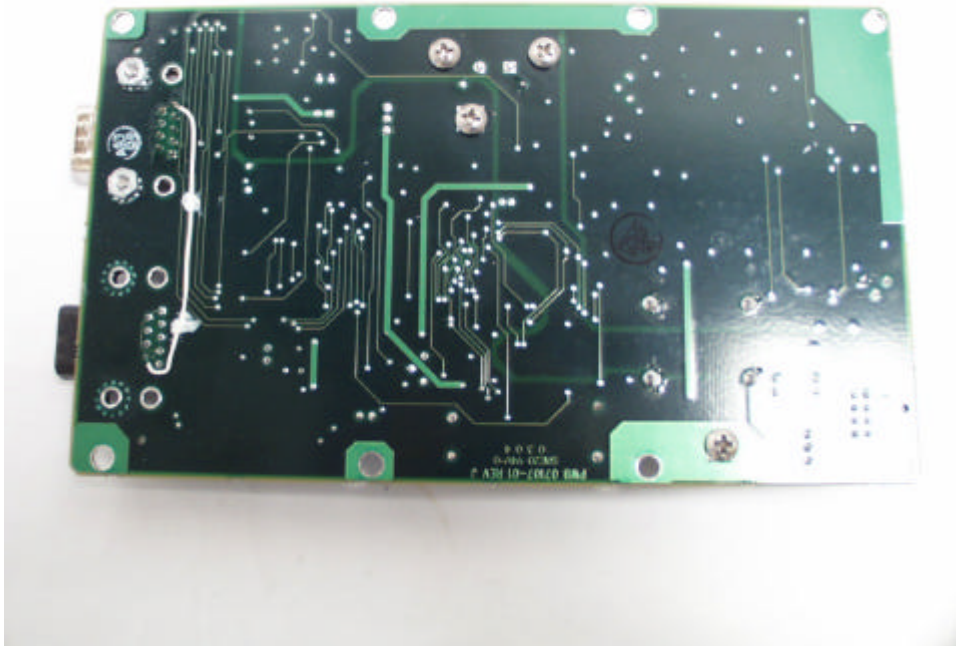
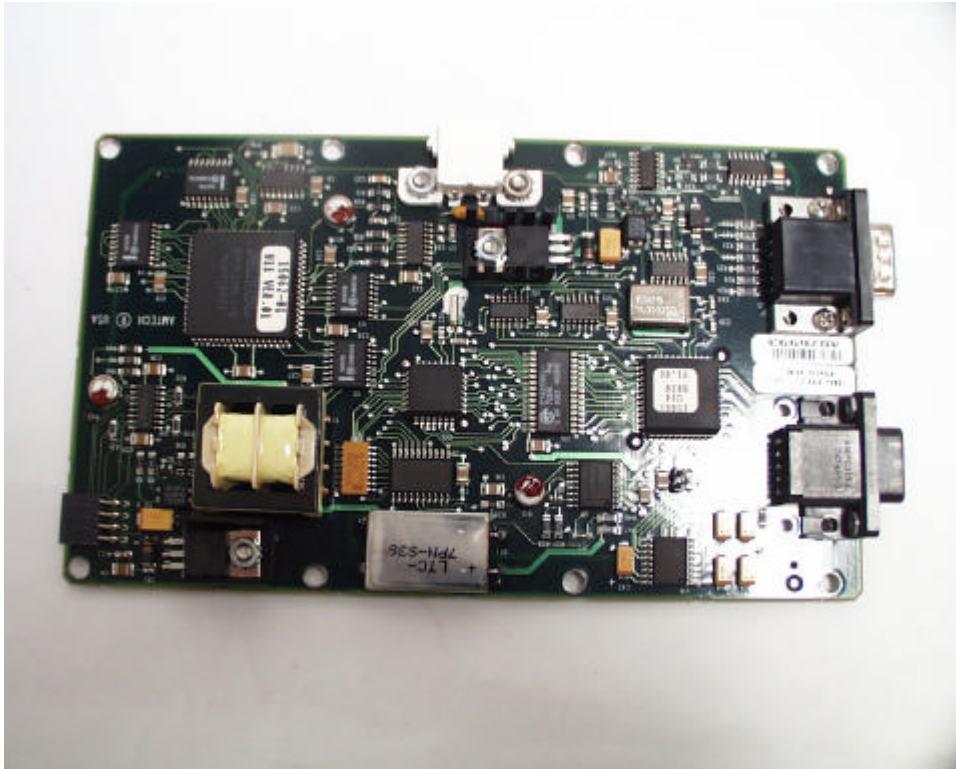
ROGERS LABS, INC.
4405 W. 259th Terrace
Louisburg, KS 66053
Phone/Fax: (913) 837-3214

TRANSCORE AMTECH TECHNOLOGY CENTER
MODEL: AI1401 IC: 1584A-05616
Test #: 041009B FCC ID#: FIH AI140105616
Test to: FCC Parts 2 and 90



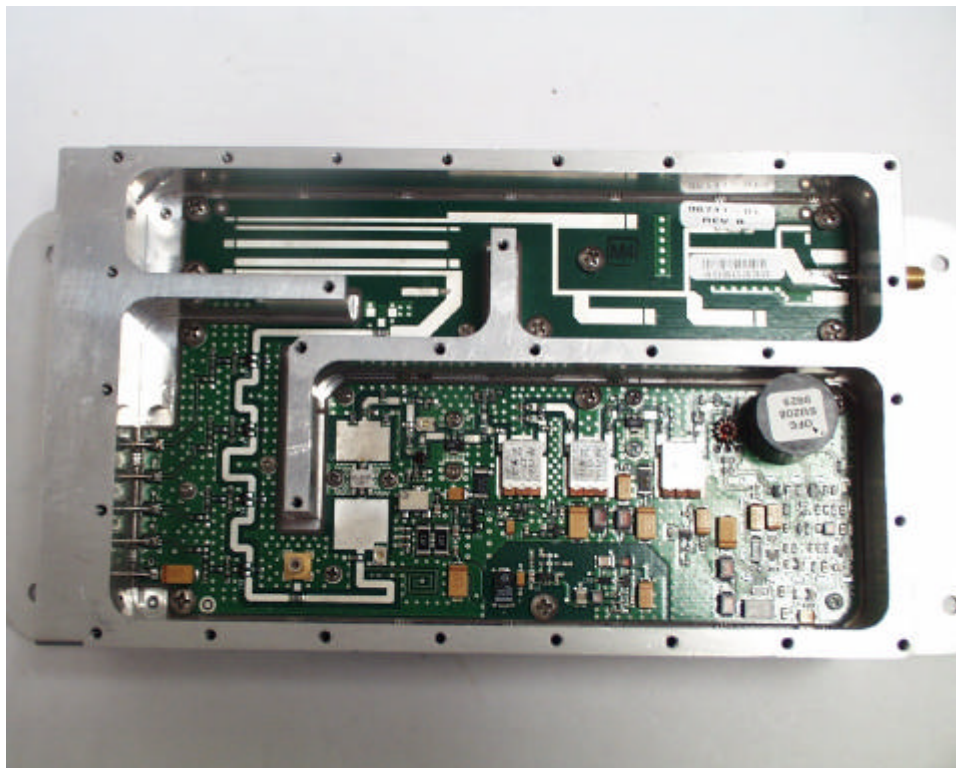
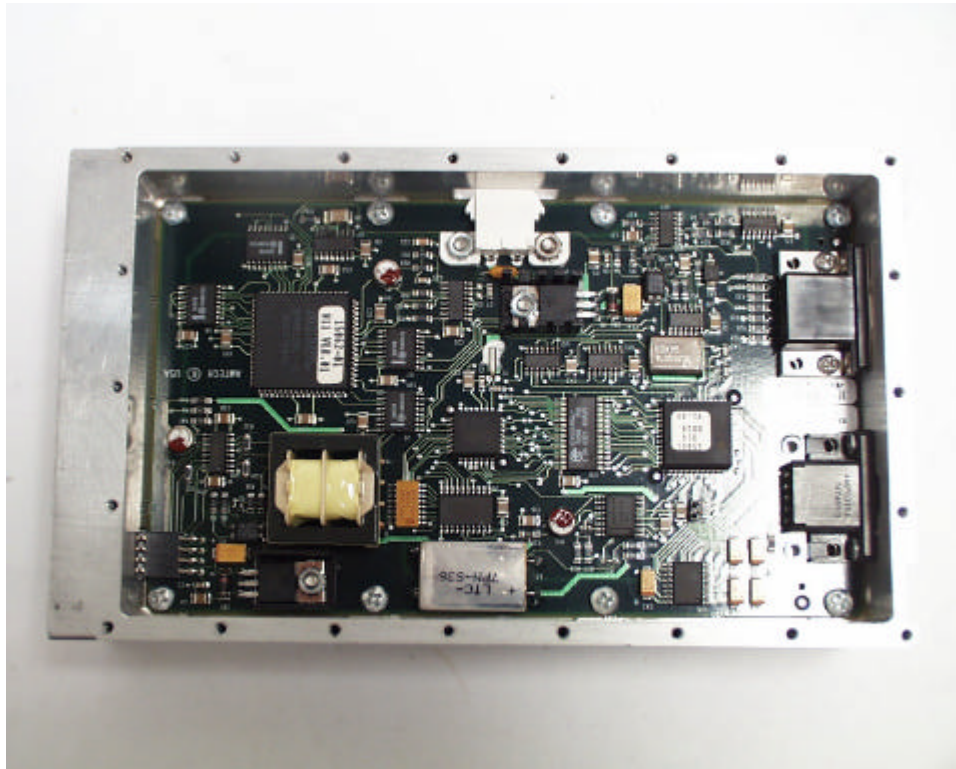
ROGERS LABS, INC.
4405 W. 259th Terrace
Louisburg, KS 66053
Phone/Fax: (913) 837-3214

TRANSCORE AMTECH TECHNOLOGY CENTER
MODEL: AI1401 IC: 1584A-05616
Test #: 041009B FCC ID#: FIH AI140105616
Test to: FCC Parts 2 and 90



ROGERS LABS, INC.
4405 W. 259th Terrace
Louisburg, KS 66053
Phone/Fax: (913) 837-3214

TRANSCORE AMTECH TECHNOLOGY CENTER
MODEL: AI1401 IC: 1584A-05616
Test #: 041009B FCC ID#: FIH AI140105616
Test to: FCC Parts 2 and 90



ROGERS LABS, INC.
4405 W. 259th Terrace
Louisburg, KS 66053
Phone/Fax: (913) 837-3214

TRANSCORE AMTECH TECHNOLOGY CENTER
MODEL: AI1401 IC: 1584A-05616
Test #: 041009B FCC ID#: FIH AI140105616
Test to: FCC Parts 2 and 90