

EXHIBIT 9

INTERNAL PHOTOS

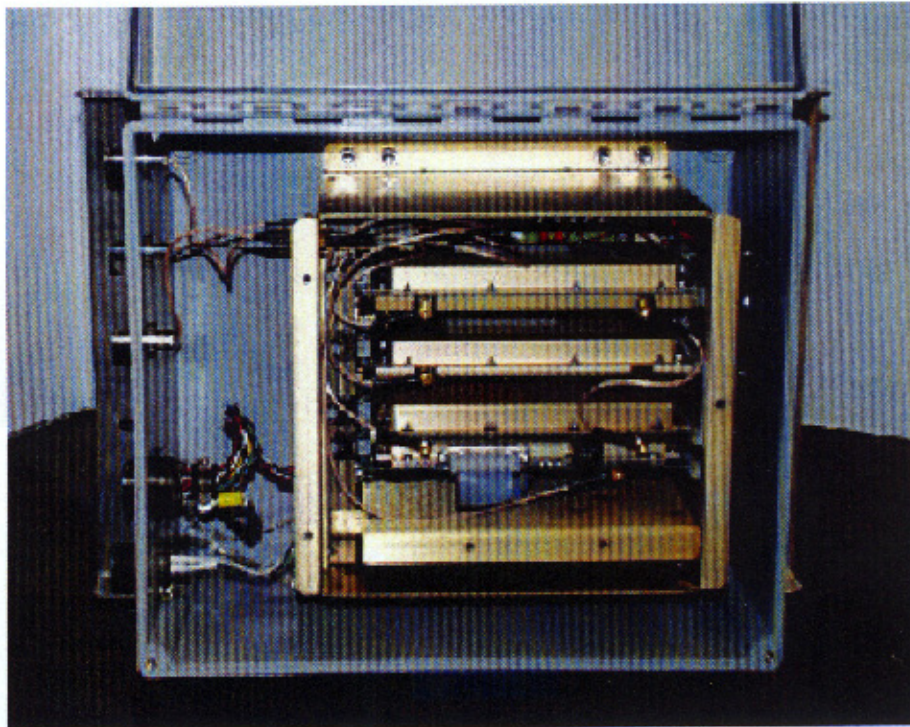
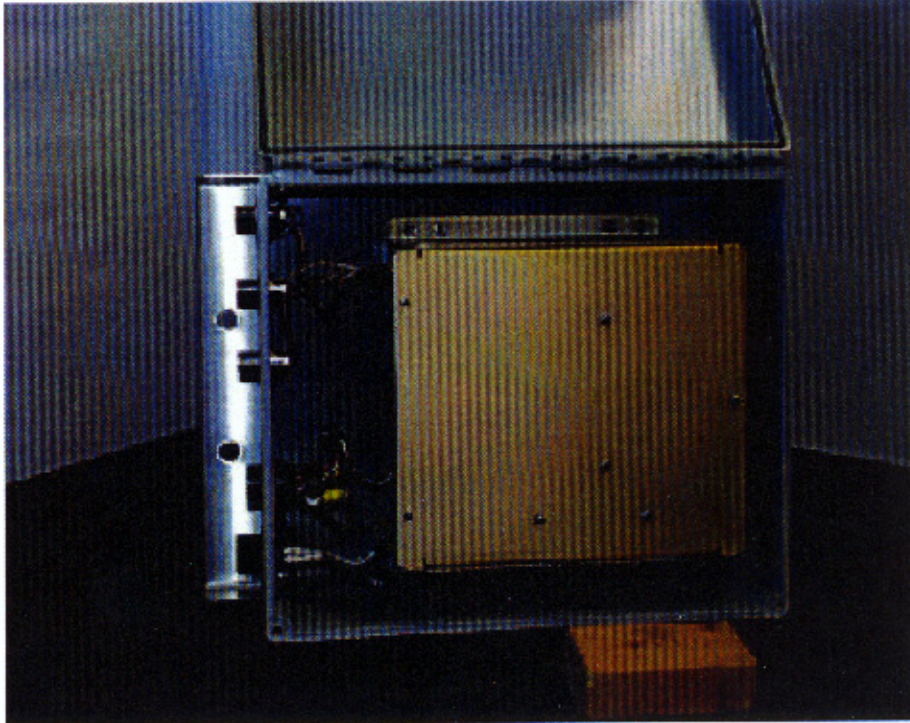
APPLICANT NAME:

Intermec Technologies Corporation
Amtech Systems Division

FCC ID:

FIH261105395-03

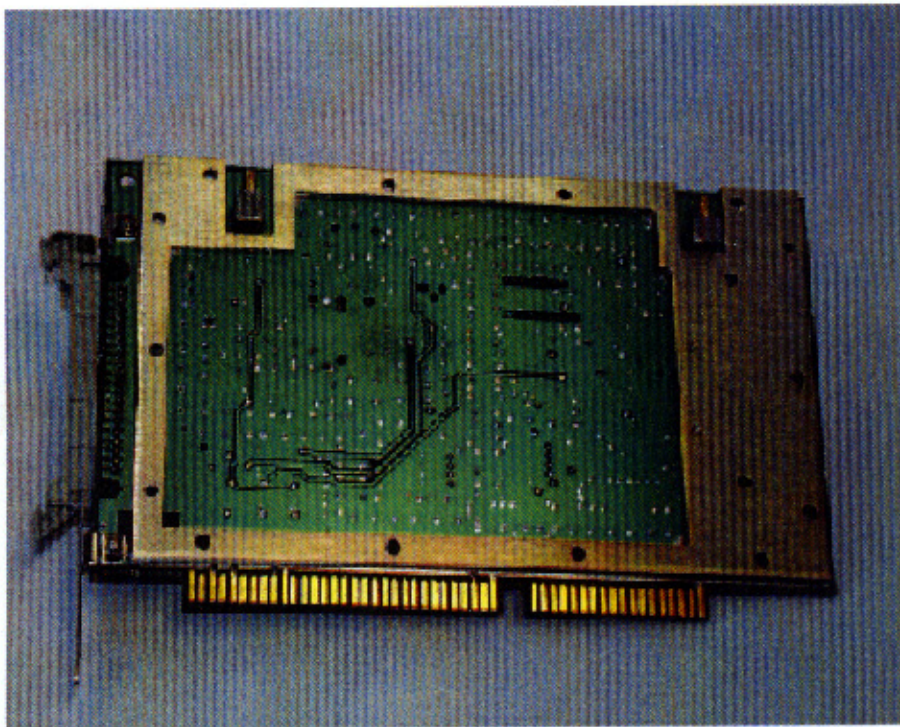
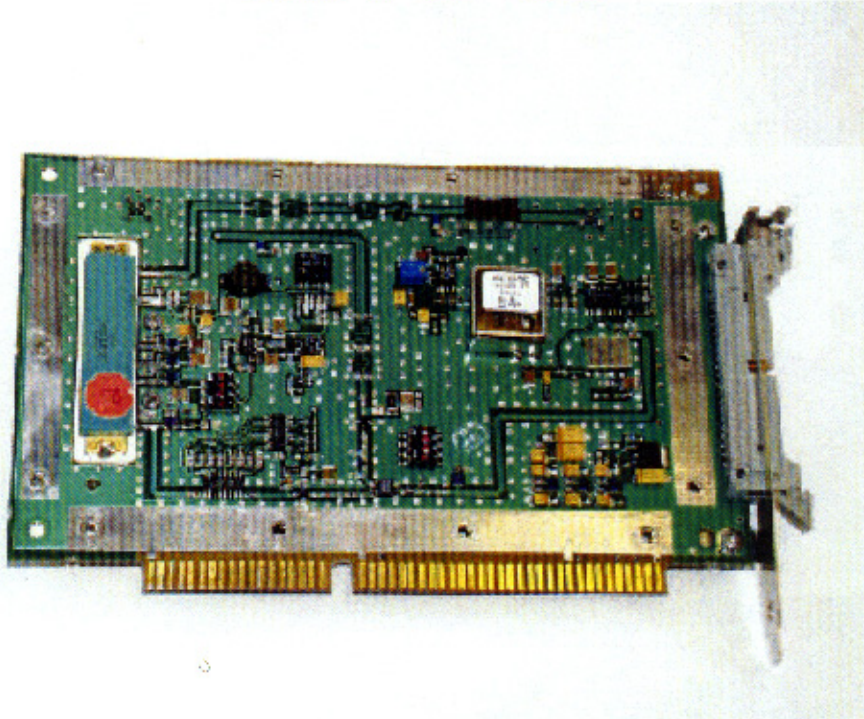
INTERMEC TECHNOLOGIES, CORPORATION
AMTECH SYSTEMS DIVISION
Model: ALLEGRO RF MODULE
Photos Inside of Case



ROGERS LABS, INC.
4405 W. 259th Terrace
Louisburg, KS 66053
Phone/Fax: (913) 837-3214

INTERMEC TECHNOLOGIES CORPORATION AMTECH SYSTEMS DIVISION
MODEL: ALLEGRO RF MODULE
Test #: 990511-3 FCC ID#: F1H 261105392-03
Test to: FCC Parts 2 and 90

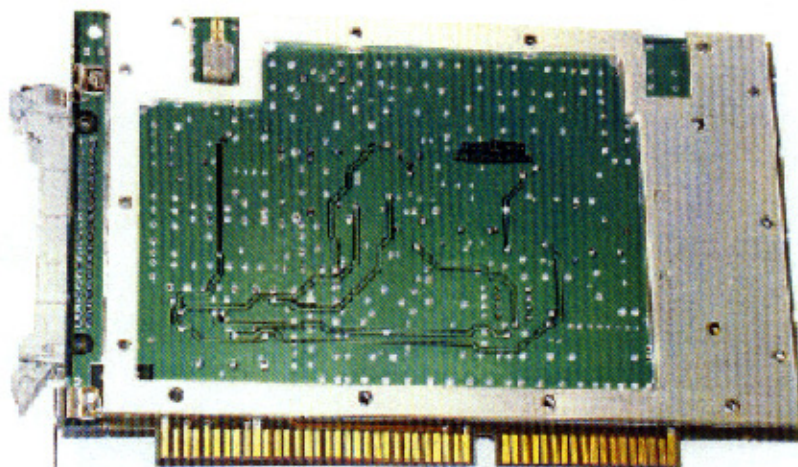
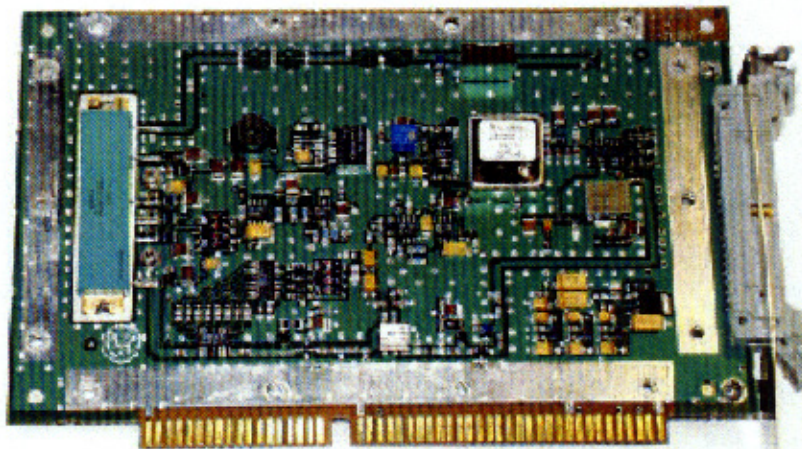
INTERMEC TECHNOLOGIES, CORPORATION
AMTECH SYSTEMS DIVISION
Model: ALLEGRO RF MODULE
Photos RF P.C. Board



ROGERS LABS, INC.
4405 W. 259th Terrace
Louisburg, KS 66053
Phone/Fax: (913) 837-3214

INTERMEC TECHNOLOGIES CORPORATION AMTECH SYSTEMS DIVISION
MODEL: ALLEGRO RF MODULE
Test #: 990511-3 FCC ID#: F1H 261105392-03
Test to: FCC Parts 2 and 90

INTERMEC TECHNOLOGIES, CORPORATION
AMTECH SYSTEMS DIVISION
Model: ALLEGRO RF MODULE
Photos RF P.C. Board



ROGERS LABS, INC.
4405 W. 259th Terrace
Louisburg, KS 66053
Phone/Fax: (913) 837-3214

INTERMEC TECHNOLOGIES CORPORATION AMTECH SYSTEMS DIVISION
MODEL: ALLEGRO RF MODULE
Test #: 990511-3 FCC ID#: F1H 261105392-03
Test to: FCC Parts 2 and 90