

EXHIBIT 6

TEST REPORT

APPLICANT NAME:

Intermec Technologies Corporation
Amtech Systems Division

FCC ID:

FIH261105293-02

Test Report For Application of Certification

For

INTERMEC TECHNOLOGIES CORPORATION
AMTECH SYSTEMS DIVISION
8600 Jefferson Street, NE
Albuquerque, NM 87113
Phone: (505) 856-8054

MODEL: ALLEGRO RF MODULE
IT2611-002
LMS Transmitter

FREQUENCY: 902.25-903.75 MHz (CW)
910-921.5 MHz (CW)
912.75-918.75 MHz (MOD)
FCC ID: FIH 261105293-02

Test Date: May 11, 1999

Certifying Engineer: *Scot D Rogers*
Scot D. Rogers
ROGERS LABS, INC.
4405 W. 259th Terrace
Louisburg, KS 66053
Phone: (913) 837-3214
FAX: (913) 837-3214

This report shall not be reproduced except in full, without the written approval of the laboratory. This report must not be used by the client to claim product endorsement by NVLAP or any agency of the U.S. Government.

TABLE OF CONTENTS

FORWARD:	3
LIST OF TEST EQUIPMENT	3
2.1033(C) APPLICATION FOR CERTIFICATION	4
2.1046 RF POWER OUTPUT	5
<u>Measurements Required:</u>	5
<u>Test Arrangement:</u>	5
<u>Results:</u>	5
2.1047 MODULATION CHARACTERISTICS	9
<u>Measurements Required:</u>	9
<u>Test Arrangement:</u>	9
<u>Results:</u>	10
2.1049 OCCUPIED BANDWIDTH	10
<u>Measurements Required:</u>	10
<u>Test Arrangement:</u>	10
<u>Results:</u>	10
2.1051 SPURIOUS EMISSIONS AT ANTENNA TERMINALS	12
<u>Measurements Required:</u>	12
<u>Test Arrangement:</u>	12
<u>Results:</u>	14
2.1053 FIELD STRENGTH OF SPURIOUS RADIATION	14
<u>Measurements Required:</u>	14
<u>Test Arrangement:</u>	14
Radiated (8 Highest Emissions)	16
<u>Results:</u>	16
2.1055 FREQUENCY STABILITY	17
<u>Measurements Required:</u>	17
<u>Test Arrangement:</u>	17
<u>Results:</u>	18
APPENDIX	19

FORWARD:

In accordance with the Federal Communications Code of Federal Regulations, dated October 1, 1998, Part 2 Subpart J, Paragraphs 2.907, 2.911, 2.913, 2.925, 2.926, 2.1031 through 2.1057; 90.201 through 90.217, 90.350 through 90.363; and Report and Order FCC 98-58 the following is submitted:

List of Test Equipment

A Hewlett Packard 8591EM and or 8562A Spectrum Analyzer was used as the measuring device for the emissions testing. The analyzer settings used are described in the following table. Refer to Appendix for a complete list of Test Equipment.

HP 8591EM SPECTRUM ANALYZER SETTINGS		
CONDUCTED EMISSIONS:		
RBW	AVG. BW	DETECTOR FUNCTION
9 kHz	30 kHz	Peak/Quasi Peak
RADIATED EMISSIONS (30 - 1000 MHz):		
RBW	AVG. BW	DETECTOR FUNCTION
120 kHz	300 kHz	Peak/Quasi Peak
HP 8562A SPECTRUM ANALYZER SETTINGS		
RADIATED EMISSIONS (1 - 40 GHz):		
RBW	AVG. BW	DETECTOR FUNCTION
1 MHz	1 MHz	Peak/Average
ANTENNA CONDUCTED EMISSIONS:		
RBW	AVG. BW	DETECTOR FUNCTION
100 kHz	300 kHz	Peak

2.1033(c) Application for Certification

1. Manufacturer: INTERMEC TECHNOLOGIES CORPORATION
Amtech Systems Division
8600 Jefferson Street, NE
Albuquerque, NM 87113
2. Identification: Model: IT2611-002
FCC I.D.: FIH 261105293-02
3. Refer to Installation and Operating Instruction Manual.
4. Emission Type:
Continuous Wave Emission Designator. NON
Modulated Signal Emission Designator. 1M8L1D
5. Frequency Range:
CW 902.25-903.75
CW 910-921.5
MOD 912.75-918.75
6. Operating Power Level:
1 Watt. Maximum power output is factory set and may be attenuated in 1-dB steps to a minimum of 10 mW.
7. Max P_o:
1 Watt per channel.
8. Power into final amplifier:
+12 Vdc @ 2.0 amps (24 Watts)
9. Tune Up Procedure: Refer to Exhibits.
10. Refer to Exhibits for function of semiconductors and other active devices.
11. Refer to Exhibit for FCC ID Label.
12. Refer to Appendix for photographs of equipment.
13. Refer to Exhibit for details of modulation techniques.

2.1046 RF Power Output**Measurements Required:**

Measurements shall be made to establish the radio frequency power delivered by the transmitter into the standard output termination. The power output shall be monitored and recorded and no adjustment shall be made to the transmitter after the test has begun, except as noted below:

If the power output is adjustable, measurements shall be made for the highest and lowest power levels.

Test Arrangement:

The r.f. power output was measured at the antenna terminals by replacing the antenna with a spectrum analyzer, 6dB Attenuator and cable (with 0.5 dB loss in the cable). The spectrum analyzer had impedance of 50Ω to match the impedance of the standard antenna. A HP 8591EM Spectrum Analyzer was used to measure the r.f. power at the antenna port. The data was taken in dBm and converted to watts as shown in the following Table. Refer to Figures 1 through 6 showing the output power of the transmitter. Data taken per Paragraph 2.1046(a) and applicable parts of Part 90.

P_{dBm} = power in dB above 1 milliwatt.

Milliwatts = $10^{(P_{dBm}/10)}$

Watts = (Milliwatts) (0.001) (W/mW)

Results:**0 dB ATTENUATION**

FREQUENCY	ATTEN	POWER	LOSS
903.0	29.8	954.9	0.95
918.75	29.3	851.1	0.85

6 dB ATTENUATION

FREQUENCY	dBm	dB	dBm
903.0	24.1	258.2	0.26
918.75	21.8	151.3	0.15

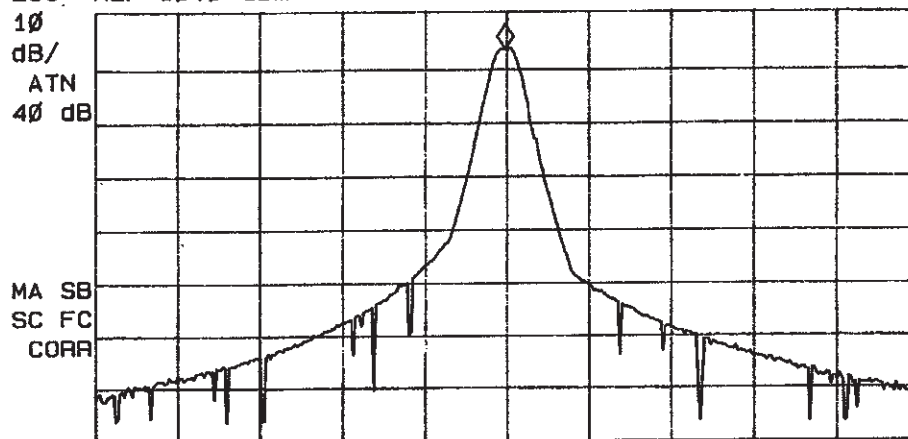
15 dB ATTENUATION

FREQUENCY	dBm	dB	dBm
903.0	14.8	30.2	0.03
918.75	11.1	12.8	0.01

IF BANDWIDTH
100 KHz

ACTV DET: PEAK
MEAS DET: PEAK QP AVG
MKR 902.988 MHz
23.32 dBm

LOG REF 30.0 dBm



CENTER 903.000 MHz

#IF BW 100 KHz

AVG BW 30 KHz

SPAN 5.000 MHz

SWP 20.0 msec

Figure 1 0dB Attenuation @ 903.0 MHz

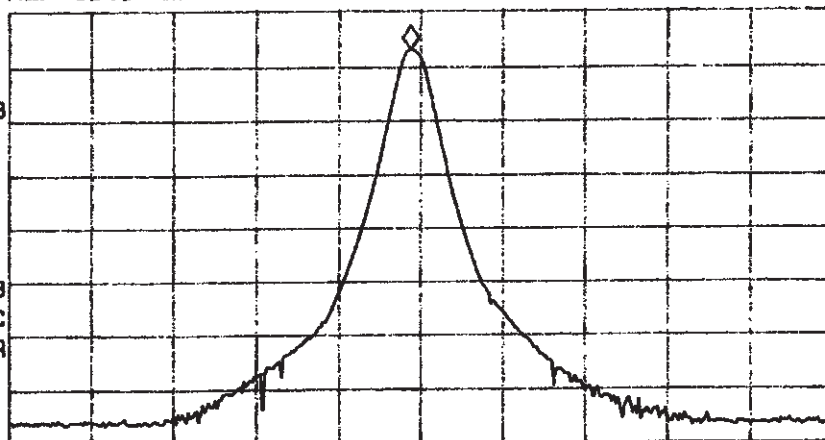
CENTER
918.750 MHz

ACTV DET: PEAK
MEAS DET: PEAK QP AVG
MKR 918.688 MHz
22.83 dBm

LOG REF 30.0 dBm

10
dB/
ATN
40 dB

MA SB
SC FC
CORR



CENTER 918.750 MHz

#IF BW 100 kHz

AVG BW 30 kHz

SPAN 5.000 MHz

SWP 20.0 msec

Figure 2 0dB Attenuation @ 918.75 MHz

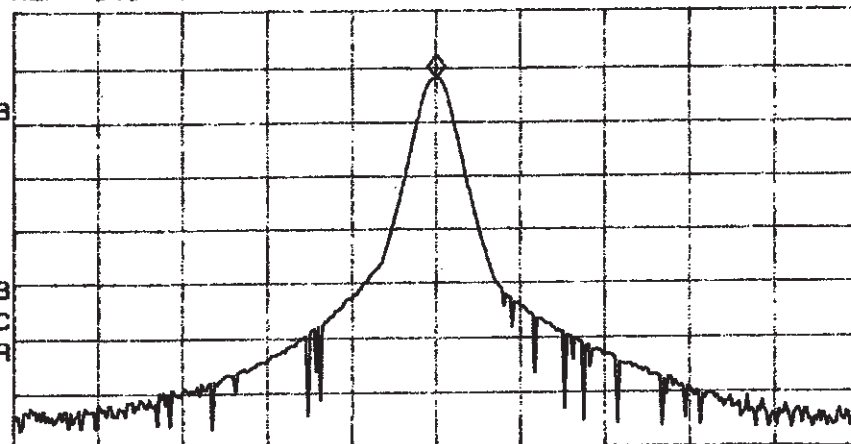
CENTER
903.000 MHz

ACTV DET: PEAK
MEAS DET: PEAK QP AVG
MKR 903.000 MHz
17.62 dBm

LOG REF 30.0 dBm

10
dB/
ATN
40 dB

MA SB
SC FC
CORR



CENTER 903.000 MHz

#IF BW 100 kHz

AVG BW 30 kHz

SPAN 5.000 MHz

SWP 20.0 msec

Figure 3 6dB Attenuation @ 903.0 MHz

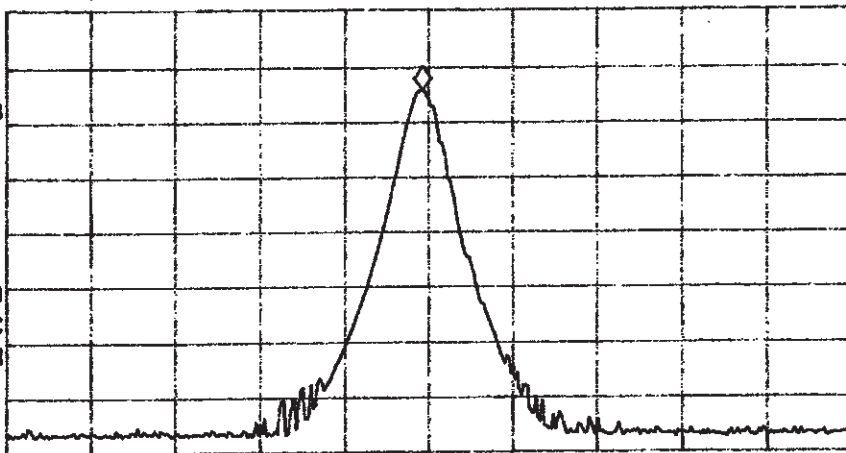
CENTER
918.750 MHz

ACTV DET: PEAK
MEAS DET: PEAK QP AVG
MKR 918.713 MHz
15.33 dBm

LOG REF 30.0 dBm

10
dB/
ATN
40 dB

MA SB
SC FC
CORR



CENTER 918.750 MHz

#IF BW 100 kHz

AVG BW 30 kHz

SPAN 5.000 MHz

SWP 20.0 msec

Figure 4 6dB Attenuation @ 918.75 MHz

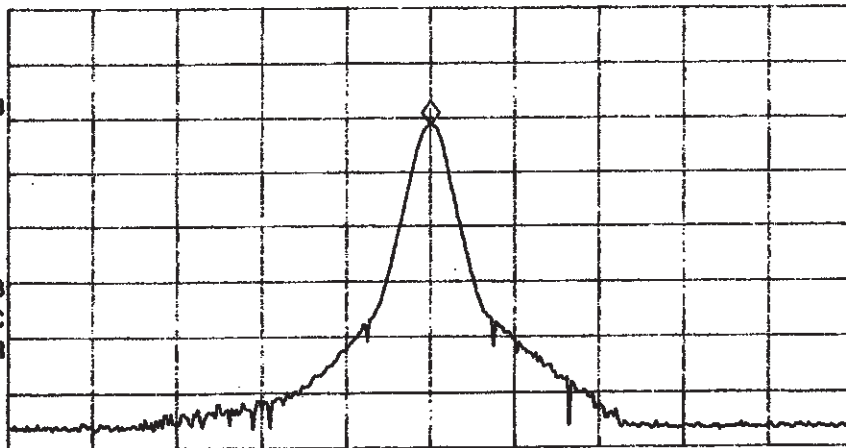
CENTER
903.000 MHz

ACTV DET: PEAK
MEAS DET: PEAK QP AVG
MKR 903.000 MHz
8.31 dBm

LOG REF 30.0 dBm

10
dB/
ATN
40 dB

MA SB
SC FC
CORR



CENTER 903.000 MHz

#IF BW 100 kHz

AVG BW 30 kHz

SPAN 5.000 MHz

SWP 20.0 msec

Figure 5 15dB Attenuation @ 903.0 MHz

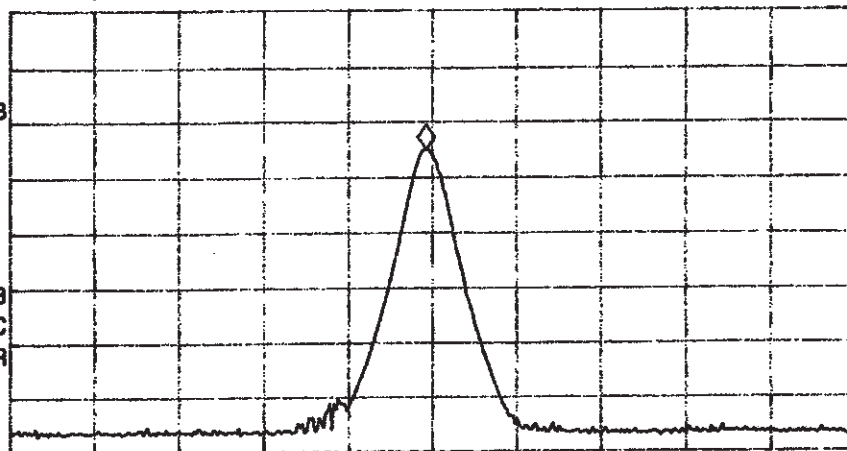
CENTER
918.750 MHz

ACTV DET: PEAK
MEAS DET: PEAK QP AVG
MKR 918.713 MHz
4.65 dBm

LOG REF 30.0 dBm

10
dB/
ATN
40 dB

MA SB
SC FC
CORR



CENTER 918.750 MHz

#IF BW 100 kHz

AVG BW 30 kHz

SPAN 5.000 MHz

SWP 20.0 msec

Figure 6 15dB Attenuation @ 918.75 MHz

The specifications of Paragraph 2.1046(a) and 90.205 are met. There are no deviations to the specifications.

2.1047 Modulation Characteristics

Measurements Required:

A curve or equivalent data that shows that the equipment will meet the modulation requirements of the rules under which the equipment is to be licensed shall be submitted.

Test Arrangement:



The r.f. output was coupled to a HP 8591EM Spectrum Analyzer. The spectrum analyzer was used to observe the r.f. spectrum with the transmitter operating in its normal mode.

Results:

The transmitter operates in two modes continuous wave (CW) mode and modulated mode. The signal is modulated at 300 K baud with Manchester-encoded data. Both signals are turned on and off at a rate of 285 Hz to yield a 97% duty cycle. The ON/OFF modulation ensures that the two channels are never fully enabled at the same time. Specifications of Paragraphs 2.1047 and 90.211 are met. There are no deviations to the specifications.

2.1049 Occupied Bandwidth**Measurements Required:**

The occupied bandwidth, that is the frequency bandwidth such that below its lower and above its upper frequency limits, the mean powers radiated are equal to 0.5 percent of the total mean power radiated by a given emission.

Test Arrangement:**Results:**

	Channel 1	Channel 2
CW	903.0	350
CW	918.75	338
MOD	918.75	1838

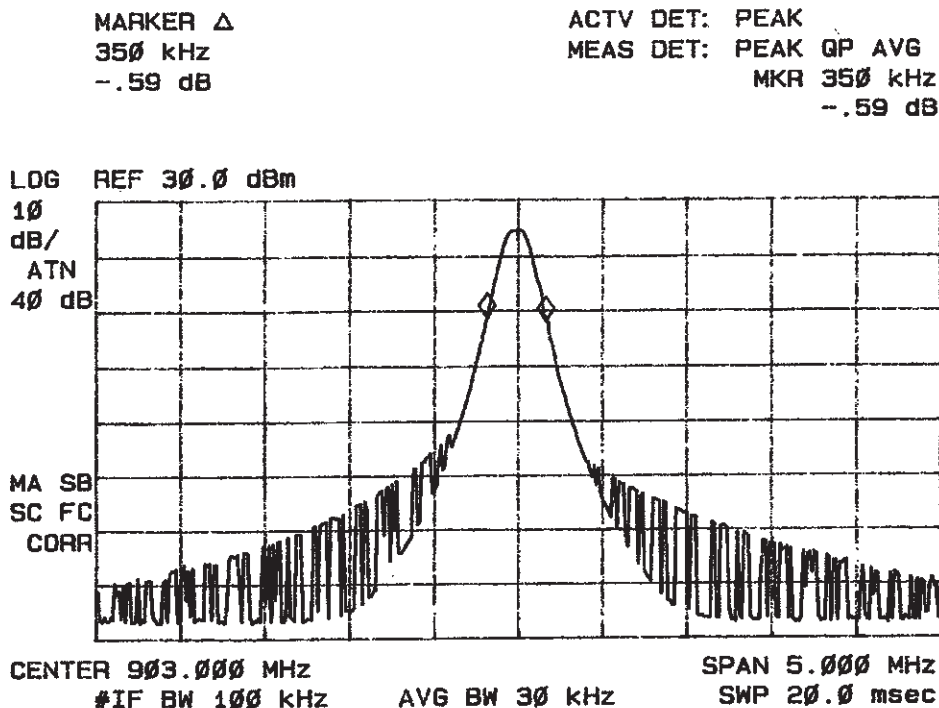


Figure 7 Occupied Bandwidth CW Mode 903 MHz

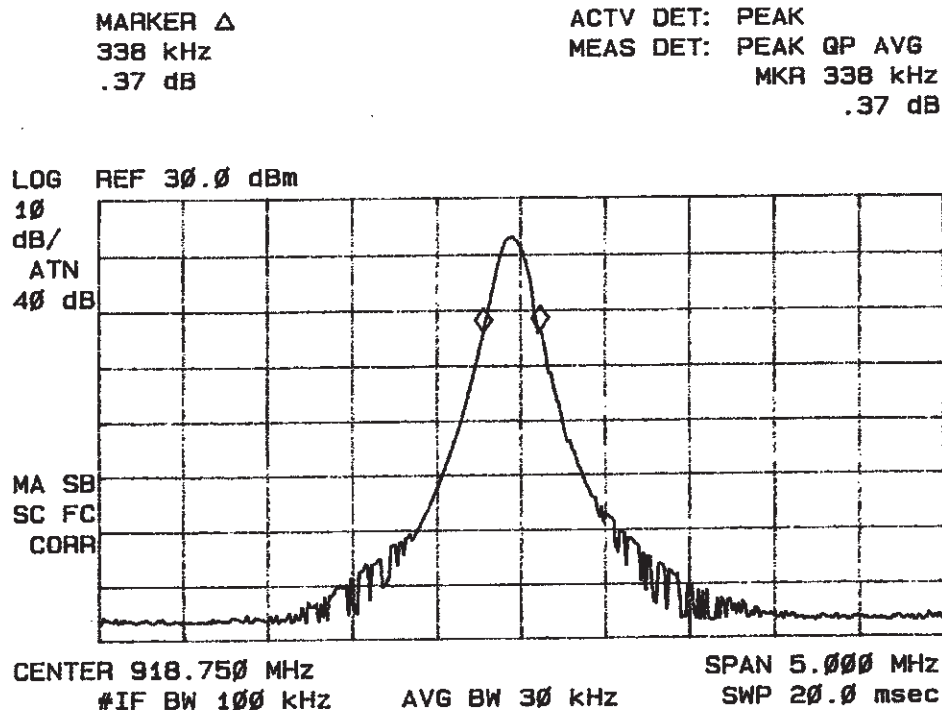
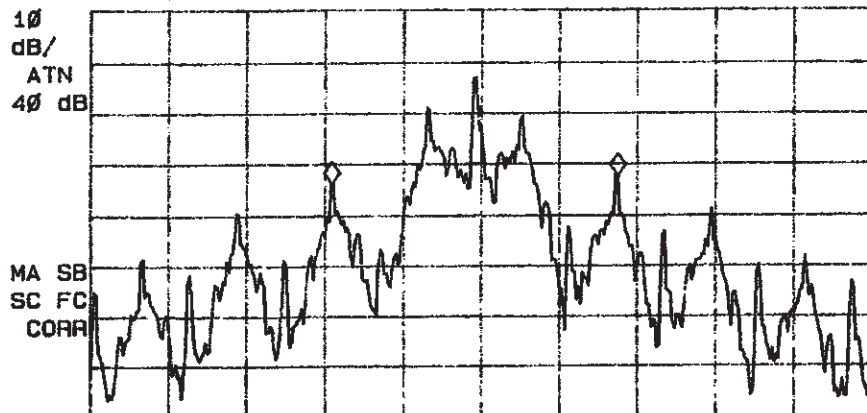


Figure 8 Occupied Bandwidth CW Mode 918.75 MHz

MARKER Δ
1.838 MHz
1.49 dB

ACTV DET: PEAK
MEAS DET: PEAK QP AVG
MKR 1.838 MHz
1.49 dB

LOG REF 30.0 dBm



CENTER 918.750 MHz SPAN 5.000 MHz
#IF BW 10 kHz AVG BW 10 kHz SWP 150 msec

Figure 9 Occupied Bandwidth Modulated 918.75 MHz

Requirements of 2.1049 and applicable parts of Paragraph 90 are met. There are no deviations to the specifications.

2.1051 Spurious Emissions at Antenna Terminals

Measurements Required:

The radio frequency voltage or power generated within the equipment and appearing on a spurious frequency shall be checked at the equipment output terminals when properly loaded with a suitable artificial antenna.

Test Arrangement:



The r.f. output was coupled to a HP 8562A Spectrum Analyzer. The spectrum analyzer was used to observe the r.f. spectrum with the transmitter operating in its normal mode. The frequency spectrum from 0 to 10 GHz was observed and plots produced of the frequency spectrum. Figures 10 and 11 represent data for the ALLEGRO RF MODULE. Data taken per 2.1051 and applicable parts of Part 90.

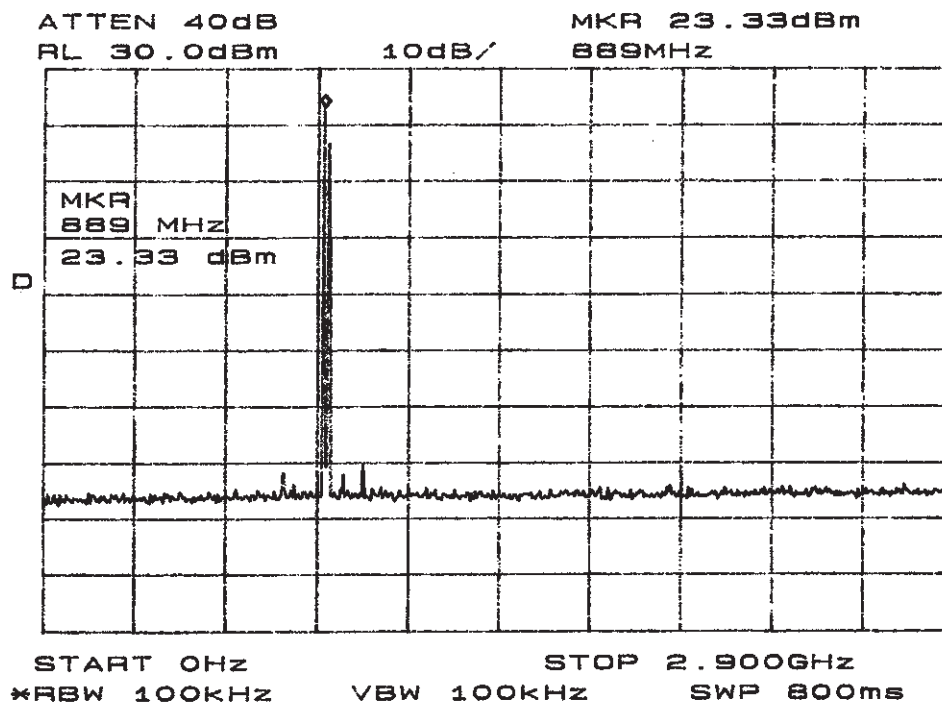


Figure 10 Emissions at Antenna Terminal

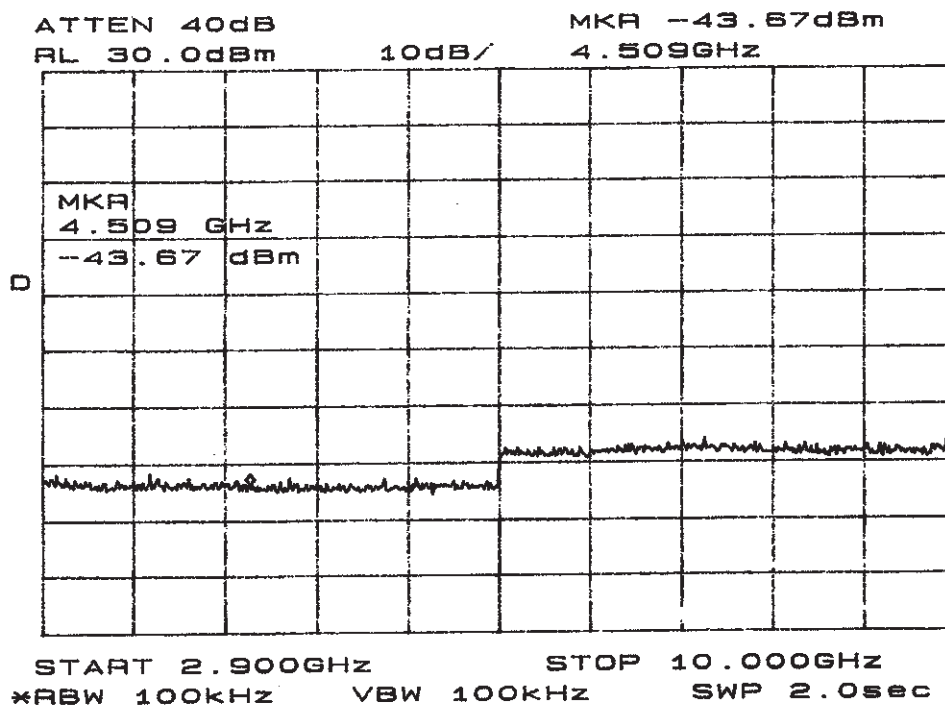


Figure 11 Emissions at Antenna Terminal

Results:

Data taken per 2.1051 and applicable parts of Part 90. Specifications of Paragraphs 2.1051, 2.1057 and 90.211(3) are met. There are no deviations to the specifications.

903.0	1806.0	-73.4
	2709.0	-74.5
	3612.0	-84.7
	4515.0	-85.3
918.75	1837.5	-84.4
	2756.3	-84.9
	3675.0	-85.6
	4593.8	-85.4

2.1053 Field Strength of Spurious Radiation**Measurements Required:**

Measurements shall be made to detect spurious emissions that may be radiated directly from the cabinet, control circuits, power leads, or intermediate circuit elements under normal conditions of installation and operation.

Test Arrangement:

The transmitter was placed on a wooden turntable 0.8 meters above the ground plane and at a distance of 3 meters from the FSM antenna. The antenna port was terminated in to a 50 Ω load. The transmitter was activated and the frequency spectrum was observed. The turntable was rotated through 360 degrees to locate the position registering the highest amplitude emission. The frequency spectrum was then searched for spurious emissions generated from the transmitter and support equipment. The amplitude of each spurious emission was maximized by raising and lowering the FSM antenna, rotating the turntable; and changing antenna polarization between horizontal and vertical before

data was recorded. A Biconilog antenna was used to measure frequencies from 30 to 1000 MHz and/or a log periodic antenna was used for frequencies of 200 MHz to 5 GHz and pyramidal horn antennas were used for frequencies of 5 GHz to 40 GHz. Emission levels were measured and recorded from the spectrum analyzer in dB μ V. This level was then added to the antenna factor less the amplifier gain to calculate the field strength at 3 meters. Data was taken at the ROGERS LABS, INC. 3 meters open area test site (OATS). A description of the test facility is on file with the FCC, Reference: 31040/SIT, 1300F2, dated February 6, 1998. The testing procedure used conforms to the procedures stated in the ANSI 63.4-1992 document.

Calculations made are as follows:

CFS = Calculated Field Strength
FSM = Field Strength Measurement
CFS = FSM + Antenna Factor - Amplifier Gain
CFS = 48.6 + 6.7 - 35
CFS = 20.3

The limit for emissions are defined by the following equations:

Limit = Amplitude of spurious emission must be attenuated by this amount below the level of the fundamental.

Attenuation = 55 + 10 Log₁₀(P_w)
= 55 + 10 Log₁₀(1.0)
= 55 dB

Radiated (8 Highest Emissions)

Frequency (MHz)	FSM Horz. (dBuV)	FSM Vert. (dBuV)	Ant. Factor (dB)	Amp. Gain (dB)	CES Horz. (dBuV/m)	CES Vert. (dBuV/m)	Limit (dBuV/m)
60.0	48.6	63.4	6.7	35	20.3	35.1	40.0
68.0	56.8	59.4	6.7	35	28.5	31.1	40.0
72.0	59.0	61.7	8.0	35	32.0	34.7	40.0
76.1	54.3	58.1	8.0	35	27.3	31.1	40.0
80.0	49.4	51.6	8.9	25	33.3	35.5	40.0
300.7	56.1	60.6	14.7	35	35.8	40.3	46.0
400.9	53.8	59.4	16.4	35	35.2	40.8	46.0
467.7	54.3	58.3	16.9	35	36.2	40.2	46.0

Other emissions present had amplitudes at least 10 dB below the limit.

Results:

Frequency (MHz)	FSM Horz. (dBuV)	FSM Vert. (dBuV)	Ant. Factor (dB)	Amp. Gain (dB)	CES Horz. (dBuV/m)	CES Vert. (dBuV/m)	Limit (dBuV/m)
1806.0	29.5	29.5	26.3	25	30.8	30.8	54.0
2709.0	31.0	31.6	33.4	25	39.4	40.0	54.0
3612.0	31.6	33.5	38.3	25	44.9	46.8	54.0
4515.0	32.3	32.3	42.5	25	49.8	49.8	54.0
1837.5	29.6	29.8	26.3	25	30.9	31.1	54.0
2756.3	29.3	31.1	33.4	25	37.7	39.5	54.0
3675.0	32.8	31.8	38.3	25	46.1	45.1	54.0
4593.8	30.5	30.5	42.5	25	48.0	48.0	54.0
1837.5	29.1	28.8	26.3	25	30.4	30.1	54.0
2756.3	30.0	30.0	33.4	25	38.4	38.4	54.0
3675.0	31.0	31.1	38.3	25	44.3	44.4	54.0
4593.8	30.3	30.5	42.5	25	47.8	48.0	54.0

Specifications of Paragraph 2.1053, 2.1057 and 90.211 are met.
There are no deviations to the specifications.

ROGERS LABS, INC.
4405 W. 259th Terrace
Louisburg, KS 66053
Phone/Fax: (913) 837-3214

INTERMEC TECHNOLOGIES CORPORATION AMTECH SYSTEMS DIVISION
MODEL: ALLEGRO RF MODULE
Test #: 990511-1 FCC ID#: F1H 261105293-02
Test to: FCC Parts 2 and 90

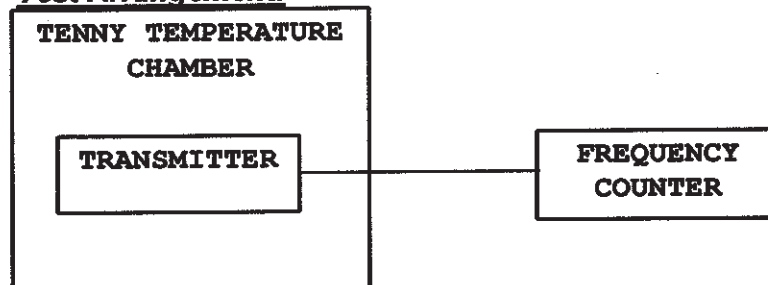
2.1055 Frequency Stability

Measurements Required:

Pursuant to 90.213(a), Note 13, frequency stability testing is not required. However, pursuant to good engineering practices, temperature stability was measured for the operating temperature range of the unit and recorded in the supplemental Appendix.

- (1) Vary primary supply voltage from 85 to 115 percent of the nominal value for other than hand carried battery equipment.
- (2) For hand carried, batteries powered equipment, reduce primary supply voltage to the battery operating end point which shall be specified by the manufacturer.
- (3) The supply voltage shall be measured at the input to the cable normally provided with the equipment, or at the power supply terminals if cables are not normally provided.

Test Arrangement:



The measurement procedure outlined below shall be followed:

Step 1: The transmitter shall be installed in an environmental test chamber whose temperature is controllable. Provision shall be made to measure the frequency of the transmitter.

Step 2: With the transmitter inoperative (power switched "OFF"), the temperature of the test chamber shall be adjusted to +25°C. After a temperature stabilization period of one hour at +25°C, the transmitter shall be switched "ON" with standard test voltage applied.

Step 3: The carrier shall be keyed "ON", and the transmitter shall be operated unmodulated at full r.f. power output at the duty cycle for which it is rated, for duration of at least 5 minutes. The r.f. carrier frequency shall be monitored and measurements shall be recorded.

Step 4: The test procedures outlined in Steps 2 and 3, shall be repeated after stabilizing the transmitter at the environmental temperatures specified.

The frequency stability was measured with variations in the power supply voltage from 85 to 115 percent of the nominal value. An Elgar AC Power Source was used to vary the ac voltage for the power input from 102 Vac to 138 Vac. The frequency was measured and the variation in parts per million was calculated. Data was taken per Paragraphs 2.1055 and 90.213.

Results:

REFER TO EXHIBIT FOR FREQUENCY STABILITY VS TEMP.

Frequency in MHz	85% Voltage	100% Voltage	115% Voltage
903.0	0	0	0
918.75	0	0	0

Specifications of Paragraphs 2.1055 and 90.213 are met.
There are no deviations to the specifications.

APPENDIX

Model: ALLEGRO RF MODULE

1. Photos of Conducted Emissions Test Set Up
2. Photos of Radiated Emissions Test Set U
3. Photos of Case Front and Back
4. Photos Inside of Case
5. Photos RF PC Board
6. Photos FCC ID Label and Location
7. Test Equipment List.
8. Rogers Qualifications.
9. FCC Site Approval Letter.

TEST EQUIPMENT LIST FOR ROGERS LABS, INC.

The equipment is used daily and kept in good calibration and operating condition. Calibration of critical items are checked for accuracy each time used.

List of Test Equipment:Calibration Date:

Scope: Tektronix 2230	2/99
Wattmeter: Bird 43 with Load Bird 8085	2/99
Power Supplies: Sorensen SRL 20-25, DCR 150, DCR 140	2/99
H/V Power Supply: Fluke Model: 408B (SN: 573)	2/99
R.F. Generator: Boonton 102F	2/99
R.F. Generator: HP 606A	2/99
R.F. Generator: HP 8614A	2/99
R.F. Generator: HP 8640B	2/99
Spectrum Analyzer: HP 8562A,	2/99
Mixers: 11517A, 11980A & 11980K	
HP Adapters: 11518, 11519, 11520	
Spectrum Analyzer: HP 8591 EM	6/98
Frequency Counter: Weston 1255	2/99
Frequency Counter: Leader LDC 825	2/99
Antenna: EMCO Log Periodic	9/98
Antenna: BCD 235/BNC Antenna Research	9/98
Antenna: EMCO Dipole Set 3121C	2/99
Antenna: C.D. B-100	2/99
Antenna: Solar 9229-1 & 9230-1	2/99
Antenna: EMCO 6509	2/99
Microline Freq. Meter: Model 27B	2/99
Dana Modulation Meter: Model 9008	2/99
Audio Oscillator: H.P. 200CD	2/99
R.F. Power Amp 65W Model: 470-A-1000	9/97
R.F. Power Amp 50W M185- 10-500	9/97
R.F. PreAmp CPPA-102	9/97
Shielded Room 5 M x 3 M x 3.0 M (100 dB Integrity)	
LISN 50 μ Hy/50 ohm/0.1 μ f	9/98
LISN Compliance Eng. 240/20	2/99
SCS Power Amp Model: 2350A	2/99
Power Amp A.R. Model: 10W 1000M7	2/99
Power Amp EIN Model: A300	1/99
Linear Amp Mini Circuits: ZHL-1A (2 Units)	2/99
Combiner Unit Mini Circuits: ZSC-2-1 (2 Units)	2/99
ELGAR Model: 1751	2/99
ELGAR Model: TG 704A-3D	2/99
ELGAR Model: 400SD (PB)	2/99
ESD Test Set 2000i	10/95
Fast Transient Burst Generator Model: EFT/B-100	10/95
Current Probe: Singer CP-105	8/97
Current Probe: Solar 9108-1N	8/97
Field Intensity Meter: EFM-018	10/95

03/01/99

ROGERS LABS, INC.

4405 W. 259th Terrace

Louisburg, KS 66053

Phone/Fax: (913) 837-3214

INTERMEC TECHNOLOGIES CORPORATION AMTECH SYSTEMS DIVISION

MODEL: ALLEGRO RF MODULE

Test #: 990511-1 FCC ID#: F1H 261105293-02

Test to: FCC Parts 2 and 90

Page 27 of 29

QUALIFICATIONS

Of

SCOT D. ROGERS, ENGINEER**ROGERS LABS, INC.**

Mr. Rogers has approximately 12 years experience in the field of electronics. Six years working in the automated controls industry and 6 years working with the design, development and testing of radio communications and electronic equipment.

POSITIONS HELD:

Systems Engineer:	A/C Controls Mfg. Co., Inc. 6 Years
Electrical Engineer:	Rogers Consulting Labs, Inc. 5 Years
Electrical Engineer:	Rogers Labs, Inc. Current

EDUCATIONAL BACKGROUND:

- 1) Bachelor of Science Degree in Electrical Engineering from Kansas State University.
- 2) Bachelor of Science Degree in Business Administration Kansas State University.
- 3) Several Specialized Training courses and seminars pertaining to Microprocessors and Software programming.

Scot D Rogers
Scot D. Rogers

Date

1/11/99

ROGERS LABS, INC.
4405 W. 259th Terrace
Louisburg, KS 66053
Phone/Fax: (913) 837-3214

INTERMEC TECHNOLOGIES CORPORATION AMTECH SYSTEMS DIVISION
MODEL: ALLEGRO RF MODULE
Test #: 990511-1 FCC ID#: FTH 261105293-02
Test to: FCC Parts 2 and 90

Page 28 of 29

FEDERAL COMMUNICATIONS COMMISSION

7435 Oakland Mills Road
Columbia, MD 21046
Telephone: 301-725-1585 (ext-218)
Facsimile: 301-344-2050

February 6, 1998

IN REPLY REFER TO
31040/SIT
1300F2

Rogers Labs, Inc.
4405 West 259th Terrace
Louisburg, KS 66053

Attention: Scot D. Rogers

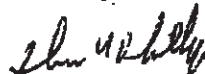
Re: Measurement facility located at above address
(3 and 10 meter site)

Gentlemen:

Your submission of the description of the subject measurement facility has been reviewed and found to be in compliance with the requirements of Section 2.948 of the FCC Rules. The description has, therefore, been placed on file and the name of your organization added to the Commission's list of facilities whose measurement data will be accepted in conjunction with applications for certification or notification under Parts 15 or 18 of the Commission's Rules. Our list will also indicate that the facility complies with the radiated and AC line conducted test site criteria in ANSI C63.4-1992. Please note that this filing must be updated for any changes made to the facility, and at least every three years the data on file must be certified as current.

Per your request, the above mentioned facility has been also added to our list of those who perform these measurement services for the public on a fee basis. This list is updated monthly and is available on the Laboratory's Public Access Link (PAL) at 301-725-1072, and also on the Internet at the FCC Website www.fcc.gov/oet/info/database/testsite/.

Sincerely,



Thomas W. Phillips
Electronics Engineer
Customer Service Branch

ROGERS LABS, INC.
4405 W. 259th Terrace
Louisburg, KS 66053
Phone/Fax: (913) 837-3214

INTERMEC TECHNOLOGIES CORPORATION AMTECH SYSTEMS DIVISION
MODEL: ALLEGRO RF MODULE
Test #: 990511-1 FCC ID#: F1H 261105293-02
Test to: FCC Parts 2 and 90

Page 29 of 29