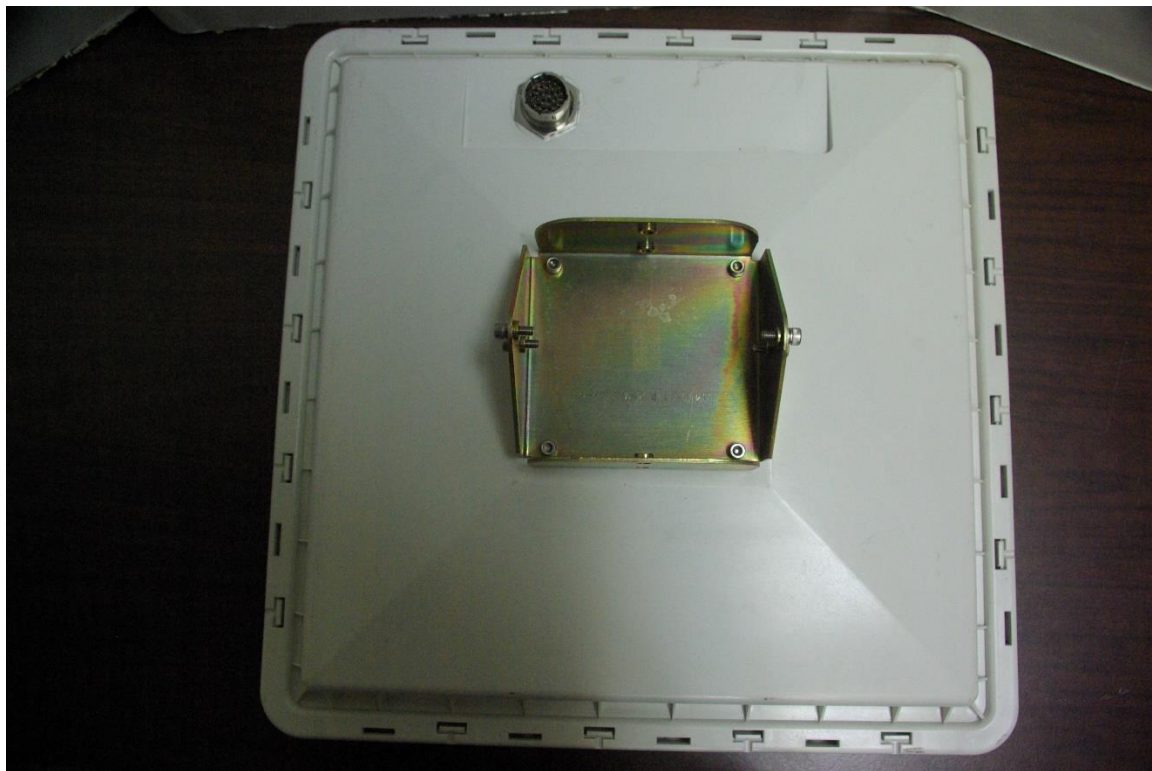


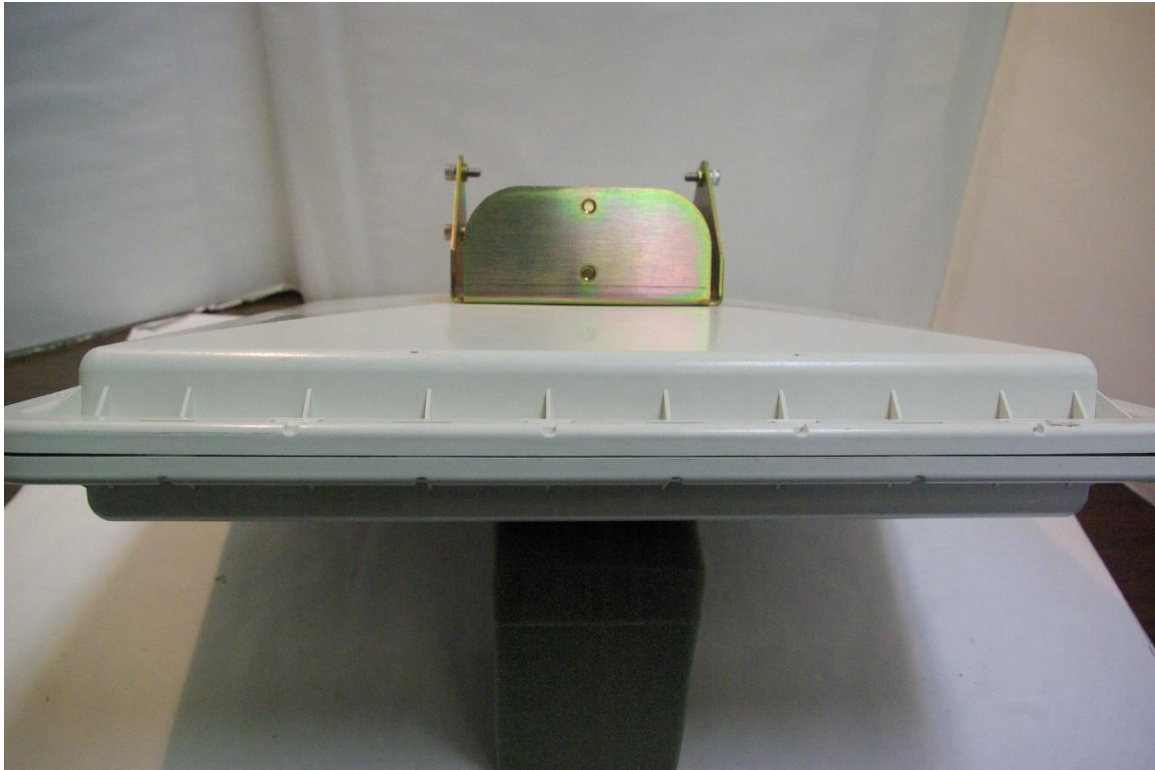
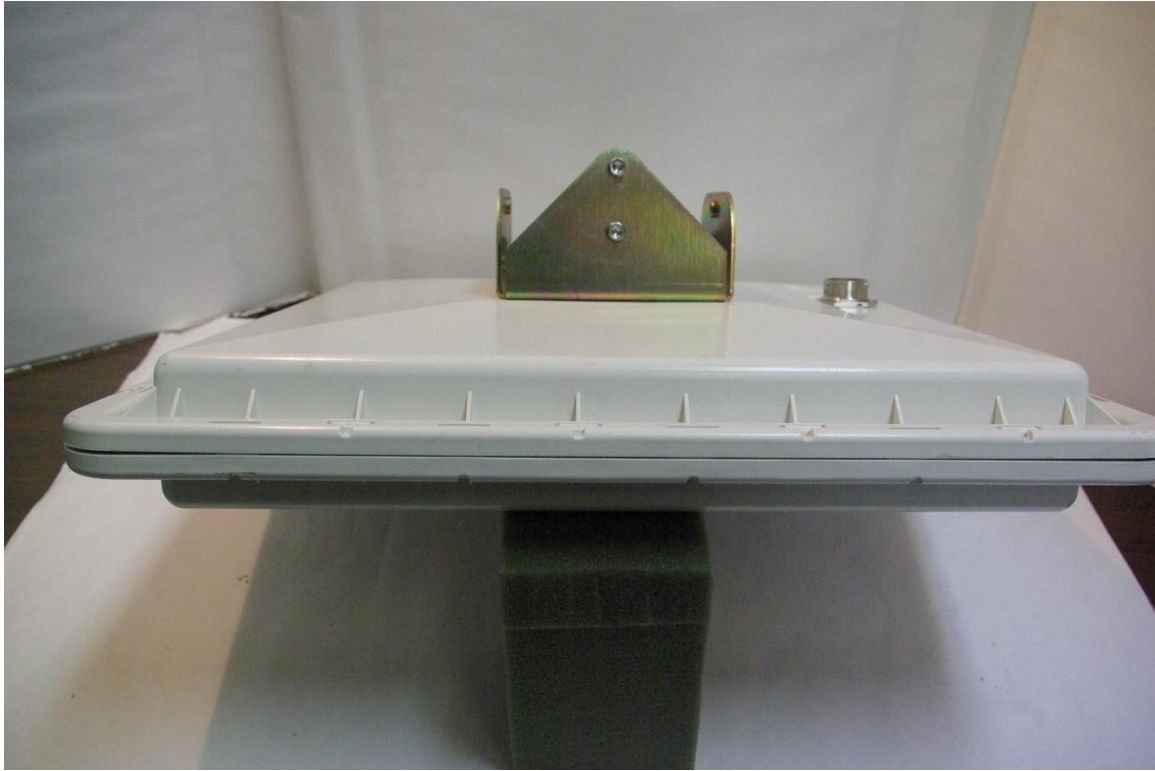
Equipment photographs



Rogers Labs, Inc.
4405 W. 259th Terrace
Louisburg, KS 66053
Phone/Fax: (913) 837-3214
Revision 1

Transcore Amtech Technology Center
Model: E4PART90
Test #: 160622
Test to: 47CFR Parts 2, 90 and RSS-137
File: E4PART90 Short Term Conf ExtPho

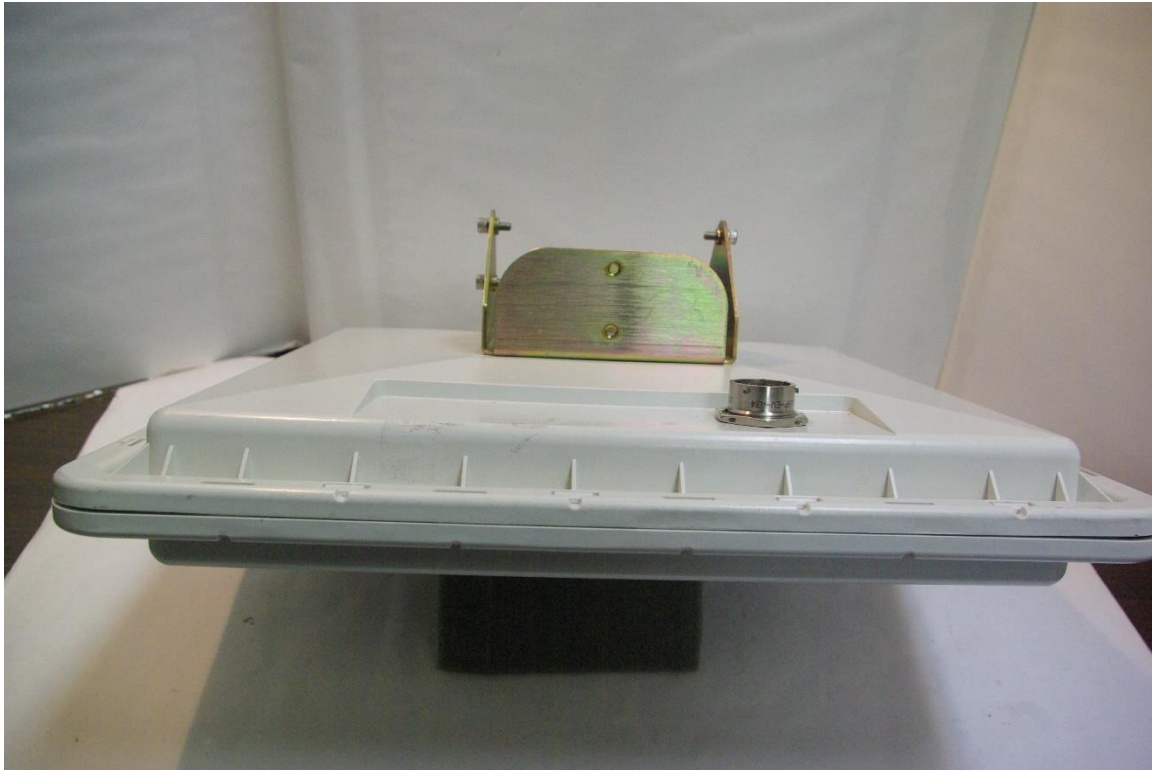
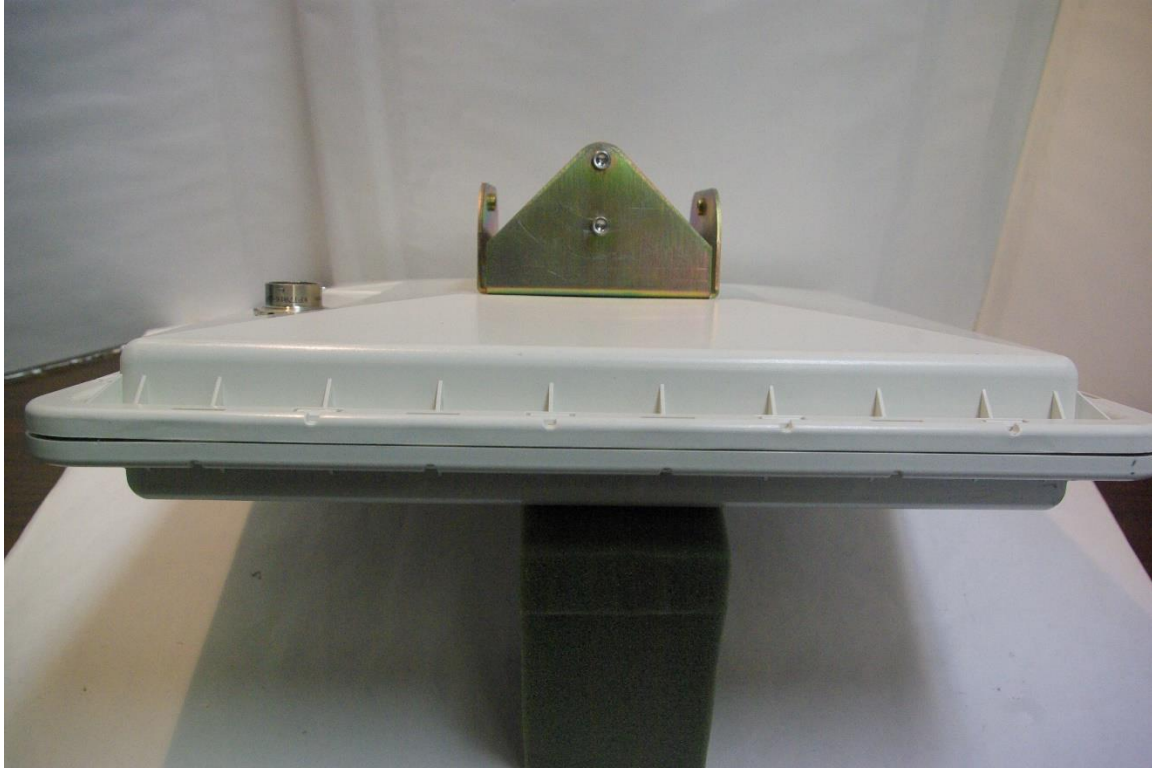
S/N: 601930
FCC ID#: F1H0596465PT90
IC: 1584A-0596465PT90
Date: August 31, 2016
Page 1 of 3



Rogers Labs, Inc.
4405 W. 259th Terrace
Louisburg, KS 66053
Phone/Fax: (913) 837-3214
Revision 1

Transcore Amtech Technology Center
Model: E4PART90
Test #: 160622
Test to: 47CFR Parts 2, 90 and RSS-137
File: E4PART90 Short Term Conf ExtPho

S/N: 601930
FCC ID#: F1H0596465PT90
IC: 1584A-0596465PT90
Date: August 31, 2016
Page 2 of 3



Rogers Labs, Inc.
4405 W. 259th Terrace
Louisburg, KS 66053
Phone/Fax: (913) 837-3214
Revision 1

Transcore Amtech Technology Center
Model: E4PART90
Test #: 160622
Test to: 47CFR Parts 2, 90 and RSS-137
File: E4PART90 Short Term Conf ExtPho

S/N: 601930
FCC ID#: F1H0596465PT90
IC: 1584A-0596465PT90
Date: August 31, 2016
Page 3 of 3