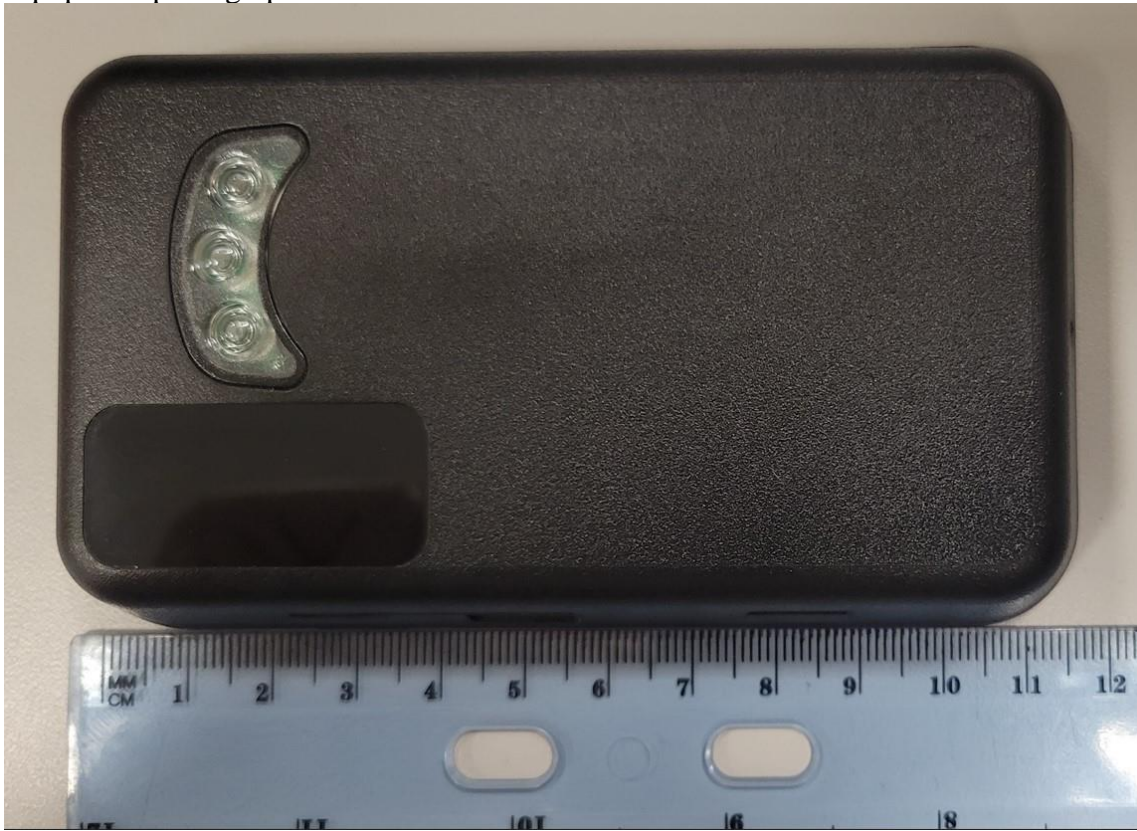


Equipment photographs



Sample Modified for testing



Rogers Labs, Inc.
4405 West 259th Terrace
Louisburg, KS 66053
Phone/Fax: (913) 837-3214
Revision 1

Transcore
HVIN: 051120
Test: 220516
Test to: 47CFR Parts 2, 90 and RSS-137
File: 051120 ExtPho

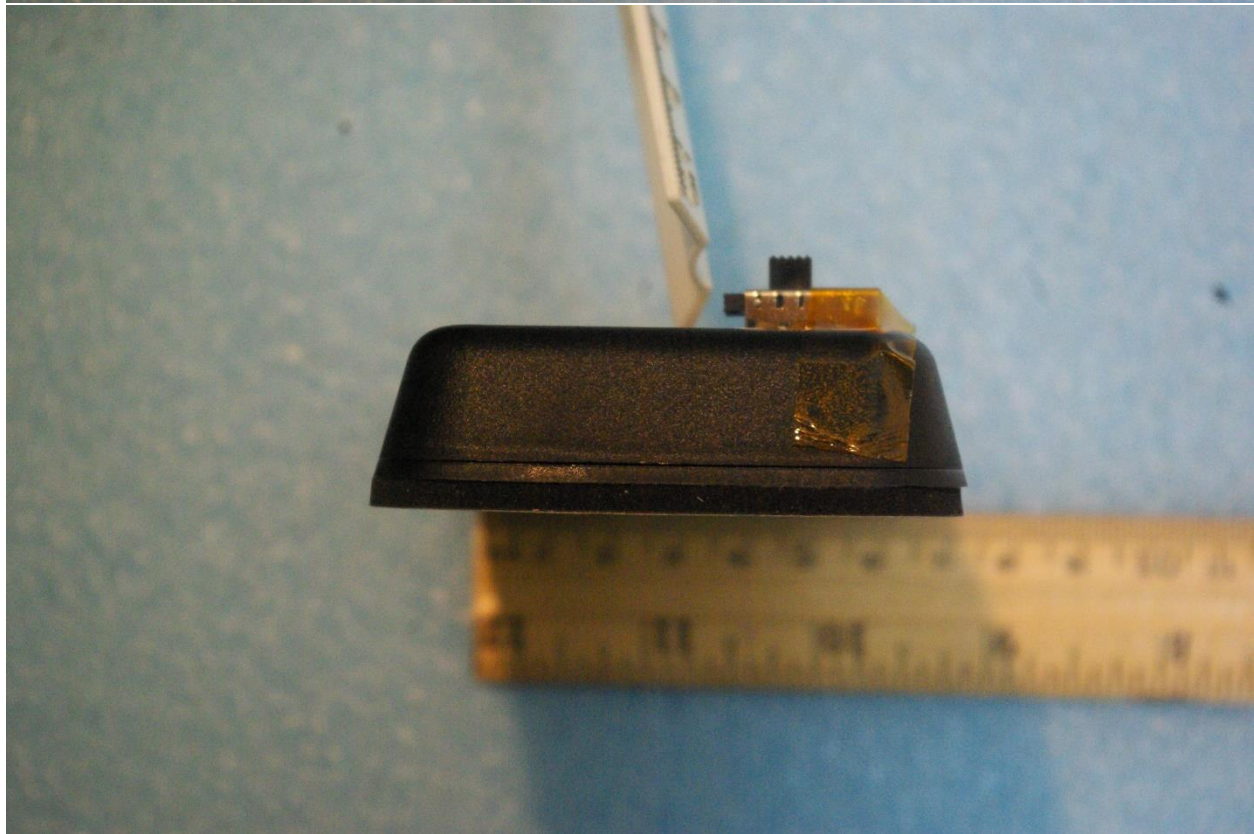
SN: ENG1
FCC ID: FIH051120
IC: 1584A-051120
Date: June 6, 2022
Page 1 of 4



Rogers Labs, Inc.
4405 West 259th Terrace
Louisburg, KS 66053
Phone/Fax: (913) 837-3214
Revision 1

Transcore
HVIN: 051120
Test: 220516
Test to: 47CFR Parts 2, 90 and RSS-137
File: 051120 ExtPho

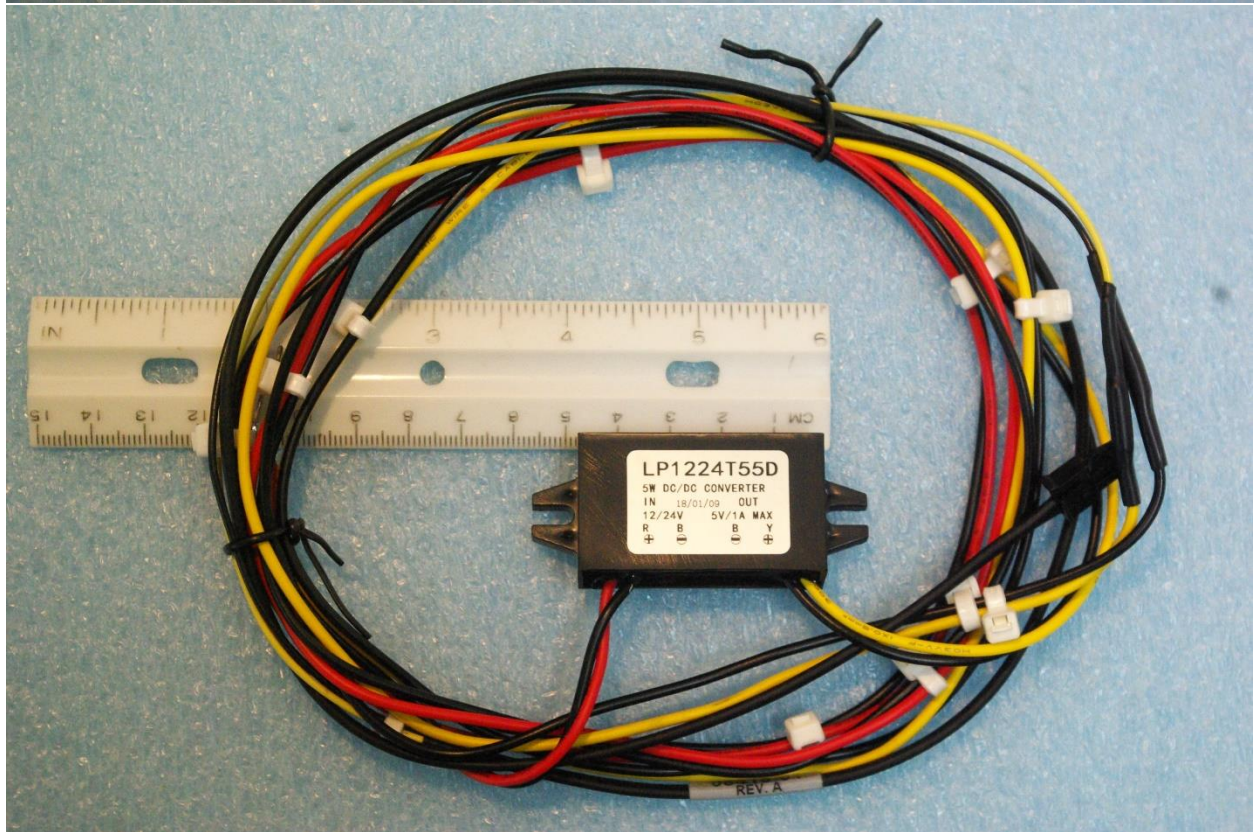
SN: ENG1
FCC ID: FIH051120
IC: 1584A-051120
Date: June 6, 2022
Page 2 of 4



Rogers Labs, Inc.
4405 West 259th Terrace
Louisburg, KS 66053
Phone/Fax: (913) 837-3214
Revision 1

Transcore
HVIN: 051120
Test: 220516
Test to: 47CFR Parts 2, 90 and RSS-137
File: 051120 ExtPho

SN: ENG1
FCC ID: FIH051120
IC: 1584A-051120
Date: June 6, 2022
Page 3 of 4



Rogers Labs, Inc.
4405 West 259th Terrace
Louisburg, KS 66053
Phone/Fax: (913) 837-3214
Revision 1

Transcore
HVIN: 051120
Test: 220516
Test to: 47CFR Parts 2, 90 and RSS-137
File: 051120 ExtPho

SN: ENG1
FCC ID: FIH051120
IC: 1584A-051120
Date: June 6, 2022
Page 4 of 4