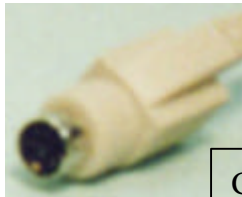
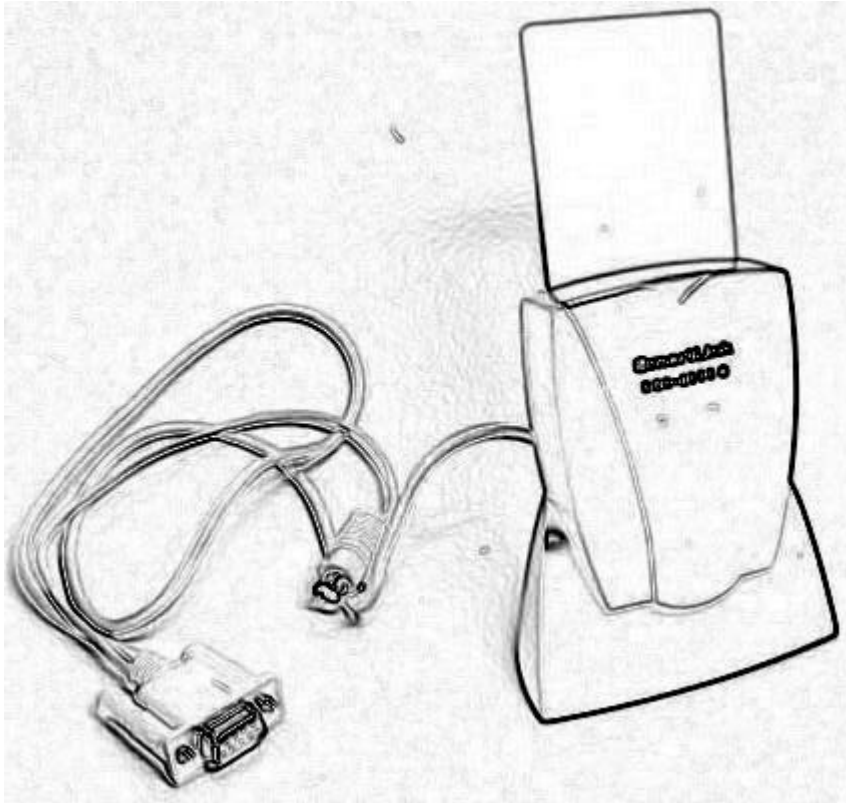


# SmartLink SCR2000E

## **Smart Card Reader**

Installation Manual

## A: Hardware Installation



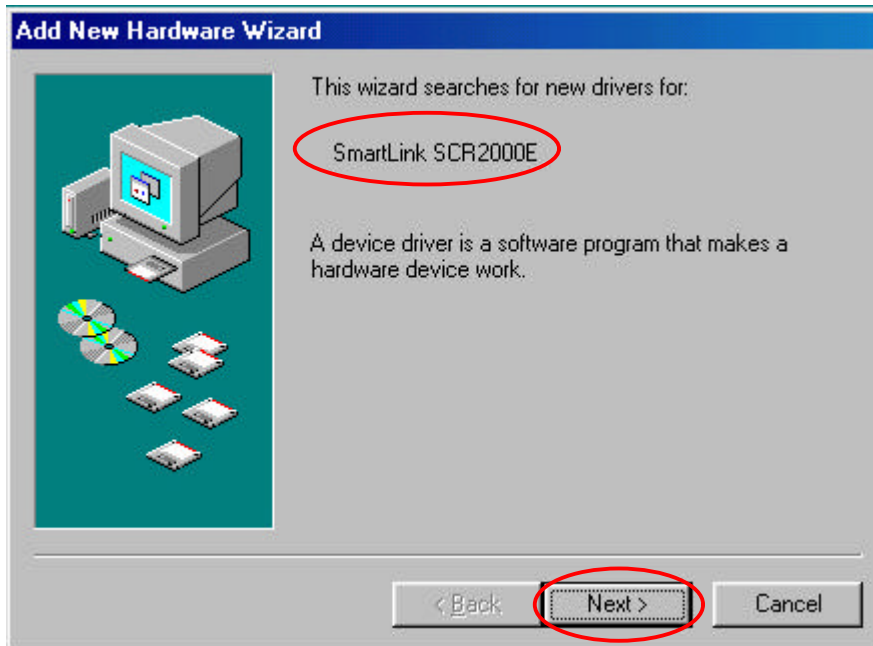
Connect to an available PS/2 connector of your PC.  
Then connect your PS/2 Mouse/Keyboard to the extension slot at the other side of the connector if necessary.



Connect to an available 9-Pin com port.

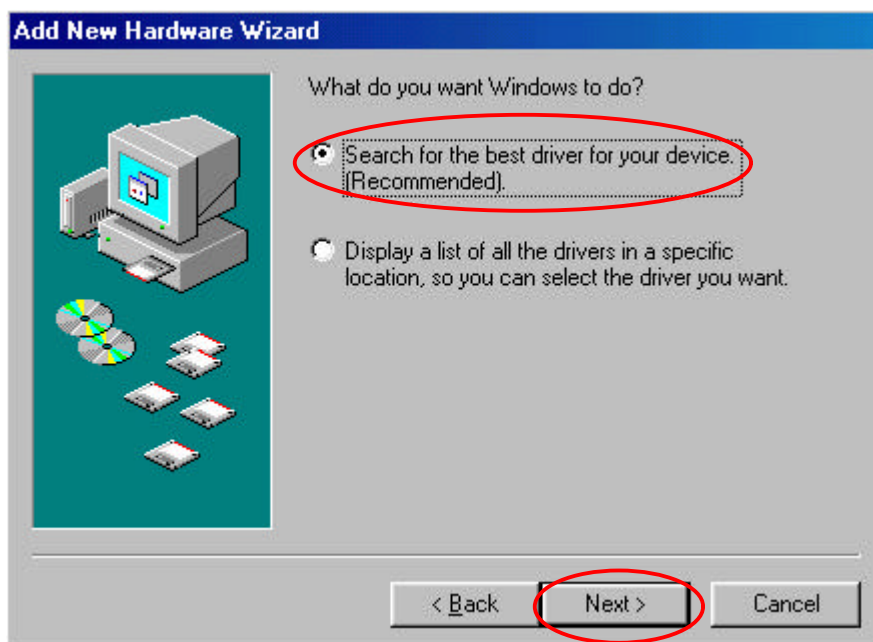
## B. Driver Installation in Windows 98 environment.

B-1



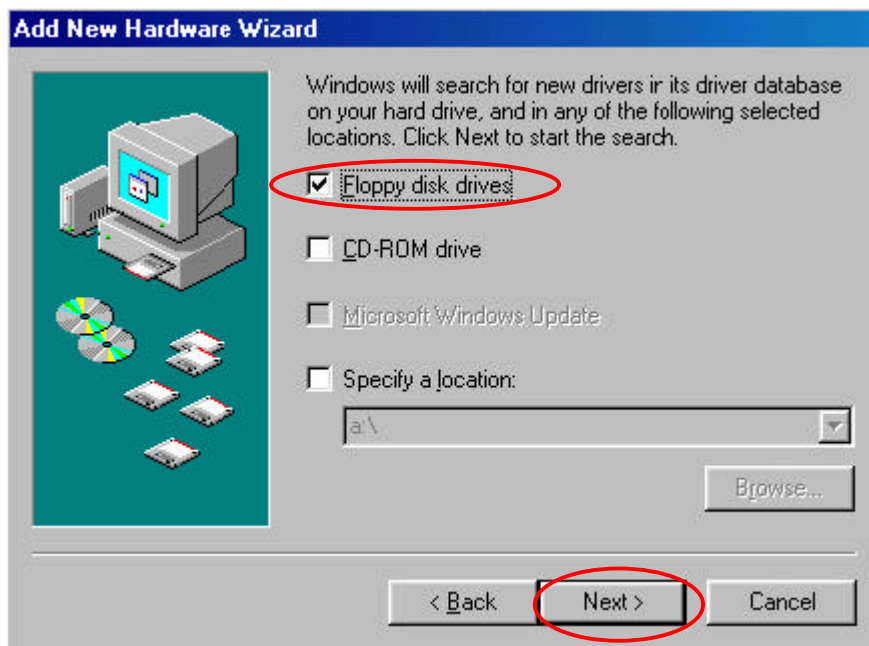
After connecting SmartLink SCR2000E, power your PC on, windows system will find the new hardware and will guide you to install the device driver.  
(As shown in the picture)  
Click “ Next > ” to continue.

B-2



Select “Search for the best driver for your device.” option.  
And let Windows system to install the driver for you.

B-3



Select “Floppy disk drives” option.

And insert the installation diskette into an available Floppy disk drive.

Click “Next >” to continue.

B-4



Windows will find the driver for “SmartLink SCR2000E Smart Card Reader”.

Click “Next >” to continue.



Windows has finished the installation of the driver.  
Click "Finish" to complete.