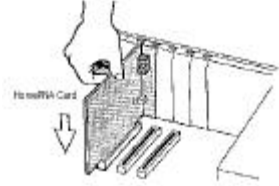


Installation Steps; G

1. Removing the computer cover
2. Inserting the internal HomePNA

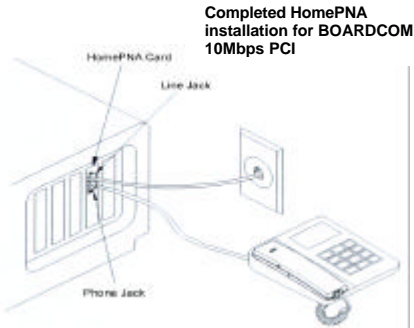


3. Connecting to the telephone line



**BROADCOM 10Mbps
HomePNA PCI CARD**

4. Connecting to your telephone
5. Verifying your connection

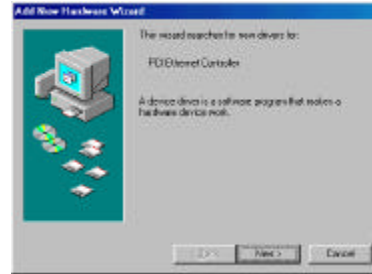


**Completed HomePNA
installation for BOARDCOM
10Mbps PCI**

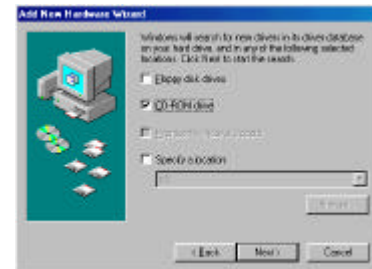
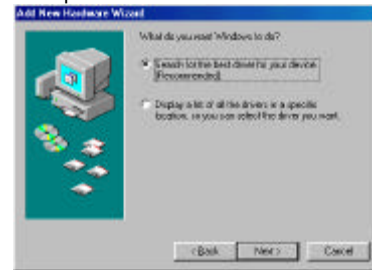
6. Replace the slot cover screw to secure the card in place
7. Close the case
8. Plug in the computer

Windows 98 HomePNA Driver Installation (PnP)

1. Turn on the computer. As Windows 98 starts up, it informs you that it has found new hardware "**PCI Ethernet Controller**" and starts the Update Device Driver Wizard. Click "**Next**".



2. Insert the driver installation diskette or CD disc before continuing with the Update Device Driver Wizard.



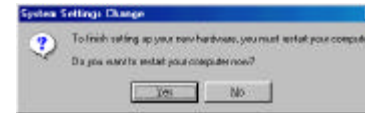
3. Windows found the "**Broadcom iLine 10(tm) Network Adapter**", click "**Next**".



4. Click "**Finish**".



5. Click "**YES**" to restart your computer.



HPE-110

10Mbps HomePNA PCI CARD

**QUICK
INSTALLATION**