

**Copy of marking plate:
Label A**

FCC ID: FHO-L2305



Type No. L2305

KÖLVATTEN

Made in China

Input: 5V DC, 2.5W
Battery input: 2,4V DC (2 x AA HR6 1,2V DC), 0,7W
conforms to :UL Std 2108 Certified to CSA Std :CSA Std C22.2
No 9.0 CAN ICES-005(B)/NMB-005(B)
This device complies with Part 15 of the FCC Rules.
Operation is subject to the following two conditions: (1) this
device may not cause harmful interference, and (2) this
device must accept any interference received, including
interference that may cause undesired operation.
Caution-Replace battery with IKEA LADDA type HR6AA 1.2V
2450mAh.

Sup.No.15621



YYWW

Label B

Caution:

Use only with Class 2 power unit for charging.

Utiliser uniquement avec une alimentation de classe 2 pour recharger.

Usar solo con la unidad de alimentación Clase 2 para recargar.

For wall/ceiling/under-cabinet/shelf mount/ Suitable for Installation in the Storage Area of a Clothes Closet

Pour murs/plafonds/dessous de meubles/étagères

Convient pour une installation dans la zone de rangement d'un placard à vêtements

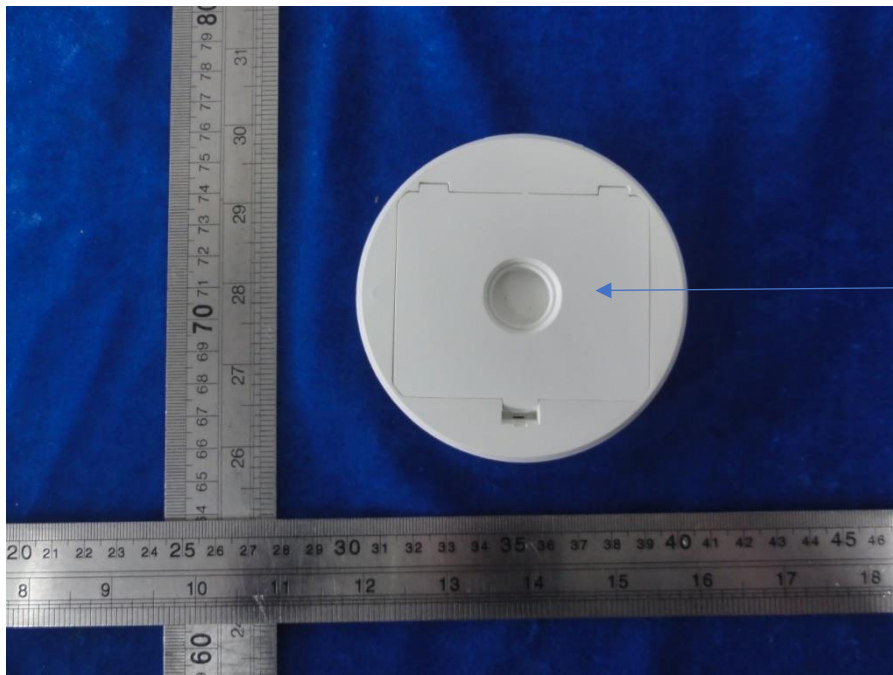
Para montaje en pared/techo/bajo armario/estanterías

Adecuado para instalación en zonas de almacenaje de armario ropero

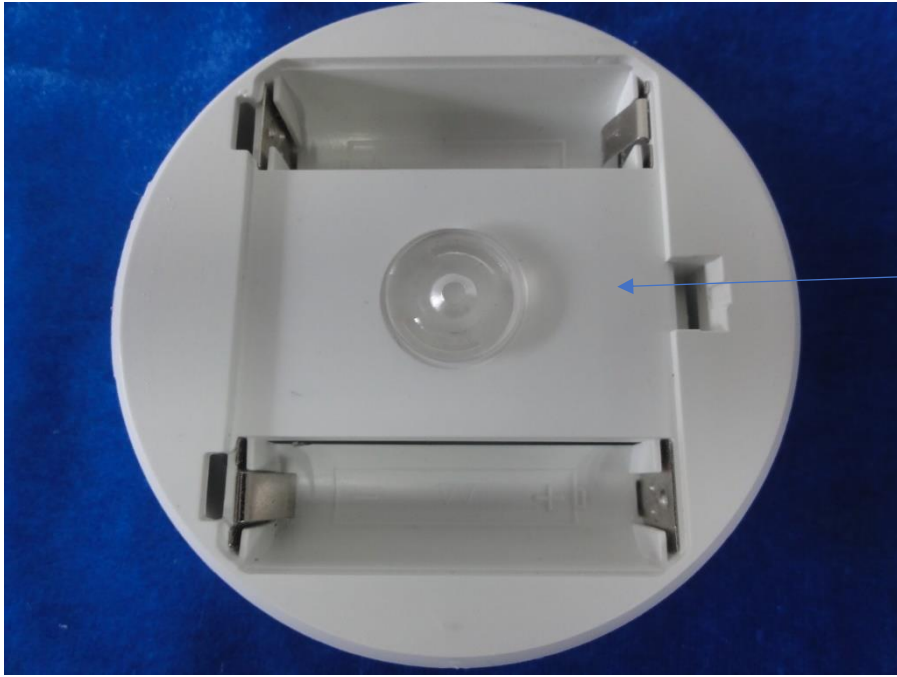
Label A: Visible after installation on an exterior surface or by removal of a part
using an ordinary tool, all letters shall be at least 1.6mm high.

Label B: Visible during installation, all letters shall be at least 1.6mm high except "Caution"
need 2.4mm

Label artwork



Label location for label A



Label location for Label B