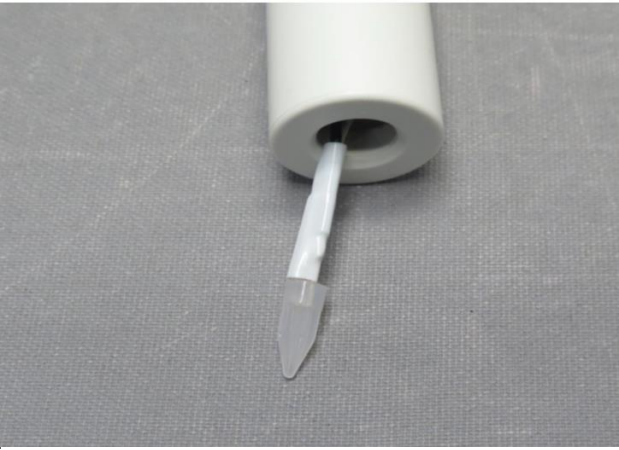
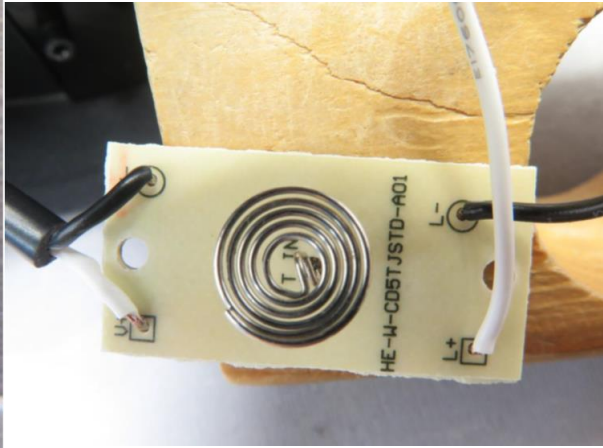
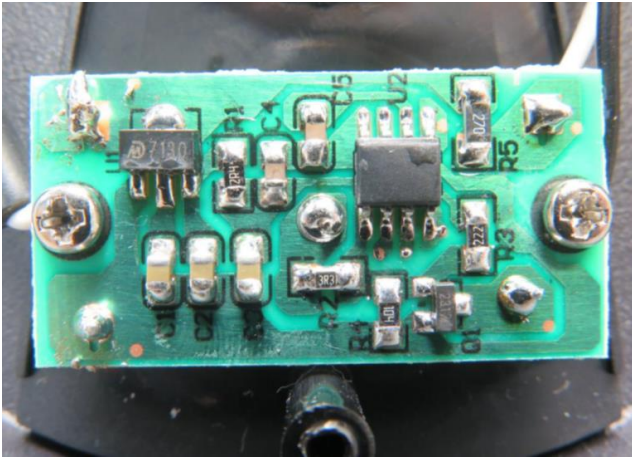


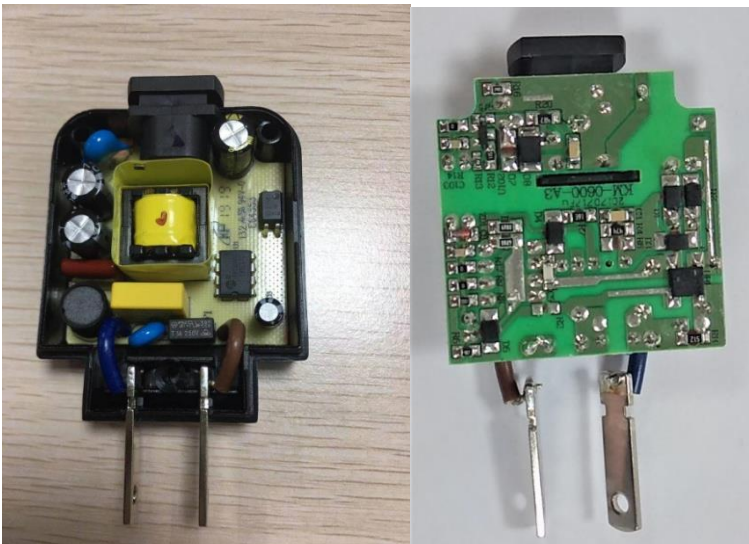
# J2020 STRÅLA LED 5-arm cndlbr black

External & Internal photos:





**Driver (KMV-040-030-NA-3) details :**





**Intertek**

4002352  
Type No. J2020

Stråla

Made in China

Conforms to:  
UL Std 588

Certified to:

CSA Std C22.2 No. 37

CAN ICES-005 (B) / NMB-005 (B)

This device complies with Part 15 of the FCC Rules. Operation is subject to the following two conditions: (1) this device may not cause harmful interference, and (2) this device must accept any interference received, including interference that may cause undesired operation.

FCC ID: FHO-J2020

4V DC, 0.2W

Sup. No. 22217



TYP J2020 NA Version 1

