



1914304STO-001 (J1936 Stråla)



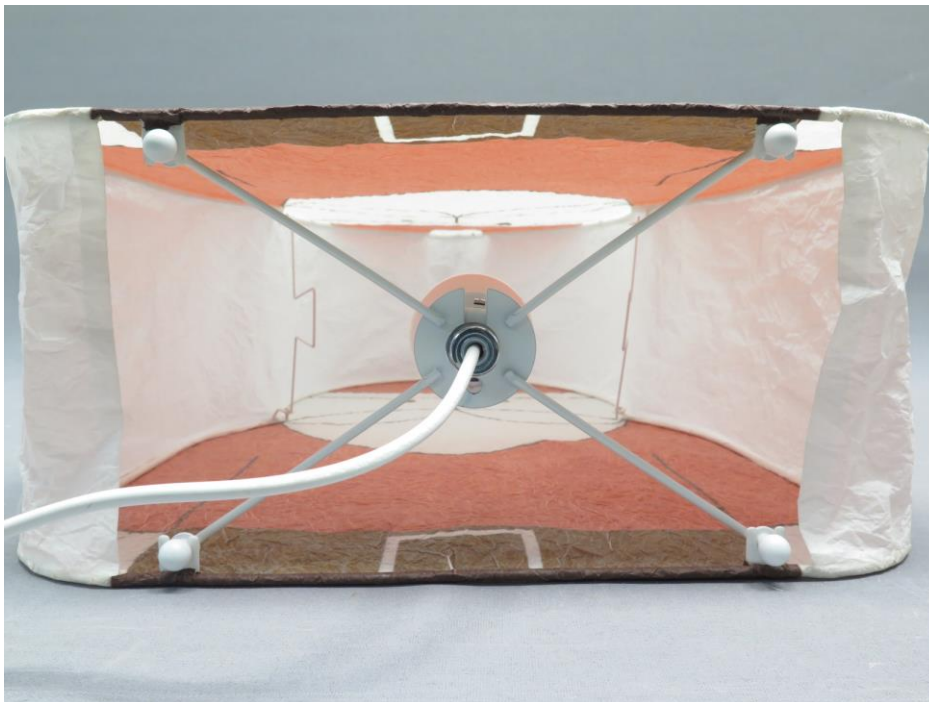
1914304STO-001 (J1936 Stråla)



1914304STO-001 (J1936 Strála)



1914304STO-001 (J1936 Strála)



1914304STO-001 (J1936 Stråla)



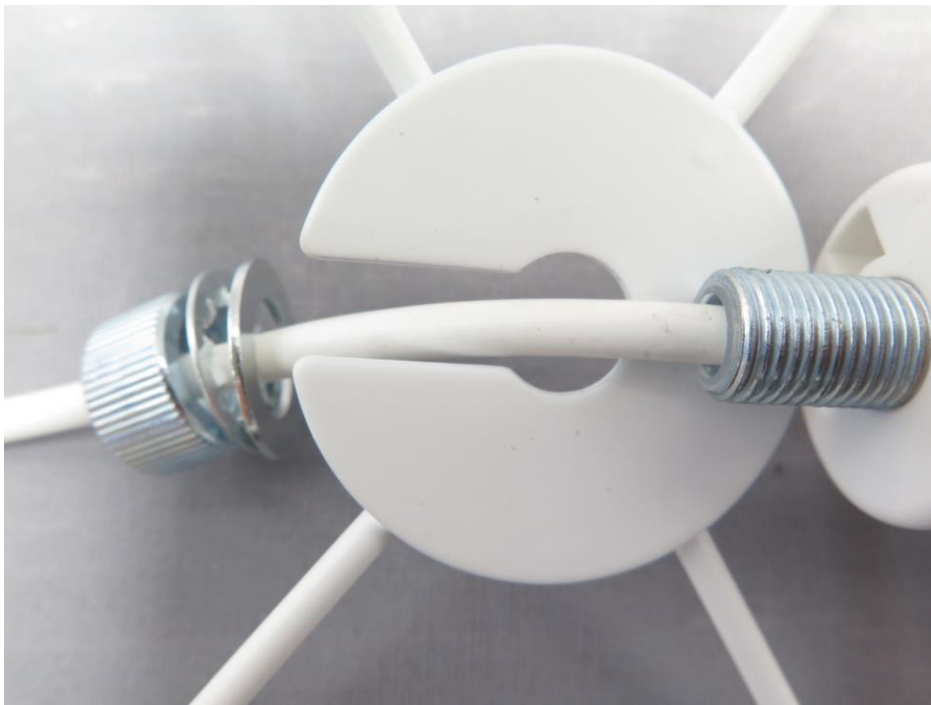
1914304STO-001 (J1936 Stråla)



1914304STO-001 (J1936 Stråla)



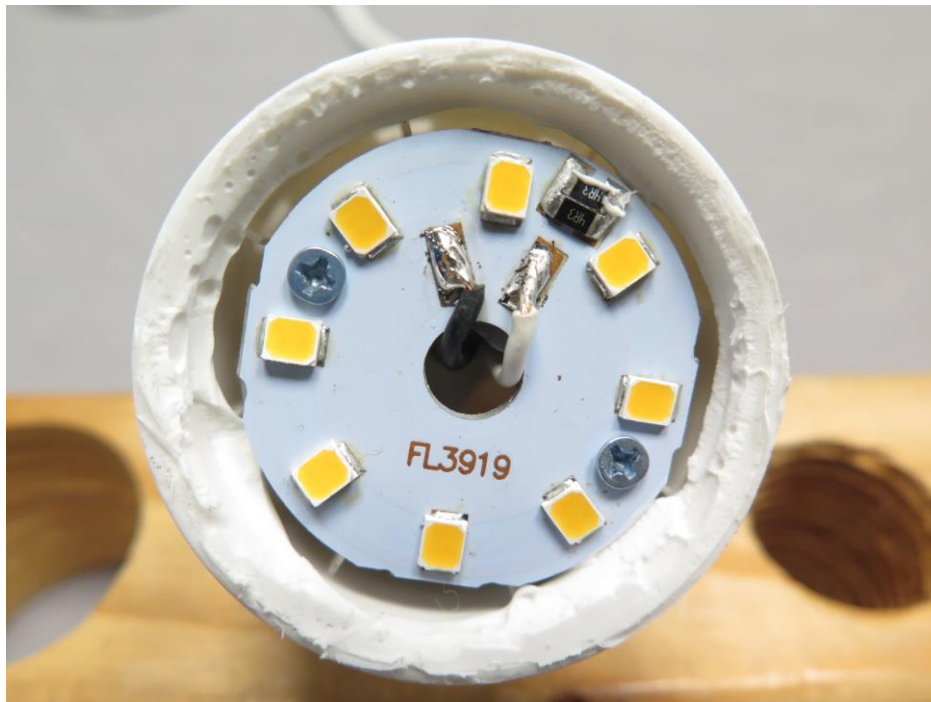
1914304STO-001 (J1936 Stråla)



1914304STO-001 (J1936 Stråla)



1914304STO-001 (J1936 Stråla)



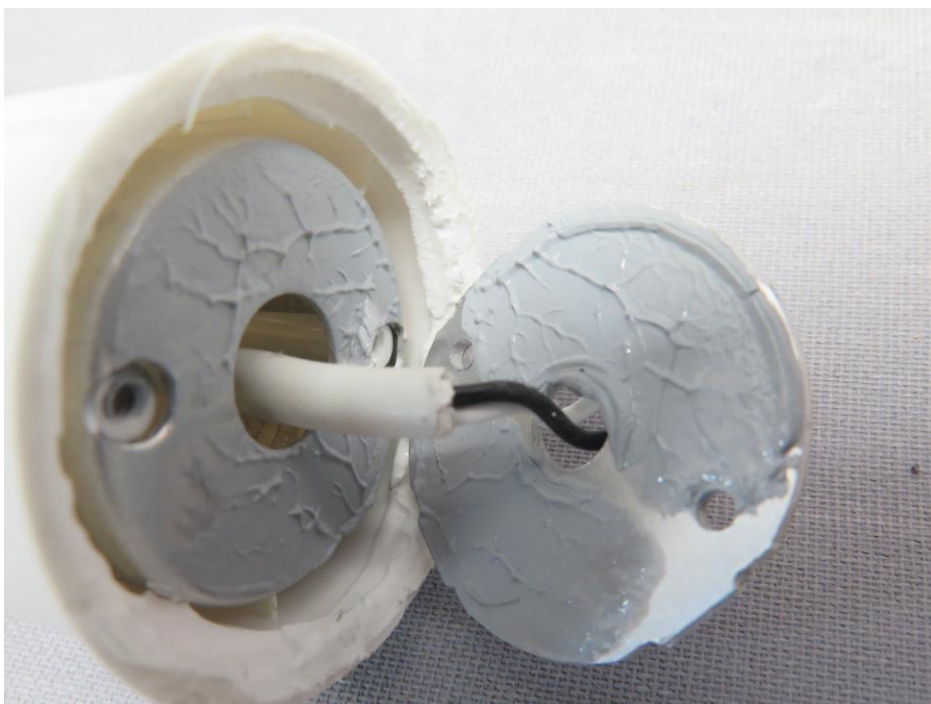
1914304STO-001 (J1936 Stråla)



1914304STO-001 (J1936 Stråla)



1914304STO-001 (J1936 Stråla)



1914304STO-001 (J1936 Stråla)



1914304STO-001 (J1936 Strála)





1914304STO-001 (J1936 Strála)



1914304STO-001 (J1936 Strála)

Label location

 Intertek 3060998 Type No. J1936	Conforms to: UL Std 588 Certified to: CSA Std C22.2 No. 37 CAN ICES-005 (B) / NMB-005 (B) This device complies with Part 15 of the FCC Rules. Operation is subject to the following two conditions: (1) this device may not cause harmful interference, and (2) this device must accept any interference received, including interference that may cause undesired operation.	FCC ID: FHO-J1936 4V DC, 2.2W
Stråla Made in China	Sup. No. 15621 	

TYP J1936 NA Version 1

