

Photo 1 - External view



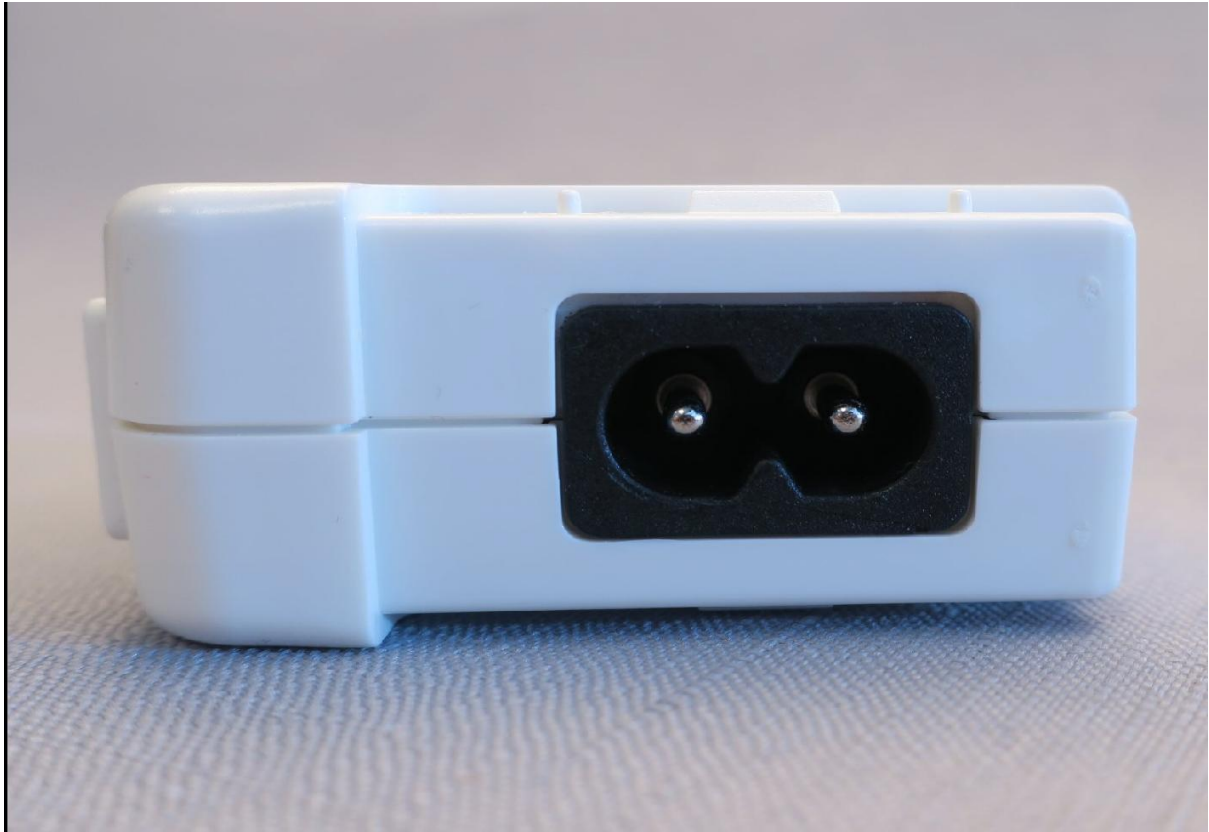


Photo 4 - External view of the DC output socket (connector)



Photo 5 - External view (with Optional mains plug ICPP-NA/JP-1 mounted)



Photo 6 - Internal view of ICPSW24-3-3

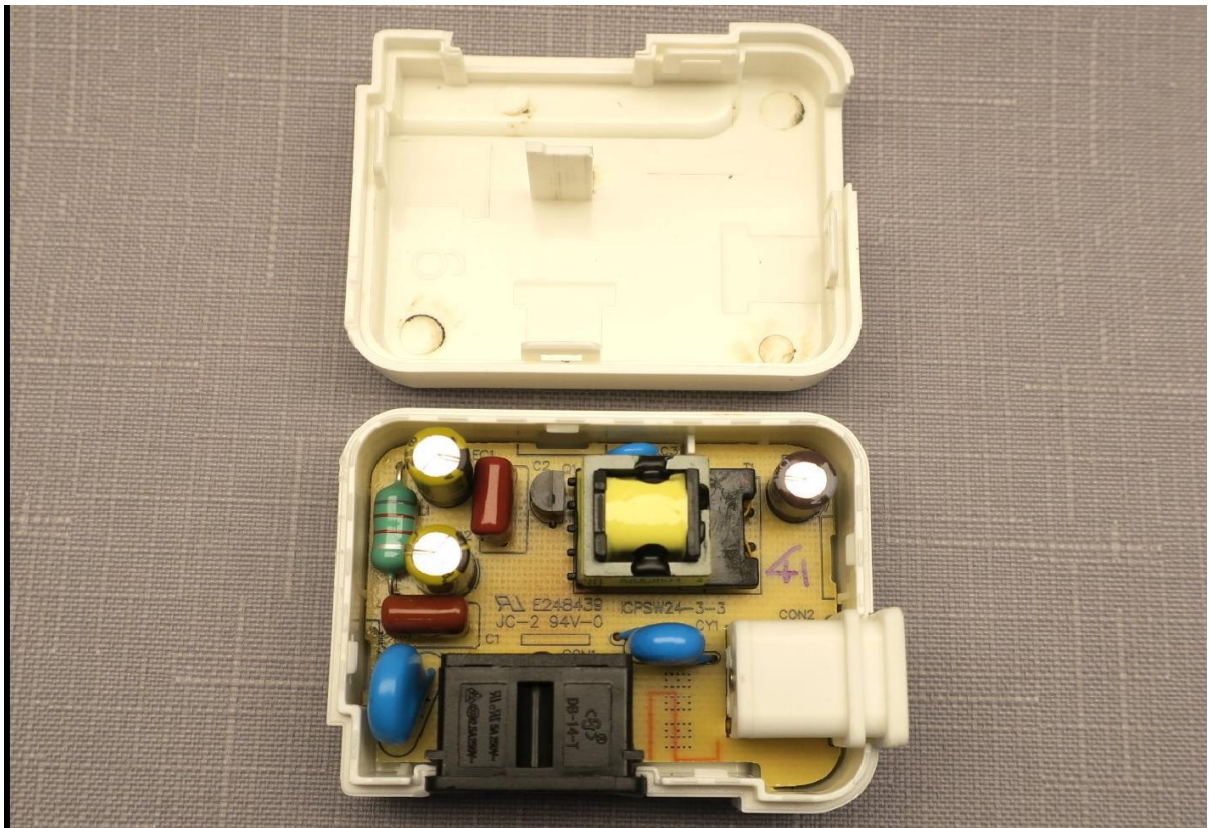


Photo 7 -External view of the PWB component side

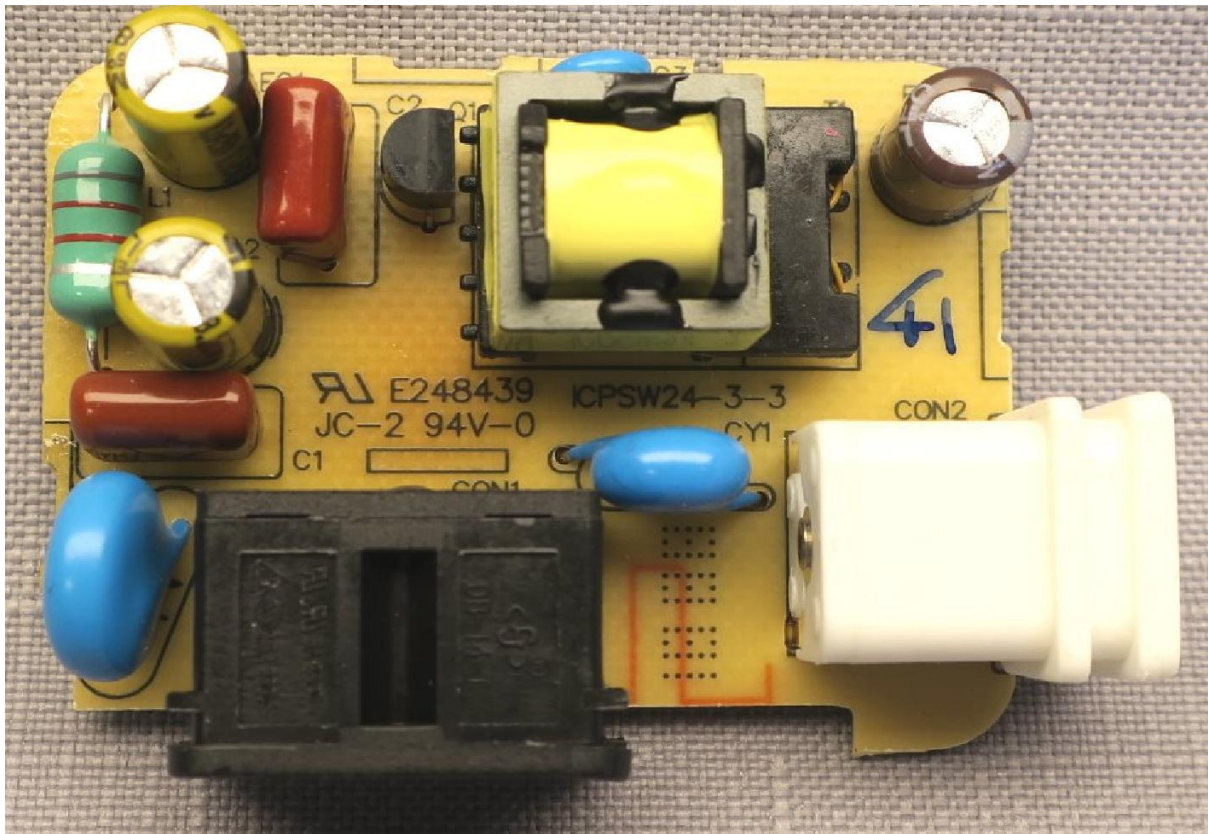


Photo 8 -External view of PWB rear side

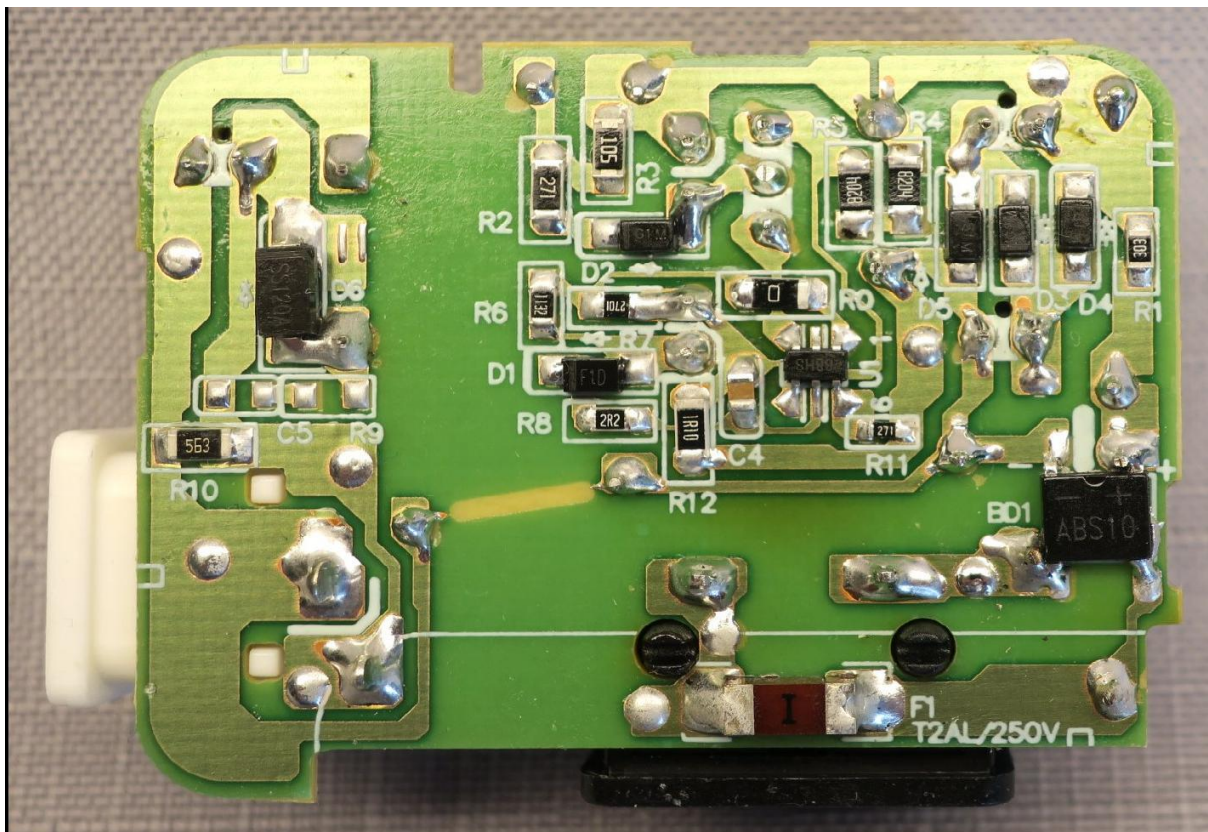


Photo 9 - External view of Optional Plug part

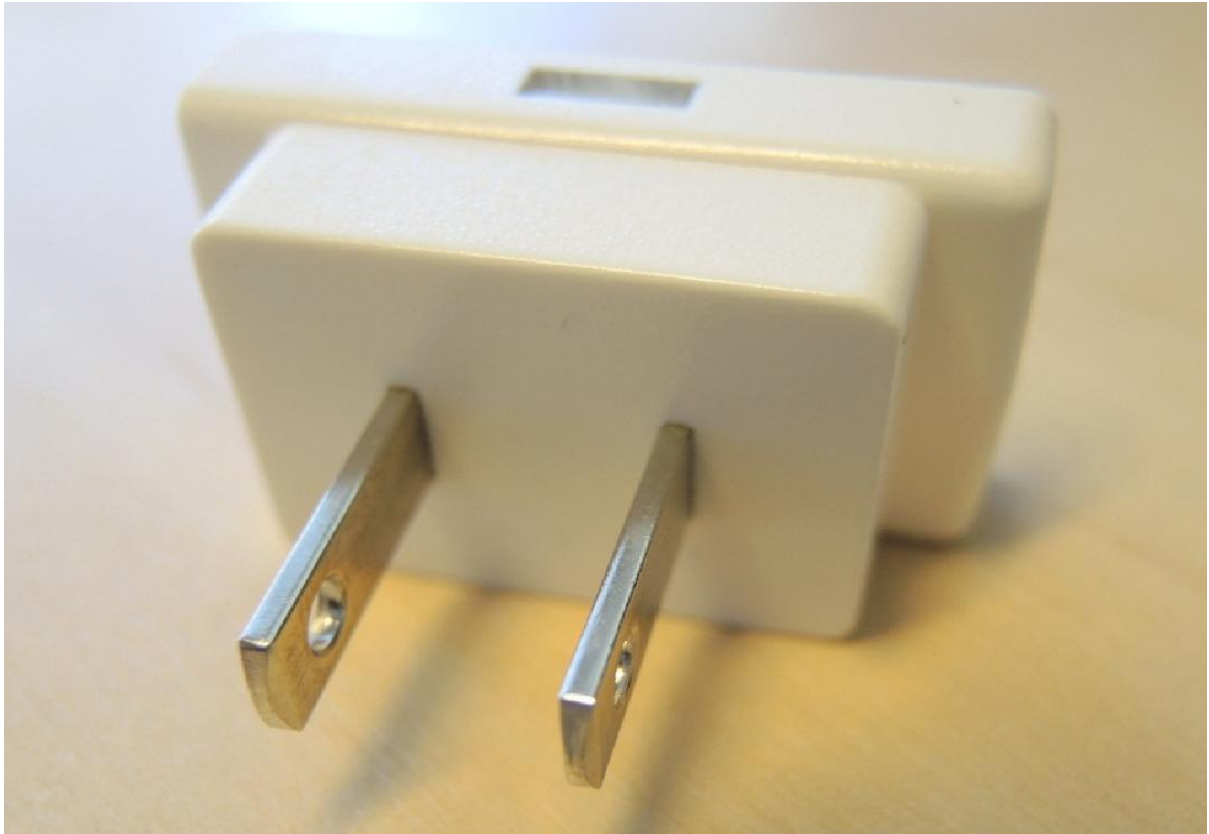
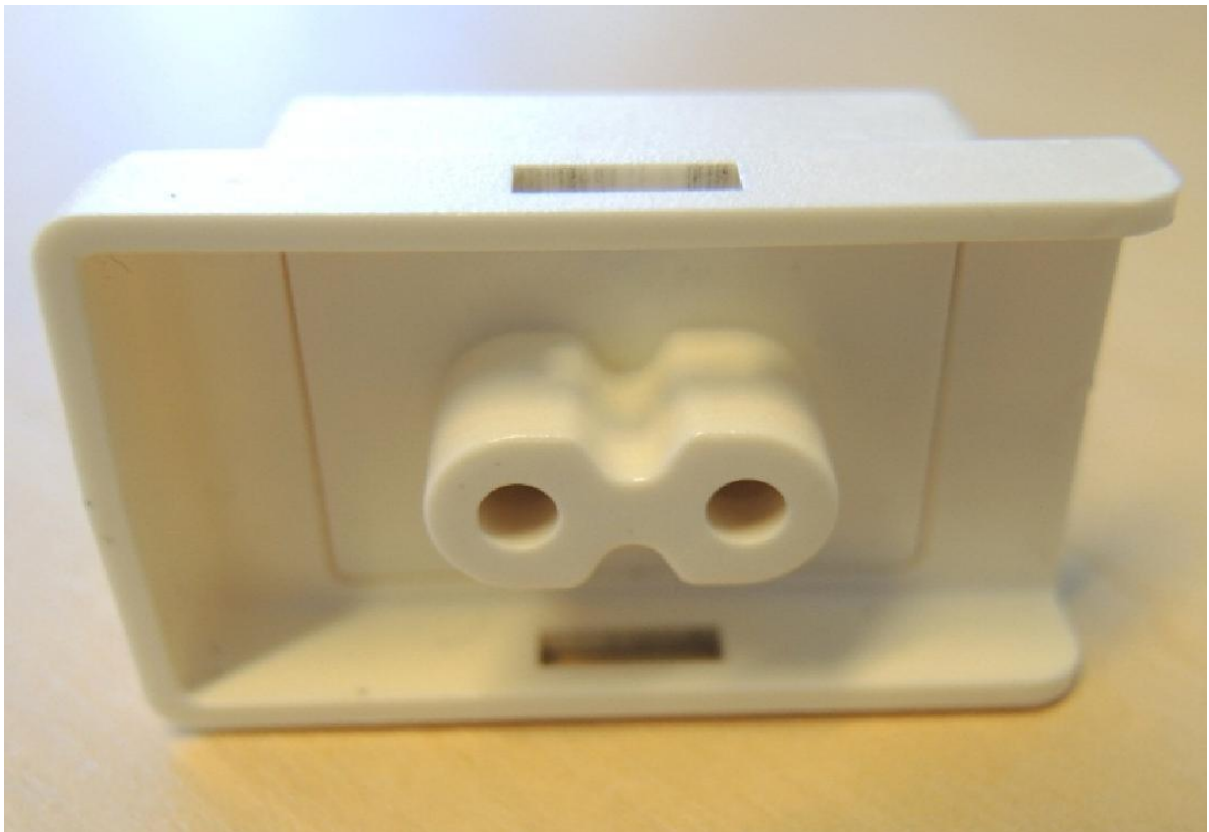
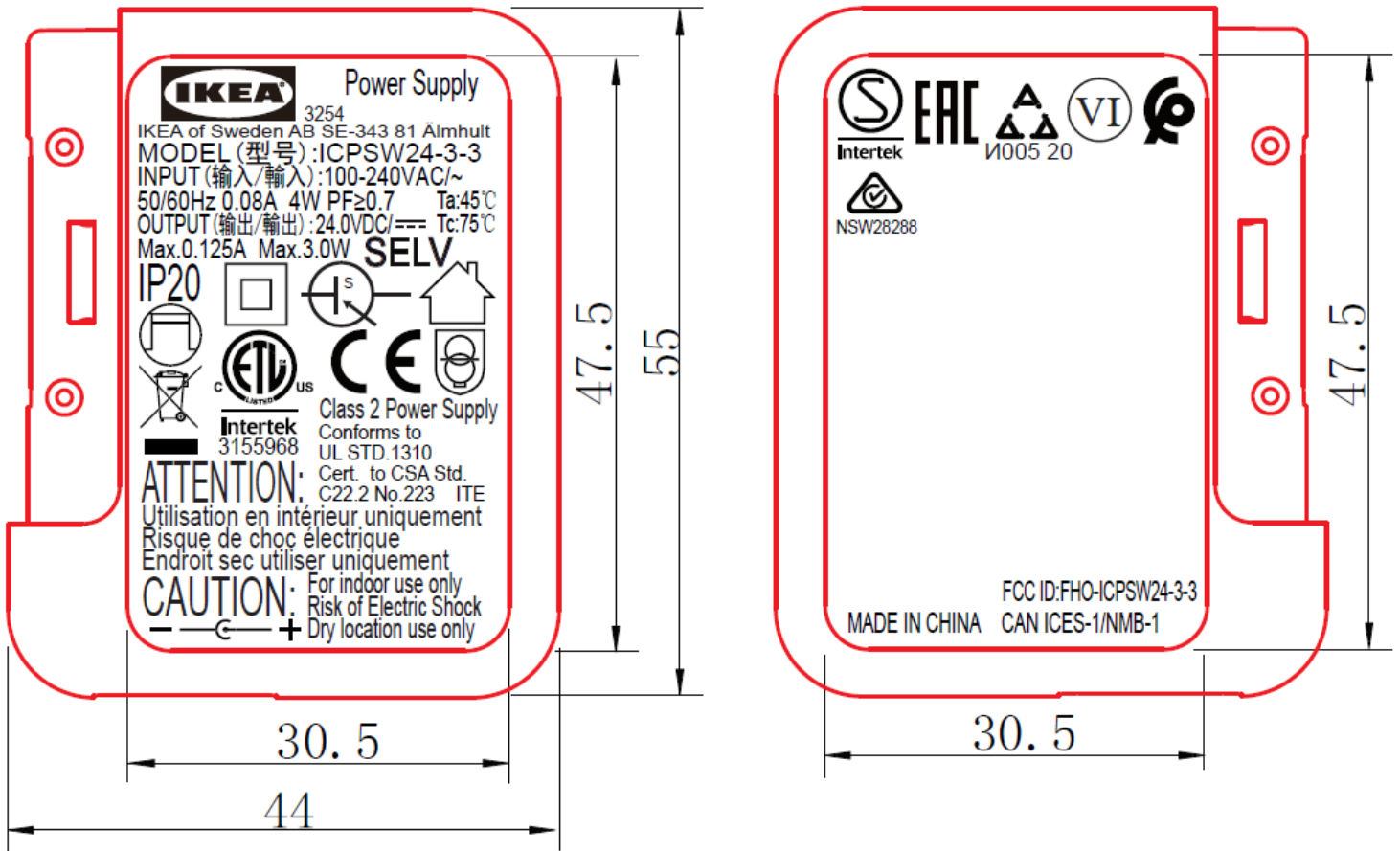


Photo 10 - External view of Optional Plug part




Revision 8	Revision Comment add AU-mark		
No. of Changes	Checked by	Approved by Jonas Filipsson (jonfil)	Approved date 2020-06-22



Date: 2020. 6. 22 Version: B9

A4

Measurements according to the SI systems.
This drawing is IKEA's property and is covered by industrial and intellectual property rights and should, without written consent from IKEA, in no way be copied, reproduced or communicated or otherwise used for any other purpose other than that which has been agreed.

Designed by IKEA of Sweden	No. of Pages 1 (1)	Tolerance	Replaces document
DRAWING  Design and Quality IKEA of Sweden	Description Electrical Component ♦ Electronic ♦		
	Name Label ICPSW24-3-3		
Product Name IKEA Parts Library			Doc number 2206602