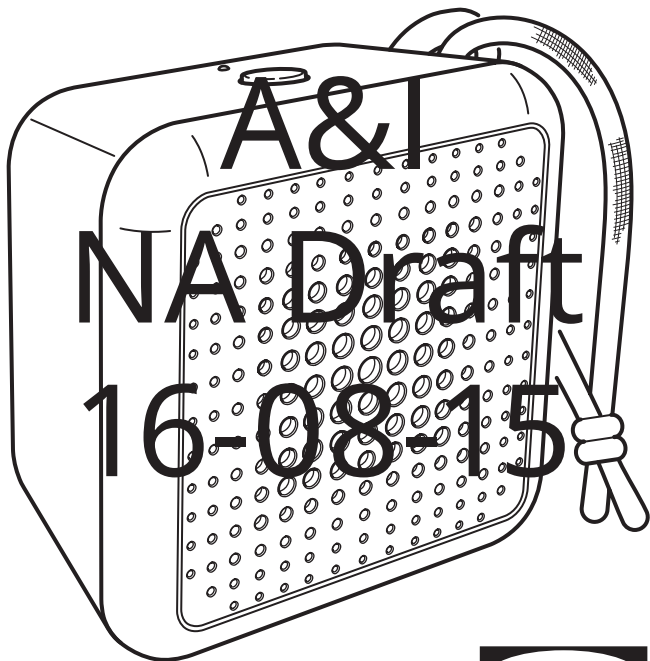
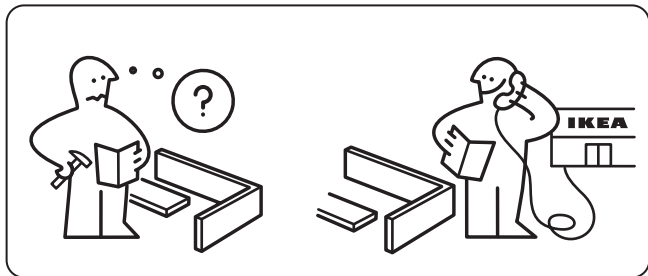
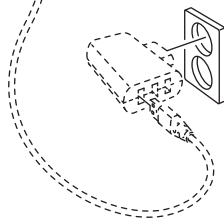
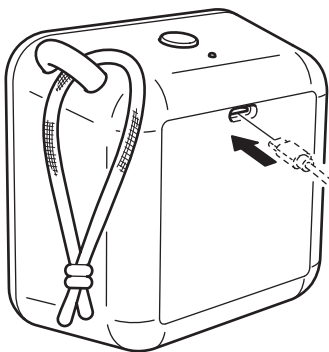
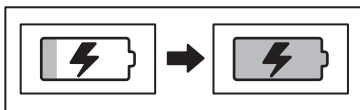


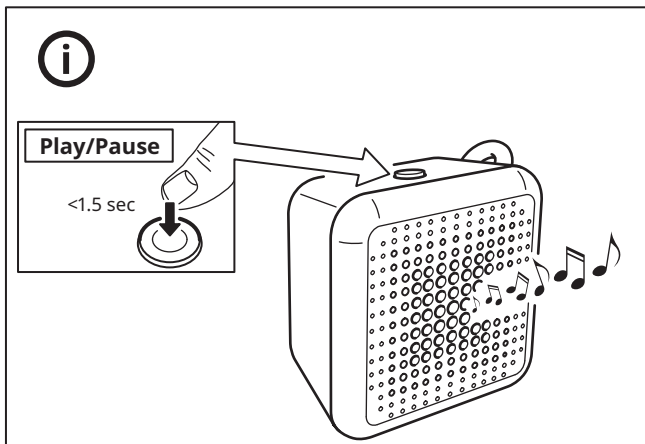
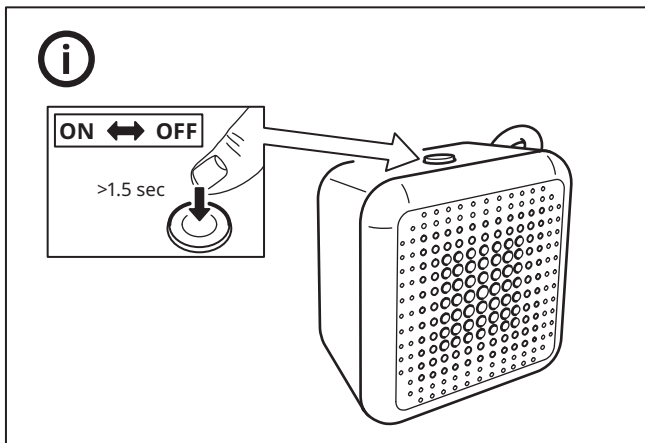
# VAPPEBY

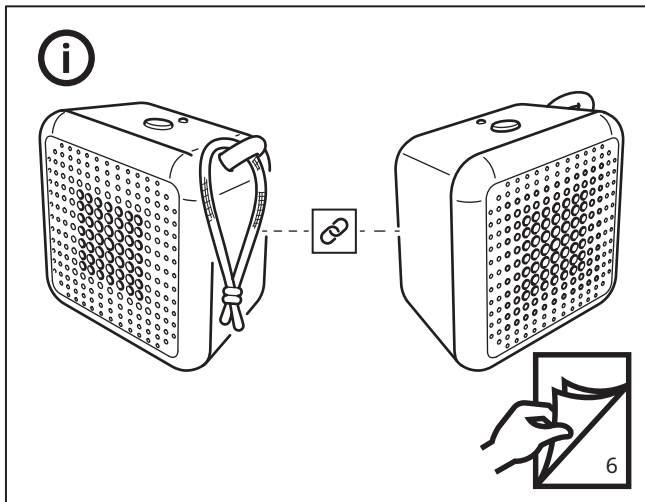
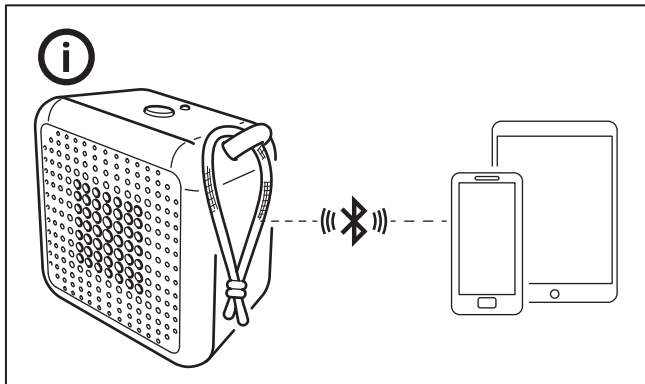


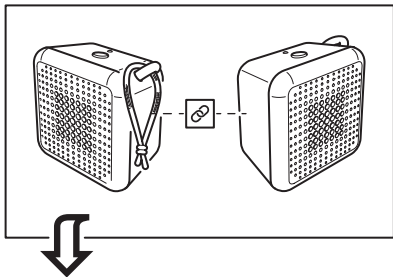
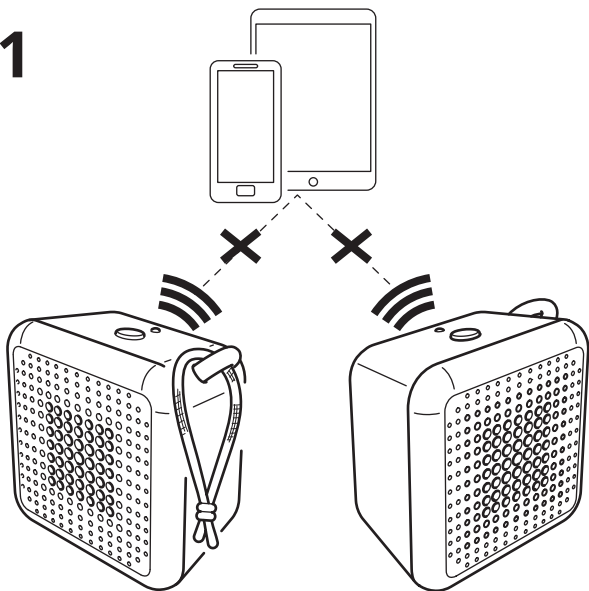
Design and Quality  
IKEA of Sweden

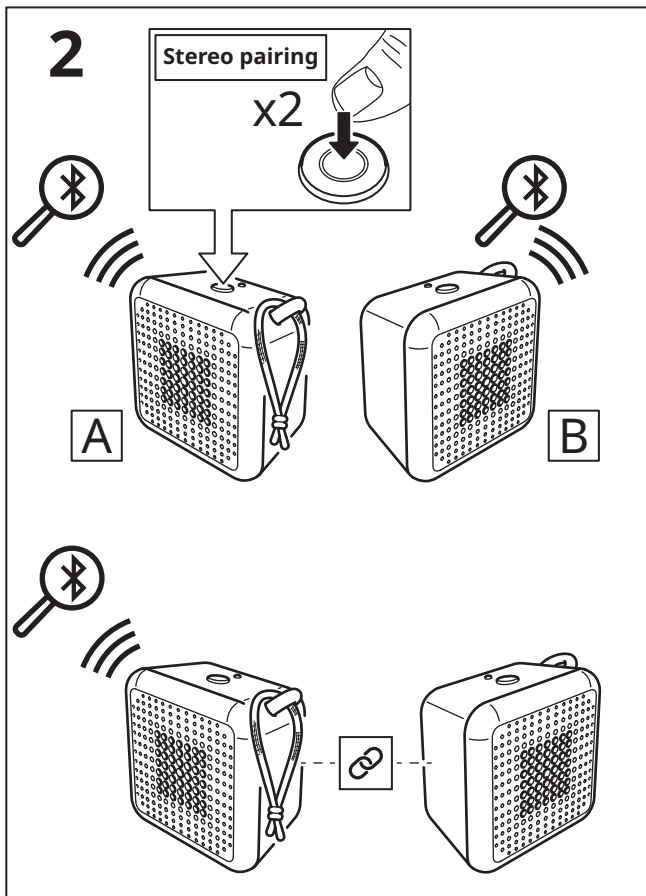




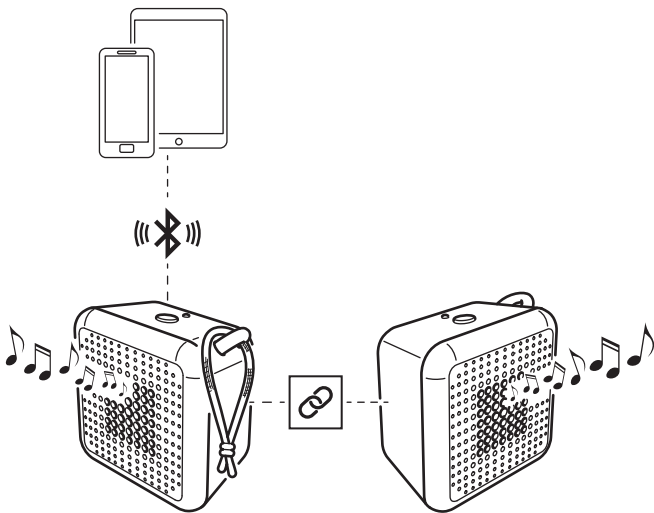




**1**

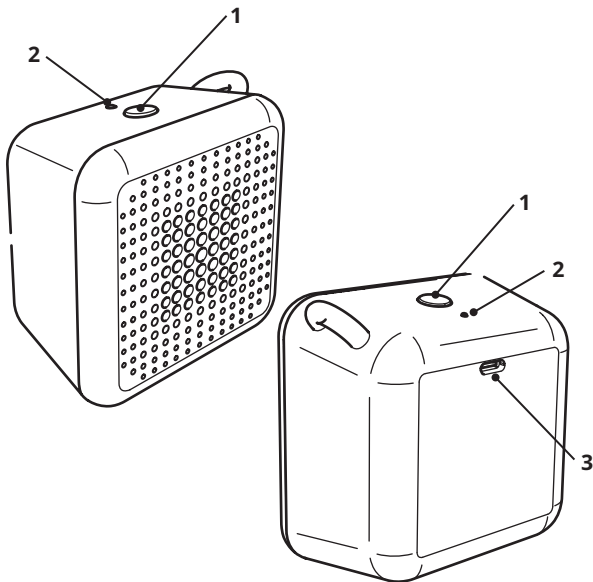


3





<b>English</b>	<b>10</b>
<b>Français</b>	<b>18</b>
<b>Español</b>	<b>27</b>



1. Speaker Power On/Off button and play/pause.
2. LED status light.
3. USB-C receptacle

### LED status

**Flashing white:** Music paused/Bluetooth is pairing.

**Solid white:** Power On/Paired to a device.

**Flashing red:** Low battery.

**Solid red:** Charging (when speaker is off).

## Getting started

Connect an USB-C cable to the input and the other end to a power source (a computer or an power supply) to charge your product before the first use and whenever the LED is flashing red to indicate low battery. When charging, the LED will remain solid red if the speaker is off and will turn off when the battery is fully charged.

## Recommended power supply:

5.0 VDC, 1.0 A (Not included)

## Speaker functions

### Turning ON/OFF.

Press and hold the Power button (1) to turn your speaker ON and OFF.

### Play/Pause.

A short press on the Power button will play or pause music.

### Auto-off.

If the speaker is not paired to any device, it will turn off automatically after 5 minutes. In case the speaker is paired but no music is playing, it will turn off automatically after 20 minutes.

### **Bluetooth Pairing**

To pair your speaker to a source device, the speaker will have to be in Bluetooth pairing mode. To pair, open the Bluetooth setting on your source device and connect to "VAPPEBY Portable".

The speaker will enter Bluetooth pairing mode automatically the first time it is powered on, and any time that a previously paired device cannot be found.

### **Factory reset**

To remove previous Bluetooth pairings, reset the speaker by pressing and holding the button (1) for more than 5 seconds. Successful factory reset is confirmed by the LED flashing red and with a system sound.

Alternatively, go to the Bluetooth menu on your source device and unpair.

### **Stereo Pairing:**

Two VAPPEBY Portable can be stereo paired:

1. Make sure both speakers are in Bluetooth search mode.
2. Double press the button on one of the speakers. A sound will confirm successful stereo pairing.
3. Connect to source device by following the Bluetooth pairing instruction.

**Good to know**

- The speaker is suitable for outdoor use, protected against dust and water according to IP67.
- If the speaker mesh is soaked with water, acoustic performance may be affected temporarily, but it will go back to normal once the water is gone.
- Devices and the battery may get warm during charging. This is completely normal, and they will gradually cool down again after they are fully charged.
- Charging time may vary based on the device's battery capacity, charge level, the age of the battery and the temperature in the surrounding area.
- USB cable length and quality influences charging speed and performance.
- Storage temperature: -20 °C to 25 °C (-4 °F to 77 °F).
- Unplug the product from the power supply before cleaning and when it is not in use.
- The battery should not be left discharged for a longer period.
- The battery should not be charged while in contact with flammable materials like textiles.

**WARNING:**

- Too high volume can damage your hearing.
- Do not charge the product when it is wet.
- Only charge the product indoors.
- Do not use a defective power supply when charging the product.
- Never use a damaged or faulty USB cable for charging, since this can damage the product and your devices.

- Never install the product in a confined space.
- Always leave a space of at least 5 mm around the product for ventilation.
- Children should be supervised to ensure they do not misuse the product.  
Do not modify, disassemble, open, drop, crush, puncture or shred the battery.
- Do not expose the battery to rain or water.
- Risk of fires and burns. Do not heat above 60 °C (140 °F) and do not incinerate the battery.
- Keep the battery away from open flame or sunlight to prevent heat build-up.
- Keep the battery away from high voltage devices.
- This product is not a toy, ensure that all persons who use this product read and follow these warnings and instructions.
- Do not short-circuit the battery or its cells.
- In the event of a cell leaking, do not allow the liquid to come in contact with the skin or eyes.

**Save these instructions for future use.**

### **Care instructions**

To clean the product, wipe with a soft moistened cloth. Use another soft, dry cloth to wipe dry.

### **Note!**

Never use abrasive cleaners or chemical solvents as this can damage the product.

## Product servicing

Do not attempt to repair this product yourself, as opening or removing covers may expose you to dangerous voltage points or other risks.

Disassembly of the product and removal of battery is only intended at the end of the product's life cycle and shall be performed by a skilled professional.

## Technical data

**Model Name:** VAPPEBY PT

**Type Number:** E2133

**Battery capacity:** 3.6 V, 2600 mAh, 9 Wh, Li-ion

**Input:** 5.0V DC, 1.0A, 5.0W USB Type-C

**Estimated battery play time at 50% volume and Bluetooth mode:** 11-13 hrs

**Operating temperatures:** 0°C to 40°C (32°F to 104°F)

**Operating humidity:** 0 to 95% RH

**Operating Frequency:** 2400-2483.5 MHz

**Radio output power:** 4 dBm (EIRP)

**IP Class:** IP67

**Manufacturer:** IKEA of Sweden AB

**Address:** Box 702, SE-343 81 Älmhult, SWEDEN



The Bluetooth® word mark and logos are registered trademarks owned by Bluetooth SIG, Inc. and any use of such marks by IKEA is under license. Other trademarks and trade names are those of their respective owners.

This device complies with Part 15 of the FCC Rules. This device contains licence-exempt transmitter(s)/ receiver(s) that comply with Innovation Science and Economic Development Canada's licence-exempt RSS standard(s).

Operation is subject to the following two conditions:

- (1) this device may not cause harmful interference, and
- (2) this device must accept any interference received, including interference that may cause undesired operation of the device.

## WARNING:

Any changes or modifications to this unit not expressly approved by the party responsible for compliance could void the user's authority to operate the equipment.

### NOTE:

This equipment has been tested and found to comply with the limits for a Class B digital device, pursuant to part 15 of the FCC Rules. These limits are designed to provide reasonable protection against harmful interference in a residential installation.

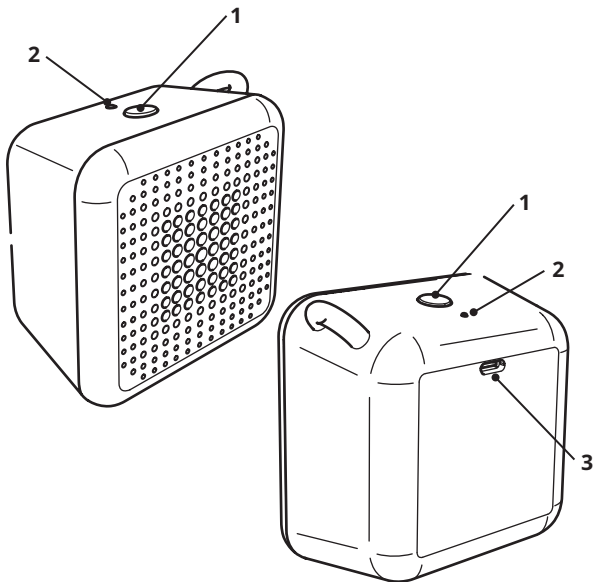


This equipment generates, uses and can radiate radio frequency energy and, if not installed and used in accordance with the instructions, may cause harmful interference to radio communications. However, there is no guarantee that interference will not occur in a particular installation. If this equipment does cause harmful interference to radio or television reception, which can be determined by turning the equipment off and on, the user is encouraged to try to correct the interference by one or more of the following measures:

- Reorient or relocate the receiving antenna.
- Increase the separation between the equipment and receiver.
- Connect the equipment into an outlet on a circuit different from that to which the receiver is connected.
- Consult the dealer or an experienced radio/TV technician for help.



The crossed-out wheeled bin symbol indicates that the item should be disposed of separately from household waste. The item should be handed in for recycling in accordance with local environmental regulations for waste disposal. By separating a marked item from household waste, you will help reduce the volume of waste sent to incinerators or land-fill and minimize any potential negative impact on human health and the environment. For more information, please contact your IKEA store.



1. Speaker Power On/Off button and play/pause.
2. LED status light.
3. USB-C receptacle

### LED status

**Flashing white:** Music paused/Bluetooth is pairing.

**Solid white:** Power On/Paired to a device.

**Flashing red:** Low battery.

**Solid red:** Charging (when speaker is off).

## Getting started

Connect an USB-C cable to the input and the other end to a power source (a computer or an power supply) to charge your product before the first use and whenever the LED is flashing red to indicate low battery. When charging, the LED will remain solid red if the speaker is off and will turn off when the battery is fully charged.

## Recommended power supply:

5.0 VDC, 1.0 A (Not included)

## Speaker functions

### Turning ON/OFF.

Press and hold the Power button (1) to turn your speaker ON and OFF.

### Play/Pause.

A short press on the Power button will play or pause music.

### Auto-off.

If the speaker is not paired to any device, it will turn off automatically after 5 minutes. In case the speaker is paired but no music is playing, it will turn off automatically after 20 minutes.

## **Bluetooth Pairing**

To pair your speaker to a source device, the speaker will have to be in Bluetooth pairing mode. To pair, open the Bluetooth setting on your source device and connect to "VAPPEBY Portable".

The speaker will enter Bluetooth pairing mode automatically the first time it is powered on, and any time that a previously paired device cannot be found.

## **Factory reset**

To remove previous Bluetooth pairings, reset the speaker by pressing and holding the button (1) for more than 5 seconds. Successful factory reset is confirmed by the LED flashing red and with a system sound.

Alternatively, go to the Bluetooth menu on your source device and unpair.

## **Stereo Pairing:**

Two VAPPEBY Portable can be stereo paired:

1. Make sure both speakers are in Bluetooth search mode.
2. Double press the button on one of the speakers. A sound will confirm successful stereo pairing.
3. Connect to source device by following the Bluetooth pairing instruction.

**Good to know**

- The speaker is suitable for outdoor use, protected against dust and water according to IP67.
- If the speaker mesh is soaked with water, acoustic performance may be affected temporarily, but it will go back to normal once the water is gone.
- Devices and the battery may get warm during charging. This is completely normal, and they will gradually cool down again after they are fully charged.
- Charging time may vary based on the device's battery capacity, charge level, the age of the battery and the temperature in the surrounding area.
- USB cable length and quality influences charging speed and performance.
- Storage temperature: -20 °C to 25 °C (-4 °F to 77 °F).
- Unplug the product from the power supply before cleaning and when it is not in use.
- The battery should not be left discharged for a longer period.
- The battery should not be charged while in contact with flammable materials like textiles.

**WARNING:**

- Too high volume can damage your hearing.
- Do not charge the product when it is wet.
- Only charge the product indoors.
- Do not use a defective power supply when charging the product.
- Never use a damaged or faulty USB cable for charging, since this can damage the product and your devices.

- Never install the product in a confined space.
- Always leave a space of at least 5 mm around the product for ventilation.
- Children should be supervised to ensure they do not misuse the product.  
Do not modify, disassemble, open, drop, crush, puncture or shred the battery.
- Do not expose the battery to rain or water.
- Risk of fires and burns. Do not heat above 60 °C (140 °F) and do not incinerate the battery.
- Keep the battery away from open flame or sunlight to prevent heat build-up.
- Keep the battery away from high voltage devices.
- This product is not a toy, ensure that all persons who use this product read and follow these warnings and instructions.
- Do not short-circuit the battery or its cells.
- In the event of a cell leaking, do not allow the liquid to come in contact with the skin or eyes.

**Save these instructions for future use.**

### **Care instructions**

To clean the product, wipe with a soft moistened cloth. Use another soft, dry cloth to wipe dry.

### **Note!**

Never use abrasive cleaners or chemical solvents as this can damage the product.

## Product servicing

Do not attempt to repair this product yourself, as opening or removing covers may expose you to dangerous voltage points or other risks.

Disassembly of the product and removal of battery is only intended at the end of the product's life cycle and shall be performed by a skilled professional.

## Technical data

**Model Name:** VAPPEBY PT

**Type Number:** E2133

**Battery capacity:** 3.6 V, 2600 mAh, 9 Wh, Li-ion

**Input:** 5.0V DC, 1.0A, 5.0W USB Type-C

**Estimated battery play time at 50% volume and Bluetooth mode:** 11-13 hrs

**Operating temperatures:** 0°C to 40°C (32°F to 104°F)

**Operating humidity:** 0 to 95% RH

**Operating Frequency:** 2400-2483.5 MHz

**Radio output power:** 4 dBm (EIRP)

**IP Class:** IP67

**Manufacturer:** IKEA of Sweden AB

**Address:** Box 702, SE-343 81 Älmhult, SWEDEN



Les logos et la marque Bluetooth® sont des marques déposées de Bluetooth SIG, Inc. ; toutes les utilisations de ces marques par IKEA sont régies par des accords de licence. Toutes les autres marques commerciales ou noms commerciaux sont la propriété de leurs titulaires respectifs.

Ce dispositif est conforme à la section 15 des règlements de la FCC.

Ce dispositif contient un ou plusieurs émetteurs/ récepteurs sans licence qui sont conformes à la ou aux normes RSS sans licence d'Innovation, Sciences et Développement économique Canada.

Le fonctionnement est soumis aux deux conditions suivantes :

- (1) cet appareil ne doit pas provoquer d'interférences nuisibles, et
- (2) cet appareil doit accepter toute autre interférence reçue, y compris les interférences pouvant entraîner un fonctionnement non désiré.

## ATTENTION :

Tout changement ou modification apportés à cet appareil sans approbation expresse de la partie responsable de la conformité peut rendre nulle la capacité de l'utilisateur à utiliser cet appareil.



**REMARQUE :**

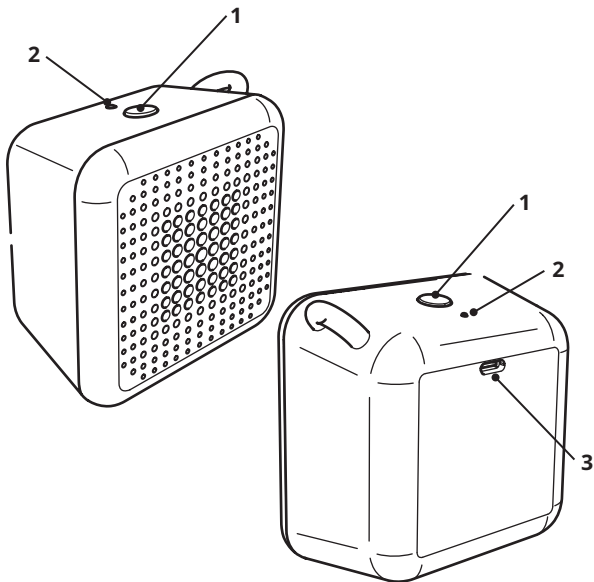
Cet appareil a été testé et il est conforme aux exigences relatives aux appareils électroniques de classe B, selon la section 15 des règles de la FCC (Commission fédérale des communications). Ces exigences sont prévues pour fournir une protection raisonnable contre les interférences nuisibles dans le cas d'une installation domestique.

Cet appareil génère, utilise et peut émettre de l'énergie sous forme de fréquences radio. Si l'appareil n'est pas installé ou utilisé conformément aux instructions, il peut provoquer des interférences perturbant les communications radio. Il est cependant impossible de garantir l'absence totale d'interférences d'une installation donnée. Si cet appareil produit des interférences nuisibles à la réception radio/télévision, ce qui peut-être déterminé en mettant successivement l'appareil sous tension et hors tension, nous conseillons à l'utilisateur d'essayer de remédier à ce problème en suivant l'une des procédures suivantes :

- Réorienter ou déplacer l'antenne de réception.
- Augmenter la distance entre l'appareil et le récepteur.
- Brancher l'appareil à une prise placée sur un circuit différent de celui auquel le récepteur est raccordé.
- Contacter votre revendeur ou tout technicien radio/TV qualifié pour obtenir de l'aide.



Le pictogramme de la poubelle barrée indique que le produit doit faire l'objet d'un tri. Il doit être recyclé conformément à la réglementation environnementale locale en matière de déchets. En triant les produits portant ce pictogramme, vous contribuez à réduire le volume des déchets incinérés ou enfouis, et à diminuer tout impact négatif sur la santé humaine et l'environnement. Pour plus d'information, merci de contacter votre magasin IKEA.



1. Speaker Power On/Off button and play/pause.
2. LED status light.
3. USB-C receptacle

### LED status

**Flashing white:** Music paused/Bluetooth is pairing.

**Solid white:** Power On/Paired to a device.

**Flashing red:** Low battery.

**Solid red:** Charging (when speaker is off).

## Getting started

Connect an USB-C cable to the input and the other end to a power source (a computer or an power supply) to charge your product before the first use and whenever the LED is flashing red to indicate low battery. When charging, the LED will remain solid red if the speaker is off and will turn off when the battery is fully charged.

## Recommended power supply:

5.0 VDC, 1.0 A (Not included)

## Speaker functions

### Turning ON/OFF.

Press and hold the Power button (1) to turn your speaker ON and OFF.

### Play/Pause.

A short press on the Power button will play or pause music.

### Auto-off.

If the speaker is not paired to any device, it will turn off automatically after 5 minutes. In case the speaker is paired but no music is playing, it will turn off automatically after 20 minutes.

## **Bluetooth Pairing**

To pair your speaker to a source device, the speaker will have to be in Bluetooth pairing mode. To pair, open the Bluetooth setting on your source device and connect to "VAPPEBY Portable".

The speaker will enter Bluetooth pairing mode automatically the first time it is powered on, and any time that a previously paired device cannot be found.

## **Factory reset**

To remove previous Bluetooth pairings, reset the speaker by pressing and holding the button (1) for more than 5 seconds. Successful factory reset is confirmed by the LED flashing red and with a system sound.

Alternatively, go to the Bluetooth menu on your source device and unpair.

## **Stereo Pairing:**

Two VAPPEBY Portable can be stereo paired:

1. Make sure both speakers are in Bluetooth search mode.
2. Double press the button on one of the speakers. A sound will confirm successful stereo pairing.
3. Connect to source device by following the Bluetooth pairing instruction.

**Good to know**

- The speaker is suitable for outdoor use, protected against dust and water according to IP67.
- If the speaker mesh is soaked with water, acoustic performance may be affected temporarily, but it will go back to normal once the water is gone.
- Devices and the battery may get warm during charging. This is completely normal, and they will gradually cool down again after they are fully charged.
- Charging time may vary based on the device's battery capacity, charge level, the age of the battery and the temperature in the surrounding area.
- USB cable length and quality influences charging speed and performance.
- Storage temperature: -20 °C to 25 °C (-4 °F to 77 °F).
- Unplug the product from the power supply before cleaning and when it is not in use.
- The battery should not be left discharged for a longer period.
- The battery should not be charged while in contact with flammable materials like textiles.

**WARNING:**

- Too high volume can damage your hearing.
- Do not charge the product when it is wet.
- Only charge the product indoors.
- Do not use a defective power supply when charging the product.
- Never use a damaged or faulty USB cable for charging, since this can damage the product and your devices.

- Never install the product in a confined space.
- Always leave a space of at least 5 mm around the product for ventilation.
- Children should be supervised to ensure they do not misuse the product.  
Do not modify, disassemble, open, drop, crush, puncture or shred the battery.
- Do not expose the battery to rain or water.
- Risk of fires and burns. Do not heat above 60 °C (140 °F) and do not incinerate the battery.
- Keep the battery away from open flame or sunlight to prevent heat build-up.
- Keep the battery away from high voltage devices.
- This product is not a toy, ensure that all persons who use this product read and follow these warnings and instructions.
- Do not short-circuit the battery or its cells.
- In the event of a cell leaking, do not allow the liquid to come in contact with the skin or eyes.

**Save these instructions for future use.**

### **Care instructions**

To clean the product, wipe with a soft moistened cloth. Use another soft, dry cloth to wipe dry.

### **Note!**

Never use abrasive cleaners or chemical solvents as this can damage the product.

## Product servicing

Do not attempt to repair this product yourself, as opening or removing covers may expose you to dangerous voltage points or other risks.

Disassembly of the product and removal of battery is only intended at the end of the product's life cycle and shall be performed by a skilled professional.

## Technical data

**Model Name:** VAPPEBY PT

**Type Number:** E2133

**Battery capacity:** 3.6 V, 2600 mAh, 9 Wh, Li-ion

**Input:** 5.0V DC, 1.0A, 5.0W USB Type-C

**Estimated battery play time at 50% volume and Bluetooth mode:** 11-13 hrs

**Operating temperatures:** 0°C to 40°C (32°F to 104°F)

**Operating humidity:** 0 to 95% RH

**Operating Frequency:** 2400-2483.5 MHz

**Radio output power:** 4 dBm (EIRP)

**IP Class:** IP67

**Manufacturer:** IKEA of Sweden AB

**Address:** Box 702, SE-343 81 Älmhult, SWEDEN





La palabra y los logotipos Bluetooth® son marcas comerciales registradas propiedad de Bluetooth SIG, Inc., e IKEA hace uso de dichas marcas bajo licencia. Las demás marcas y nombres comerciales pertenecen a sus respectivos propietarios.

Este dispositivo cumple la parte 15 de la normativa de la FCC.

Este dispositivo contiene transmisores/receptores exentos de licencia que cumplen las normas RSS de exención de licencia del Innovation Science and Economic Development Canada.

El funcionamiento está sujeto a las dos condiciones siguientes:

- (1) Este dispositivo no puede provocar interferencias dañinas, y
- (2) Este dispositivo debe aceptar cualquier interferencia recibida, incluida la interferencia que pueda provocar un funcionamiento no deseado del dispositivo.

## ATENCIÓN:

Cualquier cambio o modificación que se realice en este aparato sin la aprobación expresa de la parte responsable de la conformidad puede anular la capacidad del usuario para utilizar el aparato.

### **NOTA:**

Este equipo ha sido probado para comprobar que

cumple los límites establecidos en los dispositivos digitales de Clase B, según el apartado 15 del reglamento FCC. Estos límites se han establecido para proporcionar una protección razonable contra las interferencias perjudiciales en una instalación doméstica.

Este equipo genera, usa e irradia energía de radiofrecuencia, y si no se instala y se usa de acuerdo con las instrucciones, puede causar interferencias perjudiciales en las comunicaciones por radio. Sin embargo no existe garantía de que no se produzcan interferencias en una instalación en concreto. Si el equipo produjera interferencias perjudiciales en la recepción de radio o TV, lo que se puede comprobar encendiendo y apagando el equipo, recomendamos al usuario que intente corregir dichas interferencias adoptando una o más de las siguientes medidas:

- Reorientar o recolocar la antena receptora.
- Aumentar la distancia entre el equipo y el receptor.
- Conectar el equipo a un enchufe o circuito distinto al que esté conectado el receptor.
- Solicitar ayuda al vendedor o a un técnico cualificado de radio/TV.



La imagen del cubo de basura tachado indica que el producto no debe formar parte de los residuos habituales del hogar. Se debe reciclar según la normativa local medioambiental de eliminación de residuos. Cuando separas los productos que llevan esta imagen, contribuyes a reducir el volumen de residuos que se incineran o se envían a vertederos y minimizas el impacto negativo sobre la salud y el medio ambiente. Para más información, ponte en contacto con tu tienda IKEA.

**MX**

Importador/Distribuidor: IKEA Supply Mexico,S.A. de C.V., Calle Oriente 158, número 440, Piso 3, Local JD-01, Colonia Moctezuma, Segunda Sección, Alcaldía Venustiano Carranza, C.P. 15500, Ciudad de México. Tel. 55-8310-8310.

Lea y siga todas las instrucciones de seguridad y operación antes de usar este producto/Para uso Interior/Consulte Especificaciones eléctricas en el etiquetado del producto.