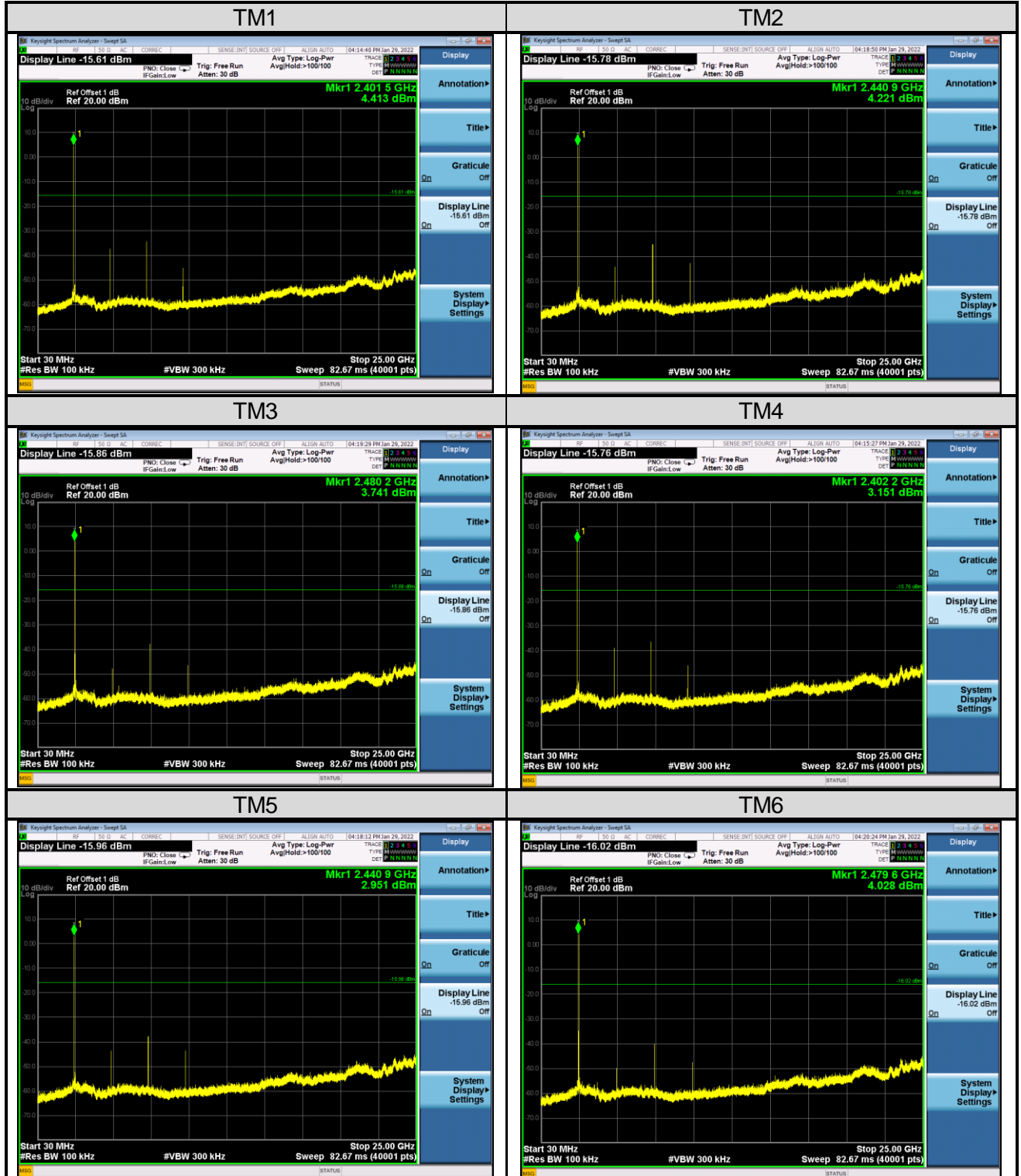
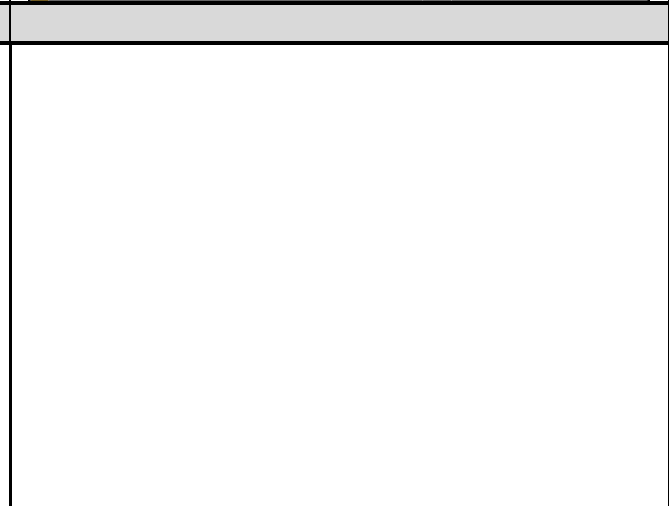
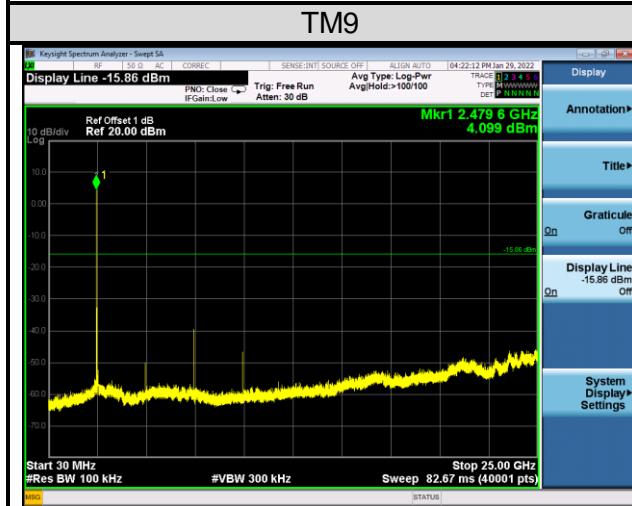
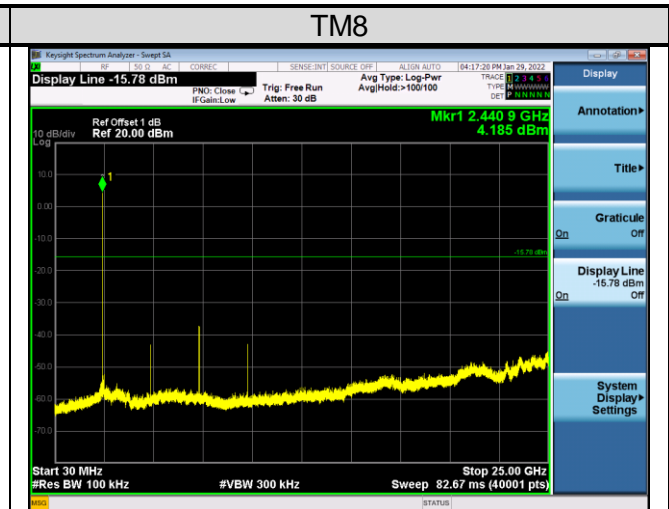
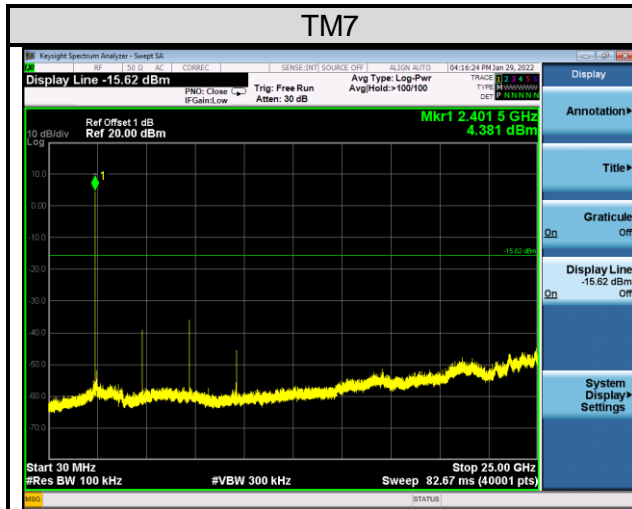


Figure 8: Conducted Spurious Emission


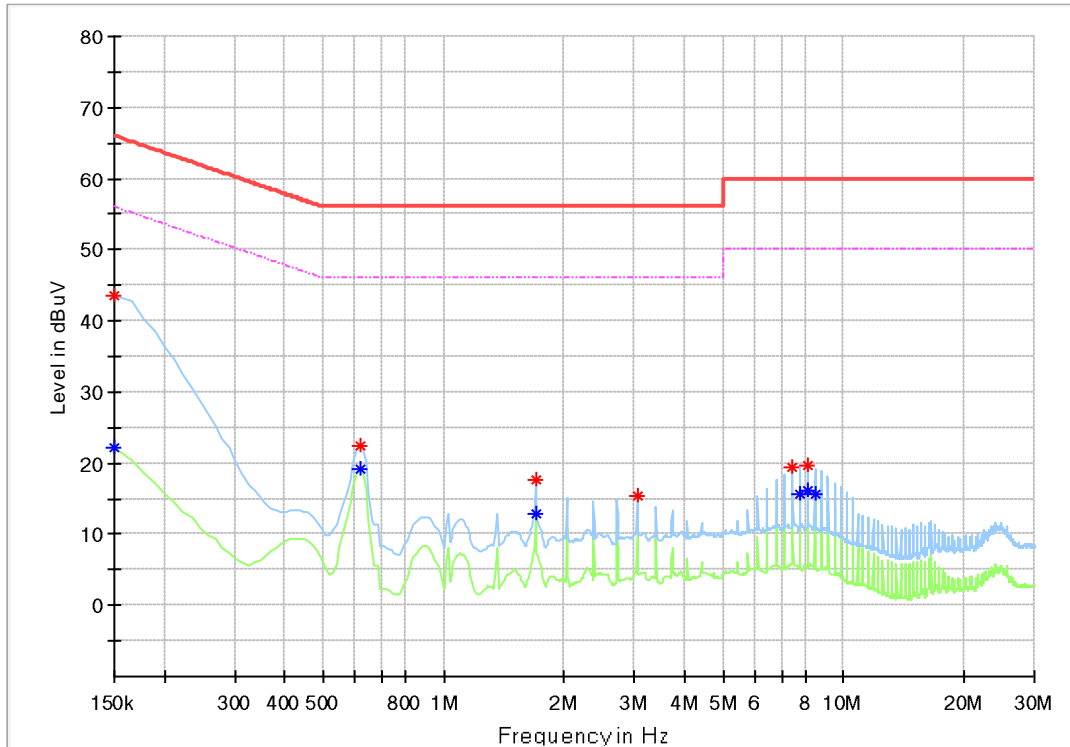


5.2 Emission in the Frequency Range up to 30MHz

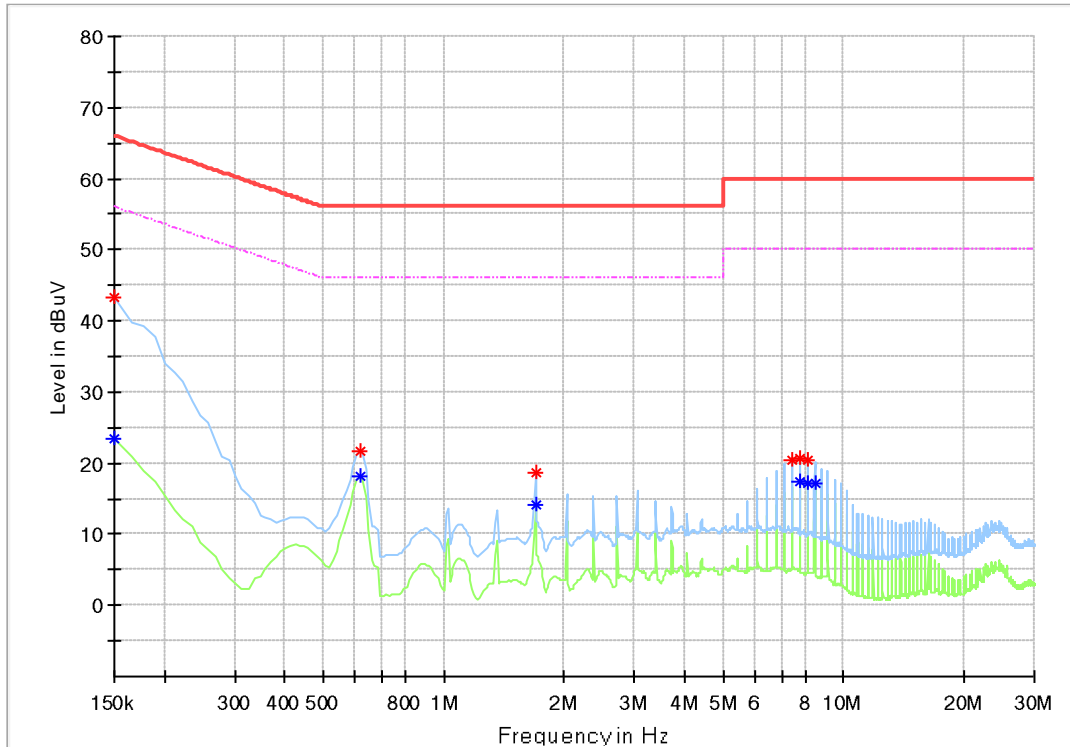
5.2.1 Conducted Emission

RESULT:**Pass**

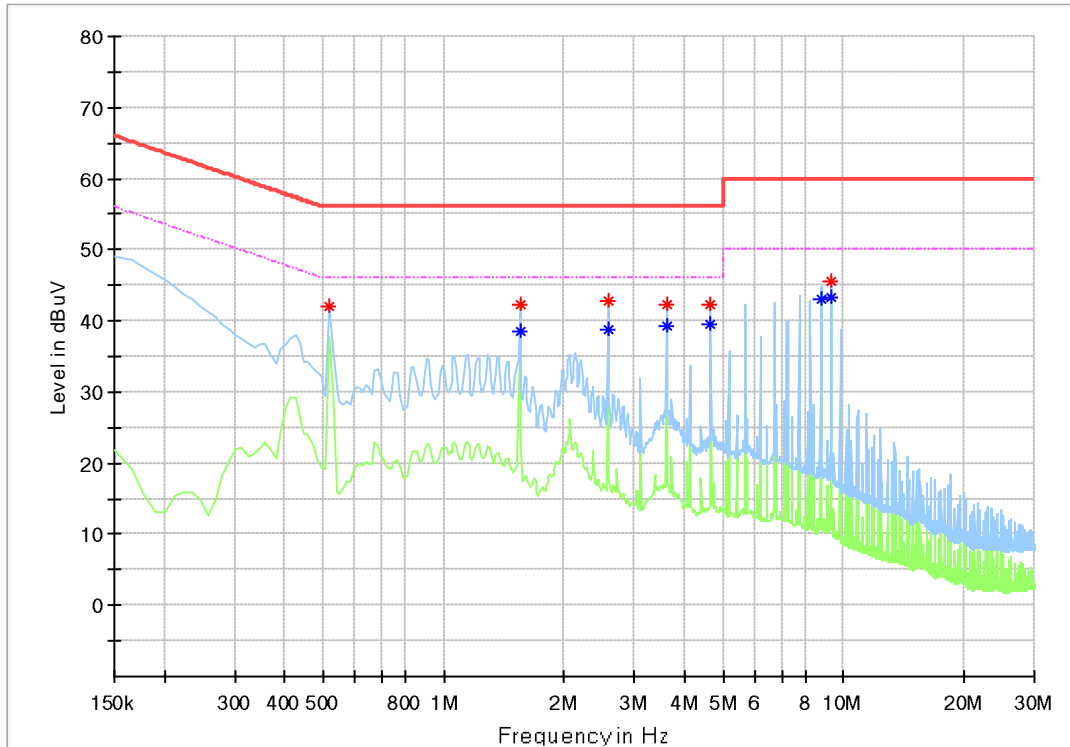
Date of testing	:	2022-01-12~2022-03~16
Ambient temperature	:	22.6~23.3°C
Relative humidity	:	36.2~45.8%
Atmospheric pressure	:	101kPa
Test requirement	:	FCC Part 15.207 (a) RSS-Gen Issue 5, Amendment 2, February 2021, Clause 8.8
Test procedure	:	ANSI C63.10: 2013
Test voltage	:	AC 120V, 60Hz
Test modes applied	:	TM19

Figure 9: Conducted Emission, L, with Adapter No.1

Critical_Freqs

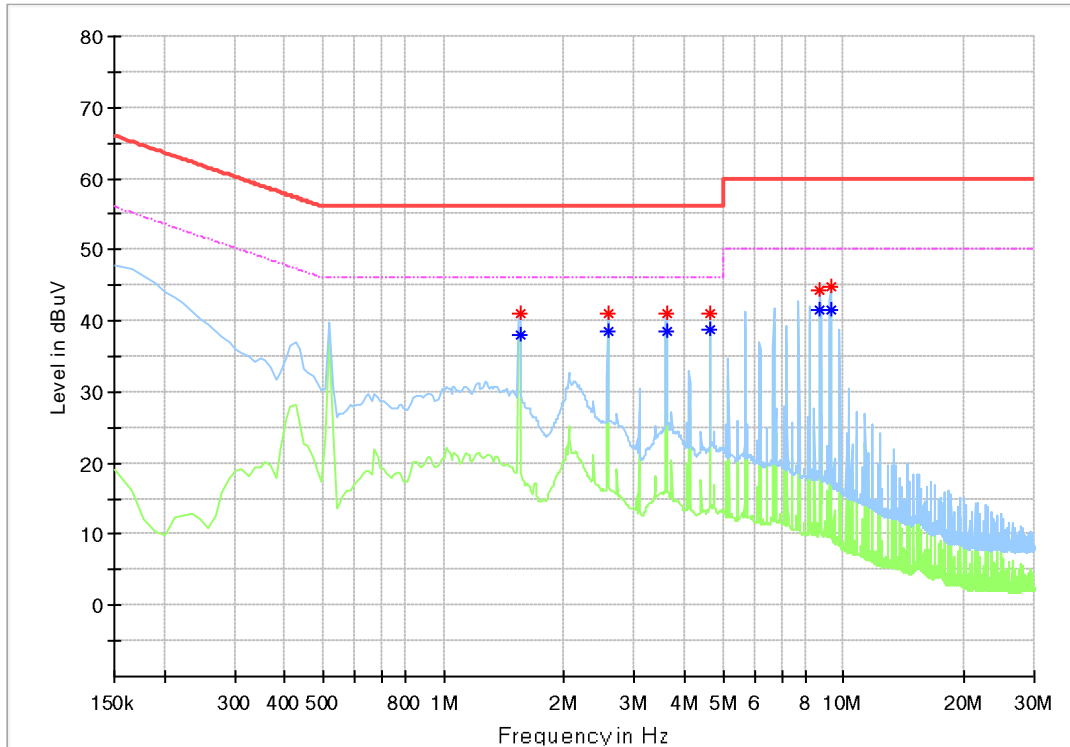
Frequency (MHz)	QuasiPeak (dBμV)	Average (dBμV)	Limit (dBμV)	Margin (dB)	Line
3.046875	15.49	---	56.00	40.51	L1
1.696875	17.63	---	56.00	38.37	L1
7.456875	19.50	---	60.00	40.50	L1
8.131875	19.76	---	60.00	40.24	L1
0.616875	22.53	---	56.00	33.47	L1
0.150000	43.62	---	66.00	22.38	L1
0.150000	---	22.23	56.00	33.77	L1
0.616875	---	19.26	46.00	26.74	L1
1.696875	---	12.97	46.00	33.03	L1
7.794375	---	15.76	50.00	34.24	L1
8.131875	---	16.12	50.00	33.88	L1
8.480625	---	15.73	50.00	34.27	L1

Figure 10: Conducted Emission, N, with Adapter No.1

Critical_Freqs

Frequency (MHz)	QuasiPeak (dB μ V)	Average (dB μ V)	Limit (dB μ V)	Margin (dB)	Line
1.696875	18.60	---	56.00	37.40	N
8.131875	20.35	---	60.00	39.65	N
7.456875	20.40	---	60.00	39.60	N
7.794375	20.61	---	60.00	39.39	N
0.616875	21.74	---	56.00	34.26	N
0.150000	43.30	---	66.00	22.70	N
0.150000	---	23.49	56.00	32.51	N
0.616875	---	18.28	46.00	27.72	N
1.696875	---	14.19	46.00	31.81	N
7.794375	---	17.40	50.00	32.60	N
8.131875	---	17.15	50.00	32.85	N
8.469375	---	17.12	50.00	32.88	N

Figure 11: Conducted Emission, L, with Adapter No.2

Critical_Freqs

Frequency (MHz)	QuasiPeak (dBµV)	Average (dBµV)	Limit (dBµV)	Margin (dB)	Line
0.515625	42.10	---	56.00	13.90	L1
4.644375	42.27	---	56.00	13.73	L1
1.550625	42.32	---	56.00	13.68	L1
3.609375	42.42	---	56.00	13.59	L1
2.585625	42.72	---	56.00	13.28	L1
9.290625	45.44	---	60.00	14.56	L1
1.550625	---	38.40	46.00	7.60	L1
2.585625	---	38.88	46.00	7.12	L1
3.609375	---	39.23	46.00	6.77	L1
4.644375	---	39.48	46.00	6.52	L1
8.773125	---	42.94	50.00	7.06	L1
9.290625	---	43.21	50.00	6.79	L1

Figure 12: Conducted Emission, N, with Adapter No.2

Critical_Freqs

Frequency (MHz)	QuasiPeak (dBμV)	Average (dBμV)	Limit (dBμV)	Margin (dB)	Line
1.550625	40.99	---	56.00	15.01	N
4.633125	41.01	---	56.00	14.99	N
2.574375	41.03	---	56.00	14.97	N
3.609375	41.08	---	56.00	14.92	N
8.750625	44.23	---	60.00	15.77	N
9.268125	44.85	---	60.00	15.15	N
1.550625	---	38.00	46.00	8.00	N
2.574375	---	38.55	46.00	7.45	N
3.609375	---	38.61	46.00	7.39	N
4.633125	---	38.89	46.00	7.11	N
8.750625	---	41.52	50.00	8.48	N
9.268125	---	41.42	50.00	8.58	N

5.3 Emission in the Frequency Range above 30MHz

5.3.1 Radiated Band-Edge

RESULT:**Pass**

Date of testing	:	2022-01-26
Ambient temperature	:	23.1°C
Relative humidity	:	46.2%
Atmospheric pressure	:	101kPa
Test requirement	:	FCC Part 15.247(d) FCC Part 15.205(a) FCC Part 15.209(a) RSS-Gen Issue 5, Amendment 2, February 2021, Clause 8.9 RSS-Gen Issue 5, Amendment 2, February 2021, Clause 8.10 RSS-247 Issue 2, February 2017, Clause 5.5
Test procedure	:	ANSI C63.10: 2013
Test voltage	:	DC 3.6V
Test modes applied	:	TM1, TM3, TM4, TM6, TM7, TM9

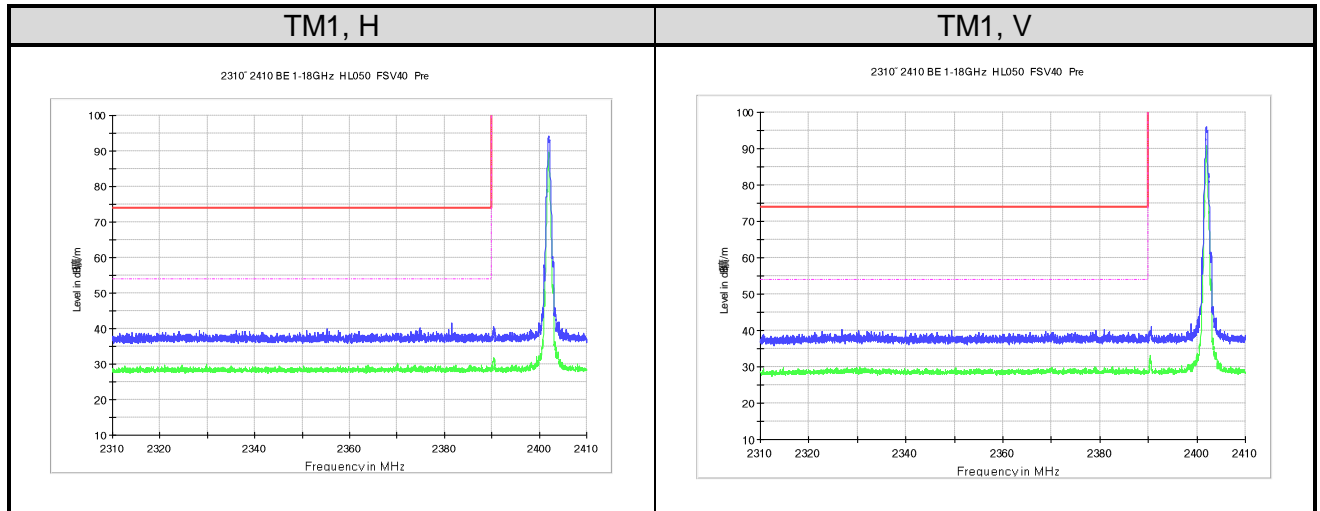
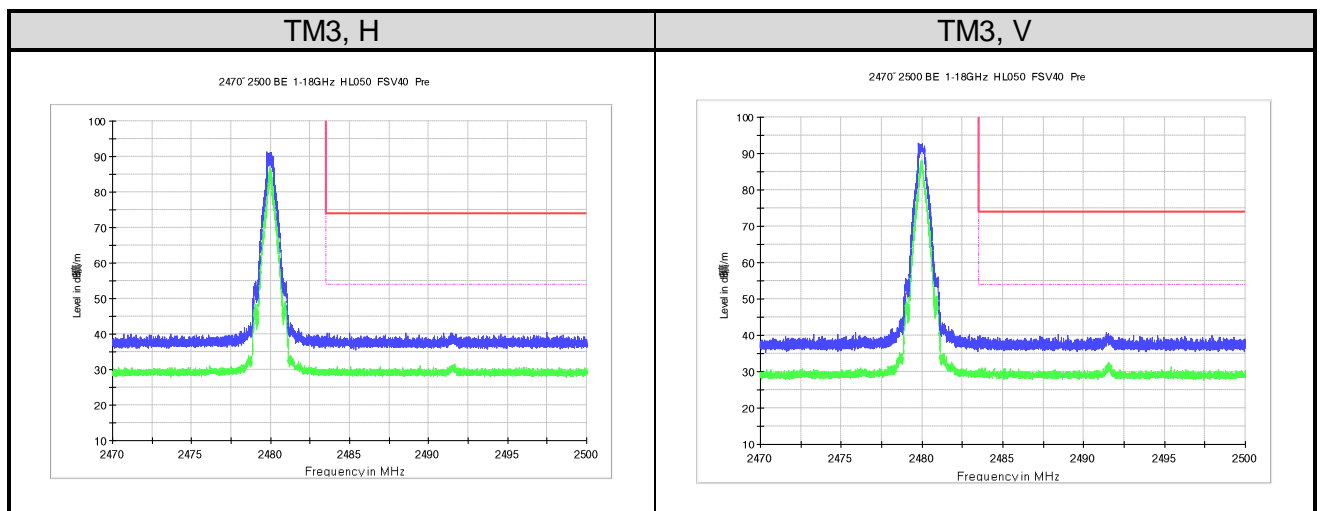
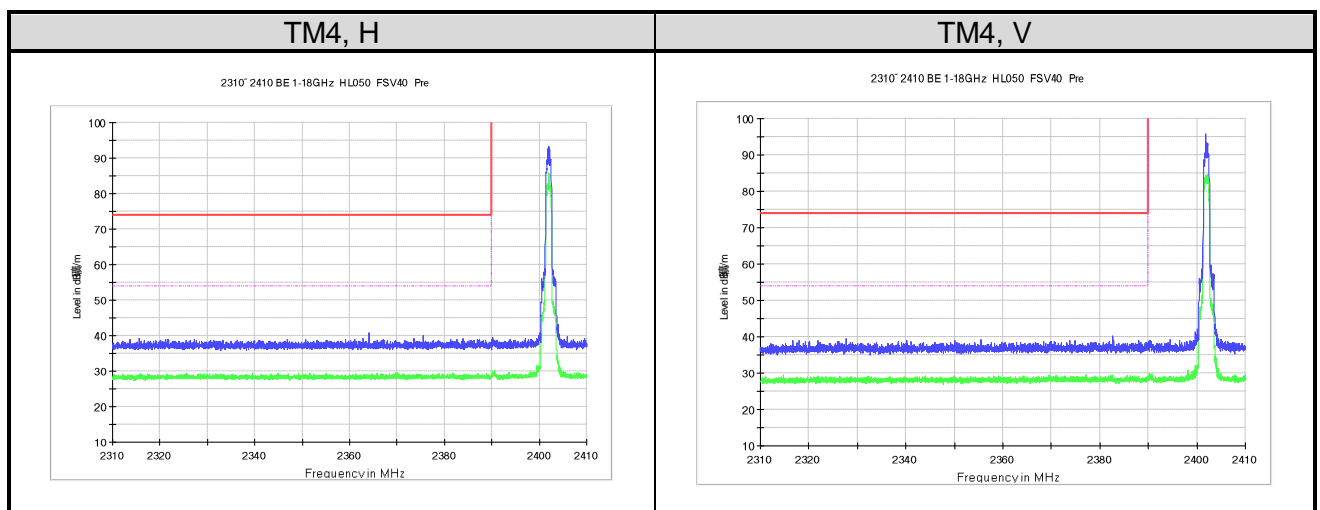
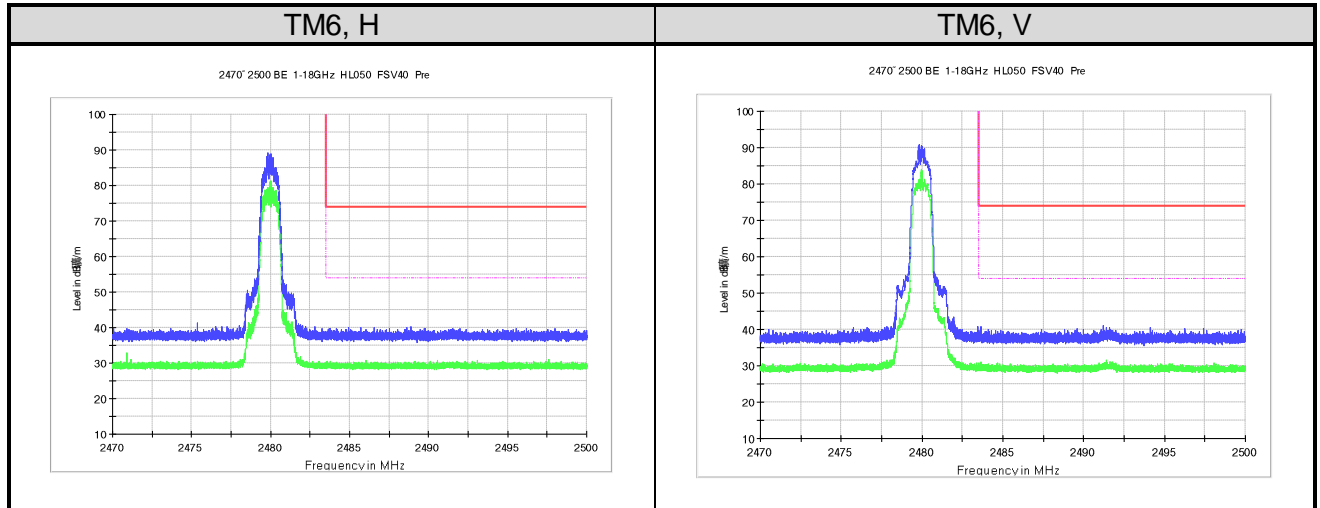
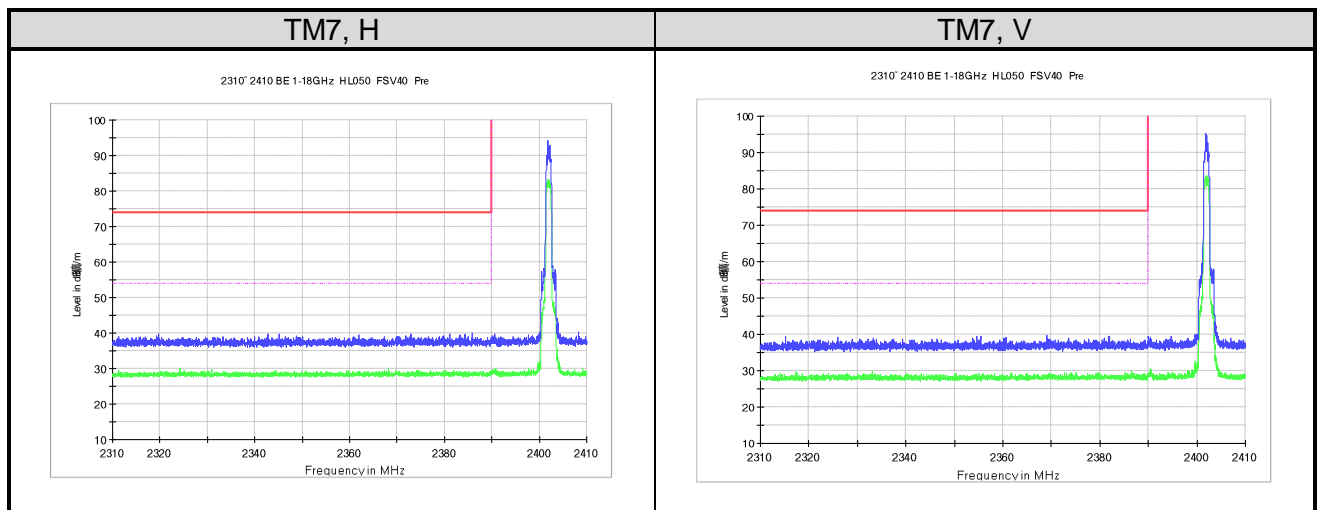
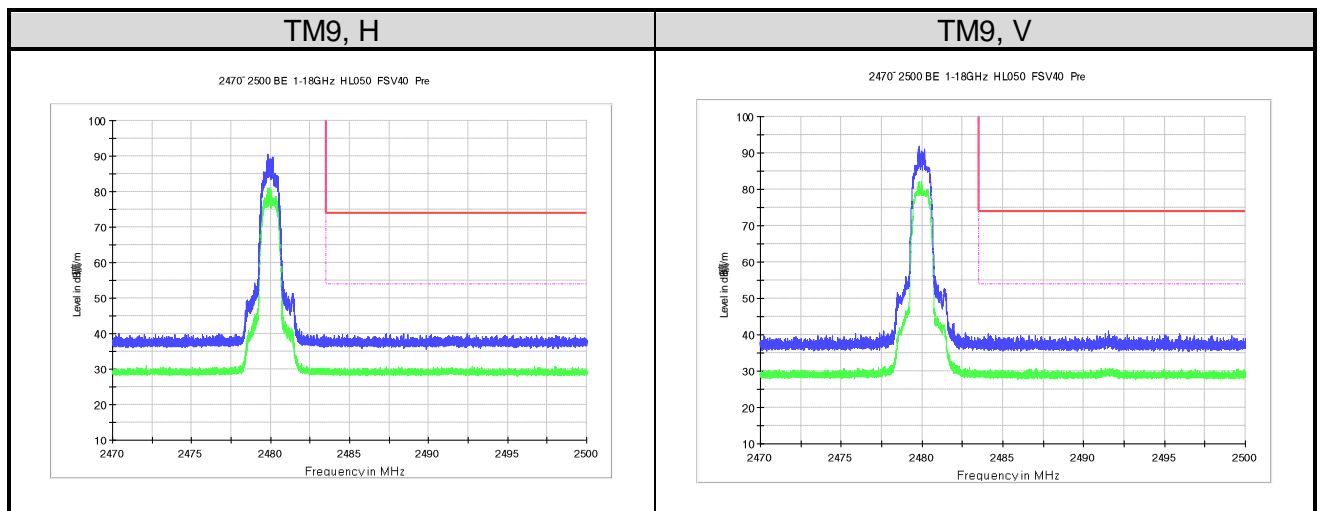
Figure 13: Radiated Band-Edge,

Figure 14: Radiated Band-Edge, TM3

Figure 15: Radiated Band-Edge, TM4


Figure 16: Radiated Band-Edge, TM6

Figure 17: Radiated Band-Edge, TM7

Figure 18: Radiated Band-Edge, TM9


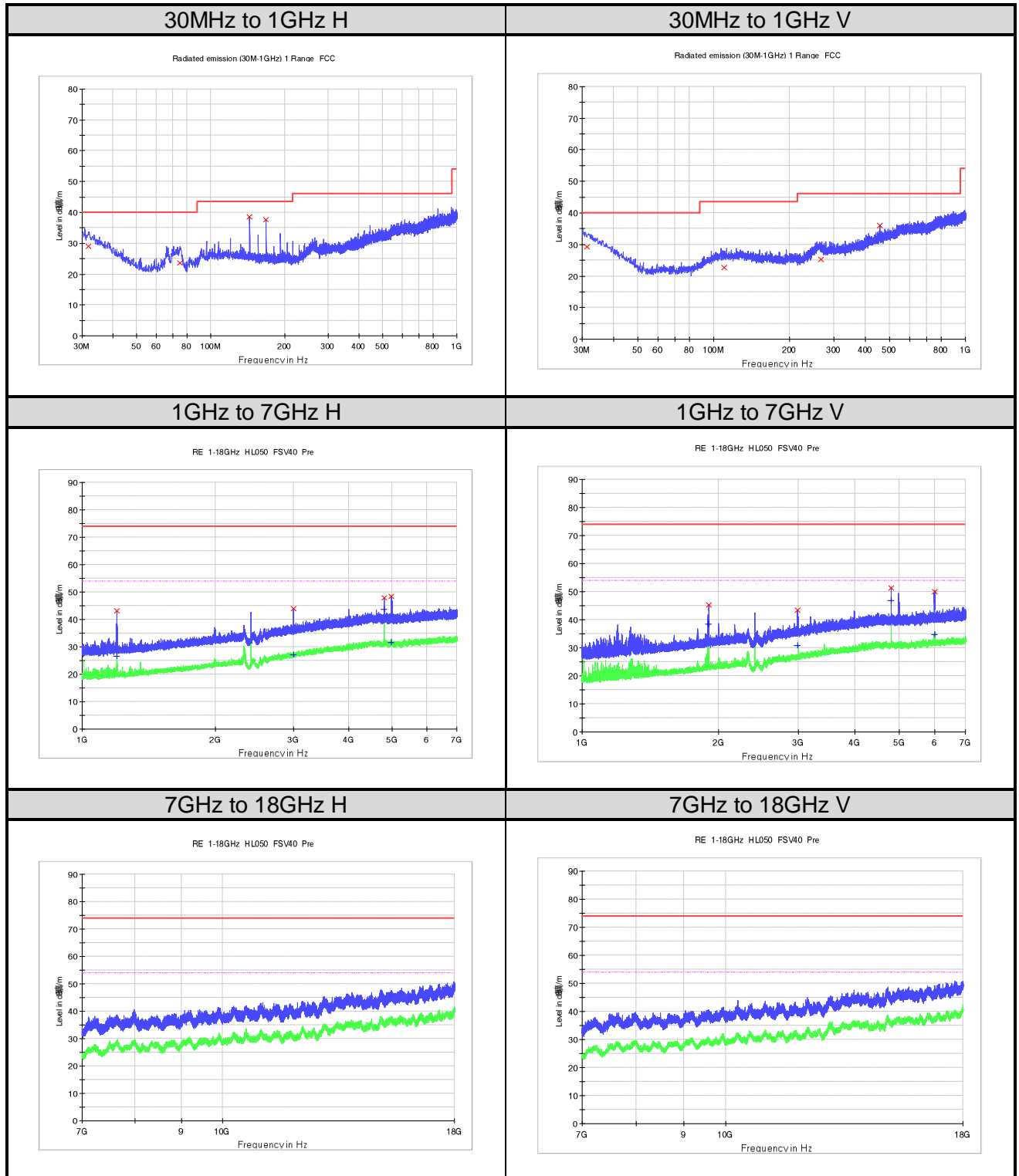
5.3.2 Radiated Spurious Emission

RESULT:**Pass**

Date of testing	:	2022-01-26~2022-02-22
Ambient temperature	:	23.1°~24.4C
Relative humidity	:	46.2~49.8%
Atmospheric pressure	:	101kPa
Test requirement	:	FCC Part 15.247(d) FCC Part 15.209(a) RSS-Gen Issue 5, Amendment 2, February 2021, Clause 8.9 RSS-247 Issue 2, February 2017, Clause 5.5
Test procedure	:	ANSI C63.10: 2013
Test voltage	:	DC 3.6V
Test modes applied	:	TM1 to TM9
Kind of test site	:	3m Anechoic Chamber

Note:

For the frequency range from 18GHz to 25GHz, no emission was found.

Figure 19: Radiated Spurious Emission, TM1


Limit and Margin
QP

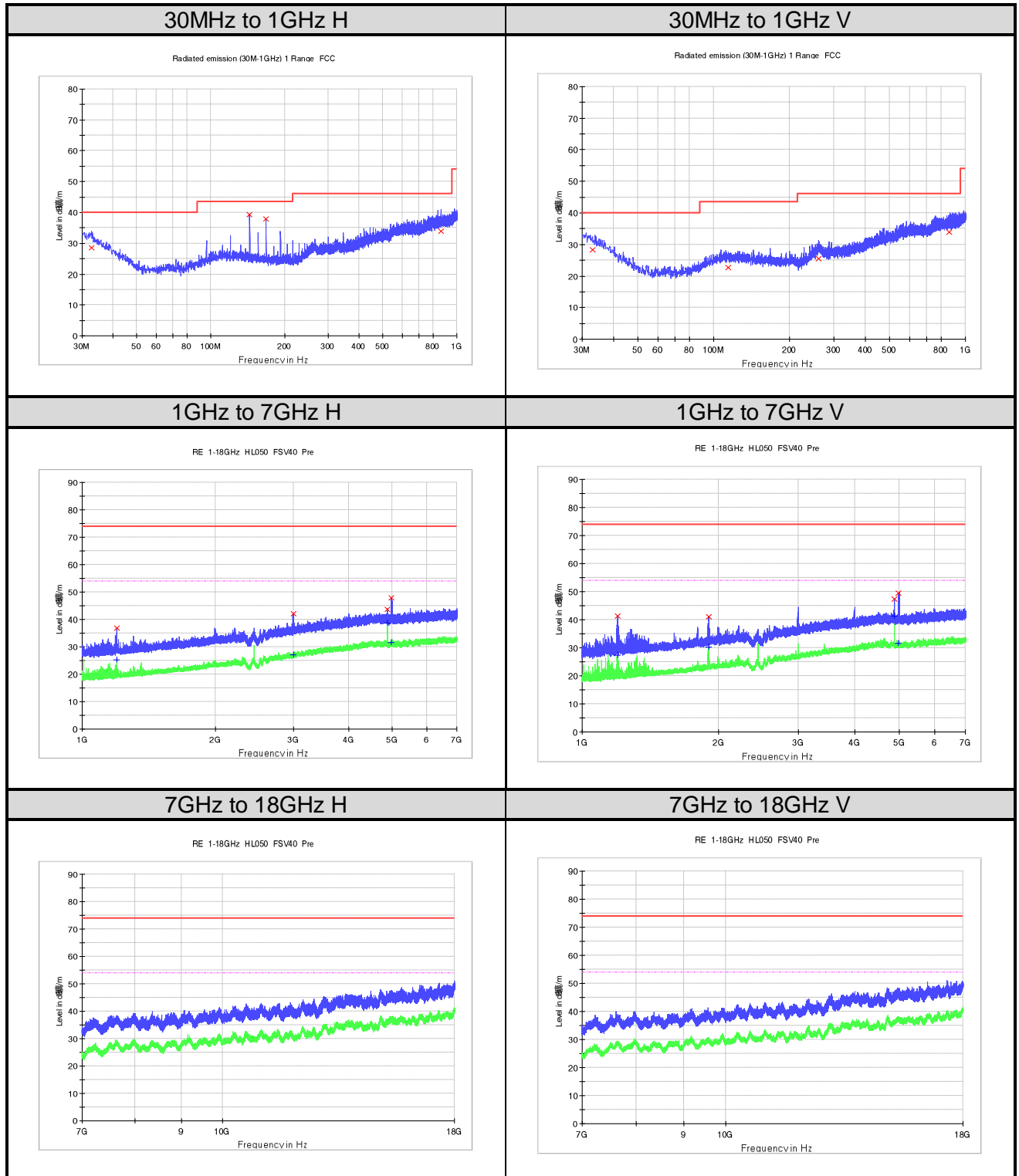
Frequency (MHz)	QuasiPeak (dB μ V/m)	Pol	Corr. (dB/m)	Margin - QPK (dB)	Limit - QPK (dB μ V/m)
31.818750	29.1	H	24.6	10.9	40.0
74.862500	23.7	H	13.2	16.3	40.0
143.975000	38.5	H	17.8	5.0	43.5
167.982500	37.7	H	16.4	5.8	43.5
31.455000	29.3	V	24.7	10.7	40.0
110.146250	22.6	V	18.5	20.9	43.5
266.558750	25.2	V	20.4	20.8	46.0
457.770000	36.0	V	24.3	10.0	46.0

PK

Frequency (MHz)	MaxPeak (dB μ V/m)	Pol	Corr. (dB/m)	Margin - PK+ (dB)	Limit - PK+ (dB μ V/m)
1197.437500	43.2	H	-21.3	30.8	74.0
2996.125000	44.0	H	-11.8	30.0	74.0
4804.000000	47.9	H	-6.5	26.1	74.0
4982.312500	48.5	H	-6.7	25.5	74.0
1899.812500	45.3	V	-16.8	28.7	74.0
2988.625000	43.5	V	-11.8	30.5	74.0
4804.000000	51.4	V	-6.5	22.6	74.0
5981.312500	50.1	V	-5.9	23.9	74.0

AV

Frequency (MHz)	Average (dB μ V/m)	Pol	Corr. (dB/m)	Margin - AVG (dB)	Limit - AVG (dB μ V/m)
1197.437500	26.5	H	-21.3	27.5	54.0
2996.125000	27.2	H	-11.8	26.8	54.0
4804.000000	43.6	H	-6.5	10.4	54.0
4982.312500	31.5	H	-6.7	22.5	54.0
1899.812500	38.4	V	-16.8	15.6	54.0
2988.625000	30.7	V	-11.8	23.3	54.0
4804.000000	46.8	V	-6.5	7.2	54.0
5981.312500	34.8	V	-5.9	19.2	54.0

Figure 20: Radiated Spurious Emission, TM2


Limit and Margin
QP

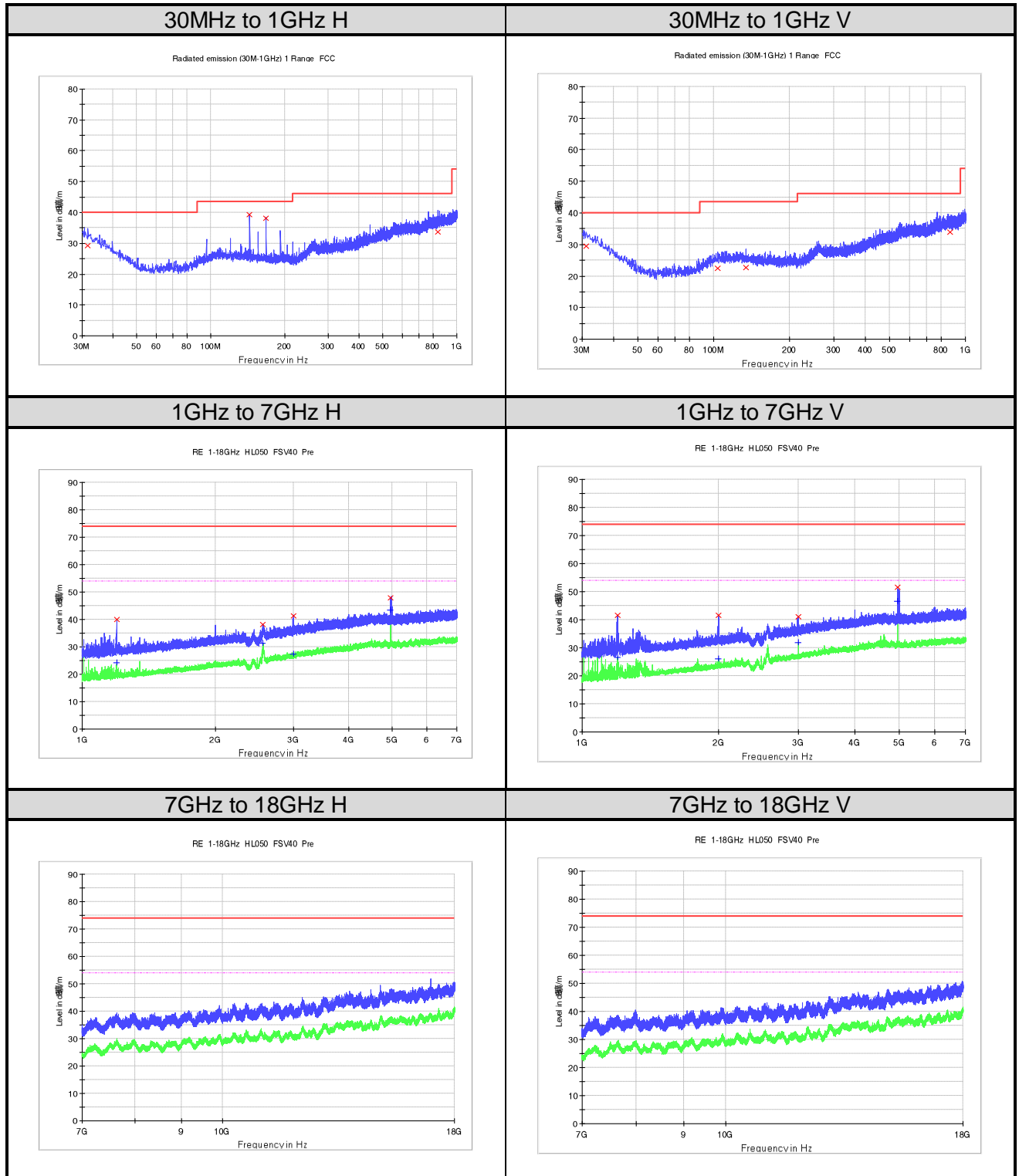
Frequency (MHz)	QuasiPeak (dB μ V/m)	Pol	Corr. (dB/m)	Margin - QPK (dB)	Limit - QPK (dB μ V/m)
32.667500	28.6	H	24.0	11.4	40.0
143.975000	39.2	H	17.8	4.3	43.5
167.982500	37.9	H	16.4	5.6	43.5
864.078750	34.0	H	27.9	12.0	46.0
32.910000	28.3	V	23.9	11.7	40.0
114.511250	22.7	V	18.6	20.8	43.5
261.466250	25.6	V	20.7	20.4	46.0
864.806250	33.8	V	27.9	12.2	46.0

PK

Frequency (MHz)	MaxPeak (dB μ V/m)	Pol	Corr. (dB/m)	Margin - PK+ (dB)	Limit - PK+ (dB μ V/m)
1197.062500	36.8	H	-21.3	37.2	74.0
2993.875000	42.1	H	-11.8	31.9	74.0
4881.625000	43.8	H	-6.5	30.2	74.0
4990.750000	47.9	H	-6.7	26.1	74.0
1196.875000	41.2	V	-21.3	32.8	74.0
1899.812500	41.1	V	-16.8	32.9	74.0
4882.000000	47.3	V	-6.5	26.7	74.0
4981.187500	49.5	V	-6.7	24.5	74.0

AV

Frequency (MHz)	Average (dB μ V/m)	Pol	Corr. (dB/m)	Margin - AVG (dB)	Limit - AVG (dB μ V/m)
1197.062500	25.3	H	-21.3	28.7	54.0
2993.875000	27.2	H	-11.8	26.8	54.0
4881.625000	38.8	H	-6.5	15.2	54.0
4990.750000	31.6	H	-6.7	22.4	54.0
1196.875000	27.4	V	-21.3	26.6	54.0
1899.812500	30.2	V	-16.8	23.8	54.0
4882.000000	41.3	V	-6.5	12.7	54.0
4981.187500	31.5	V	-6.7	22.5	54.0

Figure 21: Radiated Spurious Emission, TM3


Limit and Margin
QP

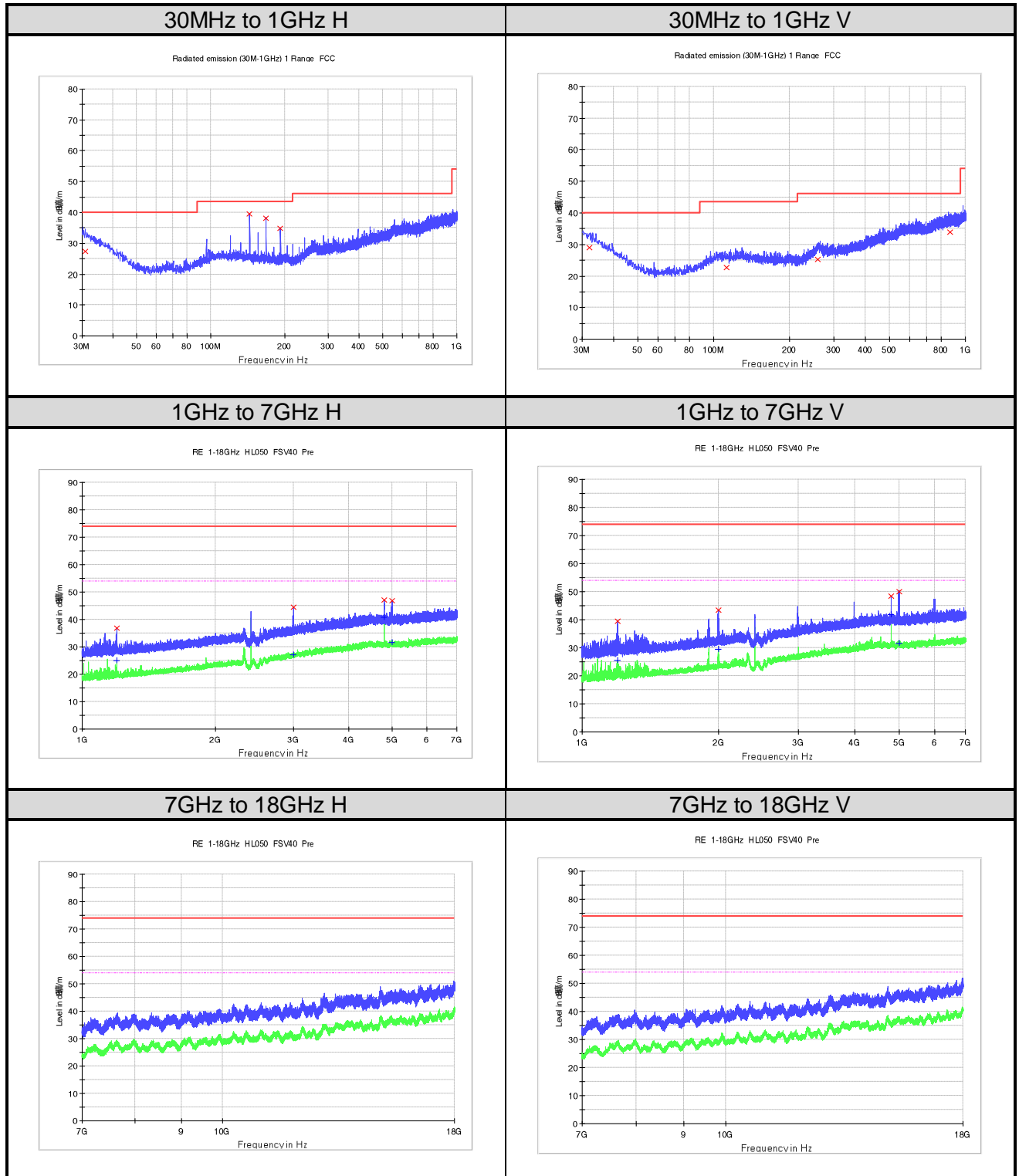
Frequency (MHz)	QuasiPeak (dB μ V/m)	Pol	Corr. (dB/m)	Margin - QPK (dB)	Limit - QPK (dB μ V/m)
31.697500	29.2	H	24.6	10.8	40.0
143.975000	39.4	H	17.8	4.1	43.5
167.982500	38.1	H	16.4	5.4	43.5
840.071250	33.6	H	27.6	12.4	46.0
31.091250	29.4	V	24.9	10.6	40.0
103.841250	22.5	V	18.1	21.0	43.5
134.275000	22.6	V	18.5	20.9	43.5
871.111250	34.0	V	28.0	12.0	46.0

PK

Frequency (MHz)	MaxPeak (dB μ V/m)	Pol	Corr. (dB/m)	Margin - PK+ (dB)	Limit - PK+ (dB μ V/m)
1195.375000	40.1	H	-21.3	33.9	74.0
2557.375000	38.1	H	-13.9	35.9	74.0
2995.375000	41.4	H	-11.8	32.6	74.0
4960.000000	47.8	H	-6.6	26.2	74.0
1198.562500	41.6	V	-21.2	32.4	74.0
2000.125000	41.5	V	-16.2	32.5	74.0
2996.687500	41.0	V	-11.8	33.0	74.0
4959.812500	51.6	V	-6.6	22.4	74.0

AV

Frequency (MHz)	Average (dB μ V/m)	Pol	Corr. (dB/m)	Margin - AVG (dB)	Limit - AVG (dB μ V/m)
1195.375000	24.2	H	-21.3	29.8	54.0
2557.375000	31.2	H	-13.9	22.8	54.0
2995.375000	27.5	H	-11.8	26.5	54.0
4960.000000	43.3	H	-6.6	10.7	54.0
1198.562500	26.5	V	-21.2	27.5	54.0
2000.125000	26.1	V	-16.2	27.9	54.0
2996.687500	31.9	V	-11.8	22.1	54.0
4959.812500	46.7	V	-6.6	7.3	54.0

Figure 22: Radiated Spurious Emission, TM4


Limit and Margin
QP

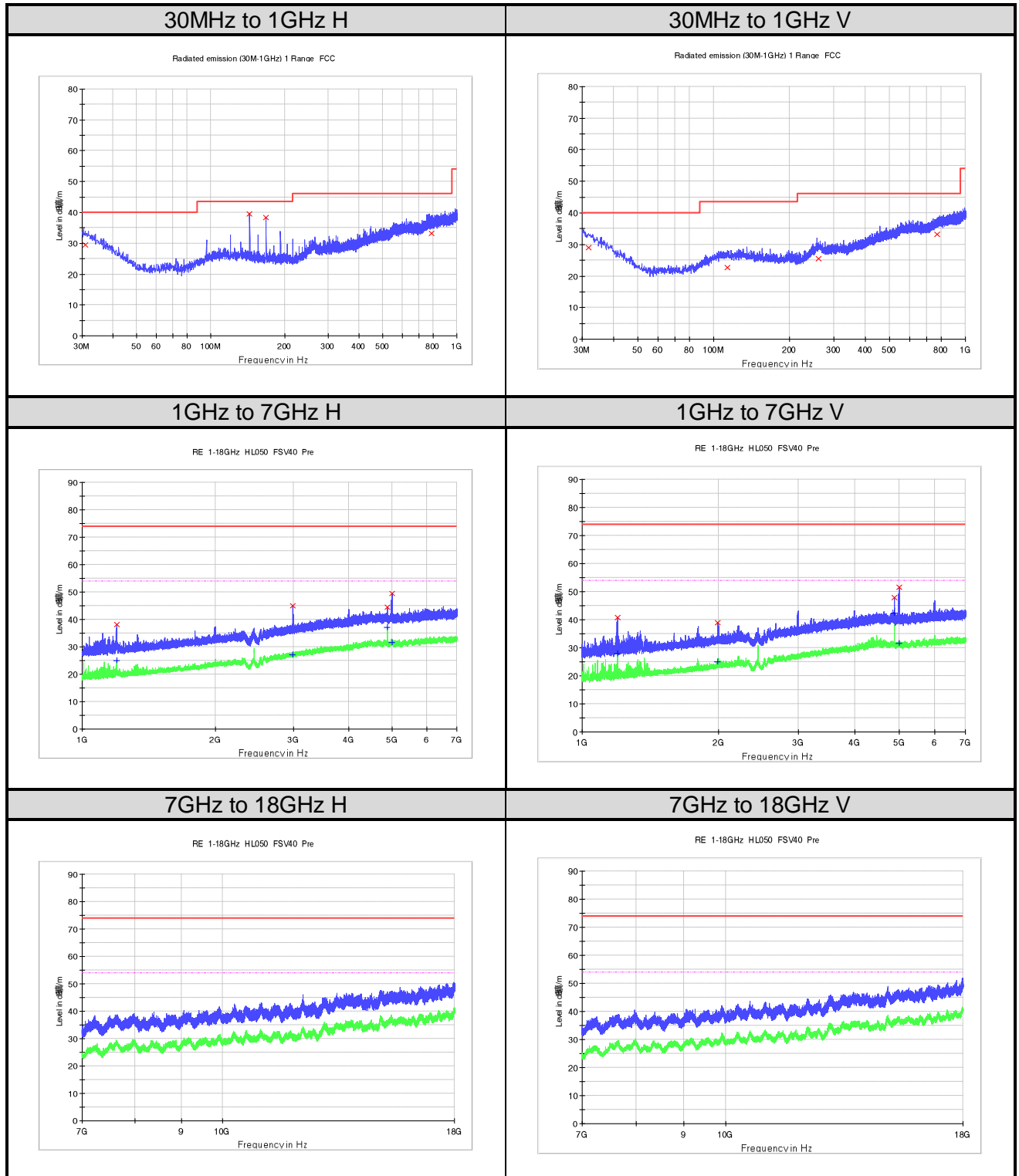
Frequency (MHz)	QuasiPeak (dB μ V/m)	Pol	Corr. (dB/m)	Margin - QPK (dB)	Limit - QPK (dB μ V/m)
30.848750	27.3	H	25.0	12.7	40.0
143.975000	39.5	H	17.8	4.0	43.5
167.982500	38.2	H	16.4	5.3	43.5
191.990000	34.9	H	15.9	8.6	43.5
32.061250	29.0	V	24.5	11.0	40.0
112.086250	22.7	V	18.5	20.8	43.5
258.192500	25.3	V	20.4	20.7	46.0
869.777500	33.9	V	28.0	12.1	46.0

PK

Frequency (MHz)	MaxPeak (dB μ V/m)	Pol	Corr. (dB/m)	Margin - PK+ (dB)	Limit - PK+ (dB μ V/m)
1198.562500	36.8	H	-21.2	37.2	74.0
2994.062500	44.5	H	-11.8	29.5	74.0
4804.187500	47.0	H	-6.5	27.0	74.0
4998.437500	46.9	H	-6.7	27.1	74.0
1195.562500	39.4	V	-21.3	34.6	74.0
1994.312500	43.3	V	-16.3	30.7	74.0
4803.625000	48.3	V	-6.5	25.7	74.0
4995.437500	50.1	V	-6.7	23.9	74.0

AV

Frequency (MHz)	Average (dB μ V/m)	Pol	Corr. (dB/m)	Margin - AVG (dB)	Limit - AVG (dB μ V/m)
1198.562500	24.9	H	-21.2	29.1	54.0
2994.062500	27.2	H	-11.8	26.8	54.0
4804.187500	40.8	H	-6.5	13.2	54.0
4998.437500	31.7	H	-6.7	22.3	54.0
1195.562500	25.4	V	-21.3	28.6	54.0
1994.312500	29.4	V	-16.3	24.6	54.0
4803.625000	41.8	V	-6.5	12.2	54.0
4995.437500	31.6	V	-6.7	22.4	54.0

Figure 23: Radiated Spurious Emission, TM5


Limit and Margin
QP

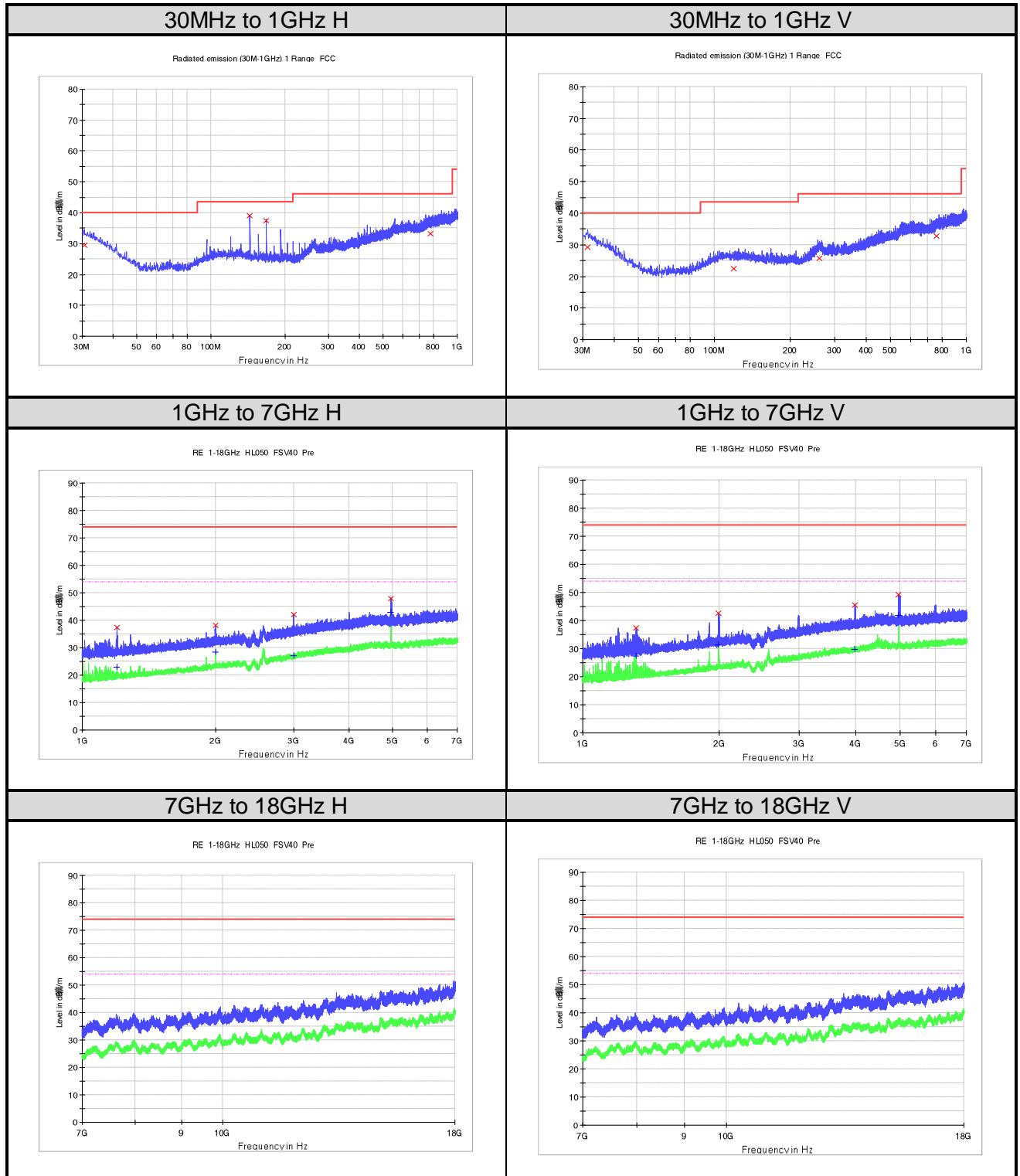
Frequency (MHz)	QuasiPeak (dB μ V/m)	Pol	Corr. (dB/m)	Margin - QPK (dB)	Limit - QPK (dB μ V/m)
30.848750	29.4	H	25.0	10.6	40.0
143.975000	39.6	H	17.8	3.9	43.5
167.982500	38.3	H	16.4	5.2	43.5
786.842500	33.2	H	27.5	12.8	46.0
31.818750	29.1	V	24.6	10.9	40.0
113.541250	22.8	V	18.6	20.7	43.5
260.253750	25.6	V	20.7	20.4	46.0
771.928750	33.1	V	27.4	12.9	46.0

PK

Frequency (MHz)	MaxPeak (dB μ V/m)	Pol	Corr. (dB/m)	Margin - PK+ (dB)	Limit - PK+ (dB μ V/m)
1198.750000	38.1	H	-21.2	35.9	74.0
2986.750000	45.0	H	-11.8	29.0	74.0
4882.187500	44.4	H	-6.5	29.6	74.0
4998.437500	49.5	H	-6.7	24.5	74.0
1198.937500	40.8	V	-21.2	33.2	74.0
1993.937500	38.9	V	-16.3	35.1	74.0
4882.000000	47.8	V	-6.5	26.2	74.0
4998.062500	51.5	V	-6.7	22.5	74.0

AV

Frequency (MHz)	Average (dB μ V/m)	Pol	Corr. (dB/m)	Margin - AVG (dB)	Limit - AVG (dB μ V/m)
1198.750000	25.0	H	-21.2	29.0	54.0
2986.750000	27.2	H	-11.8	26.8	54.0
4882.187500	37.1	H	-6.5	16.9	54.0
4998.437500	31.7	H	-6.7	22.3	54.0
1198.937500	28.0	V	-21.2	26.0	54.0
1993.937500	25.1	V	-16.3	28.9	54.0
4882.000000	42.4	V	-6.5	11.6	54.0
4998.062500	31.7	V	-6.7	22.3	54.0

Figure 24: Radiated Spurious Emission, TM6


Limit and Margin
QP

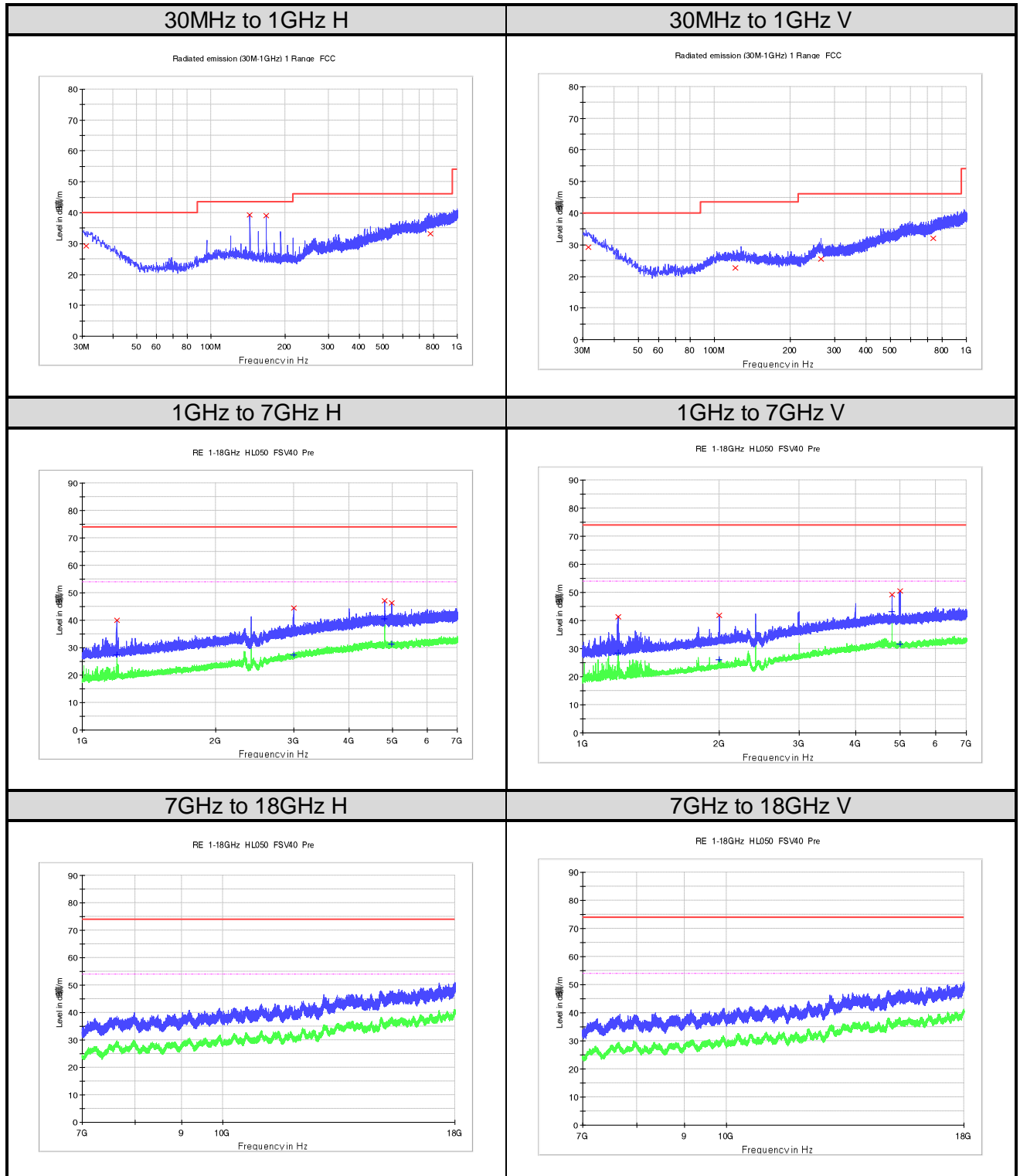
Frequency (MHz)	QuasiPeak (dB μ V/m)	Pol	Corr. (dB/m)	Margin - QPK (dB)	Limit - QPK (dB μ V/m)
30.606250	29.6	H	25.1	10.4	40.0
143.975000	39.1	H	17.8	4.4	43.5
167.982500	37.5	H	16.4	6.0	43.5
780.052500	33.2	H	27.2	12.8	46.0
31.455000	29.2	V	24.7	10.8	40.0
118.876250	22.5	V	18.4	21.0	43.5
260.253750	25.7	V	20.7	20.3	46.0
761.258750	32.8	V	27.2	13.2	46.0

PK

Frequency (MHz)	MaxPeak (dB μ V/m)	Pol	Corr. (dB/m)	Margin - PK+ (dB)	Limit - PK+ (dB μ V/m)
1199.500000	37.4	H	-21.2	36.6	74.0
1996.750000	38.1	H	-16.2	35.9	74.0
2996.875000	42.2	H	-11.8	31.8	74.0
4960.000000	48.0	H	-6.6	26.0	74.0
1311.250000	37.4	V	-20.4	36.6	74.0
1991.500000	42.7	V	-16.3	31.3	74.0
3982.750000	45.5	V	-8.5	28.5	74.0
4959.812500	49.2	V	-6.6	24.8	74.0

AV

Frequency (MHz)	Average (dB μ V/m)	Pol	Corr. (dB/m)	Margin - AVG (dB)	Limit - AVG (dB μ V/m)
1199.500000	22.9	H	-21.2	31.1	54.0
1996.750000	28.3	H	-16.2	25.7	54.0
2996.875000	27.2	H	-11.8	26.8	54.0
4960.000000	42.9	H	-6.6	11.1	54.0
1311.250000	27.4	V	-20.4	26.6	54.0
1991.500000	31.2	V	-16.3	22.8	54.0
3982.750000	29.8	V	-8.5	24.2	54.0
4959.812500	41.8	V	-6.6	12.2	54.0

Figure 25: Radiated Spurious Emission, TM7


Limit and Margin
QP

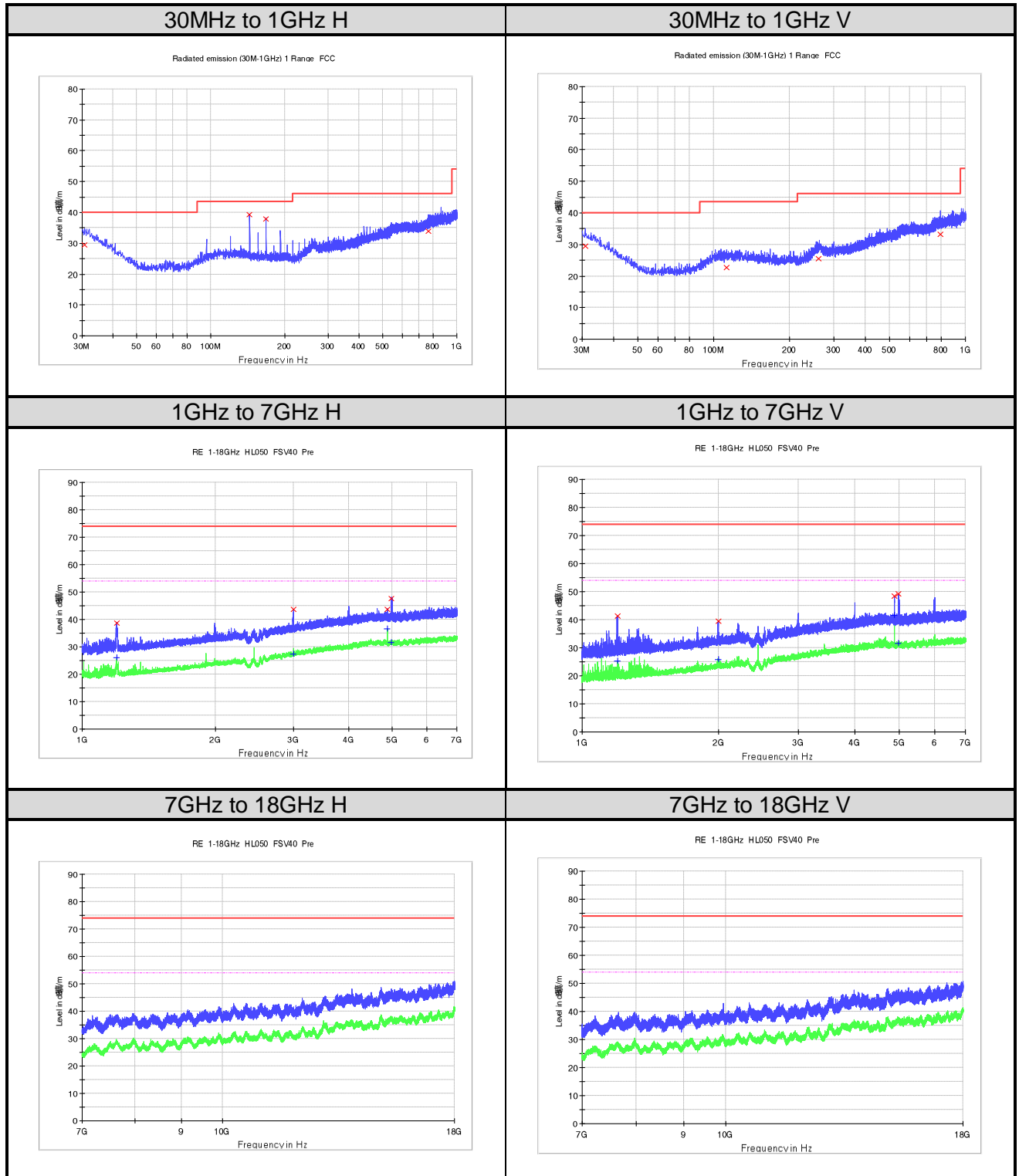
Frequency (MHz)	QuasiPeak (dB μ V/m)	Pol	Corr. (dB/m)	Margin - QPK (dB)	Limit - QPK (dB μ V/m)
31.212500	29.4	H	24.8	10.6	40.0
143.975000	39.2	H	17.8	4.3	43.5
167.982500	39.0	H	16.4	4.5	43.5
780.052500	33.1	H	27.2	12.9	46.0
31.576250	29.2	V	24.7	10.8	40.0
120.937500	22.7	V	18.5	20.8	43.5
264.982500	25.5	V	20.7	20.5	46.0
737.615000	32.1	V	27.0	13.9	46.0

PK

Frequency (MHz)	MaxPeak (dB μ V/m)	Pol	Corr. (dB/m)	Margin - PK+ (dB)	Limit - PK+ (dB μ V/m)
1196.875000	39.9	H	-21.3	34.1	74.0
2994.625000	44.5	H	-11.8	29.5	74.0
4803.812500	47.1	H	-6.5	26.9	74.0
4987.000000	46.4	H	-6.7	27.6	74.0
1196.875000	41.4	V	-21.3	32.6	74.0
1995.812500	41.9	V	-16.2	32.1	74.0
4804.000000	49.1	V	-6.5	24.9	74.0
4999.375000	50.6	V	-6.7	23.4	74.0

AV

Frequency (MHz)	Average (dB μ V/m)	Pol	Corr. (dB/m)	Margin - AVG (dB)	Limit - AVG (dB μ V/m)
1196.875000	27.3	H	-21.3	26.7	54.0
2994.625000	27.4	H	-11.8	26.6	54.0
4803.812500	40.6	H	-6.5	13.4	54.0
4987.000000	31.3	H	-6.7	22.7	54.0
1196.875000	28.3	V	-21.3	25.7	54.0
1995.812500	26.0	V	-16.2	28.0	54.0
4804.000000	43.2	V	-6.5	10.8	54.0
4999.375000	31.7	V	-6.7	22.3	54.0

Figure 26: Radiated Spurious Emission, TM8


Limit and Margin
QP

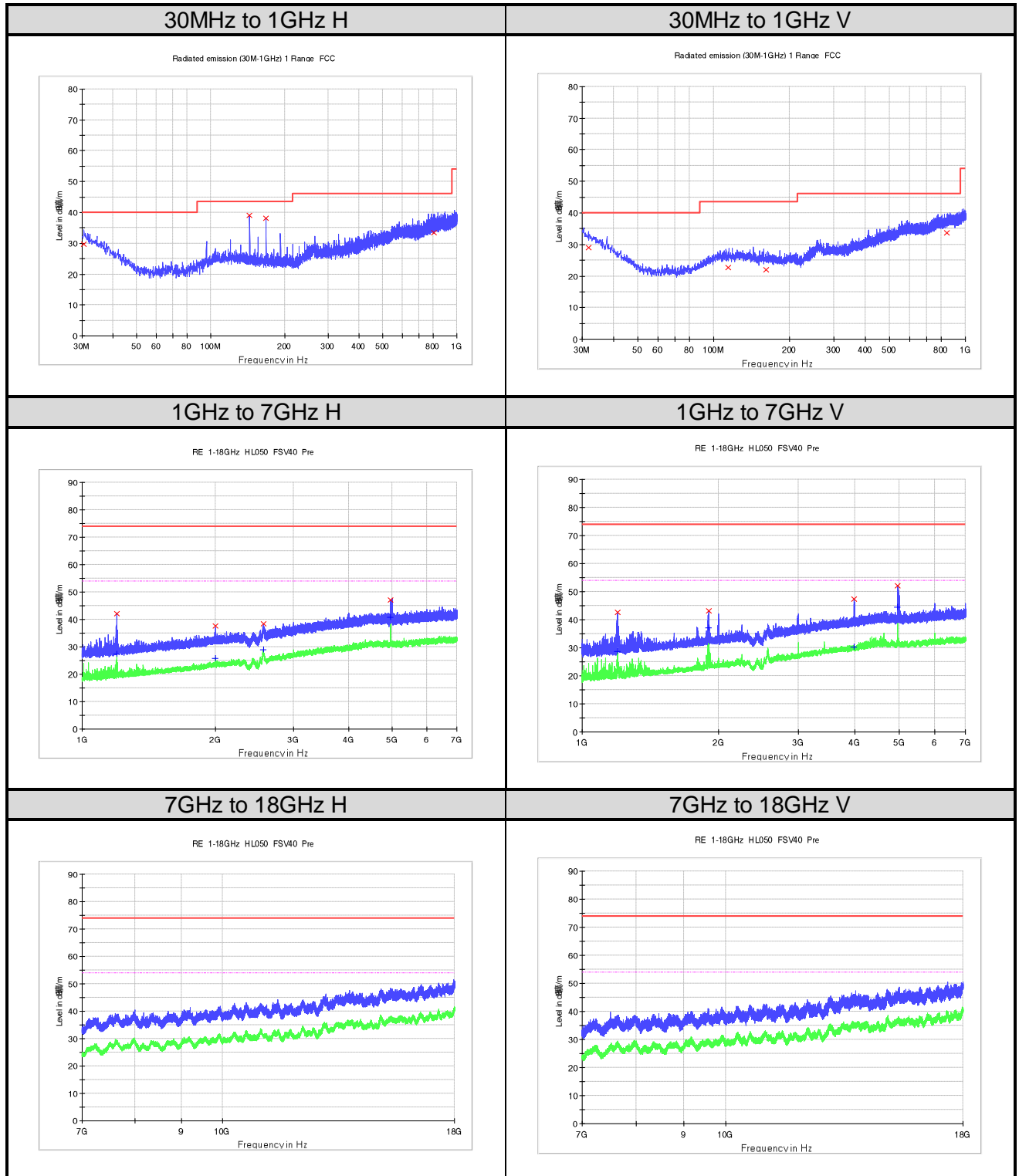
Frequency (MHz)	QuasiPeak (dBµV/m)	Pol	Corr. (dB/m)	Margin - QPK (dB)	Limit - QPK (dBµV/m)
30.727500	29.6	H	25.0	10.4	40.0
143.975000	39.4	H	17.8	4.1	43.5
167.982500	38.0	H	16.4	5.5	43.5
768.048750	33.8	H	27.4	12.2	46.0
30.848750	29.5	V	25.0	10.5	40.0
112.692500	22.7	V	18.6	20.8	43.5
260.617500	25.6	V	20.7	20.4	46.0
792.783750	33.3	V	27.6	12.7	46.0

PK

Frequency (MHz)	MaxPeak (dBµV/m)	Pol	Corr. (dB/m)	Margin - PK+ (dB)	Limit - PK+ (dBµV/m)
1196.312500	38.8	H	-21.3	35.2	74.0
2995.375000	43.7	H	-11.8	30.3	74.0
4881.625000	43.8	H	-6.5	30.2	74.0
4977.625000	47.6	H	-6.7	26.4	74.0
1195.937500	41.2	V	-21.3	32.8	74.0
1994.312500	39.4	V	-16.3	34.6	74.0
4882.187500	48.3	V	-6.5	25.7	74.0
4977.437500	49.1	V	-6.7	24.9	74.0

AV

Frequency (MHz)	Average (dBµV/m)	Pol	Corr. (dB/m)	Margin - AVG (dB)	Limit - AVG (dBµV/m)
1196.312500	26.0	H	-21.3	28.0	54.0
2995.375000	27.3	H	-11.8	26.7	54.0
4881.625000	36.5	H	-6.5	17.5	54.0
4977.625000	31.5	H	-6.7	22.5	54.0
1195.937500	25.3	V	-21.3	28.7	54.0
1994.312500	25.7	V	-16.3	28.3	54.0
4882.187500	41.7	V	-6.5	12.3	54.0
4977.437500	31.5	V	-6.7	22.5	54.0

Figure 27: Radiated Spurious Emission, TM9


Limit and Margin
QP

Frequency (MHz)	QuasiPeak (dBµV/m)	Pol	Corr. (dB/m)	Margin - QPK (dB)	Limit - QPK (dBµV/m)
30.485000	29.7	H	25.2	10.3	40.0
143.975000	39.0	H	17.8	4.5	43.5
167.982500	38.1	H	16.4	5.4	43.5
808.182500	33.3	H	27.5	12.7	46.0
31.818750	29.1	V	24.6	10.9	40.0
114.147500	22.7	V	18.5	20.8	43.5
161.798750	22.0	V	16.7	21.5	43.5
845.285000	33.7	V	27.8	12.3	46.0

PK

Frequency (MHz)	MaxPeak (dBµV/m)	Pol	Corr. (dB/m)	Margin - PK+ (dB)	Limit - PK+ (dBµV/m)
1195.750000	42.2	H	-21.3	31.8	74.0
1994.687500	37.5	H	-16.2	36.5	74.0
2567.125000	38.4	H	-13.8	35.6	74.0
4960.375000	47.0	H	-6.6	27.0	74.0
1199.500000	42.6	V	-21.2	31.4	74.0
1900.187500	43.1	V	-16.8	30.9	74.0
3984.437500	47.4	V	-8.4	26.6	74.0
4959.625000	52.0	V	-6.6	22.0	74.0

AV

Frequency (MHz)	Average (dBµV/m)	Pol	Corr. (dB/m)	Margin - AVG (dB)	Limit - AVG (dBµV/m)
1195.750000	27.5	H	-21.3	26.5	54.0
1994.687500	25.9	H	-16.2	28.1	54.0
2567.125000	29.0	H	-13.8	25.0	54.0
4960.375000	40.9	H	-6.6	13.1	54.0
1199.500000	28.8	V	-21.2	25.2	54.0
1900.187500	37.0	V	-16.8	17.0	54.0
3984.437500	30.3	V	-8.4	23.7	54.0
4959.625000	44.4	V	-6.6	9.6	54.0

6. List of Tables

Table 1: List of Test and Measurement Equipment	5
Table 2: Measurement Uncertainty	6
Table 3: Technical Specification of EUT	7
Table 4: Independent Operation Modes.....	8
Table 5: Power parameter value.....	9
Table 6: Auxiliary Equipment.....	9
Table 7: Antenna Requirement.....	10
Table 8: 20dB & 99% Bandwidth	12
Table 9: Peak Output Power	15
Table 10: Frequency Separation	18
Table 11: Number of Hopping Frequency	21
Table 12: Time of Occupancy, TM10 to TM18	23

7. List of Figures

Figure 1: 20dB & 99% Bandwidth	13
Figure 2: Peak Output Power, TM1 to TM9.....	16
Figure 3: Frequency Separation	19
Figure 4: Number of Hopping Frequency	21
Figure 5: Time of Occupancy, TM10 to TM18.....	24
Figure 6: Reference Level	27
Figure 7: Conducted Band Edge	29
Figure 8: Conducted Spurious Emission.....	31
Figure 9: Conducted Emission, L, with Adapter No.1	34
Figure 10: Conducted Emission, N, with Adapter No.1.....	35
Figure 11: Conducted Emission, L, with Adapter No.2	36
Figure 12: Conducted Emission, N, with Adapter No.2.....	37
Figure 13: Radiated Band-Edge,	39
Figure 14: Radiated Band-Edge, TM3	39
Figure 15: Radiated Band-Edge, TM4	39
Figure 16: Radiated Band-Edge, TM6	40
Figure 17: Radiated Band-Edge, TM7	40
Figure 18: Radiated Band-Edge, TM9	40
Figure 19: Radiated Spurious Emission, TM1	42
Figure 20: Radiated Spurious Emission, TM2	44
Figure 21: Radiated Spurious Emission, TM3	46
Figure 22: Radiated Spurious Emission, TM4	48
Figure 23: Radiated Spurious Emission, TM5	50
Figure 24: Radiated Spurious Emission, TM6	52
Figure 25: Radiated Spurious Emission, TM7	54
Figure 26: Radiated Spurious Emission, TM8	56
Figure 27: Radiated Spurious Emission, TM9	58