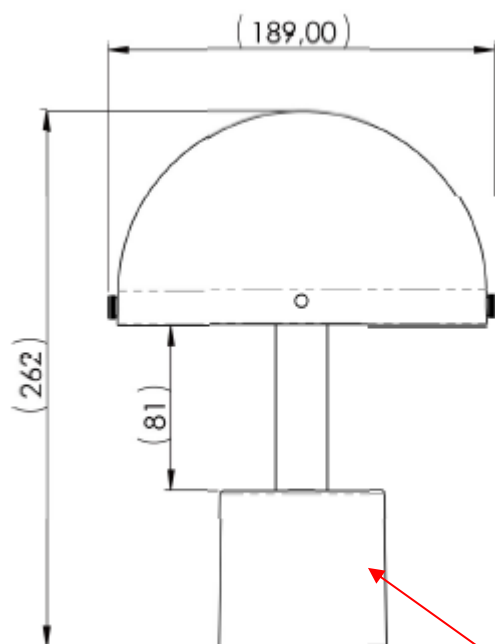


B2304 Nödmast – label location



Type No. B2304 NÖDMAST

Input: 5V DC 4.5 W

Battery Input: 4.8V DC 0.75W

Conforms to: UL Std 153 Certified to: CSA Std C22.2 No. 250.4 CAN ICES-005 (B) / NMB-005 (B) FCC ID: FHO-B2304 This device complies with Part 15 of the FCC Rules. Operation is subject to the following two conditions: (1) this device may not cause harmful interference, and (2) this device must accept any interference received, including interference that may cause undesired operation.



Made in China

IKEA of Sweden AB, SE - 34381 Älmhult
© Inter IKEA Systems B.V. 2019

22217

