

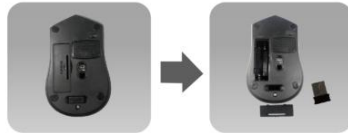
User Manual

Model: XCK2-1001

FCC ID:FGOXWM2-1001

Operation:

*Take out the receiver. (The receiver of this wireless product is in the battery compartment at the bottom of the mouse)



*Plug the mini wireless receiver into the USB port.

*Now you can use and enjoy your wireless mouse

Mouse Specifications:

2.4G wireless mouse

Mouse size: 10*6.5*3.8CM

Operating distance up to 10 meters

Operating Voltage: 3 V

Battery: AAA*2pcs

Working Current: 3mA \pm 100uA

Standby: 900uA, standby time is around 10s.

Sleeping Current: 80uA

Note:

The mouse will turn off by itself when about 10 minutes without use. Just press a key or the mouse scroll and return to its operation. Please turn it off when not in use for a long time.

NOTE: This equipment has been tested and found to comply with the limits for a Class B digital device, pursuant to part 15 of the FCC Rules. These limits are designed to provide reasonable protection against harmful interference in a residential installation. This equipment generates, uses and can radiate radio frequency energy and, if not installed and used in accordance with the instructions, may cause harmful interference to radio communications. However, there is no guarantee that interference will not occur in a particular installation. If this equipment does cause harmful interference to radio or television reception, which can be determined by turning the equipment off and on, the user is encouraged to try to correct the interference by one or more of the following measures:

- Reorient or relocate the receiving antenna.
- Increase the separation between the equipment and receiver.
- Connect the equipment into an outlet on a circuit different from that to which the receiver is connected.
- Consult the dealer or an experienced radio/TV technician for help.

This device complies with part 15 of the FCC rules. Operation is subject to the following two conditions:

- (1) this device may not cause harmful interference, and
- (2) this device must accept any interference received, including interference that may cause undesired operation.

Changes or modifications to this unit not expressly approved by the party responsible for compliance could void the user's authority to operate the equipment.