

iBUFFALO

BSMBW03

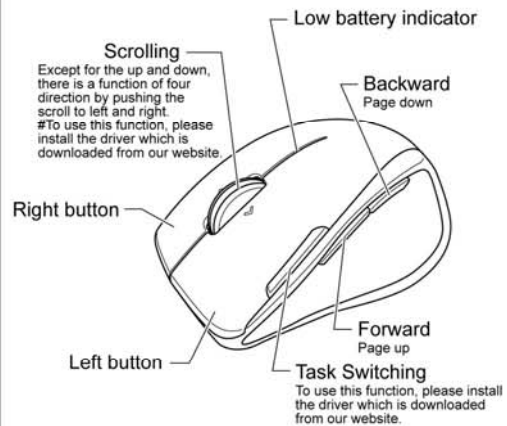
2.4G BLUE LED MOUSE

User's Manual



Name of Parts

● Mouse



● Nano receiver



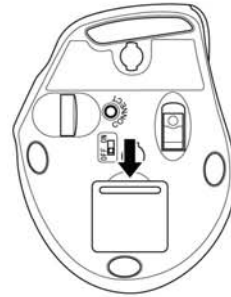
● User's manual

● Batteries X2



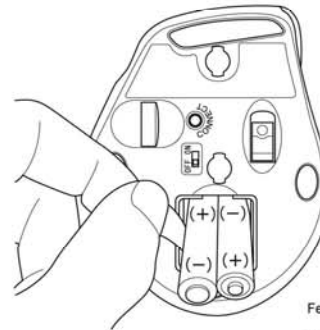
Use instruction of product

1. Open the battery cover



2. Insert two batteries into the battery compartment

Make sure the positive(+) and negative(-) is on the right direction Removing the battery with sheet



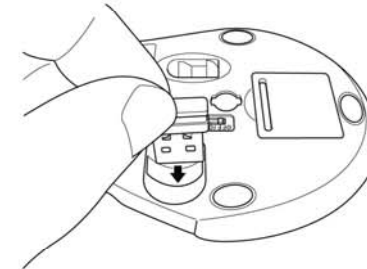
3. Close the battery cover

4. Switch to the ON mode



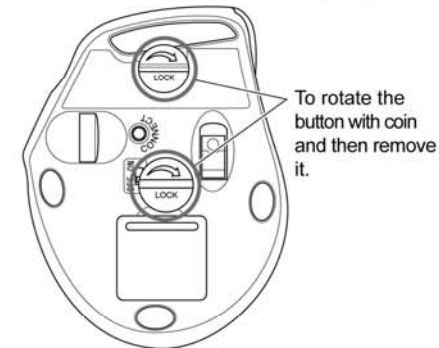
The Storage of receiver

The space of bottom is designed for the storage of receiver that avoids the loss of receiver.



Others

- The button of bottom shows as below picture is used to fix the body and package.
- The button is useless which using the product.



Federal Communication Commission Interference Statement

This equipment has been tested and found to comply with the limits for a Class B digital device, pursuant to Part 15 of the FCC Rules. These limits are designed to provide reasonable protection against harmful interference in a residential installation. This equipment generates, uses and can radiate radio frequency energy and, if not installed and used in accordance with the instructions, may cause harmful interference to radio communications. However, there is no guarantee that interference will not occur in a particular installation. If this equipment does cause harmful interference to radio or television reception, which can be determined by turning the equipment off and on, the user is encouraged to try to correct the interference by one of the following measures:

- Reorient or relocate the receiving antenna.
- Increase the separation between the equipment and receiver.
- Connect the equipment into an outlet on a circuit different from that to which the receiver is connected.
- Consult the dealer or an experienced radio/TV technician for help.

FCC Caution: Any changes or modifications not expressly approved by the party responsible for compliance could void the user's authority to operate this equipment.
This device complies with Part 15 of the FCC Rules. Operation is subject to the following two conditions:
(1) This device may not cause harmful interference, and (2) this device must accept any interference received, including interference that may cause undesired operation.