

## System Check\_Body\_2450MHz\_130328

### DUT: D2450V2-SN:736

Communication System: CW; Frequency: 2450 MHz; Duty Cycle: 1:1

Medium: MSL\_2450\_130328 Medium parameters used:  $f = 2450$  MHz;  $\sigma = 1.904$  mho/m;  $\epsilon_r = 51.836$ ;  $\rho$

$= 1000$  kg/m<sup>3</sup>

Ambient Temperature : 22.4 °C ; Liquid Temperature : 21.4 °C

#### DASY5 Configuration:

- Probe: ES3DV3 - SN3270; ConvF(4.17, 4.17, 4.17); Calibrated: 2012/9/28;
- Sensor-Surface: 3mm (Mechanical Surface Detection)
- Electronics: DAE4 Sn778; Calibrated: 2012/8/27
- Phantom: ELI 4.0\_Front; Type: QDOVA001BB; Serial: 1026
- Measurement SW: DASY52, Version 52.8 (2); SEMCAD X Version 14.6.6 (6477)

**Configuration/Pin=250mW/Area Scan (61x61x1):** Measurement grid: dx=12mm, dy=12mm  
 Maximum value of SAR (interpolated) = 18.5 mW/g

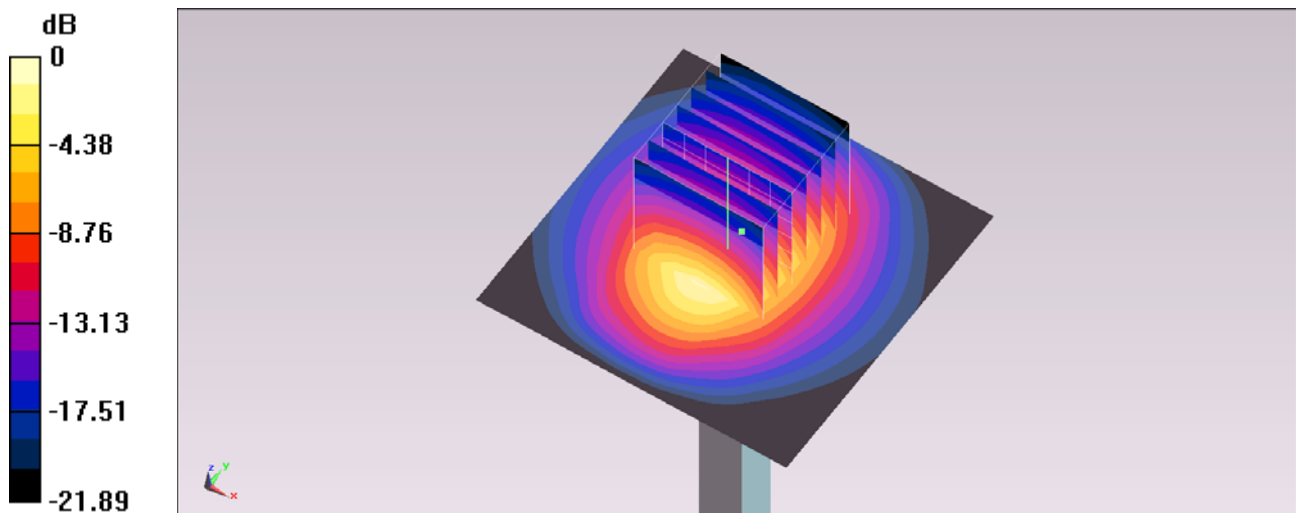
**Configuration/Pin=250mW/Zoom Scan (7x7x7)/Cube 0:** Measurement grid: dx=5mm, dy=5mm, dz=5mm

Reference Value = 93.954 V/m; Power Drift = 0.04 dB

Peak SAR (extrapolated) = 27.629 mW/g

**SAR(1 g) = 13.1 mW/g; SAR(10 g) = 6.15 mW/g**

Maximum value of SAR (measured) = 17.2 mW/g



0 dB = 17.2 mW/g = 24.71 dB mW/g