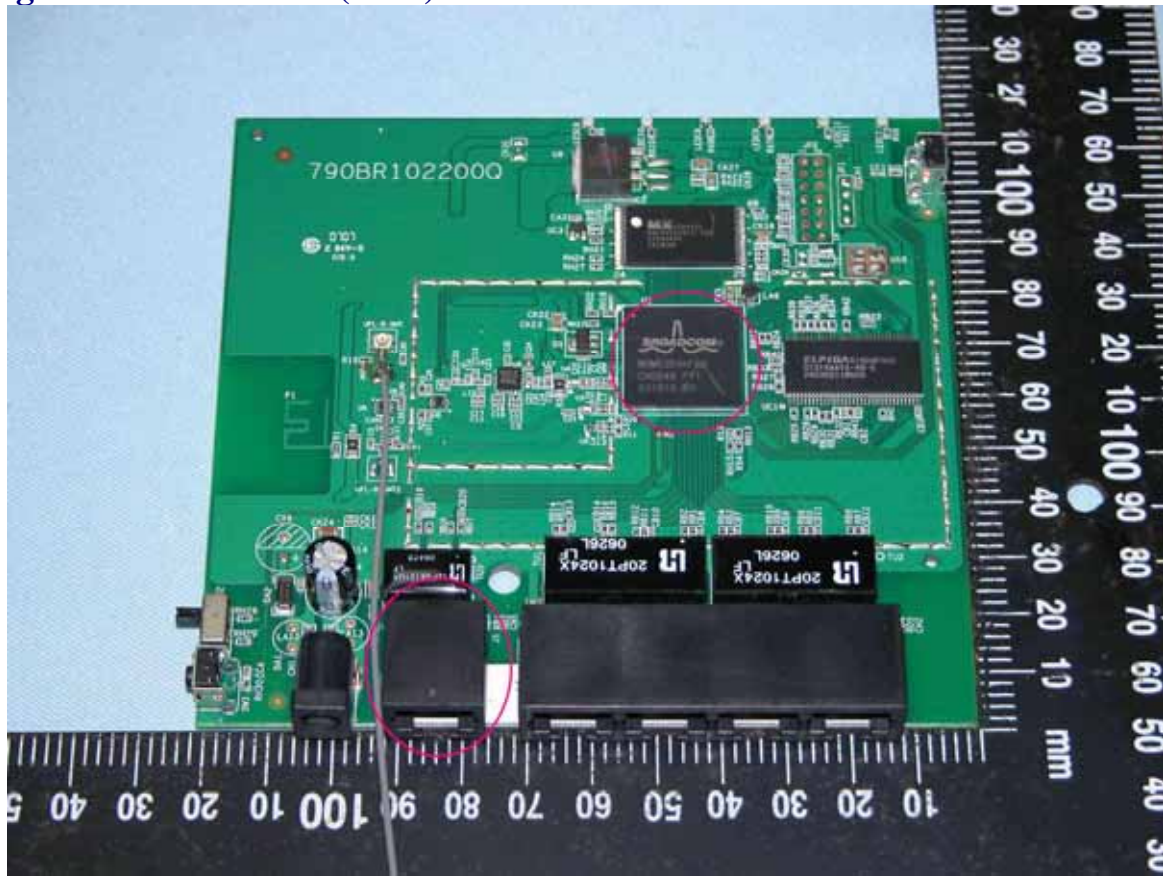


Class II change apply for WHR-HP-G125

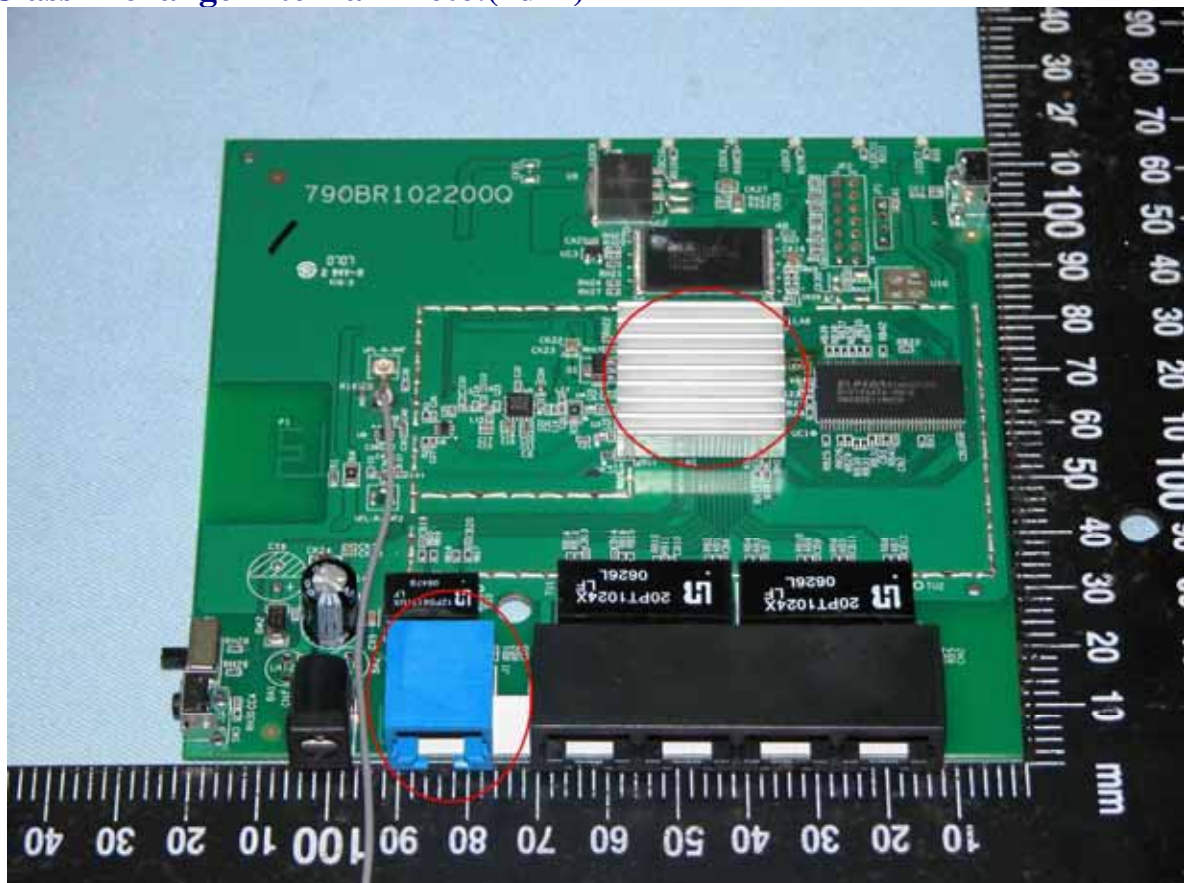
(From WHR-HP-G125 ,FCC ID: [FDI-09101584-0](#))

(1)Change Internal Photo. The difference is add heat sink and change RJ-45(location : J1) Ethernet single-port's color from "Black" to "Blue":

Original Internal Photo(2dBi)



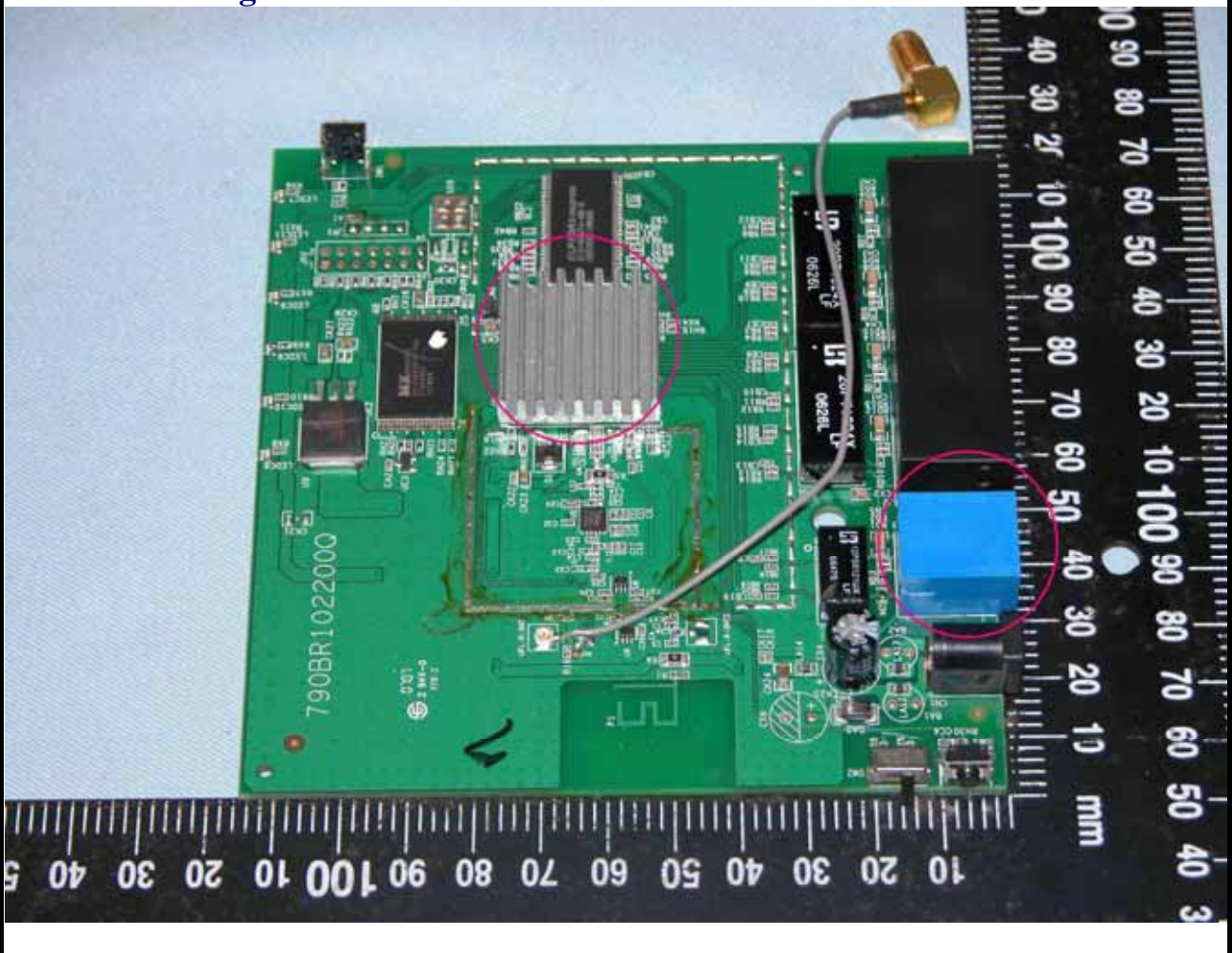
Class II change Internal Photo.(2dBi)



Original Internal Photo(4dB)



Class II change Antenna.



(2)Change Adapter.

Original Adapter(UIA312-3320)



Class II change Adapter(US112-3312)

