

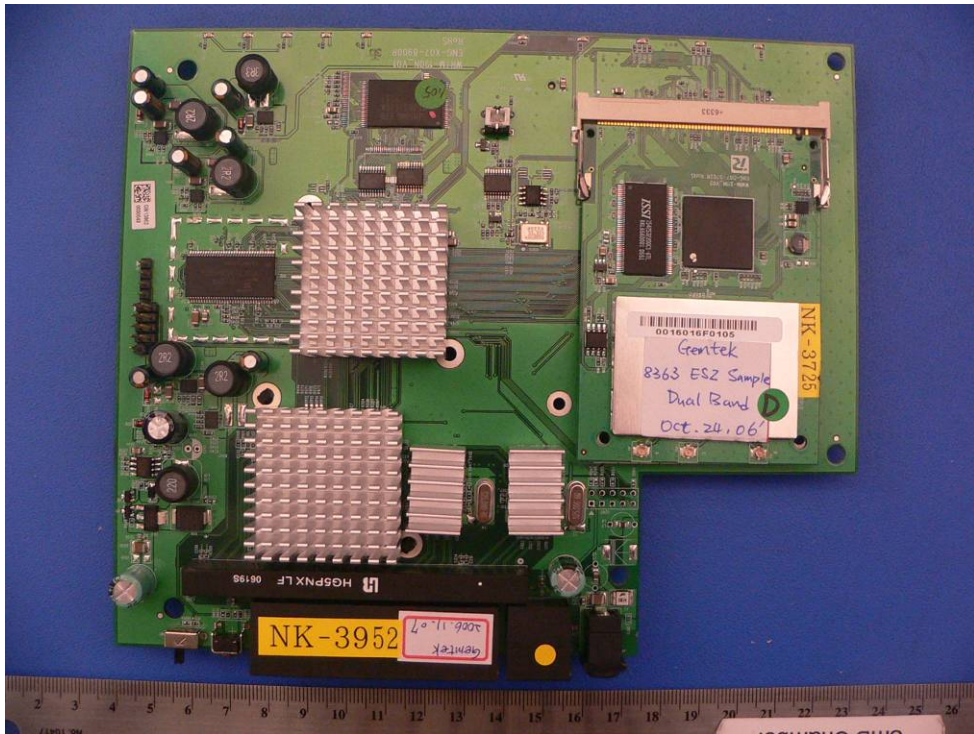
EUT – Port view



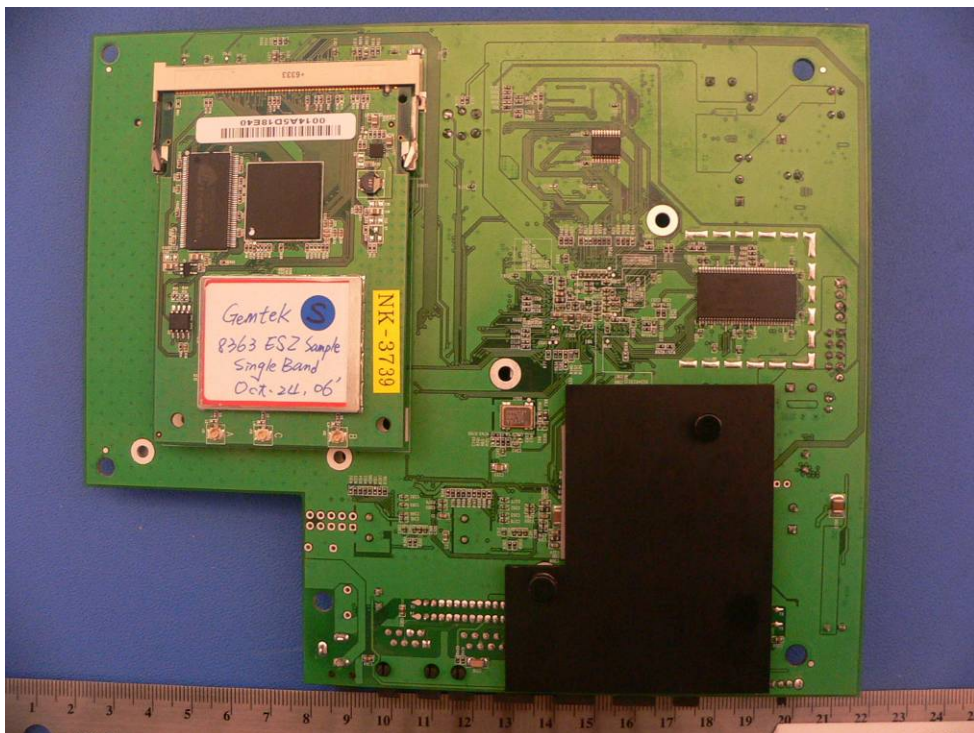
EUT – Chassis View Top Cover Removed



EUT – Main Board Assembly (Component Side View)



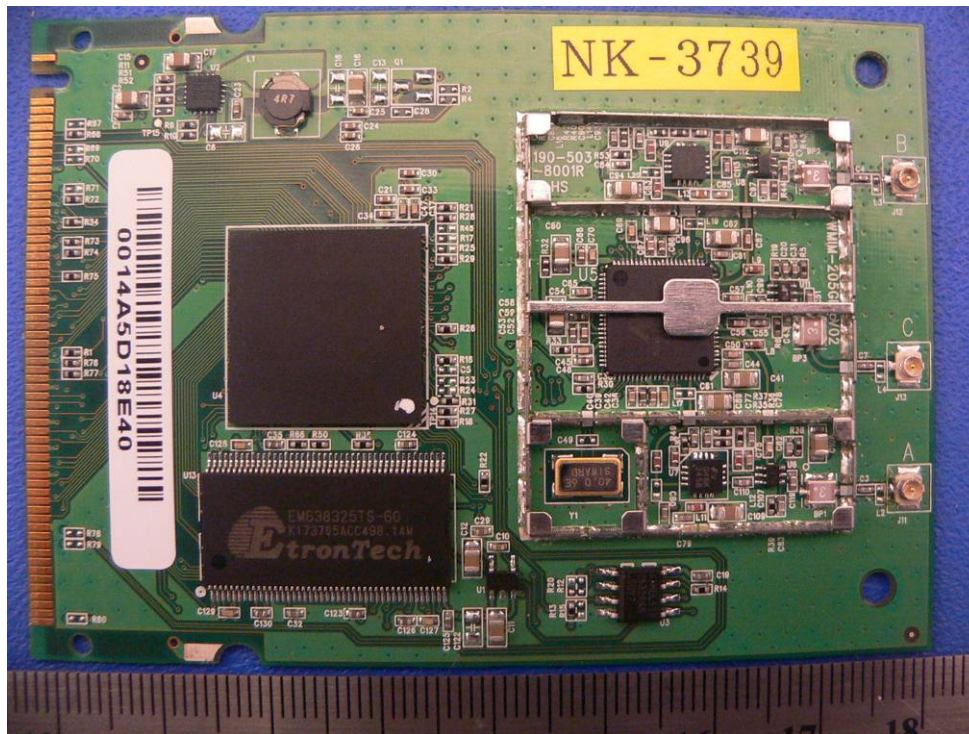
EUT – Main Board Assembly with RF board (Solder Side View)



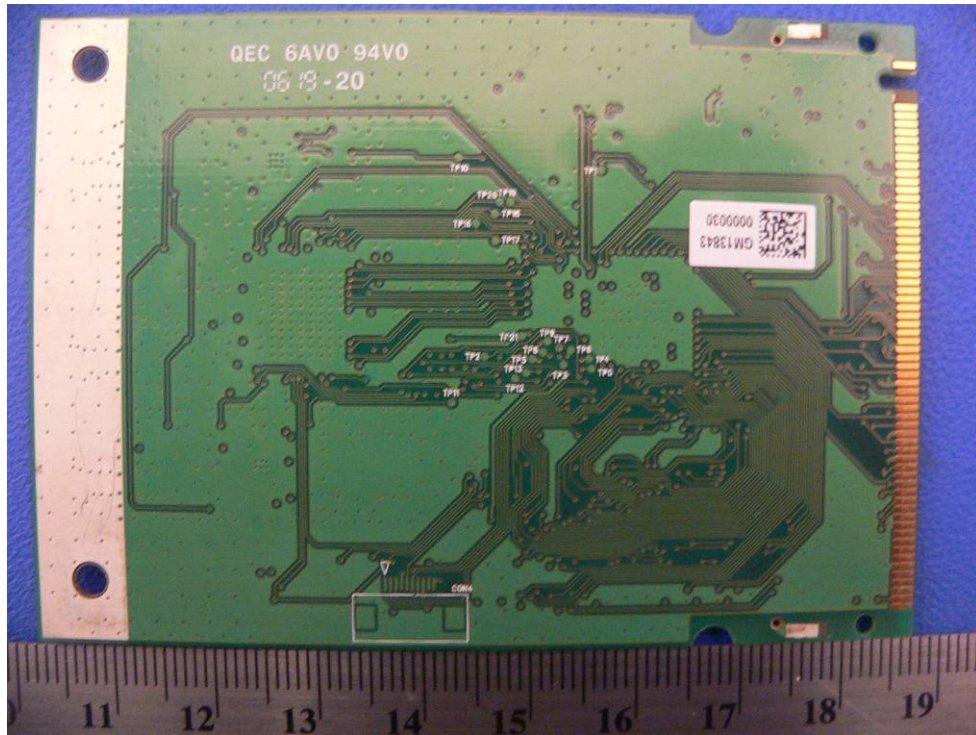
EUT – RF Board Single Band with RF Shielding (Component Side View)



EUT – RF Board Single Band without RF Shielding (Component Side View)



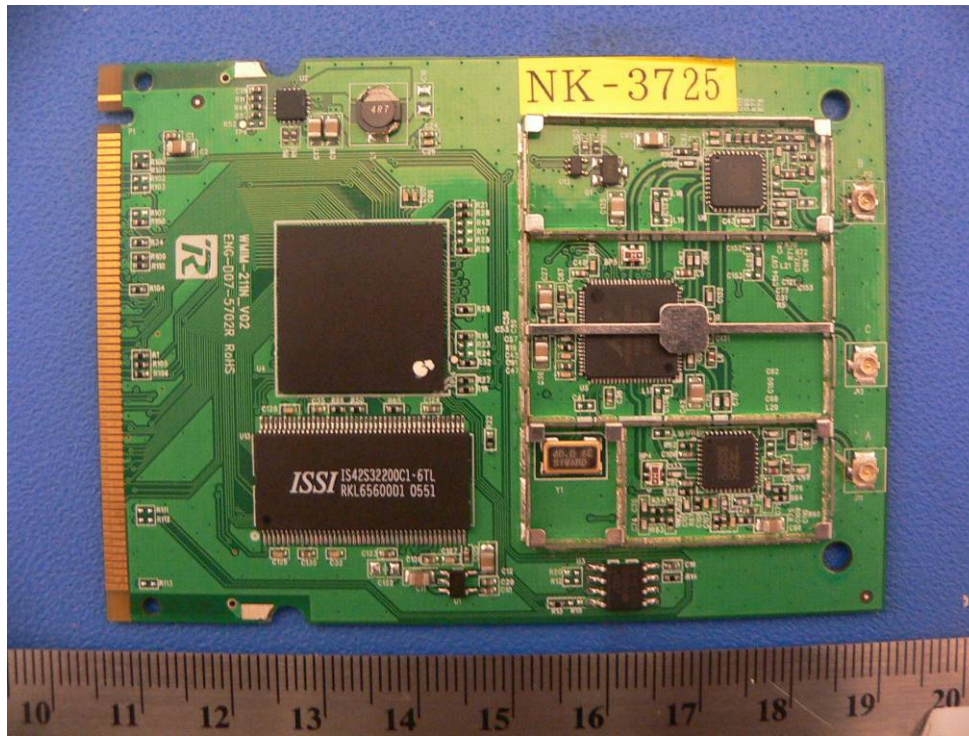
EUT – RF Board Single Band Solder View (Solder Side View)



EUT – RF Board Dual Band with RF Shielding (Component Side View)



EUT – RF Board Dual Band without RF Shielding (Component Side View)



EUT – RF Board Dual Band (Solder Side View)

