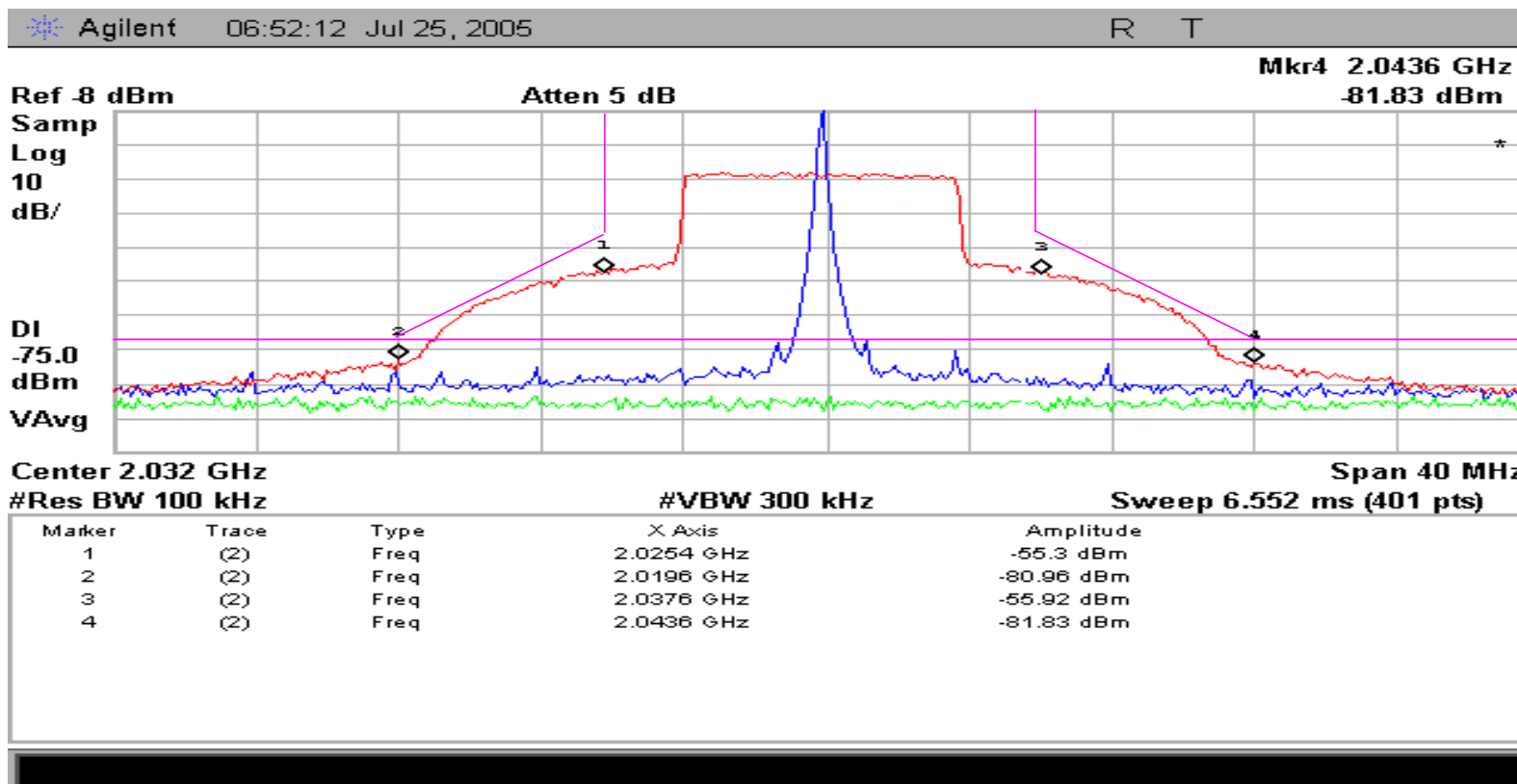


Marker attenuation readings are measured from 0dbm and do not reflect the -8 dbm 0 reference. The true marker value determined by subtracting the reference level from the measurement I.E marker (1) -55dbm - -8 dbm = - 47dbm compliance is shown by adding the compliance factor for measurements made with a 100KHz resolution bandwidth which is  $10 \log (B_{REF} / B_{RES}) = 10 \log (0.0046E6 / 100E3) = 13.9\text{dbm}$

Marker (1) 50% removed from center frequency is 69dbm down from carrier mean power attenuation greater than 50db is not required

Marker ( 2 ) 100% removed - 80.9 dbm - -8dbm = 72 .9dbm +13.9 dbm = 86.8 dbm 5 Watt measurement



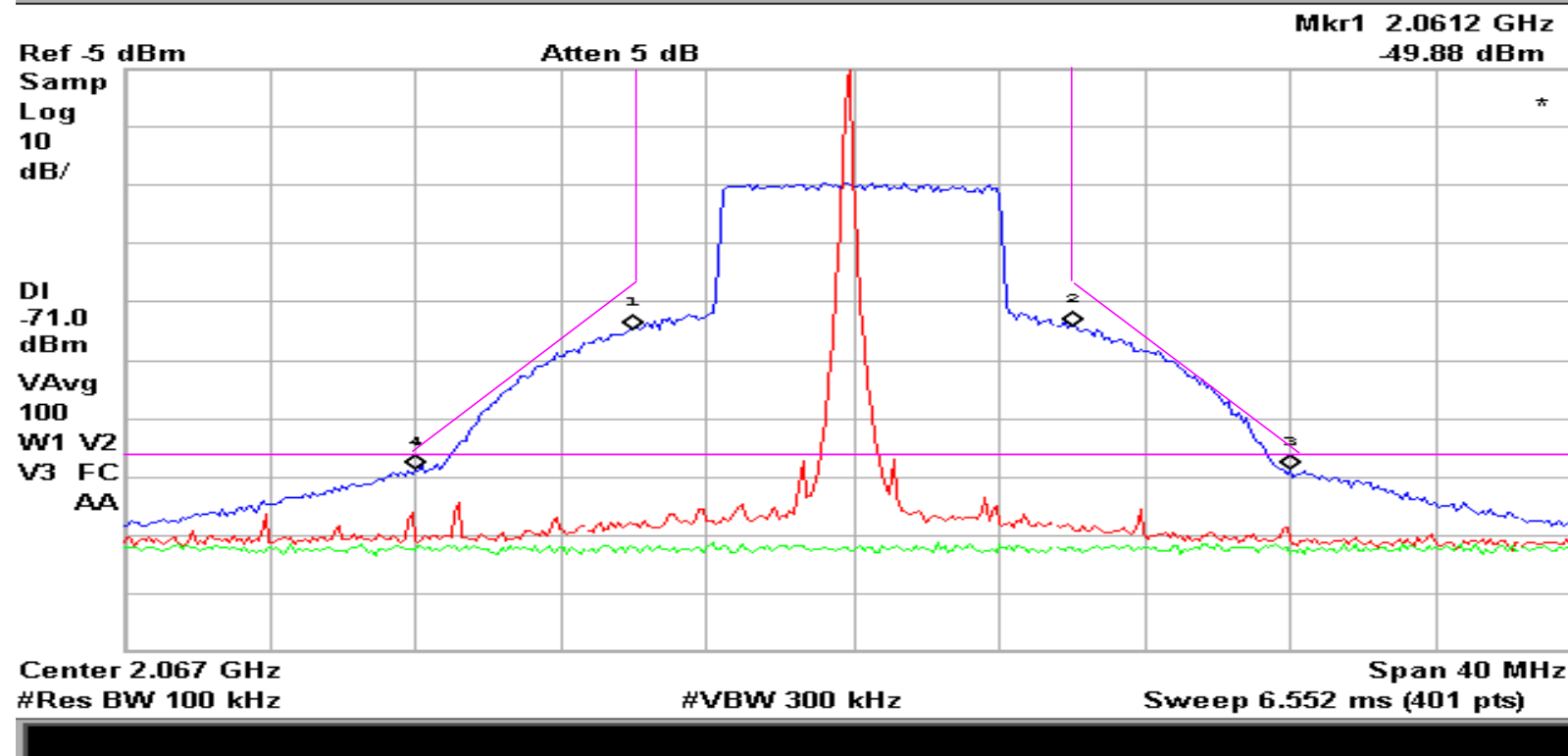
channel 4 @ 2.067GHz QPSK 1/2 FEC COFDM bandwidth 8MHz 36.7 dbm 4.7watts

marker ( 1 ) and ( 2 ) 50% removed -50 dbm - -5dbm = - 45dbm +13.9dbm compliance factor 58.9db down from mean power of carrier

marker ( 3 ) and ( 4 ) 100% removed -74 dbm - -5dbm = - 69dbm +13.9dbm compliance factor 82.9db down from mean power of carrier

Agilent 08:22:41 Jul 26, 2005

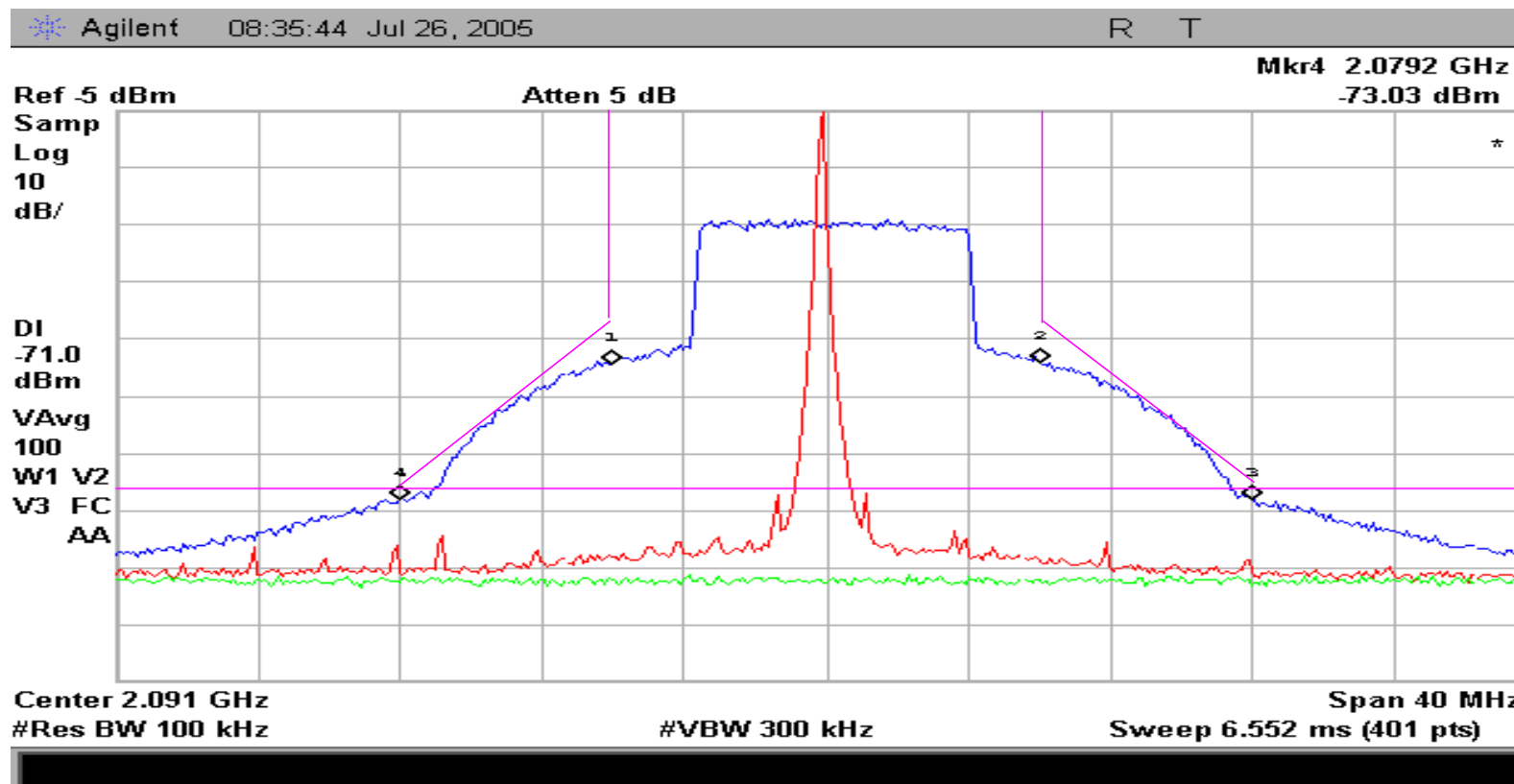
R T



CHANNEL ( 6 ) 2.091GHz 4.9WATTS @36.8dbm

marker ( 1 ) and ( 2 ) 50% removed -50 dbm - -5dbm = - 45dbm +13.9dbm compliance factor 58.9db down from mean power of carrier

marker ( 3 ) and ( 4 ) 100% removed -73 dbm - -5dbm = - 68dbm +13.9dbm compliance factor 81.9db down from mean power of carrier



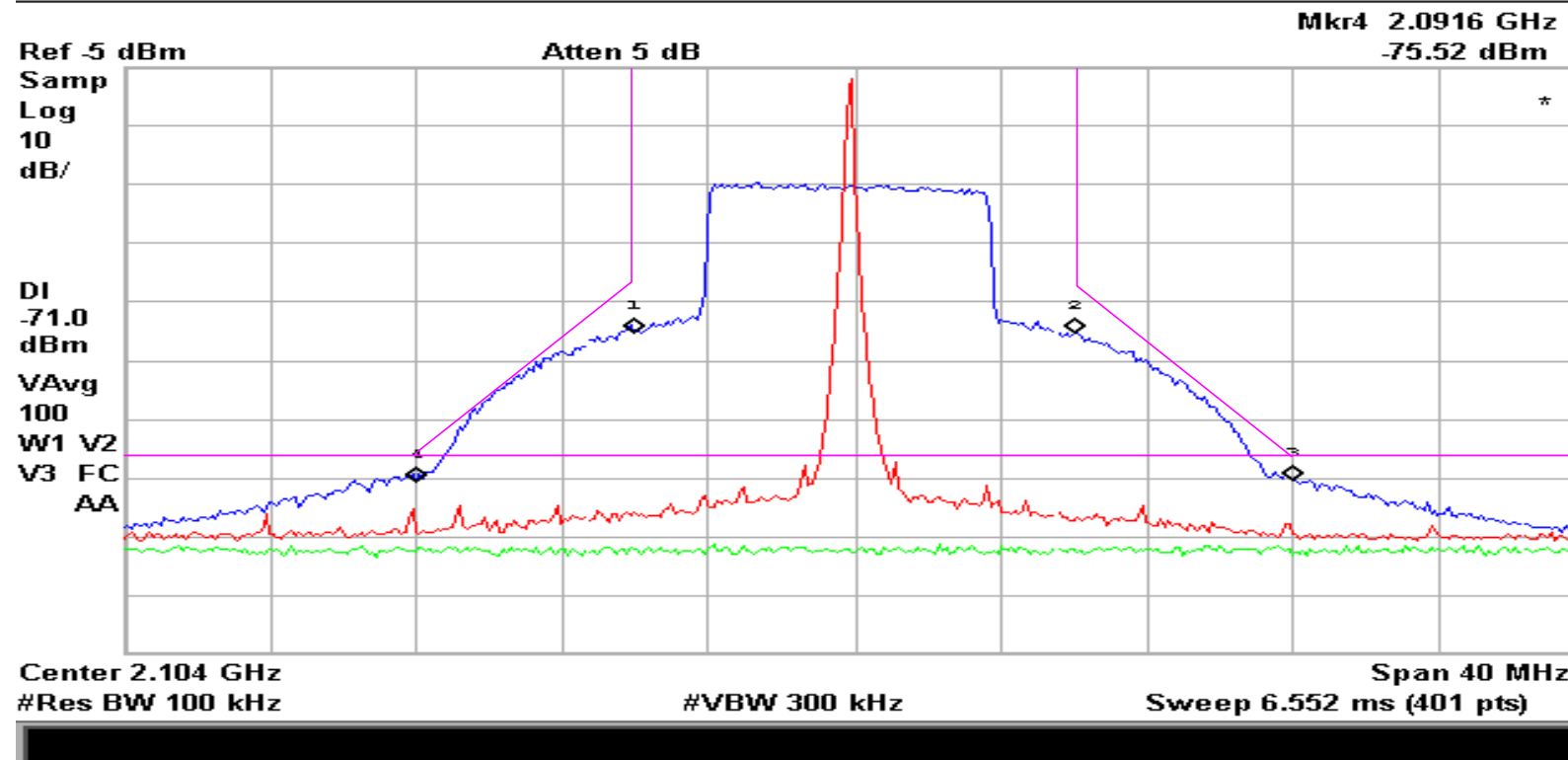
CHANNEL ( 7 ) 2.103GHz 4.9WATTS @36.8dbm

marker ( 1 ) and ( 2 ) 50% removed -50 dbm - -5dbm = - 45dbm +13.9dbm compliance factor 58.9db down from mean power of carrier

marker ( 3 ) and ( 4 ) 100% removed -75 dbm - -5dbm = - 70dbm +13.9dbm compliance factor 83.9db down from mean power of carrier

Agilent 08:57:20 Jul 26, 2005

R T



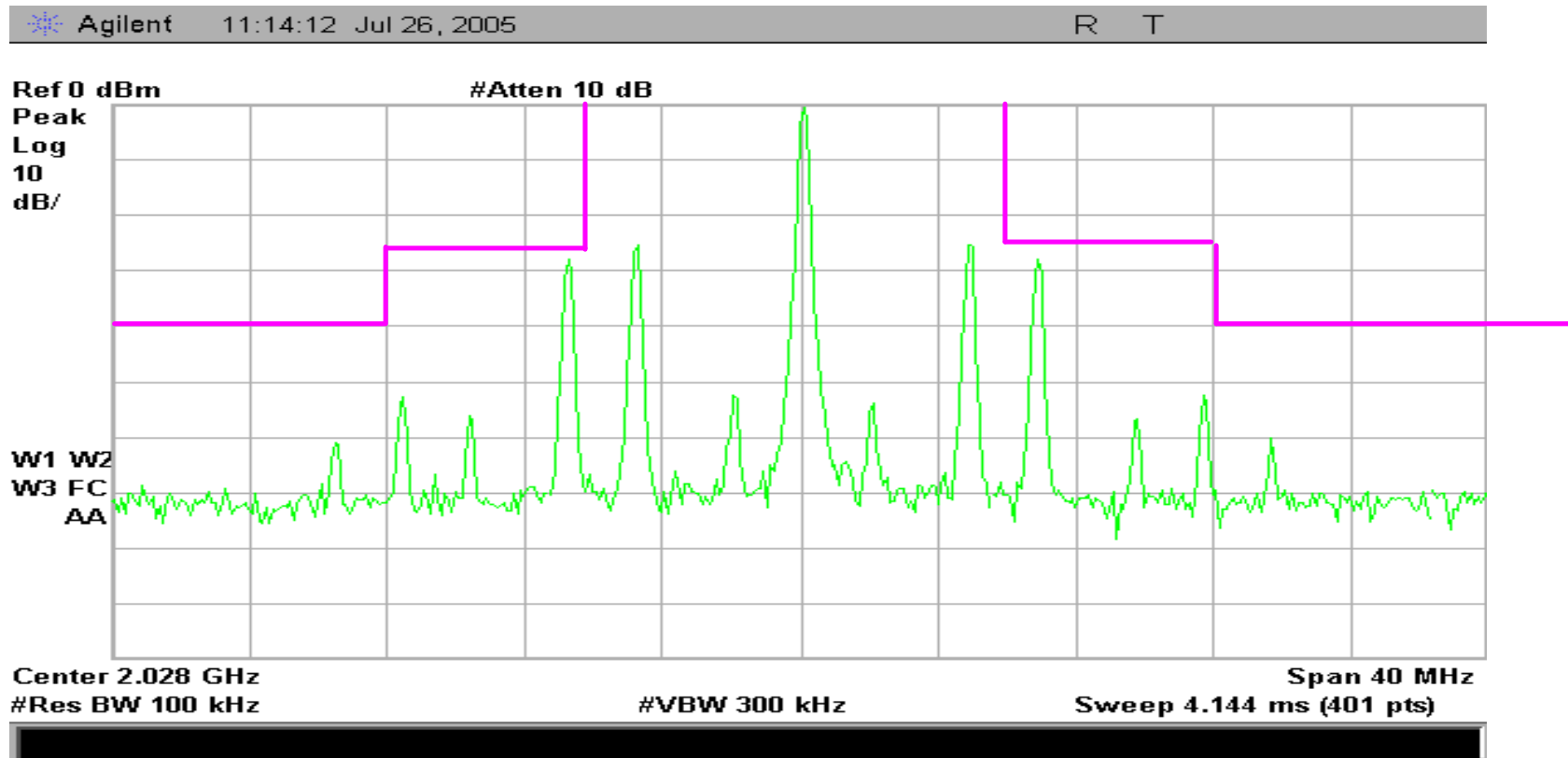
Analog spectral plots  
channel ( 1 )

### Analog spectral plots

#### *Analog Application:*

“When using frequency modulation:

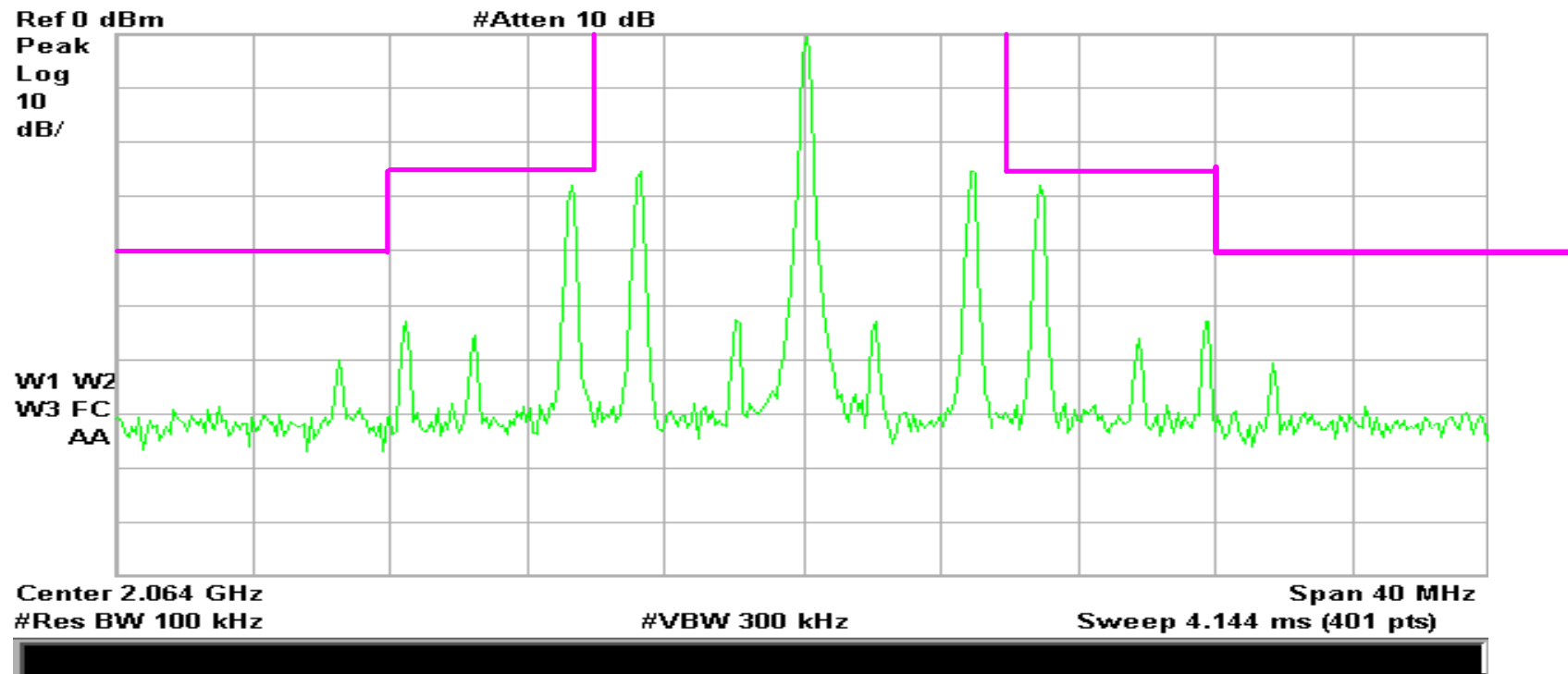
- (i) On any frequency removed from the assigned (center) frequency by more than 50 % up to and including 100 % of the authorized bandwidth: At least 25 db in any 100 KHz reference bandwidth (Bref):
- (ii) On any frequency removed from the assigned (center) frequency by more than 100% up to and including 250% of the authorized bandwidth: At least 35 db in any 100 KHz reference bandwidth.



Analog spectral plots  
channel ( 4 )

Agilent 10:42:57 Jul 26, 2005

R T



Analog spectral plots  
channel ( 6 )

Agilent 10:44:38 Jul 26, 2005

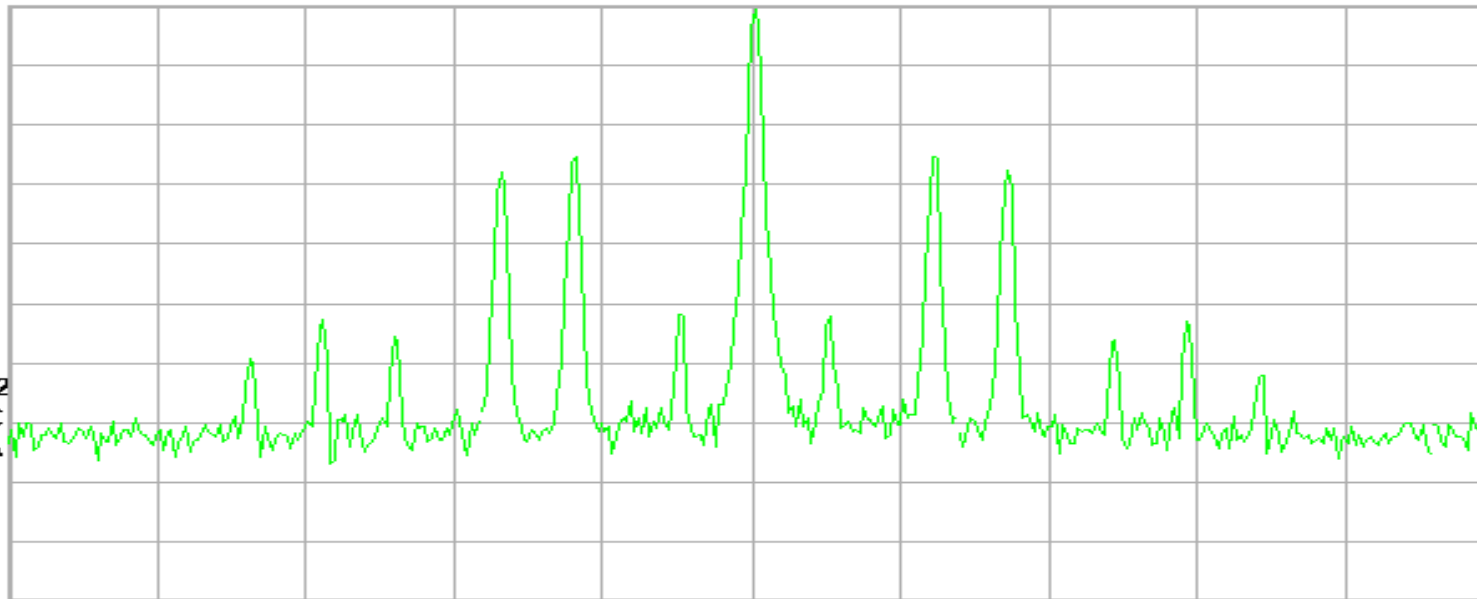
R T

Ref 0 dBm

#Atten 10 dB

Peak  
Log  
10  
dB/

W1 W2  
W3 FC  
AA



Center 2.088 GHz

Span 40 MHz

#Res BW 100 kHz

#VBW 300 kHz

Sweep 4.144 ms (401 pts)

Analog spectral plots  
channel ( 7 )

Agilent 10:46:22 Jul 26, 2005

R T

