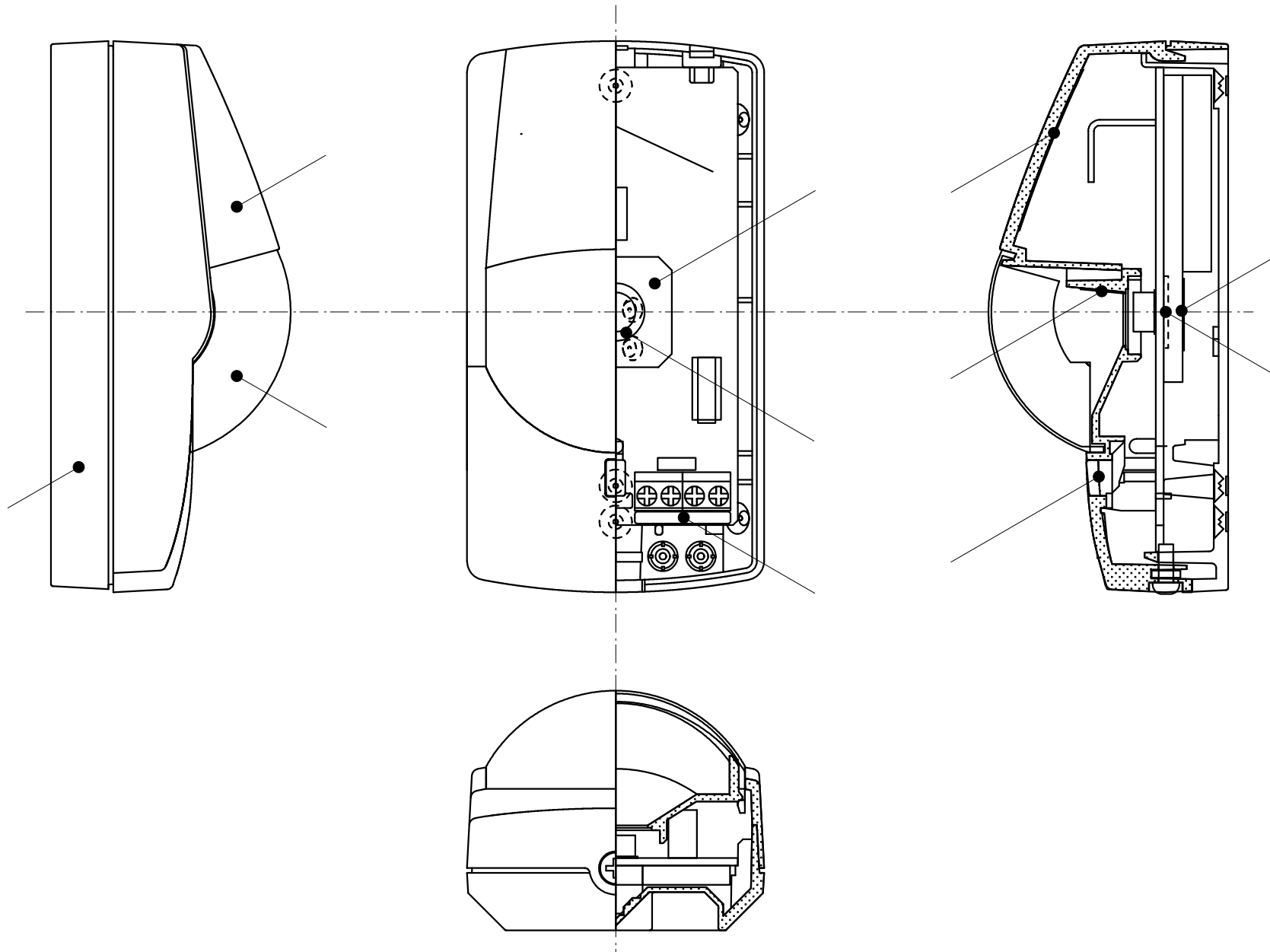


## Label Position of MX-40 (FCC ID: FA7MA-SERIES)

Label will be affixed at No.6 described in the following page.

# CONSTRUCTION DIAGRAM

## MX-40



## PARTS LIST : MX-40

PARTS NO.	PARTS NAME	QTY.	MATERIAL			UL FLAME CLASS	UL (FILING NO.)
			TYPE	GENERIC NAME	MANUFACTURER		
1	BASE	1	TERURAN GP35 TOYORACK 700	ABS	BASF CORPORATION TORAY CORPORATION	94HB	
2	COVER	1		ABS		94HB	
3	LENS	1	HJ 580 SHOLEX F 6080V HIZEX 1300J	POLYETHYLENE	mitsubishi chemical corporation POLYMER PRODUCTS CO SHOWA DENKO KK MITSUI PETROCHEMICAL INDUSTRIES LTD		
4	SPONGE PAD 1	1		POLYETHYLENE SPONGE			
5	RUBBER CAP	1		CHLOROPRENE RUBBER			
6	RATING LABEL	1	PGDQ2,PGGU2 OR PGJI2				
7	MIRROR	1		ALUMINUM			
8	LED LENS	1		PMMA	CHI MEI CORPORATION ASAHI CHEMICAL INDUSTRY CO.,LTD		
9	SPONGE PAD 2	1		NEOPRENE SPONGE			
10	LOT NO. LABEL	1		ART PAPER			
11	TERMINAL LABEL	1		YUPO			