

## **Table of Contents**

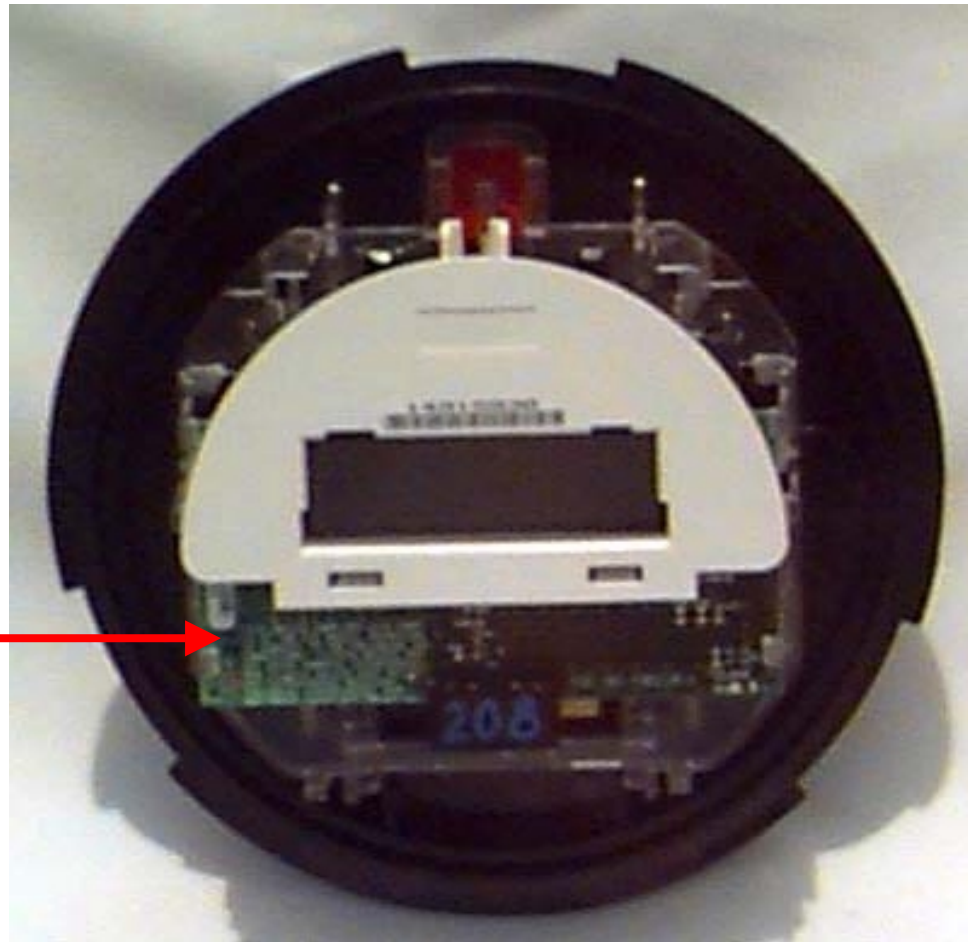
### **Exhibit Eight**

<b>EXHIBIT 8 : INTERNAL PHOTOGRAPHS</b>	<b>42</b>
<hr/>	
(A) CENTRON RMR METER - GLASS AND PLASTIC COVER REMOVED	42
(B) CLOSE-UP VIEW OF RMR BOARD AND LCD DISPLAY	43
(C) RMR BOARD - FRONT VIEW - FCC COMPLIANCE STATEMENT / FCC ID NUMBER	44
(D) RMR BOARD - BACK VIEW	45
(E) METROLOGY BOARD - FRONT VIEW	46
(F) METROLOGY BOARD - BACK VIEW	47
(G) METER BASE - FRONT SIDE	48

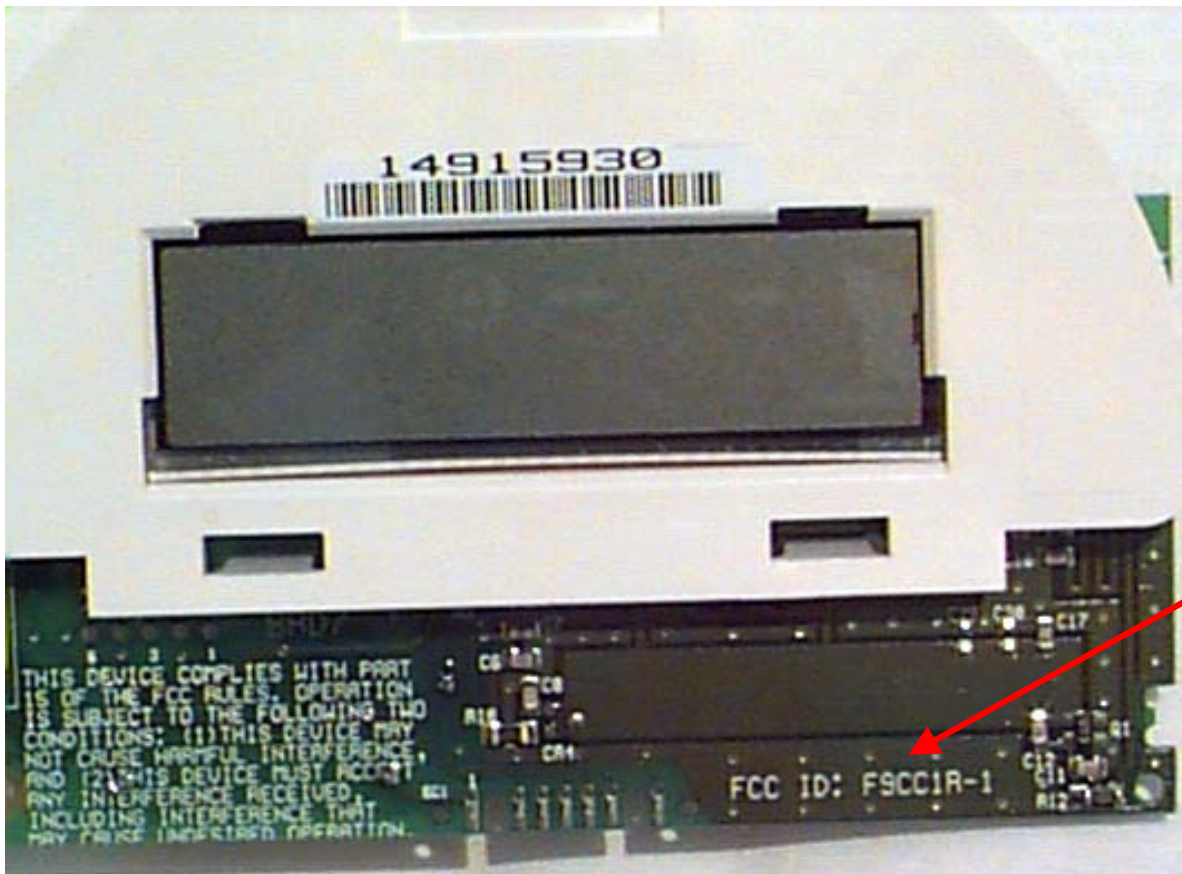
**Exhibit 8 : Internal Photographs**

**Notice FCC Statement.**

**Close-up View of this statement on  
next photo.**

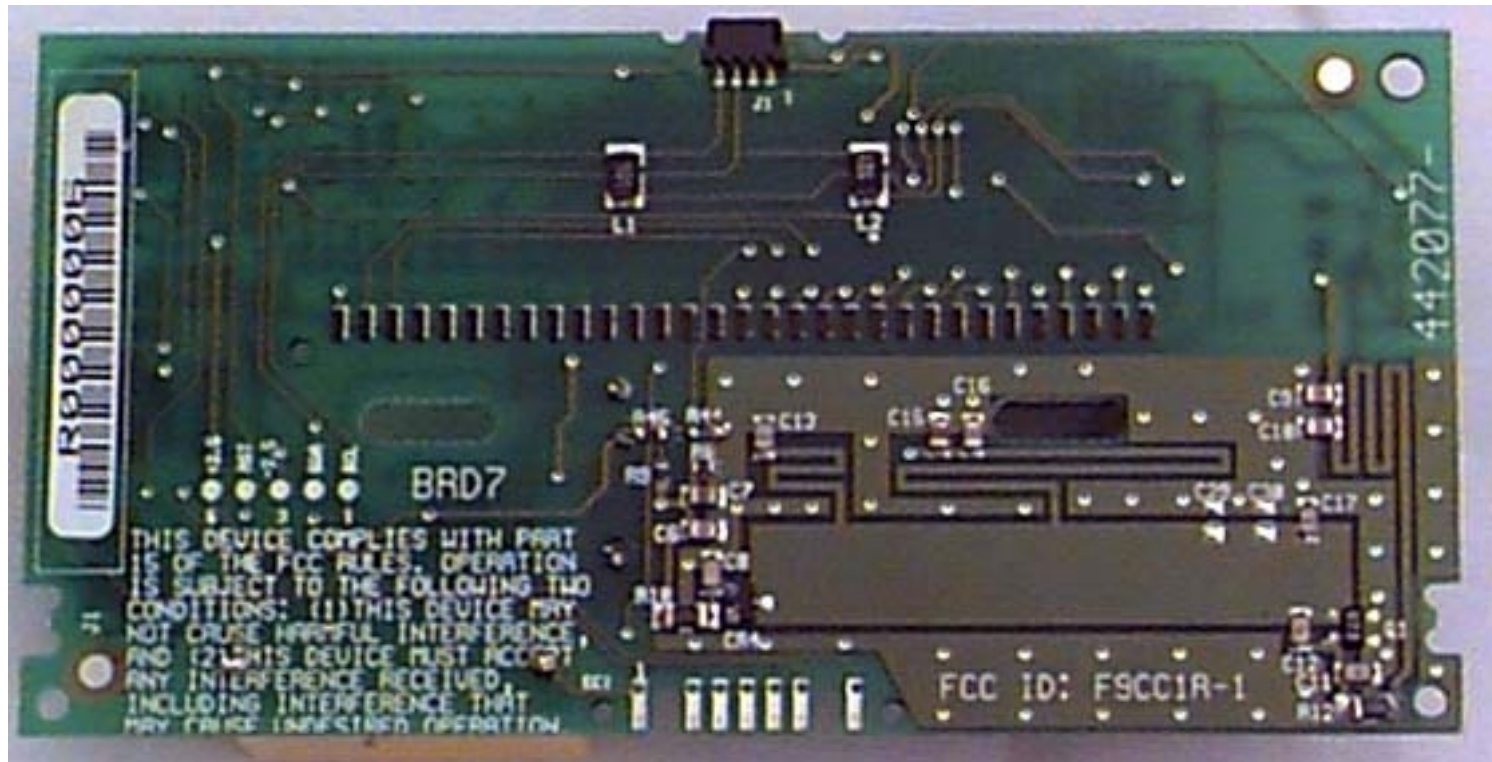


**(a) Centron RMR Meter - Glass and Plastic Cover Removed**



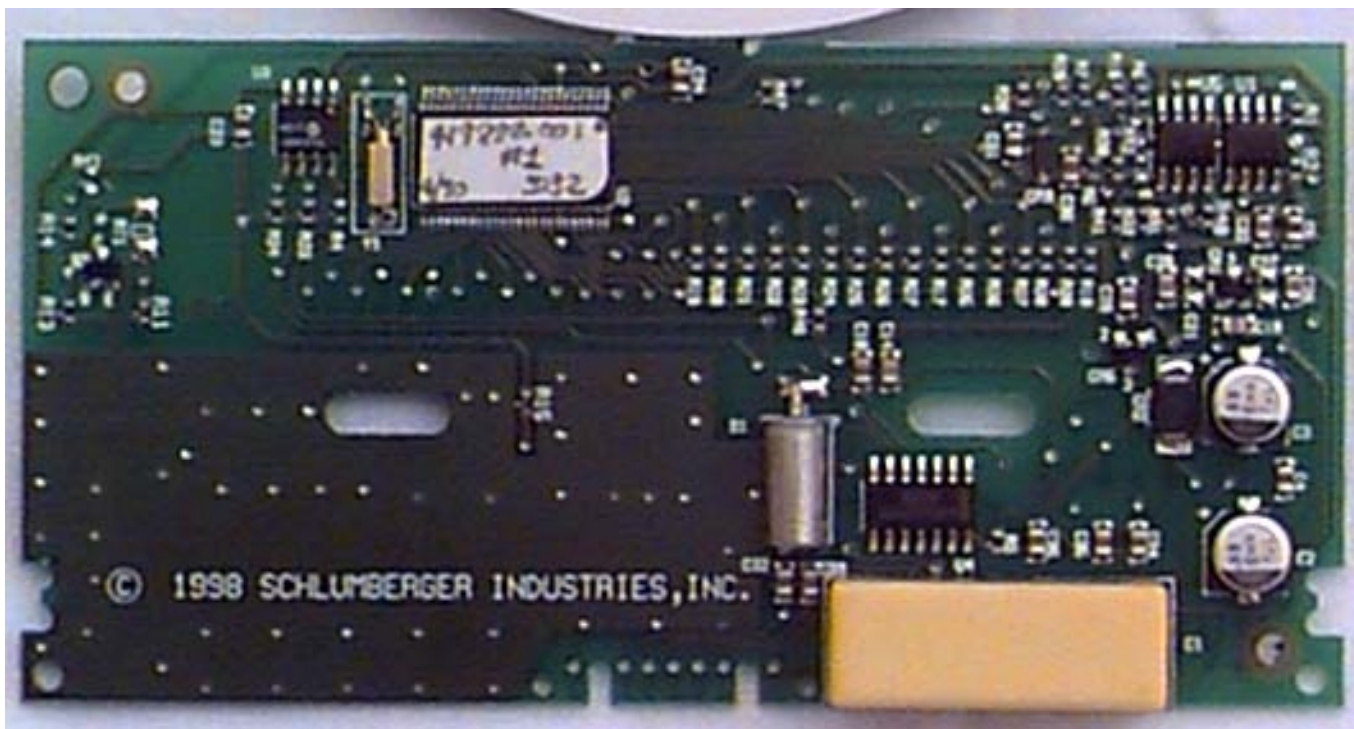
Notice FCC ID  
Number

(b) Close-up View of RMR Board and LCD Display

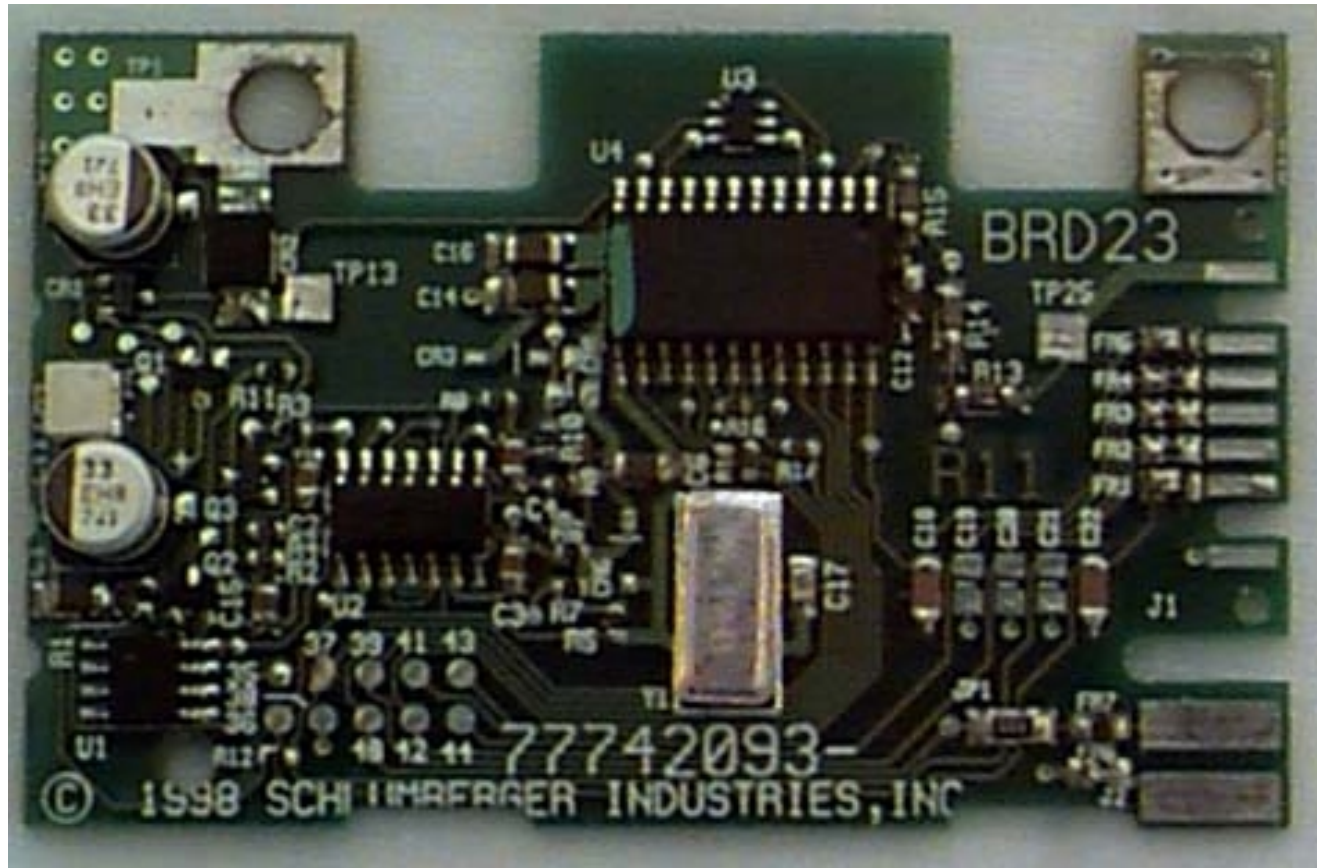


**(c) RMR Board - Front View - FCC Compliance Statement / FCC ID NUMBER**

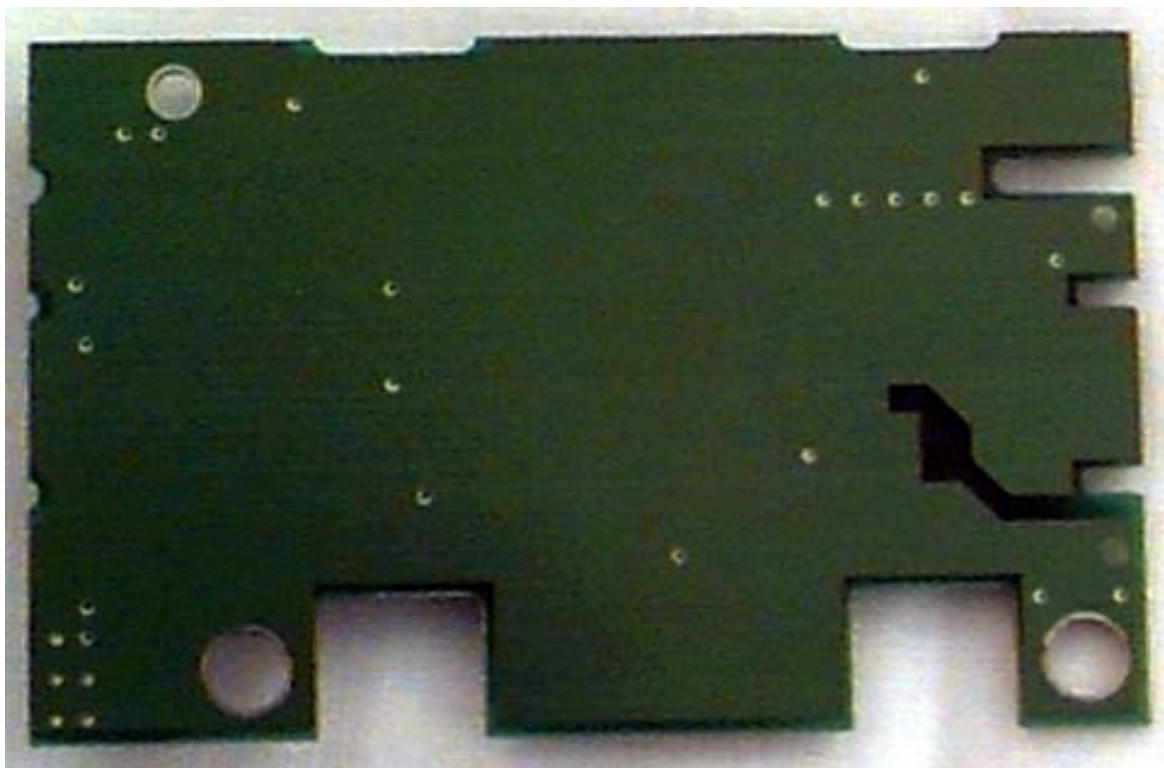




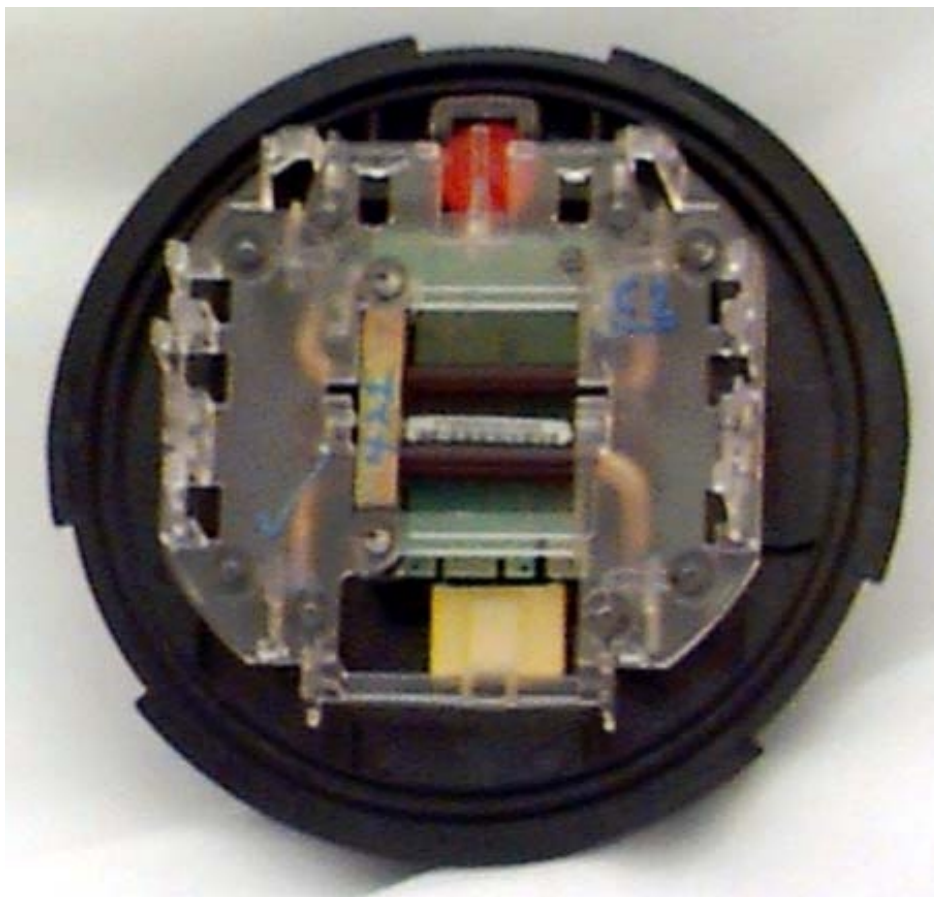
(d) RMR Board - Back View



(e) Metrology Board - Front View



(f) Metrology Board - Back View



(g) Meter Base - Front Side